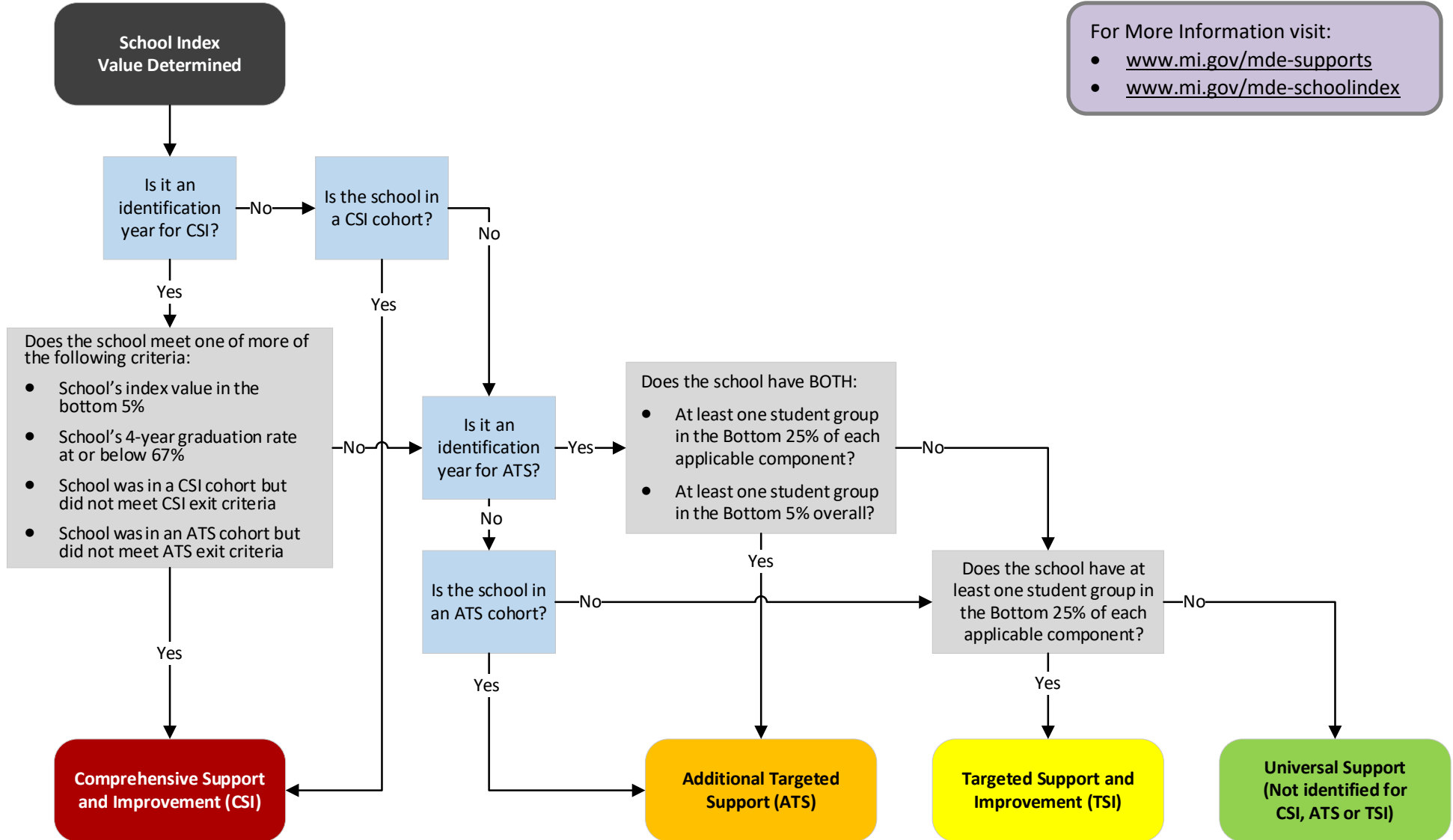




# School Support Identification Flow Chart

How schools are identified for federal school supports using the Michigan School Index.

For More Information visit:  
• [www.mi.gov/mde-supports](http://www.mi.gov/mde-supports)  
• [www.mi.gov/mde-schoolindex](http://www.mi.gov/mde-schoolindex)



\*The support categories of CSI and ATS are multi-year cohorts of support. Schools remain in those support categories and will continue to be reported as CSI and ATS in accountability reports, beyond the initial year of identification, until they meet the exit criteria for that support category. For more information on frequency of identifications, exit timelines, and exit criteria, please see the CSI and ATS overview documents available at either [www.mi.gov/mde-schoolindex](http://www.mi.gov/mde-schoolindex) or [www.mi.gov/mde-supports](http://www.mi.gov/mde-supports).

## Identification Process Summary

In a CSI identification year, which is every three years, the threshold for the bottom 5% of schools is determined and schools are identified for CSI when they (1) have an overall school index value at or below the bottom 5% schools threshold, OR (2) meet the low graduation rate pathway, OR (3) are schools previously in a CSI cohort but did not meet CSI exit criteria OR (4) are schools previously in an ATS cohort but did not meet ATS exit criteria.

In an ATS identification year, which is every six years, schools having one or more subgroups performing at or below the bottom 25% component thresholds for each applicable component **AND** one or more subgroups performing at or below the bottom 5% schools threshold are identified as ATS schools, unless the school has already been identified for, or is in, a CSI cohort.

In a TSI identification year, which is every year, the threshold for the bottom 25% is set within each component and schools having one or more subgroups at or below these thresholds in each applicable component are identified for TSI, unless the school has already been identified for, or is in, a CSI or ATS cohort.

## Identification Thresholds

This section provides the bottom 5% overall threshold and bottom 25% individual component thresholds used in identifying schools for each support category.

- Identifications are determined from threshold values calculated from the corresponding School Index accountability report year.
- Threshold values for School Index accountability report years where no CSI or ATS identifications are determined (e.g. 2023-24 school year index results) are provided for reference purposes only.

Threshold Type	Applicable Designations	Component	Threshold 2021-22	Threshold 2023-24
Bottom 5% Building	CSI & ATS	Overall	23.88	<b>32.17</b>
Bottom 25% Components	TSI & ATS	Growth	39.34	<b>62.00</b>
		Proficiency	35.28	<b>35.44</b>
		Graduation Rate	86.71	<b>81.37</b>
		English Learner Progress	26.49	<b>42.35</b>
		School Quality and Student Success	56.03	<b>62.66</b>
		Subject Test Participation	100.00	<b>100.00</b>
		English Learner Test Participation	100.00	<b>100.00</b>

## Additional Information

For more information on federal school support identifications determined using School Index report data, please visit [www.mi.gov/mde-supports](http://www.mi.gov/mde-supports).

For more information on the Michigan School Index, please visit: [www.mi.gov/mde-schoolindex](http://www.mi.gov/mde-schoolindex).

For frequently asked questions (FAQs) including examples utilizing the thresholds to show how they apply to identifications, please see the [School Index System Frequently Asked Questions \(FAQ\)](#).