

Enrollment Report

October 27, 2025



EDEN PRAIRIE SCHOOLS



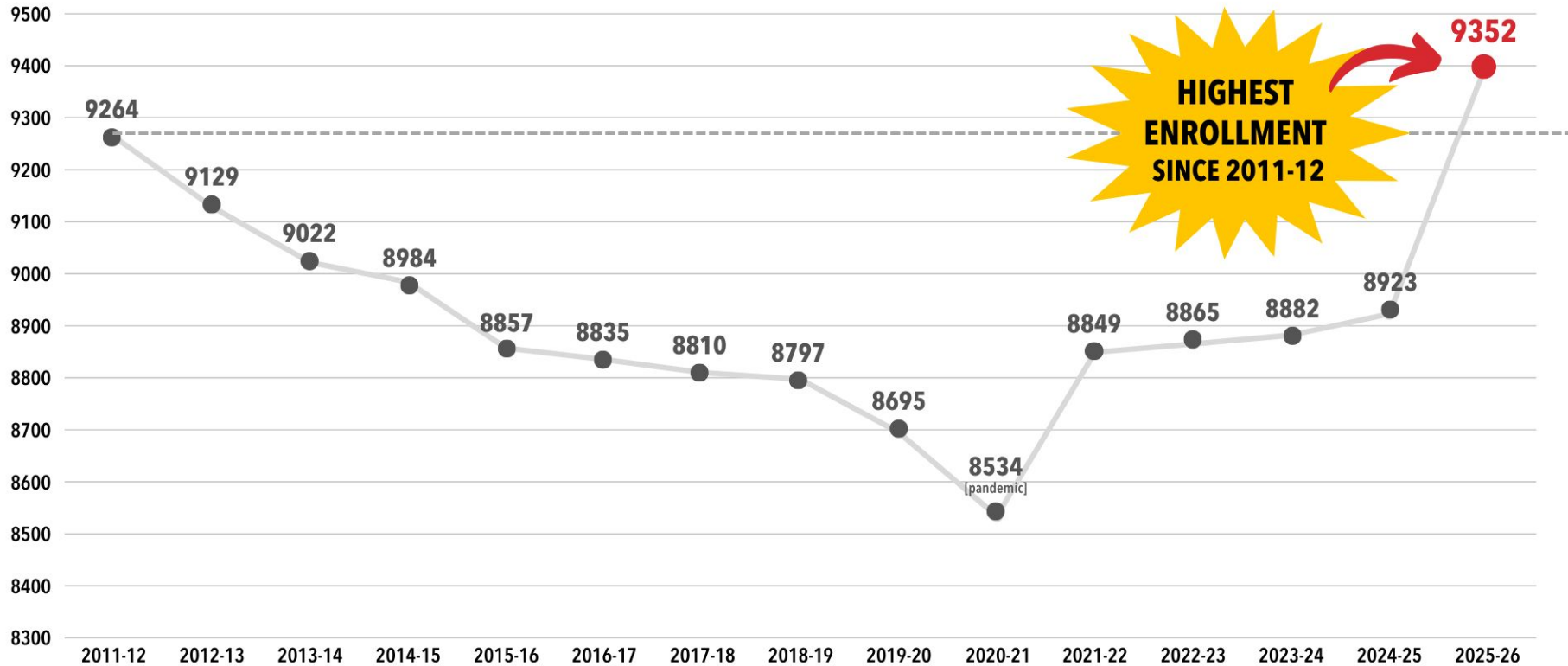
General Enrollment Definitions

1. Enrollment Counts

- Official October 1 Count
 - Establishes funding structure for the year
 - Categorical funding is based on Oct 1, Gen Ed aid on student daily membership for the year
- Changing enrollment throughout the year
 - Enrollment changes everyday — funding is adjusted
- EPO enrollment at 690 FT

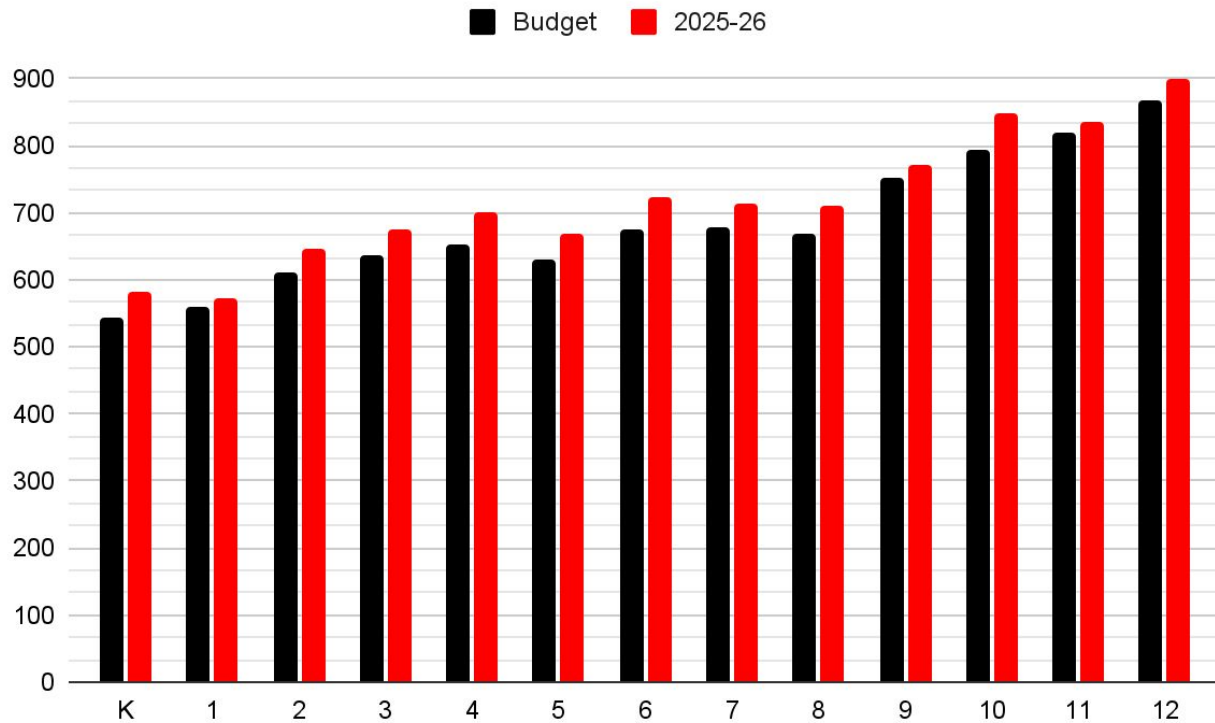
INCREASING ENROLLMENT

Data based on October 1 student seat count





Enrollment by Grade vs Budget



Data based on official October 1 student count

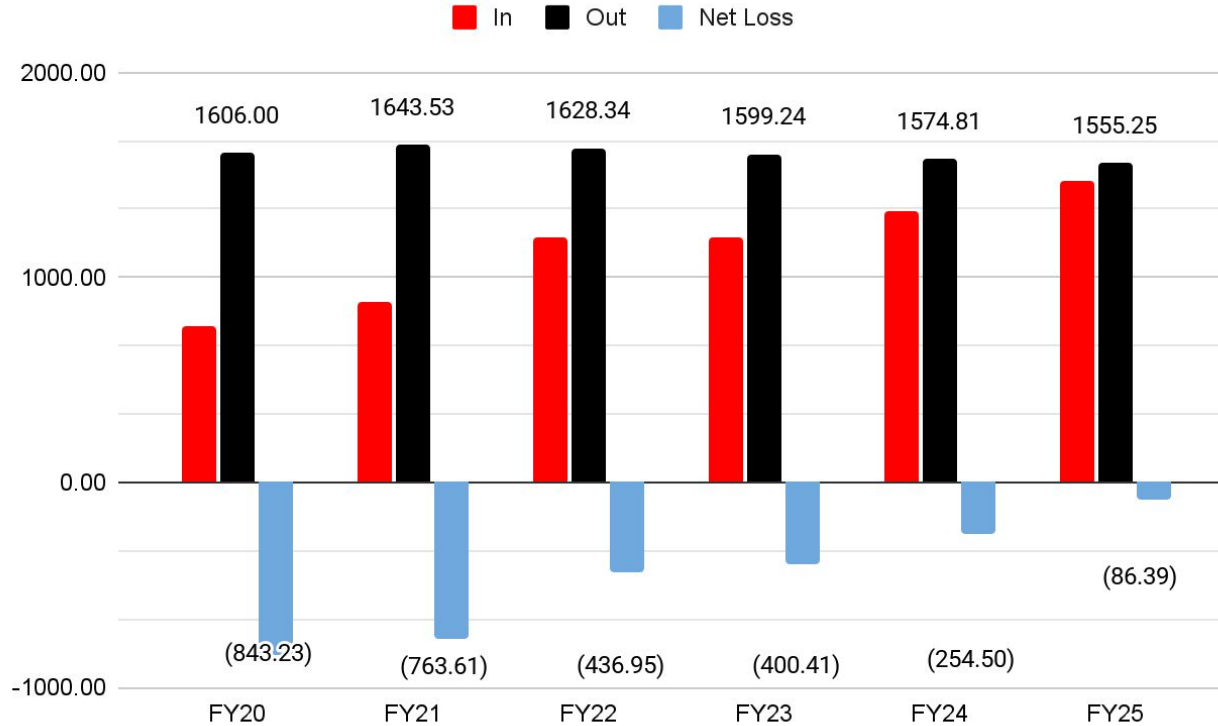


Budget vs Actual Projection

	K	(1)	(2)	(3)	(4)	(5)	(6)	(7)	(8)	(9)	(10)	(11)	(12)	Total	%/+--
B&M K-5 Total	44	11	28	40	44	37								204	5.88
B&M 6-12 Total							39	28	22	14	41	14	35	193	4.02
B&M K-12 Total	44	11	28	40	44	37	39	28	22	14	41	14	35	397	4.80
EPO (Full-Time)	-6	4	6	-2	6	3	11	8	20	4	14	0	-3	65	10.40
K-12 Total	38	15	34	38	50	40	50	36	42	18	55	14	32	462	5.20
% from budget	6.97	2.68	5.56	5.97	7.67	6.35	7.42	5.31	6.27	2.39	6.93	1.71	3.69	5.20	



Open Enrollment History



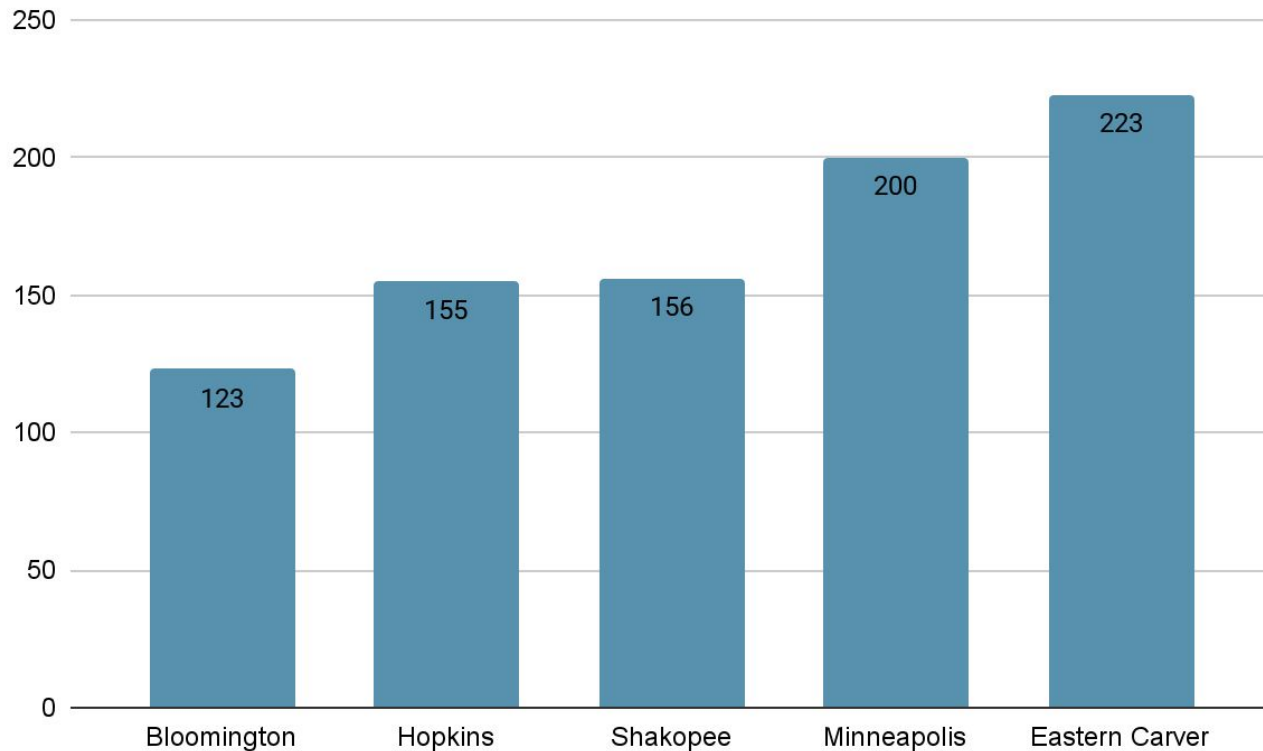


New Open Enrollments (OE)

Incoming vs Outgoing OE	2024-25	2025-26	Variance
Total Incoming OE	327	413	+86
EPO Incoming OE	173	229	+56
Non EPO Incoming OE	154	184	+30
Total Outgoing OE	195	187	-8
Total Outgoing Kindergarten	79	73	-6

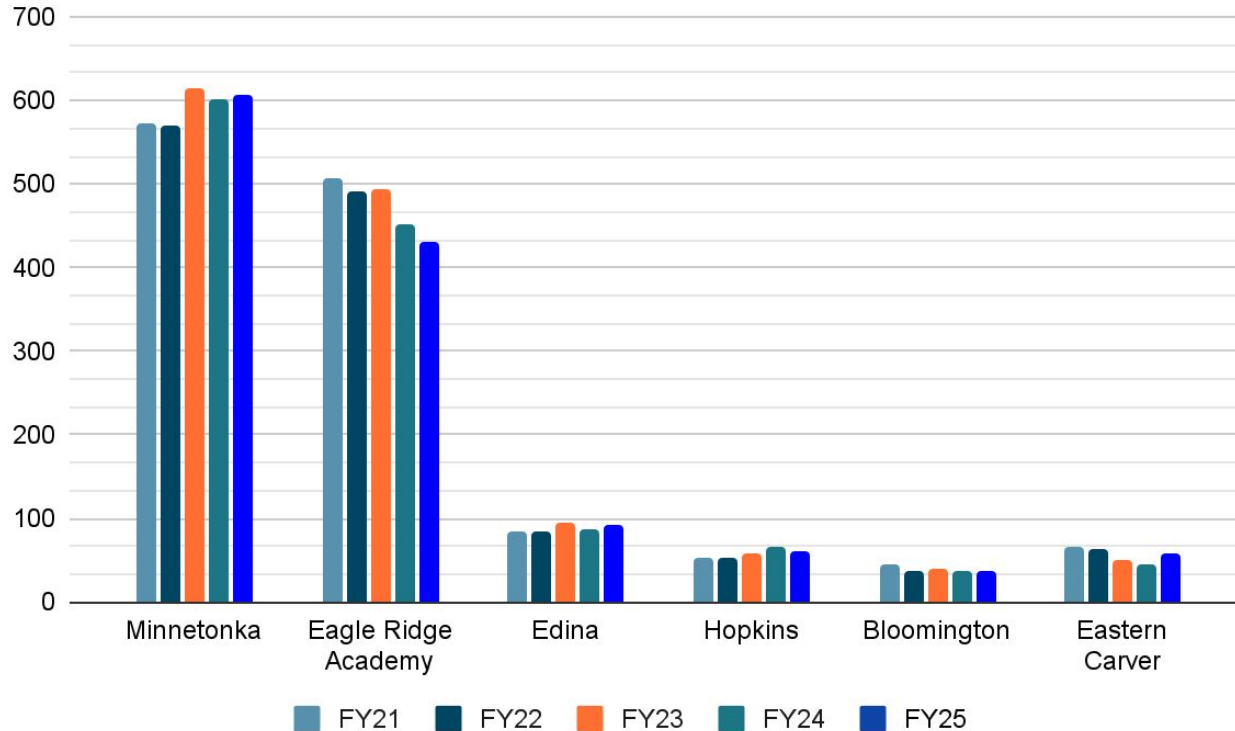



2025 Open Enrollment Into EP





Residents Served Elsewhere





Why Students Leave

Reason for not returning	Students Not Re-Enrolled as of 10/1/25
Transferred to another public district in MN	201
No Show (enrollment cancelled)	47
Moved out of MN	169
Transferred to Homeschool or Non-Public	73
Dropouts	4
Summer Graduate	12
Grand Total	506



Takeaways

Enrollment is at a 15-year high, and being significantly above projections helps with financial and programmatic stability

Our recruitment and retention efforts show sustained effectiveness (80% decrease in net loss over last three years)

- Overall open enrollment out down, open enrollment in up

Kindergarten numbers were above projections for the first time in three years

- Updated projections based on demographic study/birth records
- Birth records: 582 with EP address (Sept. 2019–Aug. 2020)

To support staffing and other decisions, we continuously monitor data — growth in all areas points to successful strategies broadly



Next steps – Enrollment

Continue analyzing data to determine most likely causes of this year's enrollment increase and impacts for the future

- Updated demographic study to help with enrollment planning

Continue work on systematizing retention efforts

- Withdrawal processes improvements
- Action based on data about why students are leaving (transferring districts, moving out of state, homeschooling, etc.)

Continue work to understand and improve the customer experience

- Develop plan for ongoing customer service standards for all staff

Continue successful kindergarten events, pilot updated CMS and EPHS events, and target marketing for EPO and ALC



Next steps – Budget

Truth and Taxation and Levy Approval (December 8, 2025)

Long-Range Financial Projection (January 5, 2026)

- 5-Year Forecast

2026–27 Enrollment Projection (January 26, 2026)

- Project next year enrollment

Spring 2026

- Demographic report and long-term enrollment projections



Events

Kindergarten Kickoff

CEDAR RIDGE
ELEMENTARY

Oct. 24,
11 a.m.-12 p.m.

EAGLE HEIGHTS
SPANISH IMMERSION

Oct. 20,
11 a.m.-12 p.m.

EDEN LAKE
ELEMENTARY

Oct. 22,
11 a.m.-12 p.m.

FOREST HILLS
ELEMENTARY

Oct. 15,
11 a.m.-12 p.m.

OAK POINT
ELEMENTARY

Oct. 7,
5-6 p.m.

PRAIRIE VIEW
ELEMENTARY

Oct. 23,
5-6 p.m.

Kindergarten Adventure Day

Nov. 12,
10 a.m.-12 p.m.

Nov. 5,
10 a.m.-12 p.m.

Nov. 19,
10:15 a.m.-12 p.m.

Nov. 11,
10 a.m.-12 p.m.

Nov. 18,
10 a.m.-12 p.m.

Nov. 21,
10-11:45 a.m.

Kinder Kidflick

Jan. 9,
5:30-7:30 p.m.

Jan. 20,
5:30-7:30 p.m.

Jan. 22,
5:30-7:30 p.m.

Jan. 15,
5:30-7:30 p.m.

Jan. 12,
5:30-7:30 p.m.

Jan. 22,
5:30-7:30 p.m.

EP ONLINE (virtual events)

Kindergarten Kickoff: Oct. 29, 5-6 p.m.

Classroom Visit (Science): Dec. 3, 12:30-1:30 p.m.

Classroom Visit (Writing): Feb. 11, 11 a.m.-12 p.m.

Classroom Visit (Math): April 15, 1-2 p.m.