



Oak Park Elementary School District 97

970 Madison ▪ Oak Park ▪ Illinois ▪ 60302 ▪ ph: 708.524.3000 ▪ fax: 708.524.3019 ▪ www.op97.org

TO: Dr. Albert G. Roberts, Superintendent of Schools

FROM: Therese M. O'Neill, Asst. Supt. Finance & Operations
Norman Lane, Director of Buildings & Grounds

SUBJECT: Playground Bid

DATE: February 26, 2013

At the January 22, 2013 meeting, the Board of Education approved the final schematics and cost estimates for the summer 2013 playgrounds for Hatch, Irving, Mann & Whittier Schools and authorized the landscape architectural firm, Altamanu, Inc. to finalize construction documents and release a bid for same (entire January 22, 2013 packet of materials is enclosed).

On February 14, 2013 three bids were received (Clauss Brothers, George's Landscaping, and Team REIL) and reviewed by the landscape architectural firm (attached is letter of evaluation and recommendation from Altamanu). On Friday, February 15, 2013, you met with Jan Arnold of the Park District to discuss solely the costs associated with the installation of a turf field on the Irving site and requested detailed information on same (see attachment on U10 and U8 turf soccer field installation prepared by Altamanu). On February 19, 2013, FAC (Facility Advisory Committee) met and reviewed all materials associated with these playground projects and requested some clarifications which have been provided to them.

On page 2 of the letter of recommendation from Altamanu, in the middle of the page, is delineated "Items mistakenly left off of the bid tab by design team", and FAC wanted to know if these items were included in the drawings. The answer was "Yes" – they were included in the drawings and one of the bidders detected same and quoted costs associated with this work. While this bidder was not the overall low bidder, these amounts will be the basis for discussion with the proposed recommended bidder.

Secondly, included in the original bid estimates was the addition of a 10% contingency (for unforeseen issues that may arise once construction began). The question FAC had regarding this is that the bids received either exceeded/came close/or were slightly under what the proposed estimates were with the inclusion of that 10%; however, included in the letter of recommendation, the consultants were recommending "that District 97 continue to assume a 10% contingency in addition to the bid numbers to ensure funds for any unforeseen items encountered during construction." In speaking with Altamanu, the original estimates anticipated bid numbers closer to their proposed estimates but, in fact, bids received reflected higher numbers of which they have no control. Therefore, they continue to recommend awarding the contract to Clauss Brothers at the specified bid amounts but caution the District to set-aside an additional 10%, if needed, of additional budget dollars. You may be reminded we did this last year (with the three playgrounds at Beye, Holmes and Longfellow) but did not expend the recommended 10% contingency.

Attached is a spreadsheet I created for both FAC and now you and Board that compares the bid estimates (by major category of work), inclusion of the original 10% contingency, and then totals. Also delineated is each vendor's respective bid, by school, and then total.

FAC supports awarding the ultimate contract to Clauss Brothers; however, between now and March 19, 2013, finalizing alternates by individual school PTOs needs to occur, determining if any participation from the Park District and, if yes, to what degree also needs to be finalized, as well as constructing the final additional contributors and their degree of participation to the Irving Schoolyard project has to be compiled. Therefore, at this time, there is no formal recommendation to be made to the Board. We are providing all the information received to date to the Board and anticipate discussing it at the February 26, 2013 meeting. At that time we will gather any further observations and concerns in order to bring a final and firm recommendation to the Board for its March 19, 2013 meeting, at which time it is anticipated an award of contract will occur.

tmo

Attachments

FOR ACTION

AGENDA ITEM:

January 22, 2013

SUBJECT: Playgrounds – Final Schematics & Cost Estimates – Summer 2013

MOTION: That the Board of Education approve the final schematics and cost estimates for the summer 2013 playgrounds for Hatch, Irving, Mann & Whittier schools and authorize the landscape architectural firm, Altamanu, to finalize construction documents and release a bid for same as outlined in the memorandum to the Superintendent dated January 8, 2013.



Oak Park Elementary School District 97

970 Madison ▪ Oak Park ▪ Illinois ▪ 60302 ▪ ph: 708.524.3000 ▪ fax: 708.524.3019 ▪ www.op97.org

TO: Dr. Albert G. Roberts, Superintendent of Schools

FROM: Therese M. O'Neill, Asst. Supt. Finance & Operations

SUBJECT: Final Cost Estimates – Playgrounds for Summer 2013

DATE: January 8, 2013

Included in the Board packet were original estimates for the four schools having work done this forthcoming summer and then, on Friday, a revised estimates for Irving were received and forwarding separately for the Board. Then yesterday, alternate #2 for Irving was further revised. Included in this packet are the final cost estimates for the four schools.

Attached are the formalized cost estimates, in summary, for each of the four schools:

Hatch –	Base Bid:	\$253,863.06	
	Rubberized Surface:	\$132,678.00	
	Alternate 1H:	\$ 1,429.45	
Mann -	Base Bid:	\$285,789.30	
	Rubberized Surface:	\$129,381.00	
	Alternate 4M:	\$ 16,990.05	
	Alternate 5M:	\$ 13,200.00	
Whittier -	Base Bid:	\$255,954.25	
	Rubberized Surface:	\$164,850.00	
	Alternate 6W:	\$ 24,819.30	
	Alternate 7W:	TBD	
Irving -	Base Bid:	\$840,423.32	\$917,548.50 (Revised)
	Rubberized Surface:	\$143,220.00	\$143,220.00
	Total	\$983,643.32	\$1,060,768.50
	Alternate 1: Base:	\$715,638.07	\$780,216.75 (Revised)
	Rubberized Surface:	\$143,220.00	\$143,220.00
	Total	\$858,858.07	\$923,436.75
	Alternate 2: Base:	\$1,111,139.12	\$1,052,996.37 (Revised)
	Rubberized Surface:	\$ 150,150.00	\$ 150,150.00
	Total	\$1,261,289.12	\$1,203,146.37

All three Irving scenarios have reduced in price from the conceptual schematics presented at the November 27, 2012 meeting:

	<u>November 27, 2013</u>	<u>January 8, 2013</u>
Base Bid	\$1,166,141.64	\$1,060,768.50
Alternate #1	\$ 987,609.00	\$ 923,436.75
Alternate #2	\$1,306,316.72	\$1,203,146.37

The cost estimate between November and now for the Mann site has increased by \$22,777. This is primarily due to the category of work entitled Removals and Site Preparation. At the time the original estimate was created, it was assumed that there would be no need to excavate and/or removal some of the existing utilities; however, upon detailed design creation, it was determined that more extension work would be necessary. Therefore, this category changed from \$13,331 to \$35,905.

The construction documents and these final cost estimates were reviewed with the FAC (Facility Advisory Committee) members prior to last evening's FAC meeting and were discussed in detail at the meeting last evening. Attached is a two-page document that includes all FAC members' observations specific to the construction documents and cost estimates. These are being forwarded to the Altamanu for their review, inclusion, or non-inclusion in the final construction documents; however, FAC will receive a written response from Altamanu to this overall document (item by item).

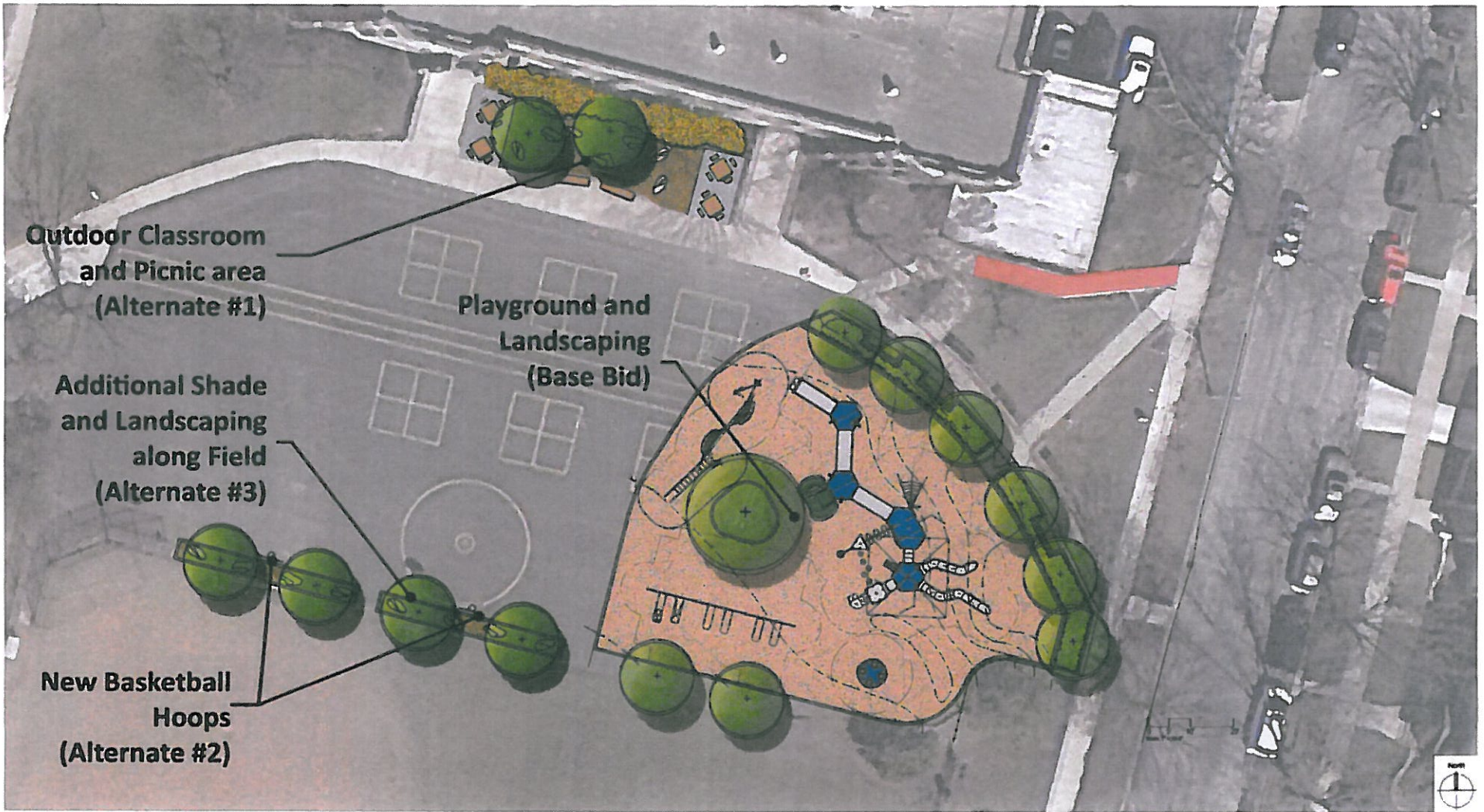
Overall, FAC was supportive of moving these documents along for final preparation and letting for bid.

We will be seeking authority to proceed with letting this work at the January 22, 2013 meeting. With this authority, it is intended to let bids commencing with January 28 and returned by February 13 with first review by the Board at its February 26 meeting and approval at the March 19 meeting. This timetable will allow FAC, at its scheduled February 19 meeting, to first review the bids received prior to promulgating to the Board for its first review. Further, this timetable will afford the successful contractor sufficient time to order materials and equipment as well as provide the firm the ability to mobilize work crews so work can commence immediately upon the close of school, anticipated on Thursday, May 30, with successful completion of all work prior to school commencing in late August, 2013.

tmo

attachments

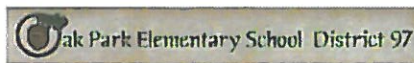
attachments

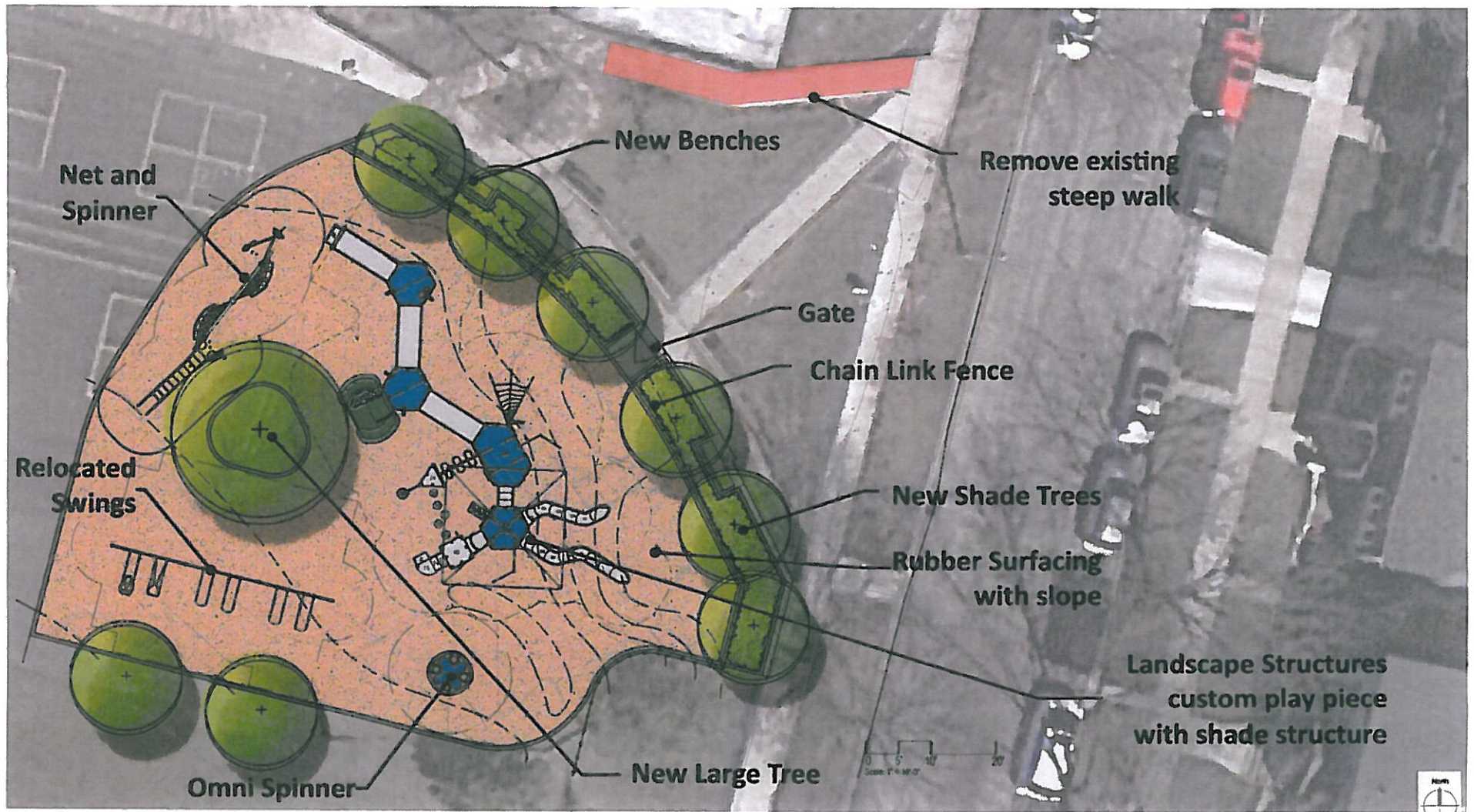


11.06.2012

Hatch Elementary School

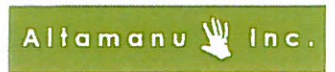
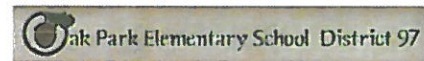
Oak Park District 97





11.06.2012

Hatch Elementary School
 Oak Park District 97



School District 97 Playground Improvements

2-Jan-13

Item	Unit	Qty	Unit Price	Total
------	------	-----	------------	-------

HATCH ELEMENTARY SCHOOL

Removals and Site Preparation

1	Site Preparation, mobilization, construction fencing, construction entrance, bonding costs	LS	1	\$5,750.00	\$5,750.00
2	Tree Protection Fencing Supply and Install	LF	460	\$5.00	\$2,300.00
3	Furnish, install and maintain erosion control measures	LS	1	\$600.00	\$600.00
4	Sawcut Pavement	LF	125	\$10.00	\$1,250.00
4	Remove and haul off existing concrete pavement	SY	30	\$30.00	\$900.00
5	Remove and haul off existing asphalt pavement	SY	290	\$30.00	\$8,700.00
6	Remove and haul off timbers	LF	435	\$9.50	\$4,132.50
6	Remove existing benches/pads/footings	EACH	2	\$250.00	\$500.00
7	Remove and haul off mulch in existing playground	SY	570	\$7.50	\$4,275.00
8	Remove and haul off playground equipment, foundations, playground surface, etc.	LS	1	\$5,000.00	\$5,000.00
9	Remove existing swings, store for relocation	LS	1	\$1,500.00	\$1,500.00
10	Root Prune trees performed by a Certified Arborist/Tree Surgeon as identified on the drawings prior to construction activities	LF	50	\$10.00	\$500.00
	<u>Subtotal Removals and Site Preparation</u>				\$35,407.50

Site Grading and Excavation

11	Perform all grading and excavation to obtain sub grades for pavement and other grading requirements as shown or noted on the Plans and in accordance with the specifications	LS	1	\$5,400.00	\$5,400.00
12	Transitional grading from edge of walk or curb to existing surface after walk installation	LS	1	\$1,200.00	\$1,200.00
	<u>Subtotal Site Grading and Excavation</u>				\$6,600.00

Paving and Surface

13	Furnish and install concrete walk, including site furnishing pads as shown on the drawings. (see eng detail)	SF	265	\$6.50	\$1,722.50
14	Furnish and Install asphalt patch as shown on the drawings. (see eng detail)	SY	25	\$50.00	\$1,250.00
15	Furnish and install 6" curbs as shown on the drawings. (see eng detail)	LF	510	\$18.00	\$9,180.00
16	Repaint lines for blacktop games and line up circles	LS	1	\$1,000.00	\$1,000.00
	<u>Subtotal Paving and Surface</u>				\$13,152.50

Playground Equipment

17	Apparatus: Furnish and install Landscape Structures NET CLIMBER (2650) as shown and noted on the plan and in play equipment schedule.	EA	1	\$19,103.00	\$19,103.00
18	Apparatus: Furnish and install Landscape Structures OMNI SPINNER as shown and noted on the plan and in play equipment schedule.	EA	1	\$8,330.00	\$8,330.00
19	Apparatus: Furnish and install Landscape Structures CUSTOM PLAY EQUIPMENT as shown and noted on the plan and in play equipment schedule.	EA	1	\$119,238.00	\$119,238.00
20	Apparatus: Reinstall EXISTING LANDSAPE STRUCTURES SWINGS noted on the plan and in play equipment schedule. Refurbish and repaint as needed	EA	1	\$3,000.00	\$3,000.00
	<u>Subtotal Apparatus Area</u>				\$149,671.00

	Item	Unit	Qty	Unit Price	Total
--	------	------	-----	------------	-------

HATCH ELEMENTARY SCHOOL

Site Furniture and Fencing

21	Furnish and install 8' IPE backed benches	EA	3	\$1,900.00	\$5,700.00
22	Wave Bike Rack on existing pavement	EA	1	\$900.00	\$900.00
23	Furnish and install 4' ht chain link fence as shown on plans.	LF	160	\$50.00	\$8,000.00
24	Furnish and install 4' ht chain link fence 4' wide gate as shown on plans.	EA	1	\$400.00	\$400.00
	<u>Subtotal Site Furniture</u>				\$15,000.00

Site Landscape Plantings

25	Furnish and install 3" Catalpa Shade Tree	EA	1	\$663.08	\$663.08
26	Furnish and install 3" London Planetree Shade Tree	EA	3	\$621.08	\$1,863.24
27	Furnish and install 3" Swamp White Oak Shade Tree	EA	3	\$609.00	\$1,827.00
28	Furnish and install 8" Elm Shade Tree	EA	1	\$3,300.00	\$3,300.00
29	Furnish and install #5 Container Green Mound Alpine Currant	EA	56	\$40.63	\$2,275.28
30	Furnish and install hardwood mulch in planted areas	SY	75	\$7.00	\$525.00
31	Prune existing trees as needed	LS	1	\$500.00	\$500.00
	<u>Subtotal Site Landscape Plantings</u>				\$10,953.60

	Total for base bid Improvements - Hatch Elementary				\$230,784.60
	10% Contingency				\$23,078.46
	GRAND TOTAL FOR BASE BID - HATCH ELEMENTARY SCHOOL				<u>\$253,863.06</u>

ALTERNATE #1H - Village of Oak Park Sidewalk removal/replacement

32	Remove and haul off existing sidewalk	SF	113	\$5.00	\$565.00
33	Furnish and install 5" thick walk to Village Standards (see eng detail)	SF	113	\$6.50	\$734.50
	TOTAL FOR ALTERNATE #1H - VOP Sidewalk				\$1,299.50
	10% Contingency				\$129.95
	GRAND TOTAL FOR ALTERNATE #1H				<u>\$1,429.45</u>

PLAYGROUND RUBBER SURFACING

34	Furnish and install concrete base to receive synthetic rubber surfacing at all playground surfaces	SF	6,318	\$7.00	\$44,226.00
35	Furnish and install synthetic rubber surfacing at all playground surfaces	SF	6,318	\$14.00	\$88,452.00
	TOTAL FOR PLAYGROUND SURFACING				\$132,678.00

PLAYGROUND CONCEPT PLAN



ALTERNATE



11.06.2012

School District 97 Playground Improvements

2-Jan-13

Item	Unit	Qty	Unit Price	Total
------	------	-----	------------	-------

MANN ELEMENTARY SCHOOL

Removals and Site Preparation

1	Site Preparation, mobilization, construction fencing, construction entrance, bonding costs	LS	1	\$3,750.00	\$3,750.00
2	Tree Protection Fencing Supply and Install	LF	245	\$5.00	\$1,225.00
3	Furnish, install and maintain erosion control measures	LS	1	\$2,075.00	\$2,075.00
4	Sawcut Pavement	LF	175	\$10.00	\$1,750.00
5	Remove and haul off existing concrete pavement	SY	32	\$30.00	\$960.00
6	Remove and haul off existing asphalt pavement	SY	370	\$30.00	\$11,100.00
7	Remove and haul off existing 8-6.12 curb & gutter	LF	135	\$15.00	\$2,025.00
8	Remove and haul off existing catch basin	EACH	1	\$400.00	\$400.00
9	Remove and haul off existing 8" pvc storm	LF	30	\$20.00	\$600.00
10	Remove existing benches/pads/footings	EACH	4	\$250.00	\$1,000.00
11	Remove and haul off mulch in existing playground	SY	640	\$7.50	\$4,800.00
12	Remove and haul off playground equipment, foundations, playground surface, etc.	LS	1	\$5,000.00	\$5,000.00
13	Root prune existing trees as shown on plans	LF	60	\$12.00	\$720.00
14	Selective trimming/pruning of existing hedge	LS'	1	\$500.00	\$500.00
Subtotal Removals and Site Preparation					\$35,905.00

Site Grading and Excavation

15	Perform all grading and excavation to obtain sub grades for pavement and other grading requirements as shown or noted on the Plans and in accordance with the specifications	LS	1	\$3,200.00	\$3,200.00
16	Transitional grading from edge of walk or curb to existing surface after walk installation	LS	1	\$1,200.00	\$1,200.00
Subtotal Site Grading and Excavation					\$4,400.00

Paving and Surface

17	Furnish and install concrete walk, including site furnishing pads as shown on the drawings. (see eng detail)	SF	1207	\$6.50	\$7,845.50
18	Furnish and install asphalt patch as shown on the drawings. (see eng detail)	SY	44	\$50.00	\$2,200.00
19	Furnish and install 6" curbs as shown on the drawings. (see eng detail)	LF	195	\$18.00	\$3,510.00
20	Repaint lines for blacktop games and line up circles	LS	1	\$1,000.00	\$1,000.00
Subtotal Paving and Surface					\$14,555.50

Utilities and Drainage

21	Furnish and install 48" catch basin	EA	1	\$2,400.00	\$2,400.00
22	Furnish and install 8" PVC Type SDR 26	LF	60	\$15.00	\$900.00
Subtotal Utilities and Drainage					\$3,300.00

Playground Equipment

	Item	Unit	Qty	Unit Price	Total
--	------	------	-----	------------	-------

MANN ELEMENTARY SCHOOL

23	Apparatus: Furnish and install Kompan BLAZER ELE400021 as shown and noted on the plan and in play equipment schedule.	EA	1	\$3,143.00	\$3,143.00
24	Apparatus: Furnish and install Kompan Supernova GXY944 as shown and noted on the plan and in play equipment schedule.	EA	1	\$8,793.54	\$8,793.54
25	Apparatus: Furnish and install Kompan GXY942 as shown and noted on the plan and in play equipment schedule.	EA	1	\$44,037.00	\$44,037.00
26	Apparatus: Furnish and install Kompan ELE5900296 as shown and noted on the plan and in play equipment schedule.	EA	1	\$71,340.50	\$71,340.50
27	Apparatus: Furnish and install Kompan CLASSIC DOME COR8842 as shown and noted on the plan and in play equipment schedule.	EA	1	\$46,480.00	\$46,480.00
28	Apparatus: Furnish and install Landscape Structures LS Oodle Swing as shown and noted on the plan and in play equipment schedule.	EA	1	\$5,908.00	\$5,908.00
	Subtotal Playground Equipment				\$179,702.04

Site Furniture and Fencing

29	Furnish and install 8' IPE backed benches	EA	4	\$1,900.00	\$7,600.00
30	Precast concrete picnic tables	EA	2	\$1,560.00	\$3,120.00
31	Furnish and install 4' ht chain link fence as shown on plans.	LF	10	\$50.00	\$500.00
32	Furnish and install 6' ht chain link fence as shown on plans.	EA	5	\$60.00	\$300.00
	Subtotal Site Furniture				\$11,520.00

Site Landscape Plantings

33	Furnish and install 3" Quaking Aspen Tree	EA	4	\$579.08	\$2,316.32
34	Furnish and install 5' HT Blue Heaven Juniper	EA	1	\$232.58	\$232.58
35	Furnish and install 36" ht. Aronia melanocarpa "Iroquis Beauty"	EA	20	\$68.78	\$1,375.60
36	Furnish and install #3 Cont. Itea virginica "Little Henry"	EA	28	\$47.78	\$1,337.84
37	Furnish and install 36" ht. Physocarpus opulifolius "Summer Wine"	EA	3	\$57.23	\$171.69
38	Furnish and install 36" ht. Viburnum "Blue Muffin"	EA	20	\$57.23	\$1,144.60
39	Furnish and install #1 Cont. Allium "Summer Beauty"	EA	14	\$11.88	\$166.32
40	Furnish and install #1 Cont. Bouteloua curtipendula	EA	14	\$13.75	\$192.50
41	Furnish and install #1 Cont. Panicum virgatum 'Northwind'	EA	8	\$14.38	\$115.04
42	Furnish and install #1 Cont. Schizachyrium scoparium	EA	9	\$14.38	\$129.42
43	Furnish and install hardwood mulch in planted areas	SY	92	\$7.00	\$644.00
44	Furnish and install topsoil as shown on details	CY	52	\$50.00	\$2,600.00
	Subtotal Site Landscape Plantings				\$10,425.91

	Total for base bid improvements - Mann Elementary				\$259,808.45
	10% Contingency				\$25,980.85
	GRAND TOTAL FOR BASE BID - MANN ELEMENTARY SCHOOL				<u>\$285,789.30</u>

	Item	Unit	Qty	Unit Price	Total
--	------	------	-----	------------	-------

MANN ELEMENTARY SCHOOL

ALTERNATE #4M - New Entry

45	Remove existing tree	EA	1	\$400.00	\$400.00
46	Furnish and install silt fence	LF	85	\$3.50	\$297.50
47	Furnish and install 8' ht construction fence	LF	171	\$10.00	\$1,710.00
48	Sawcut pavement	LF	51	\$10.00	\$510.00
49	Remove and haul off existing concrete pavement	SY	58	\$30.00	\$1,740.00
50	Remove and haul off existing asphalt pavement	SY	36	\$30.00	\$1,080.00
51	Remove existing chain link fence, posts and foundations	LF	12	\$10.00	\$120.00
52	Furnish and install concrete walk as shown on drawings	SF	1352	\$6.50	\$8,788.00
53	Furnish and install asphalt patch as shown on drawings	SY	8	\$50.00	\$400.00
54	Furnish and install chain link fence	LF	10	\$40.00	\$400.00
	TOTAL FOR ALTERNATE #4M - New Entry at Mann				\$15,445.50
	10% Contingency				\$1,544.55
	GRAND TOTAL FOR ALTERNATE #4M				\$16,990.05

ALTERNATE #5M - Trash Enclosure

55	Furnish and install 8' ht construction fence	LF	195	\$10.00	\$1,950.00
56	Remove and haul off existing trash enclosure fence, posts and foundations	LF	56	\$30.00	\$1,680.00
57	Furnish and install pavement patches where existing foundations were located	LS	1	\$500.00	\$500.00
58	Sawcut existing asphalt for new concrete pad	LF	60	\$10.00	\$600.00
59	Remove and haul off existing asphalt pavement and base	SY	39	\$40.00	\$1,560.00
60	Furnish and install concrete pad for trash enclosure	SY	28	\$70.00	\$1,960.00
61	Furnish and install 6' H chain link fence	LF	55	\$50.00	\$2,750.00
62	Furnish and install 5' W x 6'H chain link gate	EA	1	\$350.00	\$350.00
63	Furnish and install asphalt patch as shown on drawings	SY	13	\$50.00	\$650.00
	TOTAL FOR ALTERNATE #5M - New Entry at Mann				\$12,000.00
	10% Contingency				\$1,200.00
	GRAND TOTAL FOR ALTERNATE #5M				\$13,200.00

PLAYGROUND RUBBER SURFACING

64	Furnish and install concrete base to receive synthetic rubber surfacing at all playground surfaces	SF	6,161	\$7.00	\$43,127.00
65	Furnish and install synthetic rubber surfacing at all playground surfaces	SF	6,161	\$14.00	\$86,254.00
	TOTAL FOR PLAYGROUND SURFACING				\$129,381.00

5 - 10 PLAYGROUND CONCEPT PLAN

- 3 PROPOSED SHADE TREES IN MULCH BED
- ADDITIONAL CONCRETE FLUSH CURB
- ADDITIONAL RUBBER SURFACING
- RELOCATED EXISTING STAND-UP SPINNER
- RELOCATED EXISTING SADDLE SPINNER



11. 13. 2012

School District 97 Playground Improvements

2-Jan-13

Item	Unit	Qty	Unit Price	Total
------	------	-----	------------	-------

WHITTIER ELEMENTARY SCHOOL

Removals and Site Preparation

1	Site Preparation, mobilization, construction fencing, construction entrance, bonding costs	LS	1	\$4,630.00	\$4,630.00
2	Tree Protection Fencing Supply and Install	LF	375	\$5.00	\$1,875.00
3	Remove Small Trees 8" caliper or smaller and grind stump to depth of 12"	EA	5	\$500.00	\$2,500.00
4	Furnish and install silt fence	LF	305	\$3.50	\$1,067.50
5	Furnish, install and maintain other erosion control measures	LS	1	\$600.00	\$600.00
6	Sawcut Pavement (including North concrete for garden space)	LF	326	\$10.00	\$3,260.00
7	Remove and haul off existing concrete pavement	SY	108	\$30.00	\$3,240.00
8	Remove and haul off existing asphalt pavement	SY	315	\$30.00	\$9,450.00
9	Remove and haul off timbers and plastic edging around play surfaces	LF	351	\$8.00	\$2,808.00
10	Remove existing bench (store, to be relocated)	EACH	1	\$250.00	\$250.00
11	Remove and dispose of existing benches and footings	EACH	6	\$250.00	\$1,500.00
12	Remove and haul off mulch in 5-12 year old playground	SY	748	\$7.50	\$5,610.00
13	Remove and stockpile mulch in 2-5 year old playground	SY	105	\$6.00	\$630.00
14	Remove and haul off playground equipment, foundations, playground surface, etc.	LS	1	\$5,000.00	\$5,000.00
15	Remove existing fence and footings	LF	18	\$25.00	\$450.00
16	Remove and haul off existing concrete ramp (2-5 playground)	SY	5	\$30.00	\$150.00
17	Root Prune trees performed by a Certified Arborist/Tree Surgeon as identified on the drawings prior to construction activities	LF	20	\$10.00	\$200.00
	Subtotal Removals and Site Preparation				\$43,220.50

Site Grading and Excavation

18	Perform all grading and excavation to obtain sub grades for pavement and other grading requirements as shown or noted on the Plans and in accordance with the specifications	LS	1	\$6,400.00	\$6,400.00
19	Transitional grading from edge of walk or curb to existing surface after walk installation	LS	1	\$1,200.00	\$1,200.00
	Subtotal Site Grading and Excavation				\$7,600.00

Paving and Surface

20	Furnish and install concrete walk, including site furnishing pads as shown on the drawings. (see eng detail)	SF	657	\$6.50	\$4,270.50
21	Furnish and install asphalt patch as shown on the drawings. (see eng detail)	SY	65	\$30.00	\$1,950.00
22	Furnish and install 3" mulch in planting bed areas. (see specifications)	SY	170	\$7.00	\$1,190.00
23	Furnish and install 6" flush curb as shown on the drawings. (see eng detail)	LF	561	\$24.00	\$13,464.00
24	Repaint lines for blacktop games and line up circles	LS	1	\$1,000.00	\$1,000.00
	Subtotal Paving and Surface				\$21,874.50

Playground Equipment

25	Apparatus: Furnish and install Kompan SUPERNOVA GXY944 as shown and noted on the plan and in play equipment schedule.	EA	1	\$8,739.54	\$8,739.54
----	--	----	---	------------	------------

	Item	Unit	Qty	Unit Price	Total
--	------	------	-----	------------	-------

WHITTIER ELEMENTARY SCHOOL

26	Apparatus: Furnish and install Kompan <u>Nerejde GXY937</u> as shown and noted on the plan and in play equipment schedule.	EA	1	\$25,452.00	\$25,452.00
27	Apparatus: Furnish and install Landscape Structures <u>CUSTOM PLAY EQUIPMENT</u> as shown and noted on the plan and in play equipment schedule.	EA	1	\$106,106.14	\$106,106.14
28	Apparatus: Furnish and install Landscape Structures <u>OODLE SWING</u> noted on the plan and in play equipment schedule.	EA	1	\$5,908.00	\$5,908.00
29	Apparatus: Reinstall <u>EXISTING SADDLE SPINNER</u> noted on the plan and in play equipment schedule.	EA	1	\$400.00	\$400.00
30	Apparatus: Reinstall <u>EXISTING STAND UP SPINNER</u> noted on the plan and in play equipment schedule.	EA	1	\$500.00	\$500.00
31	Clean and repaint existing play equipment as needed	LS	1	\$2,500.00	\$2,500.00
	Subtotal Apparatus Area				\$149,605.68

Site Furniture and Fencing

32	Reinstall existing bench in 2-5 year old playground area	LS	1	\$500.00	\$500.00
33	Furnish and install 4' ht chain link fence as shown on plans.	LF	45	\$50.00	\$2,250.00
34	Furnish and install 4' ht chain link fence 8' wide double leaf gate as shown on plans.	EA	1	\$800.00	\$800.00
35	Furnish and install 4' ht chain link fence 4' wide gate as shown on plans.	EA	1	\$400.00	\$400.00
36	Repair and paint existing chain link fence	LS	1	\$2,000.00	\$2,000.00
	Subtotal Site Furniture				\$5,950.00

Site Landscape Plantings

37	Furnish and install prepared topsoil for planting bed areas	CY	67	\$50.00	\$3,350.00
38	Furnish and install sod as shown on drawings	SY	78	\$7.50	\$585.00
39	Prune existing trees	LS	1	\$500.00	\$500.00
	Subtotal Site Landscape Plantings				\$4,435.00

	Total for base bid Improvements - Whittier Elementary				\$232,685.68
	10% Contingency				\$23,268.57
	GRAND TOTAL FOR BASE BID - WHITTIER ELEMENTARY SCHOOL				\$255,954.25

ALTERNATE #6W - GROUP SWING AT 2-5 PLAYGROUND

40	Perform grading and excavation to obtain sub grades for pavement	LS	1	\$800.00	\$800.00
41	Perform transitional grading from edge of walk or curb to existing surface after walk installation	LS	1	\$400.00	\$400.00
42	Furnish and install 5" thick walk, including site furnishing pads as shown on drawings	SF	40	\$6.50	\$260.00
43	Concrete base to receive synthetic rubber surfacing	SF	620	\$7.00	\$4,340.00
44	Synthetic rubber surfacing	SF	620	\$14.00	\$8,680.00
45	Furnish and install 6" flush curb	LF	92	\$24.00	\$2,208.00
46	Deduct 6" flush curb to be installed as part of base bid	LF	17	\$24.00	-\$408.00

	Item	Unit	Qty	Unit Price	Total
--	------	------	-----	------------	-------

WHITTIER ELEMENTARY SCHOOL

47	Furnish and install Landscape Structures: OODLE SWING 2-5 Year Old	EA	1	\$5,908.00	\$5,908.00
48	Furnish and install new sod	SY	50	\$7.50	\$375.00
	TOTAL FOR ALTERNATE #6W - GROUP SWING AT 2-5 PLAY				\$22,563.00
	10% Contingency				\$2,256.30
	GRAND TOTAL FOR ALTERNATE #6W				\$24,819.30

ALTERNATE #7W - WATER SUPPLY FOR GARDEN SPACE

49	Furnish and install Yard Hydrant Woodford Model Y95 or approved equivalent	EA	1	\$600.00	\$600.00
50	Reduced Pressure Zone, enclosure and all required material	EA	1	\$450.00	\$450.00
51	Water service pipe, trench, backfill, patching and all other required items. Contractor to provide unit price. Routing of water service to be determined based on where District 97 can provide a building stub.	LS	TBD	TBD	TBD
	GRAND TOTAL FOR ALTERNATE #7W - WATER SUPPLY				TBD

PLAYGROUND RUBBER SURFACING

52	Furnish and install concrete base to receive synthetic rubber surfacing at all playground surfaces	SF	7,850	\$7.00	\$54,950.00
53	Furnish and install synthetic rubber surfacing at all playground surfaces	SF	7,850	\$14.00	\$109,900.00
	TOTAL FOR PLAYGROUND SURFACING				\$164,850.00



Irving Elementary Base Bid





Irving Elementary Base Bid Opinion of Probable Costs:

Refurbished Parking Lot:

Alternate II Mill and Relay Existing Parking Lot, New Fence & Concrete Trash Enclosure	\$81,240
---	-----------------

180 FT x 114 FT Field:

REMOVALS & EXCAVATION	\$280,370.00
ARTIFICIAL SURFACING	\$209,847.40
DRAINAGE & UTILITIES	\$105,755.00
NEW TREES & TOPSOIL	\$18,200.00
NEW FENCE	\$23,400.00
SUBTOTAL	\$637,572.40
10% CONTINGENCY	\$63,757.24
TOTAL FOR FIELD	\$701,329.64

New Playground (Concept B):

REMOVALS	\$19,800
SITE GRADING, EXCAVATION, DRAINAGE & UTILITIES:	\$10,500
ASPHALT AND CONC. WALK	\$27,450
PLAY EQUIPMENT & RUBBER SURFACE	\$272,080
SITE FURNITURE & LANDSCAPES	\$18,872
SUBTOTAL	\$348,702
10% CONTINGENCY	\$34,870
TOTAL FOR IRVING SCHOOL PLAYGROUND IMPROVEMENTS	\$383,572

Irving Elementary Base Bid Opinion of Probable Cost: **\$1,166,141.64**

Add add'l \$160,000 for sport lighting

Item	Unit	Qty	Unit Price	Total
------	------	-----	------------	-------

IRVING ELEMENTARY SCHOOL - Base BID

Removals and Site Preparation

1	Construction Entrance	EA	1	\$1,500.00	\$1,500.00
2	Tree Protection Fencing Supply and Install	LF	307	\$5.00	\$1,535.00
3	Furnish and install silt fence	LF	560	\$3.50	\$1,960.00
4	Furnish and install inlet protection	EA	11	\$200.00	\$2,200.00
5	Furnish and install 8' high Chain link construction fence	LF	833	\$10.00	\$8,330.00
6	Sawcut Pavement	LF	930	\$10.00	\$9,300.00
7	Remove and haul off existing concrete pavement	SY	125	\$30.00	\$3,750.00
8	Remove and haul off concrete curb & gutter	LF	407	\$30.00	\$12,210.00
9	Remove and haul off existing asphalt pavement	SY	3550	\$30.00	\$106,500.00
10	Remove and haul off timbers	LF	146	\$9.50	\$1,387.00
11	Remove and haul off existing catch basin	EACH	1	\$750.00	\$750.00
12	Remove and haul off existing chain link fence, posts and foundations	LF	460	\$25.00	\$11,500.00
13	Remove and haul off existing benches and pads	EACH	4	\$250.00	\$1,000.00
14	Remove and haul off mulch	SY	1080	\$7.50	\$8,100.00
15	Remove and haul off playground equipment, foundations, playground surface, etc.	LS	1	\$10,000.00	\$10,000.00
Subtotal Removals and Site Preparation					\$180,022.00

Tree Root Pruning

16	Root Prune trees performed by a Certified Arborist/Tree Surgeon as identified on the drawings prior to construction activities	LF	60	\$10.00	\$600.00
----	--	----	----	---------	----------

Site Grading and Excavation

17	Perform all grading and excavation to obtain sub grades for pavement and other grading requirements as shown or noted on the Plans and in accordance with the specifications	LS	1	\$29,000.00	\$29,000.00
18	Remove and haul subbase	LS	1	\$42,500.00	\$42,500.00
Subtotal Site Grading and Excavation					\$71,500.00

Paving and Surface

19	Furnish and install 5" Thick walk, including site furnishing pads as shown on the drawings. (see eng detail)	SF	2300	\$7.00	\$16,100.00
20	Furnish and install 8" Thick concrete as shown on the drawings. (see eng detail)	SF	187	\$9.00	\$1,683.00
21	Furnish and install asphalt patch as shown on the drawings. (see eng detail)	SY	390	\$50.00	\$19,500.00
22	Furnish and install 3" mulch shown on the drawings. (see specifications)	SY	744	\$9.00	\$6,696.00
23	Furnish and install 6" flush curb as shown on the drawings. (see eng detail)	LF	715	\$15.00	\$10,725.00
24	Furnish and install 6" non flush curb as shown on the drawings. (see eng detail)	LF	150	\$18.00	\$2,700.00
25	Furnish and install impermeable liner as shown on the drawings (see eng detail)	SF	25480	\$1.50	\$38,220.00
26	Furnish and install removable panel for manhole under field (see eng detail)	EA	1	\$450.00	\$450.00
27	Furnish and install nailer board (see eng detail)	LF	655	\$8.00	\$5,240.00
28	Furnish and install synthetic turf field (including color markings)	SF	25480	\$5.50	\$140,140.00
29	Furnish, install and fine grade min 6" Vulcan 210 aggregate base course (see eng detail)	SY	2831	\$5.00	\$14,155.00
30	Pavement Markings in parking area	LS	1	\$400.00	\$400.00
31	Mill and Relay 2" asphalt surface	SY	1850	\$22.00	\$40,700.00
32	Leveling Binder (Machine Course), N 50	Ton	106	\$85.00	\$9,010.00
33	Full Depth Concrete Patch in mill area - 8" CA-6, 4" Asphalt Binder Course NS0 (Surface Course Included in item directly above) Quantity to be measured in field by engineer.	SY	270	\$50.00	\$13,500.00
Subtotal Paving and Surface					\$319,219.00

Utilities

34	48" Catch Basin, including riser, half trap & trench backfill	EA	5	\$2,400.00	\$12,000.00
35	Furnish and install 18" Reinforced Concrete Pipe, including trench backfill	LF	427	\$24.00	\$10,248.00
36	Furnish and install 8" PVC pipe SDR 26	LF	39	\$15.00	\$585.00
37	Furnish and install ADS Advanedge 1"x12" drains and all associated appertances to connect the Advanedge pipes to the sewer mains (see eng details)	LF	1,210	\$12.00	\$14,520.00
Subtotal Utilities					\$37,353.00

Item	Unit	Qty	Unit Price	Total
------	------	-----	------------	-------

IRVING ELEMENTARY SCHOOL - Base BID

Apparatus Area

38	Apparatus: Furnish and install Kompan <u>STELLA NOVA QXY244</u> as shown and noted on the plan and in play equipment schedule.	EA	1	\$9,770.60	\$9,770.60
39	Apparatus: Furnish and install Kompan <u>PERFORMER DOME COR8842</u> as shown and noted on the plan and in play equipment schedule.	EA	1	\$46,230.80	\$46,230.80
40	Apparatus: Furnish and install Kompan <u>CORCORC PACKAGE PAK-10/2</u> as shown and noted on the plan and in play equipment schedule.	EA	1	\$16,928.80	\$16,928.80
41	Apparatus: Furnish and install Landscape Structures <u>CUSTOM PLAY</u> (CODE:OAK12IRV8C) noted on the plan and in play equipment schedule.	EA	1	\$85,687.00	\$85,687.00
42	Apparatus: Furnish and install Landscape Structures <u>OMNISPIN SPINNER</u> noted on the plan and in play equipment schedule.	EA	1	\$8,330.00	\$8,330.00
43	Apparatus: Furnish and install Landscape Structures <u>SNACK SHACK</u> noted on the plan and in play equipment schedule.	EA	1	\$6,692.00	\$6,692.00
Subtotal Apparatus Area					\$173,639.20

Site Furniture

44	Furnish and install 8' long backless IPE bench (surface mount) as shown on plans.	EA	1	\$1,001.00	\$1,001.00
45	Furnish and install 8' long backed IPE bench (surface mount) as shown on plans.	EA	2	\$1,708.00	\$3,416.00
46	Furnish and install star bench (small)	EA	4	\$1,204.00	\$4,816.00
47	Furnish and install trash enclosure fence	LF	45	\$100.00	\$4,500.00
48	Furnish and install fence around synthetic field	LF	400	\$75.00	\$30,000.00
49	Furnish and install 4' ht. chain link fence gate (single)	EA	1	\$500.00	\$500.00
50	Furnish and install 4' ht. chain link fence gate (double single)	EA	1	\$1,000.00	\$1,000.00
Subtotal Site Furniture					\$45,233.00

Site Landscape Plantings

51	Populus tremuloides, 2" CAL.	EA	4	\$378.00	\$1,512.00
52	Ulmus 'Accolade', 3" CAL	EA	5	\$516.08	\$2,580.38
53	Crataegus crusgalli var. inermis, 3" CAL	EA	3	\$400.58	\$1,201.73
54	Amelanchier x grandiflora 'Autumn Brilliance', 48" HT.	EA	2	\$157.50	\$315.00
55	Cornus racemosa, 48" HT.	EA	3	\$51.98	\$155.93
56	Hamamelis vernalis, 48" HT.	EA	1	\$182.70	\$182.70
57	Itea virginica 'Little Henry', #3 CONT.	EA	13	\$47.78	\$621.08
Subtotal Site Landscape Plantings					\$6,568.80

TOTAL FOR BASE BID				\$834,135.00
10% CONTINGENCY				\$83,413.50
GRAND TOTAL FOR BASE BID - IRVING ELEMENTARY SCHOOL				\$917,548.50

PLAYGROUND RUBBER SURFACING

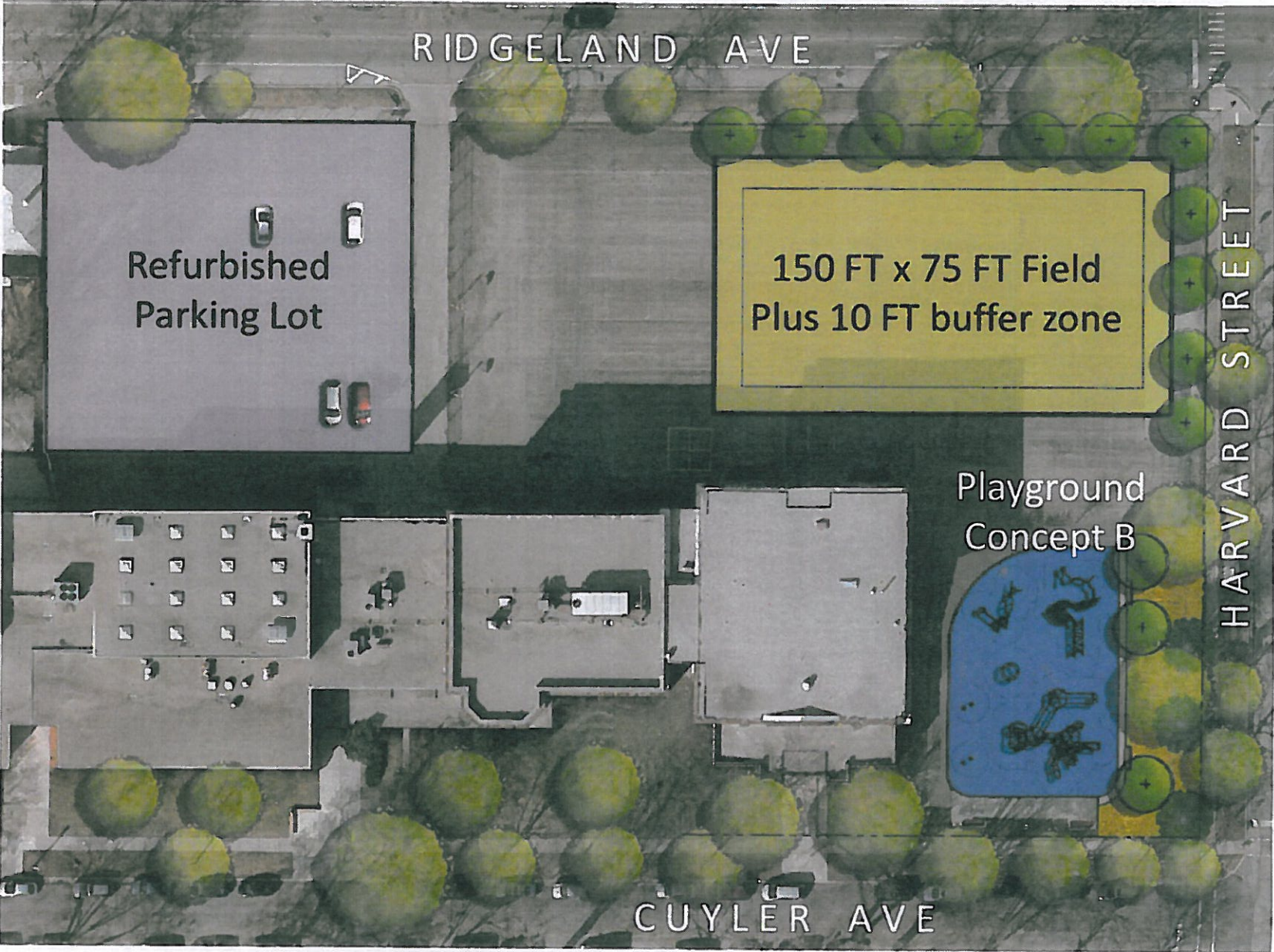
Furnish and install concrete base to receive synthetic rubber surfacing at all playground surfaces	SF	6,200	\$7.00	\$43,400.00
Furnish and install synthetic rubber surfacing at all playground surfaces	SF	6,200	\$14.00	\$86,800.00
TOTAL				\$130,200.00
10% CONTINGENCY				\$13,020.00
GRAND TOTAL FOR RUBBER SURFACING - IRVING ELEMENTARY SCHOOL				\$143,220.00

GRAND TOTAL FOR BASE BID INCLUDING RUBBER SURFACING- IRVING ELEMENTARY SCHOOL				\$1,060,768.50
--	--	--	--	-----------------------

All items not listed shall be considered incidental to the contract.



Alternate 1:



RIDGELAND AVE

Refurbished
Parking Lot

150 FT x 75 FT Field
Plus 10 FT buffer zone

Playground
Concept B

HARVARD STREET

CUYLER AVE



Alternate 1 Opinion of Probable Costs:

Refurbished Parking Lot:

Alternate II Mill and Relay Existing Parking Lot, New Fence & Concrete Trash Enclosure	\$81,240
---	-----------------

150 FT x 75 FT Field:

REMOVALS & EXCAVATION	\$230,950
ARTIFICIAL SURFACING	\$130,008
DRAINAGE & UTILITIES	\$68,562
NEW TREES & TOPSOIL	\$24,300
NEW FENCE	\$21,450
SUBTOTAL	\$475,270
10% CONTINGENCY	\$47,527
TOTAL FOR FIELD	\$522,797

New Playground (Concept B):

REMOVALS	\$19,800
SITE GRADING, EXCAVATION, DRAINAGE & UTILITIES:	\$10,500
ASPHALT AND CONC. WALK	\$27,450
PLAY EQUIPMENT & RUBBER SURFACE	\$272,080
SITE FURNITURE & LANDSCAPES	\$18,872
SUBTOTAL	\$348,702
10% CONTINGENCY	\$34,870
TOTAL FOR IRVING SCHOOL PLAYGROUND IMPROVEMENTS	\$383,572

Alternate 1 Opinion of Probable Costs:

\$987,609

Add add'l \$160,000 for sport lighting

Item	Unit	Qty	Unit Price	Total
------	------	-----	------------	-------

IRVING ELEMENTARY SCHOOL - Alternate 1

Removals and Site Preparation

1	Construction Entrance	EA	1	\$1,500.00	\$1,500.00
2	Tree Protection Fencing Supply and Install	LF	307	\$5.00	\$1,535.00
3	Furnish and install silt fence	LF	535	\$3.50	\$1,872.50
4	Furnish and install inlet protection	EA	10	\$200.00	\$2,000.00
5	Furnish and install 8' high Chain link construction fence	LF	893	\$10.00	\$8,930.00
6	Sawcut Pavement	LF	1045	\$10.00	\$10,450.00
7	Remove and haul off existing concrete pavement	SY	125	\$30.00	\$3,750.00
8	Remove and haul off concrete curb & gutter	LF	381	\$30.00	\$11,430.00
9	Remove and haul off existing asphalt pavement	SY	2550	\$30.00	\$76,500.00
10	Remove and haul off timbers	LF	0	\$8.00	\$0.00
11	Remove and haul off existing catch basin	EACH	1	\$750.00	\$750.00
12	Remove and haul off existing chain link fence, posts and foundations	LF	435	\$25.00	\$10,875.00
13	Remove and haul off existing benches and pads	EACH	4	\$250.00	\$1,000.00
14	Remove and haul off mulch	SY	1080	\$7.50	\$8,100.00
15	Remove and haul off playground equipment, foundations, playground surface, etc.	LS	1	\$10,000.00	\$10,000.00
Subtotal Removals and Site Preparation					\$148,092.50

Tree Root Pruning

16	Root Prune trees performed by a Certified Arborist/Tree Surgeon as identified on the drawings prior to construction activities	LF	60	\$10.00	\$600.00
----	--	----	----	---------	----------

Site Grading and Excavation

17	Perform all grading and excavation to obtain sub grades for pavement and other grading requirements as shown or noted on the Plans and in accordance with the specifications	LS	1	\$29,000.00	\$29,000.00
18	Remove and haul SUBBASE	LS	1	\$34,000.00	\$34,000.00
Subtotal Site Grading and Excavation					\$63,000.00

Paving and Surface

19	Furnish and install 5" Thick walk, including site furnishing pads as shown on the drawings. (see eng detail)	SF	2400	\$7.00	\$16,800.00
20	Furnish and install 8" Thick concrete as shown on the drawings. (see eng detail)	SF	187	\$9.00	\$1,683.00
21	Furnish and install asphalt patch as shown on the drawings. (see eng detail)	SY	275	\$50.00	\$13,750.00
22	Furnish and install 3" mulch shown on the drawings. (see specifications)	SY	744	\$9.00	\$6,696.00
23	Furnish and install 6" flush curb as shown on the drawings. (see eng detail)	LF	590	\$15.00	\$8,850.00
24	Furnish and install 6" non flush curb as shown on the drawings. (see eng detail)	LF	195	\$18.00	\$3,510.00
25	Furnish and install impermeable liner as shown on the drawings (see eng detail)	SF	16150	\$1.50	\$24,225.00
26	Furnish and install removable panel for manhole under field (see eng detail)	EA	1	\$450.00	\$450.00
27	Furnish and install naller board (see eng detail)	LF	530	\$8.00	\$4,240.00
28	Furnish and install synthetic turf field (including color markings)	SF	16150	\$5.50	\$88,825.00
29	Furnish, install and fine grade min 6" Vulcan 210 aggregate base course (see eng detail)	SY	1795	\$5.00	\$8,975.00
30	Pavement Markings in parking area	LS	1	\$400.00	\$400.00
31	Mill and Relay 2" asphalt surface	SY	1850	\$22.00	\$40,700.00
32	Leveling Binder (Machine Course), N 50	Ton	106	\$85.00	\$9,010.00
33	Full Depth Concrete Patch in mill area - 8" CA-6, 4" Asphalt Binder Course N50 (Surface Course included in item directly above). Quantity to be measured in field by engineer.	SY	270	\$50.00	\$13,500.00
Subtotal Paving and Surface					\$241,614.00

Utilities

34	48" Catch Basin, including riser, half trap & trench backfill	EA	4	\$2,400.00	\$9,600.00
35	Furnish and install 18" Reinforced Concrete Pipe, including trench backfill	LF	335	\$24.00	\$8,040.00
36	Furnish and install 8" PVC pipe SDR 26	LF	41	\$15.00	\$615.00
37	Furnish and install ADS Advanedge 1"x12" drains and all associated appertances to connect the Advanedge pipes to the sewer mains (see eng details)	LF	750	\$12.00	\$9,000.00
Subtotal Utilities					\$27,255.00

Apparatus Area

38	Apparatus: Furnish and install Kompan <u>STELLA NOVA GKY944</u> as shown and noted on the plan and in play equipment schedule.	EA	1	\$9,770.60	\$9,770.60
39	Apparatus: Furnish and install Kompan <u>PERFORMER DOME COR8842</u> as shown and noted on the plan and in play equipment schedule.	EA	1	\$46,230.80	\$46,230.80
40	Apparatus: Furnish and install Kompan <u>COROCORD PACKAGE PAK-10/2</u> as shown and noted on the plan and in play equipment schedule.	EA	1	\$16,928.80	\$16,928.80
41	Apparatus: Furnish and install Landscape Structures <u>CUSTOM PLAY</u> (CODE:OAK12IRV8C) noted on the plan and in play equipment schedule.	EA	1	\$85,687.00	\$85,687.00
42	Apparatus: Furnish and install Landscape Structures <u>OMNISPIN SPINNER</u> noted on the plan and in play equipment schedule.	EA	1	\$8,330.00	\$8,330.00
43	Apparatus: Furnish and install Landscape Structures <u>SNACK SHACK</u> noted on the plan and in play equipment schedule.	EA	1	\$6,692.00	\$6,692.00
	Subtotal Apparatus Area				\$173,639.20

Site Furniture

44	Furnish and Install 8' long backless IPE bench (surface mount) as shown on plans.	EA	1	\$1,001.00	\$1,001.00
45	Furnish and Install 8' long backed IPE bench (surface mount) as shown on plans.	EA	2	\$1,708.00	\$3,416.00
46	Furnish and Install star bench (small)	EA	4	\$1,204.00	\$4,816.00
47	Furnish and install trash enclosure fence	LF	45	\$100.00	\$4,500.00
48	Furnish and install fence around synthetic field	LF	400	\$75.00	\$30,000.00
49	Furnish and Install 4' ht. chain link fence gate (single)	EA	1	\$500.00	\$500.00
50	Furnish and Install 4' ht. chain link fence gate (double single)	EA	1	\$1,000.00	\$1,000.00
	Subtotal Site Furniture				\$45,233.00

Site Landscape Plantings

51	Celtis occidentalis, 3" CAL	EA	3	\$453.08	\$1,359.23
52	Populus tremuloides, 2" CAL	EA	4	\$378.00	\$1,512.00
53	Ulmus 'Accolade', 3" CAL	EA	5	\$516.08	\$2,580.38
54	Crataegus crusgalli var. Inermis, 3" CAL	EA	3	\$400.58	\$1,201.73
55	Syringa pekinensis 'China Snow', 3" CAL	EA	3	\$642.08	\$1,926.23
56	Amelanchier x grandiflora 'Autumn Brilliance', 48" HT.	EA	2	\$157.50	\$315.00
57	Cornus racemosa, 48" HT.	EA	3	\$51.98	\$155.93
58	Hamamelis vernalis, 48" HT.	EA	1	\$182.70	\$182.70
59	Itea virginica 'Little Henry', #3 CONT.	EA	13	\$47.78	\$621.08
	Subtotal Site Landscape Plantings				\$9,854.25

TOTAL FOR ALTERNATE 1					\$709,287.95
10% CONTINGENCY					\$70,928.80
GRAND TOTAL FOR ALTERNATE 1- IRVING ELEMENTARY SCHOOL					\$780,216.75

PLAYGROUND RUBBER SURFACING

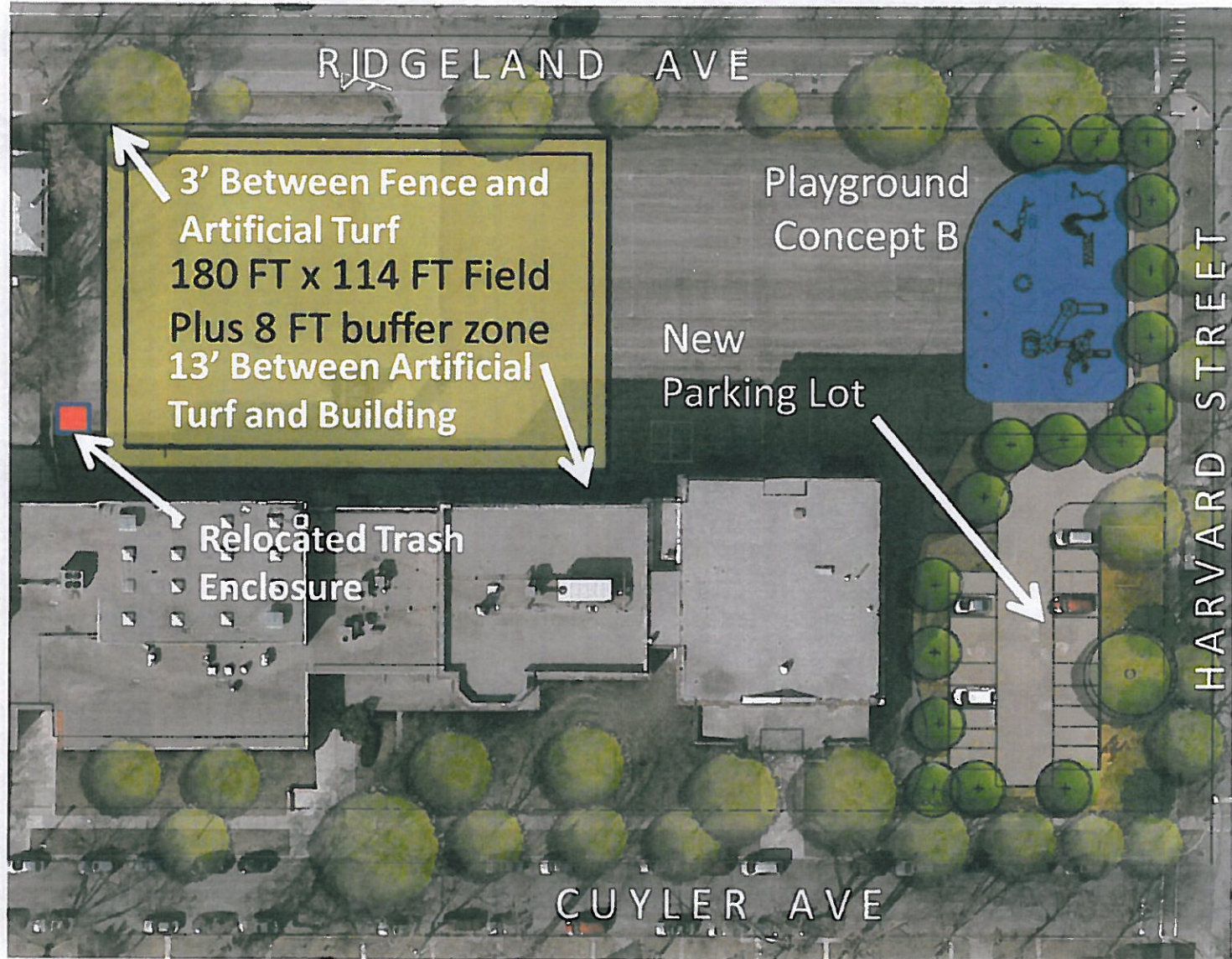
Furnish and install concrete base to receive synthetic rubber surfacing at all playground surfaces	SF	6,200	\$7.00	\$43,400.00
Furnish and install synthetic rubber surfacing at all playground surfaces	SF	6,200	\$14.00	\$86,800.00
TOTAL				\$130,200.00
10% CONTINGENCY				\$13,020.00
GRAND TOTAL FOR RUBBER SURFACING - IRVING ELEMENTARY SCHOOL				\$143,220.00

GRAND TOTAL FOR ALTERNATE 1 INCLUDING RUBBER SURFACING- IRVING ELEMENTARY SCHOOL					\$923,436.75
---	--	--	--	--	---------------------

All items not listed shall be considered incidental to the contract.



Alternate 2:





Alternate 2 Opinion of Probable Costs:

Parking Lot (new):

REMOVALS & EXCAVATION	\$25,550.00
GRADING	\$6,000.00
DRAINAGE & UTILITIES	\$16,000.00
NEW PAVING, CURB AND GUTTER	\$60,031.25
NEW FENCE	\$14,300.00
NEW TREES, SOIL AND SOD	\$24,900.00
SUBTOTAL	\$146,781.25
10% CONTINGENCY	\$14,678.13
TOTAL FOR PARKING LOT	\$161,459.38

180 FT x 114 FT Field:

REMOVALS & EXCAVATION	\$280,370.00
ARTIFICIAL SURFACING	\$209,847.40
DRAINAGE & UTILITIES	\$105,755.00
NEW SHRUBS & TOPSOIL	\$7,056.00
NEW FENCE	\$23,400.00
RELOCATED TRASH	\$8,000.00
SUBTOTAL	\$634,428.40
10% CONTINGENCY	\$63,442.84
TOTAL FOR FIELD	\$697,871.24

New Playground (Concept B):

REMOVALS	\$56,050.00
SITE GRADING, EXCAVATION, DRAINAGE & UTILITIES	\$13,000.00
ASPHALT AND CONCRETE WALK	\$27,450.00
PLAY EQUIPMENT & RUBBER SURFACE	\$272,080.00
SITE FURNITURE & LANDSCAPES	\$23,471.00
NEW FENCE	\$14,300.00
SUBTOTAL	\$406,351.00
10% CONTINGENCY	\$40,635.10
TOTAL FOR PLAYGROUND	\$446,986.10

Alternate 2 Opinion of Probable Costs:

\$1,306,316.72

Add add'l \$160,000 for sport lighting

Item	Unit	Qty	Unit Price	Total
------	------	-----	------------	-------

IRVING ELEMENTARY SCHOOL - Alternate 2

Removals and Site Preparation

1	Construction Entrance	EA	1	\$1,500.00	\$1,500.00
2	Tree Protection Fencing Supply and Install	LF	307	\$5.00	\$1,535.00
3	Remove Trees 8" caliper or larger and grind stump to depth of 12"	EA	2	\$500.00	\$1,000.00
4	Furnish and install silt fence	LF	455	\$3.50	\$1,592.50
5	Furnish and install inlet protection	EA	9	\$200.00	\$1,800.00
6	Furnish and install 8" high Chain link construction fence	LF	890	\$10.00	\$8,900.00
7	Sawcut Pavement	LF	610	\$10.00	\$6,100.00
8	Remove and haul off existing concrete pavement	SY	196	\$30.00	\$5,880.00
9	Remove and haul off concrete curb & gutter	LF	486	\$30.00	\$14,580.00
10	Remove and haul off existing asphalt pavement	SY	5550	\$30.00	\$166,500.00
11	Remove and haul off timbers	LF	50	\$8.00	\$400.00
12	Remove and haul off existing catch basin	EACH	2	\$750.00	\$1,500.00
13	Remove and haul off existing chain link fence, posts and foundations	LF	785	\$6.00	\$4,710.00
14	Remove and haul off existing benches and pads	EACH	4	\$250.00	\$1,000.00
15	Remove and haul off mulch	SY	1080	\$7.50	\$8,100.00
16	Remove and haul off playground equipment, foundations, playground surface, etc.	LS	1	\$10,000.00	\$10,000.00
Subtotal Removals and Site Preparation					\$235,097.50

Tree Root Pruning

17	Root Prune trees performed by a Certified Arborist/Tree Surgeon as identified on the drawings prior to construction activities	LF	60	\$10.00	\$600.00
----	--	----	----	---------	----------

Site Grading and Excavation

18	Perform all grading and excavation to obtain sub grades for pavement and other grading requirements as shown or noted on the Plans and in accordance with the specifications	LS	1	\$32,000.00	\$32,000.00
19	Remove and haul off subbase	LS	1	\$57,000.00	\$57,000.00
Subtotal Site Grading and Excavation					\$89,000.00

Paving and Surface

20	Furnish and install 5" Thick walk, including site furnishing pads as shown on the drawings. (see eng detail)	SF	3500	\$7.00	\$24,500.00
21	Furnish and install 8" Thick concrete as shown on the drawings. (see eng detail)	SF	710	\$9.00	\$6,390.00
22	Furnish and install asphalt patch as shown on the drawings. (see eng detail)	SY	1440	\$50.00	\$72,000.00
23	Furnish and install 3" mulch shown on the drawings. (see specifications)	SY	1500	\$9.00	\$13,500.00
24	Furnish and install 6" flush curb as shown on the drawings. (see eng detail)	LF	690	\$15.00	\$10,350.00
25	Furnish and install 6" non flush curb as shown on the drawings. (see eng detail)	LF	305	\$18.00	\$5,490.00
26	Furnish and install impermeable liner as shown on the drawings (see eng detail)	SF	25480	\$1.50	\$38,220.00
27	Furnish and install nailer board (see eng detail)	LF	655	\$8.00	\$5,240.00
28	Furnish and install synthetic turf field (including color markings)	SF	25480	\$5.50	\$140,140.00
29	Furnish, install and fine grade min 6" Vulcan 210 aggregate base course (see eng detail)	SY	2831	\$5.00	\$14,155.00
30	Pavement Markings in parking area	LS	1	\$300.00	\$300.00
Subtotal Paving and Surface					\$330,285.00

Utilities

31	48" Catch Basin, including riser, half trap & trench backfill	EA	4	\$2,400.00	\$9,600.00
32	Furnish and install 18" Reinforced Concrete Pipe, including trench backfill	LF	439	\$24.00	\$10,536.00
33	Furnish and install 8" PVC pipe SDR 26	LF	41	\$15.00	\$615.00
34	Furnish and install ADS Advanedge 1"x12" drains and all associated appertances to connect the Advanedge pipes to the sewer mains (see eng details)	LF	1,210	\$12.00	\$14,520.00
Subtotal Utilities					\$35,271.00

Apparatus Area

35	Apparatus: Furnish and install Kompan <u>STELLA NOVA GXY244</u> as shown and noted on the plan and in play equipment schedule.	EA	1	\$9,770.60	\$9,770.60
35	Apparatus: Furnish and install Kompan <u>PERFORMER DOME CORBB42</u> as shown and noted on the plan and in play equipment schedule.	EA	1	\$46,230.80	\$46,230.80
36	Apparatus: Furnish and install Kompan <u>COROCORD PACKAGE PAK-10/2</u> as shown and noted on the plan and in play equipment schedule	EA	1	\$16,928.80	\$16,928.80

37	Apparatus: Furnish and install Landscape Structures <u>CUSTOM PLAY</u> (CODE:DAK12HRVBC) noted on the plan and in play equipment schedule.	EA	1	\$85,687.00	\$85,687.00
38	Apparatus: Furnish and install Landscape Structures <u>OMNISPIN SPINNER</u> noted on the plan and in play equipment schedule.	EA	1	\$8,330.00	\$8,330.00
39	Apparatus: Furnish and install Landscape Structures <u>SNACK SHACK</u> noted on the plan and in play equipment schedule.	EA	1	\$6,692.00	\$6,692.00
Subtotal Apparatus Area					\$173,639.20

Site Furniture

40	Furnish and install 8' long backed IPE bench (surface mount) as shown on plans.	EA	3	\$1,708.00	\$5,124.00
41	Furnish and install star bench (small)	EA	4	\$1,204.00	\$4,816.00
42	Furnish and install star bench [LARGE]	EA	1	\$1,568.00	\$1,568.00
43	Furnish and install trash enclosure fence	LF	110	\$100.00	\$11,000.00
44	Furnish and install fence around synthetic field	LF	600	\$75.00	\$45,000.00
45	Furnish and install 4' ht. chain link fence gate (double single)	EA	1	\$1,000.00	\$1,000.00
Subtotal Site Furniture					\$68,508.00

Site Landscape Plantings

46	<i>Catropa speciosa</i> , 3' CAL.		3	\$663.08	\$1,989.23
47	<i>Celtis occidentalis</i> , 3' CAL.		3	\$630.00	\$1,890.00
48	<i>Melospiza phyllostroboides</i> , 3' CAL.		2	\$785.40	\$1,570.80
49	<i>Platanus 'Ecklonation'</i> , 3' CAL.		3	\$621.08	\$1,863.23
50	<i>Populus tremuloides</i> , 2' CAL.		6	\$378.00	\$2,268.00
51	<i>Crataegus cuneata</i> var. <i>inermis</i> , 3' Cal.		3	\$400.58	\$1,201.73
52	<i>Amelanchier x grandiflora 'Aulum Brilliance'</i> , 48" ht.		3	\$157.50	\$472.50
53	<i>Aranca melanocarpa 'Jacquie Beauty'</i> , 36" ht.		40	\$68.78	\$2,751.00
54	<i>Cornus racemosa</i> , 48" ht.		7	\$51.98	\$363.83
55	<i>Corylus americana</i> , 42" ht.		1	\$66.68	\$66.68
56	<i>Hammamelis virginica</i> , 48" ht.		1	\$182.70	\$182.70
57	<i>Ilex virginica 'Little Henry'</i> , #3 cont		20	\$47.78	\$955.50
58	<i>Viburnum 'Blue Muffin'</i> , 36" ht.		3	\$57.23	\$171.68
59	<i>Allium 'Summer Beauty'</i> , quart		105	\$8.13	\$853.13
60	<i>Bouteloua curtipendula</i> , quart		210	\$8.75	\$1,837.50
61	<i>Echinacea pallida</i> , quart		105	\$8.75	\$918.75
62	<i>Panicum virgatum 'Northwind'</i> , quart		105	\$8.75	\$918.75
63	<i>Panicum virgatum 'Shenandoah'</i> , quart		315	\$8.75	\$2,756.25
64	<i>Schizachyrium scoparium</i> , quart		105	\$8.75	\$918.75
65	<i>Solidago rugosa 'Fireworks'</i> , quart		105	\$8.75	\$918.75
Subtotal Site Landscape Plantings					\$24,868.73

TOTAL FOR ALTERNATE 2					\$957,269.43
10% CONTINGENCY					\$95,726.94
GRAND TOTAL FOR ALTERNATE 2- IRVING ELEMENTARY SCHOOL					\$1,052,996.37

PLAYGROUND RUBBER SURFACING

Furnish and install concrete base to receive synthetic rubber surfacing at all playground surfaces	SF	6,500	\$7.00	\$45,500.00
Furnish and install synthetic rubber surfacing at all playground surfaces	SF	6,500	\$14.00	\$91,000.00
TOTAL				\$136,500.00
10% CONTINGENCY				\$13,650.00
GRAND TOTAL FOR RUBBER SURFACING - IRVING ELEMENTARY SCHOOL				\$150,150.00

GRAND TOTAL FOR ALTERNATE 2 INCLUDING RUBBER SURFACING- IRVING ELEMENTARY SCHOOL					\$1,203,146.37
--	--	--	--	--	----------------

All items not listed shall be considered incidental to the contract

Preliminary Review

Oak Park Elementary Schools-District 97
Mann, Hatch, Whitter, and Irving Schools - 12/21/2012

- General: Use detail tags along with the callouts.
- General: The term "ADA Accessible" is preferred instead of handicapped.
- General: Is playground equipment detailed by the manufacturer? If not, provide foundation details for the playground equipment.
- Irving Layout: Base plan would be preferred for enhanced child safety. The alternate plan places the playground near three major streets.
- Erosion Plans: Limits line in legend does not match what is shown on the plan.
- Demo. Plans: Dimension pavement removal limits for contractor to quantify and locate work, especially the sawcuts.
- Demo. Plans: Differentiate the types of pavement removal (asphalt, concrete, etc.)
- Dim. Plans: Note #2-Ribbon curb does not have a gutter. Is this note needed?
- Utility Plans: Provide a legend for all utility plan sheets.
- C-201H: Label the boxes to the west of the project area. Pavement striping to remain?
- C-201H: Refer to tree protection details for trees to remain adjacent to demolition activities.
- C-201H: Confirm if Note #6 applies to this project.
- C-201H: Confirm if Note #17 applies to this project.
- C-201H: Call out timbers to be salvaged if they are being reused.
- C-202H: More dimensions are required to layout the proposed features.
- C-202H: Is Note #3 pertinent to this project? No building/parking work is proposed.
- C-203H: Proposed contours conflict with callouts indicating flush curb on the west side of the project.
- C-203H: Provide a spot elevation for the center of the central tree planter.
- C-203H: Confirm that proposed grades will accommodate the proposed play equipment.
- C-203H: Rubber slopes are steep on the East side of the playground. Will ADA access be provided to the area at the bottom of the slides?
- C-301I: Is fence adjacent to the south parking lot to remain? Consider adding call out for fence to be protected.
- C-301I: Identify locations for tree protection.
- C-302I: Show control joints for concrete sidewalk.
- C-302I: Remove 40 ft contour from the plan.
- C-302I: Show striping for the new artificial turf field.
- C-302I: Will the tree on the southwest side of the playground survive the adjacent curb construction?
- C-303I: Provide estimated elevations for the resurfaced parking lot.
- C-303I: Show drainage arrows to indicate runoff to flow toward the existing drainage structure.
- C-303I: How will pavement be removed so close to the existing fence without damaging the fence or foundations?
- C-303I: Spot grades make grading plan appear busy. Consider increasing spacing or removing some grades where slopes are constant.
- C-304I: How does the existing catchbasin in the parking lot drain to the sewer main? This line will likely also need to be rodded and cleaned.
- C-304I: What is the pipe size between the existing CB and MH west of the site? CB outlet shows 6" and MH inlet shows 8".
- C-304I: Why is RCP being used around the perimeter of the field? Is RCP necessary?

Preliminary Review

- C-304I: Show the extents of the sewer line under the field. Can the field drain to this line instead of constructing a new sewer connection?
- C-304I: Details show both 2' and 3' diameter CBs. Specify size for each proposed CB.
- C-304I: What is the Cleanout tag east of the building pointing to?
- C-401M: Text is cut off by the viewport for "Alternative #5M: Existing Trash Enclosure Removal."
- C-401M: Suggest adding call out clarifying that the eastern manhole is to remain and should be protected.
- C-403M: There are some issues with the pdf printing for this sheet.
- C-403M: Does the existing manhole to the east have an open lid? Adjacent sidewalk appears to drain to this structure.
- C-403M: Suggest showing the street name east of the project.
- C-404M: Is there a half trap downstream of the existing manhole?
- C-404M: What should be done with the existing hole if it can't be used for the new pipe? Specify how hole should be plugged.
- C-404M: Should the new CB be installed so close to the proposed tree? Can this structure be an inlet instead?
- C-404M: Specify the type of PVC pipe to be used.
- C-501W: Are existing benches to be removed? If so, add callouts for scope.
- C-502W: If the pavement west of the building is asphalt, why would an expansion joint be needed?
- C-604: Barrier curb detail indicates adjacent track surface. Where is this shown?
- C-604: Barrier curb detail indicates a 1-3/4" pile height while the section calls for 2"+.
- C-604-Section: Confirm if MWRDGC will permit the proposed underdrain system.
- C-604-Section: Are the ADS Advanedge drains perforated? How do they drain?
- C-604-Section: Indicate on plan where the section is cut.
- C-604-Section: "This configuration..." note for pipe under pavement does not point to anything. Shift up?
- C-604-Section: Are the 2-45° bends required? Is there another way to connect the pipes that encourages better flow?
- C-604-Section: Is 6" of stone cover sufficient to protect the ADS drains from crushing during construction and by maintenance equipment?
- C-604-Section: Should subgrade beneath the turf field be compacted? Specify compaction criteria.
- C-604-Section: Surface slopes on the section do not match the grading design shown on the grading plan.

Memo

TO: Therese M. O'Neill
Assistant Superintendent for Finance & Operations

RE: Evaluation and recommendations for playground contractors

FROM: Josephine Bellalta, Altamanu Inc.

DATE: February 14, 2013

Dear Therese,

On February 14, 2013 we reviewed and evaluated the bids received from contractors for the District 97 Playground Improvements Project for 2013. The base bids for the four schools (combined) are as follows:

Clauss Brothers	\$1,946,644.72
Georges Landscaping	\$1,980,660.00
Team REIL	\$2,243,410.38

Altamanu Inc has experience with all three of these contractors, and they have all recently completed work in Oak Park for the Park District of Oak Park. Georges Landscaping was the contractor for District 97's 2012 playground renovation project. Based on our experiences we feel confident that the lowest bidder, **Clauss Brothers**, has adequate experience, appropriate work forces to complete the project, the financial ability to purchase large amounts of play equipment and the ability to schedule and complete the project on-time.

There are a number of alternates that were also included in the bids and Clauss Brothers prices for these items are as follows:

#1H (Hatch Sidewalk Replacement)	\$1,508.55 (not recommended)
#2H (Hatch outdoor classroom)	\$18,691.10
#3IV (Irving Alternate Plan 1)	\$676,348.10
#4IV (Irving Alternate Plan 2)	\$858,688.70
#5M (Mann New Entry)	\$17,815.25
#6M (Mann relocate trash enclosure)	\$17,486.20
#7W (Whittier Additional play equipment)	\$27,155.05
#8W (Whittier Water Line/Utility Work)	\$9,342.00

After analyzing the drawings with our project engineer (Manhard Consulting) further we do not recommend proceeding with alternate #1H (Hatch Sidewalk Replacement) as we believe the work required to fix the ponding problem on the sidewalk is far more extensive than what we can do as part of this project, and replacing this section of walk will have little impact on the ponding. The pricing for the remaining alternates is consistent with our opinion of probable construction costs, and we will defer to District 97's decisions on which alternates to include in the contract.

There are a few inconsistencies within the bids, and we have identified some areas where we think there could be additional charges (extras) from the contractor. Below is a list.

Items mistakenly left off of the bid tab by design team (

New sod at hatch	\$600.00
6' Chain Link gate for Irving Alternate 2	\$1,000.00
Reinstall bike racks at Whittier (base plan)	\$400.00
Sod for Mann (base plan)	\$500.00
Sod for Mann Alternate #1	\$400.00
Traffic control for Irving Alternate 2	\$4,500.00

Items with unknown quantities that cannot be determined at this point:

Unknown quantity for patching Irving base and alt plan #1	\$18,000-\$26,000 (approx.)
Potential additional pipe for Whittier alternate #8W	\$1,000-\$2,000 (approx.)

These items have variables that are not yet determined, and pricing may change during construction depending on existing conditions.

For budgeting purposes, we recommend that District 97 continue to assume a 10% contingency in addition to the bid numbers to ensure funds for any unforeseen items encountered during construction. Below is a summary of each school, with a 10% contingency added to the bid prices:

<u>School/Items</u>	<u>Base Bid Only</u>	<u>With Alternates</u>
<u>Hatch</u>		
Hatch Base Bid from contractor	\$387,728.05	\$387,728.05
Hatch Alt. #2H from contractor		\$18,691.00
Anticipated extra for sodding at Hatch	\$600.00	\$600.00
Total	\$388,328.05	\$407,019.05
10% contingency	\$38,832.81	\$40,701.91
Grand Total for Hatch	\$427,160.86	\$447,720.96
<u>Irving Base Bid</u>		
Irving Base Bid from contractor	\$730,084.72	
Field Turf (purchased by D97)	\$117,667.76	
Anticipated extra for unknown qty. patch	\$18,000.00	
Total	\$865,752.48	
10% contingency	\$86,575.25	
Grand Total for Irving Base Bid	\$952,327.73	

<u>School/Items</u>	<u>Base Bid Only</u>	<u>With Alternates</u>
<u>Irving Alternate Plan 1</u>		
Irving Alternate Plan 1 bid from contractor		\$676,348.10
Field Turf (purchased by D97)		\$75,903.56
Anticipated extra for unknown qty. patch		\$18,000.00
Total		\$770,251.66
10% contingency		\$77,025.17
Grand Total for Irving Alt Plan 1		\$847,276.83
<u>Irving Alternate Plan 2</u>		
Irving Alternate Plan 2 bid from contractor		\$858,688.70
Field Turf (purchased by D97)		\$117,667.76
Anticipated extra for traffic control		\$4,500.00
Anticipated extra for 6' Chain Link gate		\$1,000.00
Total		\$981,856.46
10% contingency		\$98,185.65
Grand Total for Irving Alt. Plan 2		\$1,080,042.10
<u>Mann</u>		
Mann Base Bid from contractor	\$408,041.60	\$408,041.60
Alt #5M (new entry) bid from contractor		\$17,815.25
Alt #6M (trash) bid from contractor		\$17,486.20
Anticipated extra for sod for Mann base plan	\$500.00	\$500.00
Anticipated extra for sod Alt #5M	\$400.00	\$400.00
Total	\$408,941.60	\$444,243.05
10% contingency	\$40,894.16	\$44,424.31
Grand Total for Mann	\$449,835.76	\$488,667.36
<u>Whittier</u>		
Whittier Base Bid from contractor	\$420,970.35	\$420,970.35
Alt #7W (Oodle Swing)bid from contractor		\$27,155.05
Alt #8W (Water Line) bid from contractor		\$9,342.00
Anticipated extra for bike rack reinstall	\$400.00	\$400.00
Anticipated extra for unknown qty. Alt #8W		\$2,000.00
Total	\$421,370.35	\$459,867.40
10% contingency	\$42,137.04	\$45,986.74
Grand Total for Irving Whittier	\$463,507.39	\$505,854.14

Please feel free to contact me with any questions.
Thank you,

Josephine Bellalta
President, Altamanu Inc.

PRICING FROM CLAUSS BROTHERS, INC. BID

School District 97 Playground Improvements
2.15.2013

Item	Unit	Qty	Unit Price	Total
------	------	-----	------------	-------

IRVING ELEMENTARY SCHOOL - Alternate Plan 1 (Field Only)

Removals and Site Preparation

Site Preparation, mobilization, construction fencing, construction entrance, bonding costs	LS	1	\$9,757.00	\$9,757.00
Furnish, install and maintain traffic control measures	LS	1	\$1,000.00	\$1,000.00
Furnish, install and maintain erosion control measures	LF	270	\$5.00	\$1,350.00
Sawcut existing pavement in locations indicated	LF	285	\$2.20	\$627.00
Remove and haul off concrete curb & gutter	LF	50	\$5.30	\$265.00
Remove and haul off existing asphalt pavement and sub base	SY	2248	\$6.50	\$14,612.00
Remove and haul off existing chain link fence, posts and foundations	LF	330	\$5.25	\$1,732.50
Subtotal Removals and Site Preparation				\$29,343.50

Site Grading and Excavation

Perform all grading and excavation to obtain sub grades for pavement and other grading requirements as shown or noted on the Plans and in accordance with the specifications	LS	1	\$5,501.10	\$5,501.10
Subtotal Site Grading and Excavation				\$5,501.10

Paving and Surface

Furnish and install asphalt patching	SY	173	\$46.00	\$7,958.00
Furnish and install concrete curbs	LF	530	\$21.60	\$11,448.00
Furnish and install impermeable liner for athletic field area	SF	17300	\$2.00	\$34,600.00
Furnish and install removable panel for manhole under athletic field area	EA	1	\$600.00	\$600.00
Furnish and install nailer board for athletic field area	LF	530	\$4.50	\$2,385.00
Furnish, install and fine grade min 6" Vulcan 210 aggregate base course	SY	1795	\$13.50	\$24,232.50
Subtotal Paving and Surface				\$81,223.50

Utilities

Furnish and install 48" Catch Basin, including riser, half trap	EA	4	\$1,900.00	\$7,600.00
Furnish and install 18" Reinforced Concrete Pipe	LF	350	\$55.50	\$19,425.00
Furnish and install 8" PVC pipe SDR 26	LF	39	\$385.00	\$15,015.00
Furnish and install ADS Advancedge 1"x12" drains and all associated appertances to connect the Advancedge pipes to the sewer mains	LF	766	\$5.25	\$4,021.50
Subtotal Utilities				\$46,061.50

Turf Field

Field Turf artificial turf field furnished and installed by Field Turf including field markings	LS	1	\$75,903.56	\$75,903.56
Subtotal Turf Field				\$75,903.56

Site Furniture

Furnish and install 6' ht black vinyl coated chain link fence w/ 6 ga fabric	LF	275	\$51.00	\$14,025.00
Subtotal Site Furniture				\$14,025.00

TOTAL FOR ARTIFICIAL TURF FIELD IRVING ELEMENTARY SCHOOL - ALT PLAN 1				\$252,058.16
10% Contingency				\$25,205.82
GRAND TOTAL FOR ARTIFICIAL TURF FIELD IRVING ELEMENTARY SCHOOL - ALT PLAN 1				\$277,263.98

PRICING FROM CLAUSS BROTHERS, INC. BID

**School District 97 Playground Improvements
2.15.2013**

Item	Unit	Qty	Unit Price	Total
------	------	-----	------------	-------

IRVING ELEMENTARY SCHOOL - Alternate Plan 2 (Field Only)

Removals and Site Preparation

Site Preparation, mobilization, construct on fencing, construct on entrance, bonding costs	LS	1	\$17,598.50	\$17,598.50
Furnish, install and maintain traffic control measures	LS	1	\$3,500.00	\$3,500.00
Furnish, install and maintain erosion control measures	LF	355	\$5.00	\$1,775.00
Sawcut existing pavement in locations indicated	LF	406	\$2.20	\$893.20
Remove and haul off existing concrete pavement	SY	14	\$41.00	\$574.00
Remove and haul off concrete curb & gutter	LF	27	\$5.30	\$143.10
Remove and haul off existing asphalt pavement and sub base	SY	2831	\$5.90	\$16,702.90
Remove and haul off existing catch basin	EACH	2	\$950.00	\$1,900.00
Remove and haul off existing chain link fence, posts and foundations	LF	604	\$5.50	\$3,322.00
Subtotal Removals and Site Preparation				\$46,408.70

Site Grading and Excavation

Perform all grading and excavation to obtain sub grades for pavement and other grading requirements as shown or noted on the Plans and in accordance with the specifications	LS	1	\$19,857.50	\$19,857.50
Subtotal Site Grading and Excavation				\$19,857.50

Paving and Surface

Furnish and install aggregate base for concrete areas	CY	2	\$128.00	\$256.00
Furnish and install concrete walk including site furnishing pads	SF	130	\$130.00	\$16,900.00
Furnish and install 8" concrete	SF	437	\$8.25	\$3,605.25
Furnish and install asphalt batching	SY	303	\$32.50	\$9,847.50
Furnish and install concrete curbs	LF	652	\$21.60	\$14,083.20
Furnish and install B6-12 concrete curbs	LF	30	\$21.00	\$630.00
Furnish and install impermeable liner for athletic field area	SF	26600	\$1.65	\$43,890.00
Furnish and install removable panel for manhole under athletic field area	EA	1	\$600.00	\$600.00
Furnish and install nailer board for athletic field area	LF	652	\$4.50	\$2,934.00
Furnish, install and fine grade min 6" Vulcan 210 aggregate base course	SY	2831	\$13.70	\$38,784.70
Provide insurance and \$75,000 bond required to obtain IDOT permit	LS	1	\$1,200.00	\$1,200.00
Subtotal Paving and Surface				\$132,730.65

Utilities

Furnish and install 48" Catch Basin, including riser, half trap	EA	4	\$1,900.00	\$7,600.00
Furnish and install 18" Reinforced Concrete Pipe	LF	430	\$65.00	\$27,950.00
Furnish and install 8" PVC pipe SDR 26	LF	41	\$320.00	\$13,120.00
Furnish and install ADS Advanedge 1"x12" drains and all associated appertances to connect the Advanedge pipes to the sewer mains	LF	1,250	\$5.25	\$6,562.50
Reroute electrical line. Contractor to provide allowance for this work. Rerouted line to match existing.	LS	1	\$6,000.00	\$6,000.00
Subtotal Utilities				\$61,232.50

Turf Field

Field Turf artificial turf field furnished and installed by Field Turf including field markings	LS	1	\$117,667.76	\$117,667.76
Subtotal Turf Field				\$117,667.76

Fencing

PRICING FROM CLAUSS BROTHERS, INC. BID

School District 97 Playground Improvements
2.15.2013

Item	Unit	Qty	Unit Price	Total
Furnish and install 6' ht black vinyl coated chain link fence w/ 6 ga fabric and privacy slats (Frasn Enclosure)	LF	32	\$125.00	\$4,000.00
Furnish and install chain link fence gate with drop rod assembly (Frasn Enclosure)	EA	1	\$1,026.00	\$1,026.00
Furnish and install 6' ht black vinyl coated chain link fence w/ 6 ga fabric	LF	337	\$50.00	\$16,850.00
Subtotal Fencing				\$21,876.00

TOTAL FOR ARTIFICIAL TURF FIELD IRVING ELEMENTARY SCHOOL - ALT PLAN 2				\$399,773.11
10% Contingency				\$39,977.31
GRAND TOTAL FOR ARTIFICIAL TURF FIELD IRVING ELEMENTARY SCHOOL - ALT PLAN 2				\$439,750.42

Category of Work	Estimate	Estimate	Estimate	Estimates - Irving		
	Hatch School	Mann	Whittier	Base	Alternate #1	Alternate #2
Removals & Site Preparation	\$35,407.50	\$35,905.00	\$43,220.50	\$180,022.00	\$148,092.50	\$235,097.50
Site Grading & Excavation	\$6,600.00	\$4,400.00	\$7,600.00	\$71,500.00	\$63,000.00	\$89,000.00
Paving & Surface	\$13,152.50	\$14,555.50	\$21,874.50	\$319,219.00	\$241,614.00	\$330,285.00
Utilities & Drainage	\$0.00	\$3,300.00	\$0.00	\$37,353.00	\$27,255.00	\$35,271.00
Playground Equipment	\$149,671.00	\$179,702.04	\$149,605.68	\$173,639.20	\$173,639.20	\$173,639.20
Site Furniture & Fencing	\$15,000.00	\$11,520.00	\$5,950.00	\$45,233.00	\$45,233.00	\$68,508.00
Site Landscape & Plantings	\$10,953.60	\$10,425.91	\$4,435.00	\$7,168.80	\$10,454.25	\$25,468.73
Sub-Total - Base Bid	\$230,784.60	\$259,808.45	\$232,685.68	\$834,135.00	\$709,287.95	\$957,269.43
10% Contingency	\$23,078.46	\$25,980.85	\$23,268.57	\$83,413.50	\$70,928.80	\$95,726.94
Playground Rubber Surfacing	\$132,678.00	\$129,381.00	\$164,850.00	\$143,220.00	\$143,220.00	\$150,150.00
Grand Total - Estimates	\$386,541.06	\$415,170.30	\$420,804.25	\$1,060,768.50	\$923,436.75	\$1,203,146.37
Actual Bids Received						
Clauss Brothers	\$387,728.05	\$408,041.60	\$420,790.35	\$730,084.72	\$676,348.10	\$858,688.70
George's Landscaping	\$393,075.00	\$430,895.00	\$433,480.00	\$723,210.00	\$677,200.00	\$862,365.00
Team REIL	\$379,496.39	\$473,952.35	\$465,635.82	\$924,325.82	\$836,327.38	\$1,057,121.51
Field Turf Purchased directly by District 97		U10 Field	\$117,667			
		U8 Field	\$100,000			

