



FACILITIES UPDATE SPRING 2024



SCHOOL BOARD WORK SESSION MAY 21, 2024





AGENDA

- Countryside Elementary Addition
- Playground Updates - Countryside & Highlands
- Long-Term Facilities Maintenance (LTFM) Overview
 - Funding Overview
 - Edina High School Mechanical Upgrades
 - Other Major LTFM Projects - 2024 to 2027



COUNTRYSIDE ELEMENTARY

- Funded by lease levy authority (\$212 per APU)
- Addition of 24,000 square feet:
 - 6 classrooms
 - 1 special education classroom
 - 1 flexible space
 - 1 multi-purpose room
- Project substantially completed







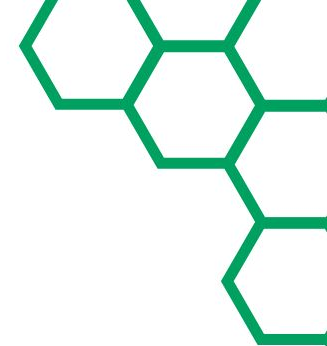






PLAYGROUND UPDATES

- Countryside Elementary and Highlands Elementary
- Communication Boards at all Sites











LONG-TERM FACILITIES MAINTENANCE

- Edina qualifies for “old law” or “alternative facilities” revenue
 - >1.5M gross square feet and average building age of 35 years or older
 - All other districts capped at \$380 per pupil
- Pay-As-You-Go vs Bonded Debt





LONG-TERM FACILITIES MAINTENANCE

Allowable Uses:

- Deferred and preventative maintenance to prevent further erosion
- Increased accessibility
- Health & Safety projects
- Gender neutral restrooms

Not Allowable:

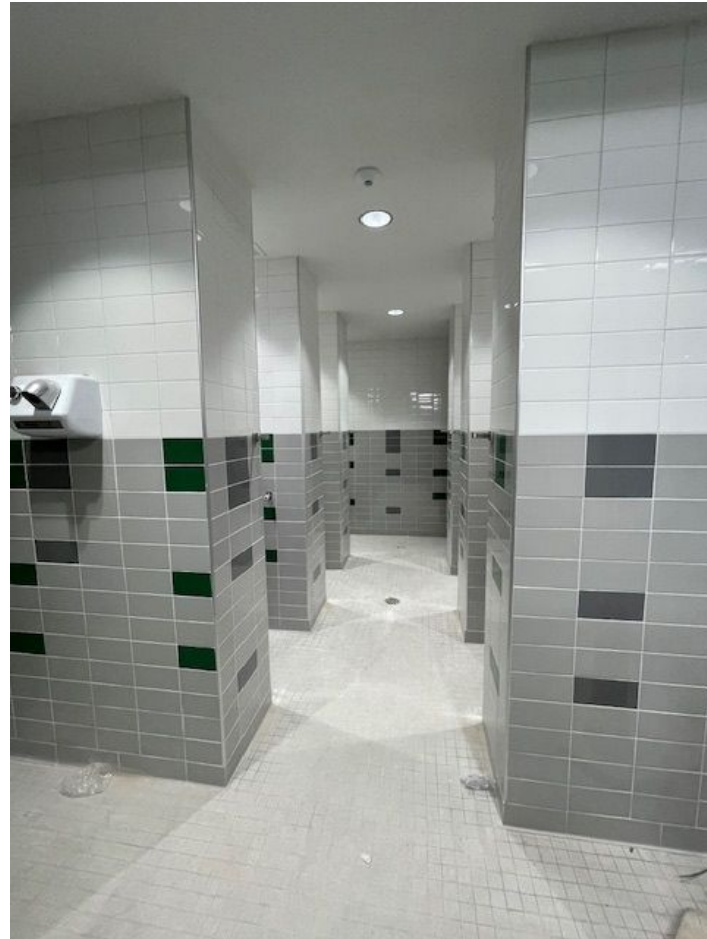
- New construction or remodeling
- Financing arrangement
- Security or violence prevention

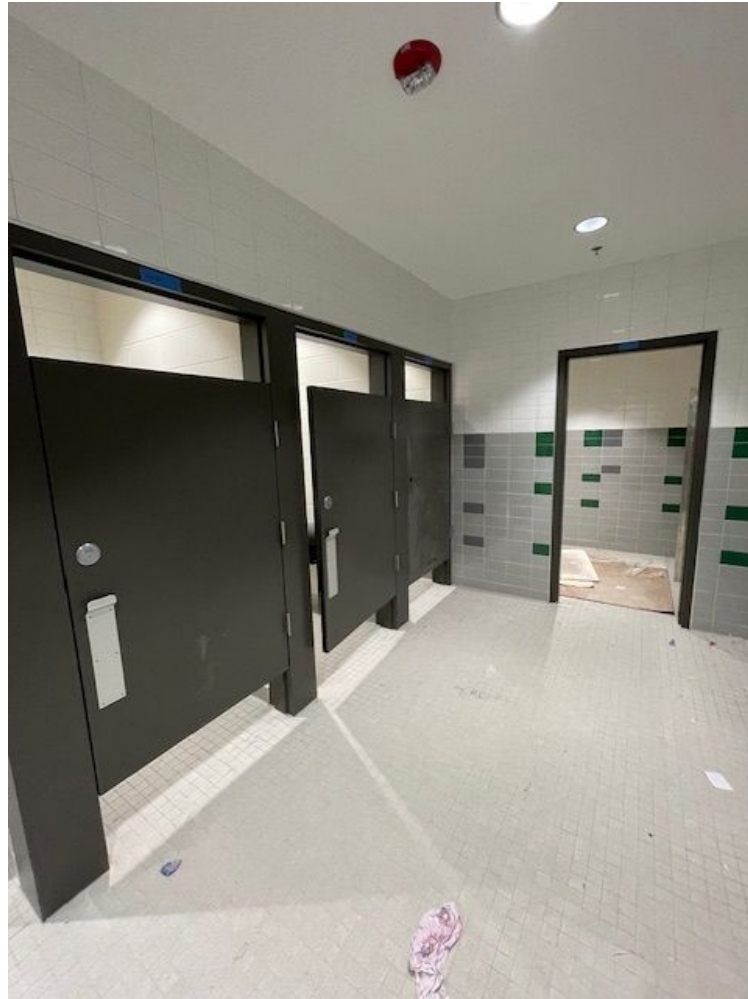


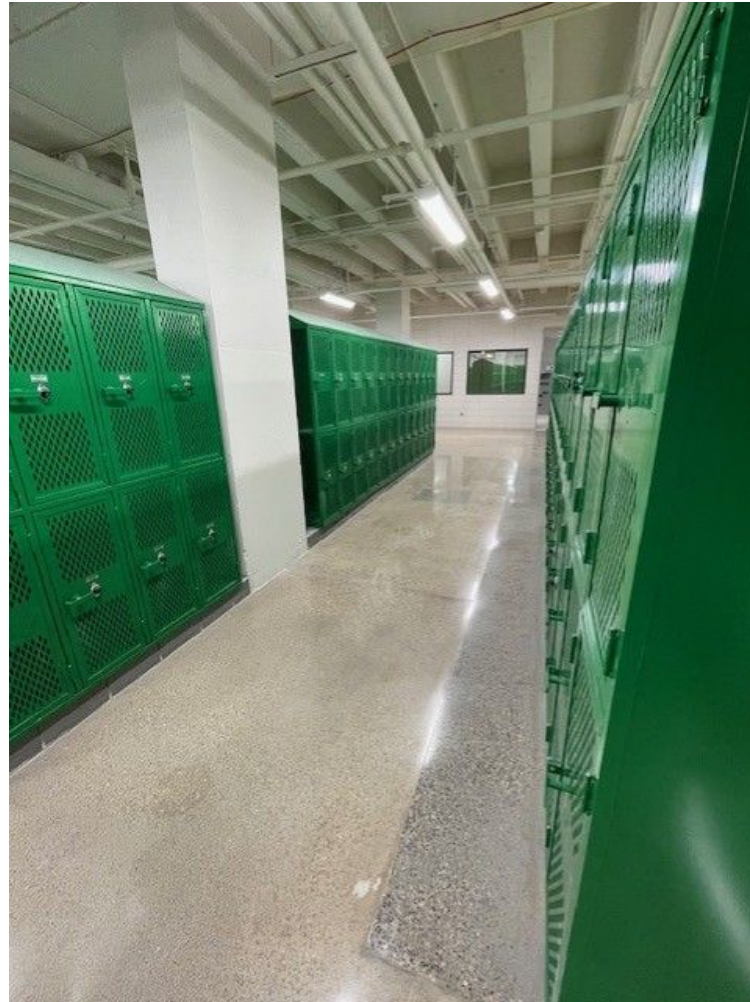
EDINA HIGH SCHOOL

- Mechanical Upgrades Project
 - 2023 through 2026 - Phase I and Phase II
 - Budget of approximately \$35,000,000
 - Mechanical Systems
 - Locker Rooms and Restrooms
 - Fick Auditorium
 - LED Fixtures and Controls
 - Interior Surfaces
 - Classroom cabinetry replacement
 - Classroom lock replacement





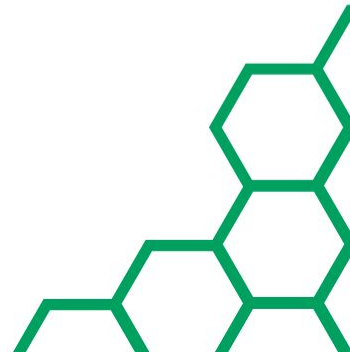






LTFM - 2024

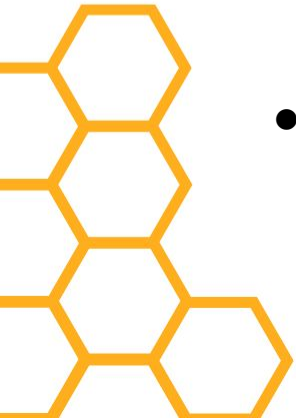
- Valley View Middle School
 - Roof Replacement
- Concord Elementary
 - Brick Work
 - Interior Surfaces - Lockers, etc.
 - Elevator Modernization
- Highlands Elementary
 - Brick Work
 - Gym Floor
- Creek Valley
 - Acoustic Separation - Special Ed. Classroom





LTFM - 2025

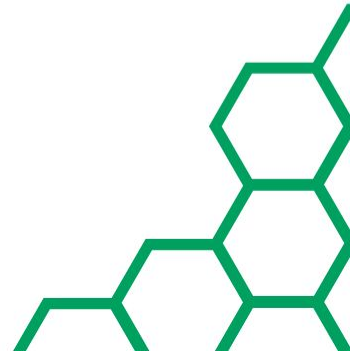
- Cornelia Elementary
 - Restrooms
 - Brickwork
- Highlands Elementary
 - Parking Lot Sealing
- Valley View Middle School
 - LED Lighting and Controls
- Edina Community Center
 - Tennis Courts





LTFM - 2026

- Highlands Elementary
 - Classroom Sinks and Drinking Fountains
 - Restrooms and Plumbing
 - Interior Surfaces
- Valley View Middle School
 - Elevator Upgrade





LTFM - 2027

- Concord Elementary
 - Roof Replacement
- Cornelia Elementary
 - Parking Lot
 - Roof Replacement
 - Interior Surfaces
- Edina Community Center
 - Roof Replacement
 - Elevator Replacement
- South View Middle School
 - Auditorium
 - Lighting, Controls
 - Stage, Curtains





NEXT STEPS

- Long-Term Facilities Maintenance Ten-Year Plan Approval (FY2026 through FY2035)
- Continued Evaluation of Non-LTFM Eligible Facility Wants and Needs

