

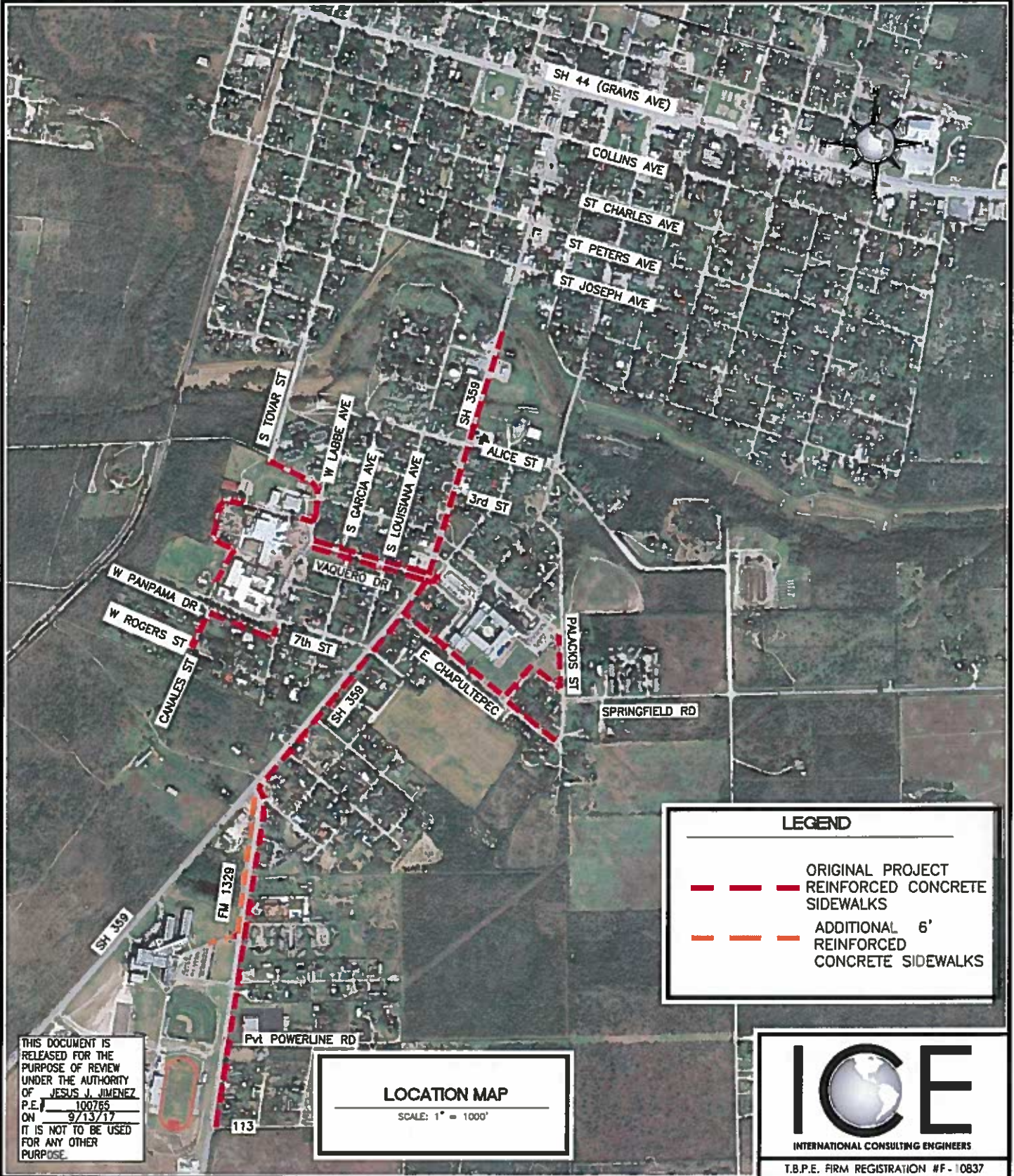
**San Diego ISD - Safe Routes to School Project:
OPINION OF PROBABLE CONSTRUCTION COST FOR ADDITIONAL SIDEWALKS**

FM 1329 Additional Sidewalks					
ITEM	DESCRIPTION	QTY	UNIT	UNIT COST	AMOUNT
502 6001	BARRICADES, SIGNS AND TRAFFIC HANDELING	1	MO	\$ 5,000.00	\$ 5,000.00
531 6003	CONCRETE SIDEWALK	900	SY	\$ 50.00	\$ 45,000.00
531 6004	DRIVEWAY (CONC)	15	SY	\$ 70.00	\$ 1,050.00
531 6005	CURB RAMPS (TYPE 2)	2	EA	\$ 3,000.00	\$ 6,000.00
531 6009	CURB RAMPS (TYPE 6)	1	EA	\$ 2,000.00	\$ 2,000.00
636 6001	ALUMINUM SIGNS S1-1 (30"X30")	6.25	SF	\$ 30.00	\$ 187.50
636 6001	ALUMINUM SIGNS SW16-7P (24"X12")	2	SF	\$ 30.00	\$ 60.00
644	SMALL ROADSIDE SIGN ASSEMBLIES	1	EA	\$ 500.00	\$ 500.00
668 6076	PREFAB PAV MRK TY C (W) (24") (SLD)	60	LF	\$ 20.00	\$ 1,200.00
Subtotal for FM 1329 Additional Sidewalks					\$ 60,997.50
Subtotal					\$ 60,997.50
ENGINEERING / SURVEYING / DESIGN					
TOTAL CONSTRUCTION COST					\$ 60,997.50
PROFESSIONAL SERVICES FEE					
	Environmental and Permitting (2%)				\$ 1,219.95
	Surveying (2%)				\$ 1,219.95
	Planning and Design (7.5%)				\$ 4,574.81
TOTAL ENGINEERING, SURVEYING, AND DESIGN					\$7,014.71
TOTAL ESTIMATED COST FOR FM 1329 SIDEWALKS					\$ 68,012.21

Total Estimated Construction Cost	\$ 60,997.50
Total Estimated Engineering, Surveying and Design	\$7,014.71
Total Estimated Project Cost	\$ 68,012.21

The document is released for the purpose of review under the authority of Jesus J. Jimenez, P.E. 100765, on September 13, 2017, it is not to be used for any other purpose. (TBPE Firm F-10837).

FILE NAME: F:\2015\SDSD\Safe Routes to School\Drawings\Additional Sidewalks\Exhibit\08.29.17 ADDITIONAL SIDEWALKS.dwg LAYOUT NAME: Layout1 PLOTTED: Wednesday, September 13, 2017 - 10:32am USER: ICE



LEGEND

- - - ORIGINAL PROJECT REINFORCED CONCRETE SIDEWALKS
- - - ADDITIONAL 6' REINFORCED CONCRETE SIDEWALKS

ICE
 INTERNATIONAL CONSULTING ENGINEERS
 T.B.P.E. FIRM REGISTRATION #F-10837

THIS DOCUMENT IS RELEASED FOR THE PURPOSE OF REVIEW UNDER THE AUTHORITY OF JESUS J. JIMENEZ
 P.E.# 100765
 ON 9/13/17
 IT IS NOT TO BE USED FOR ANY OTHER PURPOSE.

LOCATION MAP
 SCALE: 1" = 1000'

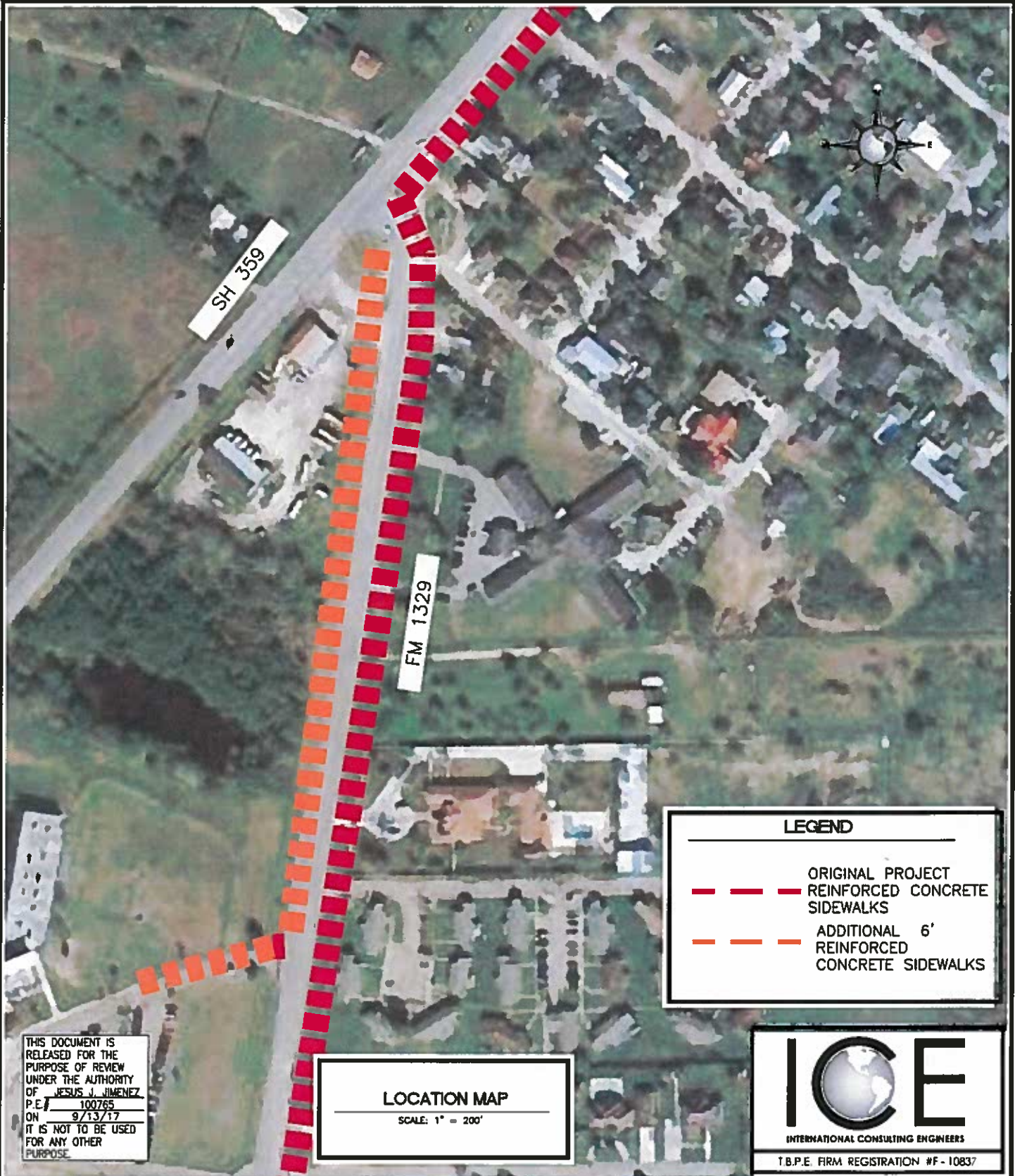
DRAWING NO.
A
 SHEET 1 of 2

**SAN DIEGO INDEPENDENT SCHOOL DISTRICT
 SAFE ROUTES TO SCHOOL SIDEWALK IMPROVEMENTS**



LOCATION MAP



FILE NAME: F:\2015\SDSD\Safe Routes to School Sidewalks\Additional Sidewalks\Exhibit\08.29.17 ADDITIONAL SIDEWALKS.dwg LAYOUT NAME: Layout1 PLOTTED: Wednesday, September 13, 2017 - 10:52am USER: ICE



LEGEND

-  ORIGINAL PROJECT REINFORCED CONCRETE SIDEWALKS
-  ADDITIONAL 6' REINFORCED CONCRETE SIDEWALKS



INTERNATIONAL CONSULTING ENGINEERS
T.B.P.E. FIRM REGISTRATION #F-10837

THIS DOCUMENT IS RELEASED FOR THE PURPOSE OF REVIEW UNDER THE AUTHORITY OF JESUS J. JIMENEZ, P.E. 100765 ON 9/13/17 IT IS NOT TO BE USED FOR ANY OTHER PURPOSE.

LOCATION MAP
SCALE: 1" = 200'

DRAWING NO.
B
SHEET 2 of 2

**SAN DIEGO INDEPENDENT SCHOOL DISTRICT
SAFE ROUTES TO SCHOOL SIDEWALK
IMPROVEMENTS**

**WEST SIDE OF FM 1329
ADDITIONAL SIDEWALKS**

