



# ENROLLMENT PROJECTION 2015-16

Independent School District 877  
Buffalo-Hanover-Montrose

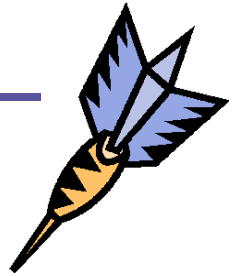
November 24, 2014



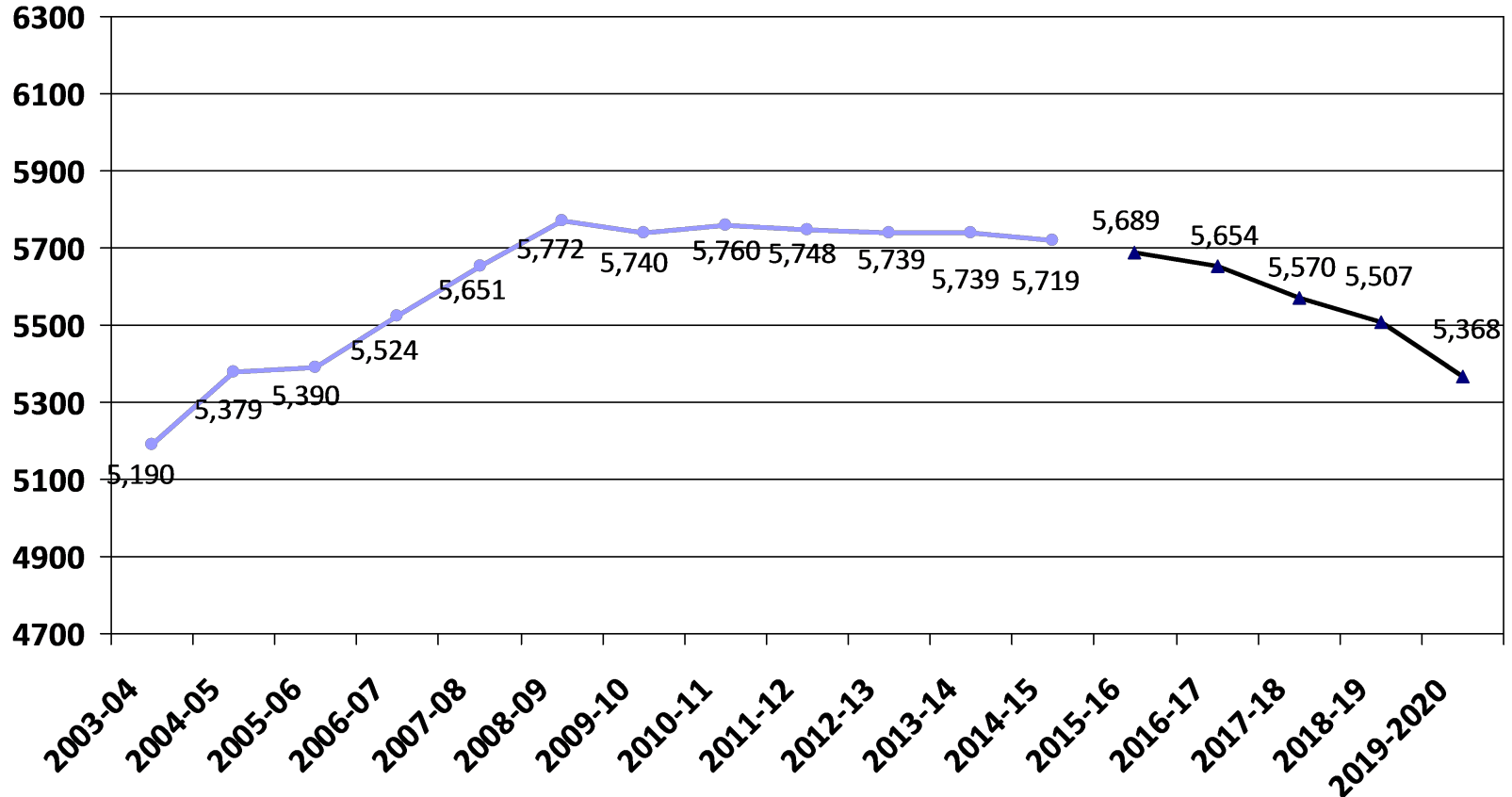
# Enrollment Projection Report

---

- Review of K-12 enrollment as of Oct. 1<sup>st</sup>
- Resident enrollment
- Open enrollment & tuition
- Nonpublic enrollment
- Fall vs. spring enrollment
- Review 2014-15 enrollment projection
- 2015-16 enrollment projection



# Historical and 2015-16 Projected K-12 Enrollment as of Oct. 1<sup>st</sup>



# Review of K-12 Enrollment as of Oct. 1<sup>st</sup>

---

- The school district growth trend came to a halt in the 2009-10 school year but we are slightly ahead of the projection for 2014-15.
- The five-year enrollment is a decline and currently averaging -4.2 students/year.
- Total enrollment decline for the past five years is -21 students or -.37%..

	2010-11	2011-12	2012-13	2013-14	2014-15
<b>K-12 enrollment</b>	5,760	5,734	5,742	5,739	5,719
<b>Change over prior year</b>	20	-26	8	-3	-20
<b>% change</b>	.35%	-.45%	.14%	-.05%	-.35%

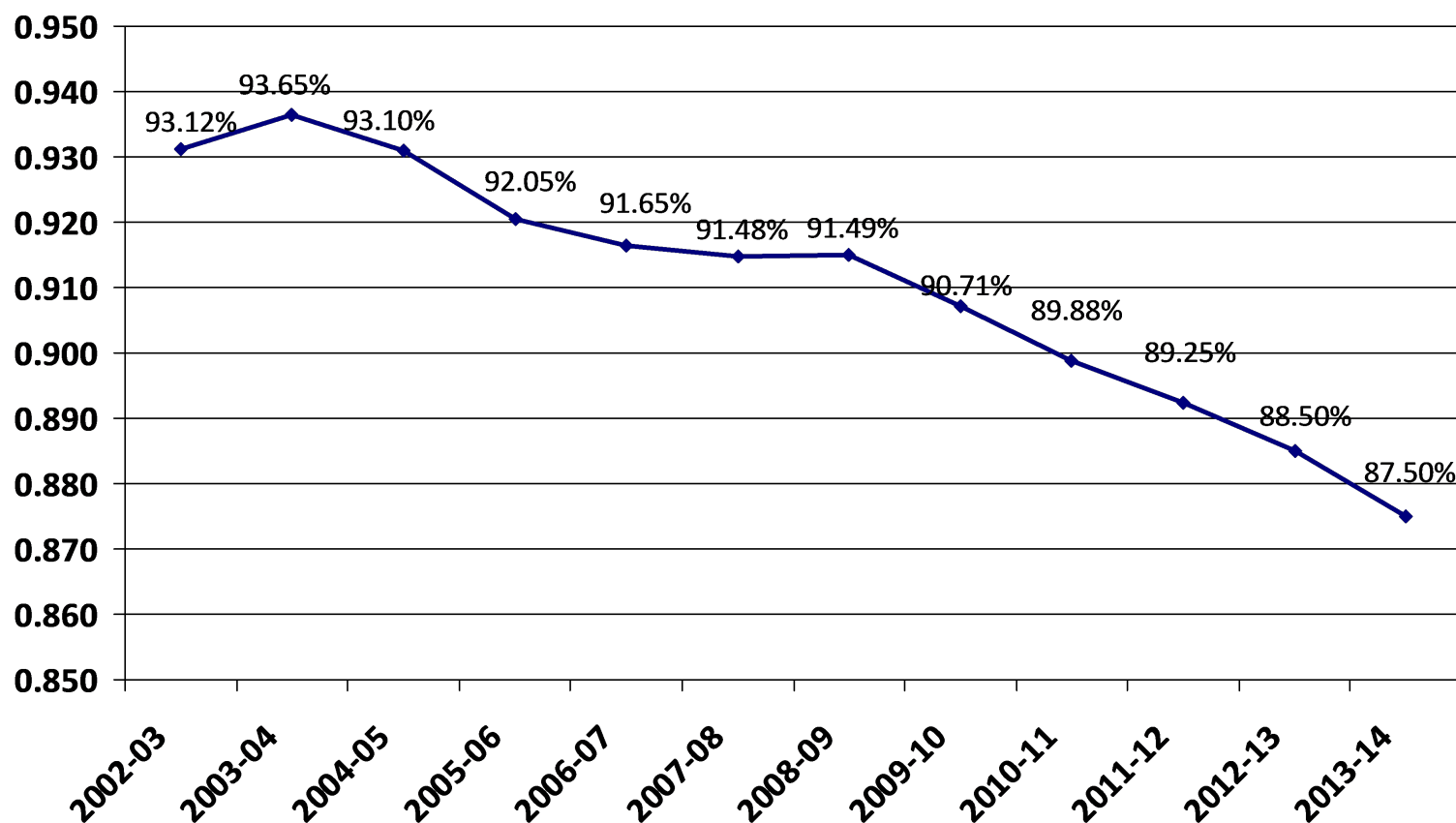
# Total Resident Students

## Enrolled in ISD 877 as of June 30<sup>th</sup>

- BHM's resident population is growing although residents served is declining slightly.

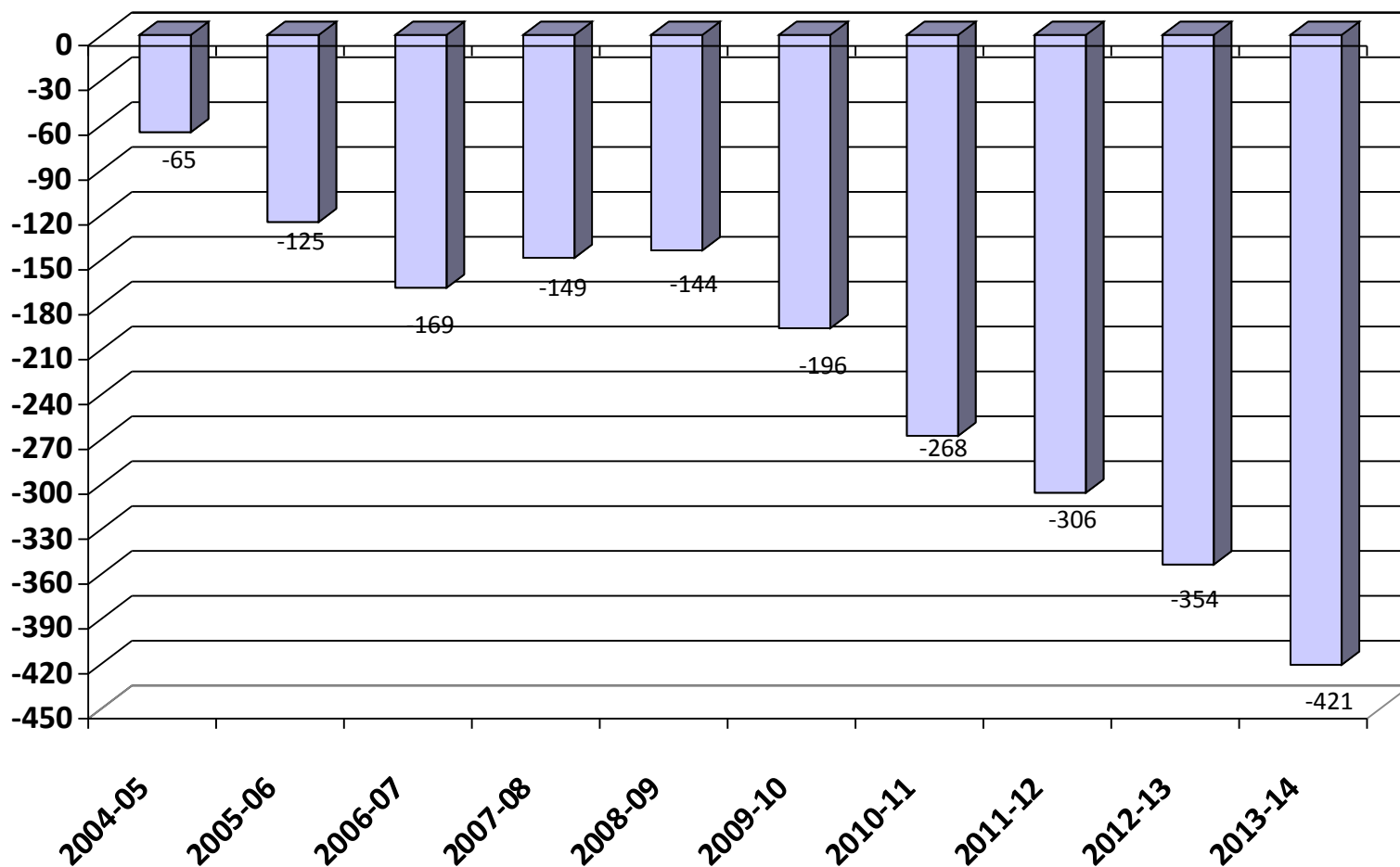
	2009-10	2010-11	2011-12	2012-13	2013-14
<b>Residents served</b>	5,369	5,394	5,358	5,380	5,367
<b>Residents going elsewhere</b>	550	607	645	701	768
<b>Total Residents</b>	5,919	6,001	6,003	6,081	6,135
<b>Change over prior year</b>	22	82	2	78	54
<b>% change</b>	0.4%	1.39%	.03%	1.3%	.89%
<b>% Served vs Total Population</b>	90.7%	89.9%	89.3%	88.5%	87.5%

# Total Resident Students Enrolled in ISD 877 as of June 30<sup>th</sup>



# Open Enrollment & Tuition

## Net Gain/Loss as of June 30<sup>th</sup>



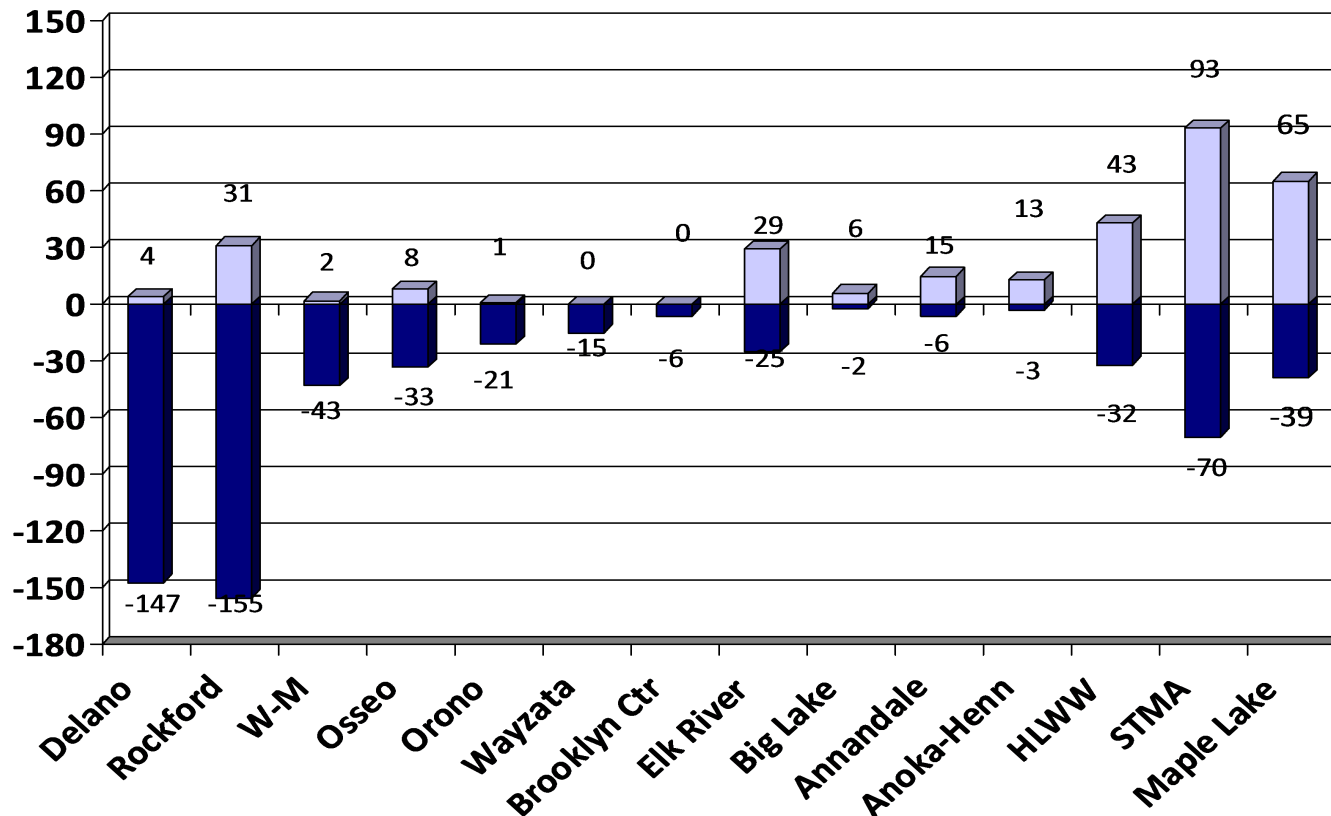


# 2013-14 Open Enrollment & Tuition Gain/Loss by District as of June 30<sup>th</sup>

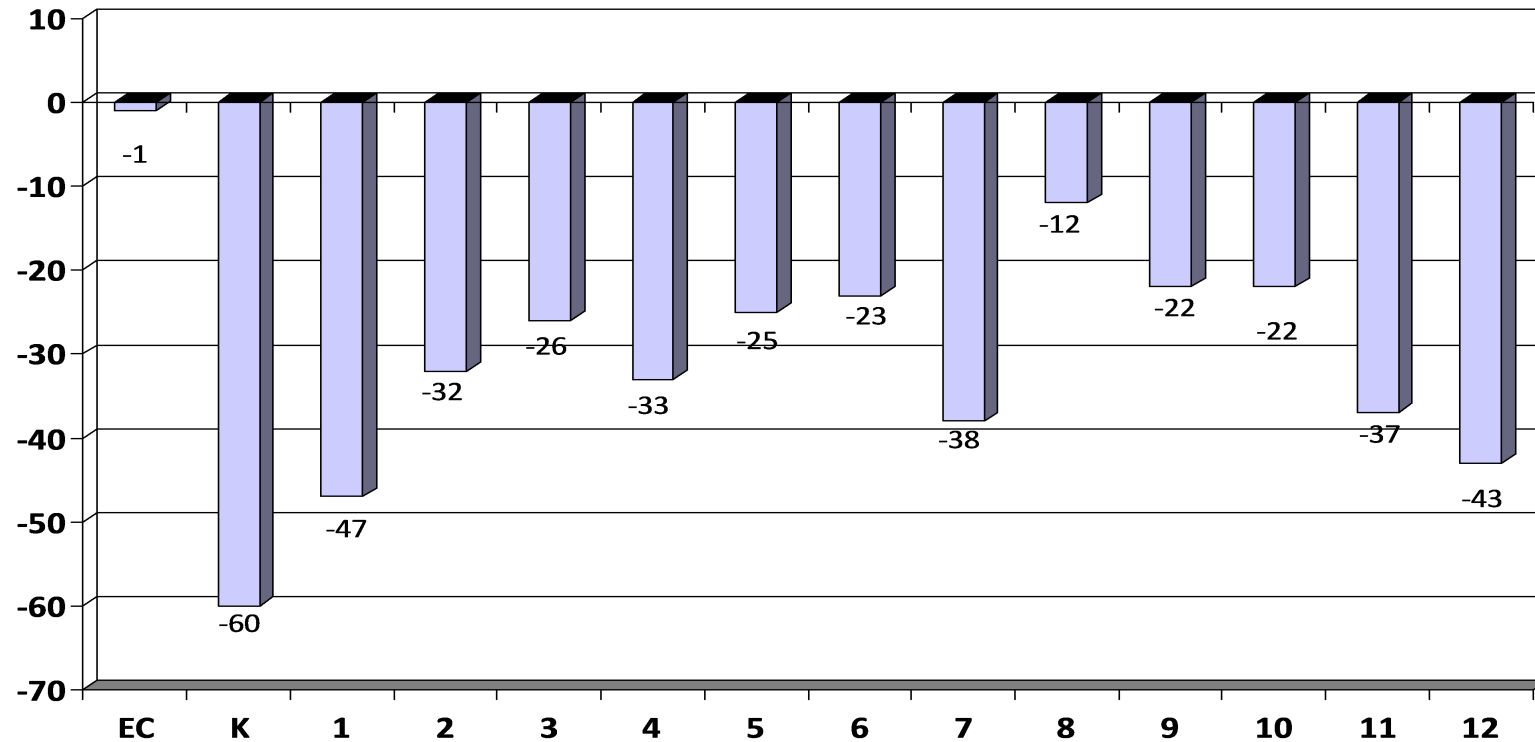
District	In	Out	Net	
Delano	4	-147	-143	
Rockford	31	-155	-124	
Watertown-Mayer	2	-43	-41	
Osseo	8	-33	-25	<u>Other</u>
Orono	1	-21	-20	<u>Targeted Services,</u>
Wayzata	0	-15	-15	<u>Tuition, and Online</u>
Brooklyn Center	0	-6	-6	WTC -52
Elk River	29	-25	4	MAWSECO -11
Big Lake	6	-2	4	Mn Transitions -12
Annandale	15	-6	9	Swan River Charter -11
Anoka-Hennepin	13	-3	10	Houston (online) -16
Howard Lake-Waverly-Winsted	43	-32	11	
St. Michael-Albertville	93	-70	23	
Maple Lake	65	-39	26	



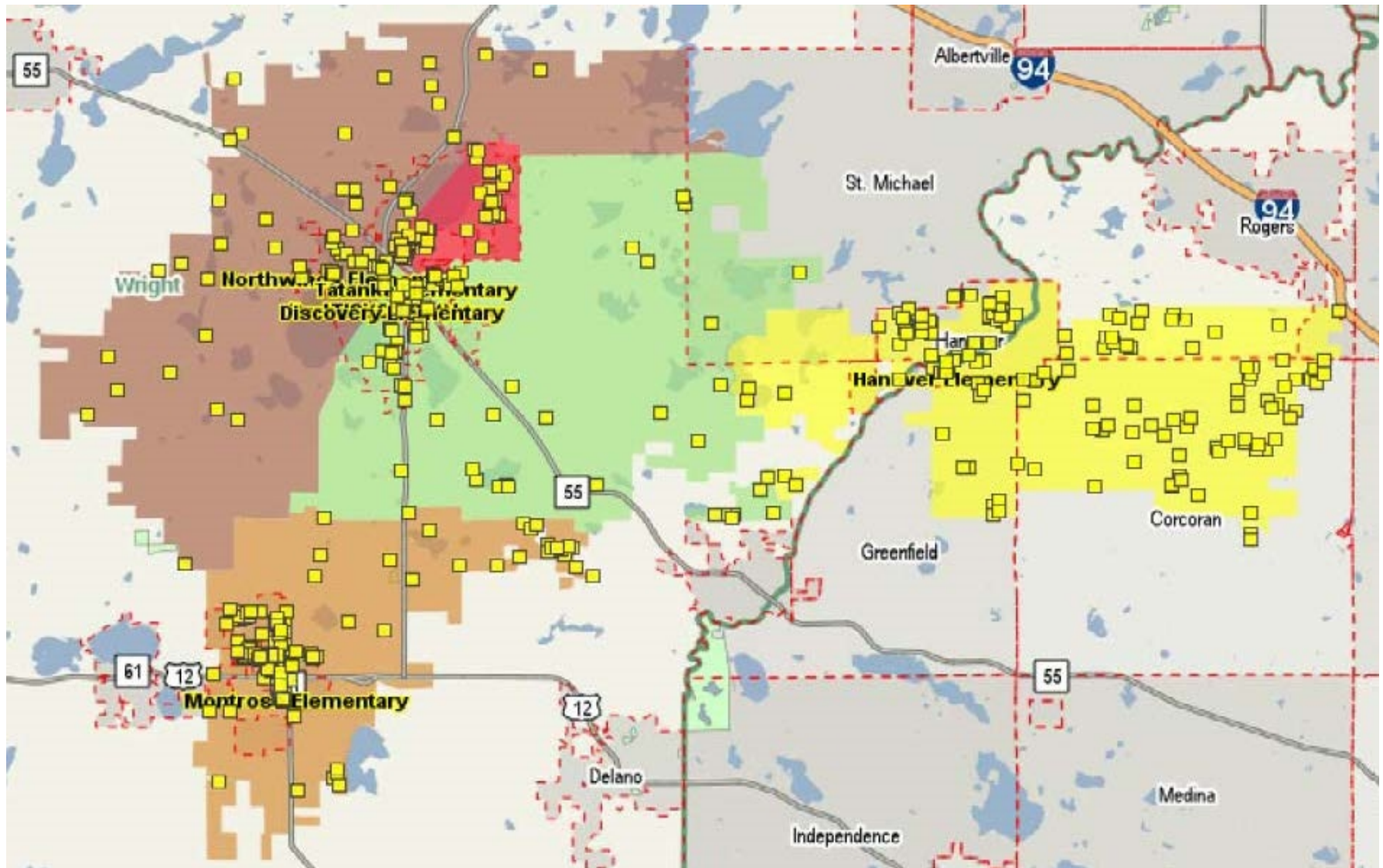
# 2013-14 Open Enrollment & Tuition Gain/Loss by District as of June 30<sup>th</sup>



# 2013-14 Open Enrollment & Tuition by Grade as of June 30<sup>th</sup>



# 2014-15 Resident Open Enrolled to Other Districts

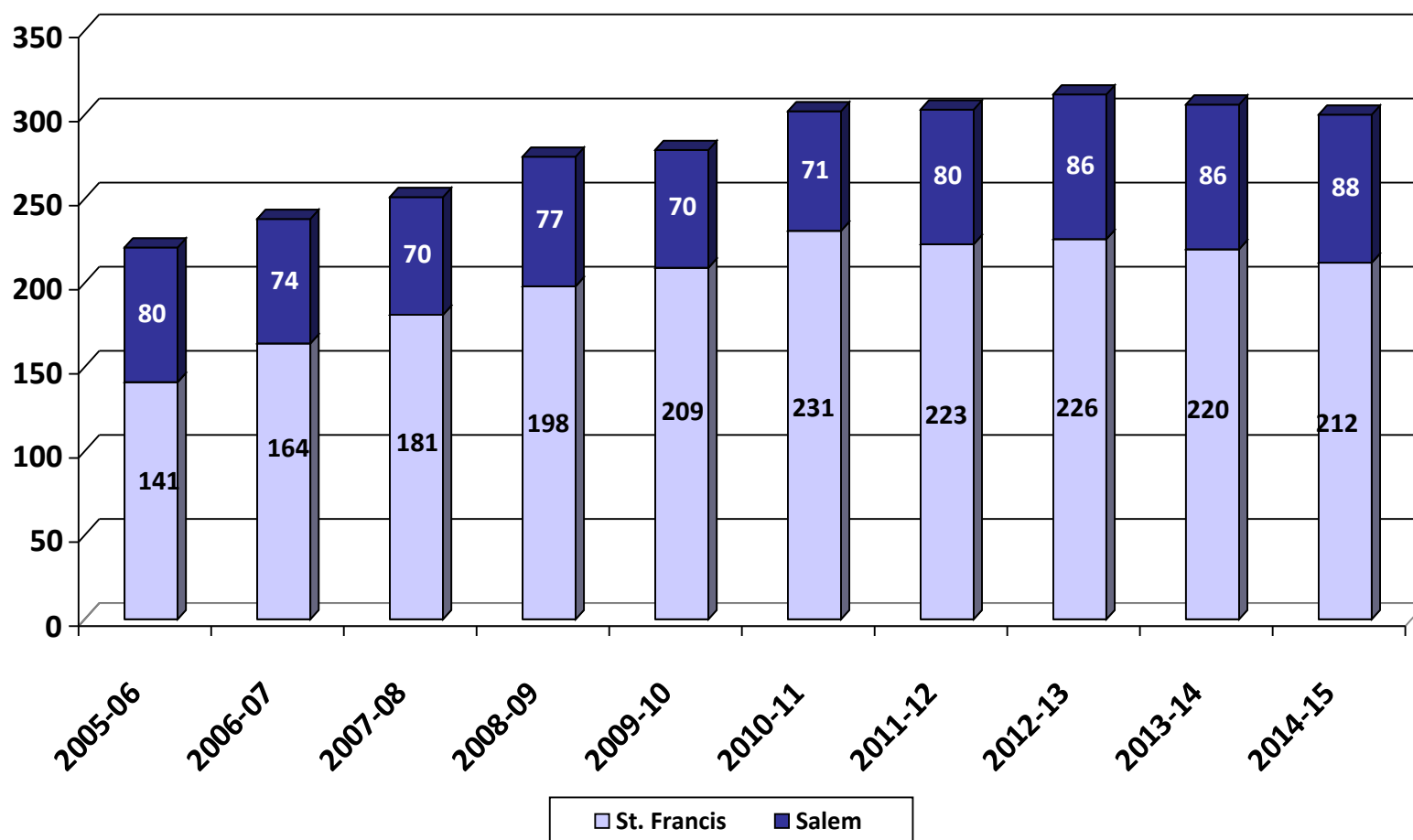


# Nonpublic History

- Two nonpublic schools in the BHM district: St. Francis Xavier in Buffalo and Salem Lutheran in Greenfield.
- Both schools serve students from kindergarten through 8<sup>th</sup> grade.

	05-06	06-07	07-08	08-09	09-10	10-11	11-12	12-13	13-14	14-15
<b>Salem</b>	80	74	70	77	70	71	80	86	86	88
<b>St. Francis</b>	141	164	181	198	209	231	223	226	220	212
<b>Total</b>	<b>221</b>	<b>238</b>	<b>251</b>	<b>275</b>	<b>279</b>	<b>302</b>	<b>303</b>	<b>312</b>	<b>306</b>	<b>300</b>
<b># Change</b>	-1	17	13	24	4	23	1	9	-6	-6
<b>% Change</b>	-0.5%	7.7%	5.5%	9.6%	1.5%	8.2%	.33%	2.97%	-1.92%	-1.96%

# Nonpublic History



# 2013-14 Enrollment

## Fall vs. Spring

---

- Historically, the district's K-12 enrollment decreases from October 1 to June 1.
- Most of the enrollment drops happen in grades 9-12.

	Oct. 1 <sup>st</sup> , 2013	Jun. 1 <sup>st</sup> , 2014	Net
K	387	389	2
Gr. 1-5	2,206	2,199	-7
Gr. 6-8	1,342	1,344	2
Gr. 9-12	1,804	1,677	-127
Total	5,739	5,609	-130

# Historical Enrollment

## Fall vs. Spring

---

- The district had one flat year (2006-07) of enrollment growth. All other years have declined during the year.

	K	Gr. 1-5	Gr. 6-8	Gr. 9-12	Net
<b>2003-04</b>	5	-37	-3	-49	-10
<b>2004-05</b>	-1	0	3	-55	-53
<b>2005-06</b>	4	-1	-9	-56	-62
<b>2006-07</b>	-2	-25	10	-33	0
<b>2007-08</b>	9	3	3	-55	-40
<b>2008-09</b>	0	0	-24	-84	-108
<b>2009-10</b>	-2	14	-17	-58	-63
<b>2010-11</b>	1	-11	-10	-63	-83
<b>2011-12</b>	-10	-11	-14	-94	-129
<b>2012-13</b>	-2	-14	1	-86	-101
<b>2013-14</b>	2	-7	2	-127	-130

# Review of 2014-15 Enrollment Projection

---

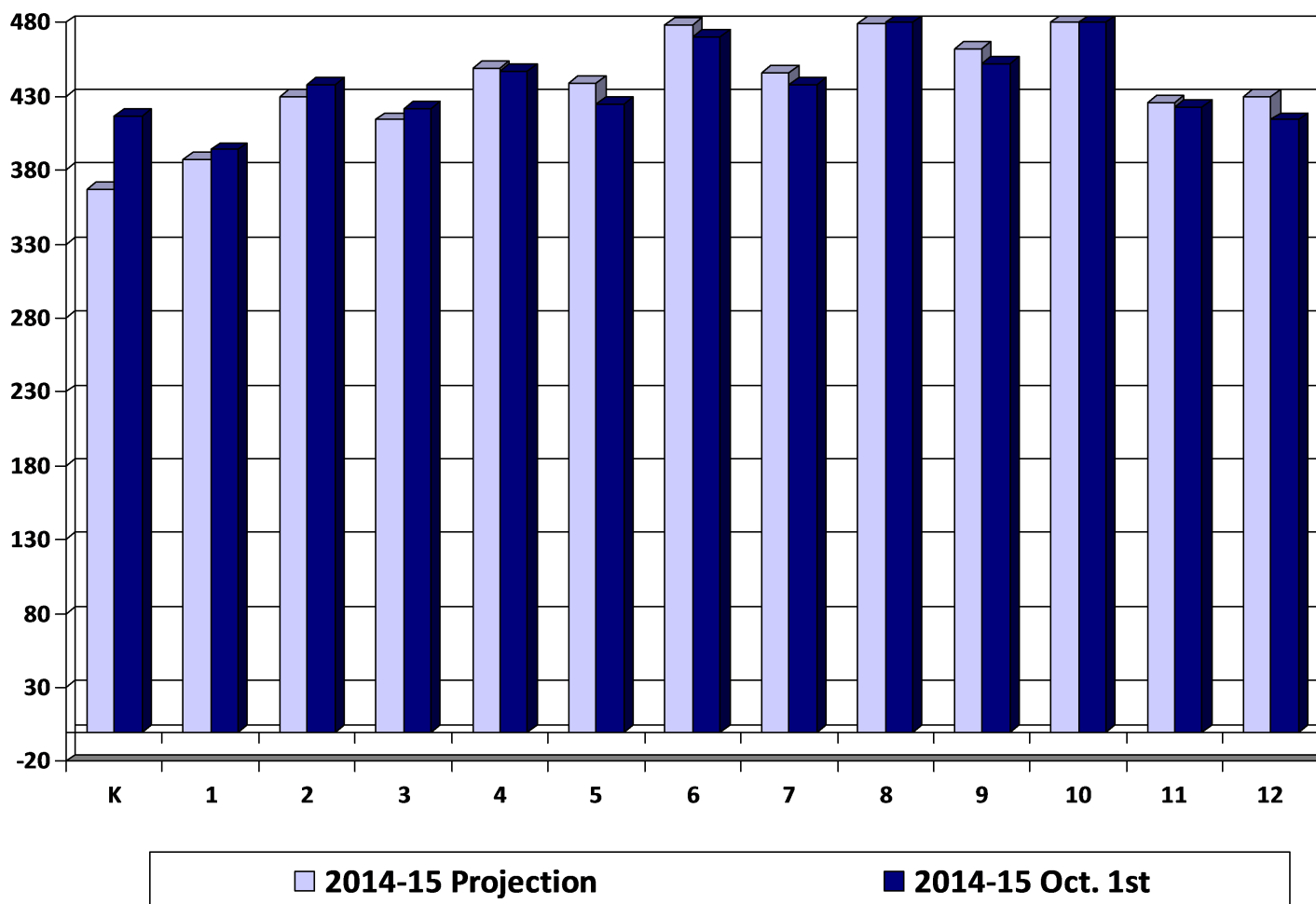
- Last year's enrollment projection was under-estimated by 16 students.
- Our internal monthly enrollment reports adjust down post-secondary and shared time students.
- The official Oct. 1<sup>st</sup> MARSS submission by MDE will report a higher enrollment with post-secondary and shared time students.

	<b>2014-15 Projection</b>	<b>2014-15 Oct. 1<sup>st</sup></b>	<b>Difference</b>
<b>K</b>	367	417	50
<b>Gr. 1-5</b>	2,119	2,126	7
<b>Gr. 6-8</b>	1,403	1,398	-5
<b>Gr. 9-12</b>	1,814	1,778	-36
<b>Total</b>	5,703	5,719	16



# Review of 2014-15

## Enrollment Projection by Grade



# Enrollment Projection Data

---

- The district uses the Schoolfinances.com enrollment projection model.
- The model allows schools to develop enrollment projections based on three different sets of data:
  - ☐ **October 1<sup>st</sup> MARSS submission**
  - ☐ **End of Year ADM** is generally used for financial forecast
  - ☐ **District Data** allows schools to enter enrollment history taken at any time, resident ADM or any other historical data by grade

# Kindergarten Projection Methods

---

- **Hold constant** maintains the 2014-15 kindergarten level.
- **Linear projection** is a straightforward mathematical projection based on nothing more than the past five years of data.
- **County birth method** uses the total number of live births in Wright County and examines what percentage of those births enroll in kindergarten. The projection is based on the average percentage of the last four years.
- **Zip code method** examines the zip codes in the district and uses a linear projection of live births on the last four years of data and computes the projected enrollment based on the lowest, average, and highest ratios.
- **District-determined method** examines county birth rates in Wright County and compares that to actual student enrollment numbers in the District and projects that percentage for the next five years.

# Kindergarten Projection Methods

Birth Year	Kdgn Enroll Year	Wright Co. Births	Actual Kdgn Enrollment	% of Wright Co. Births Enrolled
2003	2008	1,926	464	24.1%
2004	2009	1,888	434	23.0%
2005	2010	2,023	455	22.5%
2006	2011	2,152	417	19.4%
2007	2012	2,183	433	19.8%
2008	2013	2,095	378	18.0%
2009	2014	1,943	417	21.5%
2010	2015	1,900	375*	19.8%*
2011	2016	1861	368*	19.8%*
2012	2017	1830	361*	19.8%*
2013	2018	1787	353*	19.8%*

\* Projected K enrollment based on County births

# Kindergarten Projection Methods

- Using Oct. 1<sup>st</sup> district data

	10-11	11-12	12-13	13-14	14-15	15-16	16-17	17-18	18-19	19-20
<b>Actual enrollment</b>	455	417	433	387	417					
<b>Hold constant</b>						417	417	417	417	417
<b>Linear projection</b>						393	384	375	365	356
<b>Wright Co. Ave. births</b>						379	370	364	356	343
<b>Zip code method - Low</b>						370	377	364	344	332
<b>District Determined Method</b>						<b>375</b>	<b>368</b>	<b>361</b>	<b>353</b>	<b>345</b>

# Enrollment Projection Methods

---

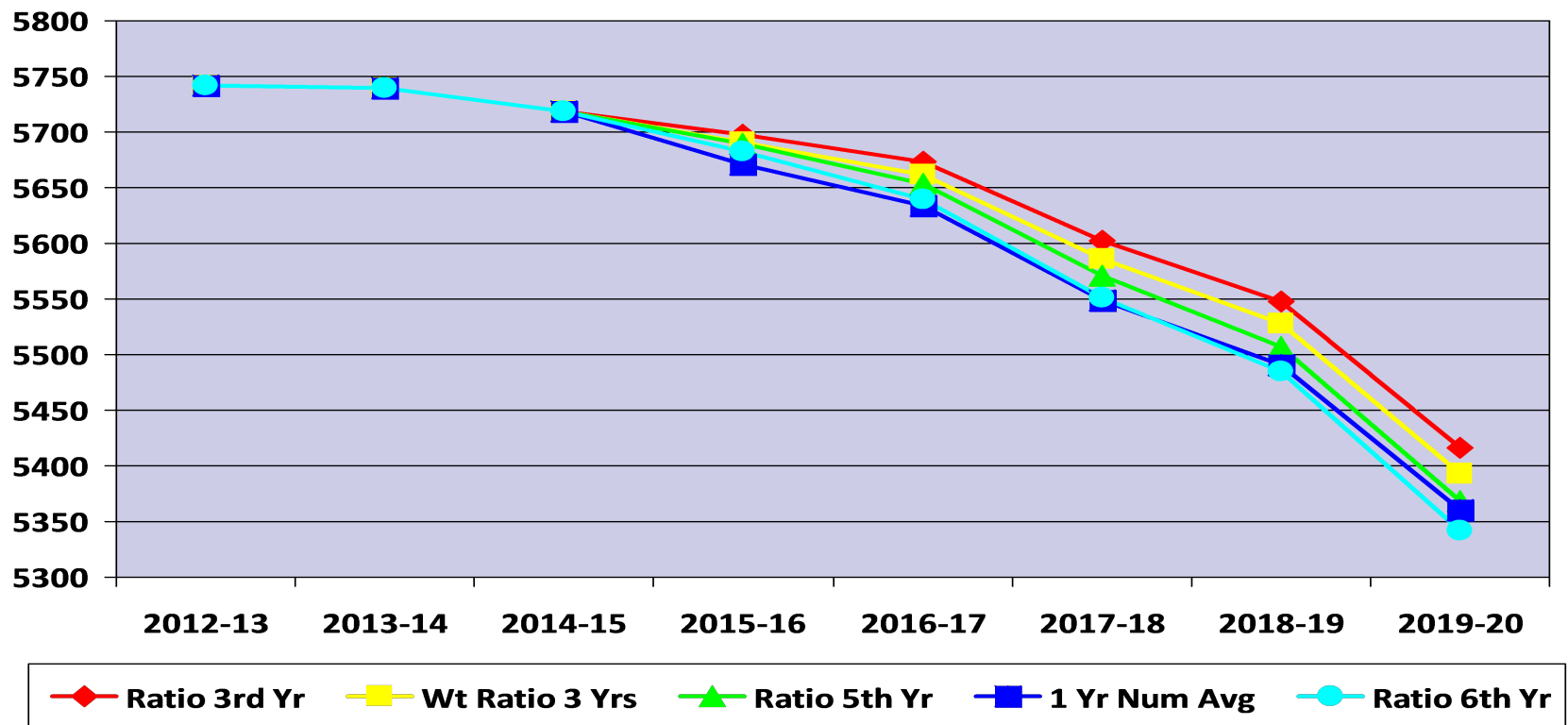
- After the kindergarten enrollment projection is complete, the overall K-12 enrollment is determined by a variety of methods:
  - ☐ Cohort Survival Method
  - ☐ Weighted Cohort Survival Method
  - ☐ Numerical Survival Method
  - ☐ Weighted Numerical Survival Method
  - ☐ Merged Method

# Projection Methods Comparison

- Using Oct. 1<sup>st</sup> district data, eighteen different variations were examined.
- The following five were selected for detailed analysis:

	<b>12-13</b>	<b>13-14</b>	<b>14-15</b>	<b>15-16</b>	<b>16-17</b>	<b>17-18</b>	<b>18-19</b>	<b>19-20</b>
<b>Ratio 3rd Year</b>	5,742	5,739	5,719	5,697	5,673	5,602	5,548	5,416
<b>Wt Ratio 3rd Year</b>	5,742	5,739	5,719	5,691	5,662	5,586	5,528	5,393
<b>Ratio 5th Year</b>	5,742	5,739	5,719	5,689	5,654	5,570	5,507	5,368
<b>1 Yr Num Avg</b>	5,742	5,739	5,719	5,671	5,634	5,549	5,491	5,360
<b>Ratio 6<sup>th</sup> Year</b>	5,742	5,739	5,719	5,683	5,640	5,551	5,485	5,342
<b>Max Difference</b>				26	39	53	64	74

# Projection Methods Comparison



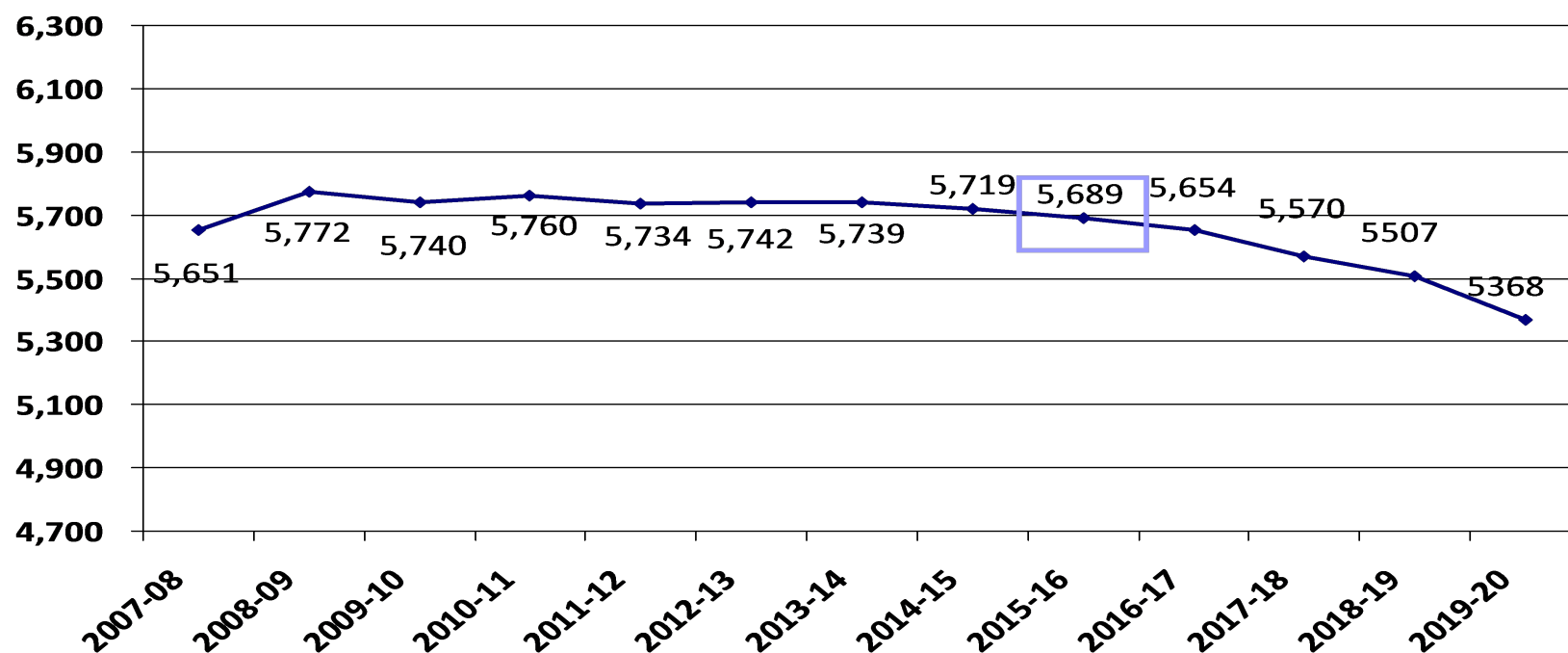


# 2015-16 Enrollment Projection

---

- Factors considered: housing market, economic conditions, Wright County births, open enrollment, budget reductions, and new programs (ADED K, Quest, STEM)
- Ratio 5th Year Method
- K-12 Enrollment 5,689
- Decrease of 30 students or 0.53%

# 2015-16 Enrollment Projection



# 2015-16 Enrollment Projection by Grade Groupings

■ With future enrollments, need to consider building capacity:

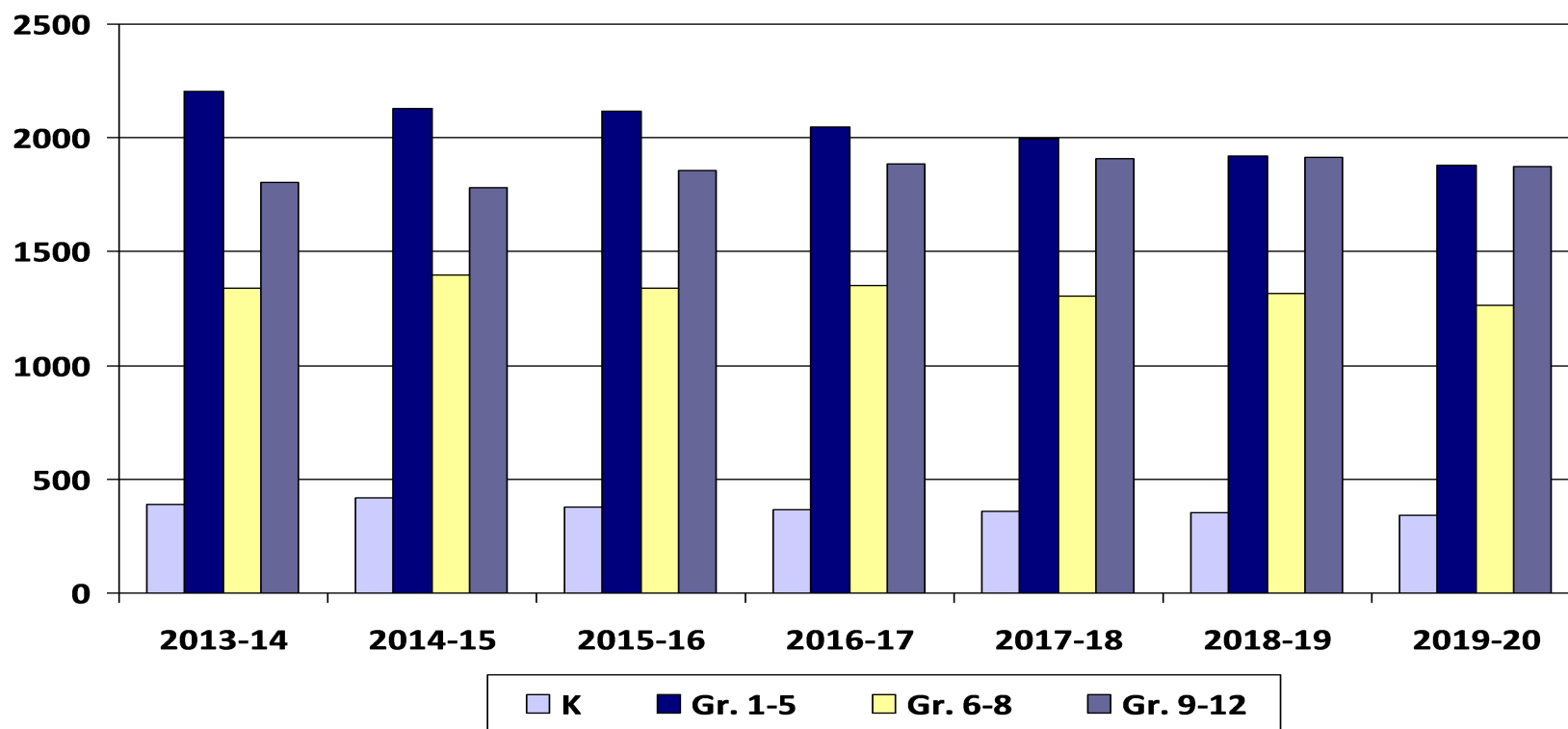
□ BHS – 1,935, PHX – 64 and PRIDE – 25

□ BCMS – 1,375

□ Elementary – 3,200

	2014-15	2015-16	2016-17	2017-18	2018-19	2018-19
<b>K</b>	<b>417</b>	375	368	361	353	345
<b>Gr. 1-5</b>	<b>2,126</b>	2,118	2,050	1,997	1,921	1,882
<b>Gr. 6-8</b>	<b>1,398</b>	1,340	1,353	1,305	1,318	1,266
<b>Gr. 9-12</b>	<b>1,778</b>	1,855	1,883	1,908	1,916	1,876
<b>Total</b>	<b>5,719</b>	5,689	5,654	5,570	5,507	5,368
		<b>-30</b>	-35	-83	-63	-139
		<b>-0.52%</b>	-.62%	-1.47%	-1.13%	-2.53%

# 2015-16 Enrollment Projection by Grade Groupings

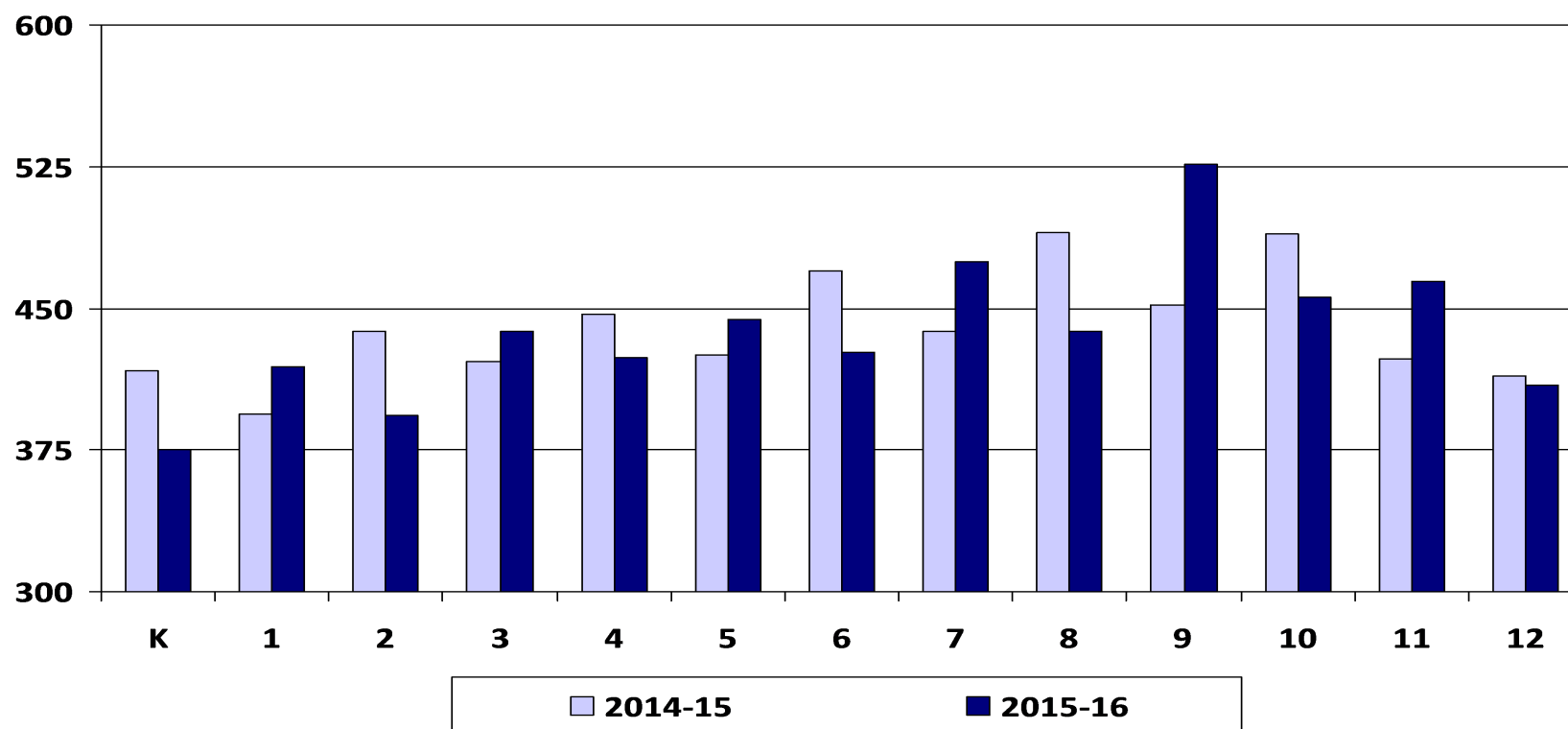


# 2015-16 Enrollment Projection by Grade

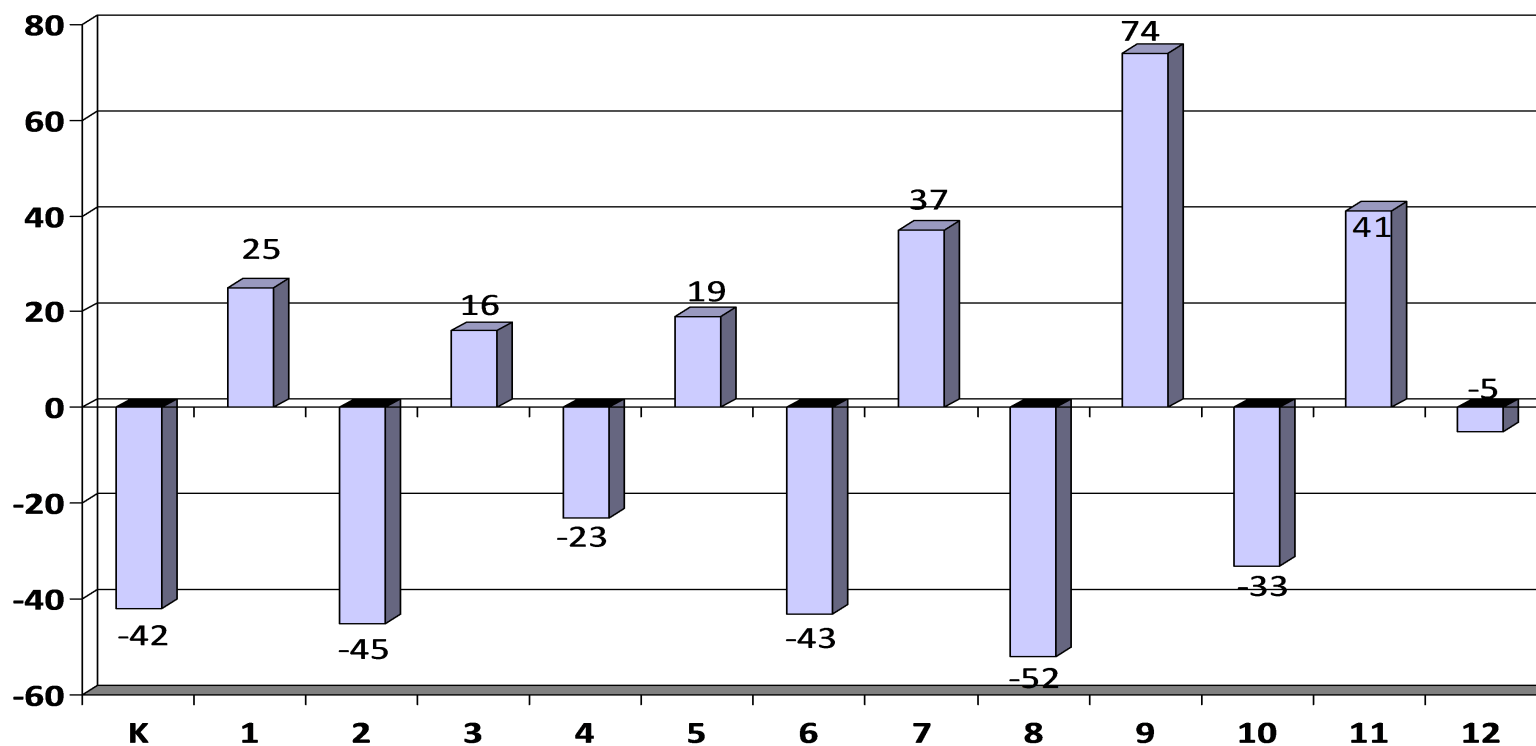
---

	2015-16	2016-17	2017-18	2018-19	2019-20
<b>K</b>	375	368	361	353	345
<b>1</b>	419	377	370	363	355
<b>2</b>	393	418	376	369	362
<b>3</b>	438	393	418	376	369
<b>4</b>	424	440	395	420	378
<b>5</b>	444	421	437	392	417
<b>6</b>	427	446	423	439	394
<b>7</b>	475	431	451	428	444
<b>8</b>	438	475	432	451	428
<b>9</b>	526	470	510	463	484
<b>10</b>	456	530	475	515	467
<b>11</b>	464	433	504	451	489
<b>12</b>	409	449	419	487	436
<b>Total</b>	5,689	5,654	5,570	5,507	5,368

# 2014-15 Actual vs. 2015-16 Enrollment Projection by Grade



# 2015-16 Enrollment Change by Grade



# WADM Report

- The weighted average daily membership (WADM) projection shows a relatively flat projection in student aid.
- Keep in mind the district's enrollment history tends to decline from Oct. 1<sup>st</sup> to June 1<sup>st</sup>.

	2015-16		2016-17		2017-18		2018-19	
	Enroll	WADM	Enroll	WADM	Enroll	WADM	Enroll	WADM
HK	21	<b>21</b>	21	<b>21</b>	21	<b>21</b>	21	<b>21</b>
K	375	<b>375</b>	368	<b>368</b>	361	<b>361</b>	353	<b>353</b>
Gr. 1-3	1,250	<b>1,250</b>	1,188	<b>1,188</b>	1,164	<b>1,164</b>	1,108	<b>1,108</b>
Gr. 4-6	1,295	<b>1,295</b>	1,307	<b>1,307</b>	1,255	<b>1,255</b>	1,252	<b>1,252</b>
Gr. 7-8	913	<b>1,096</b>	907	<b>1,088</b>	882	<b>1,059</b>	878	<b>1,054</b>
Gr. 9-12	1,855	<b>2,227</b>	1,883	<b>2,260</b>	1,908	<b>2,289</b>	1,916	<b>2,299</b>
ECSE	107	<b>107</b>	104	<b>104</b>	101	<b>101</b>	99	<b>99</b>
M.C.P.U		<b>9</b>		<b>9</b>		<b>25</b>		<b>18</b>
Total	5,816	<b>6,380</b>	5,778	<b>6,345</b>	5,692	<b>6,275</b>	5,627	<b>6,204</b>



# Conclusion

---

- Uncertain economic factors make enrollment projections difficult.
- BHM's enrollment is projected to decline over the next three to five years.



5,689