

EDUCATIONAL SPECIFICATIONS

For Granby Memorial High School

INTERIOR ALTERATIONS AND ENHANCEMENTS

Kitchen / Dining Commons / Music Education Spaces

Project Rationale

The Granby Public Schools operates one high school. The current facility is an amalgamation of a number of additions to the original 1940s building. Since at least the 1998 addition the High School has not had a proper commercial quality food preparation area support the student population. Food has been stored and prepared at the Granby Memorial Middle School, which is in a separate building situated to the north of the High School. The Middle School kitchen facility is undersized for the demands of preparing food for both schools. Prepared food is placed on racks and moved by hand from the Middle School to the High School.

In conjunction with the lack of a kitchen the dining area is currently poorly arranged, has inadequate lighting, little connection with the outdoors, and has a low ceiling.

Additionally, the music program lacks space for instrumental and ensemble practice.

The New England Association of Schools and Colleges (NEASC) as repeatedly cited Granby Public Schools for the lack of a kitchen and food preparation area as well as for the condition of the dining area at the High School. In addition, NEASC has cited the inadequate size of the Middle School kitchen in their evaluation of the District's facilities.

Student Enrollment / School Capacity

The Granby Public Schools have experienced a very slight growth in enrollment over the past two years and this pattern is projected to continue. The current enrollment for the Granby Memorial High School in fiscal year 2021 is 572. The highest project enrollment over the next eight (8) years is in fiscal year 2024, when GMHS enrollment is projected to be 632 students.

The current school capacity is circa 1,000 students. The school capacity after this project will remain unchanged at circa 1,000 students. There are no future projects contemplated that will impact the capacity of this facility.

Long-Range Plan

The long-range plan for Large Capital Improvements, as established by the Board of Education of the Granby Public Schools and provided to the Capital Priorities Advisory Committee for the Town of Granby, calls for the provision of a safe and appropriate learning environment. Maintaining an acceptable learning environment requires

preparation and provision of appropriate meals and snacks in a properly configured dining area. The inadequacies of the music program spaces also impinge upon this mission.

Granby Public Schools has developed and adopted a multiple-phase schedule for enacting the various elements of the Large Capital Improvement Plan, which incorporates work at each of our schools. The Granby Memorial High School will remain as the Town’s high school for the foreseeable future.

Construction Bonus Requests

Granby Public Schools intends to apply for CHOICE Grant Bonus as defined under C.G.S. 10-285a (g) and intends to offer the following:

	FY22	FY23	FY24	FY25	FY26
Projected Open Choice Enrollment HS Only	25	29	30	27	24
Projected HS Enrollment	581	582	632	628	598
Percent of HS Enrollment	4.3%	5.0%	4.7%	4.3%	4.0%

The Project

The Granby Board of Education proposes the following components of this Interior Alterations and Enhancements project:

- Architectural drawings and specifications
- Test for any hazardous materials
- Removal of existing walls, ceilings, flooring and associated materials. Disposal of all refuse materials, disposal of any hazardous materials in an appropriate manner.
- Inspection of floor slab and replacement of any deteriorated areas as needed.
- Installation of new demising walls.
- Provision and installation of new food service equipment with related mechanical, plumbing, and electrical systems.
- Reconfiguration of existing HVAC systems to accommodate changes to the floor plan.
- Floor finishes appropriate for the primary use of each space.
- Reconfiguration of public address, paging, and phone systems to accommodate the revised floor plan.
- Provision and installation of appropriate sound attenuation materials.

Overview of Programs

There are four program areas that will be impacted by this project: food preparation and service, dining, music (choral and instrumental), vocational / technical. The food preparation areas will be entirely new to the school as none exist at this time. The dining commons will be heavily reconfigured and relocated. The choral music program will move from its current location to a new space. The instrumental music program will be housed in a new space as it currently does not have a space of its own. The vocational / technical program spaces will be reconfigured but will remain substantially where and as they are currently situated.

Space	Dining Commons
Description	An age and use appropriate space with capability of accommodating non-dining uses when needed. Maximize daylight as much as possible. Adequate for up to four (4) seating waves of 250+/- 10% students in each seating wave.
Equipment	
Tables / chairs	Age and use appropriate.
Display screens	Electronic display screens with support system and computer for operation
PA system	Local PA / broadcast system that can be accessed
Wireless connectivity	
Window shades	
Physical Attributes	
Floor	Hard surface, impermeable, easily cleaned, non-slip, long-wearing
Walls	Waterproof at washing and prep areas. Abuse resistant throughout
Ceilings	Sound absorptive, light reflective, aesthetically interesting
Lighting	Overall uniform lighting, task specific where appropriate

Space	Kitchen
Description	A commercial quality, full capacity area for food storage, preparation, and serving. Will include space for a desk, file cabinet, and chair for the kitchen manager. Include dish and utensil washing and storage areas. Incorporate recycling programs into the design. Adequate for up to four (4) seating waves of 250+/- 10% students in each seating wave.
Equipment	
Dry goods storage	With racking, shelves, and room for at least two mobile carts
Food freezer	With racking and self-contained chilling equipment.
Food cooler	With racking and self-contained chilling equipment.
Washer / Dryer	Commercial quality units capable of handling clothing and associated cloth such as aprons
Ice maker	
Work tables	Stainless steel, on rollers with locks
Gas range	Four burner
Braiser	Gas or electric
Convection oven	Two
Slicer	
Mixer	
Hot holding	One large, one small
Cold holding	One large, one small
Deli serving	
Hot serving well	One single bay, one four bay
Cold serving well	Two
Sandwich slide	
Griddle	
Pizza serving stone	
Grab & go server	
Milk case	
Cashier stand	Two
Condiment stand	
Tray washer	
Pot sink	
Display screens	Electronic display screens with support system and computer for operation
PA system	Local PA / broadcast system that can be accessed
Wireless connectivity	
Window shades	
Physical Attributes	
Floor	Hard surface, impermeable, easily cleaned, non-slip, long-wearing
Walls	Waterproof at washing and prep areas. Abuse resistant throughout
Ceilings	Impermeable, washable, non-staining
Lighting	Overall uniform lighting, task specific where appropriate

Space	Choral Music
Description	An acoustically and dynamically appropriate space for choral music practice and teaching. Flat floor with risers or sloped floor with standing levels. Adequate for 40 to 50 students and one teaching staff.
Equipment	
Risers	If not built-in, demountable units capable of supporting anticipated loading
Display screens	Electronic display screens with support system and computer for operation
PA system	Local PA / broadcast system that can be accessed
Wireless connectivity	
Sound system	Independent sound and recording system for use within this space
Physical Attributes	
Floor	Resilient surface, durable, easily cleaned, non-slip, long-wearing, non-sound reflective
Walls	Acoustically appropriate configuration and finish
Ceilings	Sound absorptive/reflective (as required), light reflective, aesthetically interesting
Lighting	Overall uniform lighting, task specific where appropriate

Space	Instrumental Music
Description	An acoustically and dynamically appropriate space for instrumental music practice and teaching. Flat floor with risers or sloped floor with standing levels. Adequate for 25 to 100 students and one teaching staff.
Equipment	
Risers	If not built-in, demountable units capable of supporting anticipated loading
Display screens	Electronic display screens with support system and computer for operation
PA system	Local PA / broadcast system that can be accessed
Wireless connectivity	
Sound system	Independent sound and recording system for use within this space
Physical Attributes	
Floor	Resilient surface, durable, easily cleaned, non-slip, long-wearing, non-sound reflective
Walls	Acoustically appropriate configuration and finish
Ceilings	Sound absorptive/reflective (as required), light reflective, aesthetically interesting
Lighting	Overall uniform lighting, task specific where appropriate

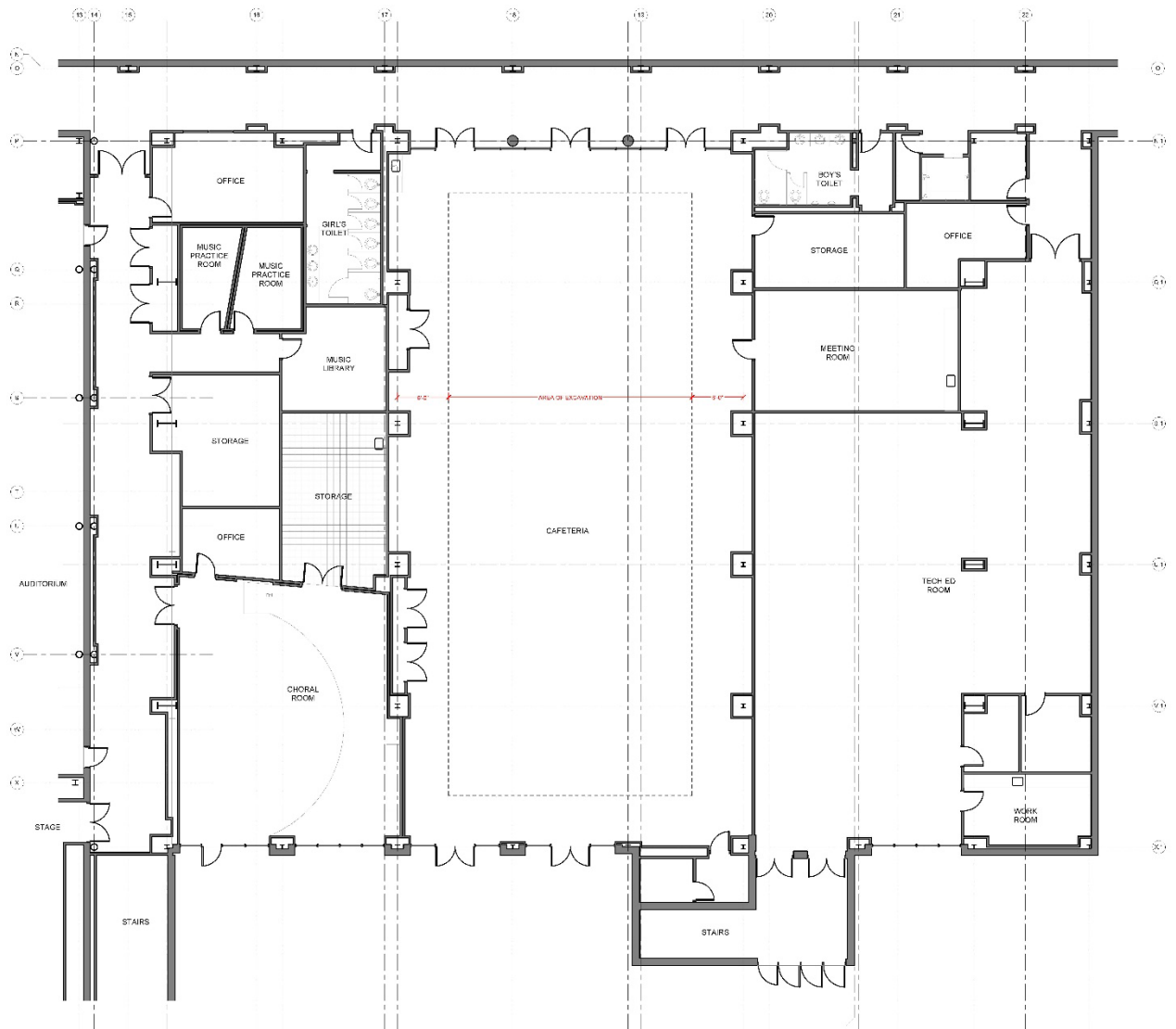
Space	Music Support
Description	Two (2) practice rooms for two to three students. Instrument storage area. Music program storage. Music program office to be shared by two educators.
Equipment	
Practice Rooms	Sound proof stand-alone spaces for musical practice.
Instrument Storage	Secure, lockable independent storage units for storage of various sized instruments
Music Program Storage	Secure, lockable storage of materials related to the music program
Music Program Office	Adequately sized work space in proximity to the choral and instrumental rooms
Physical Attributes	
Floor	Resilient surface, durable, easily cleaned, non-slip, long-wearing, non-sound reflective
Walls	Acoustically appropriate configuration and finish
Ceilings	Sound absorptive/reflective (as required), light reflective, aesthetically interesting
Lighting	Overall uniform lighting, task specific where appropriate

Building Systems

The area within the existing building where this alteration will be done is a concrete slab on grade with steel columns supporting the second-floor constructions above. The second-floor deck is steel beams. The existing demising walls are primarily CMU construction, with some that may be LWG metal with GWB.

New construction is anticipated to be LWG metal framing with GWB sheathing.

Ceilings will be a combination of acoustical tile and perhaps GWB clouds for acoustical attenuation and aesthetic interest.



Existing dining, music, and vo-tech area to be altered.