



ROSEVILLE AREA SCHOOLS

2024 Enrollment and Demographic Report

November 12, 2024



District Goals and Key Strategies

#2 Our learners contribute to an equitable, caring society.

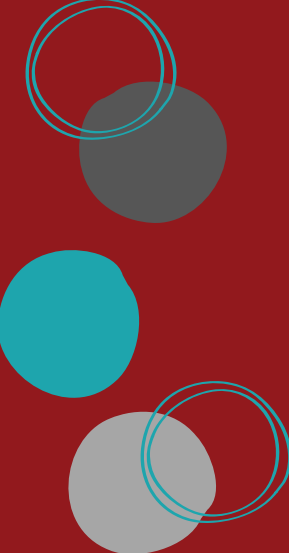
- Cultivate student engagement and joy in learning
- Prepare learners to be racially and socially responsive

#3 We are a culturally responsive, inclusive, anti-racist district.

- Ensure educator commitment to anti-racist practices
- Hire and retain a diverse workforce
- Build a culture of belonging where all feel welcome, included, and safe

#4 The community is united behind meeting student needs.

- Build a culture of belonging
- 



Enrollment & Demographic Report

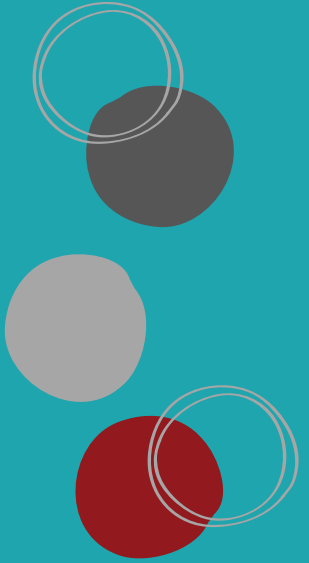
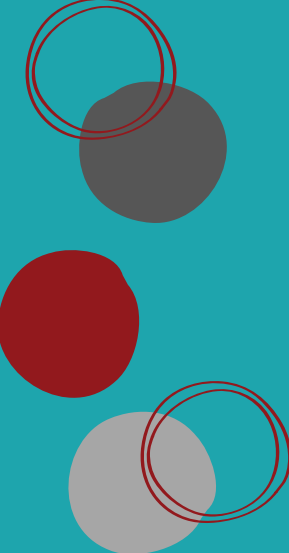
Section 1: Enrollment Report

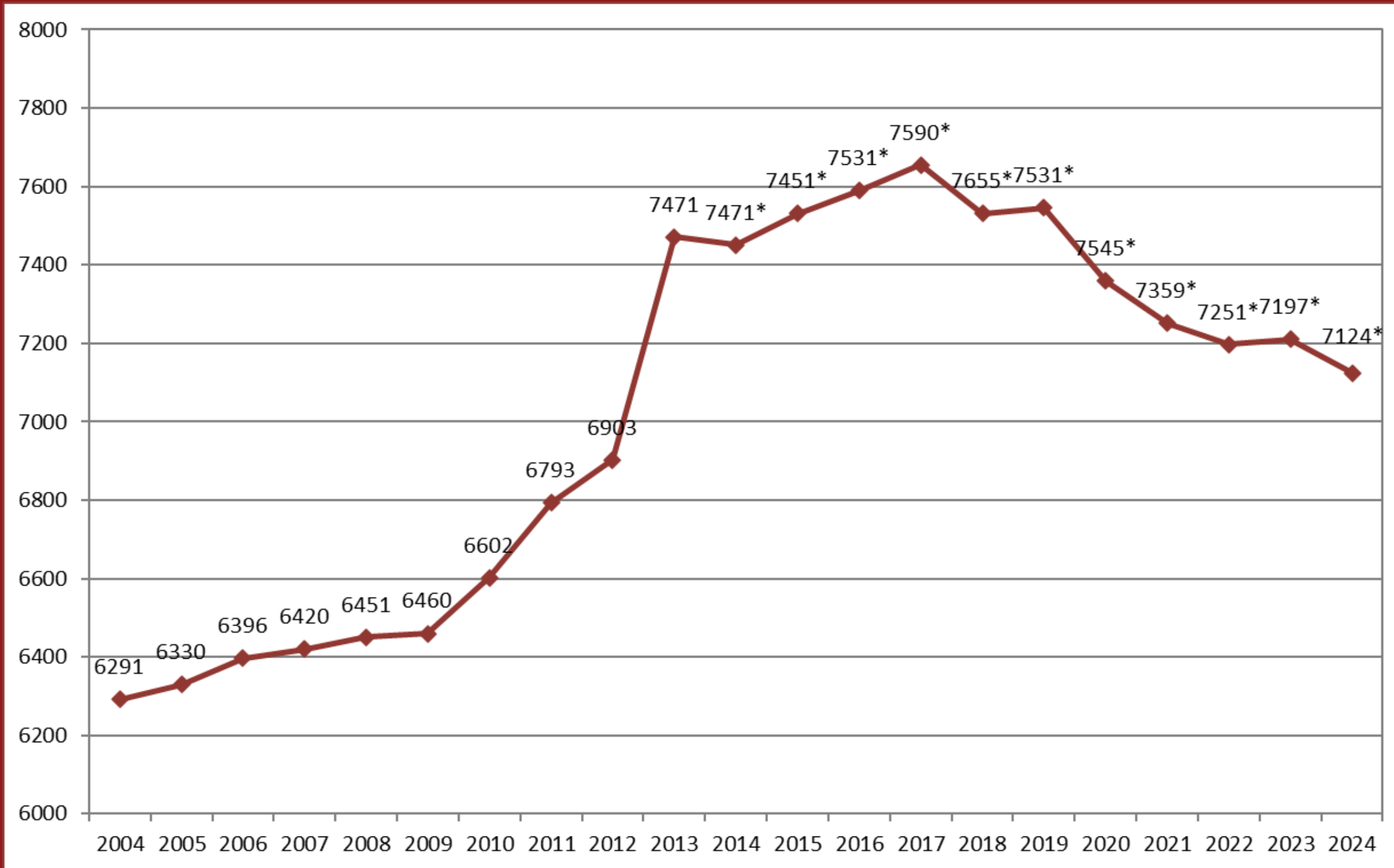
- October 1 Student Enrollment Trends
- Class Size- Elementary

Section 2: Demographic Report

- Race/Ethnicity
- Multilingual Learners
- Special Education
- Educational Benefits

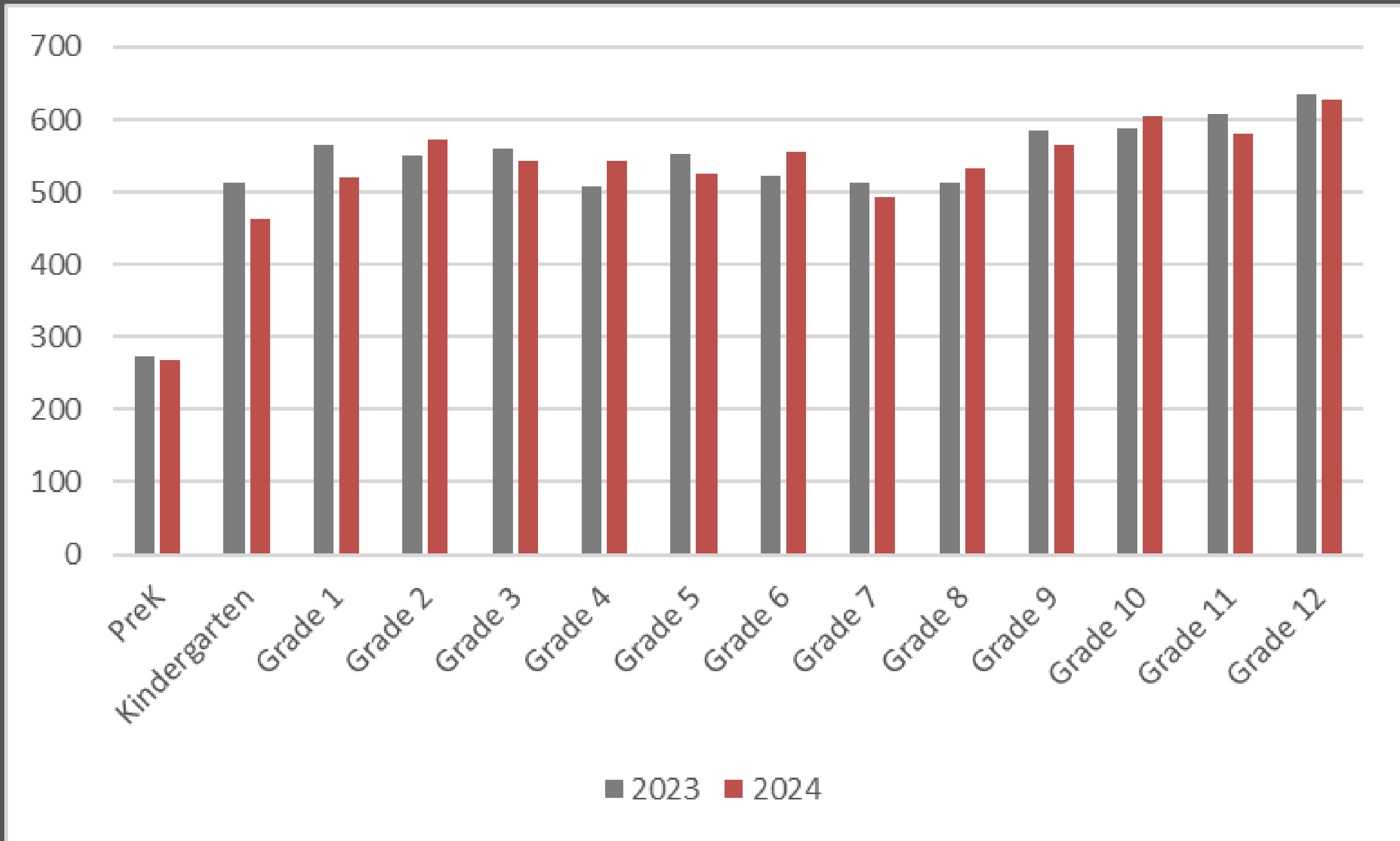
Enrollment



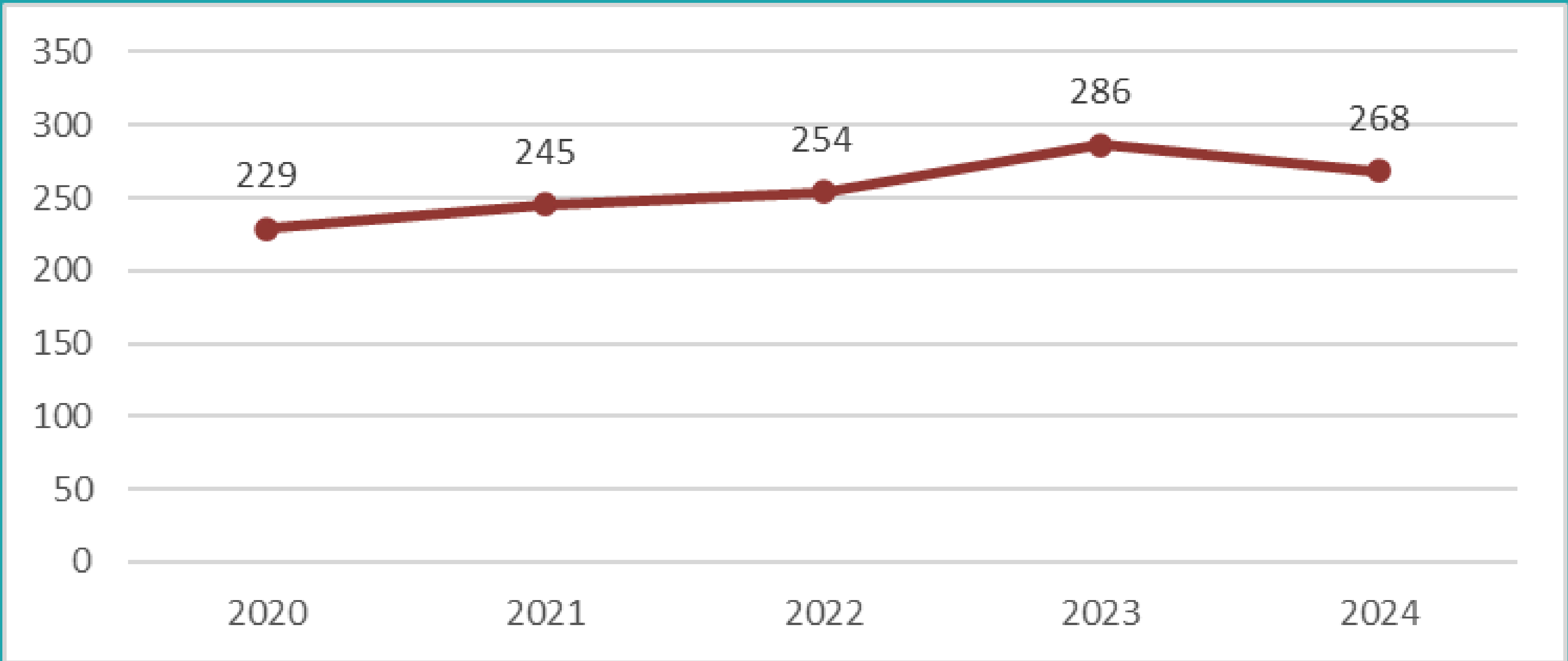


Total Enrollment Trend 2004-2024

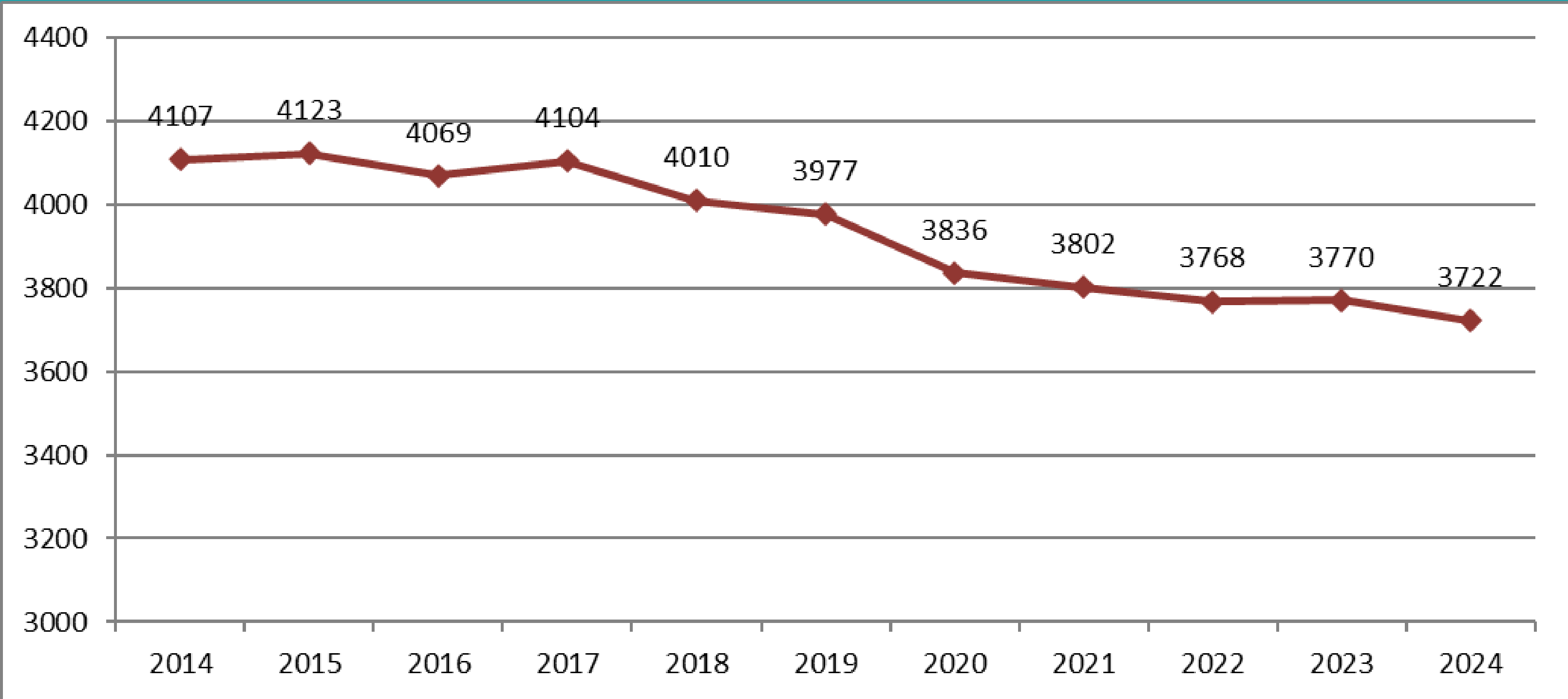
*Includes Harambee for 2013-14 and beyond



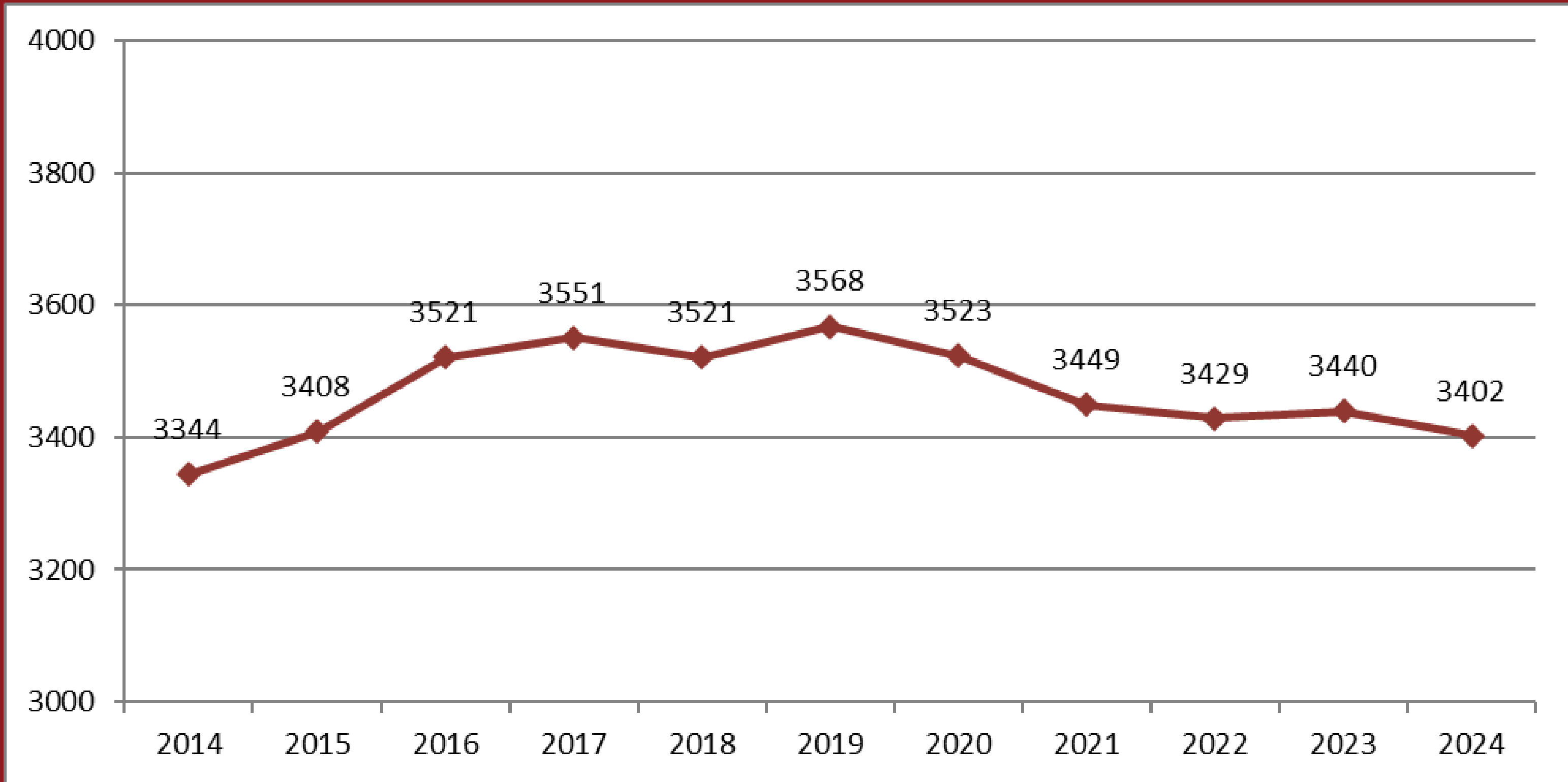
2024 Enrollment by Grade Level



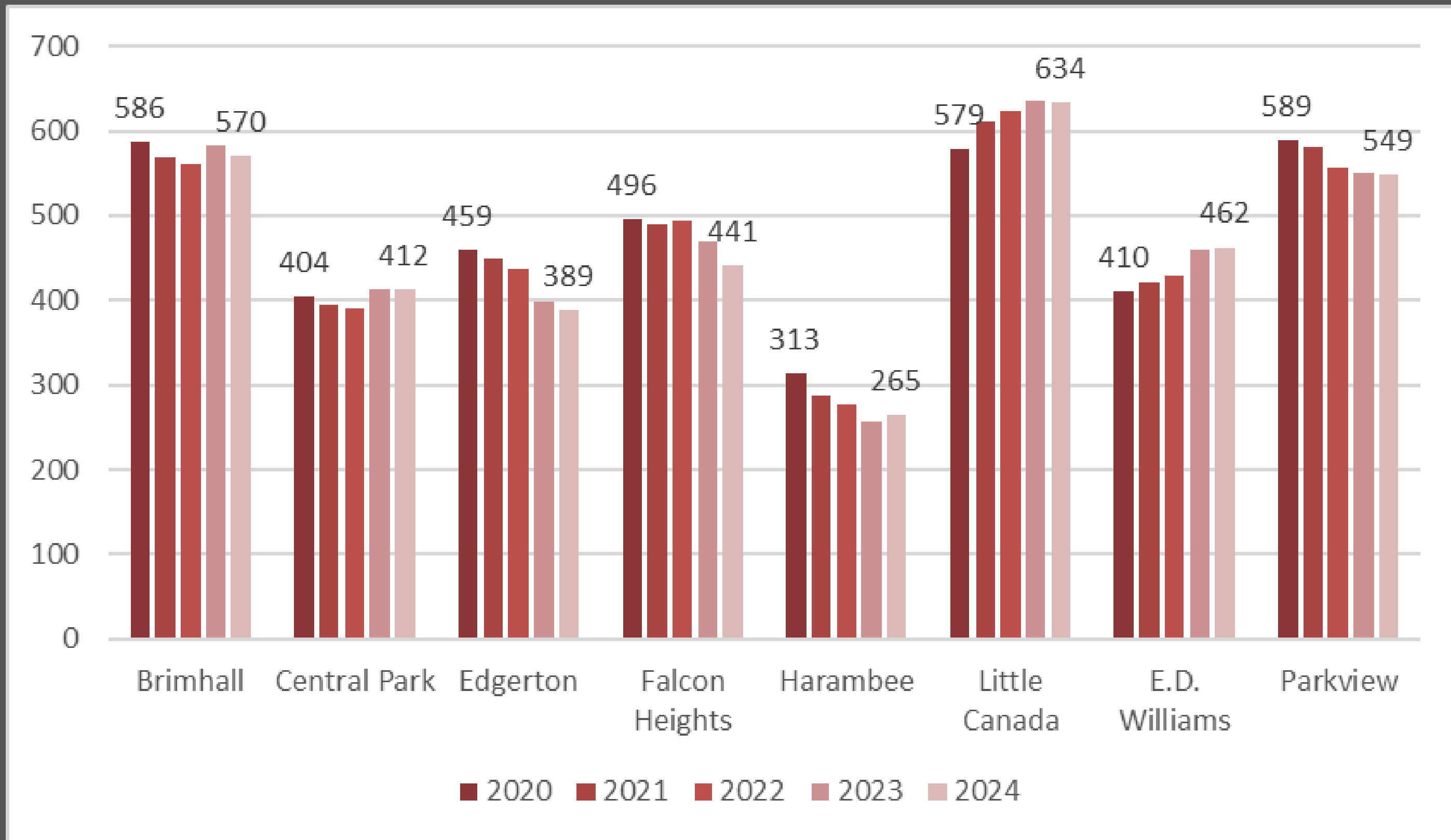
PreK Enrollment 2020-2024



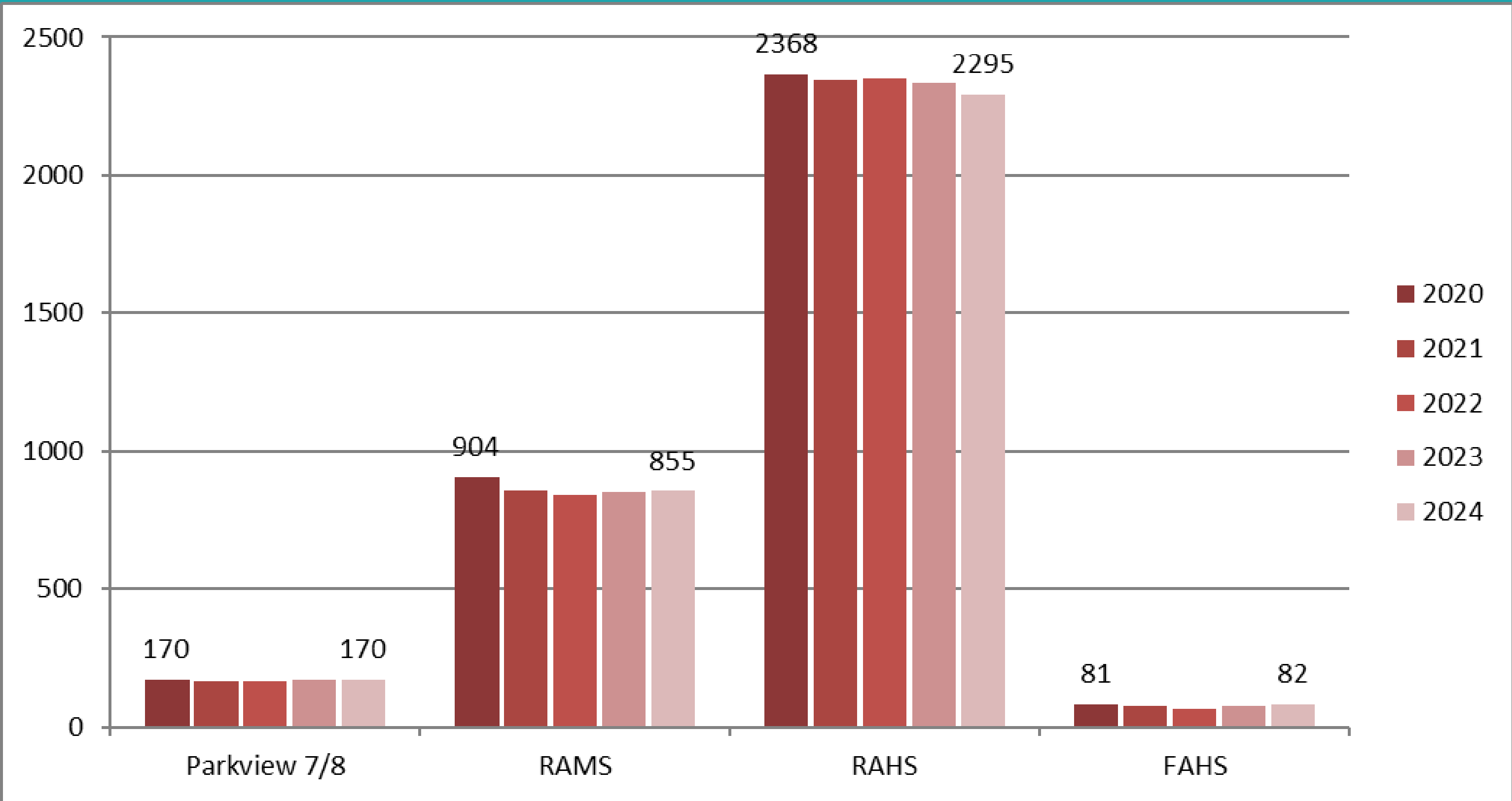
K-6 Enrollment 2014-2024



7-12 Enrollment 2014-2024



Elementary Building Enrollment Trends

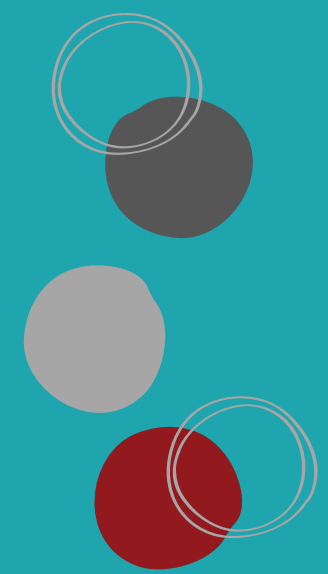
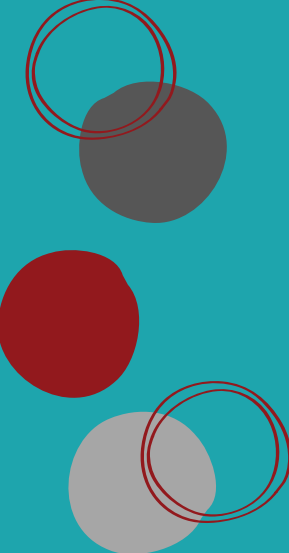


Secondary Building Enrollment Trends

	K	1st	2nd	3rd	4th	5th	6th	Building
Brimhall	19.5	23	27	29	24.3	26.7	26.3	24.78 / 25.35
Central Park	16	20	18.7	25.7	26.5	29.5	29.5	22.89 / 22.89
Edgerton	17.5	25	18.7	19.3	28.5	29.5	24.7	22.88 / 19.95
Falcon Heights	18.7	18.3	27.3	18.7	31.5	32	32.5	24.31 / 22.38
Harambee	21	22	23.5	27	22.5	28	16	22.08 / 21.42
Little Canada	14.8	17.8	18	19	24.8	22.8	24	21.86 / 22.00
E.D. Williams	21	19	28.7	20	26.3	28.5	30	24.32 / 25.56
Parkview	17	24.7	24.7	27.7	24.7	29	29.7	21.65 / 21.65
District	18.2	21.3	23.4	23.5	25.7	28.3	27.1	23.58 / 23.18

2024 Average Class Size - Elementary

Demographic Report



Preliminary Minnesota Automated Reporting Student System

(MARSS) Reports:

Compensatory Education

Home Language

Enrollment

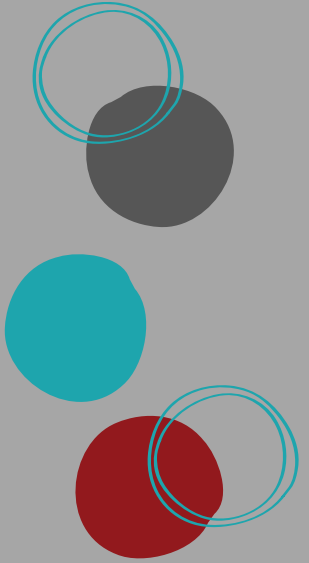
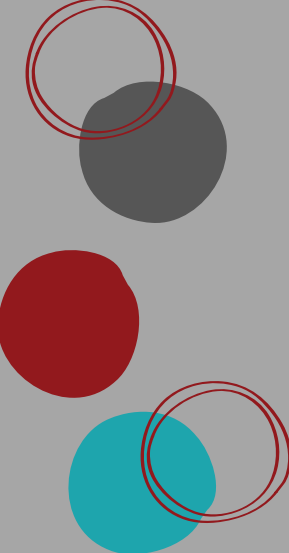
Economic Indicators

Viewpoint/Synergy

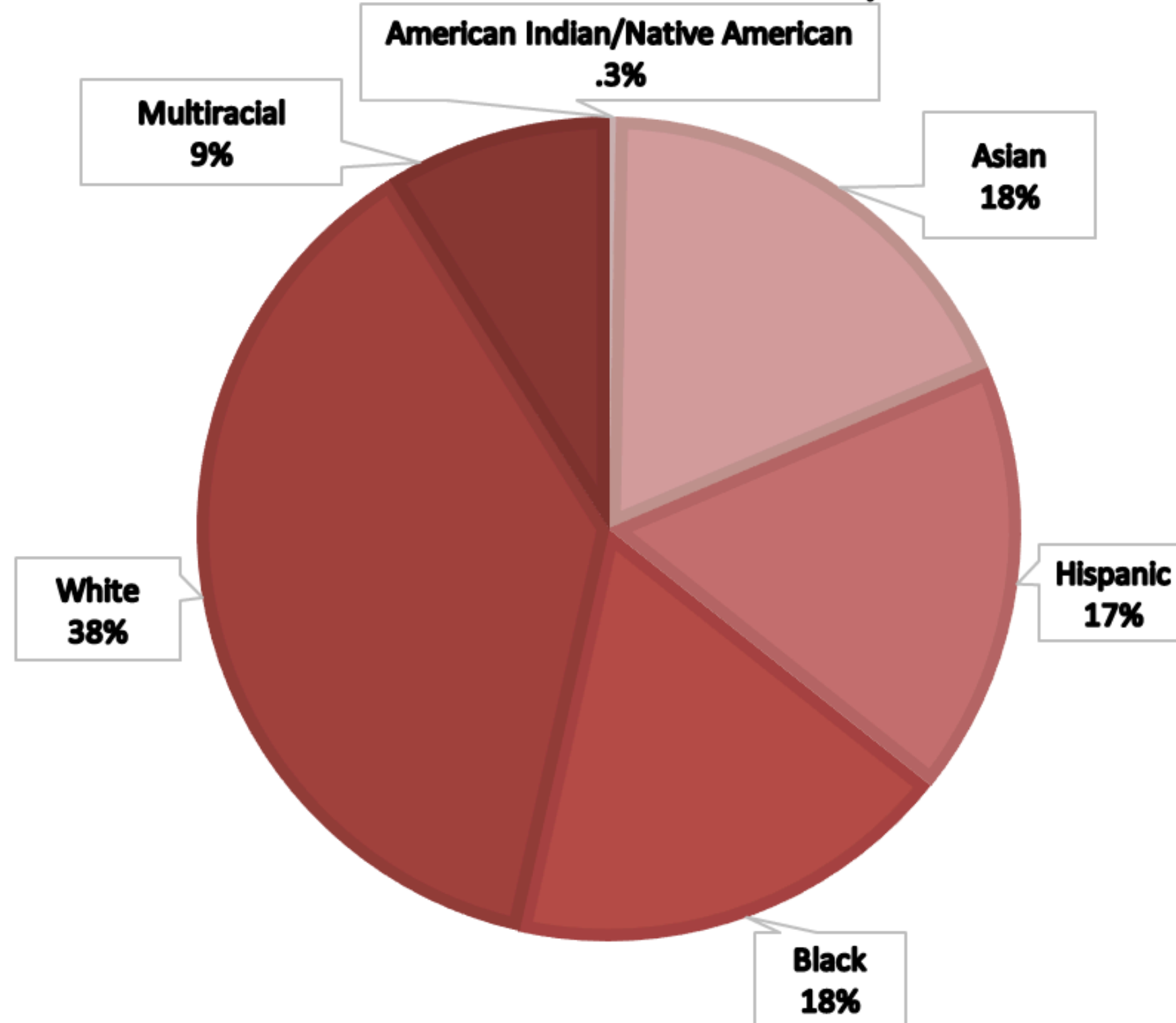
Minnesota Department of Education Data Center

Data Source Notes

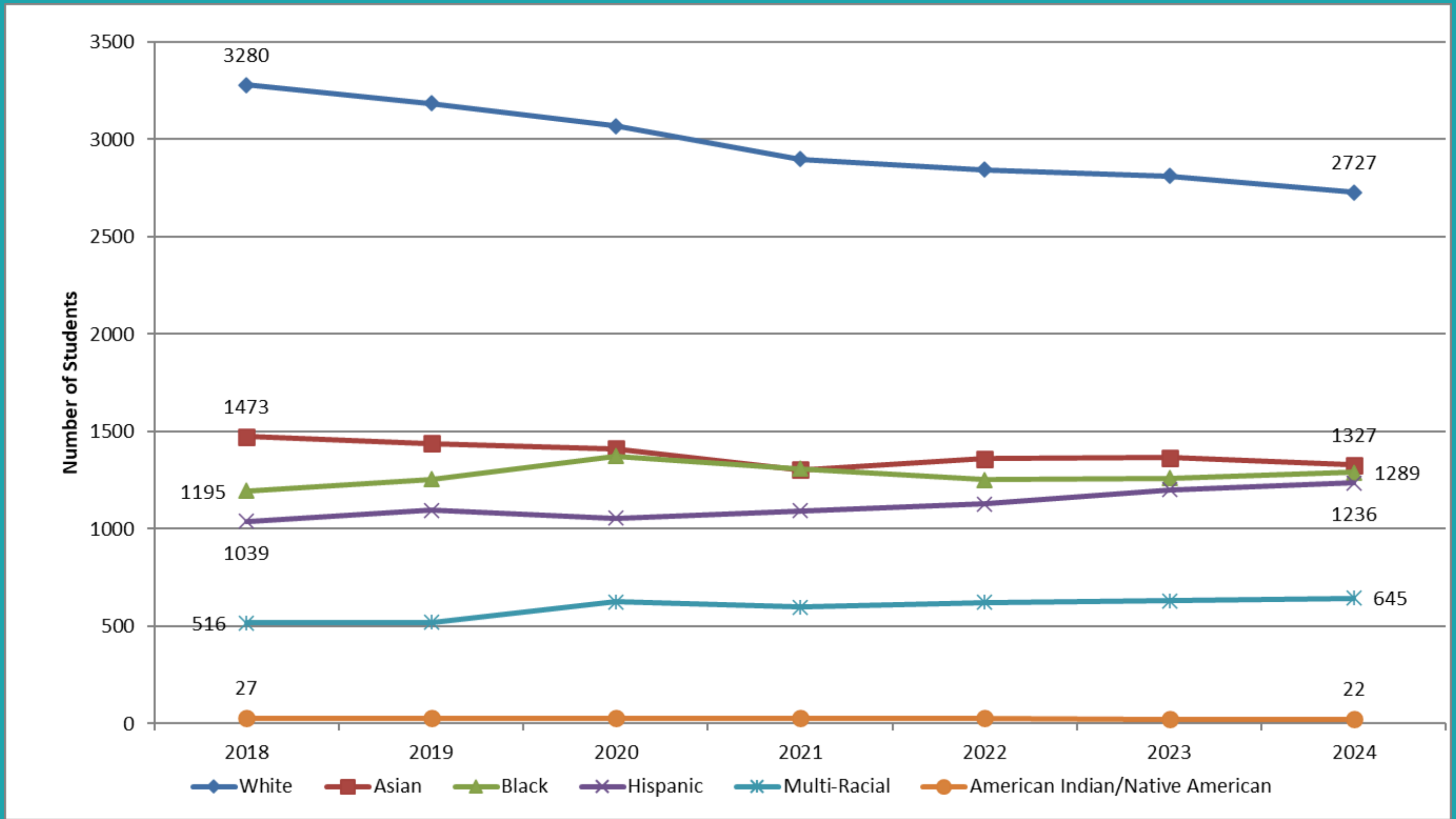
Race/Ethnicity



2024 DISTRICT ENROLLMENT 7,246



Racial/Ethnic Composition



District Enrollment by Race/Ethnicity

	American Indian/Native American		Asian		Hispanic		Black		Multi-Racial		White		BIPOC		Total
Year	#	%	#	%	#	%	#	%	#	%	#	%	#	%	#
2000	50	<1%	679	10.4%	187	2.9%	423	6.5%			5222	79.6%	1339	20.4%	6561
2005	59	<1%	780	12.3%	359	5.6%	627	9.9%			4505	71.2%	1825	28.8%	6330
2010	51	<1%	1149	17.3%	590	8.9%	864	13.0%			3973	60.0%	2654	40.0%	6627
2015*	56	<1%	1623	21.5%	953	12.6%	1302	17.3%			3613	47.9%	3934	52.1%	7547
2020*	29	<1%	1412	18.7%	1054	13.9%	1373	18.2%	624	8.3%	3069	40.6%	4492	59.4%	7561
2021*	28	<1%	1303	18.0%	1093	15.1%	1308	18.1%	598	8.3%	2899	40.1%	4330	59.9%	7229
2022*	27	<1%	1360	18.8%	1129	15.6%	1253	17.3%	622	8.6%	2844	39.3%	4391	60.7%	7235
2023*	23	<1%	1365	18.7%	1201	16.5%	1260	17.3%	631	8.7%	2811	38.6%	4480	61.4%	7291
2024	22	<1%	1327	18.3%	1236	17.1%	1289	17.8%	645	8.9%	2727	37.6%	4519	62.4%	7246

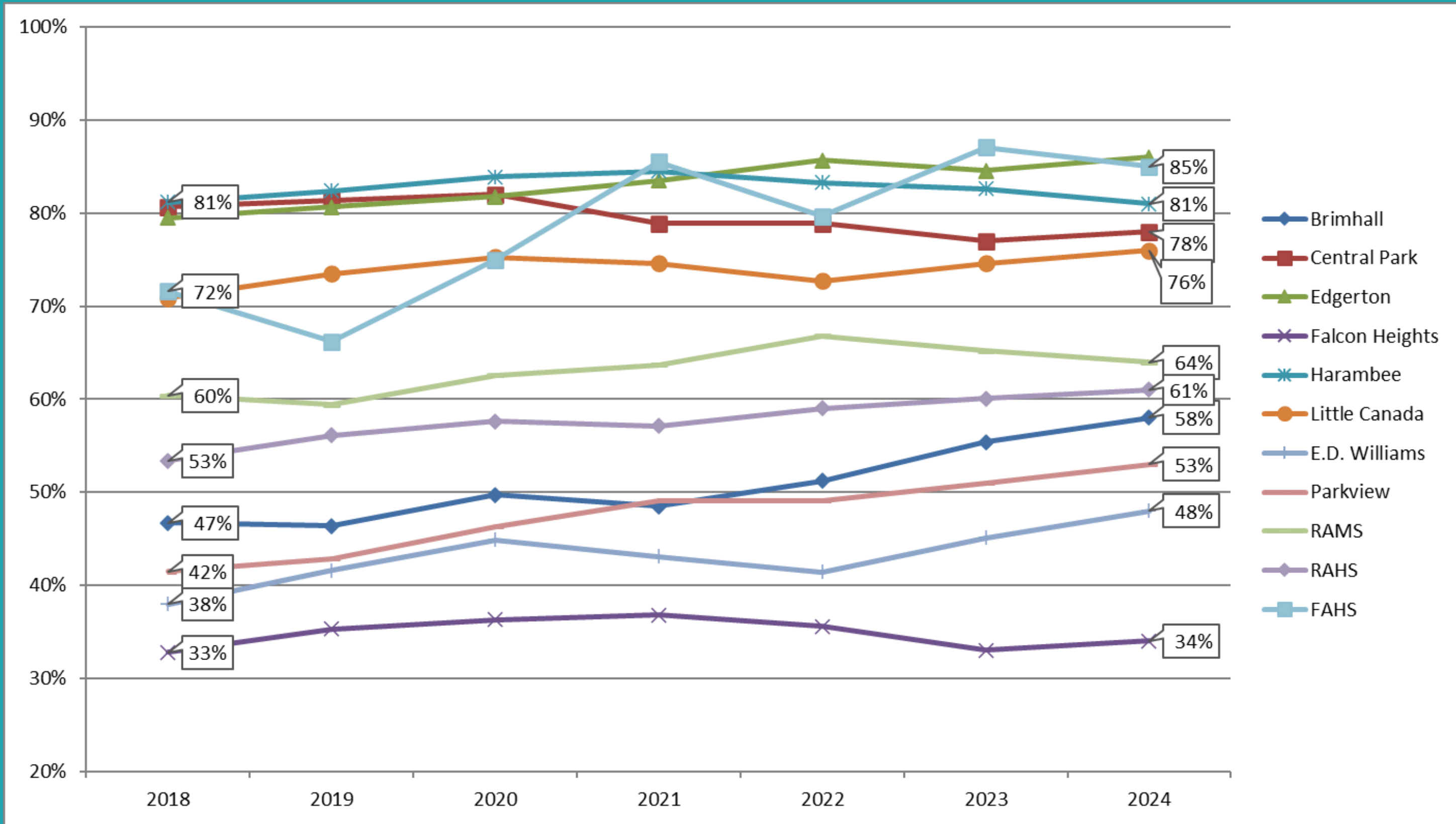
Enrollment Table by Race/Ethnicity

Building	American Indian		Asian		Hispanic		Black		Multi-Racial		White		BIPOC	
	#	%	#	%	#	%	#	%	#	%	#	%	#	%
PreK	0	0.0%	71	25.9%	35	12.8%	60	21.9%	28	10.2%	80	29.2%	194	70.8%
Brimhall	5	0.9%	78	13.7%	57	10.0%	136	23.9%	51	9.0%	242	42.5%	327	57.5%
Central Park	2	0.5%	127	30.9%	69	16.8%	93	22.6%	31	7.5%	89	21.7%	322	78.3%
Edgerton	0	0.0%	178	46.4%	53	13.8%	61	15.9%	37	9.6%	55	14.3%	329	85.7%
Falcon Heights	2	0.5%	21	4.8%	33	7.5%	49	11.1%	44	10.0%	292	66.2%	149	33.8%
Harambee	0	0.0%	62	23.4%	29	10.9%	99	37.4%	24	9.1%	51	19.2%	214	80.8%
Little Canada	5	0.8%	88	13.9%	284	45.0%	68	10.8%	36	5.7%	150	23.8%	481	76.2%
E.D. Williams	2	0.4%	57	12.4%	56	12.2%	67	14.6%	38	8.3%	238	52.0%	220	48.0%
Parkview	0	0.0%	87	12.1%	55	7.6%	150	20.9%	90	12.5%	337	46.9%	382	53.1%
RAMS	2	0.2%	177	20.7%	166	19.4%	124	14.5%	73	8.5%	312	36.5%	542	63.5%
RAHS	4	0.2%	411	18.0%	384	16.9%	389	17.1%	196	8.6%	894	39.2%	1384	60.8%
FAHS	0	0.0%	8	9.9%	29	35.8%	24	29.6%	8	9.9%	12	14.8%	69	85.2%

Race/Ethnicity by Building



BIPOC Students by Building

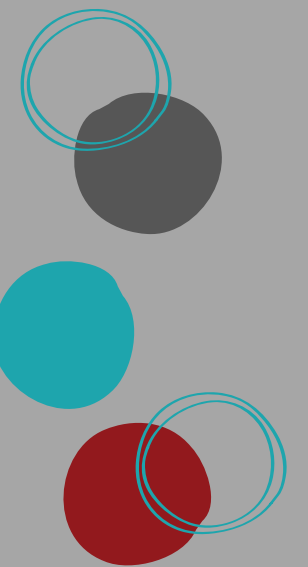
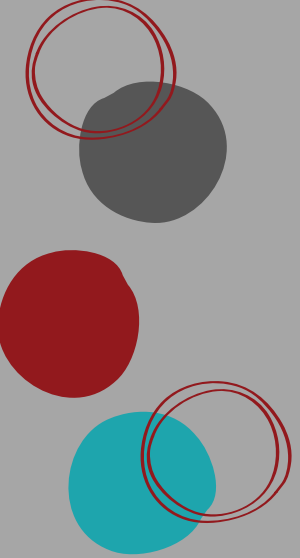


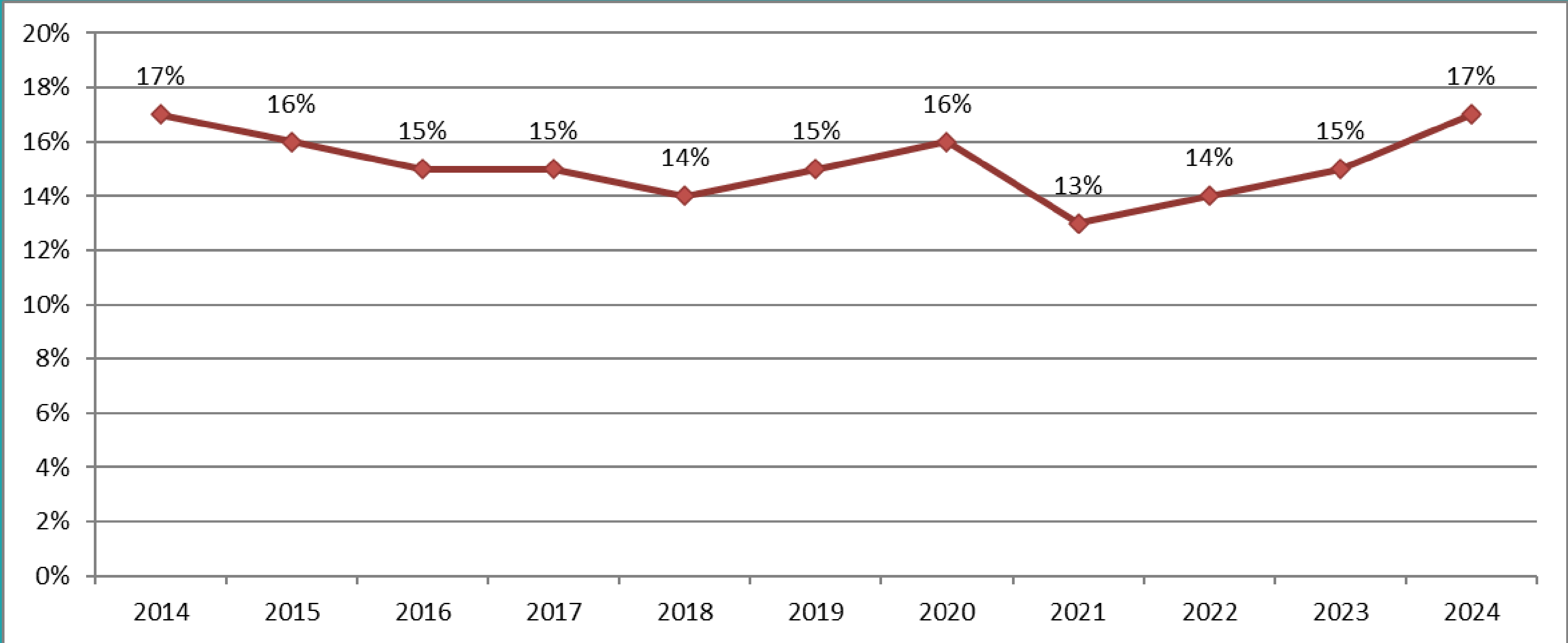
BIPOC Students Trend by Building

District	American Indian		Asian		Native Hawaiian/Pacific Islander		Hispanic		Black		White		Multiracial		Total Enrolled	BIPOC
	#	%	#	%	#	%	#	%	#	%	#	%	#	%	#	%
Austin	59	1.1	613	11.9	166	3.2	1551	30.1	450	8.7	2133	41.4	169	3.3	5,146	58.6
Bloomington	262	2.5	592	5.8	8	0.1	2340	22.7	1839	17.9	4481	43.5	771	7.5	10,294	56.5
Burnsville	163	2.1	494	6.5	12	0.2	2013	26.5	2149	28.3	2224	29.3	534	7	7,594	70.7
Centennial	129	1.9	504	7.4	7	0.1	388	5.7	558	8.2	4874	72	310	4.6	6,772	28
Inver Grove Heights	86	2.5	166	4.7	3	0.1	1016	28.9	452	12.9	1496	42.6	285	8.1	3,510	57.4
Mounds View	125	1.1	1207	10.4	3	0	1264	10.9	1337	11.5	6777	58.3	906	7.8	11,632	41.7
North St. Paul	311	2.9	3059	28.8	8	0	1707	16.1	1932	18.2	2801	26.3	812	7.6	10,633	73.7
Osseo	457	2.2	3336	16.1	4	0	2086	10	5466	26.3	7954	38.3	1469	7.1	20,776	61.7
Robbinsdale	262	2.4	628	5.9	8	0.1	1871	17.4	3244	30.2	3616	33.7	1095	10.2	10,735	66.3
Roseville	189	2.6	1398	19	0	0	1139	15.5	1266	17.2	2835	38.5	528	7.2	7,355	61.5
Spring Lake Park	124	2	544	8.9	13	0.2	1179	19.2	915	14.9	2892	47.1	468	7.6	6,140	52.9
St. Paul	991	3.1	9243	28.8	12	0	4607	14.3	7607	23.7	7261	22.6	2423	7.5	32,145	77.4
West St. Paul	173	3.3	169	3.2	2	0	1462	27.6	689	13	2461	46.5	332	6.3	5,293	53.5
White Bear Lake	137	1.6	725	8.5	6	0.1	708	8.3	572	6.7	5857	68.5	539	6.3	8,549	31.5

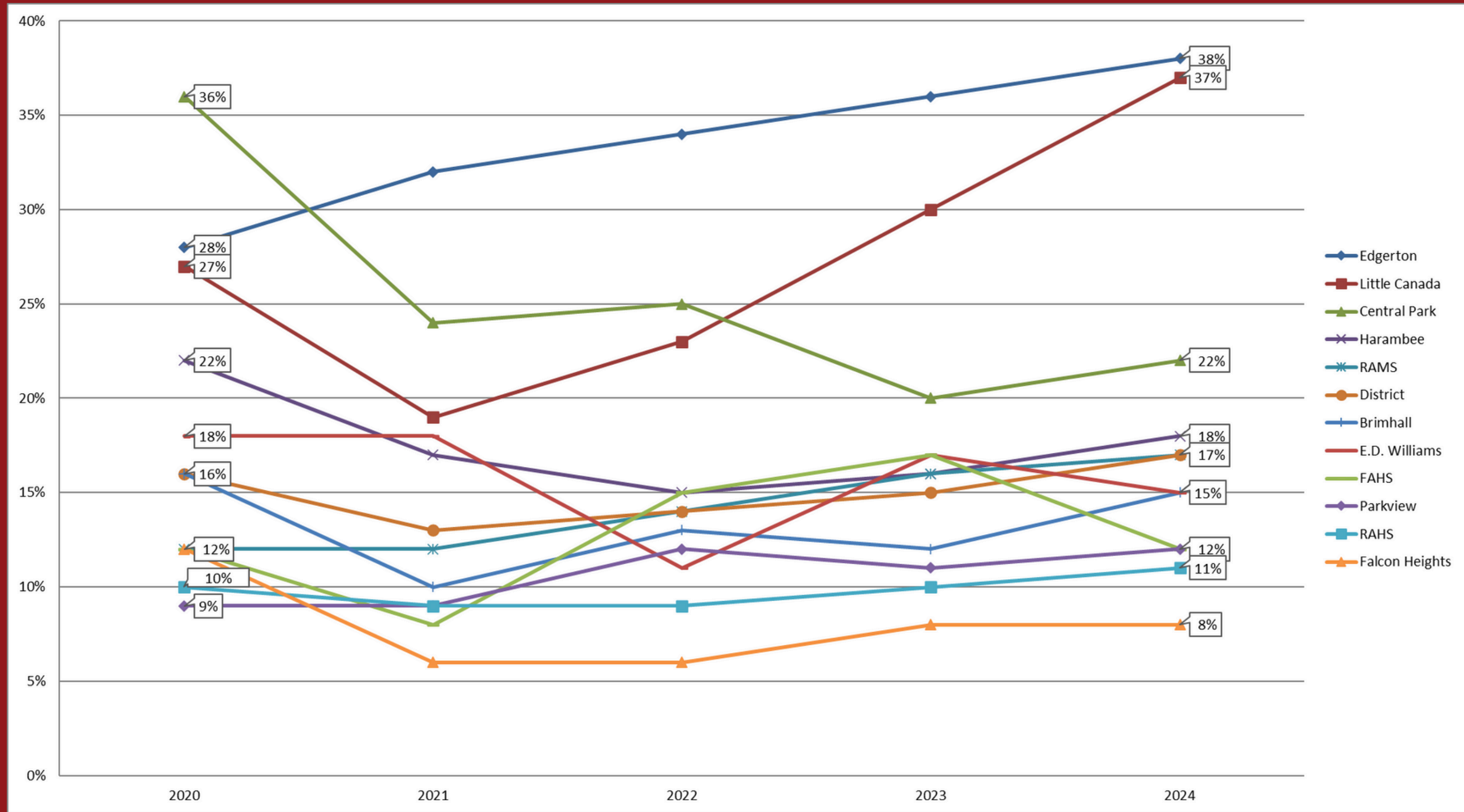
Comparable and Surrounding Districts by Race/Ethnicity

Multilingual Learners

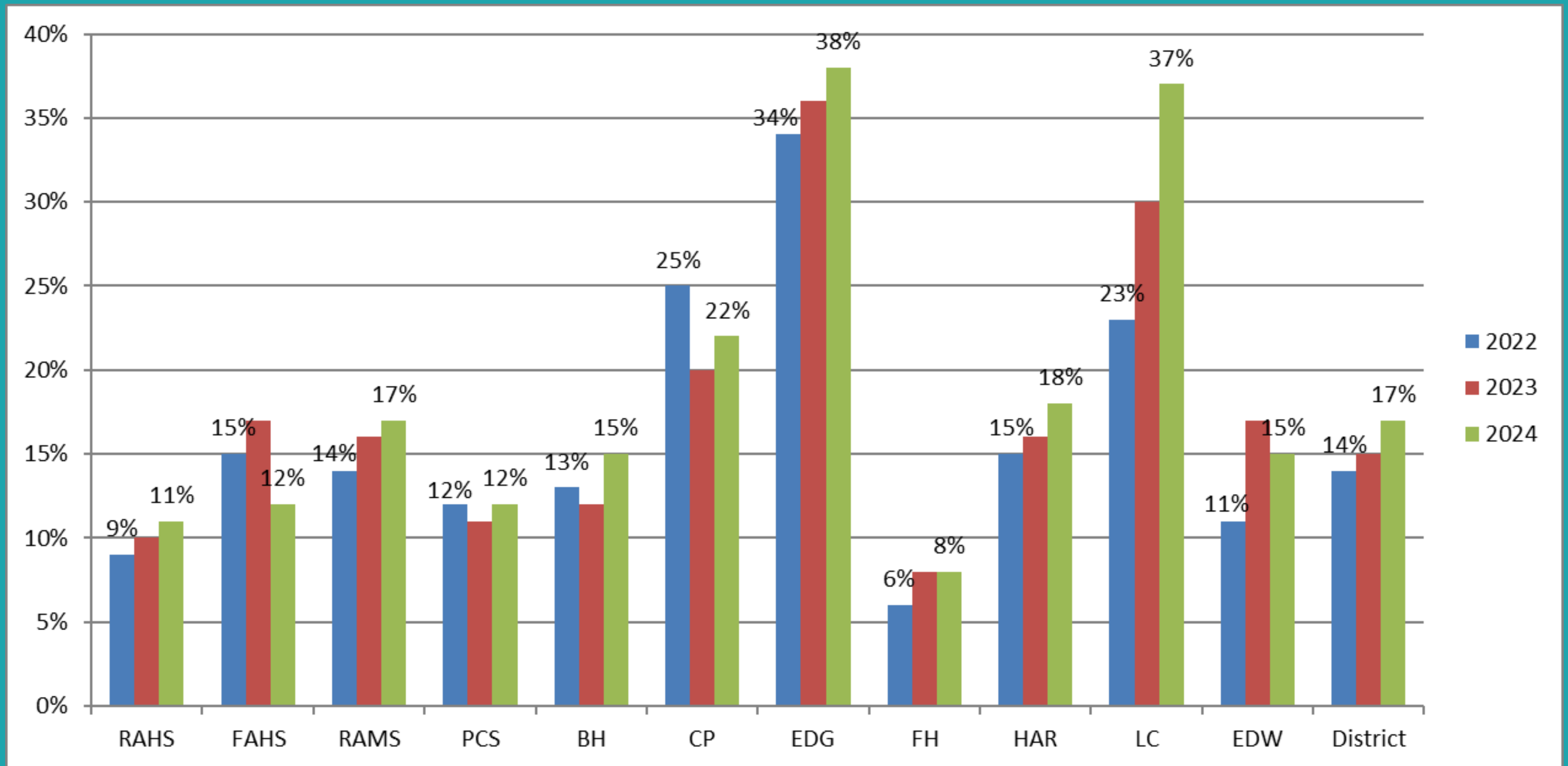




Multilingual Learners District Trend



Multilingual Learners School Trend



Multilingual Learners Enrollment by Building

Roseville Area Schools Students

7498

Multilingual Students

2684

Multilingual Learners Served

1198

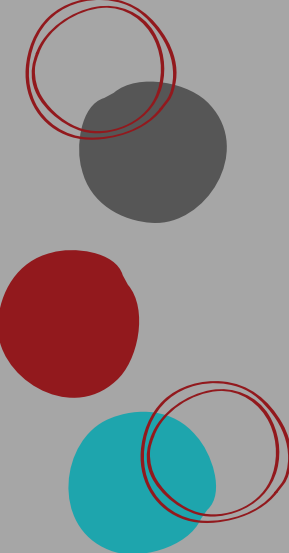
Languages in Roseville Area Schools

Top Ten Home Languages Among MLL Students

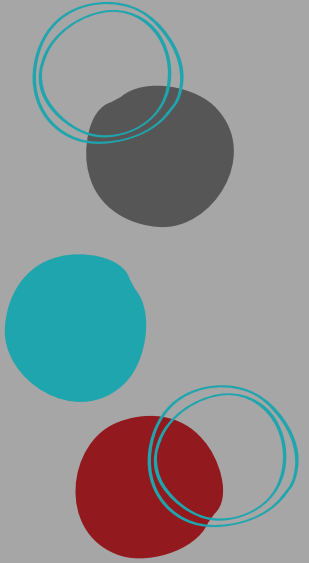
Spanish	Hmong	Somali	Karen	Nepali	Oromo	Vietnamese	Amharic	Arabic	Mandarin
928	401	289	277	189	69	68	54	48	33
12%	6%	4%	4%	3%	1%	1%	1%	1%	1%

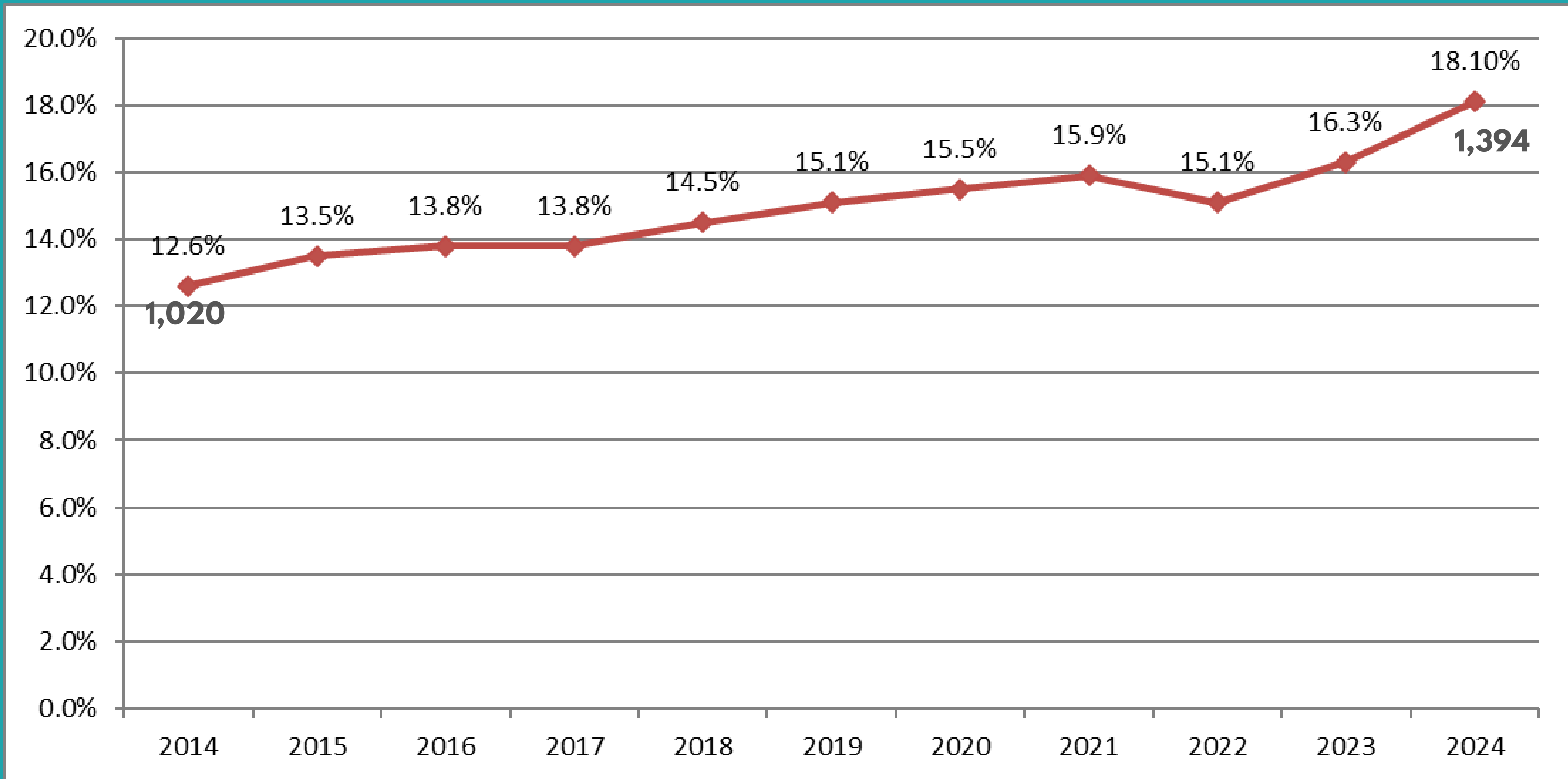
Top Ten Home Languages among MLL Students in the English Language Development Program

Spanish	Hmong	Karen	Somali	Nepali	Oromo	Vietnamese	Amharic	Arabic	Swahili
529	187	134	108	94	29	27	24	19	21
41%	15%	11%	8%	7%	2%	2%	2%	1%	1%

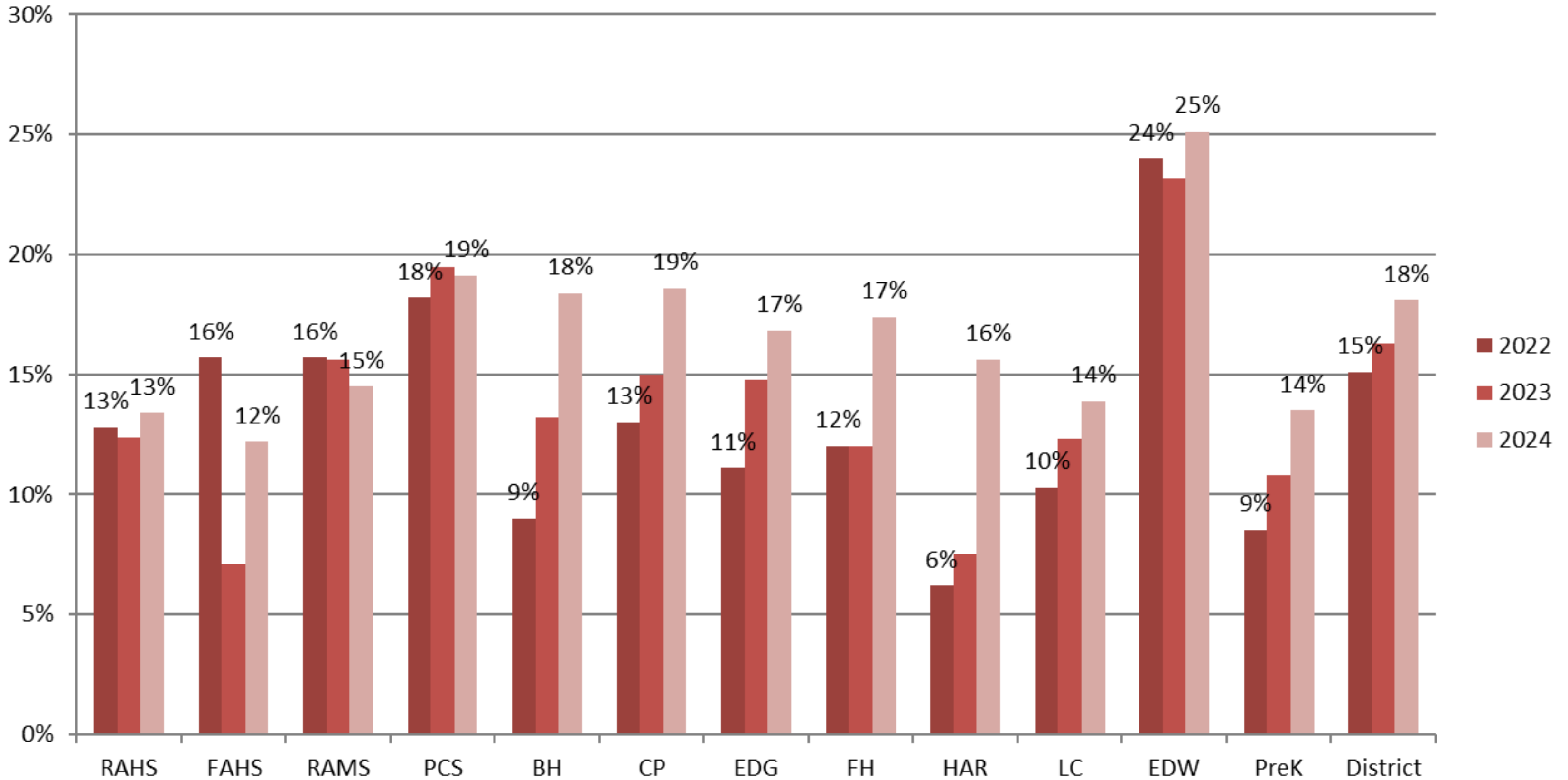


Special Education

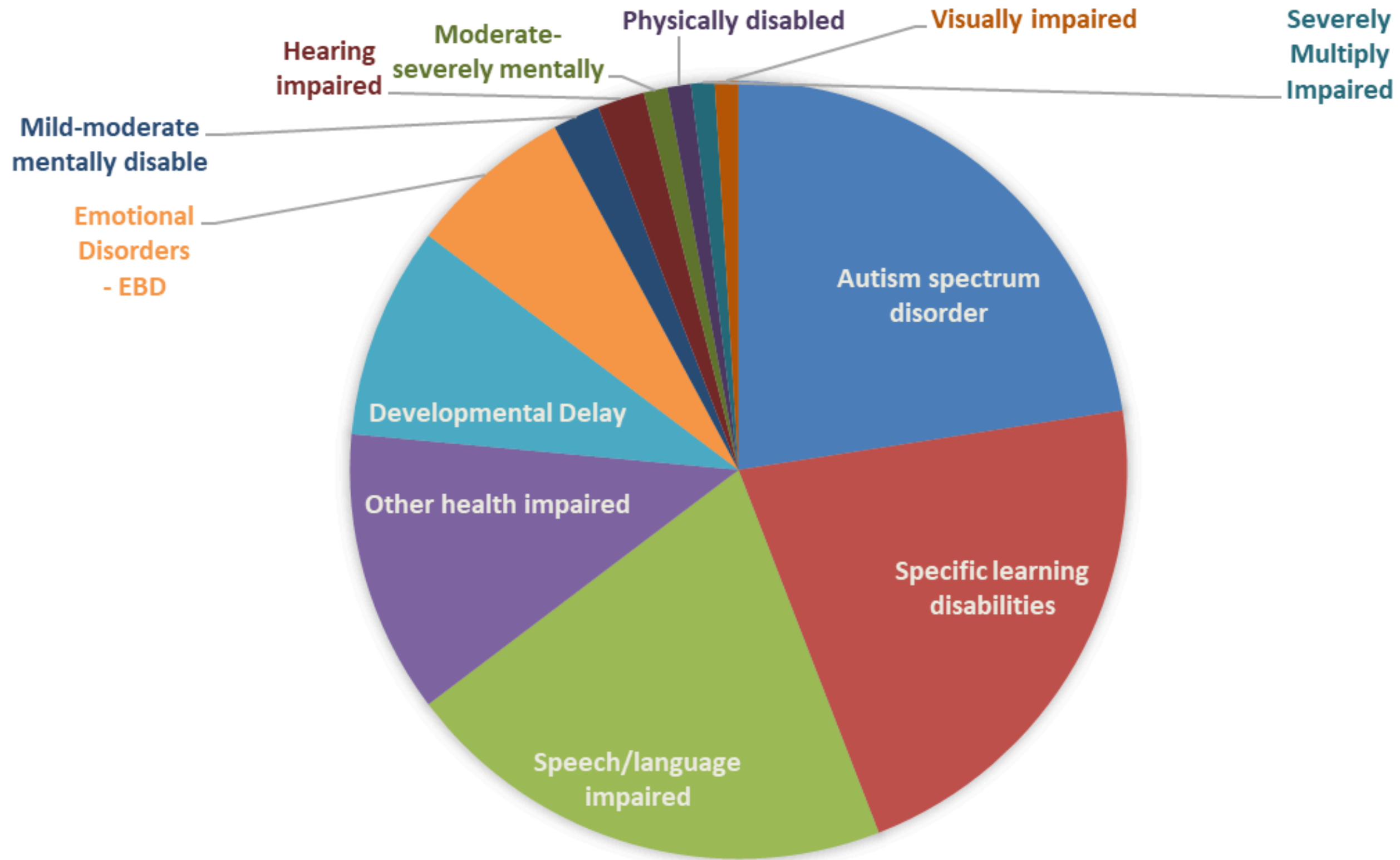




Special Education District Trend



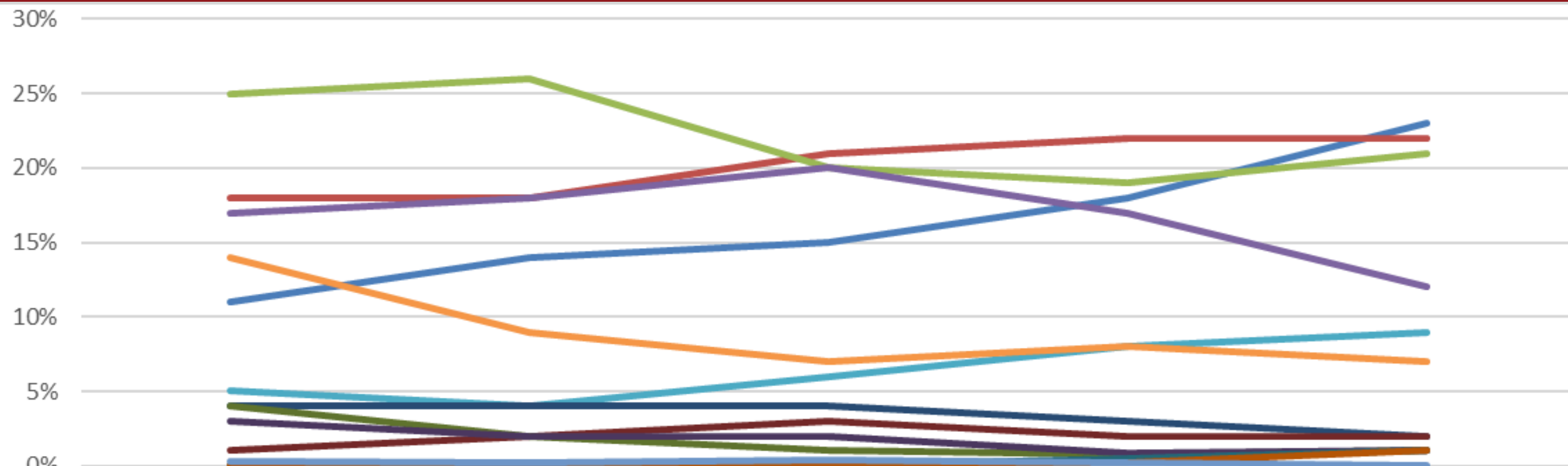
Special Education Enrollment



Special Education Primary Disability

Primary Disability	Percent	Number
Autistic	23.2%	327
Specific learning disabilities	22.2%	313
Speech/language impaired	20.8%	292
Other health impaired	12.2%	171
Developmental Delay	8.4%	118
Emotional Disorders - EBD	6.6%	93
Mild-moderate mentally disabled	2.1%	29
Hearing impaired	1.6%	22
Moderate-severely mentally disabled	1.1%	16
Physically disabled	0.7%	10
Severely Multiply Impaired	0.6%	9
Visually impaired	0.5%	7

Special Education Primary Disability



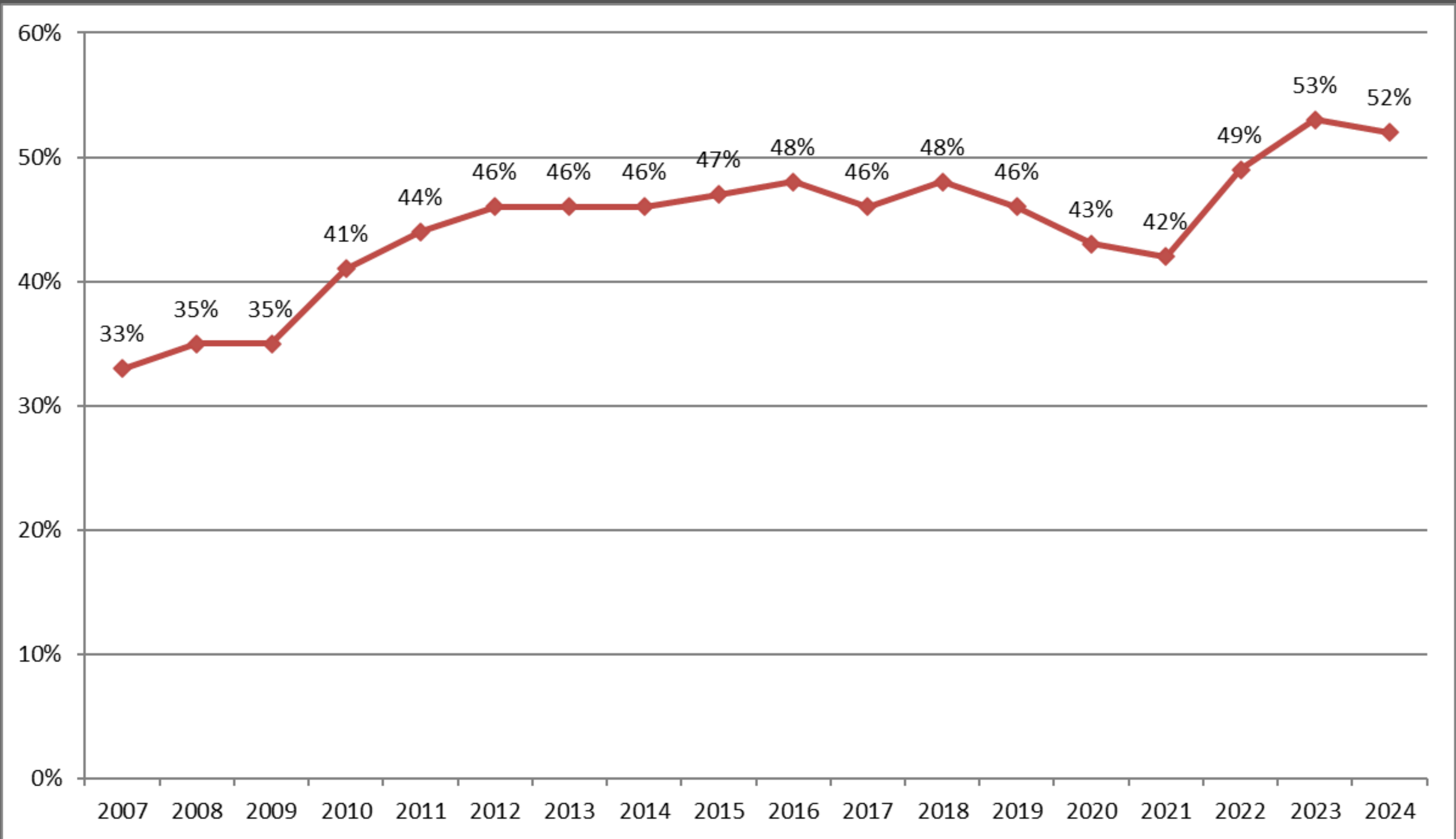
	2004-05	2009-10	2014-15	2019-20	2024-25
Autism spectrum disorder	11%	14%	15%	18%	23%
Specific learning disabilities	18%	18%	21%	22%	22%
Speech/language impaired	25%	26%	20%	19%	21%
Other health impaired	17%	18%	20%	17%	12%
Developmental Delay	5%	4%	6%	8%	9%
Emotional Disorders - EBD	14%	9%	7%	8%	7%
Mild-moderate mentally disable	4%	4%	4%	3%	2%
Hearing impaired	1%	2%	3%	2%	2%
Moderate-severely mentally	4%	2%	1%	0.8%	1%
Physically disabled	3%	2%	2%	0.9%	1%
Severely Multiply Impaired	0%	0%	0%	0.5%	1%
Visually impaired	0%	0%	0%	0.2%	1%
Tramatic brain injury	0.3%	0.2%	0.4%	0.2%	0%

Special Education Primary Disability Trend

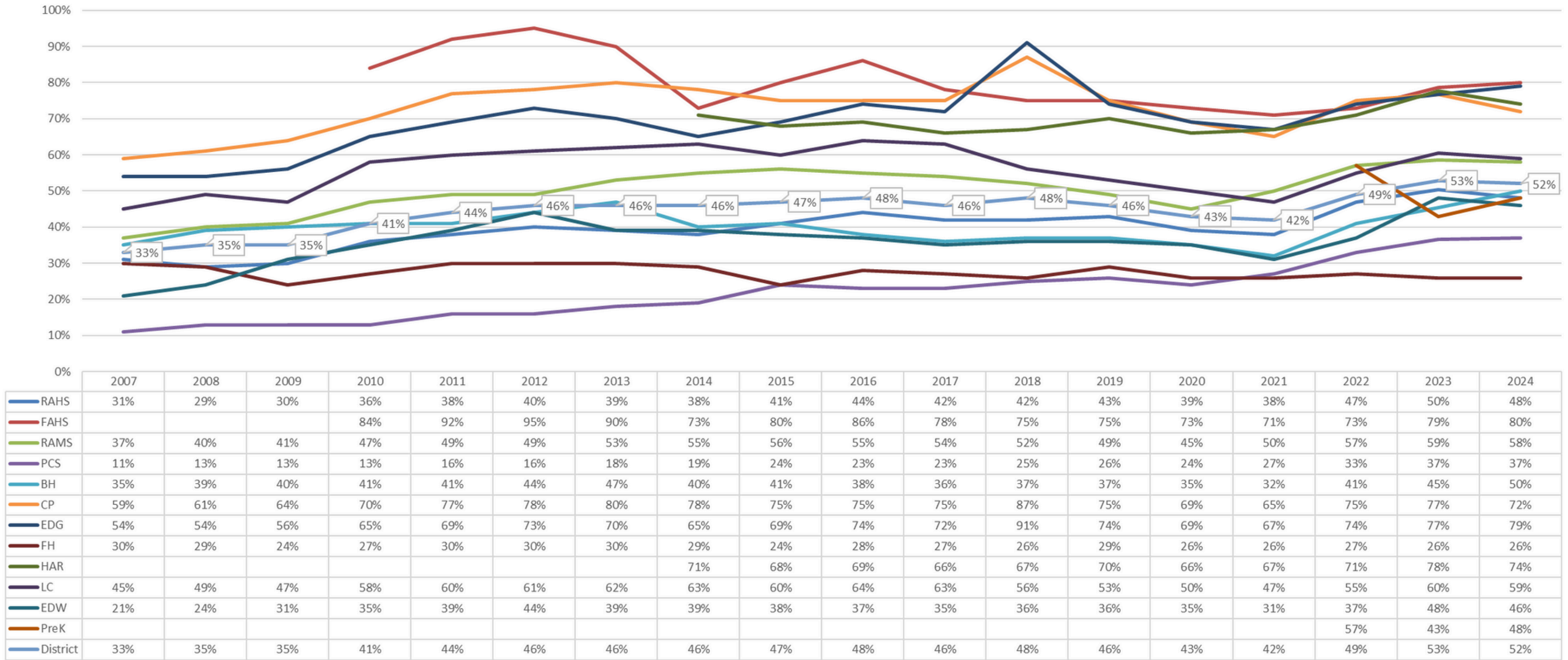


Educational Benefits Participation

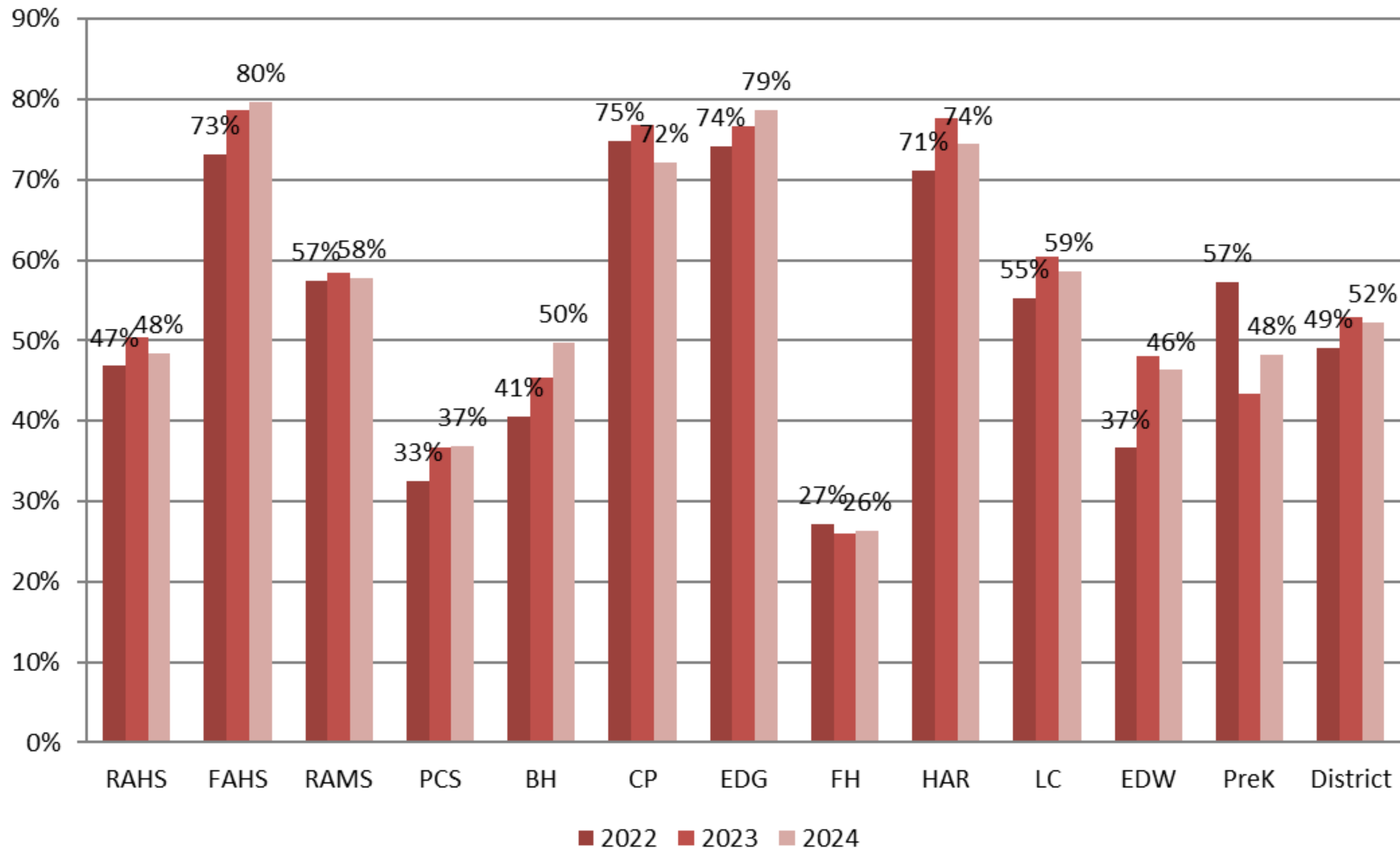




Educational Benefits District Trend



Educational Benefits School Trend



Educational Benefits by School

Questions and Discussion

