

Learning.
Growing.
Leading.
Together.



PREPARING
TOMORROW'S
AG LEADERS
TODAY

2025-26

RED BUD AGRICULTURE DEPARTMENT

ANNUAL REPORT

EDUCATION

LEADERSHIP

OPPORTUNITY

COMMUNITY



CLASSROOM
LEARNING



HANDS-ON
EXPERIENCES



LEADERSHIP
DEVELOPMENT



COMMUNITY
PARTNERSHIPS



AGRICULTURE
EVERY DAY

Investing in Students. Strengthening Agriculture. Building the Future.



Red Bud High School

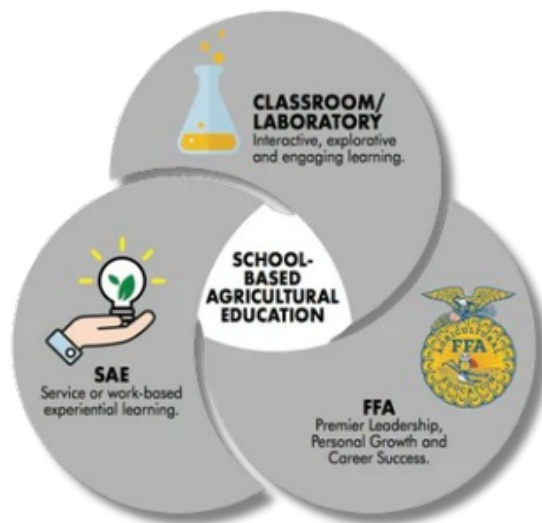
Agriculture Department

Annual Report

2025-2026

Table of Contents

- I. Agricultural Education & Red Bud High School
- II. 2025-2026 Enrollment by Classes
- III. Agricultural Courses offered at RBHS
- IV. Supervised Agricultural Experience Programs (SAEP)
- V. Proficiency Award Winners
- VI. Agricultural Education Program Summary
- VII. Red Bud FFA Officers & Members
- VII. Red Bud FFA Activities & Achievements
- VIII. Community Outreach
- VIII. Summer Activities
- X. Professional Development
- XI. Goals & Objectives for 2024-2025
- XII. RBHS FFA Alumni
- XIII. Advisor Reflection



I Agricultural Education & Red Bud High School

Scope of the Red Bud Agriculture Department

The Red Bud Agriculture Department is located in a rural farming community of approximately 5,000 people in Southern Illinois. Red Bud High School serves students from two public school districts and two parochial feeder schools. The program currently serves approximately 63 FFA members and provides a comprehensive agricultural education experience through classroom instruction, laboratory activities, Supervised Agricultural Experiences (SAEs), and FFA leadership development.

Facilities include a classroom, instructor's office, agricultural mechanics shop, greenhouse complex with headhouse and storage shed, and outdoor raised-bed growing areas. The classroom is equipped with instructional technology, including an Apple TV, poster printer, and Vernier scientific probes to support hands-on learning, scientific investigation, and career exploration.

The agricultural mechanics shop provides students with practical experiences in Diesel Mechanics Technology and Construction. Students develop technical and employability skills through construction projects, equipment operation, maintenance activities, and problem-solving experiences. Shop resources include electric equipment simulators, a CNC wood router, construction tools, and industry-relevant equipment that prepares students for careers in agriculture and skilled trades.

The greenhouse complex serves as a living laboratory where students gain experience in plant science, greenhouse management, and horticulture production. Students grow bedding plants from seed and plugs, maintain houseplants, and manage outdoor raised-bed production areas. The program's annual spring plant sale operates for approximately four weeks and recently generated more than \$15,000 in gross sales. Students are actively involved in production, inventory management, marketing, sales, and customer service throughout the project.

The Agriculture Department is supported through the Red Bud High School Agriculture Education budget, Illinois Agricultural Education Incentive Funding Grant funds, and the OKAW Vocational System. These resources allow the program to maintain current equipment, enhance learning opportunities, and prepare students for post-secondary education, careers, and leadership roles within the agricultural industry.

RBHS Agriculture Education & FFA 2025-26 Goals

- Recruit non-traditional students to take RBHS Ag Ed classes.
- To introduce the CASE AEMT class and to take the CASE training.
- Provide more hands-on learning in all classes.
- To organize the greenhouse to provide a better and more diversified learning environment
- To work with more companies and community leaders to provide learning opportunities for our students.
- Increase FFA participation

2025-26 Accomplishments:

- 5 State Degree Recipients
- Section 22 Premier Chapter & National Finalist
- Introduced many new hands-on activities
- invited non-FFA members to many activities
- Increased Spring greenhouse sales to gross \$15,000
- Worked with 11 companies throughout the year.

II. 2025-2026 Current Enrollment

Course Name	9th Graders	10th Graders	11th graders	12th graders
Agriculture Mechanics Design & Fabrications	0	3	9	4
Horticulture		3	5	1
Introduction to Agriculture	11	5		
Biological Science Application in Agriculture - Plant & Animal	-	9	4	3
Ag Communications			2	
Ag Business Management			16	

2 year Course Enrollment Trend Data

Course Name	2025-26	2025-24
Agriculture Mechanics Design & Fabrications	17	-
Horticulture	9	7
Introduction to Agriculture	16	12
Biological Science Application in Agriculture - Plant & Animal	15	26
Ag Communications	2	7
Ag Business Management	16	8

III. Agriculture Course Descriptions for 2025-26

AGRICULTURE

These courses can satisfy the requirement of 1 credit of fine arts, foreign language, or vocational.

- 1.0 credit of Biological Science Application in Agriculture will apply towards the required 2.0 credits of science for graduation.
- 1.0 credit of Agribusiness Management will satisfy the consumer education requirement for graduation.

Course Title	Grade Level(s)	Prerequisite	Length	Credit
Introduction to Agricultural Industry	9 & 10	None	Year	1
Biological Science Application in Agriculture (Plant/Animal Science) (Science Credit)	10, 11, 12	Introduction to Agricultural Industry	Year	1
Horticultural Science (offered odd years)	10, 11, 12	Introduction to Agriculture Industry or Instructor Approval	Year	1
Agricultural Business Management	11, 12	Introduction to Agricultural Industry	Year	1
Agricultural Equipment Maintenance & Technology	11, 12	Introduction to Agricultural Industry	Year	1
Supervised Agricultural Experience (SAE)	9, 10, 11, 12	Concurrent enrollment in any ag class Or advisor approval	Year	0.25
Agricultural Communication	10, 11, 12	Introduction to Ag or instructor approval	Semester	0.5
Natural Resource Management & Conservation	10, 11, 12	Introduction to Agriculture	Semester	0.5
Greenhouse Management (Offered Even Years)	12	Horticulture or instructor approval	Year	1

INTRODUCTION TO AGRICULTURAL INDUSTRY (18001A001/19000-19001)

This orientation course provides an opportunity for students to learn how the agricultural industry is organized, its major components, the economic influence of agriculture at the state, national, and international levels, and the scope and types of job opportunities in the agricultural field. Students will be introduced to the history, organization, structure, and operations of the National FFA Organization. Basic concepts in animal science, plant science, soil science, horticulture, agribusiness management, agricultural mechanics, hydroponics, and aquaculture science will be presented. Leadership, employability, and computer skills will also be developed. The FFA and Supervised Agricultural Experience Programs (SAEP's) are integral components of this course; students are encouraged to maintain SAEP's and to participate in activities of the FFA organization.

BIOLOGICAL SCIENCE APPLICATIONS IN AGRICULTURE (BSAA - PLANT & ANIMAL SCIENCE)

This course is designed to reinforce and extend students' understanding of science by associating basic scientific principles and concepts with relevant applications in agriculture. Students will examine major phases of plant growth and management in agriculture and the specific biological science concepts that govern management decisions. Topics of study are in the areas of initiating plant growth – cell structure and function, germination, plant sensory mechanisms, enzyme action, absorption, and managing plant growth – photosynthesis, respiration, translocation, metabolism, genetics, taxonomy, and growth regulation. Students will examine major phases of animal agriculture and specific biological science concepts that govern management decisions in the animal industry. Topics of study are in the areas of growth and development of animals – cell structure and function, genetics, taxonomy, embryology, ethology, nutrition, immunity systems, and processing animal products – preservation, fermentation, and pasteurization. The course will be valuable preparation for further education and will increase the relevance of science through the applied setting of agriculture by enhancing literacy in science and the scientific process. Improving computer and workplace skills will be a focus. Participation in FFA student organization activities and Supervised Agricultural Experience (SAE) projects are an integral course component for leadership development, career exploration, and reinforcement of academic concepts.

III. Agriculture Course Descriptions for 2025-26 Cont.

GREENHOUSE MANAGEMENT (18053A001/19017-19018) (Available Even years)

This course focuses on greenhouse management, floral design, and related segments of the horticulture industry. Major units of study include floriculture plant identification, greenhouse structures, and the culture of greenhouse crops. Also included are care and handling of cut flowers, principles of art applied to floral design, and the mechanics of floral design. Agribusiness units will be introduced in merchandising, advertising, sales, and operating a retail floral business. Improving computer and workplace skills will be a focus. Participation in FFA student organization activities and Supervised Agricultural Experience (SAE) projects is an integral course component for leadership development, career exploration and reinforcement of academic concepts.

GREENHOUSE MANAGEMENT (18053A001/19017-19018) (Available Even years)

This course focuses on greenhouse management, floral design, and related segments of the horticulture industry. Major units of study include floriculture plant identification, greenhouse structures, and the culture of greenhouse crops. Also included are care and handling of cut flowers, principles of art applied to floral design, and the mechanics of floral design. Agribusiness units will be introduced in merchandising, advertising, sales, and operating a retail floral business. Improving computer and workplace skills will be a focus. Participation in FFA student organization activities and Supervised Agricultural Experience (SAE) projects is an integral course component for leadership development, career exploration and reinforcement of academic concepts.

Horticultural Production and Management (Available Odd Years)

This advanced course offers instruction in both the greenhouse production and landscape areas of horticulture. Units of study include plant identification, greenhouse management, growing greenhouse crops, landscape design, installation, and maintenance, horticulture mechanics, nursery management, and turf production. Agribusiness units will cover operating a horticultural business, pricing work, advertising, and sales. Improving computer and workplace skills will be a focus. Participation in FFA student organization activities and Supervised Agricultural Experience (SAE) projects is an integral course component for leadership development, career exploration and reinforcement of academic concepts.

AGRICULTURAL BUSINESS MANAGEMENT (18201A001/19006-19007)

This course is designed to develop student skills in the area of advanced agricultural business procedures, establishment of agricultural business, managing the agribusiness, financing the agribusiness, marketing and advertising, and sales techniques and strategies. Information will be taken from the John Deere Farm and Ranch Business Management Textbook. The FFA and SAEP's are integral components of this course; students are encouraged to maintain SAEP's and to participate in the activities of the FFA Organization. This course satisfies the consumer education requirement for graduation.

SUPERVISED AGRICULTURAL EXPERIENCE (SAE) (18997A000/19012)

Courses in Agriculture, Food, and Natural Resources—Independent Study, often conducted with instructors as mentors, enable students to explore topic of interest related to agriculture, food, and natural resources. Independent study courses may serve as an opportunity for students to expand their expertise in a particular application, to explore a topic in greater detail, or to develop more advanced skills. Students must have a current, up-to-date record book for SAE and approval from the advisor to receive credit.

AGRICULTURAL COMMUNICATION (18203A002/19013)

This course introduces the broad field of agricultural communications and provides for the development of knowledge and skill in specific areas related to communications theory and practice. Content includes the meaning and process of communication, the role and history of print and electronic media, legal aspects of agricultural communications, news and feature writing in agriculture, news photography, layout and design, and ethics in agricultural communications. Content will also include web design and broadcast journalism in agriculture. Participation in FFA student organization activities and Supervised Agricultural Experience (SAE) projects are an integral course component for leadership development, career exploration, and reinforcement of academic concepts.

NATURAL RESOURCES MANAGEMENT & CONSERVATION (18504A002/19015-19016)

This course develops management and conservation skills in understanding the connection between agriculture and natural resources. Student knowledge and skills are developed in understanding natural resources and their importance; fish, wildlife, prairies, and forestry management and conservation; and exploring outdoor recreational enterprises. Hunting and fishing as a sport, growing and managing tree forests, and outdoor safety education will be featured. Career exploration will This advanced course offers instruction in both the greenhouse production and landscape areas of horticulture. Units of study include plant identification, greenhouse management, growing greenhouse crops, landscape design, installation, and maintenance, horticulture mechanics, nursery management, and turf production. Agribusiness units will cover operating a horticultural business, pricing work, advertising, and sales. Improving computer and workplace skills will be a focus. Participation in FFA student organization activities and Supervised Agricultural Experience (SAE) projects is an integral course component for leadership development, career exploration and reinforcement of academic concepts. be discussed, including park ranger, game warden, campground manager, forester, conservation officer, wildlife manager, and related occupations. Improving computer and workplace skills will be a focus. Participation in FFA student organization activities and Supervised Agricultural Experience (SAE) projects are an integral course component for leadership development, career exploration, and reinforcement of academic concepts.

III. Agriculture Course Descriptions for 2025-26 Cont.

Agricultural Equipment Maintenance & Technology

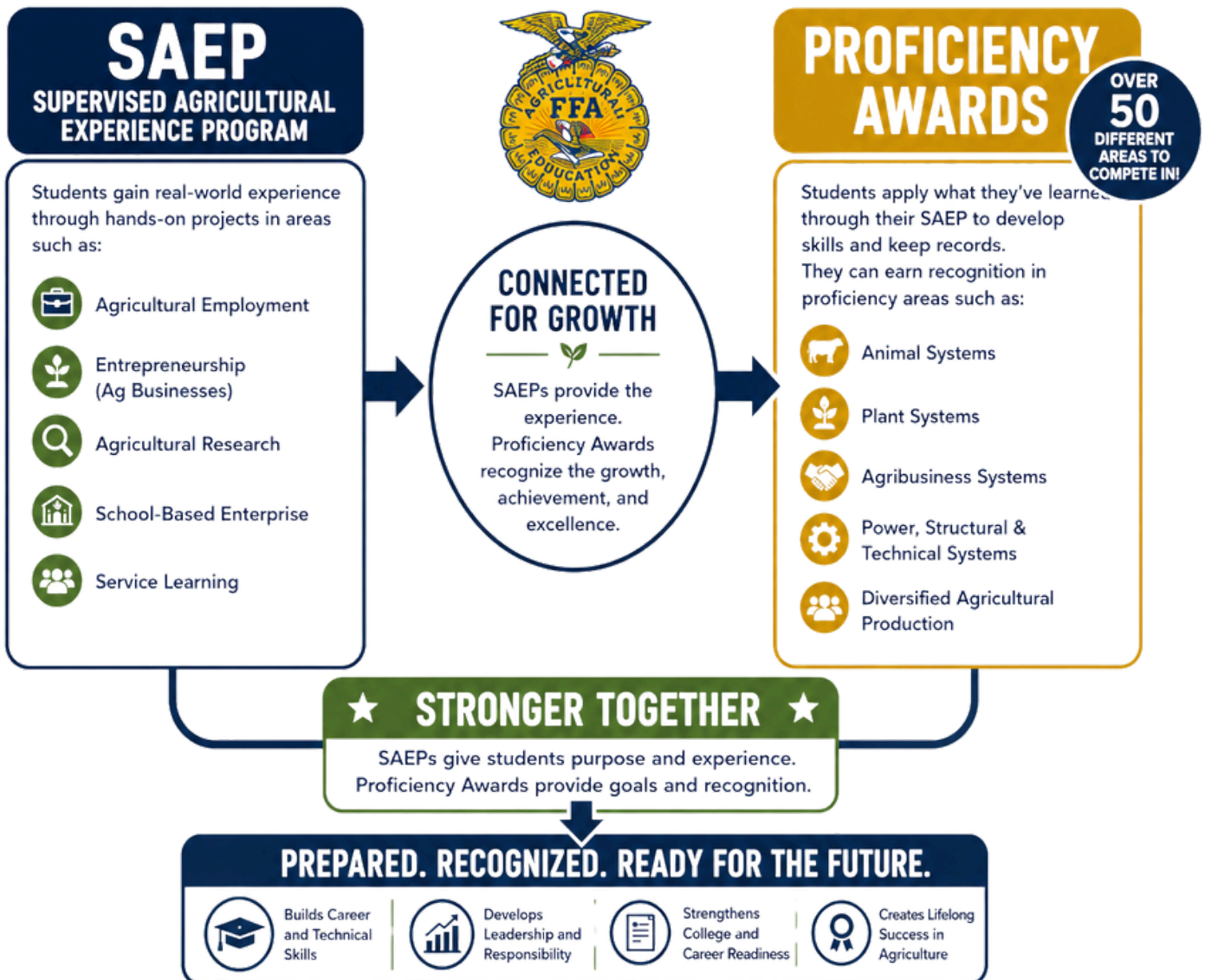
Agricultural Equipment Maintenance and Technology (AEMT) is a capstone-level course designed to provide students with the skills needed to enter the agricultural technician career field. Throughout the course, students develop technological competencies through rigorous hands-on experiences in the classroom. Students will learn how electrical, fluid, diesel, precision, and mechanical systems function. Then they will use their mechanical skills to identify and communicate the cause and correction of equipment failures. The course will expose students to the newest agricultural technologies that support equipment industries while connecting them with future employers. The Agricultural Equipment Maintenance and Technology course includes the following topics: Mechanical System Design, Safety, Drivetrains, Electrical Systems, Precision Agriculture, Hydraulics, Diesel Technology, Machine and Equipment Maintenance, Repair and Work Order Completion, Customer Service

IV. Supervised Agricultural Experience Programs

SAEPs + PROFICIENCY AWARDS

Working Together for Student Success

The combination of hands-on experience through SAEPs and recognition through Proficiency Awards helps students grow, lead, and succeed in agriculture.



V. Supervised Agricultural Experience Participation

Proficiency area	Seniors -2026	Juniors 2027	Sophomore 2028	Freshman 2029
Agriculture Communications Entr.				
Agriculture Communications Placement				
Ag Education Entrepreneurship				
Ag Education Placement		Sage Pensoneau		
Ag Mech Design and Fabrication Ent.				Jackson Pensoneau
Ag Mech Design and Fabrication Placement	Noah Kassing			
Ag Mech Repair and Maintenance Ent.				
Ag Mech Repair and Maintenance Placement			Landon Fausz	
Ag Processing- Ent.		Grace Koester		
Ag Processing- Placement		Walter Gregson		
Ag Sales- Ent.				
Ag Sales Placement				
Ag Service- Ent				Emma Carter
Ag Service- Placement	Paige Demond			
Agriscience Research- Animal Systems				
Agriscience Research- Integrated Systems				
Agriscience Research - Plant Systems				
Beef Production- Entrepreneurship		Amelia Guebert, Holly Gregson		Henry Gregson
Beef Production-Placement		Ty Frees, Taylor Koester, Payton Burmester, Langston Deterding, Walter Gregson		Kenzie Schmoll
Dairy Production-Entrepreneurship				
Dairy Production-Placement		Austin Easton		
Diversified Agricultural Prod -Entr/Plac				
Diversified Crop Production- Entrepreneurship				
Diversified Crop Production-Placement	Noah Kassing			
Diversified Horticulture- Entrepreneurship/Placement				
Diversified Livestock Production Entra/Placement				
Environmental Science and Natural Resources Management - Entra/Place	Paige Demond	Sikeston Hopple		
Equine Science-Entrepreneurship	Emma Carter	Kelsey Kolweier		
Equine Science - Placement				
Fiber & Oil Crop Production Entr/Place	Noah Kassing	Ian Moll	Kade Liefer, Collin Korondo	
Food Service		Josie Schmidt, Sage Pensoneau,	Brooke Hermann, Sydney Kassing	
Forage Production - Entre/Place				Caleb Mudd
Forest Management and Production Entre/place				
Fruit & Nut Production - Entra/Place				
Goat Production Entra/Place		Grace Koester, Amelia Guebert	Maggie Simpson	
Landscape INstallation Entra/Place			Mason Cowell	
Grain Production Entre/Place	Noah Kassing		Kade Liefer, Collin Korondo	
Nursery Operations- Entre/place			Ellie Hahn, Sydney Kassing	

V. Supervised Agricultural Experience Programs Participation

Proficiency area	Seniors -2026	Juniors 2027	Sophomore 2028	Freshman 2029
Outdoor Rec Entre/place		Sikeston Hopple		
Poultry Production entre/place		Talia Carter, Holly Gregson, Josie Schmidt, Payton Burmester		
Safety	Luke Grohmann	Carver Kellerman- Stines		
Service learning Entre/place				
Sheep Production Entre/place	Claire Simpson	Brayden Koester		
Small animal production Entre/place		Joel Flores		
Specialty Animal Production Entre/Place				Will Nitsche
Specialty Crop Production Entre/Place				
Swine Production Entrepreneurship		Holly Gregson		Cletus Simpson, Henry Gregson
Swine Production-Placement		Dalton Dannenberg		
Turf & Landscape Maintenance Entre/place				
Vegetable production- Entre/place				Caleb Mudd & Connor Ellner
Veterinary Science Entre/Place				
Wildlife Production and Management - Entre/place				
SOE				
Art & Communications				
Finance & Business				
Health Science & Technology		Payton Burmester		
Human & Public Services				
INformation Technology				
Manufacturing, Engineering, & trades	Lucas Grohmann			

V. Proficiency Award Winners

Chapter Winners

- Talia Carter- Poultry Production Entrepreneurship
- Dalton Dannenberg- Swine Production Placement
- Ty Frees- Beef Production Placement
- Holly Gregson- Swine Production Entrepreneurship
- Amelia Guebert- Beef Production Entrepreneurship
- Grace Koester- Ag Process Entrepreneurship
- Noah Kassing- Fiber & Oil Crop & Diversified Crop Production, Ag Mechanic Design & Fabrication Placement
- Claire Simpson- Sheep Production Entrepreneurship
- Walter Gregson- Ag Processing Placement
- Emma Carter- Equine Science Entrepreneurship
- Austin Easton- Dairy Placement
- Sage Pensoneau- Food Service Placement
- Kade Liefer- Grain Production Placement
- Maggie Simpson- Goat Production Entrepreneurship
- Lucas Grohmann- Safety Placement
- Caleb Mudd - Vegetable Production Placement
- Payton Burmester- Health Science Technologies SOE

Section 22 Winners

- Dalton Dannenberg- Swine Production P
- Holly Gregson- Swine Production Entrepreneurship
- Emma Carter - Equine Entrepreneurship
- Lucas Grohmann-Safety
- Grace Koester- Agricultural Processing Entrepreneurship
- Payton Burmester- Health Science Services

District 5 Winner

- Dalton Dannenberg- Swine Production Placement
- Payton Burmester- Health Science Technologies SOE

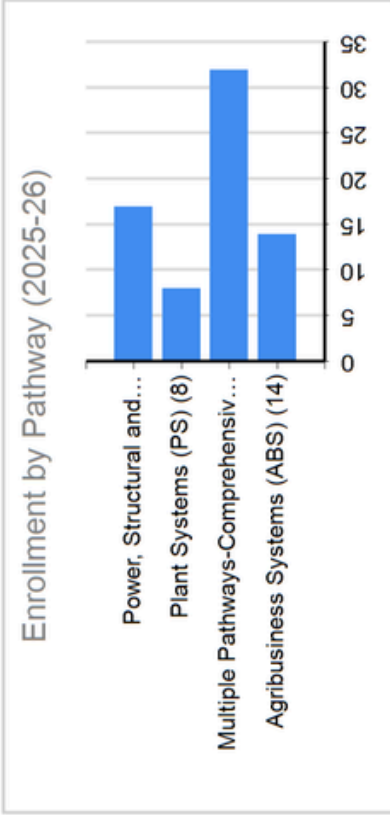
State Honorable Mention

- Dalton Dannenberg- Swine Production Placement
- Payton Burmester- Health Science Services



1. Classroom and Teacher Values 2025-26

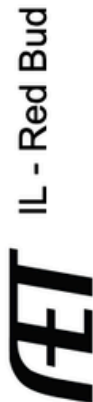
Freshmen Retention: Percentage of Freshmen cohort that completed three years of agriculture education enrollment.	33.3%
Number of Teachers with Classes	1
Students with Classes	61
Average Class Size	13.80
Pathway Enrollment: Agribusiness Systems (ABS)	14
Pathway Enrollment: Multiple Pathways-Comprehensive Curriculum	32
Pathway Enrollment: Plant Systems (PS)	8
Pathway Enrollment: Power, Structural and Technical Systems (PST)	17



2. Leadership Engagement Values 2025-26

FFA Activities: Percentage of different members that participated in at least two local FFA activities.	55.6%
Community Service: Percentage of different members that participated in at least one Community Service activity (All Grades)	23.8%
FFA Members in AET	63
FFA Member Retention: Percentage of Freshmen cohort with at least 3 years of FFA membership	33.3%
Number of Chapter Meetings	7
Number of Calendar Events	76
Number of Calendar Events with PoA Planning	0
Number of Calendar Events with Student Participants	13
Number of student FFA activities journaled	203
Hours of student FFA activities journaled	431
Number of Community Service activities journaled	38
Hours of Community Service activities journaled	125
Volunteer Economic Value (\$25.32)	\$3,172
Percent of students tracking AFNR skills in FFA journal entries	9.5%

Local FFA Engagement	Total FFA Members
55.6%	63
Freshman Retention	Total Calendar Events
33.3%	76
2025-26 FFA Journals	FFA Hours
203	431
Community Service Jrn.	Comm. Srv. Hours
38	125
Volunteerism Impact	
\$3,172	

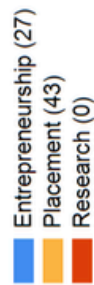


IL - Red Bud

3. SAE Engagement Values 2025-26

Percent of 7th/8th/9th & first-year students with any SAE	63.6%
Percent of continuing 10th/11th/12th students with an Immersion SAE	75.6%
Percent Skill development: Students with SAE skills documented	73.0%
Number of SAE Evaluations by the Teacher	0
Number of SAE Evaluations by a Supervisor/Employer	0
Total number of SAE Projects Managed	73
Entrepreneurship percent of Immersion SAE Projects	38.6%
Placement percent of Immersion SAE Projects	61.4%
Research percent of Immersion SAE Projects	0.0%
Average number of SAE Projects per Student	1.20
Percentage of Students with SAE	73.0%
Total Direct SAE \$ Investment	\$37,105
Total SAE \$ Paid Labor	\$62,422
Total SAE Unpaid Labor Value (\$26.28 shadow wage)	\$718
Total Program SAE Economic Values (\$1.9 Implan)	\$189,102

Immersion SAEs by Type (2025-26)



Local Direct SAE Investment
\$37,105

% 1st Yr Students w/SAE
63.6%

% Continuing Students w/SAE Paid and Unpaid Labor Value
\$63,140

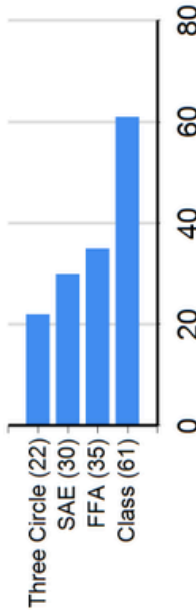
% Tracking Academic Skills Total SAE Economic Value
\$189,102

SAE Evaluations
0

4. Three-Circle Value Summary 2025-26

Number of students with active SAE.	47.6%
Number of students participating in at least 2 local FFA activities.	55.6%
Number of students with SAE, FFA, and enrollment (three circle)	34.9%
Total Economic Impact Value (SAE + Comm. Srv.)	\$192,275
Economic Impact per Teacher	\$192,275
Economic Impact per Student	\$3,152

Three Circle (2025-26)

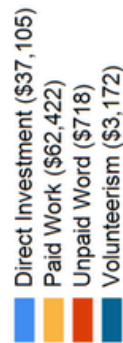


% Students w/ Active SAE 2025-26 Economic Impact
47.6% **\$192,275**

% Students w/ Active FFA Total per Student
55.6% **\$3,152**

% Three Circles Total per Teacher
34.9% **\$192,275**

Economic Impact by Source (2025-26)



VII. Red Bud FFA Officers & Members



PresidentNoah Kassing
 Co-Vice President.....Emma Carter
 Co-Vice President.....Payton Burmester
 SecretaryLucas Grohmann
 TreasurerAustin Easton
 Fundraising Chair.....Talia Carter
 ReporterSage Pensoneau
 SentinelEllie Hahn
 HistorianJosie Schmidt

63 Total FFA Members

Lillian Burke
 Payton Burmester
 Emma Carter
 Talia Carter
 Chase Cowell
 Grant Cowell
 Mason Cowell
 Olivia Crank
 Dalton Dannenberg
 Paige Demond
 Ethan Deterding
 Langston Deterding
 Austin Easton
 Conner Ellner
 Landon Fausz
 Joel Flores
 Ty Frees
 Ehren Ganley
 Hayden Gregson
 Henry Gregson
 Holly Gregson
 Lucas Grohmann
 Zachary Grohmann
 Amelia Guebert
 Ellie Hahn
 Josie Hahn



Brooke Hermann
 Thalia Hinton
 Sikeston Hopple
 Noah Kassing
 Sydney Kassing
 Carver Kellerman-Stines
 Cameran Keys
 Brayden Koester
 Grace Koester
 Taylor Koester
 Kelsey Kolweier
 Colin Korando
 Kade Liefer
 Madelynn Mohr
 Ian Moll
 Caleb Mudd
 Garrett Mudd
 Jack Muench
 William Nitsche

Harlee Papenberg
 Jackson Pensoneau
 Sage Pensoneau
 Addison Salger
 Josephine Schmidt
 Justin Schmoll
 Mackenzie Schmoll
 Brayden Setzer
 Adam Siegfried
 Claire Simpson
 Cletus Simpson
 Maggie Simpson
 Emma Smith
 Hunter Sturgill
 Arianna Thomas
 Ty Voss
 James Wandro
 Aidan Williams

VII. Red Bud FFA Activities & Achievements

Career Development Event & Leadership Development Event

District 5 SIUC Horse Judging - Varsity- 13th

Team: Emma Carter-11th, Talia Carter, Langston Deterding, Amelia Guebert,

Section 22 Horse Judging - Varsity- 3rd Place

Team: Emma Carter- 3rd place, Talia Carter, Langston Deterding, Amelia Guebert,

District 5 SIUC Horse Judging - JV- 15th Place

Grace Koester, Kelsey Kolweier, Josie Schmidt, Maggie Simpson

District 5 SIUC Food Science - Varsity- 6th Place

Team: Talia Carter, 1st place, Holly Gregson, Langston Deterding, Ellie Hahn

District 5 SIUC Food Science - Junior Varsity- 4th Place

Team: Noah Kassing, Brooke Hermann, Amelia Guebert, Paige Demond

District 5 SIUC Food Science - Junior Varsity- 4th Place

Team: Aidan Williams, Will Nitzsche, Thalia Hinton

Section 22 Food Science - Varsity- 4th Place

Team: Talia Carter-1st place, Holly Gregson, Langston Deterding, Ellie Hahn

Section 22 Job Interview - Varsity- 7th Place

Team: Payton Burmester

Section 22 Greenhand Quiz Bowl - Varsity- 8th Place

Team: Ehren Ganley, Thalia Hinton, Kenzie Schmoll, Josie Hahn

Section 22 Agriculture Education - Varsity- 6th Place

Team: Sage Pensoneau

Section 22 Agriculture Education - Junior Varsity- 4th Place

Team: Taylor Koester

IL State Agronomy - Varsity- 30th Place

Team: Amelia Guebert, Will Nitsche, Ehren Ganley, Ellie Hahn

Section 22 Agronomy - Varsity- 8th Place

Team: Noah Kassing, Ellie Hahn, Grace Koester, Payton Burmester, & Amelia Guebert, Kade Liefer,
& Will Nitsche Ehren Ganley

Section 22 Ag Communications - Varsity- 6th Place

Team: Payton Burmester-1st Place, Amelia Guebert, Josie Schmidt, & Ellie Hahn

IL State Ag Communications - Varsity- 8th Place

Team: Payton Burmester, Josie Schmidt, Langston Deterding & Ellie Hahn

IL State Poultry - Varsity- 22nd Place

Team: Talia Carter, Maggie Simpson, Ehren Ganley, Brayden Koester, Will Nitsche

Section 22 - Public Speaking

Emma Carter-Varsity- Prepared - 2nd Place

Payton Burmester - JV Prepared - 1st Place

Talia Carter- Varsity- Extemporaneous - 3rd Place

Will Nitsche- Creed Speaking - 5th Place

Section 22 Horticulture CDE - Varsity - 8th Place

Team: Paige Demond, Ellie Hahn, Sydney Kassing, Ehren Ganley,

VII. Red Bud FFA Activities & Achievements

Career Development Event & Leadership Development Event Cont.

Waterloo FFA Livestock Judging - Varsity - 6th Place

Team: Brayden Koester, Grace Koester, Noah Kassing

Waterloo FFA Livestock Judging - Varsity - 8th Place

Team: Amelia Guebert, Langston Deterding, Josie Schmidt

SIUC Livestock Judging Contest - Varsity -

Team: Langston Deterding, Amelia Guebert, Grace Koester, Payton Burmester, Holly Gregson

SIUC Livestock Judging Contest - JV -

Team: Josie, Schmidt, Kade Liefer, Colin Korando

District 5 Horticulture CDE - Varsity - 12th Place

Team: Brooke Herman, Ellie Hahn, Sydney Kassing, Ehren Ganley

Section 22 Livestock Judging Contest - Varsity -

Langston Deterding, Amelia Guebert, Grace Koester, Payton Burmester, Holly Gregson

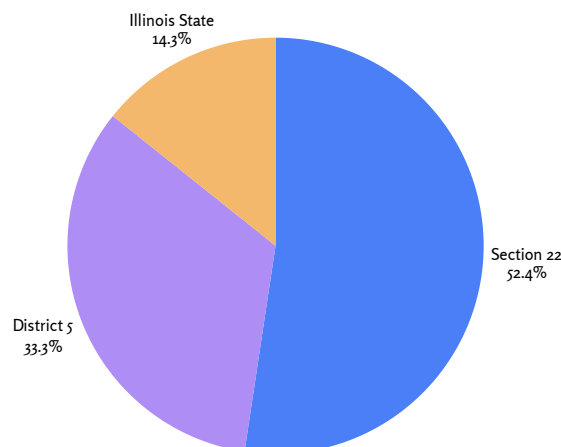
Section 22 VoAg Fair

Payton Burmester, Emma Carter, Dalton Dannenberg, Langston Deterding, Austin Easton, Joel Flores, Walter Gregson, Henry Gregson, Holly Gregson, Lucas Grohmann, Amelia Guebert, Sikeston Hopple, Noah Kassing, Sydney Kassing, Brayden Koester, Grace Koester, Taylor Koester, Kelsey Kolweier, Kade Liefer, Ian Moll, Sage Pensoneau, Addison Salger, Claire Simpson, Cletus Simpson, Maggie Simpson.

Illinois State FFA Degree

Emma Carter, Noah Kassing, Lucas Grohmann, Paige Demond, & Holly Gregson

Career & Leadership Development Level	How contest participated	How many total students
Section 22	11	39
District 5	7	23
Illinois State	3	13
Nationals	0	0



VII. Red Bud FFA Activities & Achievements

Leadership Conferences & Conventions

Elite Conference

Emma Carter, Noah Kassing

STAR Conference

Noah Kassing

SIUC Greenhand Conference

Ehren Ganley, Lily Burke, Henry Gregson, Josie Hahn, Thalia Hinton, Caleb Mudd, Will Nitsche, Harlee Papenberg, Mackenzie Schmoll, Cletus Simpson

Section 22 Leadership Training School

Ehren Ganley, Noah Kassing, Payton Burmester, Taylor Koester, Kelsey Kolweier, Brooke Hermann, Sydney Kassing, Maggie Simpson

BUILD Conference @ ISU

Langston Deterding, Austin Easton, Holly Gregson, Amelia Guebert, Brayden Koester, Grace Koester, Josie Schmitt

Ground Zero Conference @ SIUC

Henry Gregson, Jackson Pensoneau, Brayden Setzer, Will Nitsche, Ehren Ganley

Ag Legislative Day

Langston Deterding, Holly Gregson, Amelia Guebert, Brayden Koester, Grace Koester, Josie Schmidt, Payton Burmester, Talia Carter, Taylor Koester, Sage Pensoneau

National FFA Convention

Brayden Koester, Payton Burmester, Sage Pensoneau, Brooke Hermann, Sydney Kassing, Kade Liefer, Aidan Williams, Noah Kassing, Paige Demond, Lucas Grohmann, Holly Gregson, Grace Koester, Austin Easton, Sikeston Hopple, Addison Salger

2025 Illinois State FFA Convention

Brayden Koester, Payton Burmester, Sage Pensoneau, Brooke Hermann, Sydney Kassing, Kade Liefer, Aidan Williams, Noah Kassing, Paige Demond, Lucas Grohmann, Talia Carter, Claire Simpson

COMMUNITY SERVICE

Ratz & Veteran's Park Cleanup

Payton Burmester, Mason Cowell, Austin Easton, Lucas Grohmann, Noah Kassing, Brayden Koester, Will Nitsche, Sage Pensoneau.

Hot Chocolate Run

Payton Burmester, Emma Carter, Talia Carter, Langston Deterding, Lucas Grohmann, Amelia Guebert, Ellie Hahn, Brooke Hermann, Noah Kassing, Sydney Kassing, Grace Koester, Brayden Koester, Josie Schmidt.

RBES STEM Night

Payton Burmester, Langston Deterding, Amelia Guebert, Grace Koester.

VII. Red Bud FFA Activities & Achievements

Hoops for Harvest **A Special Thank You to Our Farmers**

To our local farmers,

Tonight, our FFA members and varsity basketball players come together to honor the people who have taught us some of the most important life lessons: you, our farmers.

In the FFA, we learn about leadership, perseverance, responsibility, and respect for the land. On the basketball court, we learn about hard work, teamwork, grit, and leaving it all out on the floor. But long before we ever practiced these values in blue jackets or on hardwood, you were living them every day.

Farmers show up early and stay late.

They put in the unseen work that leads to visible results. They push through adversity — weather, markets, long nights, and early mornings — the same grit our athletes bring to the court is the grit our FFA members practice through their SAEs, CDEs, and daily responsibilities.

You model what it means to work as a team: families helping families, neighbors helping neighbors, and generations building something that lasts. You remind us that success is earned, not given — whether it's a strong harvest or a strong season.

Hoops for Harvest exists because the values of agriculture and athletics are deeply connected. The discipline it takes to tend a field is the same discipline it takes to run the final sprint. The courage to try again after a setback is the same courage it takes to pick up the pieces after a tough loss. And the pride in a job well done is shared by every farmer, every FFA member, and every athlete who gives their best.

Tonight, we honor you — not only for feeding our community, but for inspiring our students through your example. Thank you for teaching us resilience, humility, and the importance of putting your heart into your work.

Thank you for all you do for our school, our chapter, and our community.

With gratitude,

The Red Bud FFA Chapter & Red Bud Girls Basketball team



Varsity Player

Brooke Grohmann
Ava Wagner
Addyson Piel
Kendra Ehret
Talia Carter
Nora Rothlisberger
Lilly Minemann
Julia Whelan
Stella Walter
Brooke Hermann
Gracie Rahn
Ella Cowell

Honored Farmers

Denis Grohmann 🐮
Donald Wagner 🐄
Randy Ellner 🌾
Edward Schaefer 🐷
Mark Neary 🐮
Kevin Luthy 🌾
Ronnie Minemann 🐮
Tim Schrader 🌾
Tony Steibel 🌾
Mike Junker 🌾
Justin Rahn 🌾
Leonard Salger 🌾

Senior FFA Members

Noah Kassing
Luke Grohmann
Paige Demond
Adam Siefgried
Zach Grohmann
Addison Salger
Emma Carter

Honored Farmers

Robert, Diane & Kolin
Schoenbeck 🌾
Nick Grohmann 🐷
Leslie & Freddie
Grohmann 🐷
Logan Cowell 🌾
Frederick Grohmann 🐷
Jeff Schlueter 🐮
Jeff Siegfried 🌾



Pork Producer



Dairy Producer



Beef Producer



Grain Producer

VII. Red Bud FFA Activities & Achievements

Fundraising

Citrus Fruit Sales

Lilly Burke, Payton Burmester, Talia Carter, Olivia Crank, Dalton Dannenberg, Langston Deterding, Austin Easton, Joel Flores, Ehren Ganley, Amelia Guebert, Ellie Hahn, Noah Kassing, Sydney Kassing, Grace Koester, Colin Korando, Kade Liefer, Ian Moll, Garrett Mudd, Will Nitsche, Sage Pensoneau, Josie Schmidt, Cletus Simpson, Maggie Simpson.

Strawberry Sales

Payton Burmester, Dalton Dannenberg, Langston Deterding, Joel Flores, Amelia Guebert, Ellie Hahn, Josie Hahn, Sydney Kassing, Brayden Koester, Colin Korando, Kade Liefer, Ian Moll, Josie Schmidt, Emma Smith, Ty Voss.

Fish Fry Fundraiser

Payton Burmester, Emma Carter, Talia Carter, Dalton Dannenberg, Langston Deterding, Austin Easton, Ehren Ganley, Holly Gregson, Lucas Grohmann, Amelia Guebert, Ellie Hahn, Josie Hahn, Noah Kassing, Sydney Kassing, Grace Koester, Brayden Koester, Colin Korando, Kade Liefer, Caleb Mudd, Will Nitzsche, Sage Pensoneau, Josie Schmidt, Maggie Simpson, Ty Voss, Aidan Williams.

Summer Activities 2025

Summer Meeting @ Ruma Park with the Alumni

Emma Carter, Talia Carter, Holly Gregson, Walter Gregson, Lucas Grohmann, Ellie Hahn, Sikeston Hopple, Sydney Kassing, Kade Liefer, Colin Korando, Brooke Hermann, Jackson Pensoneau, Sage Pensoneau, Josie Schmidt, Maggie Simpson, Cletus Simpson, Adam Siegfried.

Monroe County Fair FFA Fun Night

Payton Burmester, Emma Carter, Talia Carter, Dalton Dannenberg, Austin Easton, Holly Gregson, Walter Gregson, Lucas Grohmann, Amelia Guebert, Ellie Hahn, Brooke Hermann, Noah Kassing, Grace Koester, Brayden Koester, Colin Korando, Kade Liefer, Paige Demond, Emma Smith, Justin Schmoll, Sage Pensoneau, Maggie Simpson, Aidan Williams.

Scooping Ice Cream @ The Grand for the Randolph Co. Farm Bureau

Payton Burmester, Paige Demond, Austin Easton, Lucas Grohmann, Amelia Guebert, Ellie Hahn, Noah Kassing, Sydney Kassing, Grace Koester, Colin Korando, Kade Liefer, Caleb Mudd, Sage Pensoneau, Josie Schmidt.

Working the Pork Producer Stand at Monroe Count Fair

VIII. Community Out Reach

One of the greatest strengths of agricultural education is the support we receive from our community and industry partners. These relationships allow students to see agriculture beyond the classroom walls, connect with professionals, and gain exposure to careers and opportunities they may not otherwise experience. We are grateful for the organizations that invest their time and expertise in our students, and we are always looking for ways to expand our network and create new partnerships that benefit the Red Bud Agriculture Education Program.

Beneficial Breakfast presenters:

- Darla Holman-Design Fitness - “Breakfast like a Boss”
- Nick Kassing -Midland Bank- “Check yourself”
- Steve Stroh-Country Financial - ‘Insure What Matters’
- Connor Guebert - Edward Jones - ‘Stock up’
- Shirleen Schaefer - Sewing Corner - ‘Stitch it & Fix it’
- Karen Whelan-Realtor- ‘Rent Smart’

Farm Credit Illinois

We were fortunate to host representatives from Farm Credit Illinois during our Ag Business Management course. Laura DuFrenne, Vice President of Lending, and Ron Lintker, Vice President of Lending, shared their expertise on the importance of agricultural cooperatives and the role they play in supporting producers and rural communities. Their real-world experiences helped students connect classroom concepts to the agricultural industry.

FS Outreach Program

Through the FS Outreach Program, employees from the Baldwin facility visited our students during a half day of school to discuss precision agriculture technologies, career opportunities within the cooperative system, and the evolving needs of the agriculture industry. Students also had the opportunity to interact with equipment and technology used in modern agriculture. Special thanks to Sarah Birchler for organizing this event and coordinating a diverse group of FS professionals to share their knowledge and experiences.

Red Bud Chamber of Commerce and Red Bud City Hall

Our partnership with the Red Bud Chamber of Commerce and Red Bud City Hall through the Hot Chocolate Fun Run continues to provide valuable leadership and career-readiness experiences for students. Through planning and organizing the event, students gain firsthand exposure to the process of obtaining approvals through city meetings, the importance of meeting deadlines, and the attention to detail required to successfully coordinate a community event.

Randolph County Farm Bureau

Students had the opportunity to volunteer at The Grand through the Randolph County Farm Bureau's ice cream program. While serving customers, students developed valuable customer service and retail skills while interacting with people from a variety of backgrounds and locations. This experience helped students strengthen their communication skills, professionalism, and appreciation for the diverse communities that agriculture serves.

VIII. Summer Activities -2026

June

- 2 Greenhouse Maintenance and throughout the summer
- 9-11 Illinois State FFA Convention @ Springfield
- 16-18 Illinois Association of Vocational Agriculture Teacher Conference @ Peoria
- 23. Wildlife Curriculum Professional Development @ Mt. Vernon
- 30 Presenting at the Red Bud Library for their 'Planting a Seed to Read' Summer Theme

July

- 2 Officer Meeting
- 6 Summer Meeting @ Ruma Park
- 19-26 Monroe County Fair
- 26 Monroe County FFA Fun Night
- 29-30 Officer Retreat

August

- 6-7 Scoop Ice Cream for the Randolph County Farm Bureau

X. Goals and Objectives for 2026-2027

- **Participate in the Illinois FFA Foundation**
 - This organization provides funding for multiple programs to keep the Illinois FFA bottom line healthy, which in turn helps provide opportunities for our students.
- **Continue to grow my knowledge for AEMT**
 - Provide strong, mechanical hands-on learning in this class.
- **Continue to grow our numbers in Ag Ed at RBHS**
 - Highlight the wide range of career opportunities within agriculture and help students understand the industry's impact, including the fact that one in every ten U.S. jobs is connected to agriculture.
- **Strengthen Foundational SAE experiences for all students and provide dedicated time during Monday Memos for students to maintain and update their SAE records.**
- **Elevate the Ag Ed curriculum with more rigor without losing hands-on opportunities.**
 - Use the Vernier lab sensor equipment to measure results
- **Continue building partnerships within the Red Bud community and provide service opportunities that allow students to give back and make a positive impact.**
- **Increase the awareness of the importance of being active in the three circles of agricultural education & serving our community.**
- **To provide dual credit classes for Ag Business Management & Horticulture through SWIC.**

XI. Profession Organizations & Professional Development

Professional Development Meetings and Conferences designed to improve classroom instruction or overall

Agriculture Department activities:

• Fall Agriculture Teachers Meeting	Breese Central	August
• Winter Ag Teachers meeting	Freeburg	January
• Ground Zero In-service	SIUC	January
• IAVAT Conference and In-service	Peoria, IL	June
• National FFA Convention	Indianapolis, IN.	October
• Illinois FFA Convention	Springfield, IL	June

Professional Organization Memberships and School Committees

- Illinois Association of Vocational Agriculture Teachers
- National Association of Agricultural Educators
- Illinois Association of Career and Technical Educators
- Association of Career and Technical Educators
- National Education Association
- Illinois Education Association
- CASE Instructor

Professional Development of 2025-2026

Section 22 IAVAT - Website & AET Training

This is the professional development for Section teachers to learn more about the new website and AET.

Grilling 101

Illinois Beef is firing up the grill to present a hands-on grilling demonstration, coupled with the basics of beef! From all the do's and don'ts of grilling beef, to prep tips, beef cuts and pairings, and even beef and meat safety, this Grilling 101 course covers it.

BUILD- The Aloe Vera Workshop

It's November, are you feeling the burn? Have you felt like you are spending more and more time closer to the flame? This workshop is intended to help you locate the SPF, burn cream, and aloe to help you get a glowing tan without burning up in this career.

Section 22 Biehl Farms Tour

We will do a tour and go over a nutrition classroom activity.

Illinois Association of Vocational Agriculture Teachers

Are you an agriculture teacher ready to empower your students with skills for the future? The world of agriculture is rapidly evolving, with technology like precision farming, automation, and data analysis becoming more critical every day. This dynamic, hands-on workshop will show you how to easily integrate essential computer science concepts into your existing curriculum using the versatile micro:bit and the intuitive Microsoft MakeCode app. No prior coding experience is needed! You'll discover how to bring your ideas to life with simple block-based coding by utilizing a multitude of built in sensors building projects that connect directly to your students' world. Leave feeling confident and equipped with ready-to-use lessons to ignite your students' passion for innovation and prepare them for the agricultural landscape of tomorrow.

IAVAT Conf: Tour Caterpillar's Assembly of Track Type Tractors.

90-minute tour where the assembly of track-type tractors D6, D7R II, D9, D10, D11 are all made!

From Lures to Nest Boxes: Engaging Wildlife Lessons

This professional development session will highlight a variety of hands-on projects and instructional activities that agriculture teachers can implement in Natural Resources or Wildlife Management courses. Participants will explore practical classroom and shop-based lessons that help students connect wildlife science with real-world applications. Topics will include building fishing lures, scoring deer antlers, duck call making, soil texture labs, and constructing wood duck nesting boxes. The session will also discuss ideas for student research projects and experiential learning opportunities such as organizing a class fishing trip. Teachers will leave with practical project ideas, instructional tips, and resources they can immediately use to increase student engagement in their natural resources curriculum.

XII. Red Bud FFA Alumni

The Red Bud FFA Alumni & Supporters is a group of former FFA members, parents, community members, and agricultural advocates dedicated to supporting the success of the Red Bud FFA Chapter and its students. Through fundraising, volunteer service, mentorship, and advocacy, the Alumni helps provide opportunities that enhance agricultural education and leadership development.

The organization supports student participation in leadership conferences, career development events, state and national conventions, Supervised Agricultural Experience (SAE) projects, scholarships, chapter activities, and community service initiatives. By investing their time, talents, and resources, Red Bud FFA Alumni members help ensure that current and future students have access to meaningful experiences that prepare them for success in agriculture, leadership, and life.

Red Bud FFA Alumni Members

Joshua Bremer	Jenny Prange
Kyle Cowell	Josh Reinhardt
Daniel Crook	Bryan Rohlfling
Ronald Deterding	Justin Roy
Mark Guebert	Brian Ruez
Derrick Gregson	Erin Salger
Caleb Grohmann	Darren Salger
Curtis Harms	Jason Salger
Clifford Harms	Justin Salger
Bryan Heck	Michael Salger
Bernard Heck	John Schaefer
Gregory Henry	Eric Schaefer
Keith Juelfs	Kody Schoenbeck
Kayla Juelfs	Kolan Schoenbeck
Nick Kassing	Diane Schoenbeck
Karl Langrehr	Douglas Stamm
Kevin Langrehr	Edward Stadter
Kyle Langrehr	Ryan Stolte
Timothy Luebkmann	Stanley Voss
Lisa Luebkmann	Craig Whelan
Kevin Muench	Joshua Whelan
Matthew Moeller	Greg Wiegand
Jared Piel	

Officers:

President: Nick Kassing

Secretary/Treasurer: Jason Salger



Accomplishments

- **A new storage shed for the greenhouse**
 - Purchased a new storage shed for the greenhouse to improve organization, protect equipment and supplies, and create a more efficient learning environment for students.
- **Paid for hotel expenses for students to attend the National FFA Convention, Ground Zero, and Elite Conference**
 - Provided lodging support for students attending leadership and career development events, helping reduce financial barriers and allowing more members to take advantage of these life-changing opportunities.
- **Fried all the fish for the Fish Fry**
 - Volunteered time and labor to prepare and serve fish for the annual Fish Fry, helping make one of the chapter's largest fundraising and community engagement events a success.
- **Provided two \$1,000 scholarships to seniors**
 - Awarded two \$1,000 scholarships to graduating seniors to support their continued education and recognize their dedication to agriculture, FFA, and academic achievement.
- **Rewarded five FFA members who earned their Illinois State Degree with \$500 each**
 - Recognized five members who achieved the Illinois State FFA Degree by providing a \$500 award to celebrate their years of commitment, leadership, and SAE success.
- **Rewarded seven FFA members with \$100 for outstanding SAEs**
 - Presented seven members with \$100 awards in recognition of their outstanding Supervised Agricultural Experiences, encouraging entrepreneurship, skill development, and career readiness.

XIII. Advisor Reflection

As I sit on my front porch during summer break and reflect on this past year, I can say with certainty that it was a good one. Last year was a season of healing, rebuilding, and overcoming challenges. As a result, our students experienced success. To continue raising the bar, this year I focused on providing opportunities for students while also emphasizing accountability among students, members, and FFA officers. Helping students understand the importance of being accountable for their choices—and recognizing how those choices impact others—has been a major focus.

This past officer team did an outstanding job, but they also learned that leadership comes with responsibility, accountability, and high standards. Sometimes those lessons were learned the hard way, but with guidance and support, they rose to the challenge. As a result, this officer team and our chapter members continued to set new standards of excellence and achieved milestones never before accomplished in the history of Red Bud FFA. Most notably, this was the first year that Red Bud FFA earned the Section 22 Premier Chapter Award.

Our officer team also introduced several new initiatives that have already made a positive impact. One example is Hoops for Harvest, where senior FFA members and members of the girls' varsity basketball team recognize a farmer who has made a meaningful impact on their lives. Another is Beneficial Breakfasts, where community members join us each month to share advice, experiences, and skills with students while enjoying breakfast together. We also saw continued growth and success with the Hot Chocolate Fun Run. All proceeds from this event directly support Santa's Village and help keep this special community event free for local families.

While teaching plant and animal science has always been in my wheelhouse, teaching shop classes is something I have not done in many years. Even when I previously taught shop, my focus was primarily welding. Throughout most of my career, I have worked in two-teacher programs where my colleague brought strong shop and mechanics expertise to the department. Because of that, I wanted to introduce a class that not only fulfilled a need at RBHS but also challenged me as an educator. I am excited to continue putting my own spin on the CASE AEMT curriculum. After teaching the course for a year, I have identified areas where students need additional foundational skills before certain lessons. I have many goals for the future of this program and look forward to continuing its growth.

I cannot finish this reflection without recognizing the success of our greenhouse program. This spring, we grossed over \$15,000 in sales. The support we receive from our community continues to be incredible. Through this program, students have learned how to grow plants from seed, plugs, and cuttings. They have learned to select marketable varieties, diagnose insect issues, identify fertilizer deficiencies, and develop problem-solving skills that mirror real-world horticulture operations. The greenhouse continues to be one of the strongest examples of hands-on learning in our program.

As I look ahead, I am excited to see what the future holds for the RBHS Agriculture Education program and our students. It is truly a privilege to help guide these young people as they grow, discover their strengths, and find their place within our school, community, and future careers. Their accomplishments continue to inspire me, and I am grateful for the opportunity to be part of their journey.

Sincerely,
Carrie Koester