



SOUTHWEST
TEXAS★COLLEGE

www.swtjc.edu

Adult Education And Literacy

Southwest Texas College

About

- Established in 1973
- Federally funded Grant program
- Formerly under the Texas Education agency
- Transitioned to Texas Workforce Commission (2013)

ADULT EDUCATION AND LITERACY

Mission

To promote and support a responsive and accountable system that creates value and supports local solutions to addressing the educational and workforce development needs of AEL students, businesses, and community stakeholders

ADULT EDUCATION AND LITERACY

Vision

To educate and empower all participants with the skills necessary to function effectively and succeed in their personal /familial lives, the workplace, and the community.

Map of 11-County Service Area

ADULT EDUCATION AND LITERACY

Service Delivery Area

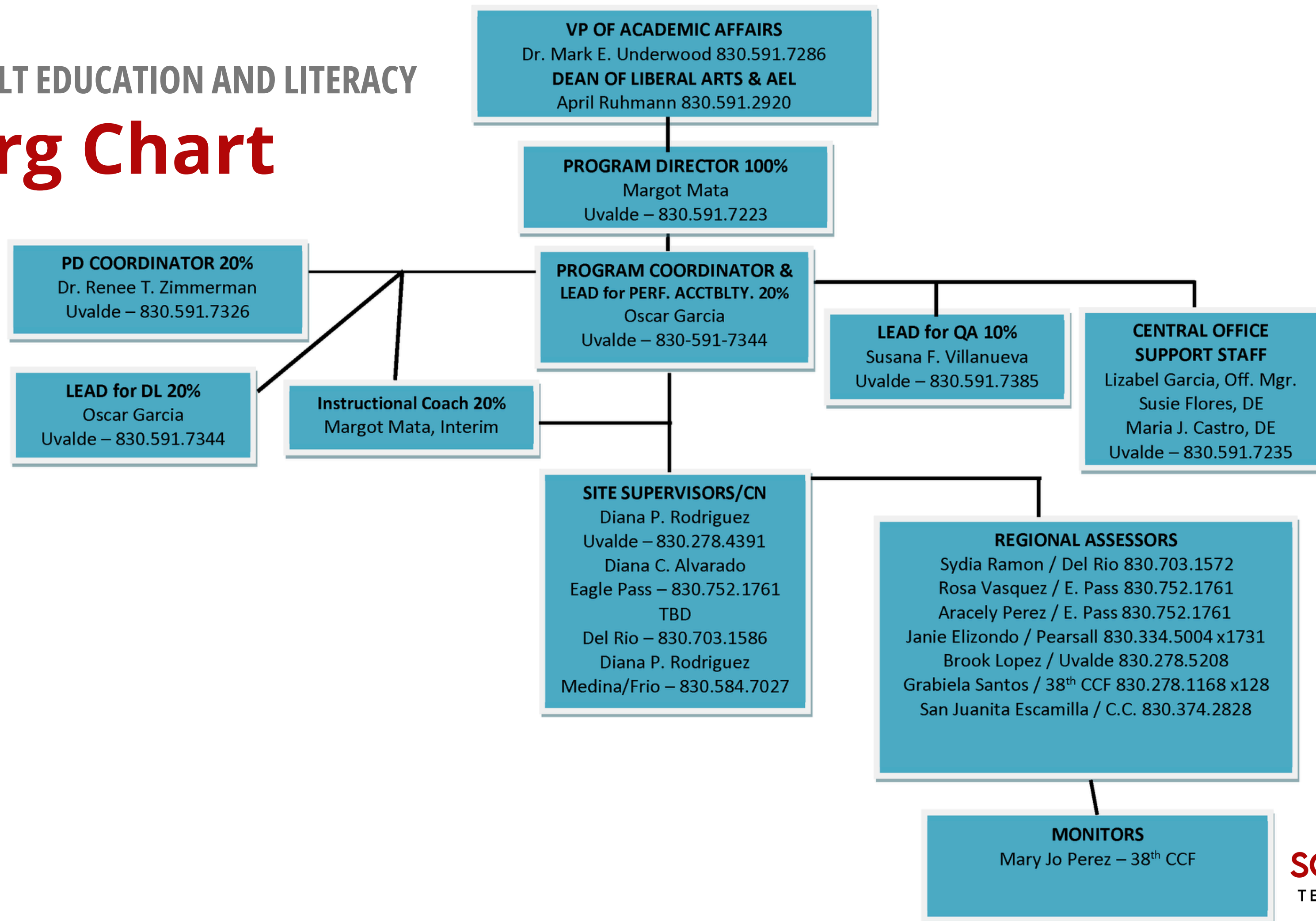
Service Delivery Area

- Counties:
- Dimmit
- Edwards
- Frio Kinney
- La Salle
- Maverick
- Medina
- Real
- Uvalde
- Val-Verde
- Zavala



ADULT EDUCATION AND LITERACY

Org Chart



ADULT EDUCATION AND LITERACY

Instructional Staff

- 37 Part Time
- 9 Full Time
- 108 Classes (YTD)



Strategic Goals and Objectives

- Strategically aligns with the SWTX Strategic Plan.
- Fosters an accessibility & Inclusivity strategy to engage and springboard students toward success
- Promotes a holistic & student-centered approach with wrap-around services to foster persistence, measurable skills gains, and credentials
- Aims to realize outcomes and transition participants into training, higher education, or workforce opportunities.

Instructional Deliverables

- ESL/EL-Civics – Integrated English as a Second Language & Civics Education (Levels 1-6)
- ABE – Adult Basic Education (Pre-GED Levels 1-4]
- ASE – Adult Secondary Education (GED Levels 1-2)
- *The regular curriculum Above incorporates:
(Digital Literacy; Financial Literacy; Life Skills; Workforce skills & career exploration)
- Re-Entry – Real Life Curriculum to acclimate post-release participants to society
- WPL – Workplace Literacy Classes customized to employer milestones
- IET – Integrated Education & Training (concurrent enrollment w/Contextualized instruction to accelerate Learning}

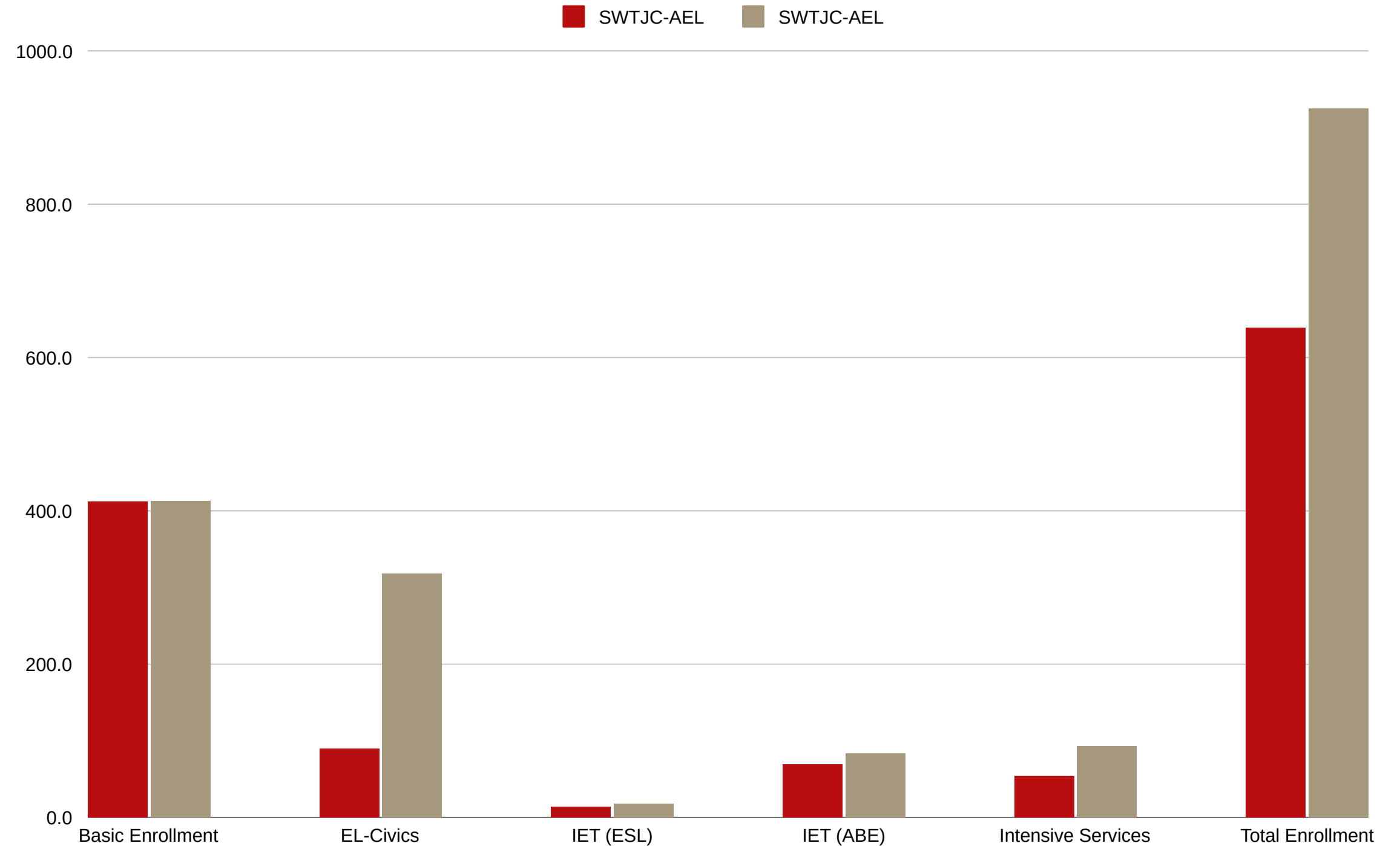
Instructional Modalities

- Hy-Flex Approach – Combination Hybrid/Flexible options for participation (In-Person, Remote Instruction, Online Learning, or a combination thereof)

ADULT EDUCATION AND LITERACY

AEL YTD Enrollment

SWTJC-AEL		
YTD Enrollments		
	Target	Actual
Basic Enrollment	412	413
EL-Civics	90	318
IET (ESL)	14	18
IET (ABE)	69	83
Intensive Services	54	93
Total Enrollment	639	925



ADULT EDUCATION AND LITERACY

Accolades

- 92 TXCHSE Graduates (YTD)
- 80% of Exiters Transitioned to Workforce
- Approximately 10-14% of Exiters Transitioned to Training or Higher Education
- Trained/Certified (101) participants (Certified Forklift Operator; Certified Nurse Aide, Medical Billing & Coding Specialist, Certified Construction Technology, Certified Phlebotomy Tech.)
- 58% MSG Rate vs. State Avg. of 37% (YTD)
- 56% Credential Rate vs. State Avg. of 44% (YTD)
- Secured Rapid Enrollment PBF Measure (December 2023)
- Secured MSG PBF (March, 2024)
- State Recognized Program (currently in a five-way tie for 1st place in the state based on TWC MPR)
- Numerous Best In Class (Performance Targets) Awards over the past years



ADULT EDUCATION AND LITERACY

Community Partnerships

- AVANCE – San Antonio
- Camp Wood Public Library
- Community Council of South Central TX
- Community Health Devlpt., Inc.
- Del Rio Mexican Consulate
- Dilley ISD
- Dilley Motor Inn (WPL)
- Dismas Charities, Inc.
- Eagle Pass Correctional Facility – GEO
- GED Testing Center (SWTJC)
- Eagle Pass Mexican Consulate
- Kinney County Public Library
- La Pryor ISD
- Maverick Arms (WPL)
- SAS – Del Rio
- St. Henry De Osso
- Southwest Area Regional Transit
- Student Nest (MACC)
- SWTJC Educational Opportunities Ctrs.
- SWTJC Student Success Center
- SWTJC Workforce Training & Dvlpt.
- 38th Judicial District – CSCD
- UCISD ACE Program
- UCISD Batesville Campus
- UCISD Crossroads Academy
- Medina Valley ISD
- M.E.T., Inc. YouthBuild (IET)
- MRG Workforce Solutions / Board
- Pearsall ISD

ESL Certified Nurse Aide IET



Workplace Literacy San Antonio Shoes - Del Rio



ADULT EDUCATION AND LITERACY



ADULT EDUCATION AND LITERACY



Thank
you