

Space Study Project: Site Visits

Our first public forum is rapidly approaching on October 23. Our project narrative concerns itself with the following question: how will our library keep pace and stay in alignment with the rapid growth and projected growth of Carmel? This first public forum is an opportunity to get community feedback, and I hope it will begin to clarify the question of how to better expand services to the west side of Carmel.

To prepare for our project, I planned a series of library site visits. As of this writing, I have completed a series of site visits in the Seattle, Portland, and Vancouver area. The following reports partially sums my observations of these visits:

Seattle visit:

Rick Sheridan, Director of Institutional and Strategic Advancement, recommended the following three locations, noting that they have all recently been refurbished and updated, via their Re-Imagining Spaces (RIS) effort, to better meet patron needs and support operations. They gave me a sense as to where library leadership is attempting to move the system in terms of design and operations.

- Rainier Beach Branch
9125 Rainier Ave. S.
Seattle, WA 98118

Walking into this library, it was immediately apparent why I was directed to visit this location: it is one big open space. All shelving is low, making sure the entire space is visible from any location in the building. Signage is subtle yet it is evident where the main sections of the library are. Seating is a mix of low comfortable seating



configurations and tables and chairs of varying heights. This branch is a mix of simplicity and functionality. It utilizes a crisp and clean use of color and natural lighting from windows that wrap around nearly half the building. Service desks seem to have been consolidated into a single area.

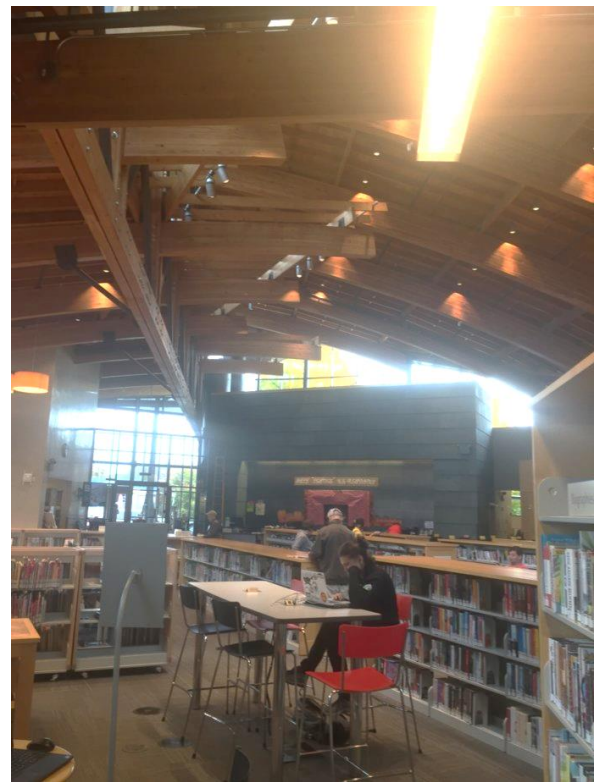


- Beacon Hill Branch
2821 Beacon Ave. S.
Seattle, WA 98144

This branch is of a similar character to Rainier Beach Branch in that it is based on an open-space floor plan with low shelving predominantly through the building. There are taller shelves here but they are confined to a small space in the back and therefore does not obstruct the open space view of the interior. I love the tall and ornate wood ceilings, and the large windows were very effective in bringing natural light to the library. The soft yellow light was also a good compliment to the blonde wood used in furniture, shelving and throughout the building itself.



I love the tall and ornate wood ceilings, and the large windows were very effective in bringing natural light to the library. The soft yellow light was also a good compliment to the blonde wood used in furniture, shelving and throughout the building itself.



- Greenwood Branch
8016 Greenwood Ave. N
Seattle WA 98103



Again, the open space aesthetic came through clearly. After talking with a staff member, I could see how they had successfully consolidated service desks, merging into a central desk with stations available and viewable 360 degrees. The youth area was notable in that all of the open floor shelving was movable. Indeed, I'm told they frequently do move shelves out of the way to hold programs and do different things with the space.

- Magnolia Branch
2801 34th Ave. W.
Seattle, WA 98199

I was advised that this branch really captures the esthetic of the Pacific Northwest. Though built in a different era, the building design is really first rate. It also captures the open feel of the other locations through natural lighting and shorter shelving. As in the others, the Clerestory windows let in plenty of natural light and helped warm the space. This branch was renovated to add a meeting room and study room however, and the staff was nice enough to unlock it to let me view it. With its Japanese-inspired influence, this was a truly beautiful library branch.

In addition to the Seattle Library system, MSR recommended some branch libraries from the King County Library system. Of those, I was able to visit the following library branch:

- Kenmore Branch
6531 NE 181st Street
Kenmore WA 98028

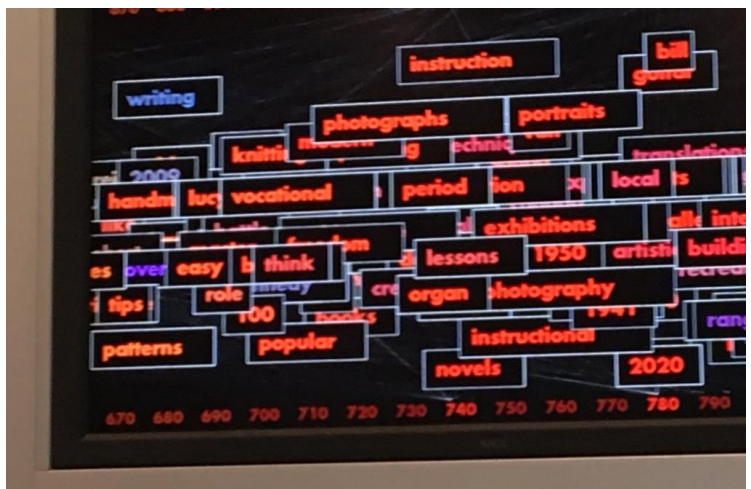
This was yet another cleanly lit open layout but relatively small (5-6,000 square feet) branch. What stood out to me the most with Kenmore was the beautiful outside patio area with walkways. I had a phone call during my visit and I stepped out onto this patio to take it and strolled the walkways. The effect this outside space had on me was twofold: I found it a serene and relaxing space and it made this branch feel bigger than others of similar interior space.



- Seattle Public Library

The director of the Seattle Library system, Marcellus Turner, was kind enough to set aside some time to meet with me and give me a tour of the central library on Tuesday. My report is due so I'll save further thoughts about this most impressive library for later and close with some pictures.

Pictured to the right is a piece of digital art tied to their system API. It is a representation of the Dewey areas that have been checked out within the last hour.

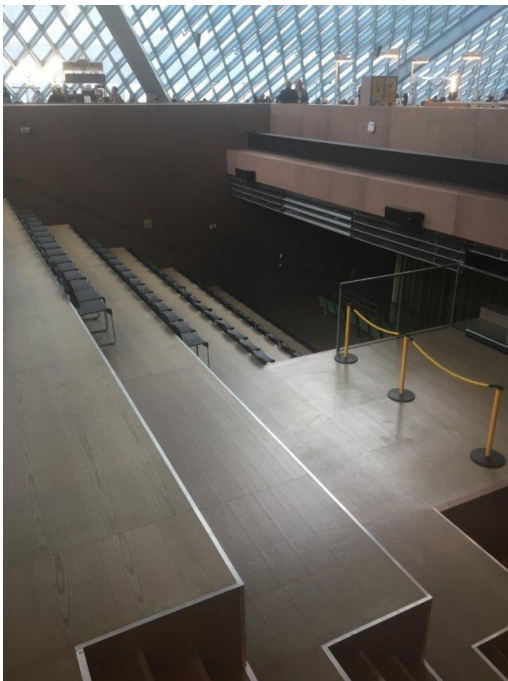




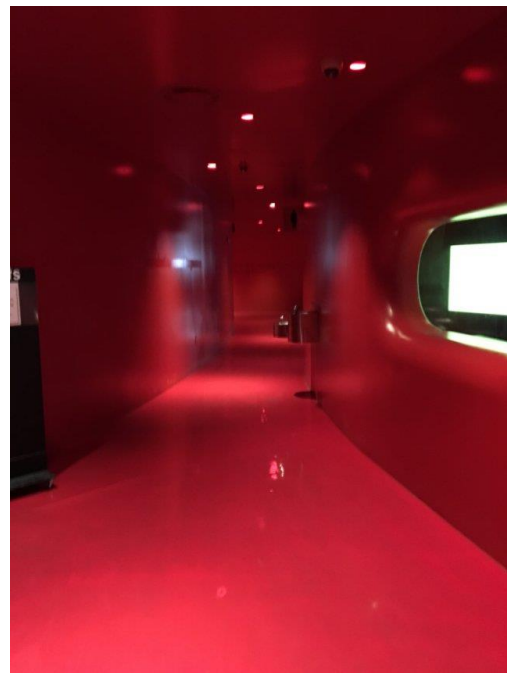
CYS Area



Floor on the first floor: this is a piece of commissioned art.



Stadium seating available



The very red fourth floor



Overview from the fifth floor

Portland visit:

Peter Konshak, Christy Walker and I visited the following three branches of the Portland/Multnomah County Library system:

- Hillsdale Library: opened in 2004, designed with "high-performance green building practices to significantly reduce the building's negative impact on the environment while providing an inviting, friendly and comfortable place for library patrons of all ages." 18.1 miles north from hotel.
- Hollywood Library: opened in 2002, a 13,000-square-foot library combined with 47 mixed-income apartments and 815 square feet of ground floor retail space. 11.9 miles north from hotel.
- Kenton Library: in a storefront building at 8226 N. Denver Ave. Kenton Library opened on March 8, 2010. 8.9 miles south of hotel.

Following these visits, we then joined our Library Journal group for a tour of the Vancouver Public Library, which in many ways I found to be the best site visit of my trip. Peter took pictures of our visits, and I will report more next time.

DML Report:

Mark your calendars -- planning is underway for a one year anniversary party for the Digital Media Lab. The party will be held on November 11 from 5:00-8:00 p.m. at the DML. Live music and light refreshments will be provided.



DIGITAL MEDIA LAB
CARMEL CLAY PUBLIC LIBRARY

PLEASE JOIN US IN CELEBRATING OUR

ONE YEAR ANNIVERSARY

SATURDAY, NOVEMBER 11, 2017
5:00PM-8:00PM

23 EAST MAIN STREET, SUITE 100
CARMEL, IN 46032

ENJOY AN EVENING OF CREATIVE CONVERSATION,
LIVE MUSIC, AND REFRESHMENTS
AS WE LOOK TO THE FUTURE OF DIGITAL ARTS
IN THE CARMEL, INDIANA COMMUNITY
[NO RSVP REQUIRED]