

A large yellow semi-circle is positioned on the left side of the slide, partially overlapping a blue rectangular area that has a drop shadow.

# Grouse Creek

## Community Meeting

March 1, 2022

# Purpose

- High levels of learning for all kids
- Capital Outlay Committee (approved by the Board)
  - May 12, 2021
- Original plan was to bring it up to code
  - Board requested an Structural Engineer
  - Structure is not advantageous to this goal.
- Save the rock from the front and use on the new site

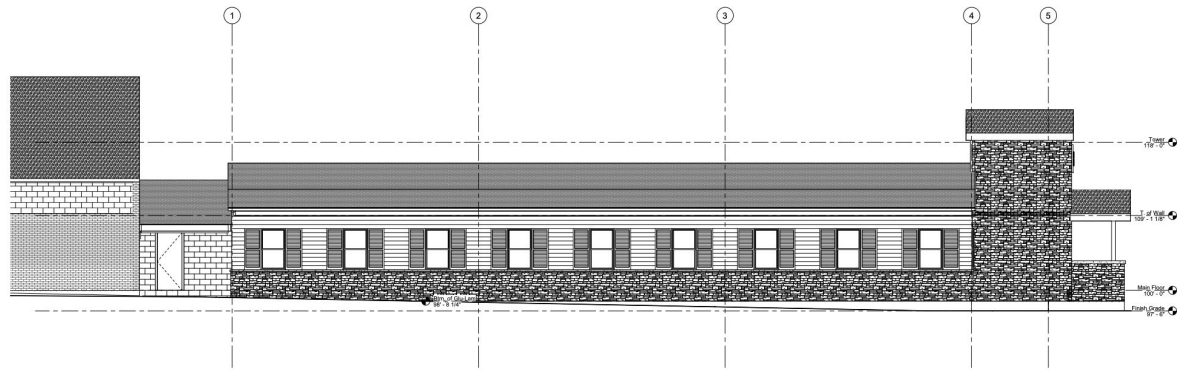
1

# Timeline

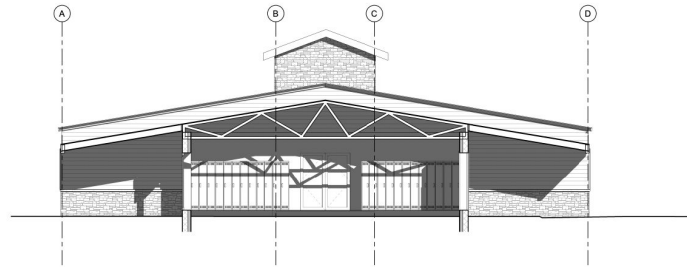
Corey Thompson







1 South  
1/4" = 1'-0"



2 West  
1/4" = 1'-0"

