

March 16, 2022

Mr. Phillip Francis
Asst. Superintendent of District Services
Livonia Public Schools
15125 Farmington Road
Livonia, MI 48154

RE: 2021 Bond Program
LMC Furniture Purchase Recommendation
Coolidge ES / Kennedy ES / Randolph ES / Cooper UES / Emerson MS

Dear Mr. Francis:

This letter transmits an update from Plante Moran Cresa (PMC) as it relates to the assignment to assist and advise Livonia Public Schools (LPS) in its purchase of furniture for the Project listed above. This update represents the mutual efforts of PMC, French Associates, and LPS administration and staff (the Team).

Coinciding with ongoing design efforts to renovate and reimagine LMC spaces as part of the 2021 Bond Program, the Team has conducted multiple meetings and site visits over the course of the past few months focused on the selection of furniture to best serve each space. Following a previous recommendation for a portion of Randolph Elementary's furniture, the Team continued meetings with LPS staff to finalize design, select finishes and test samples for the remaining furniture at the remaining 2022 sites.

The Team recommends awarding **NBS Commercial Interiors** to supply and install LMC furniture in an amount not-to-exceed **\$1,012,394.00** as further detailed below and within French's recommendation documents.

Cooper Upper Elementary:	\$201,938.95
Coolidge Elementary:	\$185,956.58
Kennedy Elementary:	\$166,632.15
Randolph Elementary:	\$110,290.56
Emerson Middle School:	\$299,366.55
<hr/>	
NBS Quotation:	\$964,184.79
Contingency (5%):	\$48,209.21
<hr/>	
Award Recommendation (NTE):	\$1,012,394.00

For the Vendor, the pricing for this work will be detailed in a Purchase Order Agreement, pending final review and approval of terms by district legal counsel.

The Team is available at the Board's convenience to answer any questions regarding this recommendation. Please direct all questions through me via email at brian.weber@plantemoran.com.

Sincerely,

PLANTE MORAN CRESA

A handwritten signature in blue ink, appearing to read "Brian Weber", with a stylized flourish extending to the right.

Brian Weber
Vice President

Enclosures: French Associates Recommendation Letter
 Vendor Proposals
 Product Information & Layout



architects planners interiors

236 Mill Street
Rochester, MI
48307

March 16th, 2022

Phillip Francis
Asst. Superintendent of District Services
Livonia Public Schools

**Subject: 2021 Bond Program – 2022 Renovations
Media Center and Idea Factory Furniture**

Dear Mr. Francis,

French Associates has been consulting with NBS Commercial Interiors in the development and programming of furniture for the 2021 Bond Program projects. Throughout the design process, NBS has aided in product selections, availability, and lead times.

On March 15th, 2022, French Associates received furniture quotes from NBS Commercial Interiors for the Media Center and Idea Factory furniture for Cooper Upper Elementary, Coolidge Elementary, Kennedy Elementary, Randolph Elementary and Emerson Middle School.

Enclosed are the furniture quotes that utilize the NCPA, Omnia and E&I consortium group pricing. The totals for these projects are as follows and are to not to be exceeded:

Cooper Upper Elementary: \$201,938.95
Coolidge Elementary: \$185,956.58
Kennedy Elementary: \$166,632.15
Randolph Elementary: \$110,290.56
Emerson Middle School: \$299,366.55

French Associates is recommending award to NBS Commercial Interiors for the procurement and installation of furniture in the Media Centers and Idea Factories at the schools listed above. The value of the award is not to exceed \$964,184.79.

Please contact me if you have any questions.

Sincerely,

Jessica Walter
Interior Designer



2595 Bellingham • Troy, MI 48083 • 248.823.5400 • 248.823.5401 Fax
 2211 Old Earhart Rd. Ste.190 • Ann Arbor, MI 48105 • 248.823.5400 • 248.823.5401 Fax
 3201 Pine Tree Rd. Ste. A • Lansing, MI 48911 • 517.886.0072 • 248.823.5401 Fax
 5160 Alliance Dr. • Bay City, MI 48706 • 989.895.8574 • 989.895.8545 Fax
 4 North St. Clair St. • Toledo, OH 43604 • 419.662.2040 • 248.823.5401 Fax

Quotation 347620

Quote Date 03/14/22

Customer Order

Project 212187

Customer L00002

Terms NET 10 DAYS

Expiration Date

Account Representative MONIQUE DUGAN

yourNBS.com **Remit Payments to:** NBS, 6973 Reliable Parkway, Chicago, IL 60686

Quote To

Livonia Public Schools
 15125 FARMINGTON RD
 LIVONIA, MI, 48154-5413

Ship To

PHILLIP FRANCIS
 Cooper Upper Elementary
 28550 ANN ARBOR TRL
 Media Center
 WESTLAND, MI, 48185-1817

Phone +1 (734) 744-2554

pfrancis@livoniapublicschools.org

Sales Location Troy

THE FOLLOWING CONTRACTS HAVE BEEN USED FOR PRICING ON THIS QUOTE:

NCPA
 OMNIA
 E&I

PO REQUIRED TO PLACE ORDER

PLEASE NOTE: STEELCASE & SMITH SYSTEM ARE HAVING PRICE INCREASES ON APRIL 18TH, THIS QUOTE DOES NOT REFLECT INCREASE

PRICING DOES NOT INCLUDE THE REMOVAL OF EXISTING PRODUCT

PRICING IS VALID FOR 30 DAYS

LEAD TIME: 14-16 WEEKS FROM RECEIPT OF PO

30 DAYS OF FREE STORAGE IS INCLUDED IN YOUR PRICING - IF THERE ARE ANY CONSTRUCTION DELAYS AND STORAGE IS REQ THE ADDITIONAL COSTS WOULD BE INVOICED TO LPS.

Description	Quantity	Unit Price	Extended Price
CLASSROOM			
1 N45BPR - CINCH,PLASTIC BACK,PLASTIC SEAT,MOBILE, PKG 1 BACK PLASTIC COLOR: P06: PEBBLE SEAT PLASTIC COLOR: P06: PEBBLE PAINT: 501: PLATINUM METALLIC CASTER:	44	241.50	10,626.00

TITLE OF PRODUCT TRANSFERS UPON RECEIPT BY CUSTOMER.

ACCEPTED BY _____ TITLE _____ DATE _____

yourNBS.com

Remit Payments to: NBS, 6973 Reliable Parkway, Chicago, IL 60686

Description	Quantity	Unit Price	Extended Price
1 C4: SOFT DUAL WHEEL, BLACK NATIONAL Tag For CLASSROOM CH-1			
2 N45MMR - CINCH, ARMS, PKG 1, BLACK NATIONAL Tag For CLASSROOM CH-1	44	75.44	3,319.36
3 SMEMTNL2472 - Elemental; Table-Nest and fold, With casters, 24D x 72W Worksurface Finish: Smith System Laminate 494360 - CLASSIC LINEN LAMINATE Edge Type: D-1 1/4in Top w 4mm TMld Edge Finish: Smith System T-Mold CHP - CHAMPAGNE T MOLD Leg Finish: Smith System Paint PLT - Platinum Height: EJ - Adjustable Height SMITH SYST Tag For CLASSROOM 24/72-EJ	22	768.60	16,909.20
Sub Total			30,854.56
Total			30,854.56
IDEA LAB			
4 SMEMTEL60TR - Elemental; Table-Trapezoid, 30D x 60W Worksurface Finish: Smith System Laminate 494360 - CLASSIC LINEN LAMINATE Edge Type: D-1 1/4in Top w 4mm TMld Edge Finish: Smith System T-Mold CER - CERULEAN T MOLD Leg Finish: Smith System Paint PLT - Platinum Height: EA - Adjustable Height SMITH SYST Tag For IDEA LAB 30/60-EJ	6	321.60	1,929.60
5 SMINC17577 - Interchange; 3 inch dual wheel casters-Pack of 4, Locking, Colorful Caster Finish: Smith System Plastic CERULEAN - Cerulean SMITH SYST Tag For IDEA LAB CSTR/4	6	72.60	435.60
6 SMPLN25271BUTCHER - Planner; Studio-Single bench, Butcher	6	561.00	3,366.00

TITLE OF PRODUCT TRANSFERS UPON RECEIPT BY CUSTOMER.

ACCEPTED BY _____ TITLE _____ DATE _____

yourNBS.com

Remit Payments to: NBS, 6973 Reliable Parkway, Chicago, IL 60686

Description	Quantity	Unit Price	Extended Price
6 block, For 72W table, 12D x 58W Leg Finish: SMITH SYSTEM PAINT CE - CERULEAN SMITH SYST Tag For IDEA LAB 12/58			
7 SMPLN25212BUTCHER - Planner; Studio-Butcher table, Fixed height, With casters, 36D x 72W x 29H Leg Finish: SMITH SYSTEM PAINT CE - CERULEAN SMITH SYST Tag For IDEA LAB BT-36/72	3	1,305.60	3,916.80
8 SMOODLE31 - Oodle; Stool-Stack of 3, With 1 movement disc Oodle Finish: Smith System Plastic CERULEAN - Cerulean SMITH SYST Tag For IDEA LAB OODLE-B (STACK 3-HIGH) *COMES AS A PACK OF 3	6	149.40	896.40
9 SMOODLE31 - Oodle; Stool-Stack of 3, With 1 movement disc Oodle Finish: Smith System Plastic CHARCOAL - Charcoal SMITH SYST Tag For IDEA LAB OODLE-C (STACK 3-HIGH) *COMES AS A PACK OF 3	6	149.40	896.40
10 SMOODLE31 - Oodle; Stool-Stack of 3, With 1 movement disc Oodle Finish: Smith System Plastic PLATINUM - Platinum SMITH SYST Tag For IDEA LAB OODLE-P (STACK 3-HIGH) *COMES AS A PACK OF 3	6	149.40	896.40
Sub Total			12,337.20
Total			12,337.20
11 UPCHARGE - HIGH GLOSS LAMINATE UPCHARGE FOR ALL TABLES SMITH SYST	1	623.00	623.00
MEDIA CENTER			
12 SMLBR21004 - Booktruck, Six Sloping Shelf with Six Book Supports, 18"D x 36"W x 43"H Cart Finish: Smith System Paint PB - PERSIAN BLUE	4	426.00	1,704.00

TITLE OF PRODUCT TRANSFERS UPON RECEIPT BY CUSTOMER.

ACCEPTED BY _____ TITLE _____ DATE _____

Description	Quantity	Unit Price	Extended Price
<p>12 Divider Finish: Smith System Plastic SMOKE - SMOKE SMITH SYST Tag For BOOK CART ST/6SS-D</p>			
<p>13 990-00001-000 - WALL MOUNTED COUNTER WITH CABINET XFC-A2490-13, Custom Floating Counter, 90"L x 24"D x 13"H. Unit to be HPL construction. To have 30"W x 4"H section on left with grommet. Center section to be 30"W x 13"H w/ 2 locking doors and grommet in top and rear. Right hand section to be on same plane as cupboard storage 30"W x 4"H. Unit to be wall mounted w/ no supports. Refer to dealer provided drawing. HPL Body (shown as blue excluding doors): Nevamar – Spicy Flavors S8002T HPL Face (shown as white & doors also): Wilsonart- Crystal D388-60 Pull: TBD PER QUOTE: 145519 MEDIA TECH Tag For WALK-UP COUNTER MEDIA CENTER</p>	1	3,511.20	3,511.20
<p>14 990-001210-000 - Media Technologies Upcharge for Premium Laminate Wilsonart – Quince Y0346-60 Per Quote: 145514 MEDIA TECH</p>	1	245.78	245.78
<p>15 H11-4212-HPL Back - Media Technology H11-4212-HPL Back 960-032124-000 Benchmark, HPL Shelving Single Faced Starter 37"Wx12"Dx42"H HPL construction/3mm PVC edges, HPL back, 1 fixed & 2 adjustable shelves HPL: Formica Greyed Oak 5791-PG PVC: TBD Per Quote: 145087 MEDIA TECH Tag For 36W42H-S MEDIA CENTER</p>	9	550.00	4,950.00
<p>16 H11-4212A-HPL Back - Media Technologies H11-4212A-HPL Back 960-032125-000 Benchmark, HPL Shelving Single Faced Adder 36"Wx12"Dx42"H HPL construction/3mm PVC edges, HPL back, 1 fixed & 2 adjustable shelves. Per Quote: 145087 MEDIA TECH</p>	13	473.88	6,160.44

TITLE OF PRODUCT TRANSFERS UPON RECEIPT BY CUSTOMER.

yourNBS.com

Remit Payments to: NBS, 6973 Reliable Parkway, Chicago, IL 60686

Description	Quantity	Unit Price	Extended Price
16 Tag For 36W42H-A MEDIA CENTER			
17 H11-1816BS-COM - Media Technologies H11-6012-HPL Back Benchmark, HPL Shelving Bookstack Bench Seat 37"W x 16"D x 18"H HPL construction/3mm PVC edges, HPL back with upholstered top. HPL: Formica Greyed Oak 5791-PG HPL Interior Back Panel: WA Lapis Blue D417-60 COM Fabric: Arc-Com Fragment AC-63189 Cobalt COM: 1 yard each Per Quote: 145514 MEDIA TECH Tag For 36W18H MEDIA CENTER	6	583.88	3,503.28
18 H11-6012A-HPL BACK - Media Technologies Drift Convex Curved Shelving 72"W x 48"H x 18D, HPL construction with 3mm PVC edge banding, Steel powder coated perforated back, 1 vertical storage space divider, 4 adjustable shelves on outer curve, locking casters, unit ships assembled, casters require installation HPL: Formica Greyed Oak 5791-PG PVC: TBD Powder Coat: TBD Per Quote: 145514 MEDIA TECH Tag For CURVED BKCSE MEDIA CENTER	4	1,347.72	5,390.88
19 31-LK - Media Technologies 31-LK 990-000614-000 Leveling Kit for use on 11 Series shelving 800-000091-000 + 800-000007-000 1 set needed for an adder 2 sets needed for a starter 2 sets needed for a Bookstack Bench Seat MEDIA TECH Tag For Qty Description <u>50 MEDIA CENTER</u>	50	5.72	286.00
20 H11-4824-HPL BACK - Media Technologies H11-4824-HPL BACK 960-180537-000 Benchmark, HPL Shelving Double Faced Starter 37"Wx24"Dx48"H HPL construction/3mm PVC edges, HPL back, 2 fixed & 4 adjustable shelves, 4 casters HPL: Formica Greyed Oak 5791-PG PVC: TBD Per Quote: 145514 MEDIA TECH	30	935.44	28,063.20

TITLE OF PRODUCT TRANSFERS UPON RECEIPT BY CUSTOMER.

ACCEPTED BY _____ TITLE _____ DATE _____

Description	Quantity	Unit Price	Extended Price
<p>21 DISP-4724 - Media Technologies DISP-4724 960-283747-000 Display End Panel, 3 opening, 24"Wx3-1/2"Dx47-1/2"H **to mount on H11-4824 Double Sided Bookcases. HPL/3mm PVC construction HPL: Formica Greyed Oak 5791-PG HPL Interior Back Panel PVC: TBD</p> <p>Per Quote: 145087 MEDIA TECH</p> <p>Tag For DISPLAY MEDIA CENTER</p>	10	629.20	6,292.00
<p>22 ND-75DX-MOB - Media Technologies ND-75DX-MOB 970-007136-000 Nomad Desk, 24"Dx75"Wx29"H Mobile 29"H worksurface with grommet, no Transaction top,3mm PVC Edge, (5) locking casters. A: HPL Main (large) Front: WA Lapis Blue D417-60 B: HPL Front Accent (small) Panel: Formica Greyed Oak 5791-PG C: HPL End Panel: Formica Greyed Oak 5791-PG D: HPL Work Surface & Trans Top: Pionite White Fiesta MW550-S D: PVC Work Surface & Trans Top: TBD E: Powder Coat: TBD</p> <p>Per Quote: 145514 MEDIA TECH</p> <p>Tag For NOMAD MEDIA CENTER</p>	1	3,242.36	3,242.36
<p>23 ND-40BR-MOB - Media Technologies ND-40BR-MOB 970-179190-000 Nomad Book Return, 30"Dx40"Wx29"H, Mobile HPL/3mm PVC top w/ radiused corners, book return slot in top, Curved face, steel end frames w/ floating HPL panel, 4 locking casters. For use w/ MCD-DBTL1824-24 Depressible Book Truck A: HPL Front: Formica Greyed Oak 5791-PG C: HPL End Panel: Formica Greyed Oak 5791-PG D: HPL Work Surface: WA Classic Linen 4943-38 D: PVC Work Surface: TBD E: Powder Coat: TBD</p> <p>Per Quote: 145087 MEDIA TECH</p> <p>Tag For BOOK RETURN MEDIA CENTER</p>	1	1,568.16	1,568.16
<p>24 MCD-DBTL-1824-24 - Media Technologies MCD-DBTL-1824-24 960-203769-000 Depressible Platform Book Truck, 18"Dx24.25"Wx24"H HPL construction with 3mm PVC edge banding, spring-loaded platform lift mechanism. HPL: Formica Greyed Oak 5791-PG PVC: TBD</p>	1	1,183.60	1,183.60

TITLE OF PRODUCT TRANSFERS UPON RECEIPT BY CUSTOMER.

ACCEPTED BY _____ TITLE _____ DATE _____

Description	Quantity	Unit Price	Extended Price
24 Per Quote: 145087 MEDIA TECH Tag For BOOK TRUCK MEDIA CENTER			
25 KRB-C3060L-29-4C - Media Technologies Kirby Mobile Table 30"x60"x29"H HPL Worksurface, HPL Panels, 3mm PVC Edges, Panel-mount locking casters. HPL Top/Exterior End Panels: Formica 8824-58 White drops HPL Interior of Base: Wilsonart Lapis Blue D417-60 PVC: TBD Per Quote: 145514 MEDIA TECH Tag For KIRBY MEDIA CENTER	3	594.88	1,784.64
26 CBLOX-17-17-COM - Media Technologies CBLOX-17-17-COM Blox Seating - Cylinder 17"Dia x 17"H, high-density foam interior, COM fabric exterior - Cylinder shape Fabric: Arc Com Fragment AC-63189 Cobalt COM: 1.3 yards each Per Quote: 145514 MEDIA TECH Tag For F1 FLOWER MEDIA CENTER	1	239.36	239.36
27 AC-63189 - ARC-COM Fragment AC-63189 Cobalt #10 COM on CBLOX-17-17-COM Blox 1.3 yards each ROSE MOVIN	2	104.21	208.42
28 PBLOX-17-17-COM - Media Technologies Blox Seating - Pac-Man 17"Dia x 17"H, Grade COM PBLOX-17-17-COM high-density foam interior, COM fabric exterior - Pac-Man shape COM Fabric: Fabric: Designtex Iota 3008-201 Glow COM: 1.3 yards each Per Quote: 145514 MEDIA TECH Tag For F-2 FLOWER MEDIA CENTER	4	234.08	936.32
29 3008-201 - Designtex Iota 3008-201 Glow COM for PBLOX-17-17-COM Blox (COM. 1.3 yards each) DESIGNTEX	6	44.29	265.74
30 FTDJ-36-COM - Media Technologies FTDJ-36-COM Full Time Junior Ottoman, 36"Diax16"H, Round Upholstered seat, COM fabric w/ 2"T high density foam on 1"T	1	674.08	674.08

TITLE OF PRODUCT TRANSFERS UPON RECEIPT BY CUSTOMER.

yourNBS.com

Remit Payments to: NBS, 6973 Reliable Parkway, Chicago, IL 60686

Description	Quantity	Unit Price	Extended Price
<p>30 assembled frame w/ black self-leveling glides COM Fabric: Designtex Iota 3008-201 Glow COM. 2.5 yards each</p> <p>Per Quote: 145514 MEDIA TECH</p> <p>Tag For OTTOMAN MEDIA CENTER</p>			
<p>31 3008-201 - Designtex Iota 3008-201 Glow COM for FTDJ-36-COM ottoman (COM. 2.5 yards each) DESIGNTEX</p>	3	44.29	132.87
<p>32 FTDJ-36-COM - Media Technologies FTDJ-36-COM Full Time Junior Ottoman, 36"Diax16"H, Round Upholstered seat, COM fabric w/ 2"T high density foam on 1"T assembled frame w/ black self-leveling glides COM Fabric: Stinson Core 2.0 CRE 274 Regal Blue COM. 2.5 yards each</p> <p>Per Quote: 145514 MEDIA TECH</p> <p>Tag For OTTOMAN MEDIA CENTER</p>	1	674.08	674.08
<p>33 CRE274 - CF Stinson Core 2.0 CRE 274 Regal Blue COM for FTDJ-36-COM ottoman (COM. 2.5 yards each) ROSE MOVIN</p>	3	37.86	113.58
<p>34 FTDJ-36-COM - Media Technologies FTDJ-36-COM Full Time Junior Ottoman, 36"Diax16"H, Round Upholstered seat, COM fabric w/ 2"T high density foam on 1"T assembled frame w/ black self-leveling glides COM Fabric: Designtex Big Dot 3525-403 Indigo COM. 2.5 yards each</p> <p>Per Quote: 145514 MEDIA TECH</p> <p>Tag For OTTOMAN MEDIA CENTER</p>	1	674.08	674.08
<p>35 3525-403 - Designtex Big Dot 3525-403 Indigo COM for FTDJ-36-COM ottoman (COM. 2.5 yards each) DESIGNTEX</p>	3	82.86	248.58
<p>36 FTD-24-G1-5C - Media Technologies FTD-24-G1-5C 980-200212-001 Full Time Ottoman, 24"Dia x 18"H, Round, Mobile upholstered seat - Grade 1 fabric w/ 2"T high density foam on 1"T assembled frame, (5) locking casters</p>	12	525.36	6,304.32

TITLE OF PRODUCT TRANSFERS UPON RECEIPT BY CUSTOMER.

ACCEPTED BY _____ TITLE _____ DATE _____

yourNBS.com

Remit Payments to: NBS, 6973 Reliable Parkway, Chicago, IL 60686

Description	Quantity	Unit Price	Extended Price
36 COM Fabric: Momentum Silica Stride Royal COM: 1.25 yards each Per Quote: 145514 MEDIA TECH Tag For POUF MEDIA CENTER			
37 09191642 - Momentum Silica Stride Royal COM on FTD-24-G1-5C Ottoman Repeat: 24-3/4" V, 24-3/4" H COM: 1.25 yards each MOMENTUM	15	100.00	1,500.00
38 FTC-60-COM-5S - MEDIATECH Full Time Curve Ottoman, 54"W x 28"D x 18"H w/ 24" Returns FTC-60-COM-5S 980-284299-000 Wide side of curve is 60 degree, 54" radius, upholstered seat, grade COM fabric (2.5 yards required) w/ 2"T high density foam on 1"T assembled frame, steel post legs w/ a powdercoat finish Fabric: Stinson – Core 2.0 CRE 274 Regal Blue Powder Coat: TBD COM: 3 yards each Per Quote: 145514 MEDIA TECH Tag For S-5	4	953.04	3,812.16
39 CRE274 - CF Stinson Core 2.0 CRE 274 Regal Blue COM for FTDJ-36-COM ottoman (COM. 2.5 yards each) ROSE MOVIN	12	37.86	454.32
40 990-001210-000 - Media Technologies Upcharge for Premium Laminate Formica Greyed Oak 5791-PG Per Quote: 145514 MEDIA TECH	1	1,313.84	1,313.84
41 CHAM-22201 - MiEN Chameleon - Round Inside 29 (No Wall Power) Upholstery: Grade 3 MIEN CO Tag For MEDIA CENTER S-1	8	2,013.05	16,104.40
42 CRE274 - Stinson – Core 2.0 CRE 274 Regal Blue Pattern Repeat: No Repeat COM on Mien Chameleon ROSE MOVIN	22	71.43	1,571.46
43 AC-63189 - ARC-COM Fragment AC-63189 Cobalt #10	22	104.21	2,292.62

TITLE OF PRODUCT TRANSFERS UPON RECEIPT BY CUSTOMER.

ACCEPTED BY _____ TITLE _____ DATE _____

Description	Quantity	Unit Price	Extended Price
43 COM on Mien Chameleon ROSE MOVIN			
44 CHAM-23642 - MiEN Chameleon - Round Outside 29 (No Wall Power) Upholstery: Grade 3 MIEN CO Tag For MEDIA CENTER S-4	3	1,992.90	5,978.70
45 CRE274 - Stinson – Core 2.0 CRE 274 Regal Blue Pattern Repeat: No Repeat COM on Mien Chameleon CF STINSON	9	71.43	642.87
46 AC-63189 - ARC-COM Fragment AC-63189 Cobalt #10 COM on Mien Chameleon CF STINSON	9	104.21	937.89
47 TS31413M - Jenny; Chair-Round, Low, Multiple fabric INR BACK: 59DD GRADED IN PR. GRP. 4 DESIGNTEX INC Purchaser: VENDOR Pattern: ALPHABET -3877 Color: APPLE -502 Direction: HORIZONTAL OUT BACK: 59DD GRADED IN PR. GRP. 4 DESIGNTEX INC Purchaser: VENDOR Pattern: ALPHABET -3877 Color: APPLE -502 Direction: HORIZONTAL SEAT: 59DD GRADED IN PR. GRP. 4 DESIGNTEX INC Purchaser: VENDOR Pattern: ALPHABET -3877 Color: APPLE -502 Direction: HORIZONTAL STEELCASE Tag For MEDIA CENTER JENNY	4	985.50	3,942.00
48 TS4TWP - Campfire; Table-Personal TOP OPT: *OPT:TOP SELECTION HPL TOP: STD:HPL TOP TOP-SURF: TOP SURFACE OLL01: *TOP-SURF:OLL01 PRICE GROUP 1 2900: MISC LAMINATE	2	299.30	598.60

TITLE OF PRODUCT TRANSFERS UPON RECEIPT BY CUSTOMER.

ACCEPTED BY _____ TITLE _____ DATE _____

yourNBS.com

Remit Payments to: NBS, 6973 Reliable Parkway, Chicago, IL 60686

Description	Quantity	Unit Price	Extended Price
48 STEELCASE CORPORATION Laminate: 2511 -WINTER ON MAPLE STEELCASE Tag For MEDIA CENTER 14/26			
Sub Total			117,505.83
Total			117,505.83
SMALL GROUP			
49 N45BPR - CINCH,PLASTIC BACK,PLASTIC SEAT,MOBILE, PKG 1 BACK PLASTIC COLOR: P06: PEBBLE SEAT PLASTIC COLOR: P06: PEBBLE PAINT: 501: PLATINUM METALLIC CASTER: C4: SOFT DUAL WHEEL,BLACK NATIONAL Tag For SMALL GROUP CH-1	12	241.50	2,898.00
50 N45MMR - CINCH,ARMS,PKG 1,BLACK NATIONAL Tag For SMALL GROUP CH-1	12	75.44	905.28
51 SMEMTEL2460 - Elemental; Table-Rectangle, 24D x 60W Worksurface Finish: Smith System Laminate 494360 - CLASSIC LINEN LAMINATE Edge Type: 1 1/4in Top w 3/8in Bmp TMld Edge Finish: Smith System T-Mold CHP - CHAMPAGNE T MOLD Leg Finish: Smith System Paint PLT - Platinum Height: EA - Adjustable Height SMITH SYST Tag For SMALL GROUP 24/60-EJ	6	284.40	1,706.40
52 H11-7212-HPL BACK - Media Technologies Benchmark, HPL Shelving Single Faced Starter 37"W x 12"D x 72"H H11-7212-HPL Back 72H x 36W 960-006006-000 x12D HPL construction/3mm PVC edges, HPL back, 1 base and 4 adjustable shelves.	2	783.20	1,566.40

TITLE OF PRODUCT TRANSFERS UPON RECEIPT BY CUSTOMER.

ACCEPTED BY _____ TITLE _____ DATE _____

Description	Quantity	Unit Price	Extended Price
52 HPL: Formica Greyed Oak 5791-PG PVC: TBD Per Quote: 145514 MEDIA TECH Tag For 36W72H SMALL GROUP			
53 STCS-362484-LL-HPA - MEDIATECH Definitions cupboard Storage Unit - Tall unit 36"W x 24"D x 84"H HPL box, HPL front, 4 adj. shelves, 1 vertically centered fixed shelf, 2 doors w/Hinge #? and Pull #?, alike locks.MV Formica Greyed Oak 5791-PG PVC: TBD Hinge: H3 concealed Pull: TBD Per Quote: 145514 MEDIA TECH Tag For CABINET SMALL GROUP	2	1,058.64	2,117.28
Sub Total			9,193.36
Total			9,193.36
54 LOT - PROJECT MANAGEMENT FEES 16 HOURS X \$70 NBS TROY	1	1,120.00	1,120.00
55 LOT - NON UNION STRAIGHT TIME LABOR TO RECEIVE AND DELIVER NEW PRODUCT TO THE JOB SITE ALL WORK TO BE DONE AT ONE TIME ROSE MOVIN	1	2,231.00	2,231.00
56 LOT - NON UNION STRAIGHT TIME LABOR TO INSTALL NEW PRODUCT PER PRINT ALL WORK TO BE DONE AT ONE TIME PRICING DOES NOT INCLUDE THE REMOVAL OF EXISTING PRODUCT ROSE MOVIN	1	13,451.00	13,451.00
57 MONTHLY - MONTHLY STORAGE FEES TO HOLD FURNITURE AT WAREHOUSE. PRODUCT TO ARRIVE JULY 2022 TO AVOID PRICE INCREASES - WILL NEED STORAGE FOR THE MONTHS OF AUGUST, SEPTEMBER & OCTOBER	3	1,939.00	5,817.00

TITLE OF PRODUCT TRANSFERS UPON RECEIPT BY CUSTOMER.

ACCEPTED BY _____ TITLE _____ DATE _____



2595 Bellingham • Troy, MI 48083 • 248.823.5400 • 248.823.5401 Fax
 2211 Old Earhart Rd. Ste.190 • Ann Arbor, MI 48105 • 248.823.5400 • 248.823.5401 Fax
 3201 Pine Tree Rd. Ste. A • Lansing, MI 48911 • 517.886.0072 • 248.823.5401 Fax
 5160 Alliance Dr. • Bay City, MI 48706 • 989.895.8574 • 989.895.8545 Fax
 4 North St. Clair St. • Toledo, OH 43604 • 419.662.2040 • 248.823.5401 Fax

Quotation 347620
 Page 13 / 13 (cont'd)

yourNBS.com

Remit Payments to: NBS, 6973 Reliable Parkway, Chicago, IL 60686

Description	Quantity	Unit Price	Extended Price
57 WILL BE INVOICED MONTHLY FOR THE MONTHS USED ROSE MOVIN			

Quotation Totals			
Sub Total			193,132.95
SMITH SYST FREIGHT			4,782.00
MIEN CO FREIGHT			2,124.00
MEDIA TECH FREIGHT			1,750.00
CF STINSON FREIGHT			90.00
DESIGNTEX FREIGHT			60.00
Grand Total			201,938.95

End of Quotation

TITLE OF PRODUCT TRANSFERS UPON RECEIPT BY CUSTOMER.

ACCEPTED BY _____ TITLE _____ DATE _____



2595 Bellingham • Troy, MI 48083 • 248.823.5400 • 248.823.5401 Fax
 2211 Old Earhart Rd. Ste.190 • Ann Arbor, MI 48105 • 248.823.5400 • 248.823.5401 Fax
 3201 Pine Tree Rd. Ste. A • Lansing, MI 48911 • 517.886.0072 • 248.823.5401 Fax
 5160 Alliance Dr. • Bay City, MI 48706 • 989.895.8574 • 989.895.8545 Fax
 4 North St. Clair St. • Toledo, OH 43604 • 419.662.2040 • 248.823.5401 Fax

Quotation 347548

Quote Date 03/14/22

Customer Order

Project 212189

Customer L00002

Terms NET 10 DAYS

Expiration Date

Account Representative MONIQUE DUGAN

yourNBS.com

Remit Payments to: NBS, 6973 Reliable Parkway, Chicago, IL 60686

Quote To

Livonia Public Schools
 15125 FARMINGTON RD
 LIVONIA, MI, 48154-5413

Ship To

PHILLIP FRANCIS
 Coolidge Elementary School
 30500 CURTIS RD
 Media Center
 LIVONIA, MI, 48152-3484

Phone +1 (734) 744-2554

pfrancis@livoniapublicschools.org

Sales Location Troy

THE FOLLOWING CONTRACTS HAVE BEEN USED FOR PRICING ON THIS QUOTE:

NCPA
 OMNIA
 E&I

PO REQUIRED TO PLACE ORDER

PLEASE NOTE: STEELCASE & SMITH SYSTEM ARE HAVING PRICE INCREASES ON APRIL 18TH, THIS QUOTE DOES NOT REFLECT INCREASE

PRICING DOES NOT INCLUDE THE REMOVAL OF EXISTING PRODUCT

PRICING IS VALID FOR 30 DAYS

LEAD TIME: 14-16 WEEKS FROM RECEIPT OF PO

30 DAYS OF FREE STORAGE IS INCLUDED IN YOUR PRICING - IF THERE ARE ANY CONSTRUCTION DELAYS AND STORAGE IS REQ THE ADDITIONAL COSTS WOULD BE INVOICED TO LPS.

Description	Quantity	Unit Price	Extended Price
CLASSROOMS			
1 N45BPR - CINCH,PLASTIC BACK,PLASTIC SEAT,MOBILE, PKG 1 BACK PLASTIC COLOR: P06: PEBBLE SEAT PLASTIC COLOR: P06: PEBBLE PAINT: 501: PLATINUM METALLIC CASTER:	72	241.50	17,388.00

TITLE OF PRODUCT TRANSFERS UPON RECEIPT BY CUSTOMER.

ACCEPTED BY _____ TITLE _____ DATE _____

Description	Quantity	Unit Price	Extended Price
1 C4: SOFT DUAL WHEEL, BLACK NATIONAL Tag For CLASSROOMS CH-1 Qty Description <hr/> 36 MEDIA CLASSROOM 36 COMPUTER CLASSROOM			
2 N45MMR - CINCH, ARMS, PKG 1, BLACK NATIONAL Tag For CLASSROOMS CH-1 Qty Description <hr/> 36 MEDIA CLASSROOM 36 COMPUTER CLASSROOM	72	75.44	5,431.68
3 SMENTNL2472 - Elemental; Table-Nest and fold, With casters, 24D x 72W Worksurface Finish: Smith System Laminate 494360 - CLASSIC LINEN LAMINATE Edge Type: D-1 1/4in Top w 4mm TMld Edge Finish: Smith System T-Mold CHP - CHAMPAGNE T MOLD Leg Finish: Smith System Paint PLT - Platinum Height: EJ - Adjustable Height SMITH SYST Tag For CLASSROOMS 24/72-EJ Qty Description <hr/> 12 MEDIA CLASSROOM 12 COMPUTER CLASSROOM	24	768.60	18,446.40
Sub Total			41,266.08
Total			41,266.08
IDEA LAB			
4 SMPLN25212BUTCHER - Planner; Studio-Butcher table, Fixed height, With casters, 36D x 72W x 29H Leg Finish: SMITH SYSTEM PAINT OR - ORANGE SMITH SYST Tag For IDEA LAB BT-36/72	2	1,305.60	2,611.20
5 SMPLN25271BUTCHER - Planner; Studio-Single bench, Butcher block, For 72W table, 12D x 58W	4	561.00	2,244.00

TITLE OF PRODUCT TRANSFERS UPON RECEIPT BY CUSTOMER.

ACCEPTED BY _____ TITLE _____ DATE _____

yourNBS.com

Remit Payments to: NBS, 6973 Reliable Parkway, Chicago, IL 60686

Description	Quantity	Unit Price	Extended Price
5 Leg Finish: SMITH SYSTEM PAINT OR - ORANGE SMITH SYST Tag For IDEA LAB 12/58			
6 SMENTEL60TR - Elemental; Table-Trapezoid, 30D x 60W Worksurface Finish: Smith System Laminate 494360 - CLASSIC LINEN LAMINATE Edge Type: D-1 1/4in Top w 4mm TMld Edge Finish: Smith System T-Mold ORG - ORANGE T MOLD Leg Finish: Smith System Paint PLT - Platinum Height: EA - Adjustable Height SMITH SYST Tag For IDEA LAB 30/60-EJ	6	321.60	1,929.60
7 SMINC17577 - Interchange; 3 inch dual wheel casters-Pack of 4, Locking, Colorful Caster Finish: Smith System Plastic ORANGE - Orange SMITH SYST Tag For IDEA LAB CSTR/4	6	72.60	435.60
8 SMOODLE31 - Oodle; Stool-Stack of 3, With 1 movement disc Oodle Finish: Smith System Plastic CHARCOAL - Charcoal SMITH SYST Tag For IDEA LAB OODLE-C (STACK 3-HIGH) *COMES AS A PACK OF 3	6	149.40	896.40
9 SMOODLE31 - Oodle; Stool-Stack of 3, With 1 movement disc Oodle Finish: Smith System Plastic ORANGE - Orange SMITH SYST Tag For IDEA LAB OODLE-O (STACK 3-HIGH) *COMES AS A PACK OF 3	6	149.40	896.40
10 SMOODLE31 - Oodle; Stool-Stack of 3, With 1 movement disc Oodle Finish: Smith System Plastic PLATINUM - Platinum SMITH SYST Tag For IDEA LAB OODLE-P (STACK 3-HIGH) *COMES AS A PACK OF 3	6	149.40	896.40

TITLE OF PRODUCT TRANSFERS UPON RECEIPT BY CUSTOMER.

ACCEPTED BY _____ TITLE _____ DATE _____

Description	Quantity	Unit Price	Extended Price
11 SMCSC610012060 - Cascade Mega-Cabinet-Open, 12-3" & 6-6" SW totes, casters Edge Panel Configuration: P- Pltnm Body w/Solid End Pnl's End Panel Finish: Smith System Paint OR - ORANGE SMITH SYST Tag For IDEA LAB 43/43-TSW	1	1,159.20	1,159.20
12 SMCSC612008000 - Cascade Mega-Cabinet-Open, 8-3" SW totes & shelves, casters Edge Panel Configuration: P- Pltnm Body w/Solid End Pnl's End Panel Finish: Smith System Paint OR - ORANGE SMITH SYST Tag For IDEA LAB 43/43-T-S	1	1,188.60	1,188.60
13 SMCSCB10008040 - Cascade Mega-Cabinet-Open, 8-3" & 4-6" EW totes, casters Edge Panel Configuration: P- Pltnm Body w/Solid End Pnl's End Panel Finish: Smith System Paint OR - ORANGE SMITH SYST Tag For IDEA LAB 43/43-TEW	1	1,201.20	1,201.20
14 UPCHARGE - HIGH GLASS LAMINATE UPCHARGE FEE FOR ALL TABLES SMITH SYST	1	791.00	791.00
Sub Total			14,249.60
Total			14,249.60
MEDIA CENTER			
15 990-000001-000 - WALL MOUNTED COUNTER WITH CABINET XFC-A2490-13, Custom Floating Counter, 90"L x 24"D x 13"H. Unit to be HPL construction. To have 30"W x 4"H section on left with grommet. Center section to be 30"W x 13"H w/ 2 locking doors and grommet in top and rear. Right hand section to be on same plane as cupboard storage 30"W x 4"H. Unit to be wall mounted w/ no supports. Refer to dealer provided drawing. HPL Body (shown as blue excluding doors): Nevamar – Spicy Flavors S8002T HPL Face (shown as white & doors also): Wilsonart- Crystal D388-60 Pull: TBD PER QUOTE: 145519 MEDIA TECH Tag For WALK-UP COUNTER MEDIA CENTER	1	3,511.20	3,511.20

TITLE OF PRODUCT TRANSFERS UPON RECEIPT BY CUSTOMER.

yourNBS.com

Remit Payments to: NBS, 6973 Reliable Parkway, Chicago, IL 60686

Description	Quantity	Unit Price	Extended Price
16 H11-3612-HPL BACK - Media Technology H11-3612-HPL Back 960-032124-000 Benchmark, HPL Shelving Single Faced Starter 37"Wx12"Dx36"H HPL construction/3mm PVC edges, HPL back, 1 fixed & 1 adjustable shelf HPL: Formica Greyed Oak 5791-PG PVC: TBD MEDIA TECH Tag For 36W36H-S MEDIA CENTER	4	550.00	2,200.00
17 H11-3612A-HPL BACK - Media Technologies H11-3612A-HPL Back 960-032125-000 Benchmark, HPL Shelving Single Faced Adder 36"Wx12"Dx42"H HPL construction/3mm PVC edges, HPL back, 1 fixed & 1 adjustable shelf MEDIA TECH Tag For 36W36H-A MEDIA CENTER	17	473.88	8,055.96
18 H11-4824-HPL BACK - Media Technologies H11-4824-HPL BACK 960-180537-000 Benchmark, HPL Shelving Double Faced Starter 37"Wx24"Dx48"H HPL construction/3mm PVC edges, HPL back, 2 fixed & 4 adjustable shelves, 4 casters HPL: Formica Greyed Oak 5791-PG PVC: TBD MEDIA TECH	32	935.44	29,934.08
19 DISP-4724 - Media Technologies DISP-4724 960-283747-000 Display End Panel, 3 opening, 24"Wx3-1/2"Dx47-1/2"H **to mount on H11-4824 Double Sided Bookcases. HPL/3mm PVC construction HPL: Formica Greyed Oak 5791-PG HPL Interior Back Panel PVC: TBD MEDIA TECH Tag For DISPLAY MEDIA CENTER	8	629.20	5,033.60
20 31-LK - Media Technologies 31-LK 990-000614-000 Leveling Kit for use on 11 Series shelving 800-000091-000 + 800-000007-000 1 set needed for an adder 2 sets needed for a starter. MEDIA TECH	25	5.72	143.00
21 ND-84DX-MOB - Media Technologies ND-84DX-MOB 990-000059-000 Nomad Desk, 30"D x 84"W x 29"H, Mobile 29"H worksurface with grommet, NO Transaction top, 3mm PVC Edge, (5)	1	4,258.32	4,258.32

TITLE OF PRODUCT TRANSFERS UPON RECEIPT BY CUSTOMER.

ACCEPTED BY _____ TITLE _____ DATE _____

Description	Quantity	Unit Price	Extended Price
<p>21 locking casters. A: HPL Main (large) Front: Nevamar Spicy Flavors S8002T B: HPL Front Accent (small) Panel: Formica Greyed Oak 5791-PG C: HPL End Panel: Formica Greyed Oak 5791-PG D: HPL Work Surface & Trans Top: Pionite White Fiesta MW550-S D: PVC Work Surface & Trans Top: TBD E: Powder Coat: TBD</p> <p>Per Quote: 145518 MEDIA TECH</p> <p>Tag For NOMAD MEDIA CENTER</p>			
<p>22 ND-40BR-MOB - Media Technologies ND-40BR-MOB 970-179190-000 Nomad Book Return, 30"Dx40"Wx29"H, Mobile HPL/3mm PVC top w/ radiused corners, book return slot in top, Curved face, steel end frames w/ floating HPL panel, 4 locking casters. For use w/ MCD-DBTL1824-24 Depressible Book Truck A: HPL Front: Formica Greyed Oak 5791-PG C: HPL End Panel: Formica Greyed Oak 5791-PG D: HPL Work Surface: WA Classic Linen 4943-38 D: PVC Work Surface: TBD E: Powder Coat: TBD Per Quote: 145087 MEDIA TECH</p> <p>Tag For BOOK RETURN MEDIA CENTER</p>	1	1,568.16	1,568.16
<p>23 MCD-DBTL-1824-24 - Media Technologies MCD-DBTL-1824-24 960-203769-000 Depressible Platform Book Truck, 18"Dx24.25"Wx24"H HPL construction with 3mm PVC edge banding, spring-loaded platform lift mechanism. HPL: Formica Greyed Oak 5791-PG PVC: TBD</p> <p>Per Quote: 145087 MEDIA TECH</p> <p>Tag For BOOK TRUCK MEDIA CENTER</p>	1	1,183.60	1,183.60
<p>24 990-001210-000 - Media Technologies Upcharge for Premium Laminate</p> <p>Per Quote: 145087 MEDIA TECH</p>	1	1,072.70	1,072.70
<p>25 FTDJ-36-COM - Media Technologies FTDJ-36-G7 Full Time Junior Ottoman, 36"Diax16"H, Round Upholstered seat, grade 7 fabric w/ 2"T high density foam on 1"T assembled frame w/ black self-leveling glides COM: Designtex Big Dot 3525-403 Indigo</p>	2	674.08	1,348.16

TITLE OF PRODUCT TRANSFERS UPON RECEIPT BY CUSTOMER.

ACCEPTED BY _____ TITLE _____ DATE _____

Description	Quantity	Unit Price	Extended Price
25 MEDIA TECH Tag For OTTOMAN MEDIA CENTER			
26 3535-403 - Designtex Big Dot Upholstery Color: Indigo Repeat: None DESIGNTEX	5	82.86	414.30
27 CBLOX-17-17-COM - Media Technologies CBLOX-17-17-G7 Blox Seating - Cylinder 17"Dia x 17"H, Grade 7 high-density foam interior, grade 7 fabric exterior - Cylinder shape COM: Designtex Big Dot 3525-403 Indigo MEDIA TECH Tag For F1 FLOWER MEDIA CENTER	2	239.36	478.72
28 3535-403 - Designtex Big Dot Upholstery Color: Indigo Repeat: None DESIGNTEX	3	82.86	248.58
29 PBLOX-17-17-COM - Media Technologies PBLOX-17-17-G7 Blox Seating - Pac-Man 17"Diax17"H, Grade 7 high-density foam interior, grade 7 fabric exterior - Pac-Man shape COM: Momentum Nifty Adobe Per Quote: 145087 MEDIA TECH Tag For F-2 FLOWER MEDIA CENTER	8	234.08	1,872.64
30 YARDS - MOMENTUM NIFTY UPHOLSTERY COLOR: ADOBE REPEAT: NONE MOMENTUM	10.50	55.71	584.96
31 CHAM-29670 - MIEN CHAMELEON WEDGE POUF DUO COLOR FABRIC: GRADE 3/10 MIEN CO Tag For S-1 MEDIA CENTER	6	1,933.75	11,602.50
32 CHAM-28050 - MIEN CHAMELEON SQUARE POUF DUO COLOR FABRIC: GRADE 3/10 MIEN CO Tag For S-2 MEDIA CENTER	2	1,714.05	3,428.10
33 CHAM-28155 - MIEN CHAMELEON SQUARE PUOF DUO COLOR	2	1,589.25	3,178.50

TITLE OF PRODUCT TRANSFERS UPON RECEIPT BY CUSTOMER.

ACCEPTED BY _____ TITLE _____ DATE _____

Description	Quantity	Unit Price	Extended Price
33 FABRIC: GRADE 3/10 MIEN CO Tag For S-3 MEDIA CENTER			
34 CHAM-22378 - MIEN CHAMELEON RORUND INSIDE 29 DUO COLOR FABRIC: GRADE 3/10 MIEN CO Tag For S-3 MEDIA CENTER	6	2,477.15	14,862.90
35 AC-64199-10 - ARC-COM BOCCE AC-64199 Ocean #10 COM UPHOLSTERY FOR MIEN LOUNGE ARC-COM	47	71.36	3,353.92
36 SMLBR21004 - Booktruck, Six Sloping Shelf with Six Book Supports, 18"D x 36"W x 43"H Cart Finish: Smith System Paint NV - NAVY Divider Finish: Smith System Plastic SMOKE - SMOKE SMITH SYST Tag For MEDIA CENTER ST/6SS-D	4	426.00	1,704.00
Sub Total			100,037.90
Total			100,037.90
37 LOT - PROJECT MANAGEMENT FEES 16 HOURS X \$70 NBS TROY	1	1,120.00	1,120.00
38 LOT - NON UNION STRAIGHT TIME LABOR TO RECEIVE AND DELIVER NEW PRODUCT TO THE JOB SITE ALL WORK TO BE DONE AT ONE TIME ROSE MOVIN	1	1,984.00	1,984.00
39 LOT - NON UNION STRAIGHT TIME LABOR TO INSTALL NEW PRODUCT PER PRINT ALL WORK TO BE DONE AT ONE TIME PRICING DOES NOT INCLUDE THE REMOVAL OF EXISTING PRODUCT ROSE MOVIN	1	13,798.00	13,798.00
40 MONTHLY - MONTHLY STORAGE FEES TO HOLD FURNITURE AT WAREHOUSE. PRODUCT TO ARRIVE JULY 2022 TO AVOID PRICE INCREASES - WILL NEED STORAGE FOR THE MONTHS OF AUGUST, SEPTEMBER & OCTOBER	3	1,737.00	5,211.00

TITLE OF PRODUCT TRANSFERS UPON RECEIPT BY CUSTOMER.



2595 Bellingham • Troy, MI 48083 • 248.823.5400 • 248.823.5401 Fax
 2211 Old Earhart Rd. Ste.190 • Ann Arbor, MI 48105 • 248.823.5400 • 248.823.5401 Fax
 3201 Pine Tree Rd. Ste. A • Lansing, MI 48911 • 517.886.0072 • 248.823.5401 Fax
 5160 Alliance Dr. • Bay City, MI 48706 • 989.895.8574 • 989.895.8545 Fax
 4 North St. Clair St. • Toledo, OH 43604 • 419.662.2040 • 248.823.5401 Fax

Quotation 347548
 Page 9 / 9 (cont'd)

yourNBS.com

Remit Payments to: NBS, 6973 Reliable Parkway, Chicago, IL 60686

Description	Quantity	Unit Price	Extended Price
40 WILL BE INVOICED MONTHLY FOR THE MONTHS USED ROSE MOVIN			

Quotation Totals			
Sub Total			177,666.58
ARC-COM FREIGHT			235.00
MIEN CO FREIGHT			3,180.00
MEDIA TECH FREIGHT			1,375.00
SMITH SYST FREIGHT			3,395.00
DESIGNTEX FREIGHT			50.00
MOMENTUM FREIGHT			55.00
Grand Total			185,956.58

End of Quotation

TITLE OF PRODUCT TRANSFERS UPON RECEIPT BY CUSTOMER.

ACCEPTED BY _____ TITLE _____ DATE _____



2595 Bellingham • Troy, MI 48083 • 248.823.5400 • 248.823.5401 Fax
 2211 Old Earhart Rd. Ste.190 • Ann Arbor, MI 48105 • 248.823.5400 • 248.823.5401 Fax
 3201 Pine Tree Rd. Ste. A • Lansing, MI 48911 • 517.886.0072 • 248.823.5401 Fax
 5160 Alliance Dr. • Bay City, MI 48706 • 989.895.8574 • 989.895.8545 Fax
 4 North St. Clair St. • Toledo, OH 43604 • 419.662.2040 • 248.823.5401 Fax

Quotation 347593

Quote Date 03/14/22

Customer Order

Project 212190

Customer L00002

Terms NET 10 DAYS

Expiration Date

Account Representative MONIQUE DUGAN

yourNBS.com

Remit Payments to: NBS, 6973 Reliable Parkway, Chicago, IL 60686

Quote To

Livonia Public Schools
 15125 FARMINGTON RD
 LIVONIA, MI, 48154-5413

Ship To

PHILLIP FRANCIS
 Kennedy Elementary School
 14201 HUBBARD ST
 Media Center
 LIVONIA, MI, 48154-4133

Phone +1 (734) 744-2554

pfrancis@livoniapublicschools.org

Sales Location Troy

THE FOLLOWING CONTRACTS HAVE BEEN USED FOR PRICING ON THIS QUOTE:

NCPA
 OMNIA
 E&I

PO REQUIRED TO PLACE ORDER

PLEASE NOTE: STEELCASE & SMITH SYSTEM ARE HAVING PRICE INCREASES ON APRIL 18TH, THIS QUOTE DOES NOT REFLECT INCREASE

PRICING DOES NOT INCLUDE THE REMOVAL OF EXISTING PRODUCT

PRICING IS VALID FOR 30 DAYS

LEAD TIME: 14-16 WEEKS FROM RECEIPT OF PO

30 DAYS OF FREE STORAGE IS INCLUDED IN YOUR PRICING - IF THERE ARE ANY CONSTRUCTION DELAYS AND STORAGE IS REQ THE ADDITIONAL COSTS WOULD BE INVOICED TO LPS.

Description	Quantity	Unit Price	Extended Price
CLASSROOMS			
1 N45BPR - CINCH,PLASTIC BACK,PLASTIC SEAT,MOBILE, PKG 1 BACK PLASTIC COLOR: P06: PEBBLE SEAT PLASTIC COLOR: P06: PEBBLE PAINT: 501: PLATINUM METALLIC CASTER:	81	241.50	19,561.50

TITLE OF PRODUCT TRANSFERS UPON RECEIPT BY CUSTOMER.

ACCEPTED BY _____ TITLE _____ DATE _____

Description	Quantity	Unit Price	Extended Price
1 C4: SOFT DUAL WHEEL, BLACK NATIONAL Tag For CLASSROOMS CH-1 Qty Description <hr/> 45 COMPUTER CLASSROOM 36 MEDIA CLASSROOM			
2 N45MMR - CINCH, ARMS, PKG 1, BLACK NATIONAL Tag For CLASSROOMS CH-1 Qty Description <hr/> 45 COMPUTER CLASSROOM 36 MEDIA CLASSROOM	81	75.44	6,110.64
3 SMENTNL2472 - Elemental; Table-Nest and fold, With casters, 24D x 72W Worksurface Finish: Smith System Laminate 494360 - CLASSIC LINEN LAMINATE Edge Type: D-1 1/4in Top w 4mm TMld Edge Finish: Smith System T-Mold CHP - CHAMPAGNE T MOLD Leg Finish: Smith System Paint PLT - Platinum Height: EJ - Adjustable Height SMITH SYST Tag For CLASSROOMS 24/72-EJ Qty Description <hr/> 15 COMPUTER CLASSROOM	15	710.40	10,656.00
Sub Total			36,328.14
Total			36,328.14
4 SMENTNL3072 - Elemental; Table-Nest and fold, With casters, 30D x 72W Worksurface Finish: Smith System Laminate 494360 - CLASSIC LINEN LAMINATE Edge Type: D-1 1/4in Top w 4mm TMld Edge Finish: Smith System T-Mold CHP - CHAMPAGNE T MOLD Leg Finish: Smith System Paint PLT - Platinum Height: EJ - Adjustable Height SMITH SYST Tag For 30/72-EJ MEDIA CLASSROOM	6	747.60	4,485.60

TITLE OF PRODUCT TRANSFERS UPON RECEIPT BY CUSTOMER.

yourNBS.com

Remit Payments to: NBS, 6973 Reliable Parkway, Chicago, IL 60686

Description	Quantity	Unit Price	Extended Price
IDEA LAB			
5 SMEMTEL60TR - Elemental; Table-Trapezoid, 30D x 60W Worksurface Finish: Smith System Laminate 494360 - CLASSIC LINEN LAMINATE Edge Type: D-1 1/4in Top w 4mm TMld Edge Finish: Smith System T-Mold ORG - ORANGE T MOLD Leg Finish: Smith System Paint PLT - Platinum Height: EA - Adjustable Height SMITH SYST Tag For IDEA LAB 30/60-EJ	6	321.60	1,929.60
6 SMINC17577 - Interchange; 3 inch dual wheel casters-Pack of 4, Locking, Colorful Caster Finish: Smith System Plastic ORANGE - Orange SMITH SYST Tag For IDEA LAB CSTR/4	6	72.60	435.60
7 SMPLN25212BUTCHER - Planner; Studio-Butcher table, Fixed height, With casters, 36D x 72W x 29H Leg Finish: SMITH SYSTEM PAINT OR - ORANGE SMITH SYST Tag For IDEA LAB BT-36/72	2	1,305.60	2,611.20
8 SMPLN25271BUTCHER - Planner; Studio-Single bench, Butcher block, For 72W table, 12D x 58W Leg Finish: SMITH SYSTEM PAINT OR - ORANGE SMITH SYST Tag For IDEA LAB 12/58	4	561.00	2,244.00
9 SMCSC612008000 - Cascade Mega-Cabinet-Open, 8-3" SW totes & shelves, casters Edge Panel Configuration: P- Pltnm Body w/Solid End Pnls End Panel Finish: Smith System Paint OR - ORANGE SMITH SYST Tag For IDEA LAB 43/43-T-S	1	1,188.60	1,188.60
10 SMCSC610012060 - Cascade Mega-Cabinet-Open, 12-3" & 6-6" SW totes, casters Edge Panel Configuration: P- Pltnm Body w/Solid End Pnls End Panel Finish: Smith System Paint OR - ORANGE	1	1,159.20	1,159.20

TITLE OF PRODUCT TRANSFERS UPON RECEIPT BY CUSTOMER.

ACCEPTED BY _____ TITLE _____ DATE _____

Description	Quantity	Unit Price	Extended Price
10 SMITH SYST Tag For IDEA LAB 43/43-TSW			
11 SMCSCB10008040 - Cascade Mega-Cabinet-Open, 8-3" & 4-6" EW totes, casters Edge Panel Configuration: P- Pltnm Body w/Solid End Pnlis End Panel Finish: Smith System Paint OR - ORANGE SMITH SYST Tag For IDEA LAB 43/43-TEW	1	1,201.20	1,201.20
12 SMOODLE31 - Oodle; Stool-Stack of 3, With 1 movement disc Oodle Finish: Smith System Plastic PLATINUM - Platinum SMITH SYST Tag For IDEA LAB OODLE-P (STACK 3-HIGH) *COMES AS A PACK OF 3	6	149.40	896.40
13 SMOODLE31 - Oodle; Stool-Stack of 3, With 1 movement disc Oodle Finish: Smith System Plastic CHARCOAL - Charcoal SMITH SYST Tag For IDEA LAB OODLE-C (STACK 3-HIGH) *COMES AS A PACK OF 3	6	149.40	896.40
14 SMOODLE31 - Oodle; Stool-Stack of 3, With 1 movement disc Oodle Finish: Smith System Plastic ORANGE - Orange SMITH SYST Tag For IDEA LAB OODLE-O (STACK 3-HIGH) *COMES AS A PACK OF 3	6	149.40	896.40
15 UPCHARGE - HIGH GLOSS LAMINATE UPCHARGE SMITH SYST	1	492.00	492.00
Sub Total			13,950.60
Total			13,950.60
MEDIA CENTER			
16 CHAM-29599 - MiEN Chameleon CHAM-29599 Wedge Pouf, Duo Color (Fabric Top, Steel Feet, Customer's Own Material, Grade 04) Fabric A Supplier: Customer's Own Material Fabric A Selection: Customer's Own Material: *PENDING TESTING* Arc	6	1,541.15	9,246.90

TITLE OF PRODUCT TRANSFERS UPON RECEIPT BY CUSTOMER.

ACCEPTED BY _____ TITLE _____ DATE _____

yourNBS.com

Remit Payments to: NBS, 6973 Reliable Parkway, Chicago, IL 60686

Description	Quantity	Unit Price	Extended Price
<p>16 Com – Angle AC-64264 color Citrus #5 Fabric B Supplier: Momentum Fabric B Selection: TBD Fabric B Selection Laminate A Selection: No Laminate MIEN CO Tag For MEDIA CENTER S-2</p>			
<p>17 CHAM-27979 - MiEN Chameleon CHAM-27979 Square Pouf Duo Color (Fabric Top, Steel Feet Customer's Own Material, Grade 04) Fabric A Supplier: Customer's Own Material Fabric A Selection: Customer's Own Material: *PENDING TESTING* Arc Com – Angle AC-64264 color Citrus #5 Fabric B Supplier: Momentum Fabric B Selection: TBD Fabric B Selection Laminate A Selection: No Laminate MIEN CO Tag For S-3 MEDIA CENTER</p>	2	1,376.05	2,752.10
<p>18 AC-64264 - ARC COM ANGLE UPHOLSTERY COLOR: CITRUS #5 REPEAT:28"H X 16"V ARC-COM</p>	17	64.21	1,091.57
<p>19 990-00001-000 - WALL MOUNTED COUNTER WITH CABINET XFC-A2490-13, Custom Floating Counter, 90"L x 24"D x 13"H. Unit to be HPL construction. To have 30"W x 4"H section on left with grommet. Center section to be 30"W x 13"H w/ 2 locking doors and grommet in top and rear. Right hand section to be on same plane as cupboard storage 30"W x 4"H. Unit to be wall mounted w/ no supports. Refer to dealer provided drawing. HPL Body (shown as blue excluding doors): Nevamar – Spicy Flavors S8002T HPL Face (shown as white & doors also): Wilsonart- Crystal D388-60 Pull: TBD PER QUOTE: 145519 MEDIA TECH Tag For WALK-UP COUNTER MEDIA CENTER</p>	1	3,511.20	3,511.20
<p>20 H11-4212-HPL Back - Media Technology H11-4212-HPL Back 960-032124-000 Benchmark, HPL Shelving Single Faced Starter 37"Wx12"Dx42"H HPL construction/3mm PVC edges, HPL back, 1 fixed & 2 adjustable shelves HPL: Formica Greyed Oak 5791-PG</p>	3	550.00	1,650.00

TITLE OF PRODUCT TRANSFERS UPON RECEIPT BY CUSTOMER.

ACCEPTED BY _____ TITLE _____ DATE _____

Description	Quantity	Unit Price	Extended Price
20 PVC: TBD Per Quote: 145513 MEDIA TECH Tag For 36W42H-S MEDIA CENTER			
21 H11-4212A-HPL Back - Media Technologies H11-4212A-HPL Back 960-032125-000 Benchmark, HPL Shelving Single Faced Adder 36"Wx12"Dx42"H HPL construction/3mm PVC edges, HPL back, 1 fixed & 2 adjustable shelves. Per Quote: 145513 MEDIA TECH Tag For 36W42H-A MEDIA CENTER	7	473.88	3,317.16
22 31-LK - Media Technologies 31-LK 990-000614-000 Leveling Kit for use on 11 Series shelving 800-000091-000 + 800-000007-000 1 set needed for an adder 2 sets needed for a starter MEDIA TECH	13	5.72	74.36
23 H11-4824-HPL BACK - Media Technologies H11-4824-MOB-HPL BACK 960-180534-000 Benchmark, HPL Shelving Double Faced Starter 37"Wx24"Dx48"H HPL construction/3mm PVC edges, HPL back, 2 fixed & 4 adjustable shelves, 4 casters HPL: Formica Greyed Oak 5791-PG PVC: TBD MEDIA TECH Tag For DBL SIDED MEDIA CENTER	40	935.44	37,417.60
24 DISP-4724 - Media Technologies DISP-4724 960-283747-000 Display End Panel, 3 opening, 24"Wx3-1/2"Dx47-1/2"H **to mount on H11-4824 Double Sided Bookcases. HPL/3mm PVC construction HPL: Formica Greyed Oak 5791-PG HPL Interior Back Panel PVC: TBD Per Quote: 145513 MEDIA TECH Tag For DISPLAY MEDIA CENTER	10	629.20	6,292.00
25 NST-C2460L-84-COM - Media Technologies Nest, Single Faced Lounge Cove, 24-3/4"D x 59-3/4"W x 84"H NST-C2460L-84-COM 960-280582-000 HPL construction with 3mm PVC edge banding. Fully upholstered base seat with (2) 33"W x 65"H side cushions,	2	2,887.72	5,775.44

TITLE OF PRODUCT TRANSFERS UPON RECEIPT BY CUSTOMER.

ACCEPTED BY _____ TITLE _____ DATE _____

Description	Quantity	Unit Price	Extended Price
<p>25 measuring 3" thick at the top to 12" thick at the base. The base assembly sits on 4 self-leveling glides. COM Fabric: -Seat Upholstery: Momentum Nifty color Pool -Side Wall Upholstery: Momentum Silica Bauble color Caribe COM Seat: 2 yards each COM Sides: 3 yards each</p> <p>Per Quote: 145513 MEDIA TECH Tag For NEST MEDIA CENTER</p>			
<p>26 09166078 - MOMENTUM NIFTY COLOR POOL Pattern Repeat: Non-Repeat SEAT COM YARDAGE ON MEDIA TECH NEST - 2 YARDS NEEDED PER UNIT MOMENTUM</p>	4	55.71	222.84
<p>27 09489533 - Momentum Silica Bauble Color Caribe Pattern Repeat: 20-3/4" V, 18-1/4" H SIDE COM YARDAGE ON MEDIA TECH NEST - 3 YARDS NEEDED PER UNIT MOMENTUM</p>	6	100.00	600.00
<p>28 ND-75DX-MOB - Media Technologies ND-75DX-MOB 970-007136-000 Nomad Desk, 24"Dx75"Wx29"H Mobile 29"H worksurface with grommet, no Transaction top,3mm PVC Edge, (5) locking casters. A: HPL Main (large) Front: WA Ocean D52K-18 B: HPL Front Accent (small) Panel: Formica Greyed Oak 5791-PG C: HPL End Panel: Formica Greyed Oak 5791-PG D: HPL Work Surface & Trans Top: Pionite White Fiesta MW550-S D: PVC Work Surface & Trans Top: TBD E: Powder Coat: TBD</p> <p>Per Quote: 145513 MEDIA TECH Tag For NOMAD MEDIA CENTER</p>	1	3,242.36	3,242.36
<p>29 ND-40BR-MOB - Media Technologies ND-40BR-MOB 970-179190-000 Nomad Book Return, 30"Dx40"Wx29"H, Mobile HPL/3mm PVC top w/ radiused corners, book return slot in top, Curved face, steel end frames w/ floating HPL panel, 4 locking casters. For use w/ MCD-DBTL1824-24 Depressible Book Truck A: HPL Front: Formica Greyed Oak 5791-PG C: HPL End Panel: Formica Greyed Oak 5791-PG D: HPL Work Surface: Pionite White Fiesta MW550-S D: PVC Work Surface: TBD</p> <p>Per Quote: 145513</p>	1	1,568.16	1,568.16

TITLE OF PRODUCT TRANSFERS UPON RECEIPT BY CUSTOMER.

yourNBS.com

Remit Payments to: NBS, 6973 Reliable Parkway, Chicago, IL 60686

Description	Quantity	Unit Price	Extended Price
29 MEDIA TECH Tag For BOOK RETURN MEDIA CENTER			
30 MCD-DBTL-1824-24 - Media Technologies MCD-DBTL-1824-24 960-203769-000 Depressible Platform Book Truck, 18"Dx24.25"Wx24"H HPL construction with 3mm PVC edge banding, spring-loaded platform lift mechanism. HPL: Formica Greyed Oak 5791-PG PVC: TBD Per Quote: 145513 MEDIA TECH Tag For BOOK TRUCK MEDIA CENTER	1	1,183.60	1,183.60
31 CBLOX-17-17-COM - Media Technologies CBLOX-17-17-COM 980-002970-000 Blox Seating - Cylinder 17"Dia x 17"H, high-density foam interior, COM fabric exterior - Cylinder shape COM Fabric: Momentum Nifty Pool COM: 1.3 yards each Per Quote: 145513 MEDIA TECH Tag For F1 FLOWER MEDIA CENTER	1	239.36	239.36
32 09166078 - MOMENTUM NIFTY COLOR POOL Pattern Repeat: Non-Repeat SEAT COM YARDAGE ON MEDIA TECH CBLOX-17-17-COM - 1.3 YARDS NEEDED PER UNIT MOMENTUM	1.50	55.71	83.57
33 PBLOX-17-17-COM - Media Technologies PBLOX-17-17-COM Blox Seating - Pac-Man 17"Diax17"H, high-density foam interior, fabric exterior - Pac-Man shape COM Fabric: Momentum Beeline Sundance Per Quote: 145513 MEDIA TECH Tag For F-2 FLOWER MEDIA CENTER	4	234.08	936.32
34 09152878 - Momentum Beeline color, Sundance Pattern Repeat: Non-Repeat SEAT COM YARDAGE ON MEDIA TECH PBLOX-17-17-COM 1.3 YARDS NEEDED PER UNIT MOMENTUM	5.50	60.71	333.91
35 FTDJ-36-COM - Media Technologies FTDJ-36-COM 980-008240-001 Full Time Junior Ottoman, 36"Diax16"H, Round Upholstered seat, COM Fabric / 2"T high density foam on 1"T	1	674.08	674.08

TITLE OF PRODUCT TRANSFERS UPON RECEIPT BY CUSTOMER.

ACCEPTED BY _____ TITLE _____ DATE _____

yourNBS.com

Remit Payments to: NBS, 6973 Reliable Parkway, Chicago, IL 60686

Description	Quantity	Unit Price	Extended Price
35 assembled frame w/ black self-leveling glides Fabric: Momentum Nifty Pool COM: 2.5 yards each Per Quote: 145513 MEDIA TECH Tag For OTTOMAN MEDIA CENTER			
36 09166078 - MOMENTUM NIFTY COLOR POOL Pattern Repeat: Non-Repeat SEAT COM YARDAGE ON MEDIA TECH FTDJ-36-COM - 2.5 YARDS NEEDED PER UNIT MOMENTUM	2.50	55.71	139.28
37 990-001210-000 - Media Technologies Upcharge for Premium Laminate Per Quote: 145087 MEDIA TECH	1	1,094.72	1,094.72
38 SS-17-24-COM - Media Technologies SS-17-24-COM 980-002937-000 Shroom Stool 24"D x 17"H Unit to be upholstered with Grade COM fabric. Cap is 24" in diameter with flared fabric underneath. The stem is outfitted with a polyvinyl base to prevent fabric wearing on the base of the stool. Fabric Cap: Momentum Halo Marble Fabric Base: Momentum Beeline Sundance COM Cap: 1.5 yards each COM Stem: .5 yards each. Per Quote: 145513 MEDIA TECH Tag For SHROOM MEDIA CENTER	3	427.24	1,281.72
39 09192258 - Momentum Halo color, Marble Pattern Repeat: 20-1/2" V, 17-3/8" H CAP COM YARDAGE ON MEDIA TECH FTSJ-2424-COM - 1.5 YARDS NEEDED PER UNIT MOMENTUM	4.50	100.71	453.20
40 09152878 - Momentum Beeline color, Sundance Pattern Repeat: Non-Repeat STEM COM YARDAGE ON MEDIA TECH SS-17-24-COM .5 YARDS NEEDED PER UNIT MOMENTUM	1.50	60.71	91.07
41 FTSJ-2424-COM - Media Technologies Full Time Junior Ottoman, 24" x 24" x 16"H, Square FTSJ-2424-COM 980-008289-001 Upholstered seat, COM fabric w/ 2"T high density foam on 1"T assembled frame, self leveling glides	2	554.40	1,108.80

TITLE OF PRODUCT TRANSFERS UPON RECEIPT BY CUSTOMER.

ACCEPTED BY _____ TITLE _____ DATE _____

yourNBS.com

Remit Payments to: NBS, 6973 Reliable Parkway, Chicago, IL 60686

Description	Quantity	Unit Price	Extended Price
41 COM: Fabric: Momentum Halo Dewdrop COM: 1.75 yards each Per Quote: 145513 MEDIA TECH Tag For MEDIA CENTER SQRE			
Sub Total			84,381.32
Total			84,381.32
42 09192225 - Momentum Halo color, Dewdrop Pattern Repeat: 20-1/2" V, 17-3/8" H SEAT COM YARDAGE ON MEDIA TECH FTSJ-2424-COM - 1.75 YARDS NEEDED PER UNIT MOMENTUM	3.50	100.71	352.49
43 LOT - PROJECT MANAGEMENT FEES 16 HOURS X \$70 NBS TROY	1	1,120.00	1,120.00
44 LOT - NON UNION STRAIGHT TIME LABOR TO RECEIVE AND DELIVER NEW PRODUCT TO THE JOB SITE ALL WORK TO BE DONE AT ONE TIME ROSE MOVIN	1	1,840.00	1,840.00
45 LOT - NON UNION STRAIGHT TIME LABOR TO INSTALL NEW PRODUCT PER PRINT ALL WORK TO BE DONE AT ONE TIME PRICING DOES NOT INCLUDE THE REMOVAL OF EXISTING PRODUCT ROSE MOVIN	1	12,491.00	12,491.00
46 MONTHLY - MONTHLY STORAGE FEES TO HOLD FURNITURE AT WAREHOUSE. PRODUCT TO ARRIVE JULY 2022 TO AVOID PRICE INCREASES - WILL NEED STORAGE FOR THE MONTHS OF AUGUST, SEPTEMBER & OCTOBER WILL BE INVOICED MONTHLY FOR THE MONTHS USED ROSE MOVIN	3	1,532.00	4,596.00

Quotation Totals	
Sub Total	159,545.15
MEDIA TECH FREIGHT	1,375.00
MIEN CO FREIGHT	1,154.00
SMITH SYST FREIGHT	4,323.00

TITLE OF PRODUCT TRANSFERS UPON RECEIPT BY CUSTOMER.

ACCEPTED BY _____ TITLE _____ DATE _____



2595 Bellingham • Troy, MI 48083 • **248.823.5400** • 248.823.5401 Fax
 2211 Old Earhart Rd. Ste.190 • Ann Arbor, MI 48105 • **248.823.5400** • 248.823.5401 Fax
 3201 Pine Tree Rd. Ste. A • Lansing, MI 48911 • **517.886.0072** • 248.823.5401 Fax
 5160 Alliance Dr. • Bay City, MI 48706 • **989.895.8574** • 989.895.8545 Fax
 4 North St. Clair St. • Toledo, OH 43604 • **419.662.2040** • 248.823.5401 Fax

Quotation 347593
Page 11 / 11 (cont'd)

yourNBS.com **Remit Payments to:** NBS, 6973 Reliable Parkway, Chicago, IL 60686

MOMENTUM FREIGHT	150.00
ARC-COM FREIGHT	85.00
Grand Total	166,632.15

End of Quotation

TITLE OF PRODUCT TRANSFERS UPON RECEIPT BY CUSTOMER.

ACCEPTED BY _____ TITLE _____ DATE _____



2595 Bellingham • Troy, MI 48083 • 248.823.5400 • 248.823.5401 Fax
 2211 Old Earhart Rd. Ste.190 • Ann Arbor, MI 48105 • 248.823.5400 • 248.823.5401 Fax
 3201 Pine Tree Rd. Ste. A • Lansing, MI 48911 • 517.886.0072 • 248.823.5401 Fax
 5160 Alliance Dr. • Bay City, MI 48706 • 989.895.8574 • 989.895.8545 Fax
 4 North St. Clair St. • Toledo, OH 43604 • 419.662.2040 • 248.823.5401 Fax

Quotation 346428

Quote Date 03/14/22

Customer Order

Project 212188

Customer L00002

Terms NET 10 DAYS

Expiration Date

Account Representative MONIQUE DUGAN

yourNBS.com

Remit Payments to: NBS, 6973 Reliable Parkway, Chicago, IL 60686

Quote To

Livonia Public Schools
 15125 FARMINGTON RD
 LIVONIA, MI, 48154-5413

Ship To

PHILLIP FRANCIS
 Randolph Elementary-3148
 14470 Norman Street
 Media Center
 Livonia, MI, 48154-4731

Phone +1 (734) 744-2554

pfrancis@livoniapublicschools.org

Sales Location Troy

QUOTE FOR ALL VENDORS EXCEPT MEDIA TECHNOLOGIES

THE FOLLOWING CONTRACTS HAVE BEEN USED FOR PRICING ON THIS QUOTE:

- NCPA
- OMNIA
- E&I

PO REQUIRED TO PLACE ORDER

PLEASE NOTE: STEELCASE & SMITH SYSTEM ARE HAVING PRICE INCREASES ON APRIL 18TH, THIS QUOTE DOES NOT REFLECT INCREASE

PRICING DOES NOT INCLUDE THE REMOVAL OF EXISTING PRODUCT

PRICING IS VALID FOR 30 DAYS

LEAD TIME: 14-16 WEEKS FROM RECEIPT OF PO

30 DAYS OF FREE STORAGE IS INCLUDED IN YOUR PRICING - IF THERE ARE ANY CONSTRUCTION DELAYS AND STORAGE IS REQ THE ADDITIONAL COSTS WOULD BE INVOICED TO LPS.

Description	Quantity	Unit Price Sell/List/Disc	Extended Price
CLASSROOM			
1 N45BPR - CINCH,PLASTIC BACK,PLASTIC SEAT,MOBILE, PKG 1	36	241.50	8,694.00
BACK PLASTIC COLOR:		525.00	
P10: BLACK		54.00%	
SEAT PLASTIC COLOR:			
P10: BLACK			
PAINT:			
501: PLATINUM METALLIC			

TITLE OF PRODUCT TRANSFERS UPON RECEIPT BY CUSTOMER.

ACCEPTED BY _____ TITLE _____ DATE _____

yourNBS.com

Remit Payments to: NBS, 6973 Reliable Parkway, Chicago, IL 60686

Description	Quantity	Unit Price Sell/List/Disc	Extended Price
1 CASTER: C4: SOFT DUAL WHEEL,BLACK NATIONAL Tag For CLASSROOM CH-1			
2 N45MAR - CINCH,ARM SET,PLATINUM METALLIC,PKG 1 NATIONAL Tag For CLASSROOM CH-1	36	91.54 199.00 54.00%	3,295.44
3 N45APR - CINCH,PLASTIC BACK,PLASTIC SEAT,PKG 1 BACK PLASTIC COLOR: P10: BLACK SEAT PLASTIC COLOR: P10: BLACK PAINT: 501: PLATINUM METALLIC GLIDE: C30: SOFT GLIDE NATIONAL Tag For CLASSROOM CH-2	12	182.62 397.00 54.00%	2,191.44
4 N45MAR - CINCH,ARM SET,PLATINUM METALLIC,PKG 1 NATIONAL Tag For CLASSROOM CH-2	12	91.54 199.00 54.00%	1,098.48
5 SMENTNL2472 - Elemental; Table-Nest and fold, With casters, 24D x 72W Worksurface Finish: Smith System Laminate 494360 - CLASSIC LINEN LAMINATE Edge Type: D-1 1/4in Top w 4mm TMld Edge Finish: Smith System T-Mold CHP - CHAMPAGNE T MOLD Leg Finish: Smith System Paint PLT - Platinum Height: EJ - Adjustable Height SMITH SYST Tag For CLASSROOM 24/72-EJ **HIGH GLOSS LAMINATE TOP: Wilsonart Classic Linen 4943-01 High Gloss Finish	16	768.60 1,281.00 40.00%	12,297.60

TITLE OF PRODUCT TRANSFERS UPON RECEIPT BY CUSTOMER.

ACCEPTED BY _____ TITLE _____ DATE _____

yourNBS.com

Remit Payments to: NBS, 6973 Reliable Parkway, Chicago, IL 60686

Description	Quantity	Unit Price Sell/List/Disc	Extended Price
Sub Total			27,576.96
Total			27,576.96
IDEA LAB			
6 SMEMTEL60TR - Elemental; Table-Trapezoid, 30D x 60W Worksurface Finish: Smith System Laminate 494360 - CLASSIC LINEN LAMINATE Edge Type: D-1 1/4in Top w 4mm TMld Edge Finish: Smith System T-Mold CER - CERULEAN T MOLD Leg Finish: Smith System Paint PLT - Platinum Height: EA - Adjustable Height SMITH SYST Tag For IDEA LAB 30/60-EJ **HIGH GLOSS LAMINATE TOP: Wilsonart Classic Linen 4943-01 High Gloss Finish	6	321.60 536.00 40.00%	1,929.60
7 SMINC17577 - Interchange; 3 inch dual wheel casters-Pack of 4, Locking, Colorful Caster Finish: Smith System Plastic CERULEAN - Cerulean SMITH SYST Tag For IDEA LAB CSTR/4	6	72.60 121.00 40.00%	435.60
8 SMPLN25212BUTCHER - Planner; Studio-Butcher table, Fixed height, With casters, 36D x 72W x 29H Leg Finish: SMITH SYSTEM PAINT CE - CERULEAN SMITH SYST Tag For IDEA LAB BT-36/72	2	1,323.60 2,206.00 40.00%	2,647.20
9 SMPLN25271BUTCHER - Planner; Studio-Single bench, Butcher block, For 72W table, 12D x 58W Leg Finish: SMITH SYSTEM PAINT CE - CERULEAN SMITH SYST Tag For IDEA LAB 12/58	4	561.00 935.00 40.00%	2,244.00
10 SMOODLE31 - Oodle; Stool-Stack of 3, With 1 movement disc Oodle Finish: Smith System Plastic CERULEAN - Cerulean SMITH SYST Tag For IDEA LAB OODLE-B (STACK 3-HIGH) *COMES AS A PACK OF 3	6	149.40 249.00 40.00%	896.40

TITLE OF PRODUCT TRANSFERS UPON RECEIPT BY CUSTOMER.

ACCEPTED BY _____ TITLE _____ DATE _____

yourNBS.com

Remit Payments to: NBS, 6973 Reliable Parkway, Chicago, IL 60686

Description	Quantity	Unit Price Sell/List/Disc	Extended Price
11 SMOODLE31 - Oodle; Stool-Stack of 3, With 1 movement disc Oodle Finish: Smith System Plastic CHARCOAL - Charcoal SMITH SYST Tag For IDEA LAB OODLE-C (STACK 3-HIGH) *COMES AS A PACK OF 3	6	149.40 249.00 40.00%	896.40
12 SMOODLE31 - Oodle; Stool-Stack of 3, With 1 movement disc Oodle Finish: Smith System Plastic PLATINUM - Platinum SMITH SYST Tag For IDEA LAB OODLE-P (STACK 3-HIGH) *COMES AS A PACK OF 3	6	149.40 249.00 40.00%	896.40
Sub Total			9,945.60
Total			9,945.60
MEDIA CENTER			
13 CHAM-22196 - MiEN Chameleon - CHAM-22196 CURVED LOUNGE W/ BACK Round Inside 29, Duo Color (Customer's Own Material, No Wall Power) Fabric A Supplier : Customer's Own Material Fabric B Supplier : Customer's Own Material Fabric A Selection : Customer's Own Material Fabric B Selection : Customer's Own Material Per Quote: SO11512 MIEN CO Tag For S-1 MEDIA CENTER	6	1,905.80 2,932.00 35.00%	11,434.80
14 CHAM-29593 - MiEN Chameleon - CHAM-29593 CURVED BENCH Wedge Pouf, Duo Color (Customer's Own Material, Customer's Own Material, Fabric Top, Steel Feet) Laminate A Selection : No Laminate Fabric A Supplier : Customer's Own Material Fabric B Supplier : Customer's Own Material Fabric A Selection : Customer's Own Material Fabric B Selection : Customer's Own Material Per Quote: SO11512 MIEN CO Tag For S-2 MEDIA CENTER	6	1,463.80 2,252.00 35.00%	8,782.80

TITLE OF PRODUCT TRANSFERS UPON RECEIPT BY CUSTOMER.

ACCEPTED BY _____ TITLE _____ DATE _____

yourNBS.com

Remit Payments to: NBS, 6973 Reliable Parkway, Chicago, IL 60686

Description	Quantity	Unit Price Sell/List/Disc	Extended Price
15 AC-64199-10 - ARC-COM BOCCE AC-64199 Ocean #10 COM UPHOLSTERY FOR MIEN LOUNGE ARC-COM	67	71.36 0.00 0.00%	4,781.12
16 CUSTOM - WALL MOUNTED COUNTER WITH CABINET TO HOUSE MONITORS & SUPPIES FINISHES TBD PRIMEWAY Tag For WALK-UP COUNTER MEDIA CENTER	1	4,625.00 0.00 0.00%	4,625.00
17 SMLBR21004 - Booktruck, Six Sloping Shelf with Six Book Supports, 18"D x 36"W x 43"H Cart Finish: Smith System Paint CE - CERULEAN Divider Finish: Smith System Plastic SMOKE - SMOKE SMITH SYST Tag For MEDIA CENTER ST/6SS-D BOOK CART	3	426.00 710.00 40.00%	1,278.00
Sub Total			30,901.72
Total			30,901.72
MEDIA SOUTH			
18 SMEMTEL4242 - Elemental; Table-Square, 42D x 42W Worksurface Finish: Smith System Laminate 494360 - CLASSIC LINEN LAMINATE Edge Type: D-1 1/4in Top w 4mm TMld Edge Finish: Smith System T-Mold CHP - CHAMPAGNE T MOLD Leg Finish: Smith System Paint PLT - Platinum Height: EA - Adjustable Height SMITH SYST Tag For MEDIA SOUTH 42/42-AHL **HIGH GLOSS LAMINATE TOP: Wilsonart Classic Linen 4943-01 High Gloss Finish	6	321.60 536.00 40.00%	1,929.60
19 89N3016TRDL - MARNIA,30DIAX16H, TABLE,ROUND,LAMINATE LAMINATE COLOR: 405: DESIGNER WHITE PAINT COLOR: 503: SATIN NICKEL METALLIC NATIONAL	2	952.66 2,071.00 54.00%	1,905.32

TITLE OF PRODUCT TRANSFERS UPON RECEIPT BY CUSTOMER.

ACCEPTED BY _____ TITLE _____ DATE _____

yourNBS.com

Remit Payments to: NBS, 6973 Reliable Parkway, Chicago, IL 60686

Description	Quantity	Unit Price Sell/List/Disc	Extended Price
19 Tag For MEDIA SOUTH 30 DIA			
20 TS4TWP - Campfire; Table-Personal TOP OPT: *OPT:TOP SELECTION HPL TOP: STD:HPL TOP TOP-SURF: TOP SURFACE OLL01: *TOP-SURF:OLL01 PRICE GROUP 1 2900: MISC LAMINATE STEELCASE CORPORATION Laminate: 2511 -WINTER ON MAPLE STEELCASE Tag For MEDIA SOUTH 14/26	4	314.88 656.00 52.00%	1,259.52
21 TS31413M - Jenny; Chair-Round, Low, Multiple fabric INR BACK: 5999 MISC FABRIC ARC-COM FABRICS INC Purchaser: VENDOR Pattern: BOCCE Color: OCEAN #10 -64199 Direction: VERTICAL OUT BACK: 5999 MISC FABRIC ARC-COM FABRICS INC Purchaser: VENDOR Pattern: BOCCE Color: OCEAN #10 -64199 Direction: VERTICAL SEAT: BR01 BLACK ONYX STEELCASE Tag For MEDIA SOUTH JENNY	8	1,014.24 2,113.00 52.00%	8,113.92
22 N45BPR - CINCH,PLASTIC BACK,PLASTIC SEAT,MOBILE, PKG 1 BACK PLASTIC COLOR: P10: BLACK SEAT PLASTIC COLOR: P10: BLACK PAINT: 501: PLATINUM METALLIC CASTER: C4: SOFT DUAL WHEEL,BLACK NATIONAL	24	241.50 525.00 54.00%	5,796.00

TITLE OF PRODUCT TRANSFERS UPON RECEIPT BY CUSTOMER.

ACCEPTED BY _____ TITLE _____ DATE _____



2595 Bellingham • Troy, MI 48083 • 248.823.5400 • 248.823.5401 Fax
 2211 Old Earhart Rd. Ste.190 • Ann Arbor, MI 48105 • 248.823.5400 • 248.823.5401 Fax
 3201 Pine Tree Rd. Ste. A • Lansing, MI 48911 • 517.886.0072 • 248.823.5401 Fax
 5160 Alliance Dr. • Bay City, MI 48706 • 989.895.8574 • 989.895.8545 Fax
 4 North St. Clair St. • Toledo, OH 43604 • 419.662.2040 • 248.823.5401 Fax

yourNBS.com

Remit Payments to: NBS, 6973 Reliable Parkway, Chicago, IL 60686

Description		Quantity	Unit Price Sell/List/Disc	Extended Price
22	Tag For MEDIA SOUTH CH-3			
23	N45MAR - CINCH,ARM SET,PLATINUM METALLIC,PKG 1 NATIONAL Tag For MEDIA SOUTH CH-3	24	91.54 199.00 54.00%	2,196.96
Sub Total				21,201.32
Total				21,201.32
BOOTH TABLES				
24	TS4TBASE22 - Base, 22 dia BASE: 4799 PLATINUM METALLIC STEELCASE Tag For 22 BASE	4	202.40 440.00 54.00%	809.60
25	TS4THR3048 - Top-Table, Rectangle, High pressure laminate, 30D x 48W EDGE: 6695 MIDNIGHT TOP-SURF: 2900 MISC LAMINATE FORMICA Laminate: 464-58 -GRAYSTONE STEELCASE Tag For BOOTH TBL	2	210.68 458.00 54.00%	421.36
Sub Total				1,230.96
Total				1,230.96
26	LOT - PROJECT MANAGEMENT FEES 16 HOURS X \$70 NBS TROY	1	1,120.00 0.00 0.00%	1,120.00
27	LOT - NON UNION STRAIGHT TIME LABOR TO RECEIVE AND DELIVER NEW PRODUCT TO THE JOB SITE ALL WORK TO BE DONE AT ONE TIME ROSE MOVIN	1	1,571.00 0.00 0.00%	1,571.00
28	LOT - NON UNION STRAIGHT TIME LABOR TO INSTALL NEW PRODUCT PER PRINT ALL WORK TO BE DONE AT ONE TIME PRICING DOES NOT INCLUDE THE REMOVAL OF EXISTING PRODUCT ROSE MOVIN	1	9,730.00 0.00 0.00%	9,730.00

TITLE OF PRODUCT TRANSFERS UPON RECEIPT BY CUSTOMER.

ACCEPTED BY _____ TITLE _____ DATE _____



2595 Bellingham • Troy, MI 48083 • 248.823.5400 • 248.823.5401 Fax
 2211 Old Earhart Rd. Ste.190 • Ann Arbor, MI 48105 • 248.823.5400 • 248.823.5401 Fax
 3201 Pine Tree Rd. Ste. A • Lansing, MI 48911 • 517.886.0072 • 248.823.5401 Fax
 5160 Alliance Dr. • Bay City, MI 48706 • 989.895.8574 • 989.895.8545 Fax
 4 North St. Clair St. • Toledo, OH 43604 • 419.662.2040 • 248.823.5401 Fax

Quotation 346428
 Page 8 / 8 (cont'd)

yourNBS.com **Remit Payments to:** NBS, 6973 Reliable Parkway, Chicago, IL 60686

Quotation Totals

Sub Total	103,277.56
STEELCASE COM FABRIC LINE 21	2,445.00
MIEN CO FREIGHT	1,817.00
SMITH SYST FREIGHT	2,044.00
ARC-COM FREIGHT	335.00
STEELCASE OLL LINE 25	372.00
Grand Total	110,290.56

End of Quotation

TITLE OF PRODUCT TRANSFERS UPON RECEIPT BY CUSTOMER.

ACCEPTED BY _____ TITLE _____ DATE _____



2595 Bellingham • Troy, MI 48083 • 248.823.5400 • 248.823.5401 Fax
 2211 Old Earhart Rd. Ste.190 • Ann Arbor, MI 48105 • 248.823.5400 • 248.823.5401 Fax
 3201 Pine Tree Rd. Ste. A • Lansing, MI 48911 • 517.886.0072 • 248.823.5401 Fax
 5160 Alliance Dr. • Bay City, MI 48706 • 989.895.8574 • 989.895.8545 Fax
 4 North St. Clair St. • Toledo, OH 43604 • 419.662.2040 • 248.823.5401 Fax

Quotation 347696

Quote Date 03/14/22

Customer Order

Project 212186

Customer L00002

Terms NET 10 DAYS

Expiration Date

Account Representative MONIQUE DUGAN

yourNBS.com

Remit Payments to: NBS, 6973 Reliable Parkway, Chicago, IL 60686

Quote To

Livonia Public Schools
 15125 FARMINGTON RD
 LIVONIA, MI, 48154-5413

Ship To

PHILLIP FRANCIS
 Emerson Middle School
 29100 W CHICAGO ST
 Media Center
 LIVONIA, MI, 48150-3128

Phone +1 (734) 744-2554

pfrancis@livoniapublicschools.org

Sales Location Troy

THE FOLLOWING CONTRACTS HAVE BEEN USED FOR PRICING ON THIS QUOTE:

NCPA
 OMNIA
 E&I

PO REQUIRED TO PLACE ORDER

PLEASE NOTE: STEELCASE & SMITH SYSTEM ARE HAVING PRICE INCREASES ON APRIL 18TH, THIS QUOTE DOES NOT REFLECT INCREASE

PRICING DOES NOT INCLUDE THE REMOVAL OF EXISTING PRODUCT

PRICING IS VALID FOR 30 DAYS

LEAD TIME: 14-16 WEEKS FROM RECEIPT OF PO

30 DAYS OF FREE STORAGE IS INCLUDED IN YOUR PRICING - IF THERE ARE ANY CONSTRUCTION DELAYS AND STORAGE IS REQ THE ADDITIONAL COSTS WOULD BE INVOICED TO LPS.

Description	Quantity	Unit Price	Extended Price
CLASSROOM			
1 N45BPR - CINCH,PLASTIC BACK,PLASTIC SEAT,MOBILE, PKG 1 BACK PLASTIC COLOR: P06: PEBBLE SEAT PLASTIC COLOR: P06: PEBBLE PAINT: 501: PLATINUM METALLIC CASTER:	44	241.50	10,626.00

TITLE OF PRODUCT TRANSFERS UPON RECEIPT BY CUSTOMER.

ACCEPTED BY _____ TITLE _____ DATE _____

Description	Quantity	Unit Price	Extended Price
1 C4: SOFT DUAL WHEEL, BLACK NATIONAL Tag For CLASSROOM CH-1			
2 N45MMR - CINCH, ARMS, PKG 1, BLACK NATIONAL Tag For CLASSROOM CH-1	44	75.44	3,319.36
3 SMEMTNL2472 - Elemental; Table-Nest and fold, With casters, 24D x 72W Worksurface Finish: Smith System Laminate 494360 - CLASSIC LINEN LAMINATE Edge Type: D-1 1/4in Top w 4mm TMld Edge Finish: Smith System T-Mold CHP - CHAMPAGNE T MOLD Leg Finish: Smith System Paint PLT - Platinum Height: EJ - Adjustable Height SMITH SYST Tag For CLASSROOM 24/72-EJ	22	710.40	15,628.80
Sub Total			29,574.16
Total			29,574.16
IDEA LAB			
4 N45CCP - CINCH, COUNTER STOOL, PLASTIC BACK, PLASTIC SEAT BACK PLASTIC COLOR: P11: BLUEBERRY SEAT PLASTIC COLOR: P11: BLUEBERRY PAINT: 501: PLATINUM METALLIC GLIDE: C30: SOFT GLIDE NATIONAL Tag For IDEA LAB STOOL36	30	313.26	9,397.80
5 VE36 - Verb; Easel, 36W BASIC: 4799 PLATINUM METALLIC SHELF: 7360 MERLE	1	923.04	923.04

TITLE OF PRODUCT TRANSFERS UPON RECEIPT BY CUSTOMER.

ACCEPTED BY _____ TITLE _____ DATE _____

Description	Quantity	Unit Price	Extended Price
5 SHIP OPT: *OPT:SHIPPING OPTIONS ASSEMBL: STD:ASSEMBLED AND WRAPPED STEELCASE Tag For ME/36/54 IDEA LAB			
6 VWB2 - Verb; Whiteboard, 2 sides STEELCASE Tag For MB/2S IDEA LAB	12	112.04	1,344.48
7 SMSCA10006020 - Cascade Mega-Case-Open, 6-3" & 2-6" EW totes, casters Edge Panel Configuration: P- Pltnm Body w/Solid End Pnl End Panel Finish: Smith System Paint PB - PERSIAN BLUE SMITH SYST Tag For IDEA LAB 30/43-T	6	905.40	5,432.40
8 SMPLN25740 - Planner Activity Table-48"D x 90"W Worksurface Finish: SMITH SYSTEM LAMINATE 794960 - ASIAN NIGHT LAMINATE Edge Type: 1 1/4in Top w 3/8in Bmpr TMld Edge Finish: SMITH SYSTEM T-MOLD PBL - PERSIAN BLUE T MOLD Leg Finish: SMITH SYSTEM PAINT PLT - PLATINUM SMITH SYST Tag For IDEA LAB 48/90	6	727.80	4,366.80
9 SMINC17577 - Interchange; 3 inch dual wheel casters-Pack of 4, Locking, Colorful Caster Finish: Smith System Plastic PLATINUM - Platinum SMITH SYST Tag For IDEA LAB CSTR/4	6	72.60	435.60
Sub Total			21,900.12
Total			21,900.12
MEDIA CENTER			
10 N45BPR - CINCH,PLASTIC BACK,PLASTIC SEAT,MOBILE, PKG 1 BACK PLASTIC COLOR: P06: PEBBLE SEAT PLASTIC COLOR: P06: PEBBLE	38	241.50	9,177.00

TITLE OF PRODUCT TRANSFERS UPON RECEIPT BY CUSTOMER.

Description	Quantity	Unit Price	Extended Price
10 PAINT: 501: PLATINUM METALLIC CASTER: C4: SOFT DUAL WHEEL, BLACK NATIONAL Tag For MEDIA CENTER CH-1			
11 N45MMR - CINCH, ARMS, PKG 1, BLACK NATIONAL Tag For MEDIA CENTER CH-1	38	75.44	2,866.72
12 N45CBP - CINCH, BARSTOOL, PLASTIC BACK, PLASTIC SEAT BACK PLASTIC COLOR: P11: BLUEBERRY SEAT PLASTIC COLOR: P11: BLUEBERRY PAINT: 501: PLATINUM METALLIC GLIDE: C30: SOFT GLIDE NATIONAL Tag For MEDIA CENTER STOOL42	16	313.26	5,012.16
13 N93M3MX - FRINGE, MID BACK, 3 SEAT, ARMLESS, CONTRAST BACK UPHOLSTERY GRADE: ARCT: ARCCOM GRADE T KUBA_63000: KUBA CITRON LUMBAR UPHOLSTERY GRADE: DTE: DESIGNTEX GRADE E 3921_802: LINNEN SERAPH EXTREME BACK UPH GRADE: ARCT: ARCCOM GRADE T KUBA_63000: KUBA CITRON SEAT UPHOLSTERY GRADE: DTE: DESIGNTEX GRADE E 3921_802: LINNEN SERAPH FRONT SEAT GROMMET:	8	3,503.36	28,026.88

TITLE OF PRODUCT TRANSFERS UPON RECEIPT BY CUSTOMER.

ACCEPTED BY _____ TITLE _____ DATE _____

Description	Quantity	Unit Price	Extended Price
<p>13 X: NO FRONT SEAT GROMMET LEG MATERIAL/FINISH: 501: METAL LEG,PLATINUM METALLIC GLIDE: STD: STANDARD GLIDE NATIONAL Tag For MEDIA CENTER L-2</p>			
<p>14 N93MINR9SLX - FRINGE,MID BACK,INSIDE ROUND 90 DEGREE, LAM SURFACE,CONTRAST BACK UPHOLSTERY GRADE: ARCT: ARCCOM GRADE T KUBA_63000: KUBA CITRON LUMBAR UPHOLSTERY GRADE: DTE: DESIGNTEX GRADE E 3921_802: LINNEN SERAPH EXTREME BACK UPH GRADE: ARCT: ARCCOM GRADE T KUBA_63000: KUBA CITRON SEAT UPHOLSTERY GRADE: DTE: DESIGNTEX GRADE E 3921_802: LINNEN SERAPH SURFACE GROMMET: X: NO SURFACE GROMMET LAMINATE COLOR: G1007: SEROTINA LEG MATERIAL/FINISH: 501: METAL LEG,PLATINUM METALLIC GLIDE: STD: STANDARD GLIDE NATIONAL Tag For MEDIA CENTER L-3</p>	4	4,022.99	16,091.96
<p>15 SMPLN25590 - Planner Activity Table-42"D x 90"W Worksurface Finish: SMITH SYSTEM LAMINATE 494360 - CLASSIC LINEN LAMINATE Edge Type: 1 1/4in Top w 3/8in Bmpr TMld Edge Finish: SMITH SYSTEM T-MOLD CHP - CHAMPAGNE T</p>	8	668.40	5,347.20

TITLE OF PRODUCT TRANSFERS UPON RECEIPT BY CUSTOMER.

Description	Quantity	Unit Price	Extended Price
15 MOLD Leg Finish: SMITH SYSTEM PAINT PLT - PLATINUM SMITH SYST Tag For MEDIA CENTER 42/90			
16 SMINC17577 - Interchange; 3 inch dual wheel casters-Pack of 4, Locking, Colorful Caster Finish: Smith System Plastic PLATINUM - Platinum SMITH SYST Tag For MEDIA CENTER CSTR/4	8	72.60	580.80
17 TS31413 - Jenny; Chair-Round, Low UPHLSTRY: 59DH GRADED IN PR. GRP. 8 DESIGNTEX INC Purchaser: VENDOR Pattern: SAIL -3909 Color: COCOON -101 Direction: VERTICAL STEELCASE Tag For MEDIA CENTER JENNY	4	1,063.51	4,254.04
18 TS31413 - Jenny; Chair-Round, Low UPHLSTRY: 5999 MISC FABRIC MAHARAM FABRIC CORPORATION Purchaser: VENDOR Pattern: CYCLE -466275 Color: AUGER -002 Direction: HORIZONTAL STEELCASE Tag For MEDIA CENTER JENNY	4	876.91	3,507.64
19 89N3016TRDL - MARNIA,30DIAX16H, TABLE,ROUND,LAMINATE LAMINATE COLOR: G1007: SEROTINA PAINT COLOR: 501: PLATINUM METALLIC NATIONAL Tag For MEDIA CENTER 3016TRDL	2	1,009.82	2,019.64
20 TS4TWP - Campfire; Table-Personal TOP OPT: *OPT:TOP SELECTION HPL TOP: STD:HPL TOP	7	299.30	2,095.10

TITLE OF PRODUCT TRANSFERS UPON RECEIPT BY CUSTOMER.

yourNBS.com

Remit Payments to: NBS, 6973 Reliable Parkway, Chicago, IL 60686

Description	Quantity	Unit Price	Extended Price
20 TOP-SURF: TOP SURFACE OLL01: *TOP-SURF:OLL01 PRICE GROUP 1 2900: MISC LAMINATE STEELCASE CORPORATION Laminate: 2511 -WINTER ON MAPLE STEELCASE Tag For MEDIA CENTER 14/26			
21 PWBWTBRD - Whiteboard-Premium Size Option: Parametric Trim Type: Edge Series Height: 36.25000 Width: 72.00000 Surface Finish: Ceramic 7655 - E3 ENVIRONMENTAL CERAMICS Trim Finish: Anodized Aluminum 8043 - CLEAR ANODIZED ALUM Mount Option: Wall Mount Tray Option: No Tray STEELCASE Tag For WHITEBOARD MEDIA CENTER	2*	380.14	760.28
22 O27-C4284D-29 - Media Tech Orbit D-Shape Table, 27" Base, 42"D x 84"W x 29.25"H O27-C4284D-29 970-202951-000 HPL worksurface, 3mm PVC edge, Powder coated steel 27" diameter bases with mini-leveling glides. HPL: Wilsonart Pinball 4937-38 PVC: TBD Powder Coat: TBD Per Quote: 145519 MEDIA TECH Tag For D-TABLE GROUP ROOMS	2	926.20	1,852.40
23 TS4TBASE285 - Base, 28 dia base x 5 dia col BASE: 4799 PLATINUM METALLIC STEELCASE Tag For MEDIA CENTER TB	2	431.14	862.28
24 TS4THDR36 - Top-Table, Round, 36 dia, 1 1/8 thick, High pressure laminate EDGE: 6697 FOG	2	239.00	478.00

TITLE OF PRODUCT TRANSFERS UPON RECEIPT BY CUSTOMER.

ACCEPTED BY _____ TITLE _____ DATE _____

yourNBS.com

Remit Payments to: NBS, 6973 Reliable Parkway, Chicago, IL 60686

Description	Quantity	Unit Price	Extended Price
24 TOP-SURF: 2900 MISC LAMINATE WILSON ART Laminate: 4937-38 -PINBALL STEELCASE Tag For MEDIA CENTER 36			
25 CHAM-26425 - MiEN Chameleon Square Armless Chair Inner & Outer Back, outer shell and under seat Upholstery: Maharam Serried 466408 color Pier Pattern Repeat: 22" V, 27" H Seat Upholstery: Stinson CRE 274 Regal Blue ***NEED YARDAGE REQUIREMENTS FROM MIEN Pattern Repeat: No Repeat MIEN CO Tag For L-1a MEDIA CENTER	4	1,539.85	6,159.40
26 466408-004 - Maharam Serried 466408 color Pier COM for Mien MAHARAM	25	104.29	2,607.25
27 FLEX-31366 - FLEX Curved Bench, Single Tone - 18"h (Casters, Grade 03) FABRIC: Momentum – Beeline color Sundance ***NEED YARDAGE REQUIREMENTS FROM MIEN MIEN CO Tag For L-1b MEDIA CENTER	4	1,471.60	5,886.40
28 09125653 - Momentum – Beeline color Sundance COM FOR MIEN MOMENTUM	15	60.71	910.65
29 KIO-96377 - KIO Curved High Top Table, 42"h No Grommets, Group B, No Power, Mobile (Casters) KIO Laminate Finishes: Pinball 4937-38 MIEN CO Tag For OTTOMAN MEDIA CENTER	4	3,550.30	14,201.20
30 CHAM-29113 - MiEN Chameleon Round Stool with Laminate Top Upholstery: Momentum – Beeline color Sundance Bottom Upholstery: Designtex Linnen 3921-802 color Seraph MIEN CO Tag For OTTOMAN MEDIA CENTER	3	1,647.10	4,941.30
31 3921-802 - Designtex Linnen 3921-802 color Seraph DESIGNTEX	3	65.71	197.13

TITLE OF PRODUCT TRANSFERS UPON RECEIPT BY CUSTOMER.

ACCEPTED BY _____ TITLE _____ DATE _____

Description	Quantity	Unit Price	Extended Price
32 CHAM-26437 - MiEN Chameleon - Square Chair 29, Duo Color [CHAM-26437](No Wall Power, Steel Feet, Grade 03, Grade 04) Inner & Outer Back, outer shell and under seat Upholstery: Momentum Archer color Daybreak Pattern Repeat: 6-1/4" V, 17" H Seat Upholstery: Momentum – Beeline color Sundance Pattern Repeat: No Repeat MIEN CO Tag For CURVED TABLE MEDIA CENTER	2	1,658.15	3,316.30
33 09125653 - Momentum – Beeline color Sundance COM FOR MIEN MOMENTUM	6	60.71	364.26
34 KIO-81372 - KIO MOBILE 360 BOOKCASE 48X48X42h LAMINATE; TBD MIEN CO Tag For L-4 MEDIA CENTER	3	2,892.50	8,677.50
35 DFT-36-7224S-OS-L-MO - Media Technologies Drift Open Storage HPL Mobile Shelving 36"H x 72"W x 24"D, HPL construction/3mm PVC edges, HPL back, 4 adjustable shelves, 1 fixed adjustable shelf, locking casters, unit ships assembled, casters require installation. Please specify HPL and PVC. -HPL: Formica Greyed Oak 5791-PG -PVC Edge: Standard TBD Per Quote: 145519 MEDIA TECH Tag For MOBILE SHELF MEDIA CENTER	2	1,078.00	2,156.00
36 H11-7212-HPL BACK - Media Technologies H11-7212-HPL Back 960-006006-000 Benchmark, HPL Shelving Single Faced Starter 37"Wx12"Dx72"H HPL construction/3mm PVC edges, HPL back, 1 fixrd & 4 adjustable shelves. HPL: Formica Greyed Oak 5791-PG PVC: TBD Per Quote: 145519 MEDIA TECH Tag For 36W72H-S MEDIA CENTER	2	783.20	1,566.40
37 H11-7212A-HPL BACK - Media Technologies H11-7212A-HPL Back 960-006007-000 Benchmark, HPL Shelving Single Faced Adder 36"Wx12"Dx60"H HPL construction/3mm PVC edges, HPL back, 1	14	659.12	9,227.68

TITLE OF PRODUCT TRANSFERS UPON RECEIPT BY CUSTOMER.

Description	Quantity	Unit Price	Extended Price
<p>37 fixed & 4 adjustable shelves.</p> <p>HPL: Formica Greyed Oak 5791-PG PVC: TBD</p> <p>Per Quote: 145519 MEDIA TECH</p> <p>Tag For 36W72H-A MEDIA CENTER</p>			
<p>38 31-LK - Media Technologies 31-LK 990-000614-000 Leveling Kit for use on 11 Series shelving 800-000091-000 + 800-000007-000 1 set needed for an adder 2 sets needed for a starter MEDIA TECH</p>	18	5.72	102.96
<p>39 H11-4824-MOB-HPLBACK - Media Technologies H11-4824-HPL BACK 960-180537-000 Benchmark, HPL Shelving Double Faced Starter 37"Wx24"Dx48"H HPL construction/3mm PVC edges, HPL back, 2 fixed & 4 adjustable shelves, 4 casters HPL: Formica Greyed Oak 5791-PG PVC: TBD Per Quote: 145519 MEDIA TECH</p> <p>Tag For DBLE SIDED MEDIA CENTER</p>	33	935.44	30,869.52
<p>40 DISP-4724 - Media Technologies DISP-4724 960-283747-000 Display End Panel, 3 opening, 24"Wx3-1/2"Dx47-1/2"H **to mount on H11-4824 Double Sided Bookcases. HPL/3mm PVC construction HPL: Formica Greyed Oak 5791-PG HPL Interior Back Panel PVC: TBD</p> <p>Per Quote: 145519 MEDIA TECH</p> <p>Tag For DISPLAY MEDIA CENTER</p>	11	629.20	6,921.20
<p>41 ND-75DX-MOB - Media Technologies ND-75DX-MOB 970-007136-000 Nomad Desk, 24"Dx75"Wx29"H Mobile 29"H worksurface with grommet, with Transaction top,3mm PVC Edge, (5) locking casters. A: HPL Front: Formica Greyed Oak 5791-PG C: HPL End Panel: Formica Greyed Oak 5791-PG D: HPL Work Surface: Pionite White Fiesta MW550-S D: PVC Work Surface: TBD E: Powder Coat: TBD</p>	1	3,300.00	3,300.00

TITLE OF PRODUCT TRANSFERS UPON RECEIPT BY CUSTOMER.

ACCEPTED BY _____ TITLE _____ DATE _____

Description	Quantity	Unit Price	Extended Price
41 MEDIA TECH Tag For NOMAD MEDIA CENTER			
42 ND-40BR-MOB - Media Technologies ND-40BR-MOB 970-179190-000 Nomad Book Return, 30"Dx40"Wx29"H, Mobile HPL/3mm PVC top w/ radiused corners, book return slot in top, Curved face, steel end frames w/ floating HPL panel, 4 locking casters. For use w/ MCD-DBTL1824-24 Depressible Book Truck A: HPL Front: Formica Greyed Oak 5791-PG C: HPL End Panel: Formica Greyed Oak 5791-PG D: HPL Work Surface: Pionite – White Fiesta MW550-S D: PVC Work Surface: TBD E: Powder Coat: TBD MEDIA TECH Tag For BOOK RETURN MEDIA CENTER	1	1,568.16	1,568.16
43 MCD-DBTL-1824-24 - Media Technologies MCD-DBTL-1824-24 960-203769-000 Depressible Platform Book Truck, 18"Dx24.25"Wx24"H HPL construction with 3mm PVC edge banding, spring-loaded platform lift mechanism. HPL: Formica Greyed Oak 5791-PG PVC: TBD MEDIA TECH Tag For BOOK TRUCK MEDIA CENTER	1	1,183.60	1,183.60
44 CUSTOM - Primeway Mobile Book Return Cart / 31" x 24" x 24" high Cart is on 4 industrial casters, is a box with an open top, closed on sides and bottom, fixed rod style pull on the face and depressible shelf on the inside, that lowers as books build up on the shelf. Shelf has white foam pad on top to ease impact of books. Front 2 casters, on pull side have a brake if needed. PRIMEWAY Tag For BOOK RETURN CART OUTSIDE MEDIA CENTER	1	1,533.33	1,533.33
45 CUSTOM - Primeway Book Return Cart Storage Cabinet / 33" x 25" x 36" high Top is inset, on both side and back panels of cabinet. (Gallery Style) False panel on face of cabinet with a slot for inserting books. Closed storage area below the top that houses the mobile book return cart with double doors that will open to allow the cart to roll out. THIS IS TO HOUSE BOOK RETURN CART ABOVE PRIMEWAY Tag For BOOK RETURN CABINET OUTSIDE MEDIA CENTER	1	1,333.33	1,333.33
46 FTS-2424-G1-4C - Media Technologies 24" x 24" x 18"H, Square Ottoman Upholstered seat, Grade 1 fabric w/ 2"T high density foam on 1"T	4	554.40	2,217.60

TITLE OF PRODUCT TRANSFERS UPON RECEIPT BY CUSTOMER.

yourNBS.com

Remit Payments to: NBS, 6973 Reliable Parkway, Chicago, IL 60686

Description	Quantity	Unit Price	Extended Price
46 assembled frame, w/ (4) non-locking casters Upholstery: Momentum – Beeline color Sundance 1.5 yards each Per Quote: 145519 MEDIA TECH Tag For SQRE MEDIA CENTER			
47 09152878 - Momentum Beeline color, Sundance COM for FTS-2424-G1-4C ottomans MOMENTUM	6	60.71	364.26
48 KRB-C3660L-42-4C - Media Technologies Kirby Tables KRB-C3660L-42-4C 970-202313-000 36"D x 60"W x 42"H HPL Worksurface, HPL Panels, 3mm PVC Edges, Panel-mount locking casters. Powder Coat: 809 Silver Laminate: Wilsonart – Pinball 4937-38 PVC Edge: Standard TBD Per Quote: 145519 MEDIA TECH Tag For 36/60/42 MEDIA CENTER	2	753.28	1,506.56
49 KRB-C3660L-29-4C - Media Technologies Kirby table 36"D x 60"W x 29"H, Mobile - 809 Silver KRB-C3660L-29-4C 970-202310-000-G0809 HPL Worksurface, HPL Panels, 3mm PVC Edges, Panel-mount locking casters. Laminate: Wilsonart – Pinball 4937-38 PVC Edge: Standard TBD Per Quote: 145519 MEDIA TECH Tag For 36X60X29 MEDIA CENTER	1	672.76	672.76
50 990-001210-000 - Media Technologies Upcharge for Premium Laminate Formica Greyed Oak 5791-PG Per Quote: 145519 MEDIA TECH	1	1,160.28	1,160.28
51 990-000001-000 - WALL MOUNTED COUNTER WITH CABINET XFC-A2490-13, Custom Floating Counter, 90"L x 24"D x 13"H. Unit to be HPL construction. To have 30"W x 4"H section on left with grommet. Center section to be 30"W x 13"H w/ 2 locking doors and grommet in top and rear. Right hand section to be on same plane	1	3,511.20	3,511.20

TITLE OF PRODUCT TRANSFERS UPON RECEIPT BY CUSTOMER.

ACCEPTED BY _____ TITLE _____ DATE _____

yourNBS.com

Remit Payments to: NBS, 6973 Reliable Parkway, Chicago, IL 60686

Description	Quantity	Unit Price	Extended Price
51 as cupboard storage 30"W x 4"H. Unit to be wall mounted w/ no supports. Refer to dealer provided drawing. HPL Body (shown as blue excluding doors): Nevamar – Spicy Flavors S8002T HPL Face (shown as white & doors also): Wilsonart- Crystal D388-60 Pull: TBD PER QUOTE: 145519 MEDIA TECH Tag For WALK-UP COUNTER MEDIA CENTER			
52 990-001210-000 - Media Technologies Upcharge for Premium Laminate Wilsonart – Quince Y0346-60 Per Quote: 145514 MEDIA TECH	1	245.78	245.78
53 SMLBR21004 - Booktruck, Six Sloping Shelf with Six Book Supports, 18"D x 36"W x 43"H Cart Finish: Smith System Paint NV - NAVY Divider Finish: Smith System Plastic SMOKE - SMOKE SMITH SYST Tag For MEDIA CENTER ST/6SS-D	4	426.00	1,704.00
Sub Total			201,338.11
MICHIGAN 6% TAX			45.62
Total			201,383.73
54 UPCHARGE - HIGH GLOSS LAMINATE UPCHARGE FOR TABLES SMITH SYST	1	400.00	400.00
SMALL GROUP			
55 N45BPR - CINCH,PLASTIC BACK,PLASTIC SEAT,MOBILE, PKG 1 BACK PLASTIC COLOR: P06: PEBBLE SEAT PLASTIC COLOR: P06: PEBBLE PAINT: 501: PLATINUM METALLIC CASTER: C4: SOFT DUAL WHEEL,BLACK NATIONAL	14	241.50	3,381.00

TITLE OF PRODUCT TRANSFERS UPON RECEIPT BY CUSTOMER.

ACCEPTED BY _____ TITLE _____ DATE _____

Description	Quantity	Unit Price	Extended Price
55 Tag For SMALL GROUP CH-1			
56 N45MMR - CINCH,ARMS,PKG 1,BLACK NATIONAL Tag For SMALL GROUP CH-1	14	75.44	1,056.16
57 O27-C4884D-29 - Orbit D-Shape Table, 27" Base, 48"D x 84"W x 29.25"H O27-C4884D-29 970-202945-000 HPL worksurface, 3mm PVC edge, Powder coated steel 27" diameter bases with mini-leveling glides. HPL: Wilsonart Pinball 4937-38 PVC: TBD Powder Coat: TBD MEDIA TECH Tag For D-TABLE GROUP ROOMS	2	926.20	1,852.40
58 480120 - Node; Chair, Tripod base, Personal worksurface BASE: 6249 PLATINUM SOLID PAINT: 4799 PLATINUM METALLIC SHELL: 6334 FLASH SURFACE: 6249 PLATINUM SOLID CUSHOPT: *OPT:CUSHION OPTIONS NO CUSH: NO CUSHION FOR NODE CASTERS: *OPT:CASTERS OPTIONS HARD CST: HARD CASTERS CUPHLDER: *OPT:CUP HOLDER OPTION NO CUP: NO CUP HOLDER TBLTSTND: *OPT:TABLET STAND OPTION NO STAND: STD:NO TABLET STAND STEELCASE Tag For SMALL GROUP NODE	6	412.33	2,473.98
Sub Total			8,763.54
Total			8,763.54
59 LOT - PROJECT MANAGEMENT FEES 16 HOURS X \$70 NBS TROY	1	1,120.00	1,120.00
60 LOT - NON UNION STRAIGHT TIME LABOR TO RECEIVE AND DELIVER NEW PRODUCT TO THE JOB SITE	1	2,490.00	2,490.00

TITLE OF PRODUCT TRANSFERS UPON RECEIPT BY CUSTOMER.

ACCEPTED BY _____ TITLE _____ DATE _____



2595 Bellingham • Troy, MI 48083 • 248.823.5400 • 248.823.5401 Fax
 2211 Old Earhart Rd. Ste.190 • Ann Arbor, MI 48105 • 248.823.5400 • 248.823.5401 Fax
 3201 Pine Tree Rd. Ste. A • Lansing, MI 48911 • 517.886.0072 • 248.823.5401 Fax
 5160 Alliance Dr. • Bay City, MI 48706 • 989.895.8574 • 989.895.8545 Fax
 4 North St. Clair St. • Toledo, OH 43604 • 419.662.2040 • 248.823.5401 Fax

Quotation 347696
 Page 15 / 15 (cont'd)

yourNBS.com

Remit Payments to: NBS, 6973 Reliable Parkway, Chicago, IL 60686

Description	Quantity	Unit Price	Extended Price
60 ALL WORK TO BE DONE AT ONE TIME ROSE MOVIN			
61 LOT - NON UNION STRAIGHT TIME LABOR TO INSTALL NEW PRODUCT PER PRINT ALL WORK TO BE DONE AT ONE TIME PRICING DOES NOT INCLUDE THE REMOVAL OF EXISTING PRODUCT ROSE MOVIN	1	15,126.00	15,126.00
62 MONTHLY - MONTHLY STORAGE FEES TO HOLD FURNITURE AT WAREHOUSE. PRODUCT TO ARRIVE JULY 2022 TO AVOID PRICE INCREASES - WILL NEED STORAGE FOR THE MONTHS OF AUGUST, SEPTEMBER & OCTOBER WILL BE INVOICED MONTHLY FOR THE MONTHS USED ROSE MOVIN	3	2,169.00	6,507.00

Quotation Totals	
Sub Total	287,218.93
MIEN CO FREIGHT	3,836.00
SMITH SYST FREIGHT	5,234.00
MEDIA TECH FREIGHT	1,375.00
STEELCASE COM FABRIC LINE 18	1,050.00
STEELCASE OLL LINE 24	372.00
DESIGNTEX FREIGHT	50.00
MAHARAM FREIGHT	125.00
MOMENTUM FREIGHT	60.00
MICHIGAN 6% TAX	45.62
Grand Total	299,366.55

End of Quotation

TITLE OF PRODUCT TRANSFERS UPON RECEIPT BY CUSTOMER.

ACCEPTED BY _____ TITLE _____ DATE _____



CURVED LOUNGE SEATING (IMAGES VARY SLIGHTLY FROM ACTUAL LAYOUT/ PRODUCT)

FLOWER OTTOMANS

CURVED BOOKCASES AND BENCHES



PLANNER TABLE & BENCHES



WALK-UP COUNTER



TRAPEZOID TABLES



FLIP/ NEST TABLE



DOUBLE SIDED 48" BOOKCASE



48" END PANEL



OODLE (STACKED 3-HIGH)



NOMAD DESK USER SIDE



NOMAD DESK FRONT SIDE



SINGLE SIDED 42" BOOKCASE



BOOK TRUCK CART



BOOK RETURN



DESCENDING BOOK TRUCK (FITS INSIDE BOOK RETURN)



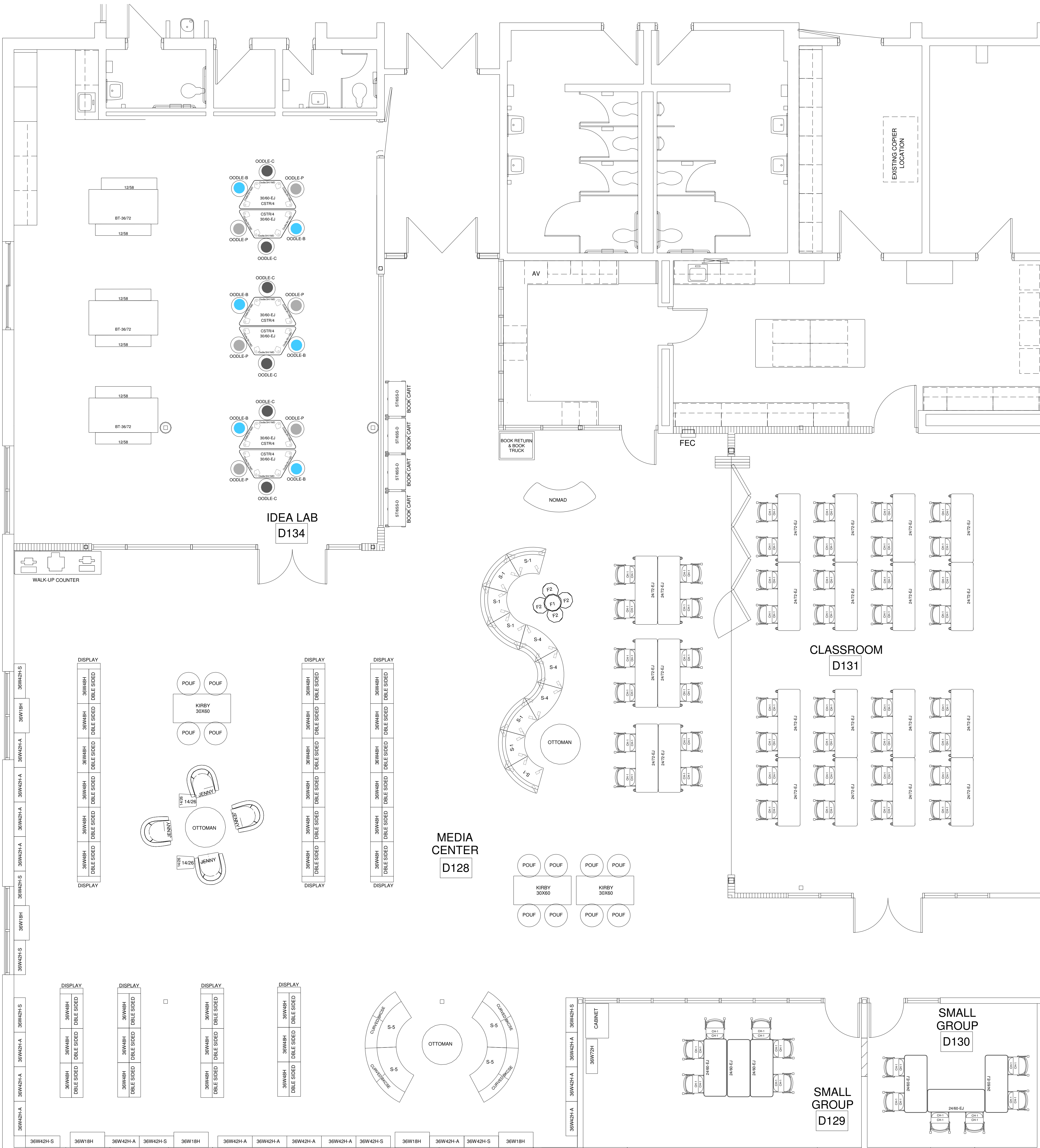
BOOKCASE BENCH



KIRBY TABLE



JENNY CLUB CHAIRS & SIDE TABLES



Scale 1/4" = 1'
FURNITURE PLAN

NEEDS SEAL:

GENERAL NOTES:
NOT FOR CONSTRUCTION
ALL STRUCTURAL, MECHANICAL & ELECTRICAL ENGINEERING IS THE RESPONSIBILITY OF OTHERS.
ALL FURNITURE & DESIGN DRAWINGS ARE IN CONFORMANCE & OBSERVATION MAY NOT BE MADE WITHOUT THE WRITTEN CONSENT OF NBS. ALL CONSTRUCTION OF CONTRACT AND CHANGES ARE HEREBY SPECIFICALLY PROHIBITED.
FINAL FURNITURE IS SUBJECT TO ANY MODIFICATIONS FROM THE FINAL ORDER TO CONSTRUCTIVE CHANGES. ALL CONSTRUCTION, MATERIAL DIFFERENCES OR CHANGES REQUIRED FOR ANY REASON ARE NOTIFICATION REQUIRED.
IF NBS DOES NOT DESIGN THIS PROJECT, NBS DOES NOT ASSUME RESPONSIBILITY FOR THE DESIGN, SPECIFICATIONS OR ANY OF THE PRODUCTS SHOWN IN THIS DRAWING. NBS WILL ONLY RESPOND TO THE PROJECT REQUEST FOR THE PROJECT.

APPROVED BY: DATE:

APPROVED APPROVED AS NOTED

Issued For
03/08/22 Audit
00/00/00

OWNER:
Livonia Public Schools

PROJECT:
COOPER ELEMENTARY
MEDIA CENTER RENOVATION

28550 Ann Arbor Trail
Westland, MI 48185

PROJECT FOLDER: 212187
HEBERG ORDER #: (Order entry, Customer PO)
ACCOUNT MANAGER: MONIQUE DUJAN
DESIGNER: BREANNA HUTTON
PROJECT MANAGER: MIKE GREEN

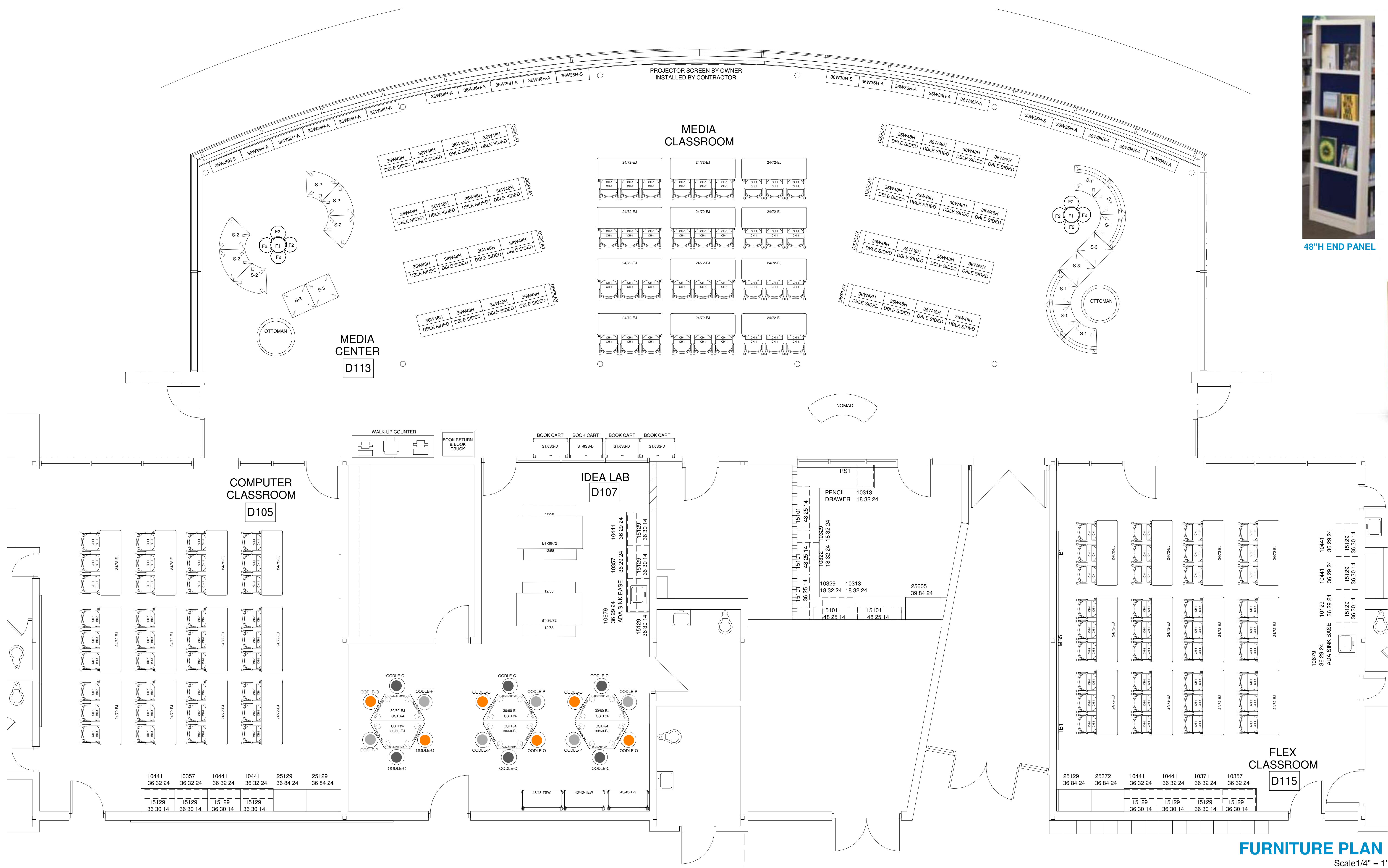
DRAWING:

OVERALL FLOOR PLAN

DRAWING NUMBER:

ID-3.0

NEED SEAL:



48\"/>



DOUBLE SIDED 48\"/>



BOOK TRUCK CART



SINGLE SIDED 36\"/>



TRAPEZOID TABLES



PLANNER TABLE & BENCHES



OODLE (STACKED 3-HIGH)



FLIP/ NEST TABLE



CURVED LOUNGE SEATING (IMAGES VARY SLIGHTLY FROM ACTUAL LAYOUT/ PRODUCT)



FLOWER OTTOMANS



WALK-UP COUNTER



NOMAD DESK USER SIDE



NOMAD DESK FRONT SIDE



BOOK RETURN



DESCENDING BOOK TRUCK (FITS INSIDE BOOK RETURN)

GENERAL NOTES:
NOT FOR CONSTRUCTION
ALL STRUCTURAL, MECHANICAL & ELECTRICAL ENGINEERING IS THE RESPONSIBILITY OF OTHERS.
ALL FURNITURE & DESIGN DRAWINGS ARE IN CONFORMANCE & OBSERVATION MAY NOT BE MADE WITHOUT FIRST VERIFYING CORRECT OF USE. ALL CORRELATION DRAWINGS OF CONTRACT AND CHANGES ARE HEREBY SPECIFICALLY FORWARDED.
FINAL FURNITURE OFF PLACEMENT IS SUBJECT TO ANY MODIFICATIONS FROM THE FINAL ORDER TO CONTRACT FOR CHANGES & ALL CONSTRUCTION, MATERIAL DIFFERENCES OR CHANGES REQUIRED FOR ANY REASON ARE NOTIFICATION REQUIRED.
IF NBS DID NOT DESIGN THIS PROJECT, NBS DOES NOT ASSUME RESPONSIBILITY FOR THE DESIGN, SPECIFICATIONS OR ANY OF THE PRODUCTS INCLUDED IN THIS SET. NBS HAS ONLY RESPONDED TO THE PREVIOUS REQUEST FOR THE

APPROVED BY: DATE:

APPROVED APPROVED AS NOTED

Issued For:

03/08/22 Audit

OWNER:
Livonia Public Schools

PROJECT:
COOLIDGE ELEMENTARY
MEDIA CENTER RENOVATION

30500 Curtis Rd.
Livonia, MI 48152

PROJECT FOLDER: 212189

HEDBERG ORDER #: (Order entry, Customer PO)

ACCOUNT MANAGER: MONIQUE DUGAN

DESIGNER: BREANNA HUTTON

PROJECT MANAGER: MIKE GREEN

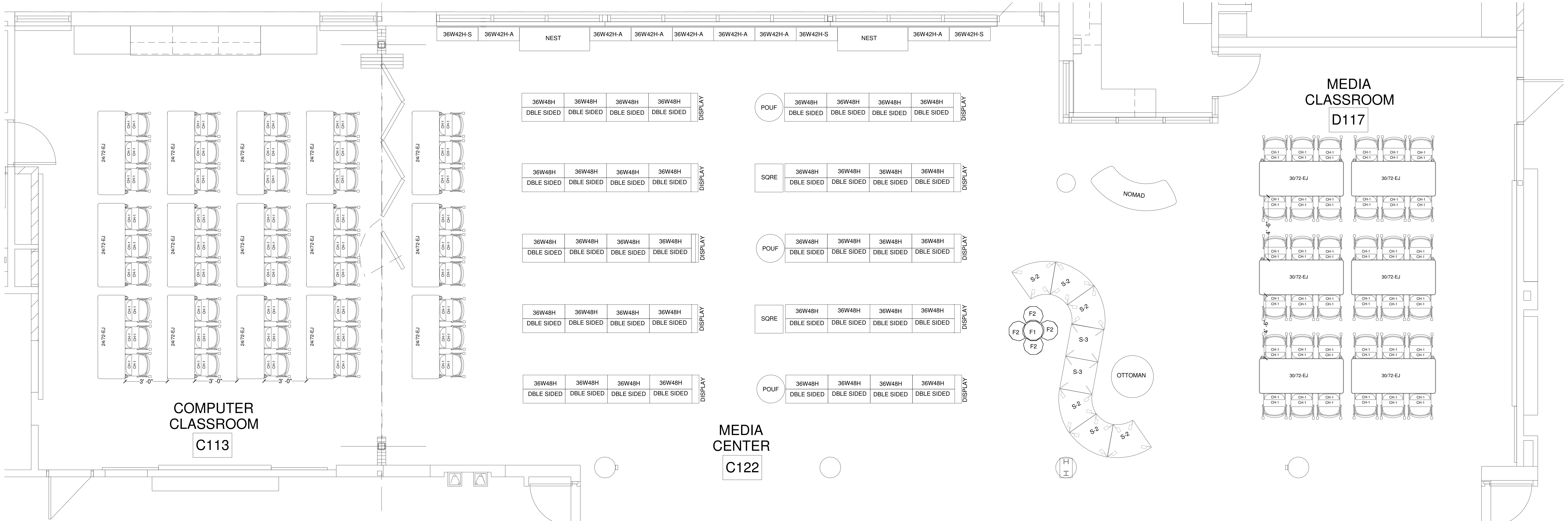
DRAWING:

OVERALL FLOOR PLAN

DRAWING NUMBER:

ID-3.0

NDDO SEAL:



FLIP/ NEST TABLE



PLANNER TABLE & BENCHES



OODLE (STACKED 3-HIGH)



NOMAD DESK USER SIDE

NOMAD DESK FRONT SIDE



BOOK RETURN

DESCENDING BOOK TRUCK (FITS INSIDE BOOK RETURN)



SINGLE SIDED 42" BOOKCASE

DOUBLE SIDED 48" BOOKCASE

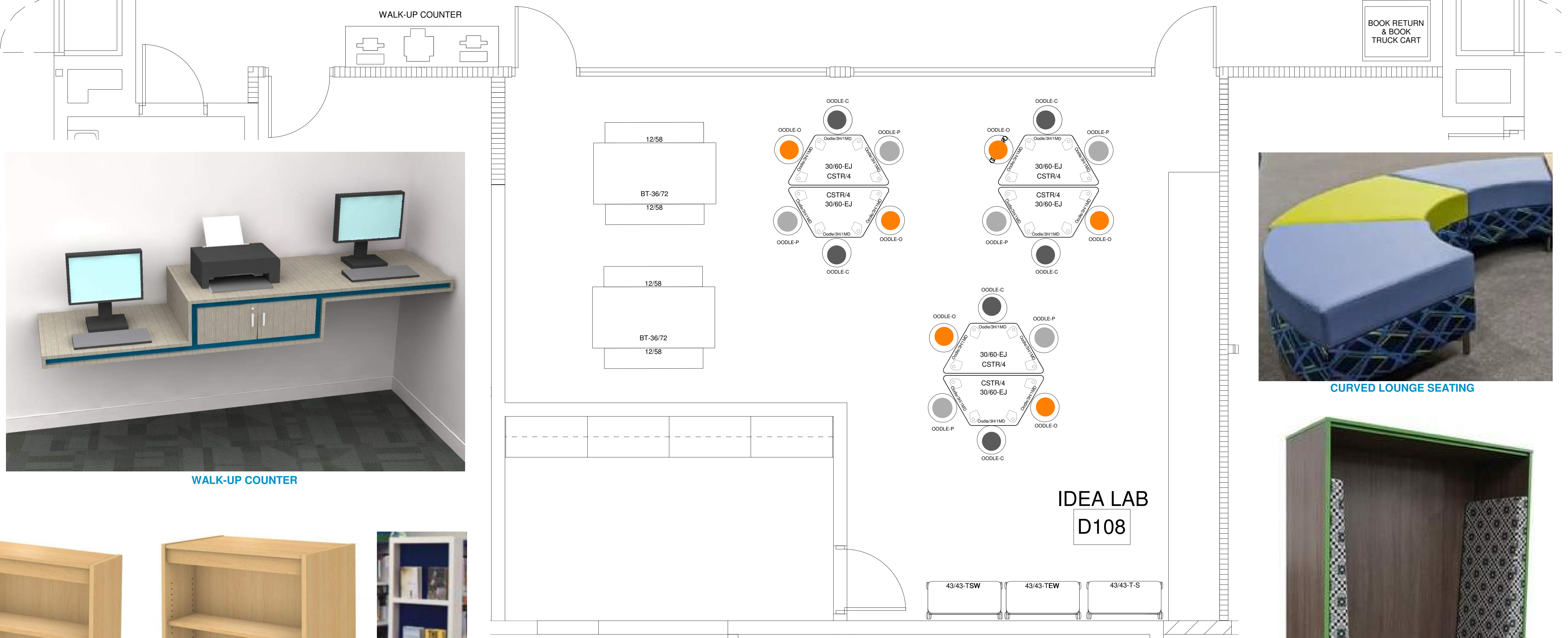
48" END PANEL



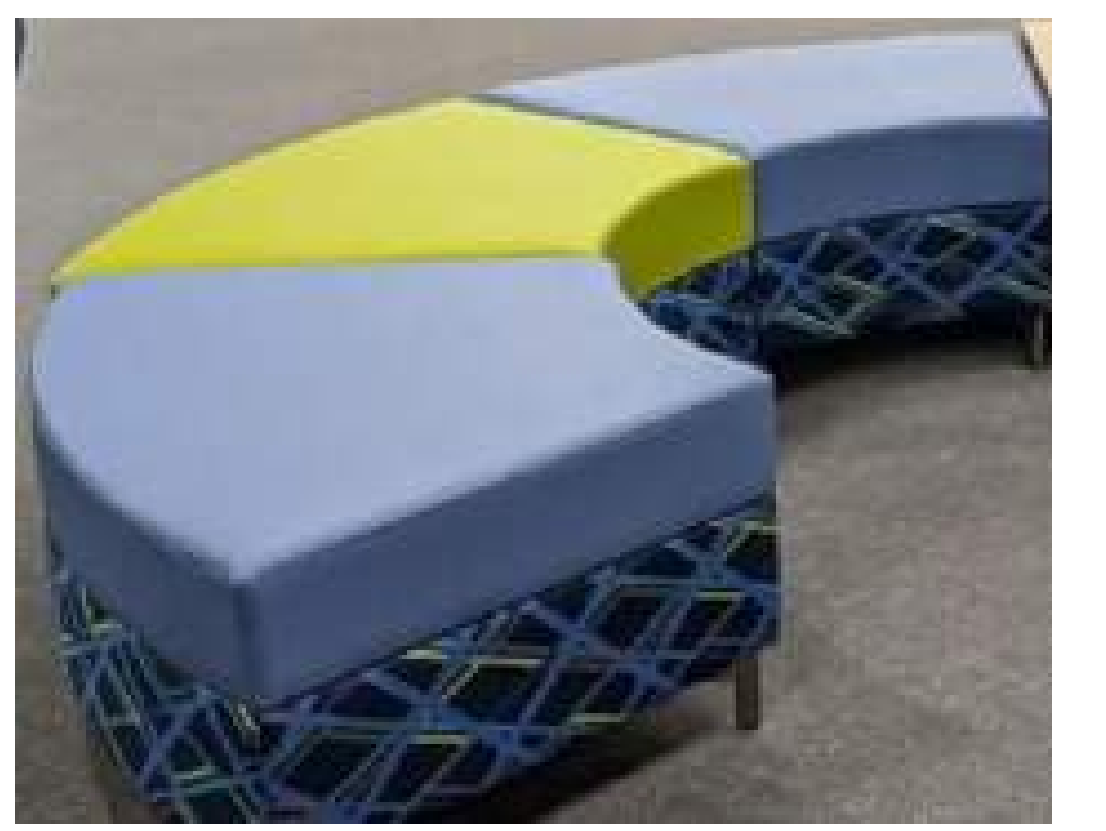
SHROOM OTTOMAN



FLOWER OTTOMANS



WALK-UP COUNTER



CURVED LOUNGE SEATING



READING NOOK

GENERAL NOTES:
NOT FOR CONSTRUCTION
ALL STRUCTURAL, MECHANICAL & ELECTRICAL ENGINEERING IS THE RESPONSIBILITY OF OTHERS.
ALL FURNITURE & DESIGN DRAWINGS ARE IN CONFORMANCE & OBSERVATION MAY NOT BE MADE WITHOUT THE WRITTEN CONSENT OF NBS. ALL COORDINATION OF WORK IS THE RESPONSIBILITY OF THE ARCHITECT.
NBS ASSUMES NO LIABILITY FOR ANY ERRORS OR OMISSIONS IN THIS DRAWING. THE USER SHALL BE RESPONSIBLE FOR VERIFYING ALL DIMENSIONS AND MATERIALS.
IF NBS DOES NOT DESIGN THIS PROJECT, NBS DOES NOT ASSUME RESPONSIBILITY FOR THE DESIGN, SPECIFICATIONS OR ANY OTHER INFORMATION PROVIDED IN THIS DRAWING. NBS HAS ONLY RESPONDED TO THE PREVIOUS REQUESTS FOR THE PROJECT.

APPROVED BY: _____ DATE: _____

APPROVED APPROVED AS NOTED

Issued For:
03/08/22 Audit
00/00/00

OWNER:
Livonia Public Schools

PROJECT:
KENNEDY ELEMENTARY
MEDIA CENTER RENOVATION

14201 Hubbard St.
Livonia, MI 48154

PROJECT FOLDER: 212190
HEDBERG ORDER #: TBD
ACCOUNT MANAGER: MONIQUE DUGAN
DESIGNER: BREANNA HUTTON
PROJECT MANAGER: MIKE GREEN

DRAWING:

OVERALL FLOOR PLAN

DRAWING NUMBER:

ID-1.1

NEEDS SEAL:



WALK-UP COUNTER



FLIP/ NEST TABLE



PLANNER TABLE & BENCHES



DOUBLE SIDED 48" H BOOKCASE



48" H END PANEL



TRAPEZOID TABLES



SINGLE SIDED 60" H BOOKCASE



SINGLE SIDED 42" H BOOKCASE



SQUARE TABLE



NOMAD DESK USER SIDE



NOMAD DESK FRONT SIDE



BOOK RETURN



DESCENDING BOOK TRUCK
(FITS INSIDE BOOK RETURN)



OODLE (STACKED 3-HIGH)



BOOK TRUCK CART



JENNY CLUB CHAIRS & TABLES



CURVED LOUNGE SEATING (IMAGES VARY SLIGHTLY FROM ACTUAL LAYOUT/ PRODUCT)



FLOWER OTTOMANS



GENERAL NOTES:
NOT FOR CONSTRUCTION
ALL STRUCTURAL, MECHANICAL & ELECTRICAL ENGINEERING IS THE RESPONSIBILITY OF OTHERS.
ALL FURNITURE & DESIGN DRAWINGS ARE FOR CONFORMANCE & OBSERVATION ONLY. NO GUARANTEE OF PERFORMANCE OR DURABILITY IS MADE. ALL DIMENSIONS ARE APPROXIMATE. ALL DIMENSIONS ARE APPROXIMATE. ALL DIMENSIONS ARE APPROXIMATE.
NBS ASSUMES NO LIABILITY FOR ANY DAMAGE TO ANY PROPERTY OR PERSONS FROM THE USE OF THIS DRAWING. THE USER SHALL BE RESPONSIBLE FOR OBTAINING ALL NECESSARY PERMITS AND APPROVALS FROM ALL APPLICABLE AGENCIES.
IF NBS DOES NOT DESIGN THIS PROJECT, NBS DOES NOT ASSUME RESPONSIBILITY FOR THE DESIGN, SPECIFICATIONS OR ANY OTHER INFORMATION PROVIDED IN THIS DRAWING. NBS HAS ONLY RESPONDED TO THE PREVIOUS REQUEST FOR THE PROJECT.

APPROVED BY: DATE:

APPROVED APPROVED AS NOTED

02/09/22 Issued For Audit

OWNER:
Livonia Public Schools

PROJECT:
RANDOLPH ELEMENTARY
MEDIA CENTER RENOVATION

14470 Norman St.
Livonia, MI 48154

PROJECT FOLDER: 212188
HEDBERG ORDER #: (Order entry, Customer PO)
ACCOUNT MANAGER: MONIQUE DUGAN
DESIGNER: BREANNA HUTTON
PROJECT MANAGER: MIKE GREEN

DRAWING:

OVERALL
FLOOR PLAN

DRAWING NUMBER:

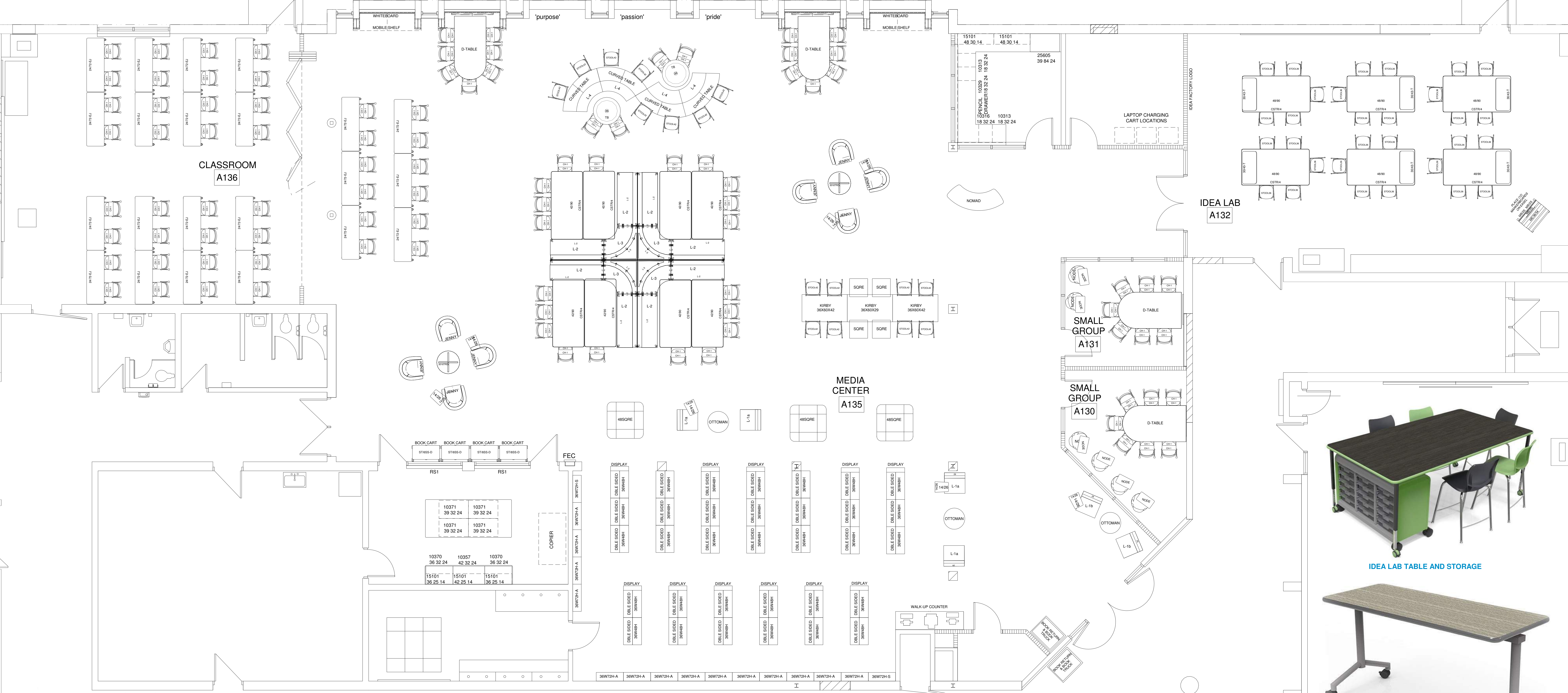
ID-3.0

Audit - Quote #346428



Scale 1/4" = 1'
FURNITURE PLAN

NBDD SEAL:



IDEA LAB TABLE AND STORAGE



FLIP/NEST TABLE



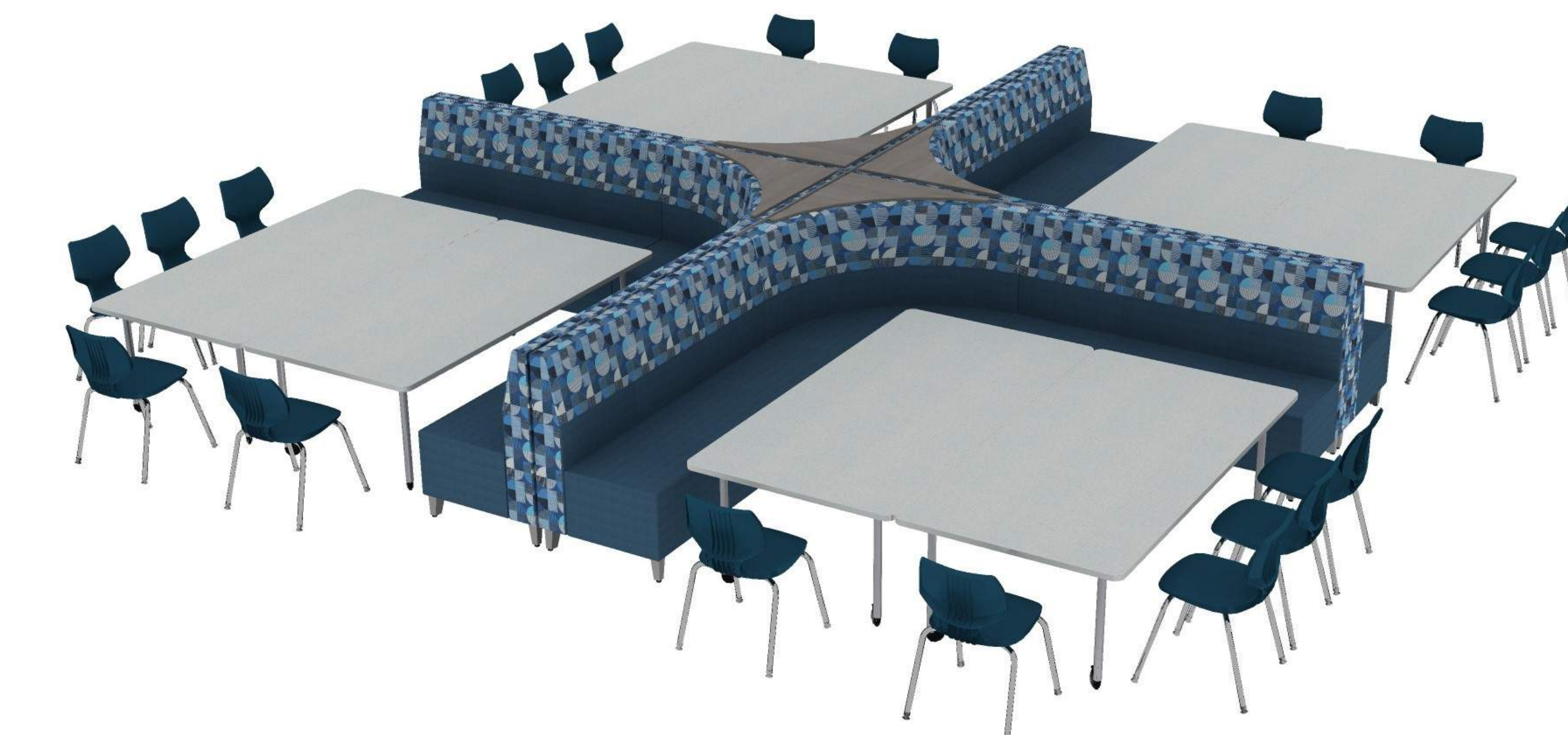
DOUBLE SIDED 48" H BOOKCASE



SINGLE SIDED 72" H BOOKCASE



JENNY CLUB CHAIRS & TABLES



CENTER LOUNGE SEATING (IMAGES VARY SLIGHTLY FROM ACTUAL LAYOUT/ PRODUCT)



SQUARE MOBILE BOOKCASE



BOOK TRUCK CART



NODE CHAIR



WALK-UP COUNTER



NOMAD DESK USER SIDE



NOMAD DESK FRONT SIDE



BOOK RETURN



DESCENDING BOOK TRUCK (FITS INSIDE BOOK RETURN)

GENERAL NOTES:
NOT FOR CONSTRUCTION
ALL STRUCTURAL, MECHANICAL & ELECTRICAL ENGINEERING IS THE RESPONSIBILITY OF OTHERS.
ALL FURNITURE & DESIGN DRAWINGS ARE IN CONFORMANCE & OBSERVATION MAY NOT BE SUBJECT TO THE SAME REVIEW PROCESS AS THE ARCHITECT'S DESIGN DEVELOPMENT CONTRACT AND COMPANIES ARE HEREBY SPECIFICALLY ADVISED.
FINAL FURNITURE OFF PLACEMENT IS SUBJECT TO ANY MODIFICATIONS FROM THE PLAN DUE TO CONSTRUCTION CHANGES & ALL CONSTRUCTION VARIATIONS, DIFFERENCES OR CHANGES REQUIRED FOR ANY REASON ARE NOTIFICATION TO THE OWNER.
IF NBS DOES NOT DESIGN THIS PROJECT, NBS DOES NOT ASSUME RESPONSIBILITY FOR THE DESIGN, SPECIFICATIONS OR ANY OF THE PRODUCTS INCLUDED IN THIS SET. NBS HAS ONLY RESPONDED TO THE PREVIOUS PROJECTS FOR THE

APPROVED BY: DATE:

APPROVED APPROVED AS NOTED

Issued For:
03/08/22 Audit

00/00/00

OWNER:
Livonia Public Schools

PROJECT:
EMERSON MIDDLE SCHOOL
MEDIA CENTER RENOVATION

29100 W Chicago
Livonia, MI 48150

PROJECT FOLDER: 212196

HEBERG ORDER #: (Order entry, Customer PO)

ACCOUNT MANAGER: MONIQUE DUJAN

DESIGNER: BREANNA HUTTON

PROJECT MANAGER MIKE GREEN

DRAWING:

OVERALL FLOOR PLAN

DRAWING NUMBER:

ID-1.1