

Special Education Center Programs Kent ISD

Kent ISD School Board 2022-2023 Impact Report



Goals


Goal 1: Position Kent ISD as a leader for student-centered programming and regional educational services.

Kent ISD is the fourth largest ISD in the second most populous region in Michigan. This positions the organization to not only be a regional leader, but also a model for quality statewide. Kent ISD's goal is to be the premier destination for high-quality student and school district programming - one that meets the needs of all students and districts.

Special Education Center Programs Kent ISD

Kent ISD Center Programs will empower and equip students with the strategies and skills they need to maximize their participation and independence and to ensure equitable access in school, community, career and life.





“To love someone is to show to them their beauty, their worth, and their importance.”

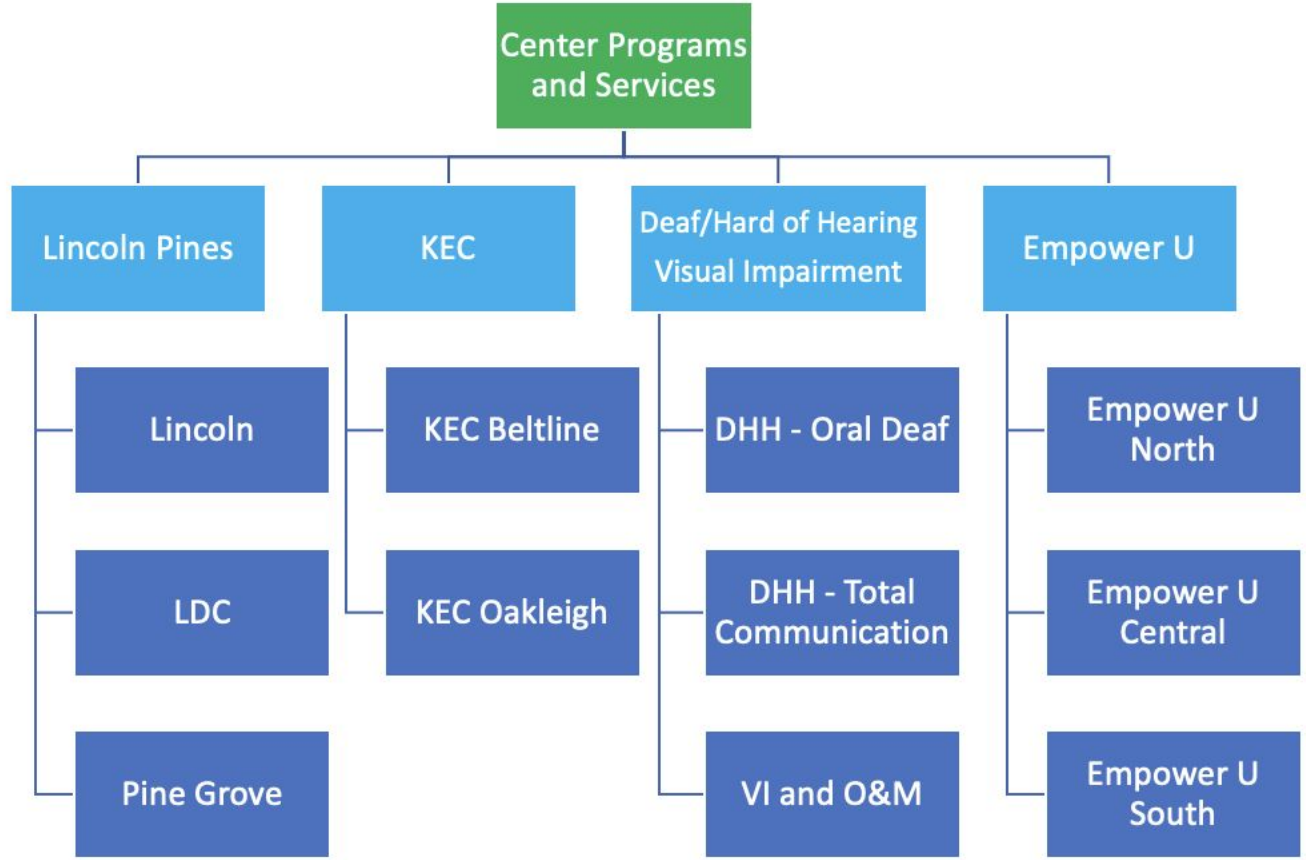
- Jean Vanier

Continuous Improvement - System

District Improvement Team

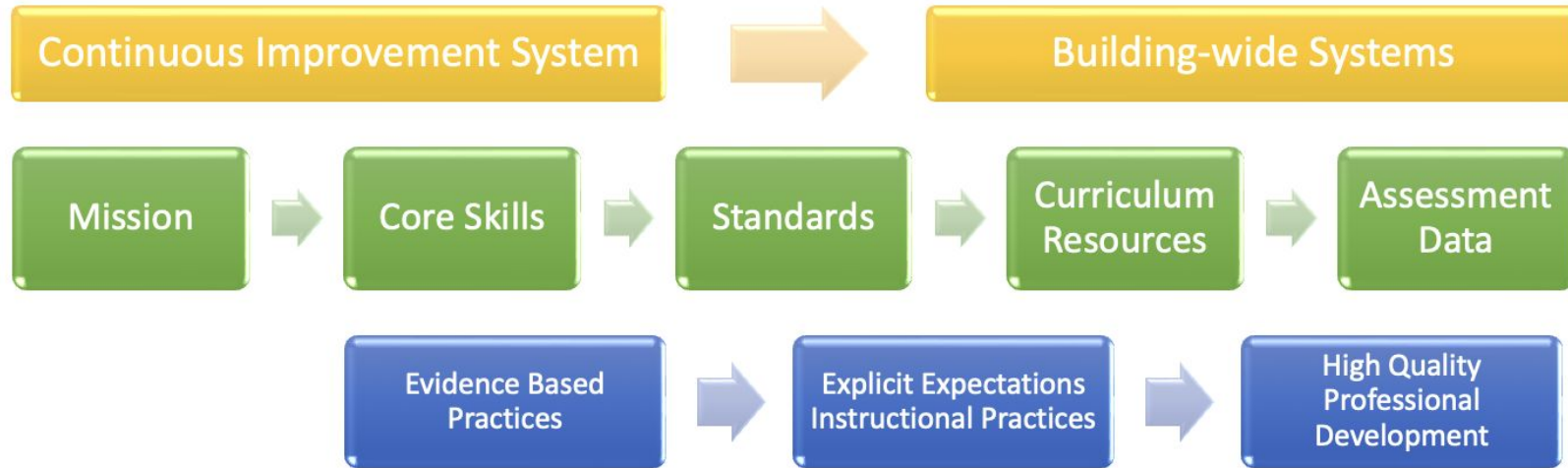
Program Improvement Team


Continuous Improvement Team



Continuous Improvement - Action Plans

5 Core Educational Practices





Program Evaluation - What Data Matters?

- Demographic Data
 - *Enrollment Trends*
- Perception Data
 - *Empowering Staff, Families, and Students*
- Core Skills Data
 - *Educational Benefit*
- Student Outcome Data
 - *Preparing Students for Community, Career and Life*

Special Education Center Programs

2022-2023 Impact Report



Deaf & Hard of Hearing Visual Impairment Services



Joanne Platt
DHH/VI
Supervisor



Debi Burkhardt
Oral Deaf
Coordinator



Brandi Czechowskyj
Total Communication
Coordinator



OUR STUDENTS

20 STUDENTS
BIRTH-5 YEARS

100 STUDENTS
K-12

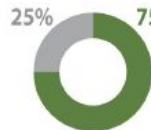
OUR PARENTS SAY



My child is learning the necessary skills to reach their highest potential.



My child's school collaborates well with my family.



My child's school has strong partnerships with community agencies.

■ Agree ■ Neutral

STUDENT SUCCESS

6

STUDENTS EXITED
THE PROGRAM

6/6 STUDENTS EARNED A DIPLOMA

4/6 STUDENTS ENROLLED IN POST-
SECONDARY EDUCATION

2/6 STUDENTS GAINED
INDEPENDENT EMPLOYMENT

90% STUDENTS CONNECTED
TO LOCAL AGENCIES



OUR STUDENTS

20 STUDENTS
BIRTH-5 YEARS

56 STUDENTS
K-12

STUDENT SUPPORTS

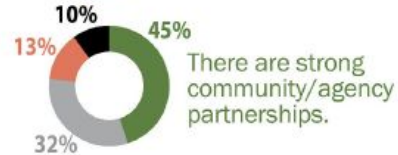
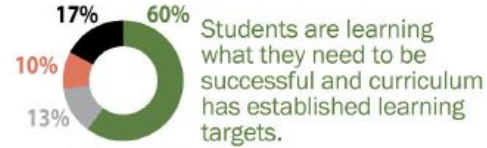
21

AMERICAN SIGN LANGUAGE
INTERPRETERS

80%

AVERAGE TIME SPENT
IN GENERAL EDUCATION
CLASSES WITH
INTERPRETERS

OUR STAFF SAY



■ Agree
 ■ Disagree
 ■ Neutral
 ■ Unsure

*Results from Center Programs Staff Survey,
30 Respondents*



Lincoln Pines



Lisa Merritt
Lincoln School
Principal



Todd Jones
Lincoln Developmental
Principal



Renee Hordyk
Pine Grove
Principal



OUR STUDENTS

207	K-12 STUDENTS	104	STUDENTS WITH AUTISM
150	YOUNG ADULTS AGE 18-26	77	STUDENTS WITH COGNITIVE IMPAIRMENT (CI)
357	TOTAL STUDENTS	176	STUDENTS WITH SEVERE MULTIPLE IMPAIRMENTS (SXI)



STUDENT SUCCESS

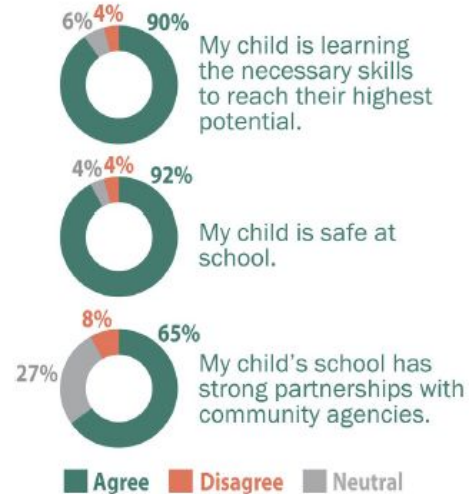
15
STUDENTS EXITED THE PROGRAM

13/15 STUDENTS WITH AGENCY CONNECTIONS

5

STUDENTS TRANSFERRED TO LOCAL DISTRICTS

OUR PARENTS SAY



Results from Center Programs Family Survey, 67 Respondents

Kent Education Centers

KEC



Keith Hutchins
KEC Oakleigh
Principal



Kevin Zashak
KEC Beltline
Principal

OUR STUDENTS

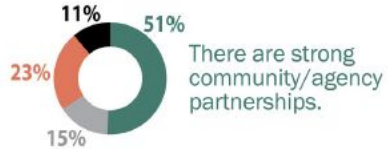
48 STUDENTS
K-8

STUDENT SUCCESS

10

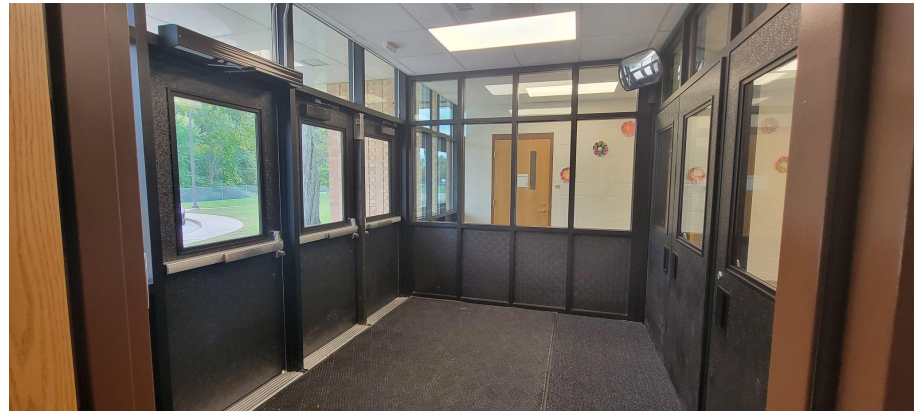
STUDENTS TRANSITIONED
BACK TO LOCAL/REGIONAL
PROGRAM

OUR STAFF SAY



■ Agree
 ■ Disagree
 ■ Neutral
 ■ Unsure

*Results from Center Programs Staff Survey,
12 Respondents*





OUR STUDENTS

50 STUDENTS
GRADE 9-12

20 YOUNG ADULTS
AGE 18-26

STUDENT SUCCESS

4
STUDENTS EXITED
THE PROGRAM

4/4 STUDENTS EXITED WITH
INDEPENDENT EMPLOYMENT

4/4 STUDENTS EXITED WITH
LOCAL AGENCY CONNECTION

OUR PARENTS SAY



■ Agree ■ Neutral

*Results from Center Programs Family Survey,
10 Respondents*



Empower U

Kent ISD Transition Services



Heather Sneider
Transition Services
& Empower U
Assistant Director



John Kleff
Empower U **North**
Administrator



Bill Behrendt
Empower U **Central**
Administrator



Nic Bond
Empower U **South**
Adminstrator





OUR STUDENTS

295 YOUNG ADULTS
AGE 18-26

STUDENT SUCCESS

48 STUDENTS EXITED
THE PROGRAM

90%

EMPLOYED OR ENGAGED
IN VOLUNTEER/
COMMUNITY ACTIVITIES
POST-EXIT

20 INDEPENDENT EMPLOYMENT

15 SUPPORTED EMPLOYMENT

13 VOLUNTEER/COMMUNITY
INVOLVEMENT

97%

CONNECTED TO AN
AGENCY POST-EXIT

47 CONNECTED AND ACTIVELY
ENGAGED

1 NOT CONNECTED

Young Adults - Community Partners

- Corwell Health
- Mary Free Bed
- Kent District Library
- Grand Valley State University
- Cornerstone University
- Kuyper College
- Meijer
- CompRenew
- YMCA
- Goodwill

Potential - Community Partners

- Special Olympics Building
- Meijer - Rockford



Thank you for your support

Questions

**Special Education
Center Programs
Kent ISD**