



STUDENT DEMOGRAPHICS

2024-2025

TABLE OF CONTENTS

<u>TOPICS</u>	<u>PAGE(S)</u>
Cover Letter	3
District Sites	4
Third Friday Count K-12	5
Enrollments	6
District Ethnic Enrollments	7
Free and Reduced Meals	8
Analysis of Transfer Students	9
Open Enrollments	10
Student Movement Trends	11
Home-Based Education Students	12
Immigrant/Refugee Enrollments	13-14

TO: Board of Education
Cale Bushman, Superintendent of Schools
FROM: Ralph Williams, Interim Director of Technology and Media Services
DATE: October 22, 2024
RE: 2024-2025 Student Demographics

Each school year, the District completes an analysis of our student demographic information based on the state-mandated Third Friday in September Count. This information illustrates short and long-term trends. The data provides key information to inform both instructional and financial decisions. Finally, the data are used to describe our current conditions to organizations or in grant writing processes.

Important highlights from the full report follow:

- ❑ Enrollment in grades 4K-12 decreased this year by 54 students for a total District enrollment of 7,722.
- ❑ Analysis of available data reveals 444 students moved into the Wausau School District while 341 students moved out of the District. These numbers are very similar to the 2022-2023 school year. The number of students moving out of the District decreased slightly compared to last year's 345.
- ❑ The overall number of students leaving the Wausau School District through Open Enrollment increased by 12, for a total of 520 students. Of the 508 students Open Enrolling out, 125 are new applicants this year. The overall number of students entering the Wausau School District through Open Enrollment increased by 16 for a total of 275. Of the 275 students Open Enrolling in, 88 students are new applicants.
- ❑ Kindergarten enrollment continues to attract approximately 85% of available 5-year old students in the Wausau School District area.
- ❑ The Wausau School District continues to support a diverse student body with 38% of students representing a race other than white. Additionally, approximately 8.8% of students are English Learners and receive support.
- ❑ As of the 2023 Third Friday Count, 113 students are listed at Home Based Education which is a decrease of 10 students.
- ❑ The District Free/Reduced lunch overall average is 49.83% compared to 52% for 2023-2024 school year.

Please contact my office if you have any questions about the data presented.

Wausau School District Sites

Elementary Campuses

Franklin
Thomas Jefferson
John Marshall
Stettin

Grant
G.D. Jones
Rib Mountain

Hawthorn
Lincoln
Riverview

Hewitt-Texas
Maine
South Mountain

Middle School Campuses

Horace Mann

John Muir

High School Campuses

Wausau East

Wausau West

Charter Campuses

Enrich, Excel, Achieve, Learning Academy (EEA)

Wausau Area Montessori Charter School (Montessori)

Red Granite Charter School
(Red Granite)

Wausau Area Virtual Education
(WAVE)

Alternative Campuses

Prepare, Empower, Education,
Rebuild
(PEER)

Project LIFE
18-21 Transition Program

Alternative High School

Wausau School District
Pre - K - 12 Enrollment Information
Third Friday Count
September 20, 2024

	Franklin	Grant	Hawthorn Hills	Hewitt Texas	Thomas Jefferson	G.D. Jones	Lincoln	Maine	4K Outreach Sites	John Marshall	Red Granite	Rib Mountain	Riverview	South Mountain	Stettin	Montessori	Horace Mann	John Muir	EEA	East	West	Wave	2024 Total	3rd Friday 2023	Difference
E3	0	0	5	0	0	24	0	0	0	0	0	3	0	0	0								32	45	-13
E4	0	0	0	0	0	15	0	0	0	0	0	0	0	0	0								15	14	1
E5	0	0	0	0	0	0	0	0	0	0	0	0	0	0	0								0	0	0
4 Year Old Kindergarten	0	0	35	0	80	91	0	0	95	0	15	0	56	0	0	7							379	387	-8
Kindergarten	27	33	25	16	48	35	30	36		46	13	25	45	37	48	16						4	484	482	2
First	31	27	36	11	43	42	31	30		29	12	36	52	38	46	15						4	483	508	-25
Second	31	29	34	7	53	48	29	34		31	4	32	67	42	53	14						4	512	568	-56
Third	30	36	36	15	52	42	47	45		43	7	37	72	35	52	18						2	569	546	23
Fourth	38	31	28	19	44	52	29	44		39		25	74	42	70	17						4	556	551	5
Fifth	24	33	28	17	52	48	38	40		43		39	76	41	58	23						1	561	515	46
Sixth																4	192	314	1			6	517	519	-2
Seventh																4	205	306	2			7	524	577	-53
Eighth																3	236	346	6			9	600	582	18
Ninth																			3	227	362	12	604	595	9
Tenth																			12	220	359	27	618	593	25
Eleventh																			10	226	342	31	609	658	-49
Twelfth																			4	219	397	39	659	636	23
2024 Total	181	189	227	85	372	397	204	229	95	231		194	445	235	327	121	633	966	38	892	1460	150	7722	7776	-54
2023 Total	191	172	198	87	375	440	221	240	107	223		209	495	223	313	101	662	973	33	896	1442	175	7776		
Difference	-10	17	29	-2	-3	-43	-17	-11	-12	8	0	-15	-50	12	14	20	-29	-7	5	-4	18	-25	-54		

2024 Preschool Enrollment	426
2023 Preschool Enrollment	446
Enrollment Difference	-20

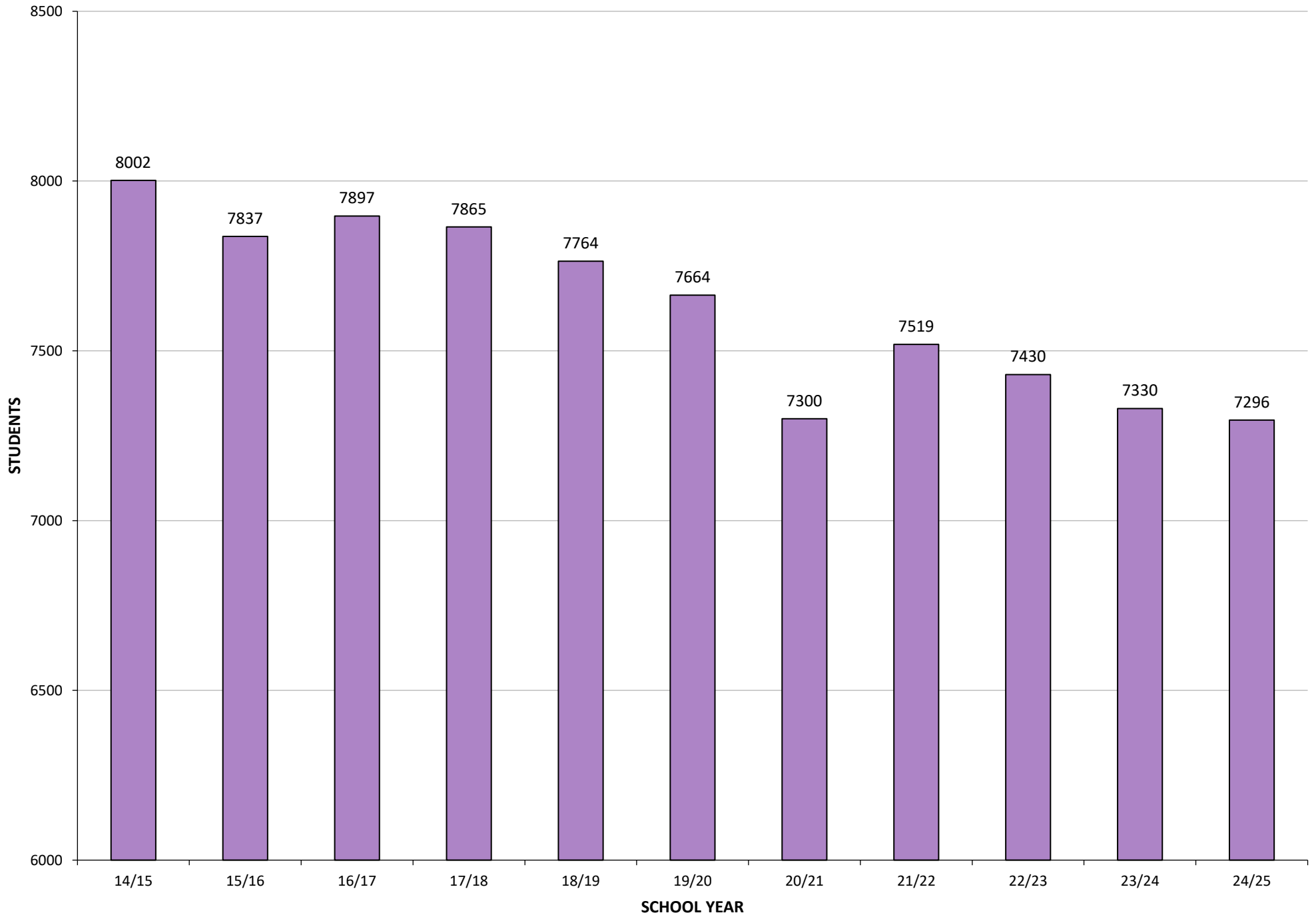
2024 Elementary Enrollment	3165
2023 Elementary Enrollment	3170
Enrollment Difference	-5

2024 Middle School Enrollment	1641
2023 Middle School Enrollment	1678
Enrollment Difference	-37

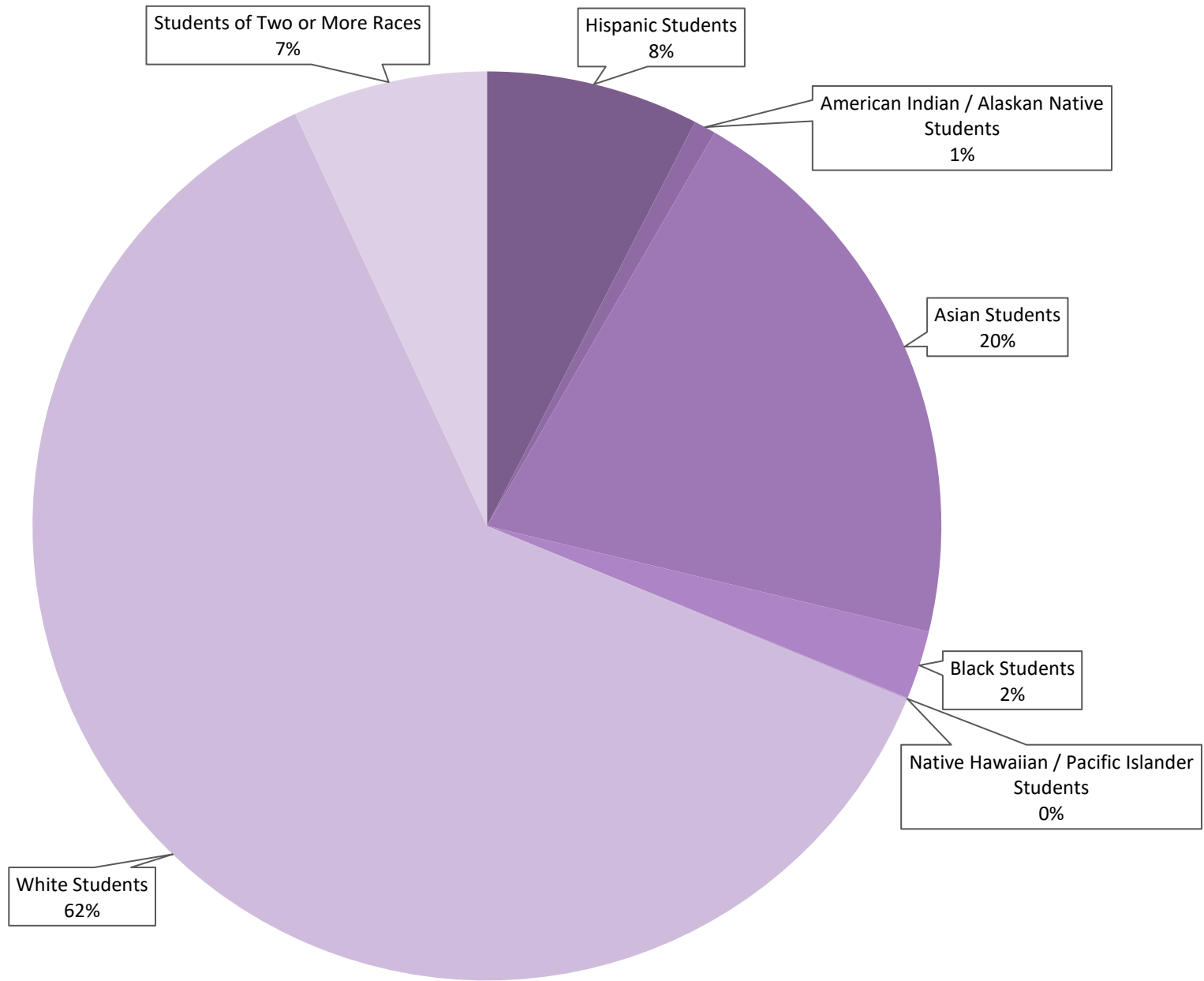
2024 High School Enrollment	2490
2023 High School Enrollment	2482
Enrollment Difference	8

2024 K-12 Enrollment	7296
2023 K-12 Enrollment	7330
Enrollment Difference	-34

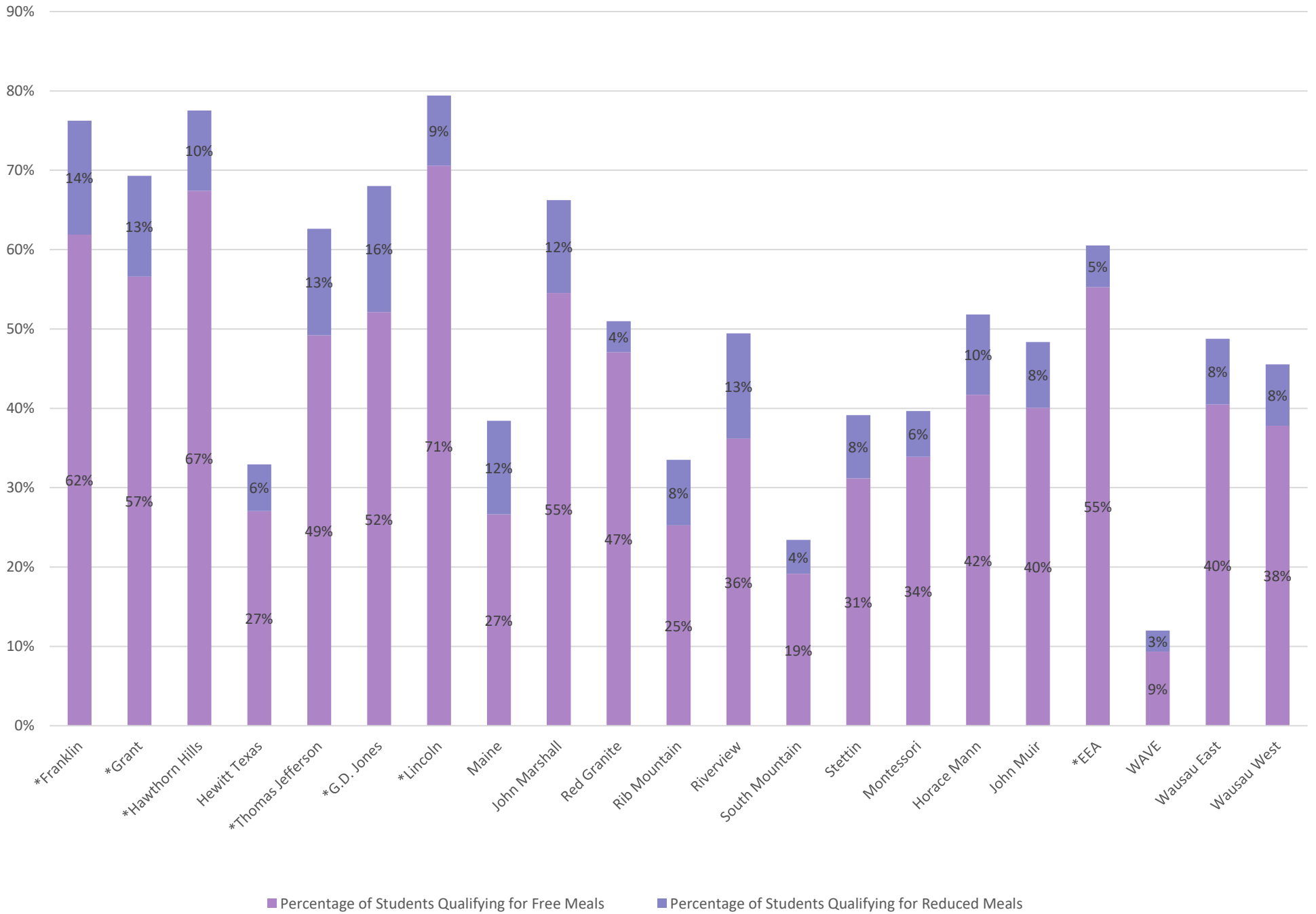
**Wausau School District
K-12 Enrollments
September 20, 2024**



Wausau School District
Ethnicity Percentages
September 20, 2024



Wausau School District Free and Reduced Meal Percentages September 20, 2024



Wausau School District Analysis of Transfer Student September 20, 2024

Moving INTO the District FROM:

Moving OUT OF the District TO:

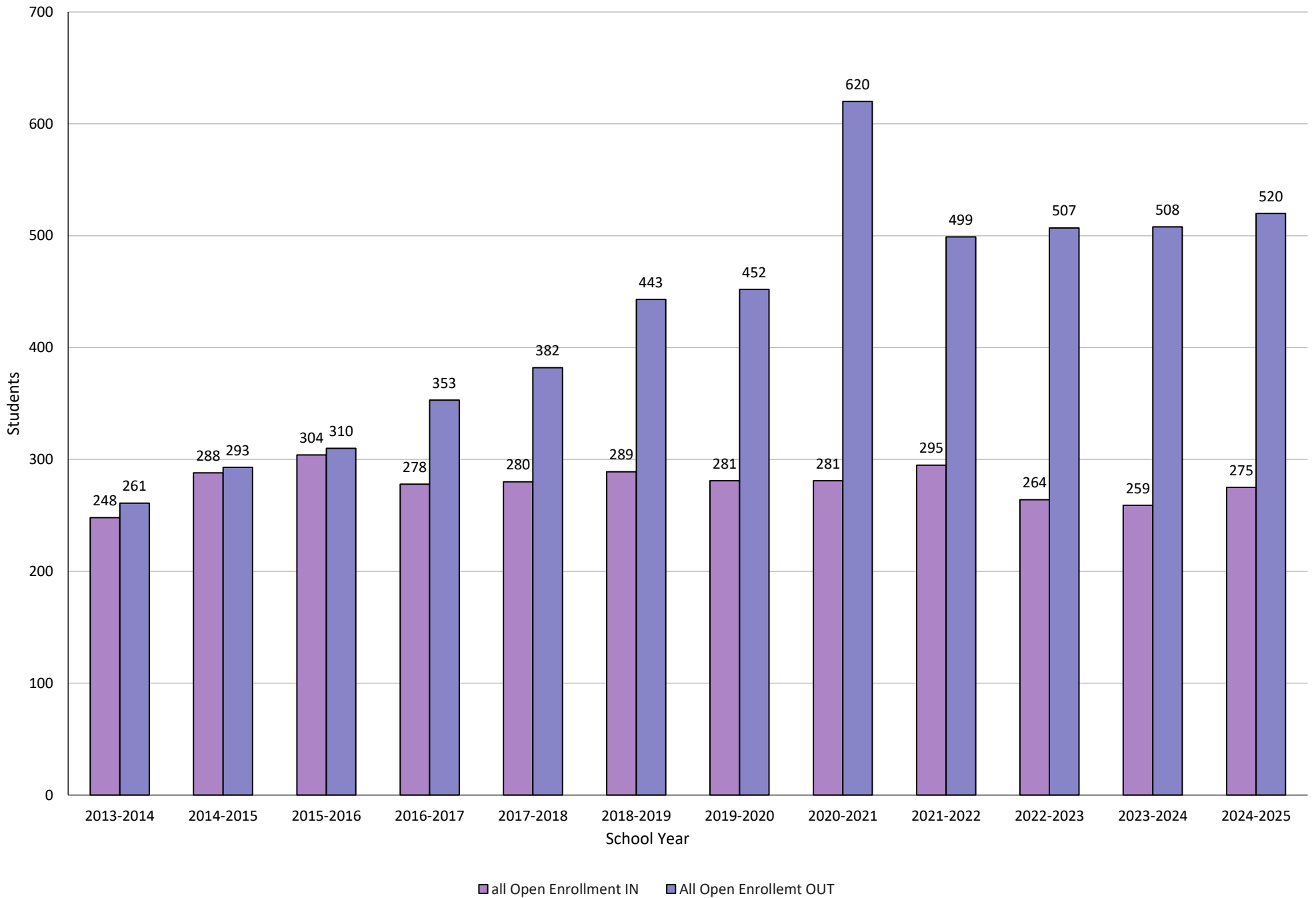
Elementary School	Middle School	High School	FROM or TO	Elementary School	Middle School	High School
95	10	26	Private School	66	5	4
39	9	24	DC Everest	45	16	5
5	3	4	Mosinee	11	3	1
8	2	6	Merrill	7	1	2
2	0	2	Marathon	0	1	0
8	7	6	Home Based Ed.	10	3	2
45	19	33	Other WI School Districts	48	19	25
28	21	15	Out of State	40	12	11
17	3	7	Out of Country	3	1	0
0	0	0	Out of Country	0	0	0
247	74	123		230	61	50

Total	444
--------------	------------

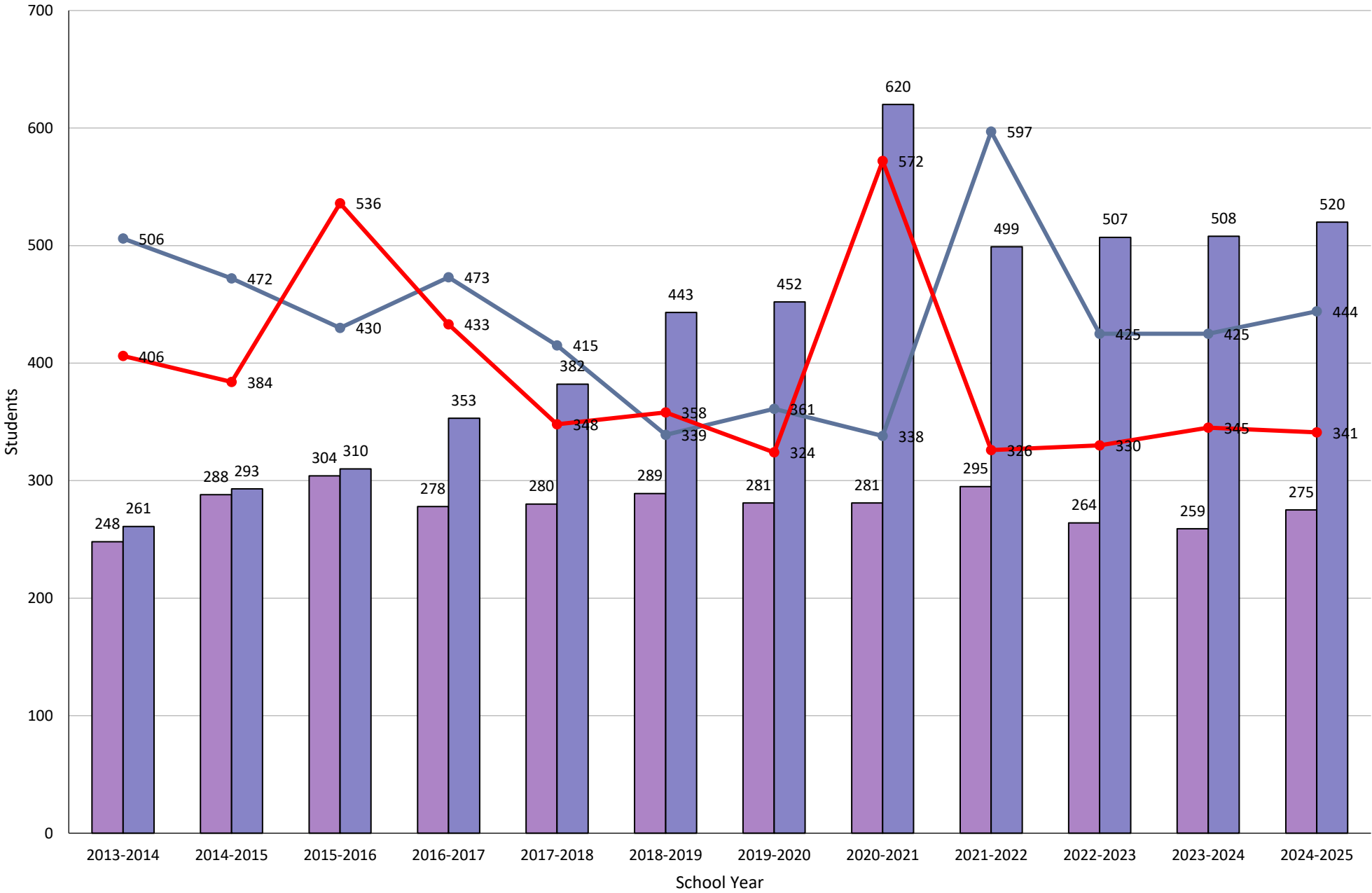
Total	341
--------------	------------

*Includes students who attended the Wausau School District for at least one school day.

Wausau School District
Open Enrollments
September 20, 2024

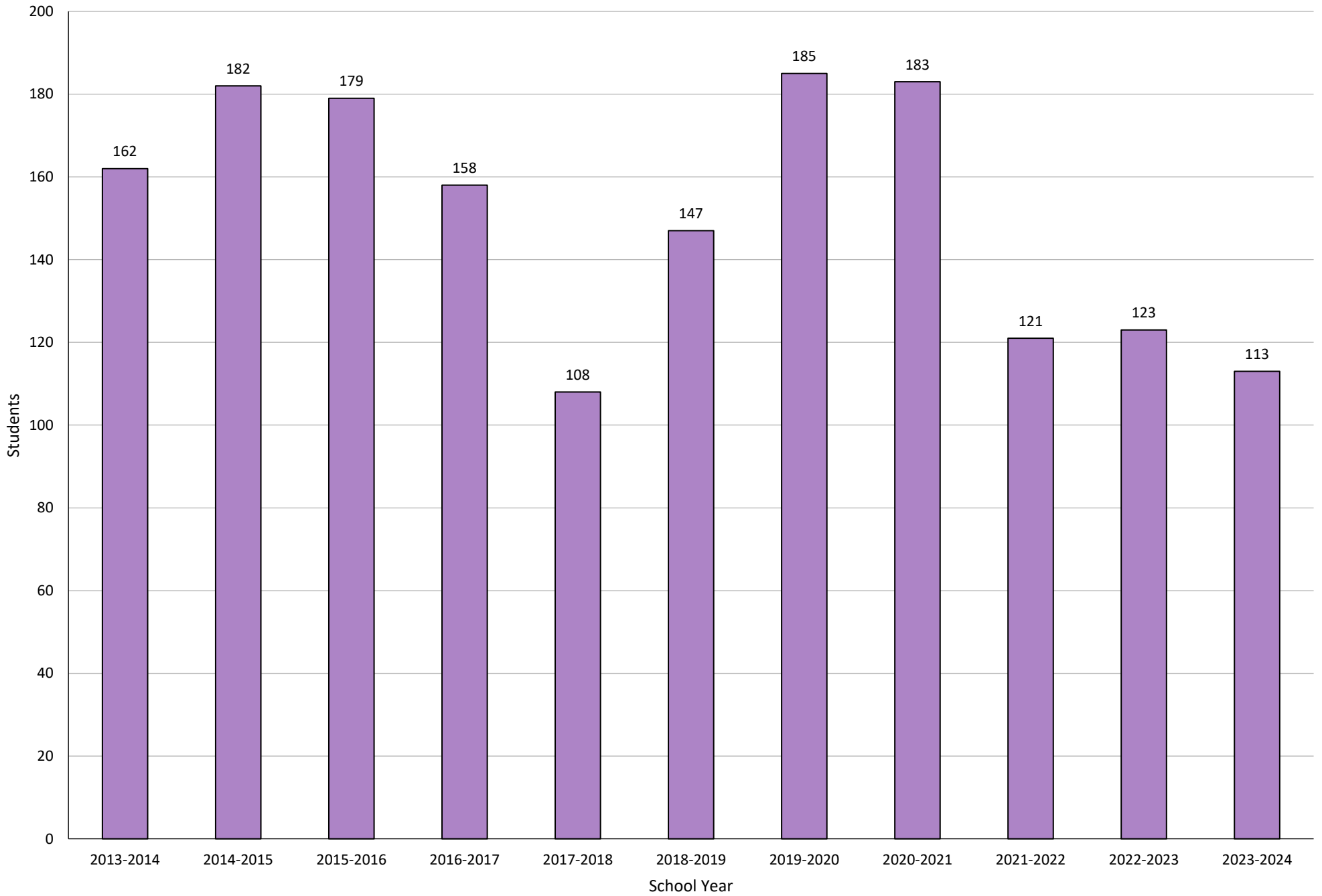


Wausau School District Student Movement Trends September 20, 2024



All Open Enrollment IN
 All Open Enrollment OUT
 Transfer IN
 Transfer OUT

Wausau School District
Home-Based Education Students
2024-2025



Wausau School District
Immigrant/Refugee Student
2024-2025

Country Of Origin	Number of Students
Afghanistan	34
Mexico	23
Nicaragua	11
Congo (Democratic Republic of the)	10
Laos	10
Bangladesh	7
Honduras	7
Malaysia	7
Vietnam	7
Tanzania, United Republic of	6
Venezuela	6
India	5
Malawi	5
Zambia	5
Albania	4
Philippines	4
Somalia	4
Ukraine	4
Uganda	4
Brazil	3
Burma	3
Colombia	3
Cuba	3
Jordan	3
Nepal	3
Central African Republic	2
China	2
Myanmar	2
Syrian Arab Republic	2
Zambia	2
Ethiopia	1
Indonesia	1
South Korea	1
Sri Lanka	1
Netherlands	1
Peru	1
South Africa	1
Total Number of Students	198

Wausau School District
Immigrant/Refugee Students
2024-2025

