

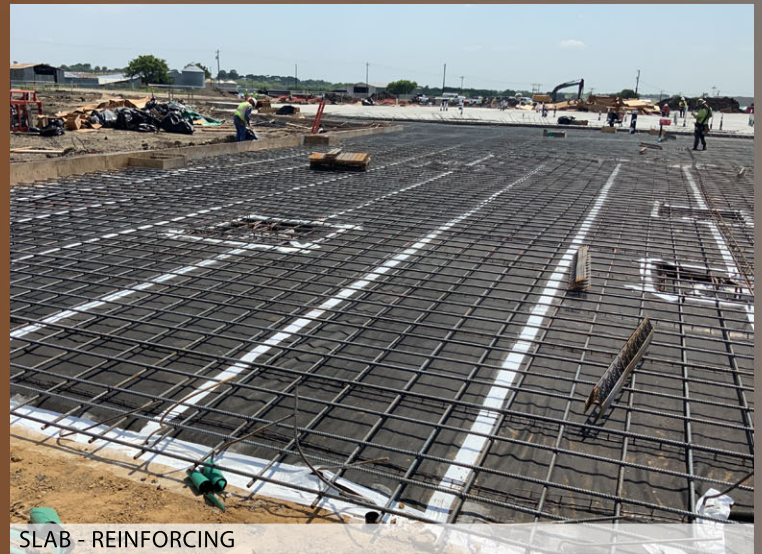
PROJECT UPDATE

JUNE 2021

CELINA MIDDLE SCHOOL



SLAB INSTALLED - AREA A



SLAB - REINFORCING



UNDERSLAB UTILITIES



GRADE BEAM

CONSTRUCTION STATUS

SITE WORK

- EARTHWORK - ON-GOING
- SITE UTILITIES - ON-GOING
 - STORM SEWER
 - WATER LINES
 - ELECTRICAL SERVICE
 - SANITARY SEWER
- PAVING - ON-GOING
- ROUGH GRADING
- CONCRETE PARKING
- FIRE LANES

LOOKING FORWARD

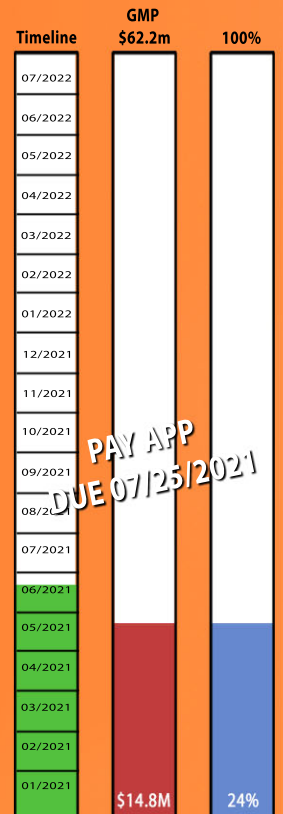
- GAS LINE

BUILDING

- STRUCTURAL STEEL DELIVERY - ON-GOING
- SHOP DRAWING SUBMITTALS - ON-GOING
- GRADE BEAMS - ON-GOING
- UNDERSLAB UTILITIES - ON-GOING
- PRE-SLAB INSTALLATION - GRADING, REINFORCING - ON-GOING
- SLAB INSTALLATION - ON-GOING

LOOKING FORWARD

- STRUCTURAL STEEL INSTALLATION



Designing Schools . . . With Kids in Mind!

www.claycomb.net

PROJECT UPDATE

