



# Performance Services

---

## Roselle SD 12

July 20, 2021



**Performance Services, Inc.**  
700 East Butterfield Road, Suite 100  
Lombard, Illinois 60148  
p: 847-466-7720 f: 847-466-7733  
[www.performanceservices.com](http://www.performanceservices.com)

## Background

- Energy Savings for Phase 1 Project
  - Over \$43,000/year Savings
  - Other Saving Opportunities?
- Solar Power was Investigated as part of Phase 1 Project
- Decided to Move Solar to Phase 2  
Allowing District to:
  - Repair Roofs
  - Determine 2 Years of Energy Use
- Solar Power Could Save Another \$48,000/year More, Virtually Eliminating the Electric Bills at Both Schools



Potential Roselle Solar Locations



Lake Park HS Solar Installation Example

## **Financial Incentives**

- Future Energy Jobs Act (FEJA) – Legislation that enabled Illinois’ solar incentives
- Net Metering – Allows excess solar production to be credited to future bills
- ComEd Incentive – Cash incentive paid in year one by Utility for installation of solar
- Renewable Energy Credits (RECs) – Cash incentives paid in first five years of project subject to availability. Program closed now but may be available in 2022



**SOLAR PROJECT - SUMMARY**

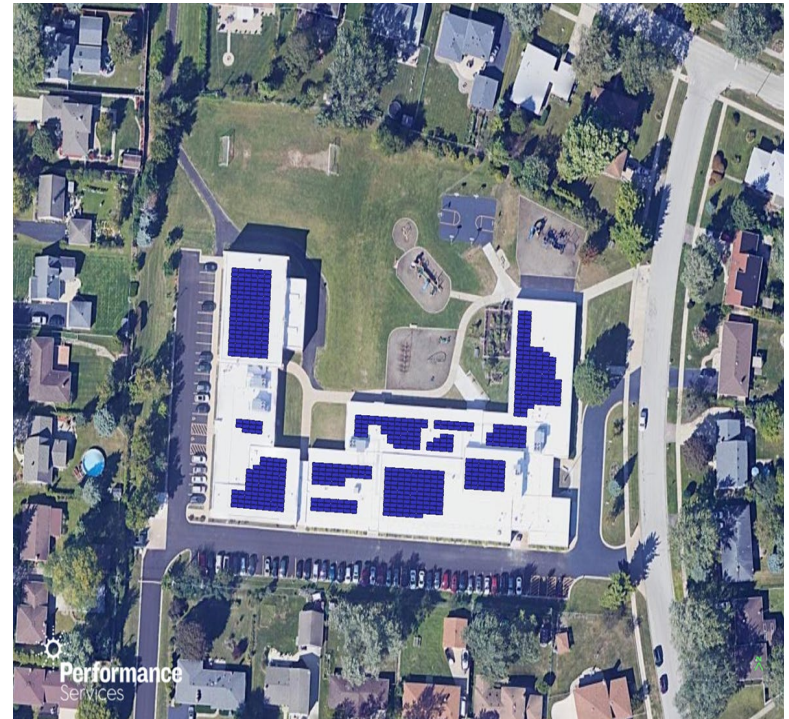
Solar PV Project Sites: Rooftop Solar Arrays - Spring Hills Elementary and Roselle Middle Schools

Combined Solar PV System Summary

Solar PV kWdc System Size:	478.0 kWdc
Solar PV kWac System Size:	399.6 kWac
PV System Type:	Roof
PV System Annual Generation:	587,750 kWh
Bldg Annual Elec Usage:	588,177 kWh
Bldg Elec kWh Offset by Solar:	99.9%

Combined Project Financial Summary

PSI Turnkey Installation Budget:	\$	1,321,914
ComEd Rebate:	\$	119,500
Gross Savings in Year 1:	\$	148,875
Gross Savings over 20 Years:	\$	1,341,597
Gross Savings over 30 Years:	\$	2,253,488



Notes:

1. The estimated combined future REC incentive is \$383,000 - \$432,000.
2. REC Income is contingent upon future REC prices, availability, and approval in the Illinois Power Agency Adjustable Block Program
3. Rebate value is estimated based on 2020 values and is subject to change.
4. Solar array design and location is contingent upon roof condition, building structure analysis, and village and county approval.

## Benefits of Solar for Roselle

- Over \$2.2 million in savings over 30 years
- ComEd Incentive is about \$119,000
- Additional REC incentive could be up to \$500,000
- More predictable energy costs – Easier to budget
- Creates a living laboratory for students
- Proven technology (already completed at Lake Park HS)

## Next Step

### July-August 2021

- Complete roof analysis
- Firm up cost savings and financing approach

### September 2021

- Present to Administration and BOE detailed costs and savings
- Discuss any potential roof repairs or considerations

### October 2021

- Contract for project
- Secure financing

