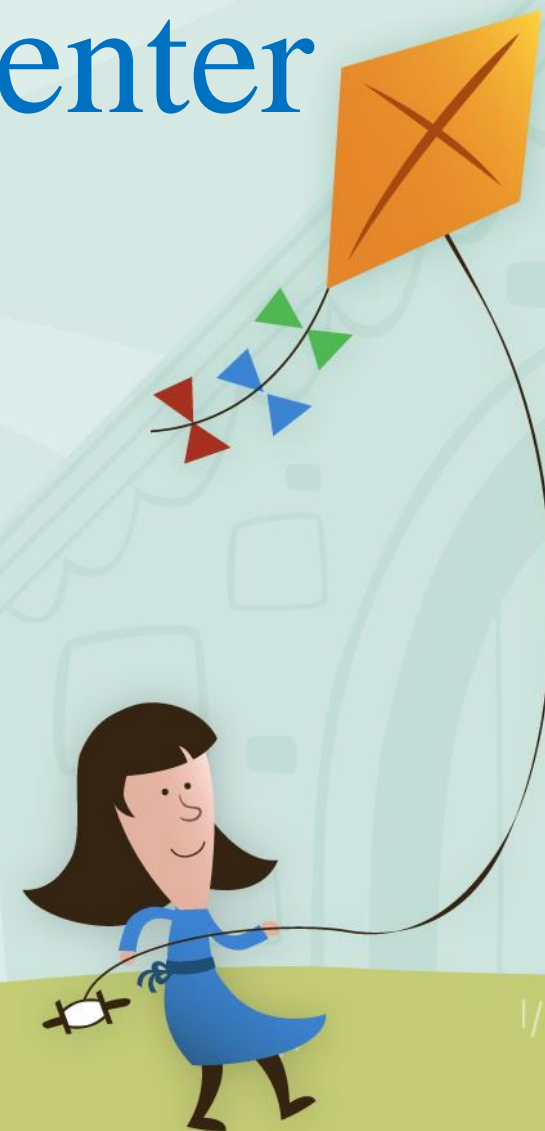


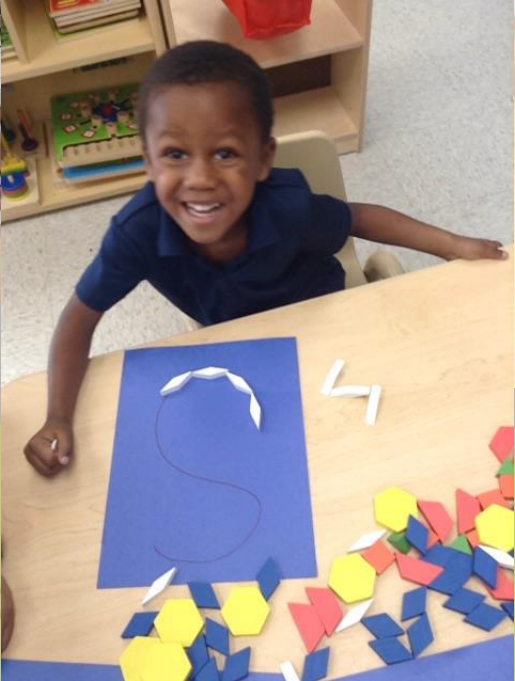
Moody Early Childhood Center

Second Quarterly Report

February 2022



Student Enrollment



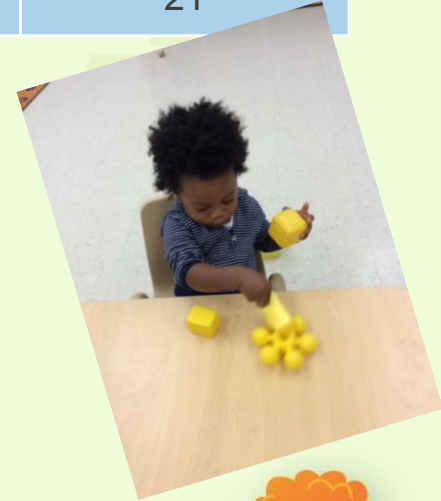


Demographic	Infant & Toddler	PK
Hispanic	27%	43%
AA	14%	32%
Caucasian	49%	19%
Other	9%	6%
SES	49%	85%
Full Pay	45%	15%

Classrooms	Ages	Number of Classrooms	Enrollment
Infants	6 wks-23 months	6	39
Toddlers	24 months-36 months	5	38
PreK3	3-4 years	11	128
PreK4	4-5 years	1	7
Afterschool	PK3-Kdg	3	21



Help us recruit!
Spaces are available!!



Staff Demographic and Certification

Ethnicity	Percentage
Hispanic	32%
African American	31%
Caucasian	27%
Other	1%

Degree	GED/HS	CDA	Asso	Bach	Bach – Alt Cert	Bach +Cert	Masters +
#	25	3	16	9	6	8	8
%	33%	4%	21%	12%	8%	11%	11%



Academics



Infant/Toddler Developmental Checklist

Age	6 wks – 5 months				6 - 11 months				12 - 17 months				18 - 23 months				24 - 36 months				36 months+			
	Dec	Jan	Apr	Jul	Dec	Jan	Apr	Jul	Dec	Jan	Apr	Jul	Dec	Jan	Apr	Jul	Dec	Jan	Apr	Jul	Dec	Jan	Apr	Jul
Health & Motor	80	50			100	92			85	77			62	90			15	46			58	64		
Lang & Lit	100	0			50	67			77	69			23	30			8	8			69	50		
Social Emotion	80	50			60	75			100	85			54	70			92	85			73	73		
Cognitive	80	50			70	92			85	77			38	30			54	85			54	59		
Overall	100	0			50	67			77	69			38	40			8	15			65	59		



PK3 – Academic Assessment

Skills Assessed	1 st Assessment	2 nd Assessment	3 rd Assessment	EOY	New Students	Returning Students
Capital Letter (10)	25%	46%			38%	94%
Lower Case (10)	18%	35%			29%	75%
Number (1-5)	26%	46%			39%	88%
Rote Counting (1-15)	9%	37%			31%	75%
Colors (11)	34%	53%			49%	81%
Shapes (6)	32%	66%			61%	100%

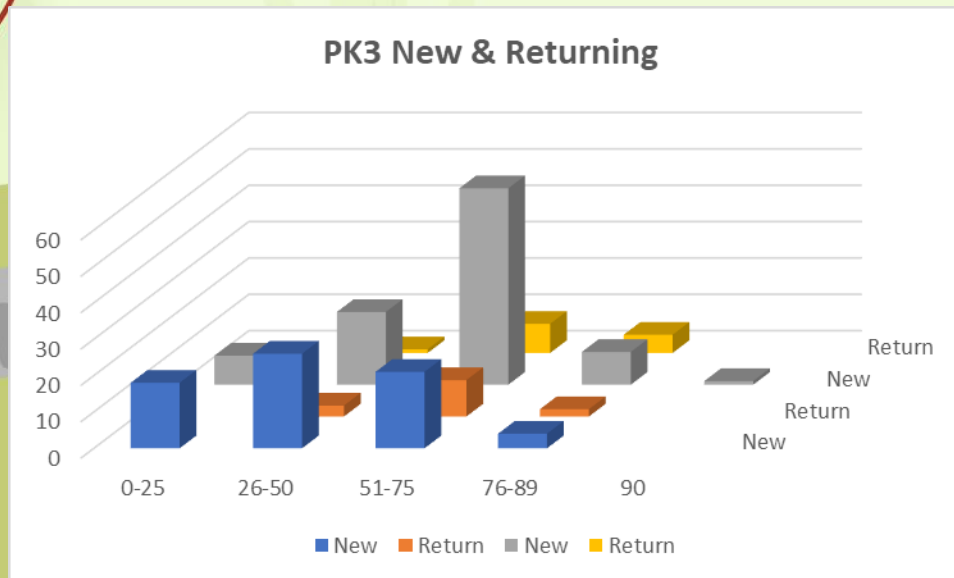
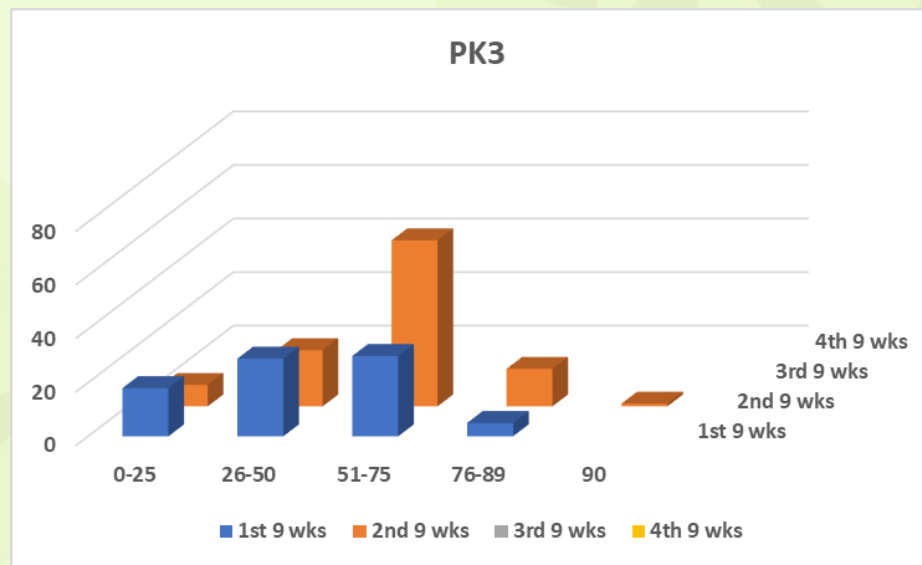


PK4 – Academic Assessment

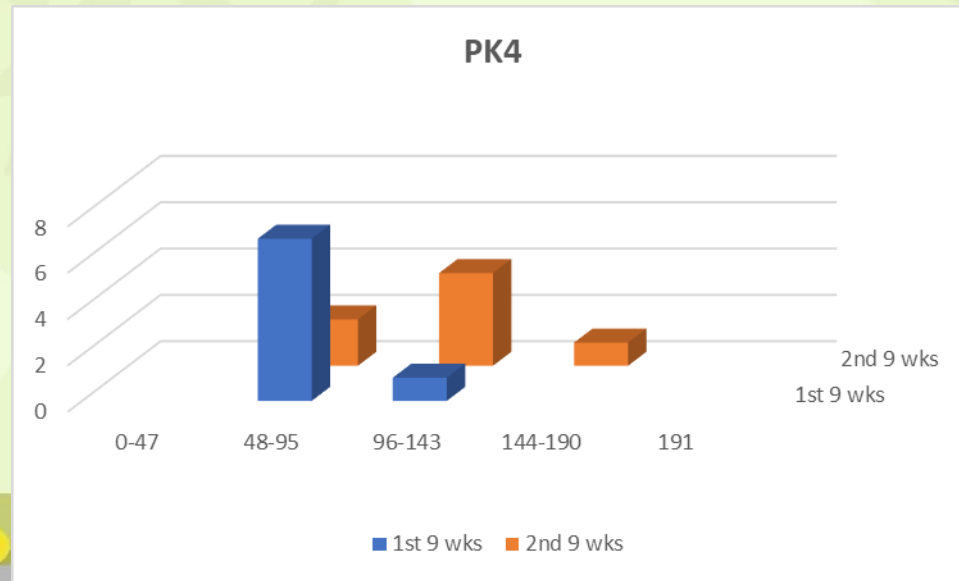
Skills Assessed	1 st Assessment	2 nd Assessment	3 rd Assessment	EOY	New Students	Returning Students
Capital Letter (20)	75%	86%			-%	86%
Lower Case (20)	63%	86%			-%	63%
Number (1-10)	50%	86%			-%	86%
Rote Counting (1-30)	38%	86%			-%	86%
Colors (11)	75%	86%			-%	86%
Shapes (6)	75%	71%			-%	71%



PK3 Vocabulary



PK4 Vocabulary



TANGO/CPALLS BOY

To be presented at the end of this presentation



Financial Reporting Goals



Financial Reporting Measures		2021-2022	2022-2023	2023-2024	2024-2025
#1a	Annual independent financial report meets expectations outlined in Texas Administrative Code §109.23 (relating to school district independent audits and agreed-upon procedures)	Yes			
#1ai	The annual independent audit must provide an audited balance sheet or Statement of Financial Position to district authorizers.	Yes			
#1aii	The annual independent audit must provide an audited income statement or Statement of Activities and Changes in New Assets to district authorizers.	Yes			
#1aiii	The annual independent audit must provide an audited statement of cash flows to district authorizers.	Yes			
#1aiv	The annual independent audit must provide notes to the audited financial statements to district authorizers.	Yes			
#1av	The annual independent audit must provide charter school board-approved budget with enrollment targets to district authorizers.	Yes			
#1avi	The annual independent audit must provide an annual debt schedule indicating the total principal and interest due to district authorizers.	Yes			
#1b	The Operating Partner shall obtain an unqualified audit opinion, in connection with the annual financial report.	Yes			
#1c	The Operating Partner must operate within available funding, and any budget variances must be addressed by modification of spending plans and practices.	Yes			
#1d	The Operating Partner will have a minimum of 30 days Cash on Hand.	Yes			





Community Partnerships



- Galveston ISD
 - Ball High School
- United Way
- Teen Health



- Urban Strategies
- Boys and Girls Club
- WorkSource Solutions
- Galveston Urban Ministries



- UTMB
- SMART Family Literacy
- Area Childcare Directors
- Galveston Diaper Bank
- Galveston Own Farmer's Market
- Little Red Box



- Family Service Center
- BBVA
- Gulf Breeze
- Galveston Food Bank
- St. Vincent's House
- Ironman



- Galveston Houston Immigration Representation Project (GHIRP)
- WIC
- Steals and Deals



- 3919 Enterprises
- Galveston Children's Museum
- Kroger



Questions???

Comments???

Karin Miller, Executive Director (409) 761-6932

Antonio Ford, Deputy Executive Director (409) 761-6936

Betty Massey, Board President

