



Superintendent Report

Regular Board Meeting

June 11, 2025

Istation, iMSSA, and PSAT assessments are important components of assessing where our students are which allows us to monitor their progress throughout the year.

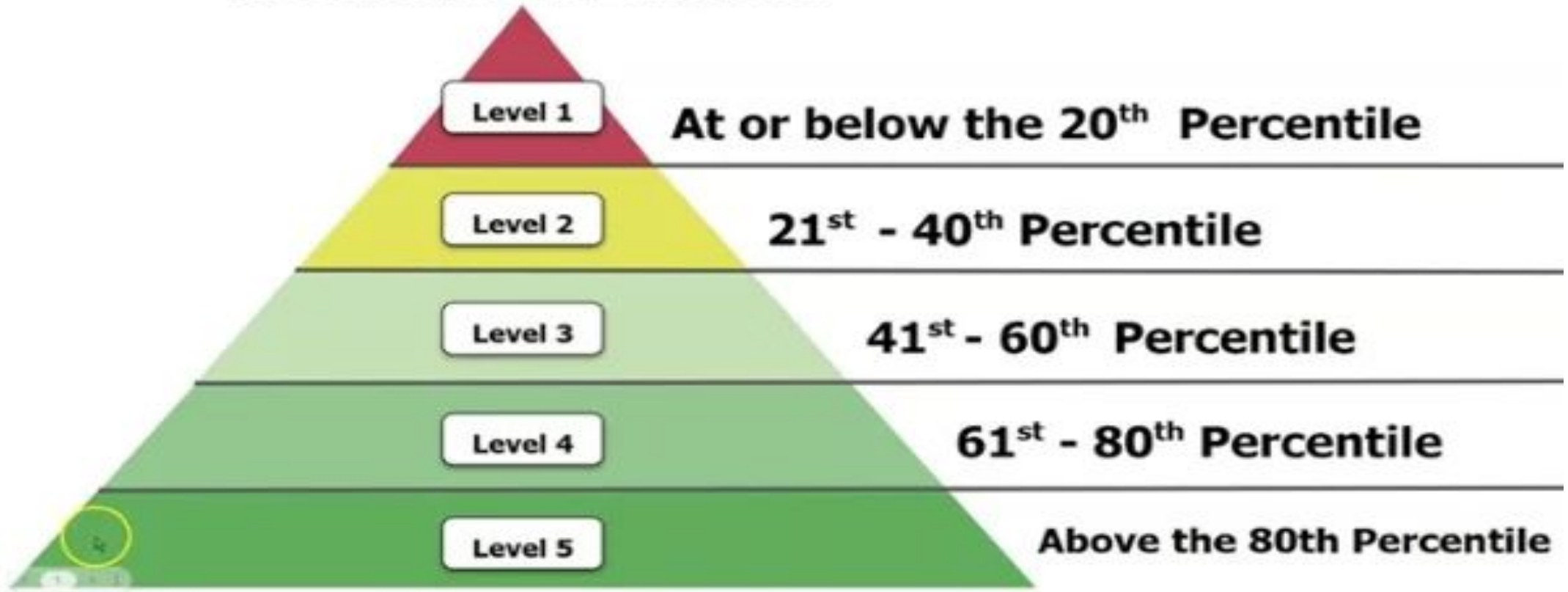
- Istation- Grades K-3 in Reading and Math
- iMSSA- Grades 3-8 in Reading and Math
- PSAT- Grades 9-11 to Reading and Math

These assessments play a vital role in informing teachers on where students are academically, areas they are struggling or have shown improvements. By utilizing this data teachers are also able to reflect on their own instructional practices.



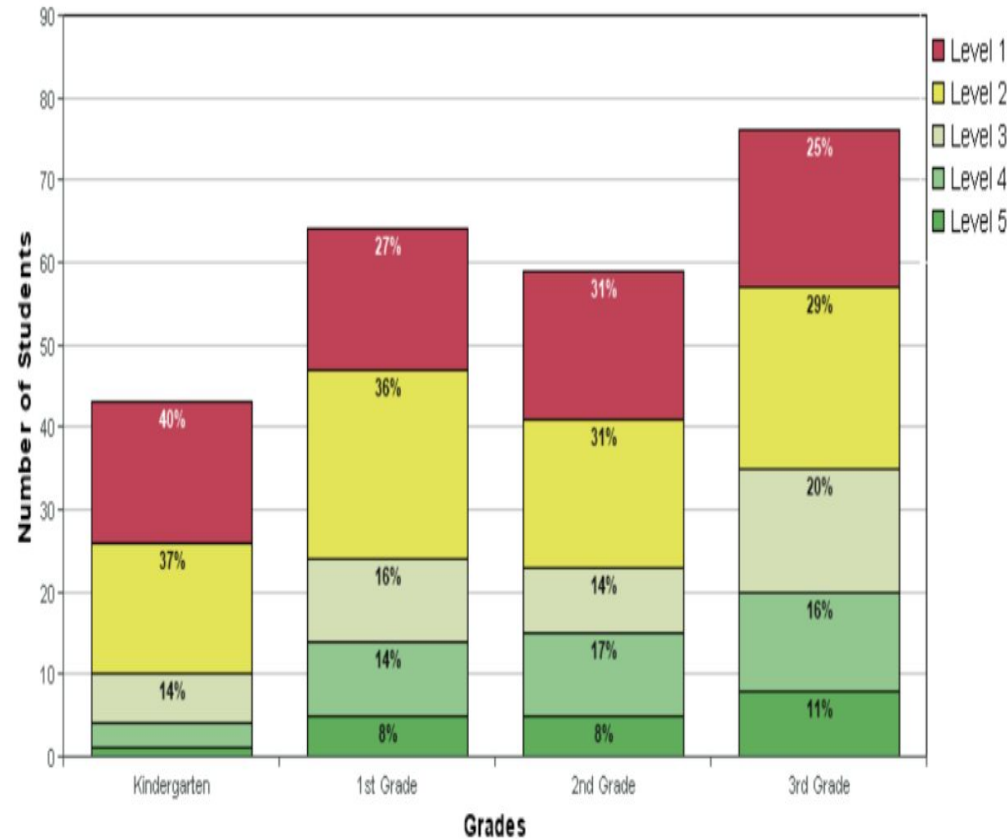
Student Performance Levels

Based on Istation's ISIP Assessment



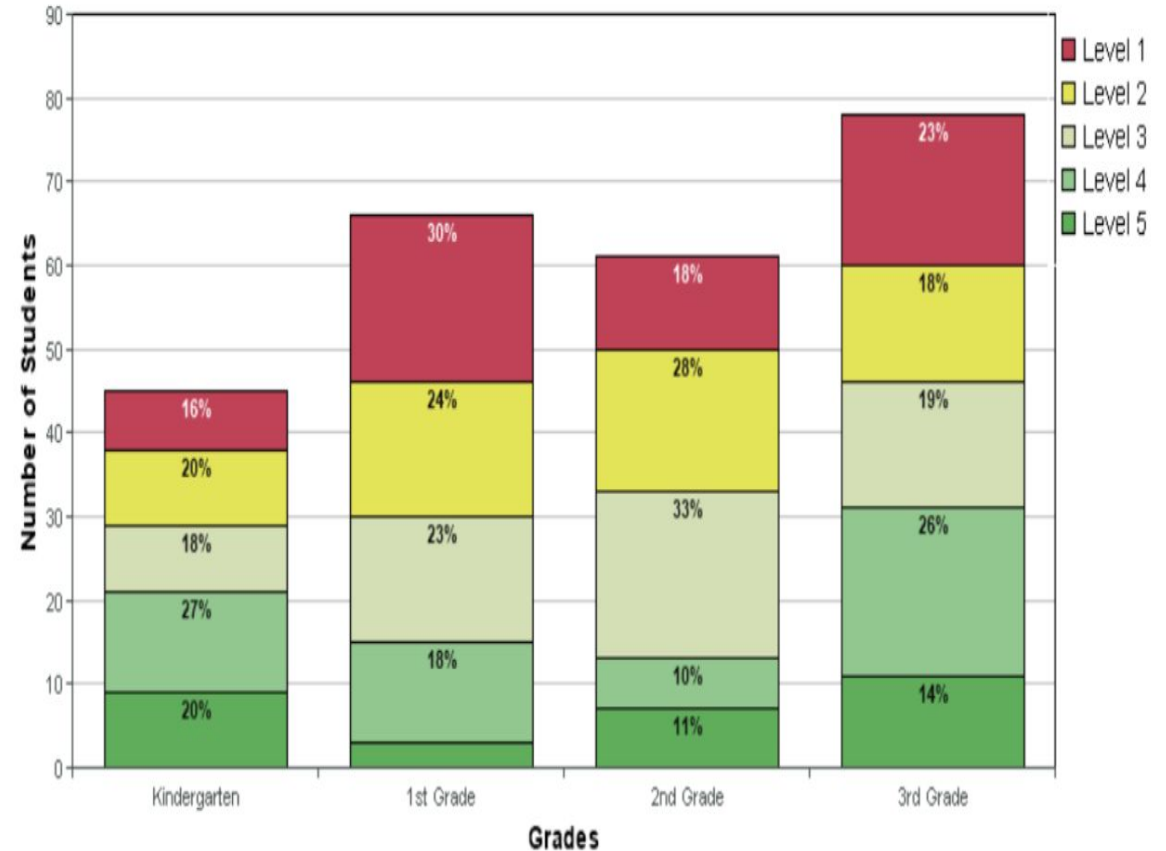
McCoy- Reading ISIP Data Comparison

ISIP Early Reading Summary (September 2024)



Total number of students who have been assessed using ISIP Early Reading in September: 242

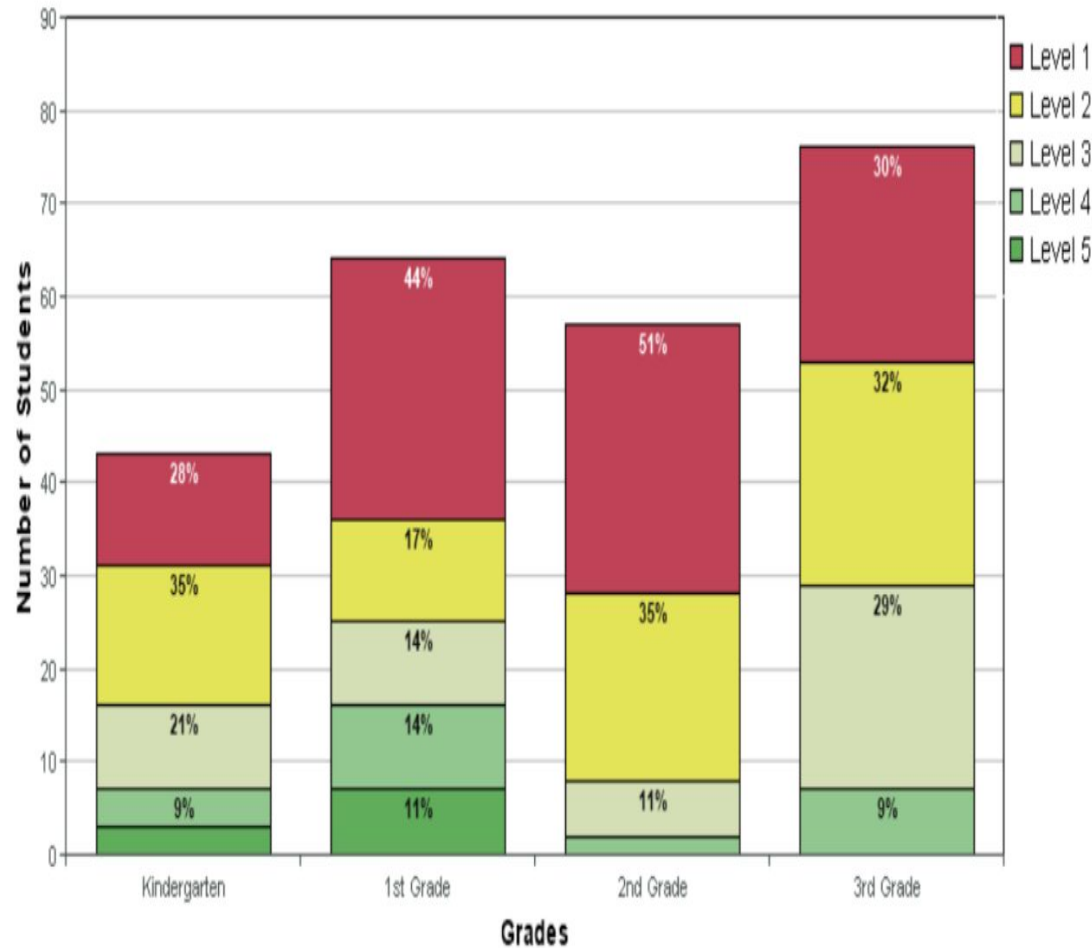
ISIP Early Reading Summary (May 2025)



Total number of students who have been assessed using ISIP Early Reading in May: 250

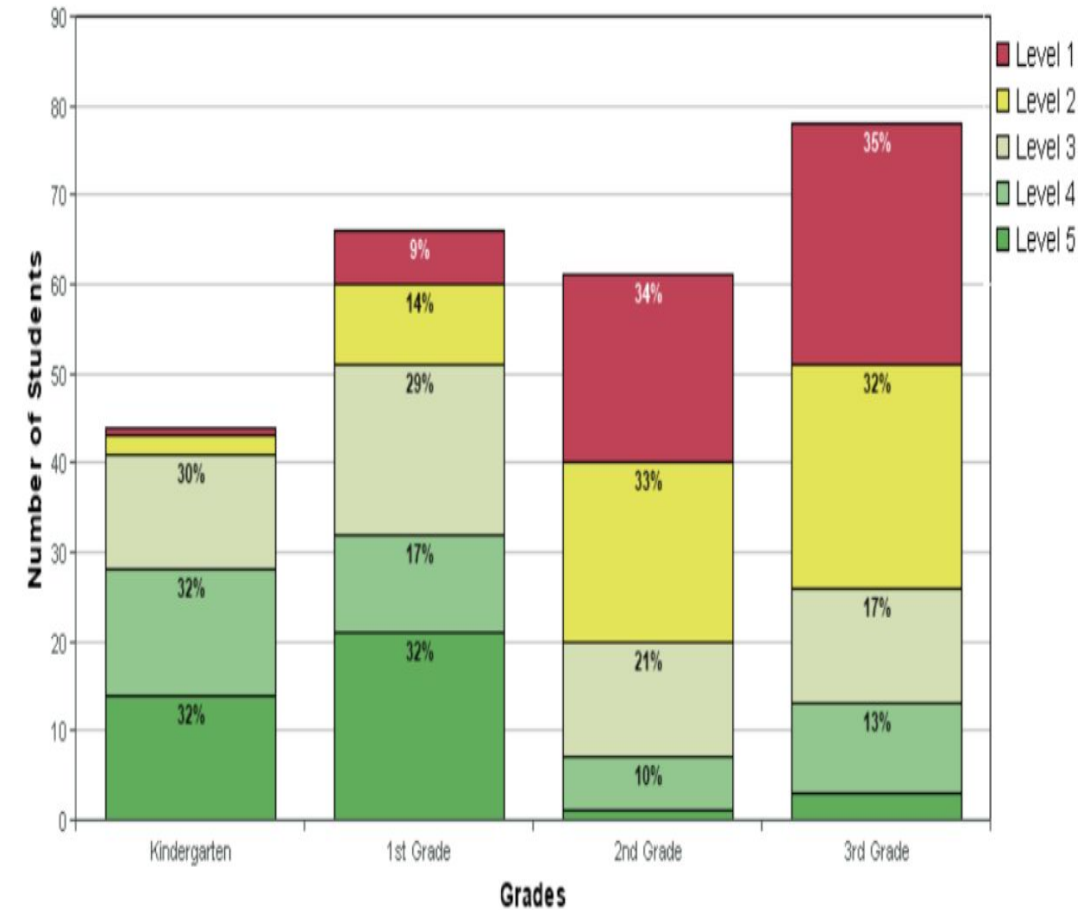
McCoy- Math ISIP Data Comparison

ISIP Math Summary (September 2024)



Total number of students who have been assessed using ISIP Math in September: 240

ISIP Math Summary (May 2025)

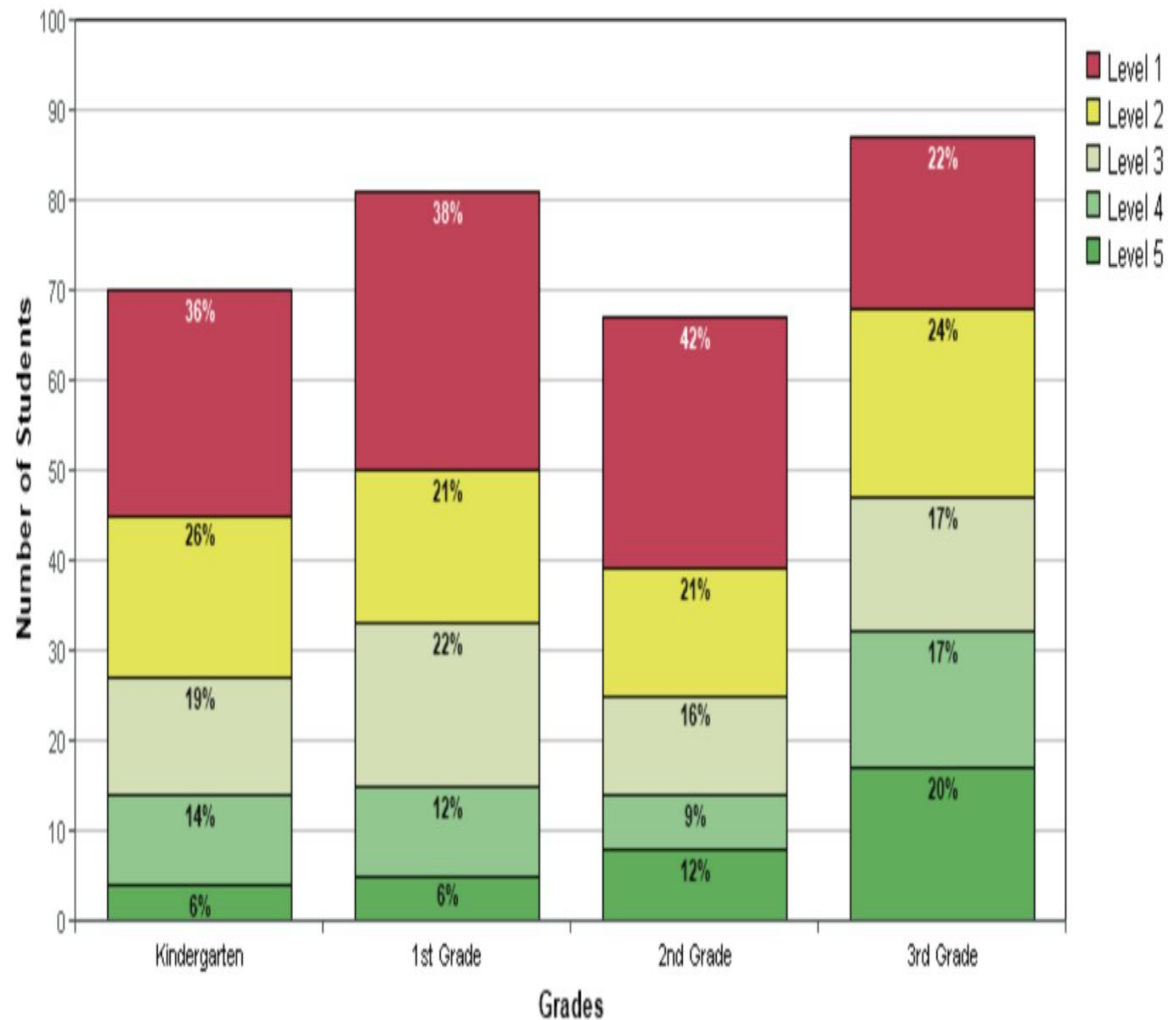


Total number of students who have been assessed using ISIP Math in May: 249

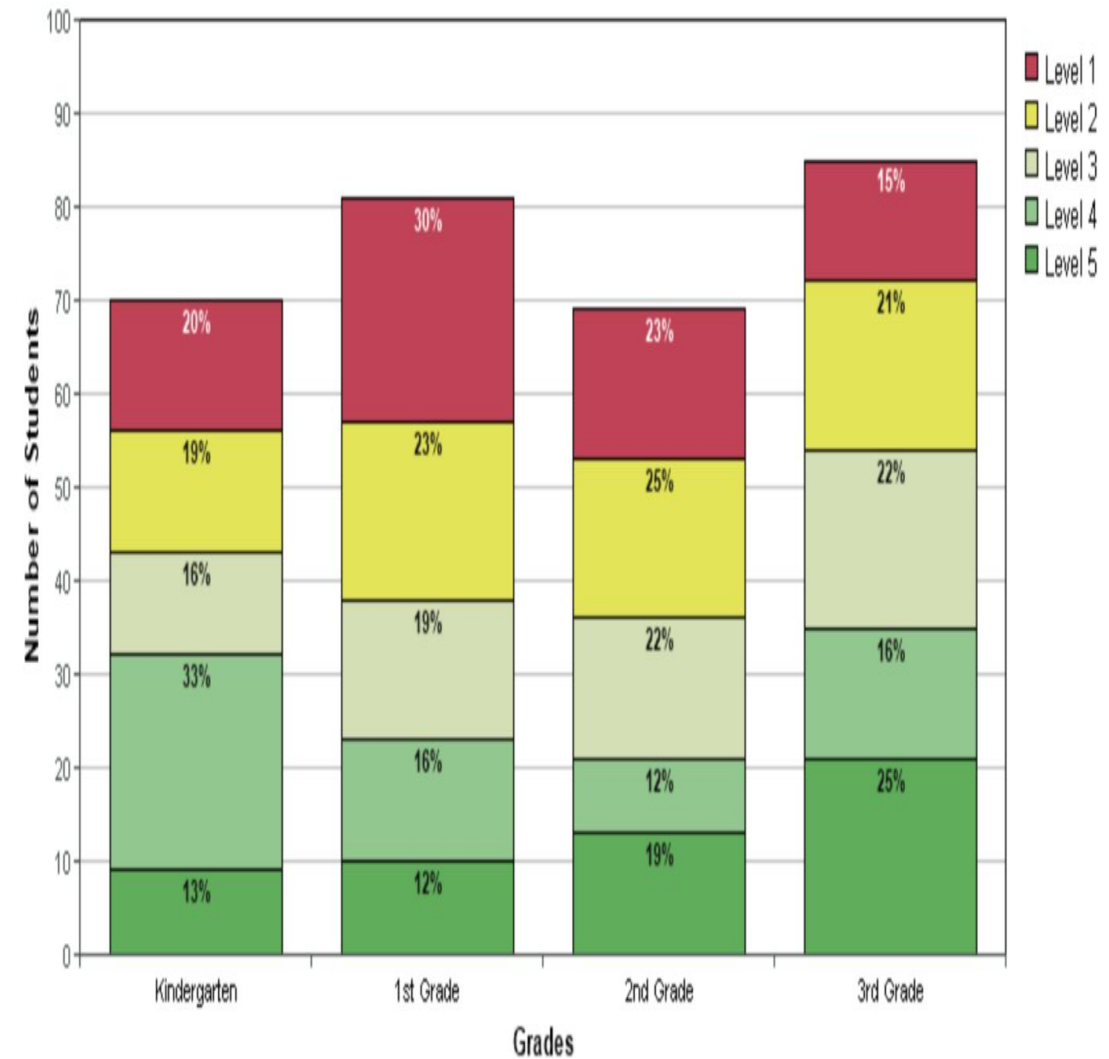


Lydia Rippey- Reading ISIP Data Comparison

All Grades - September 2024



All Grades - May 2025

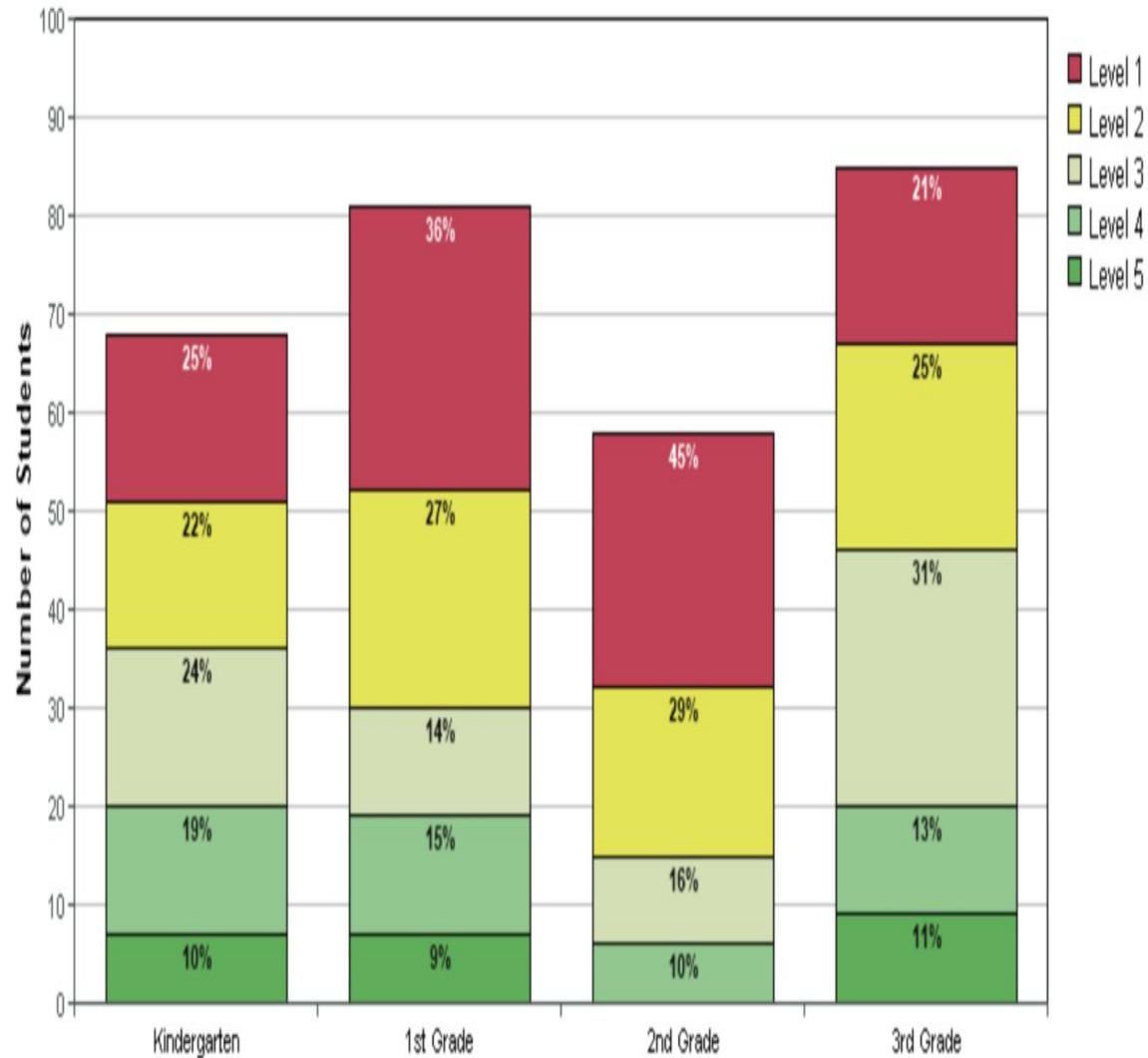


Lydia Rippey- Math ISIP Data Comparison

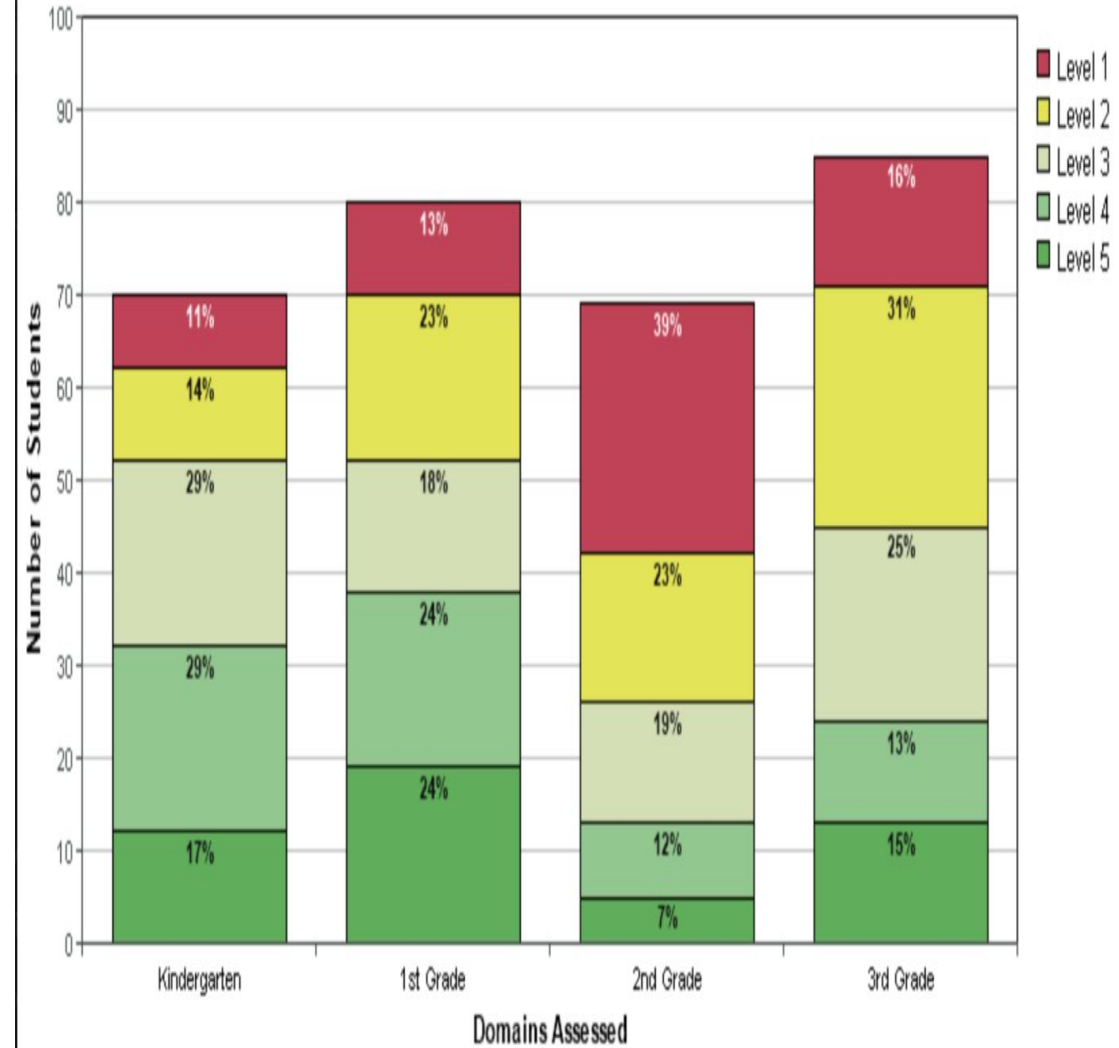
iStation Data



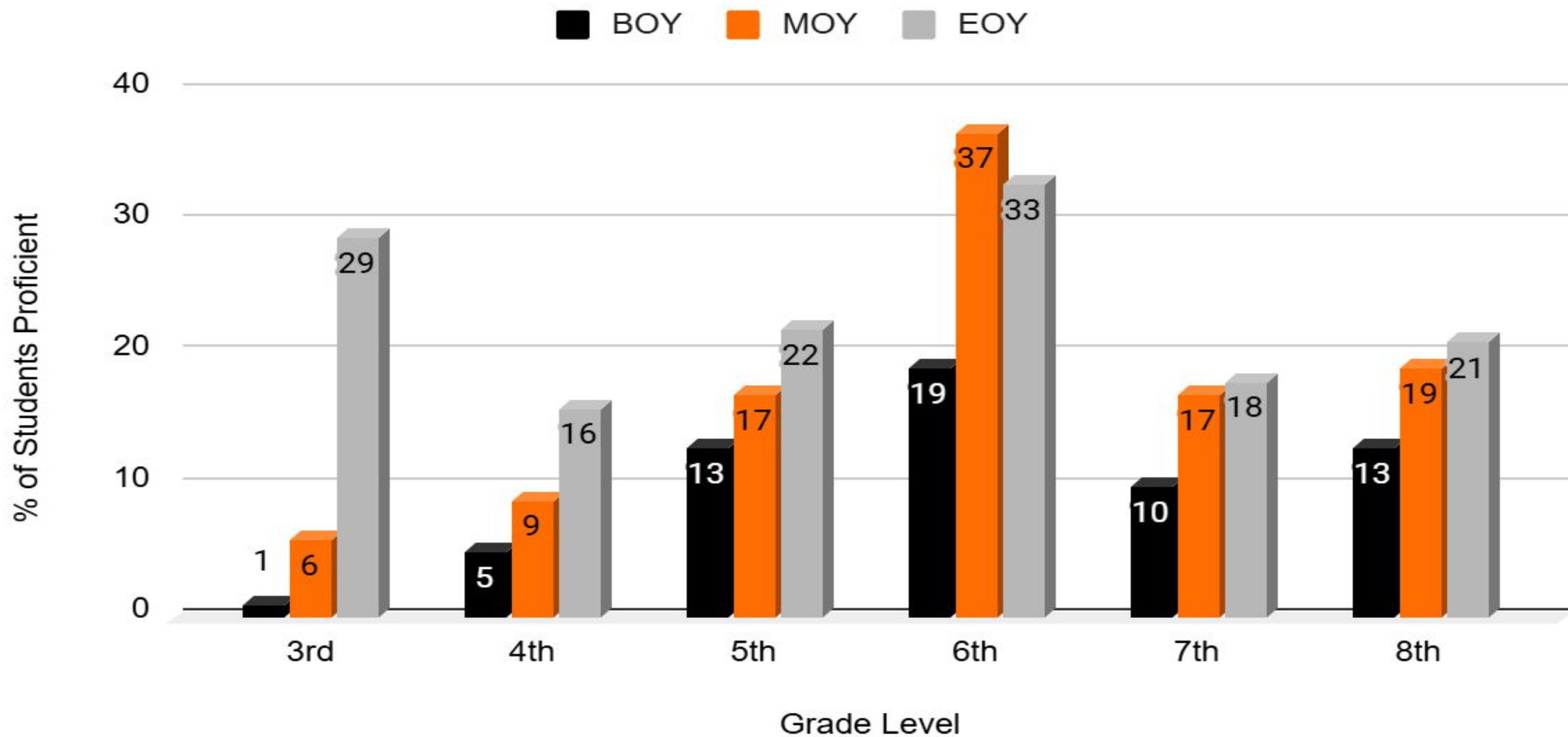
All Grades - September 2024



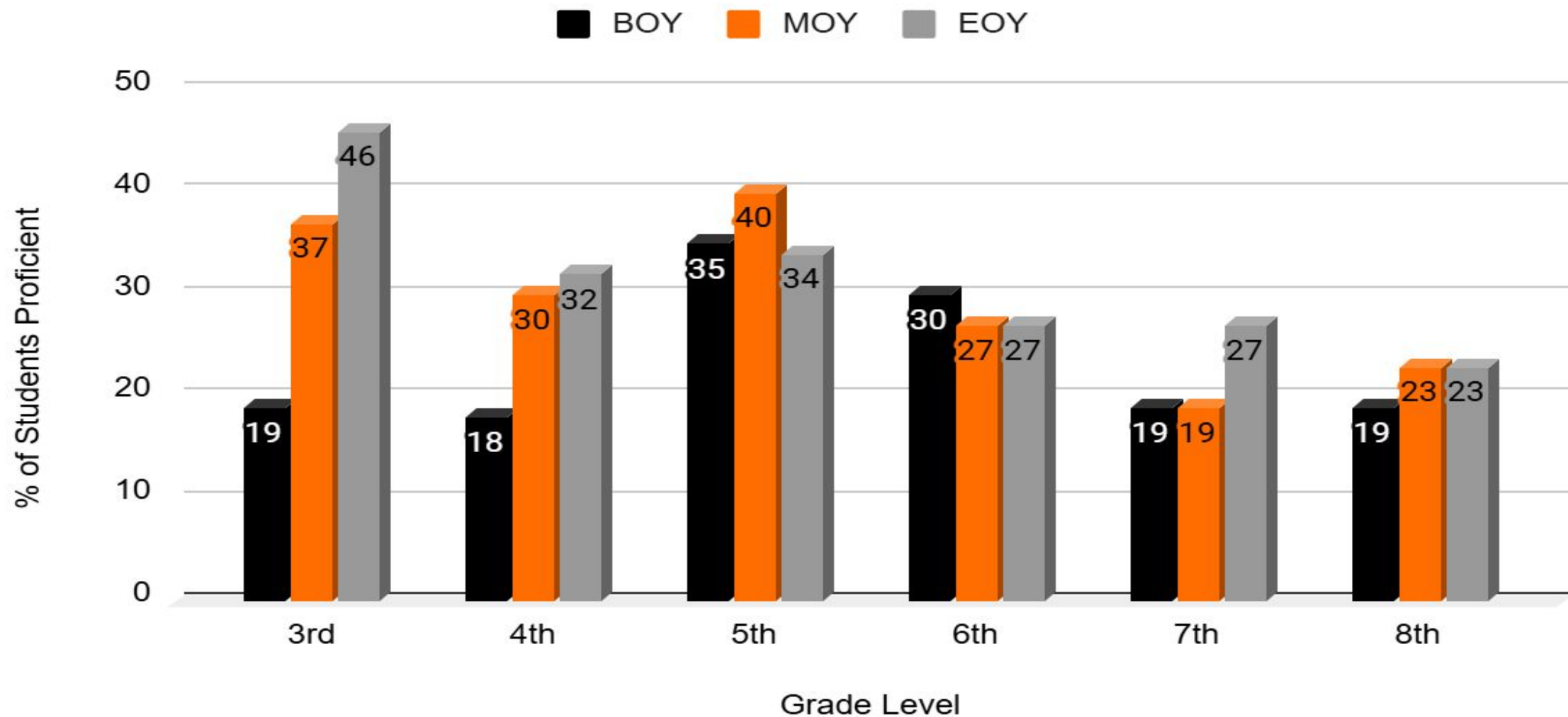
All Grades - May 2025



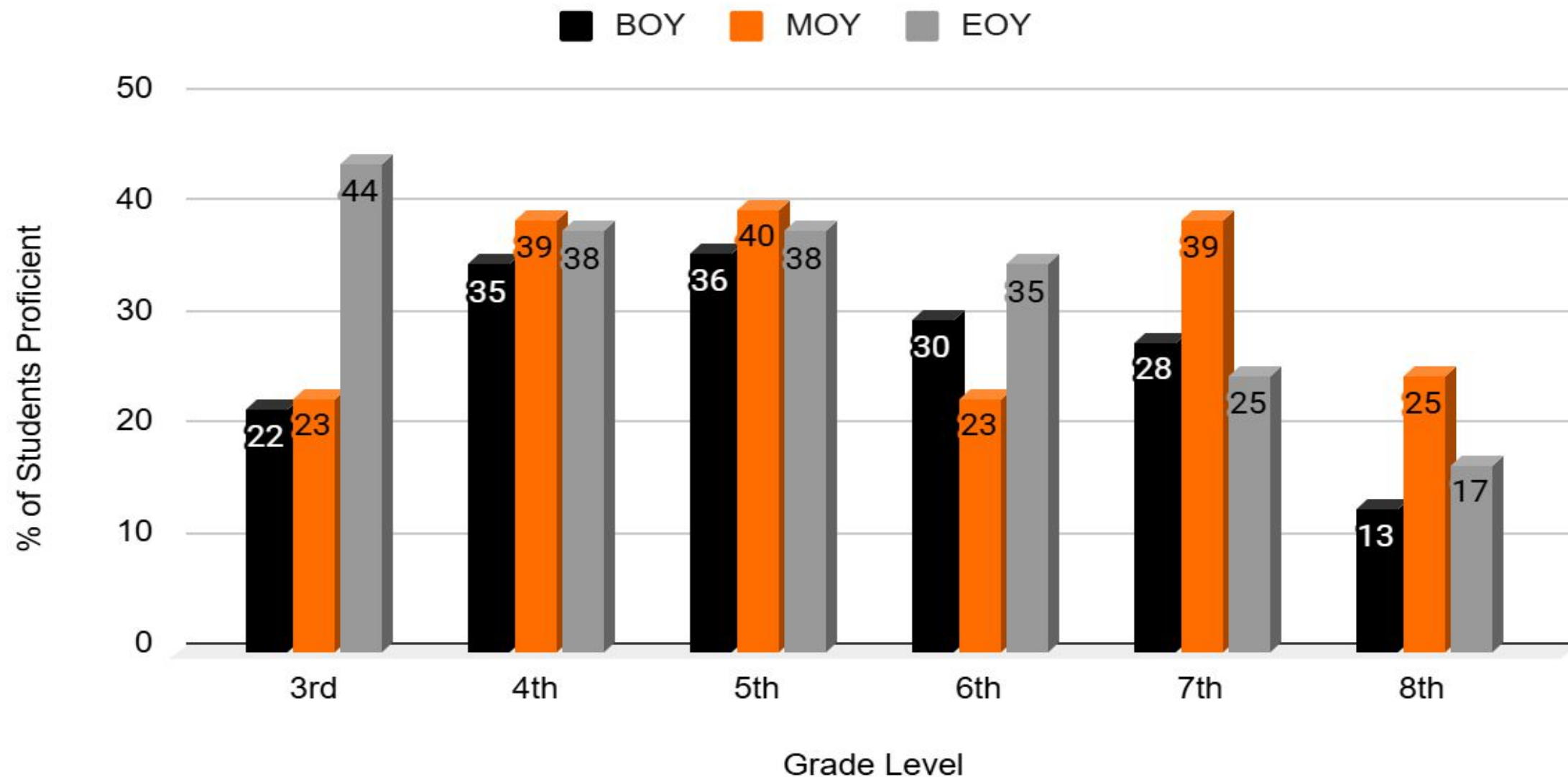
Math- iMSSA Data



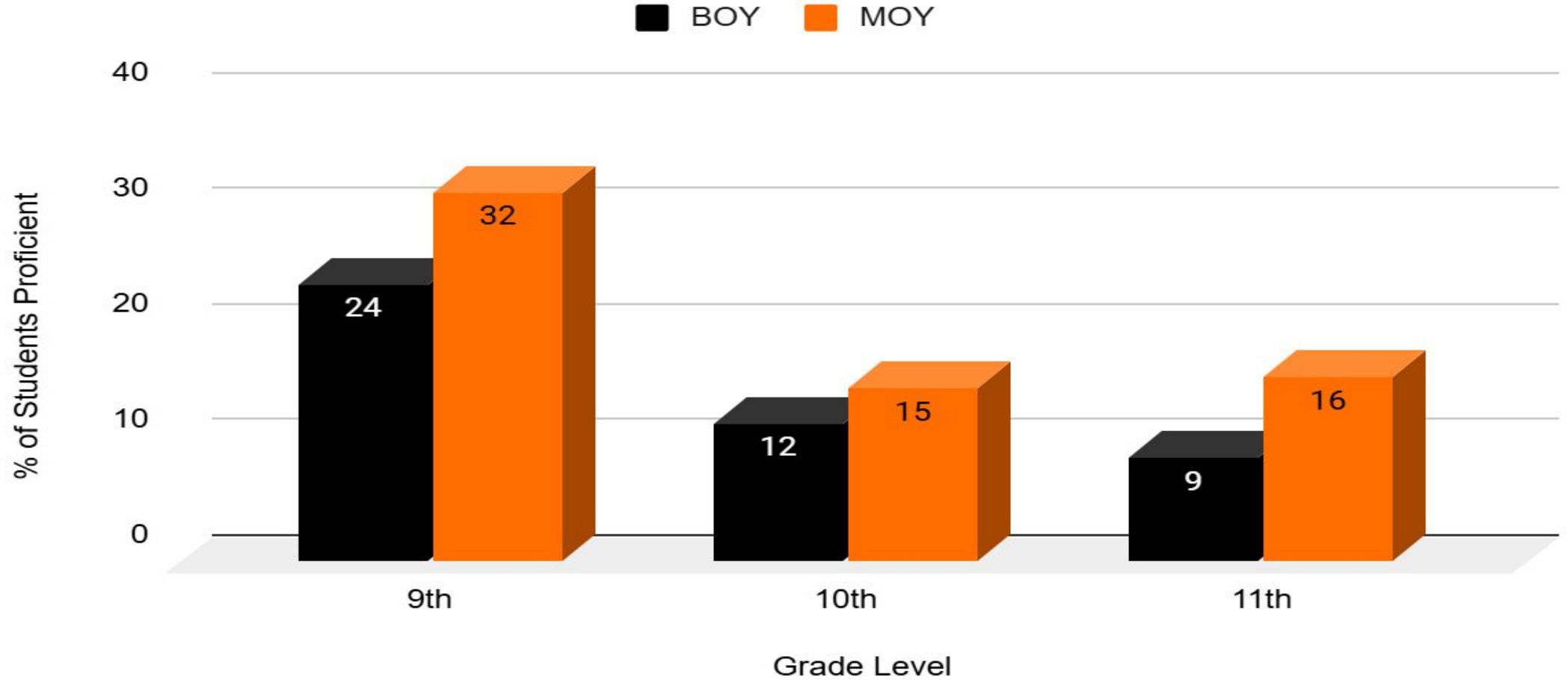
Reading-iMSSA Data



Language Usage- iMSSA Data



ELA/Math Combined- PSAT/SAT Data



Note: 11th graders did not take the PSAT at the end of the year due to take the SAT.



Thank You
