

Status of Bond Projects
2/11/14 Governing Board Meeting

President Zibrat, Board Members, Mr. Nelson,
Current Project Update:

I. INSTRUCTIONAL SPACE / PORTABLE REPLACEMENT

A. Rio Vista Elementary Classroom and Administration Addition:

Construction is 98% complete.

The new classroom building is complete, occupied, and in use.

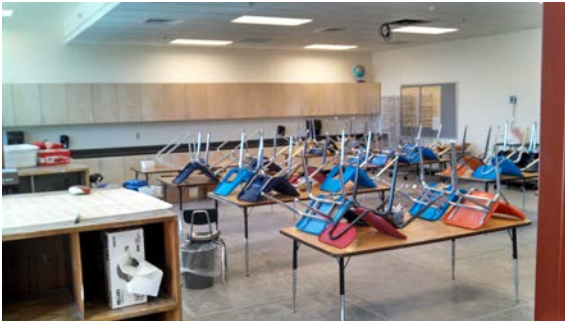
Phase 3 of the project, renovation of classrooms in the west wing into intervention rooms and installation of a shade canopy where the old west portable was is in process.



Exterior Entry Elevation



New Music Room



New Art Room



1 of 4 New Typical Classrooms



West Wing Demolition for
Intervention Room(s) Remodel



West Wing Intervention Room(s) Remodel



Area Where West Portable Use To Be
(removed during winter break)



Foundation Prep for Shade Canopy

The Rio Vista project is approximately four weeks ahead of schedule and under budget.

B. Cross Middle School Addition / Remodel:

Construction is 26% complete.

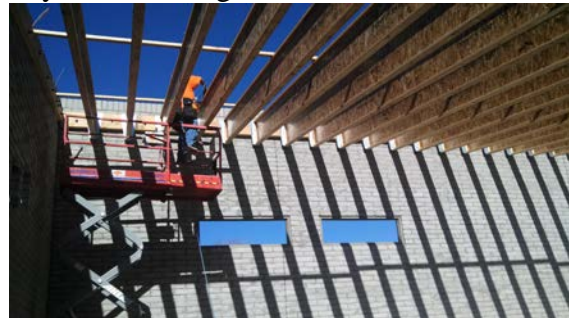
The auxiliary gym exterior walls, roofing, framing, and MP&E (mechanical, plumbing, and electrical) are complete. Insulation and drywall installation are in process.

In the 500 wing, drywall is complete and carpet and ceiling tile are being installed.

Inner campus underground re-cabling infrastructure - conduit and vaults - were installed during winter break to avoid occupied campus activities and for student safety. The 100 and 200 wings have been re-cabled as night work and the 400 wing is currently being re-cabled as night work.

Restroom renovations are complete in the 200 wing, are in process in the 500 wing, and continue to progress across campus during the spring semester.

Campus security fence installation has started by the 500 wing.



Auxiliary Gym Addition Roof Framing



Auxiliary Gym Insulation and Drywall



Auxiliary Gym Connection Canopy
To Existing Gym



500 Wing Drywall Installation



500 Wing Ready for Carpet and Ceiling Tile



Campus Re-cabling Underground Conduit and Vault Installation



Night Crew Classroom Cabling



Completed 200 Wing Restrooms



500 Wing Restroom Renovation in Process



Campus Security Fence Installation Has Started

The Cross project is on schedule and on budget.

C. Harelson Elementary School Addition / Remodel:

Construction is 24% complete.

The new classroom building foundation, underground, and exterior CMU walls are complete. Roof trusses and roof framing are in process.

Excavation of the “Fun House” addition is complete.

Inner campus underground re-cabling infrastructure - conduit and vaults - were installed during winter break to avoid occupied campus activities and for student safety.

Restroom renovations are complete in the “B” Building, are in process in the “D” Building, and will be progressing across campus during the spring semester.



New Classroom Foundation



New Classroom Exterior CMU Walls



Campus Re-cabling Underground Conduit and Vault Installation



B Building Completed Restrooms



D Bldg. Restroom Renovation (setting tile)

The Harelson Project is on schedule and on budget.

D. Wetmore Professional Development Building:

Programming of this project continues with the architect of record and the CM@R contractor. Schematic design drawings are complete and design development drawings have been started.

E. Donaldson Elementary School Addition / Remodel:

An architect has been accepted by the governing board and a general contractor is being procured.

F. Mesa Verde Elementary School Addition / Remodel:

An architect has been accepted by the Governing Board and a general contractor is being procured.

II. HEALTH, SAFETY, & SECURITY

A. Wilson K-8 Renovation:

An architect has been accepted by the Governing Board and design programming has started with the site staff.