

NKN MIDDLE SCHOOL NEWSLETTER

FEBRUARY 12, 2021

DEAR FAMILIES,

We are excited to be putting our final touches on our Hybrid Model of Instruction that begins on March 15. In order to complete these preparations, we need your help! Embedded in this Newsletter is a Parent Survey. In the survey, I share the two options available for students and families beginning March 15: Hybrid Model or CDL only model. Please take a few minutes to fill out the survey.

We currently have Limited In Person opportunities for students during our final weeks of Comprehensive Distance Learning. There are two times available: 9:00-11:00 and 2:00-4:00. Transportation is available for both sessions, however for the morning session, transportation is only available for students who live in Rockaway, Garibaldi or Bay City. Transportation for the 2:00-4:00 session is available for any student in the district.

Highlights of each session are as follows:

9:00-11:00 - Students who attend this session attend their classes virtually and have access to teachers during transitions between classes.

2:00-4:00 - Students who attend this session attend the last two periods virtually and have access to teachers from 3:10-4:00.

If you feel your student would benefit from attending either Limited In Person sessions, please call the office.

In the next few weeks, as more information is finalized, I will be updating all of you on the Hybrid Schedule, what cohort your student is in, and what school will look like in our Hybrid Model. Thank you for your patience and support as we adjust to these ever-changing circumstances.

Sincerely,
Lori Dilbeck, Principal

PARENT SURVEY

Please fill out this survey! The information will help us plan for our Hybrid Model of Instruction beginning March 15.

Survey to choose Online or Hybrid Onsite for March 15

Hello Neah-Kah-Nie Middle School Families!

We need you to fill out this survey to help us plan for our March 15th transition to either a Hybrid or Online option for families and students.

These will be our two instructional options beginning March 15:

1. We will offer an Onsite Hybrid Model with students physically coming to school two days per week (and then attending virtually two days per week) in an A/B schedule. Students who are in the A group will attend school on-site on Mondays and Wednesdays from 8:45-3:45. Students who are in the B group will attend school on-site on Tuesdays and Thursdays from 8:45-3:45. On the days these



PRINCIPAL CHAT SESSION

WHEN

THURSDAY, FEB. 18TH, 3-3:30PM

WHERE

THIS IS AN ONLINE EVENT.

MORE INFORMATION

Please join me Thursdays from 3:00-3:30 for my weekly Principal's Chat Session. I am available to answer questions about our Hybrid Model of Instruction which begins on March 15 and/or any questions you might have about Comprehensive Distance Learning with Limited In Person.

Zoom Link: <https://us02web.zoom.us/j/82664848284?pwd=eFF0M3FnQzE2U3JldDlicFprQkMrQT09>

ATTENDANCE

We cannot emphasize the importance of regular attendance, whether it is on-line or in person. Consistent attendance is key to your child's academic success. Please make sure to call the office if your child is going to be absent.

CONTACT INFORMATION

Please make sure to contact the office should you have a change of phone number, physical/ mailing address and/or email address. Since so much of our correspondence is via email these days, it is crucial that we have your current email address on file so that you will not miss out on any important information.

Also, please make sure we have updated emergency contacts on file at the office. If in doubt, you can always call the office at 503.355.2990 to make sure the information we have for emergency contacts is correct.

IMMUNIZATIONS

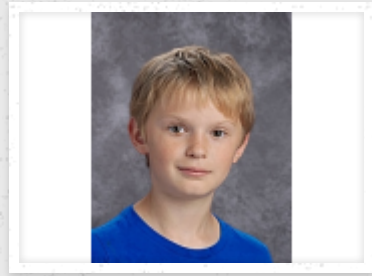
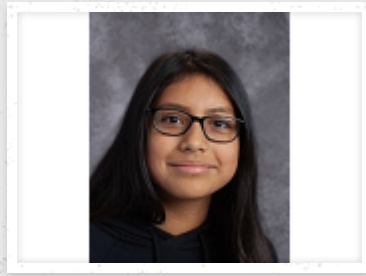
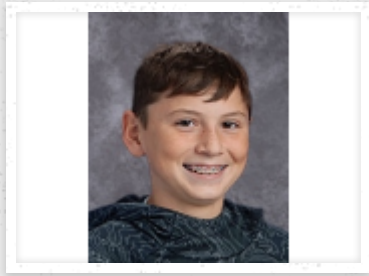
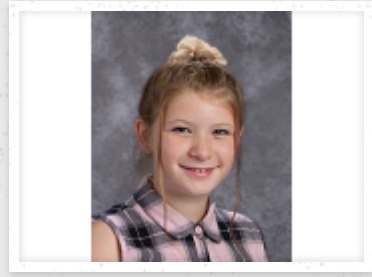
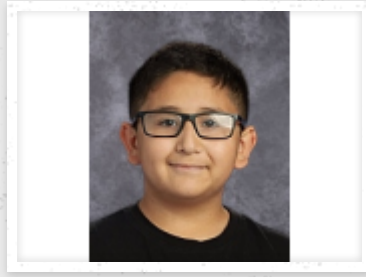
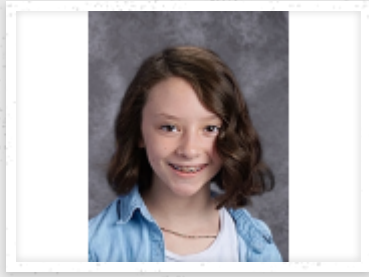
Reminder that February 17th is exclusion day. Oregon law requires that each student must have on file a record of either immunization, medical exemption or non-medical exemption. At this writing, any LIP student who does not have this information on file will not be able to attend class on campus, effective 2/17/21. Students that will be attending the hybrid model must have this information on file prior to 3/15/21 or they will not be permitted on campus. Letters from the school as well as the health department have been sent to anyone that does not have this on file. Please call the office at 503.355.2990 should you have any questions.

JANUARY STUDENTS OF THE MONTH

CONGRATULATIONS! WELL DONE!

Top: Scarlet Inacio, 6th grade, David Haines, 6th grade, Annalise Moran, 7th grade.

Bottom: Jackson Welsh, 7th grade, Ashley Perez, 8th grade, Tateum Carter, 8th grade.



ATHLETIC OPPORTUNITIES BEGINNING AT THE MIDDLE SCHOOL FEBRUARY 22!

Flag Football and Cross Country will be starting up on February 22nd! Flag Football is open to 7th and 8th grade only. Cross Country is open to 6th, 7th, and 8th graders. Practice will be held Monday- Thursday, from 4:15-5:30pm. There will be no activity busses, so parents must arrange for transportation. All participants **MUST** have a current sports physical, medical insurance information and permission form on file at the office. Please call the office with any questions 503.355.2990.

IMPORTANT DATES TO REMEMBER

February 15 - No School - President's Day

March 10 - 11 - No School - Teacher In-Service to prepare for Hybrid

March 12 - No School - Grade Day

March 15 - Hybrid begins!

March 22-26- Spring Break



NEAH-KAH-NIE MIDDLE SCHOOL

Facebook @ourschool

Office Hours:

7:30-4:00 - Monday - Friday

25111 Hwy. 101 N, Rockaway ...

lorid@nknsd.org

(503)355-2990

nknsd.org

