



CAPITAL IMPROVEMENT

EP COUNTY

BOND

Note: All graphics, conceptual images, and project descriptions are subject to change.
Project costs and schedules are for planning and estimation purposes only and are subject to change.

Propositions A - E



A: Parks & Recreation

Ascarate Park, Neighborhood Parks,
Regional Trails, & Related Facilities
Total Project Cost: \$95,615,000

B Office of Medical Examiner

New Medical Examiner Office
Total Project Cost: \$26,700,000

C Courthouse, Subcourthouses, & Related Annexes

Corbin Sambrano, Ysleta, Far East Montana
Total Project Cost: \$63,285,000

D County Coliseum

Masterplan Renovation of County
Coliseum & Adjacent Facilities
Total Project Cost: \$105,485,000

E Animal Shelter

New Animal Shelter
Total Project Cost: \$32,710,000

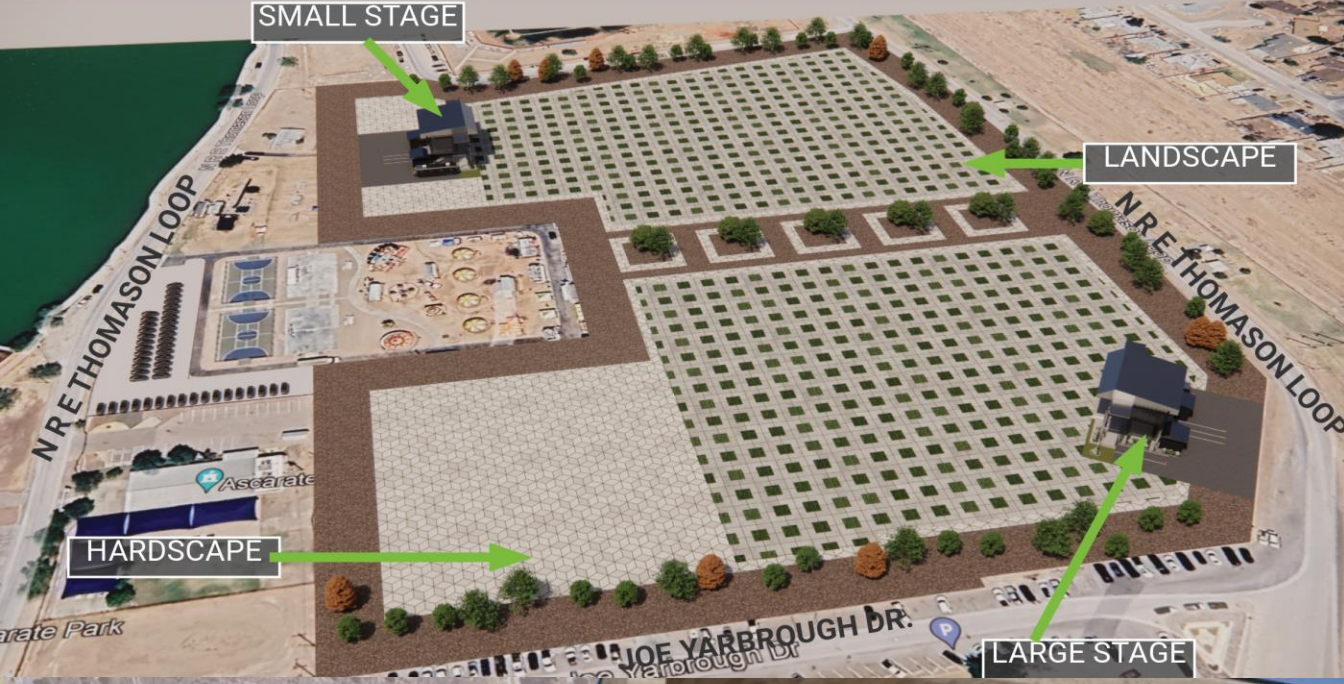
Total Amount of All Propositions: \$323,795,000

Would Raise County Debt Tax Rate By \$0.03
2024 Average Home Value: \$200,956
\$5.02 per month | \$60.29 annually

Proposition A: Parks & Recreation

\$95,615,000

19 Projects

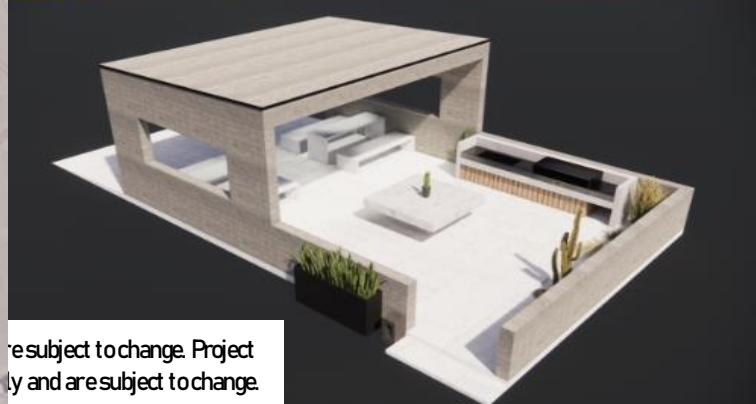
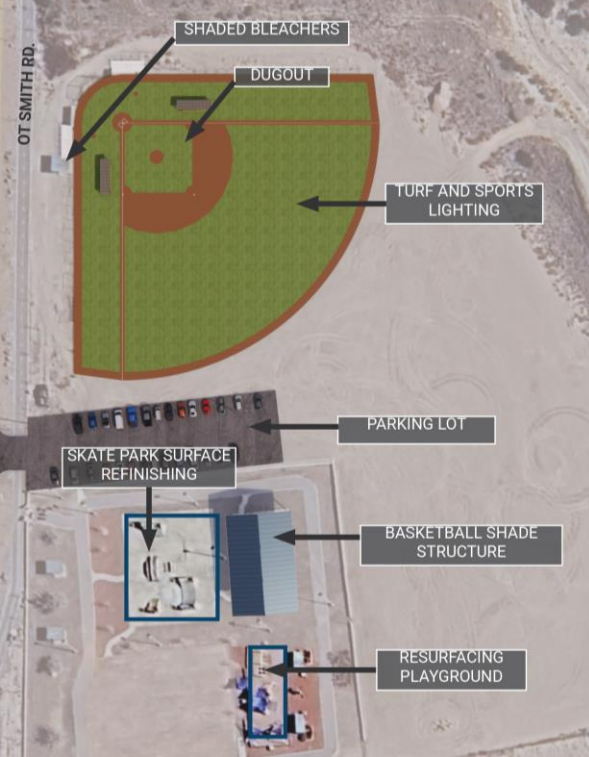


Project A2

Ascarate Regional Park Shelter Modernization

- Proposed Project Details
 - Modernize ~80 Existing Shelters
 - Include Shaded Canopy
 - Include BBQ Grills & Trash

- Estimated Project Schedule
 - Design Start: 9/2025
 - Construction Start: 5/2028
 - Construction End: 11/2030



are subject to change. Project details and are subject to change.

Proposition B

Office of Medical Examiner

\$26,700,000

Project BI

Office of Medical Examiner

- Proposed Project Details
 - Acquisition of Land
 - Design, Construct and Equip a New Office of Medical Examiner

- Estimated Project Schedule
 - Construction Start: 1/2027
 - Construction End: 7/2029



Note: All graphics, conceptual images, and project descriptions are subject to change. Project costs and schedules are for planning and estimation purposes only and are subject to change.

Proposition C Courthouse, Subcourthouses & Related Annexes

\$63,285,000

3 Projects



Project C1
Corbin Sambrano
-Mental Health Services
-Community Multipurpose Rooms



Project C2
Ysleta Annex Building West
-Senior Nutrition Commercial Kitchen

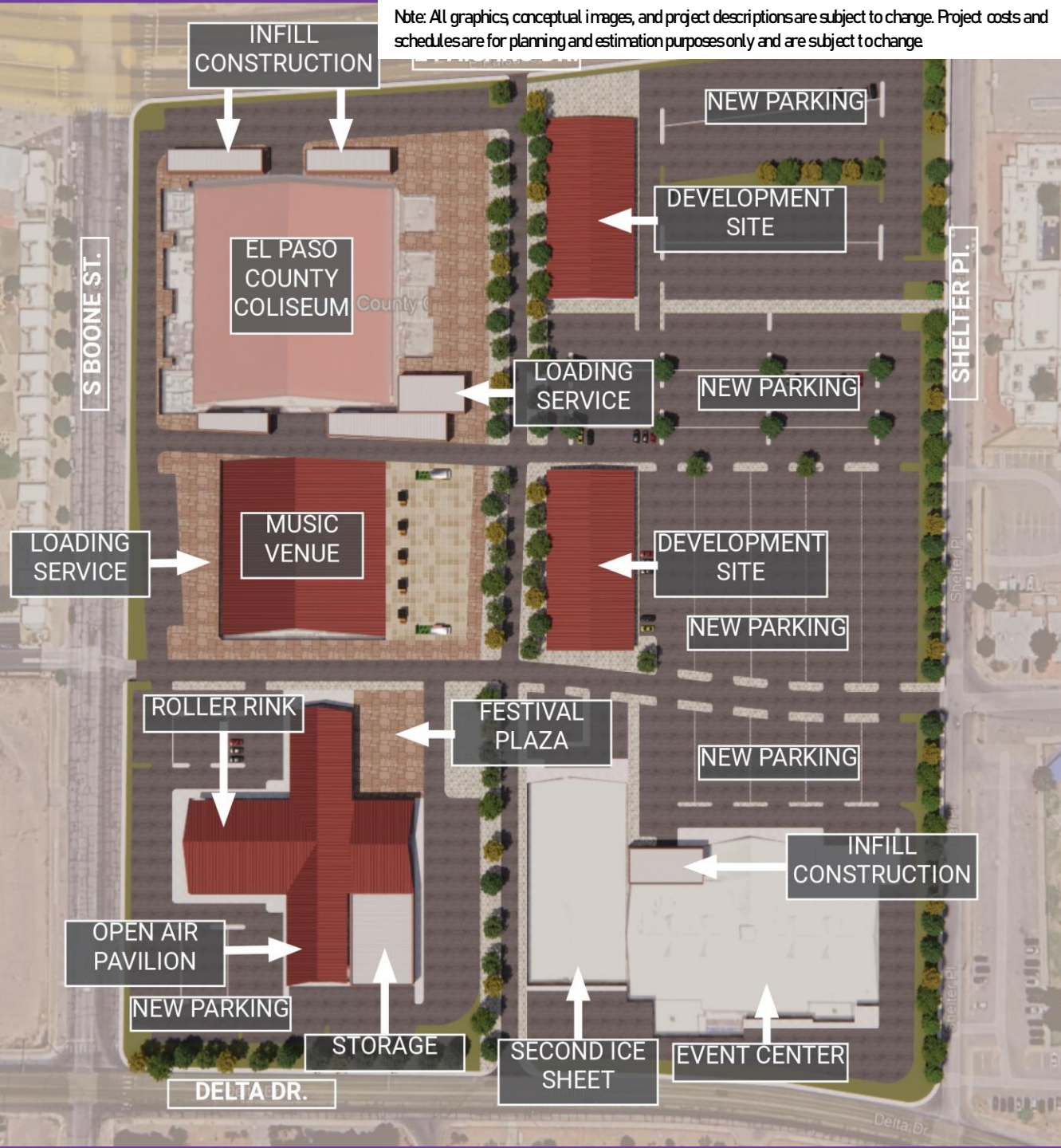
Project C3
Far East Montana Annex
-Serve Montana Vista & Far East El Paso

Note: All graphics, conceptual images, and project descriptions are subject to change. Project costs and schedules are for planning and estimation purposes only and are subject to change.

Proposition D

County Coliseum Renovation

\$105,485,000



Project D1 County Coliseum Renovation

- Proposed Project Details
 - HVAC & Maintenance Renovations to Coliseum, Improve Seating Options & ADA Accessibility
 - Renovate Existing Buildings into Music Venue & Open-Air Pavilion
 - Parking Lot & Pedestrian Walkway
 - Illumination & Landscaping

- Estimated Project Schedule
 - Design Start: 5/2025
 - Construction Start: 1/2028
 - Construction End: 7/2030

Proposition E

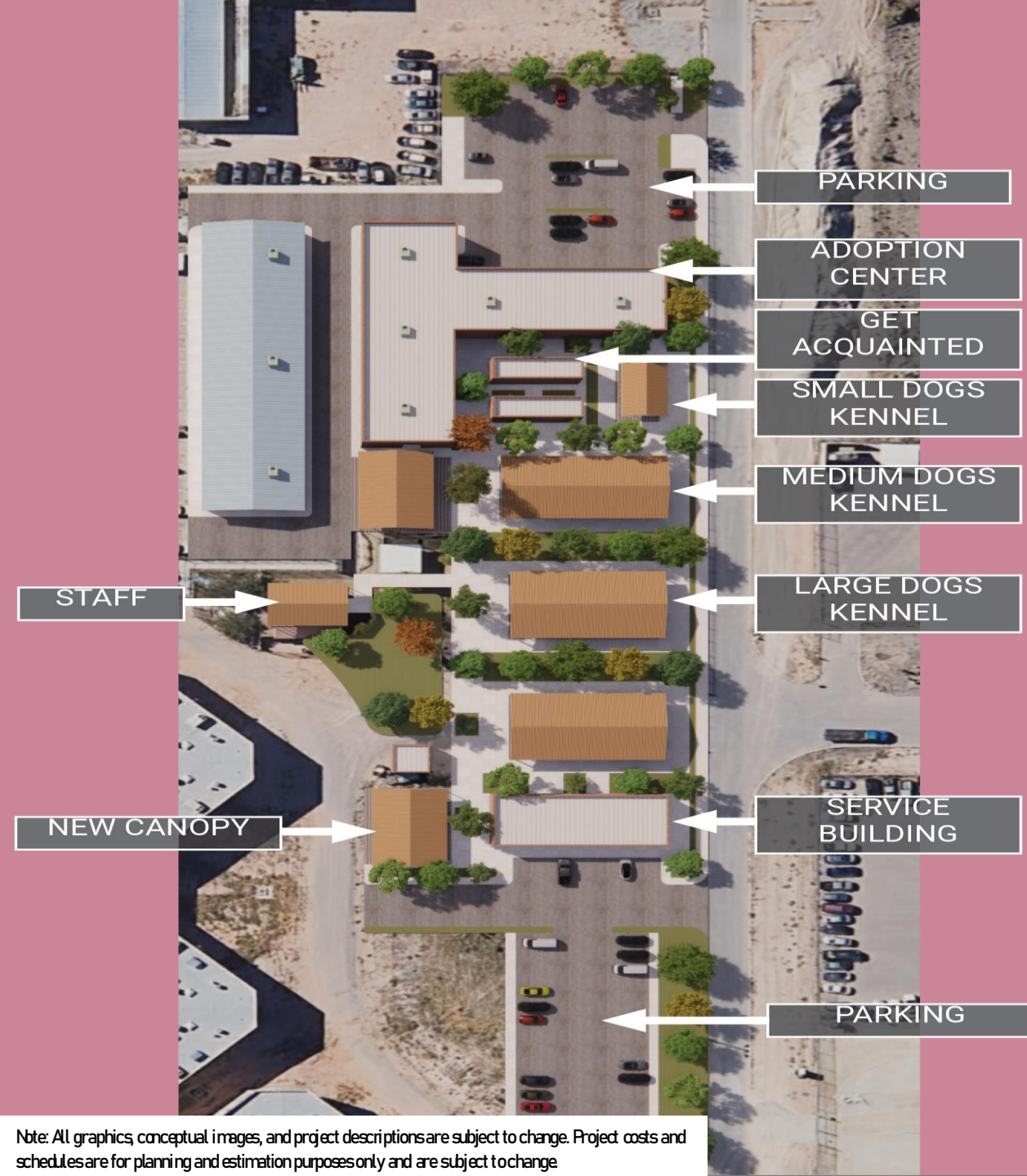
New Animal Shelter

\$32,710,000

Project E

County Animal Shelter

- Proposed Project Details
 - Provide Adoptions & Shelter for Estimated 300-400 Stray Animals
 - Low to No Cost Vaccinations
 - Spay & Neuter Surgeries
 - Offer Job Skill Training to County Jail Inmates
- Estimated Project Schedule
 - Design Start: 5/2025
 - Construction Start: 1/2028
 - Construction End: 7/2030



Note: All graphics, conceptual images, and project descriptions are subject to change. Project costs and schedules are for planning and estimation purposes only and are subject to change.

Proposed Project Timelines

First Issuance

Spring 2025

Approximately \$125M

Project Development Begins

Second Issuance

Spring 2027

Approximately \$198.8M

Project Construction Begins

Debt Service Over 20 Years



Capital Improvement Bond – Total Debt Service for \$323.8M Bond

Total Debt Service: \$486,449,750 (P&I)

Interest Rate: 5 Percent (Current Market Rate + 0.5 Percent)

Interest Paid: \$183,339,750

Percentage of Original Project Cost: Approximately 56.6 Percent

Home Mortgage Example – Total Debt Service for \$200,000 Home

Total Debt Service: \$330,822.68 (P&I)

Interest Rate: 5.78 Percent (TX Average as 9/6/24)

Interest Paid: \$137,822.68

Percentage of Original Project Cost: Approximately 71.3 Percent

El Paso County Proposition A:

The issuance of bonds in an amount not to exceed \$95,615,000 for the County's parks and recreational spaces and the levy of taxes sufficient to pay the principal of and interest on the bonds.

El Paso County Proposition B

The issuance of bonds in an amount not to exceed \$26,700,000 for facilities for the County's Office of the Medical Examiner and the levy of taxes sufficient to pay the principal of and interest on the bonds.

El Paso County Proposition C



The issuance of bonds in an amount not to exceed \$63,285,000 for the County's courthouse, sub courthouses, and related annexes and the levy of taxes sufficient to pay the principal of and interest on the bonds.

El Paso County Proposition D

The issuance of bonds in an amount not to exceed \$105,485,000 for the County's Coliseum and adjacent facilities and the levy of taxes sufficient to pay the principal of and interest on the bonds.

El Paso County Proposition E



The issuance of bonds in an amount not to exceed \$32,710,000 for the County's Animal Shelter and levy of taxes sufficient to pay the principal of and interest on the bonds.

Voting For or Against

Voting "For" a Proposition Means Authorizing the County to Start the Project(s).

Voting "Against" a Proposition Means Not Authorizing the County to Start the Project(s).

Contact Information & Website



Strategic Capital Development Department

CapitalPlanning@EPCounty.com

Visit Our Website:

capital.epcounty.com





Voter Registration Ends Monday, October 7, 2024

Last Day to Request Mail in Ballot is October 25, 2024

2024 General Election Voting Dates:

Early Voting Begins Monday, October 21, 2024

Early Voting Ends Friday, November 1, 2024

Election Day is Tuesday, November 5, 2024

More Information at www.epcountyyvotes.com