



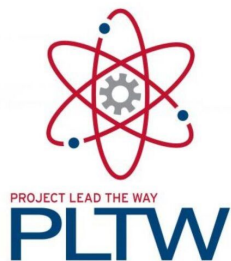
Bowie STEM Create New Update:

1. The year in review
2. Vision for next year
3. Bowie STEM Academy



Site Visits!

- Project Based Instruction
- LEGO Education
- Project Lead the Way
- Youth Engineering Solutions





Instructional Vision

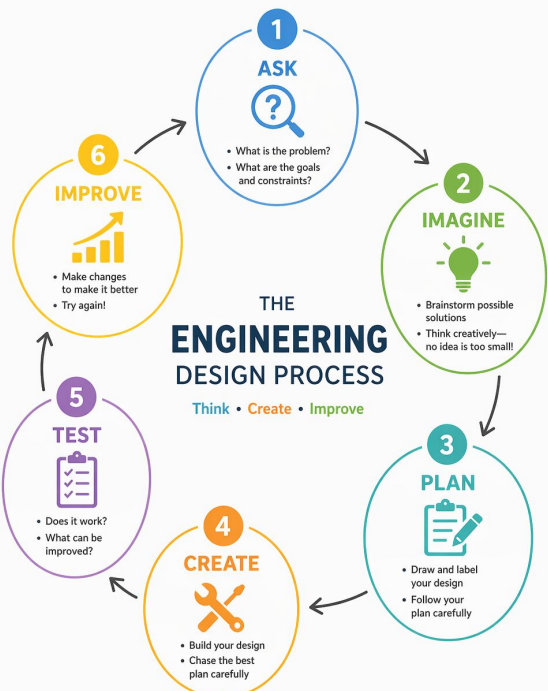
At Bowie STEM Academy, instruction is intentionally designed so that every student:

- masters rigorous, grade-level academic content;
- develops the STEM fluency skills needed for long-term success;
- applies learning through the Engineering Design Process and project-based experiences; and
- learns in a supportive, high-expectations classroom environment.



Learning Framework

- Engineering Design Process
- 1st Teach, Best Teach
 - Gold Standard Modeling
 - Cold Call
 - Active Observations



REMEMBER:

Engineers don't give up—failure helps us learn!

Design. Build. Test. Improve. Repeat.



Early STEM Implementation

School-wide STEM Design Challenge (March 6th)

- Penny Boats

K-2 STEM Unit Partnership with Abilene Zoo

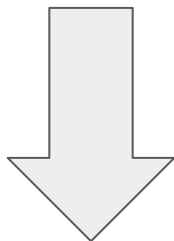
- 9-week unit
- Parent showcase May 7th
- Celebration Assembly May 8th





Name Change

Bowie Elementary School



Bowie STEM Academy



Next steps

- Consider administrative recommendation of name change
- June STEM Campus Implementation Board Update