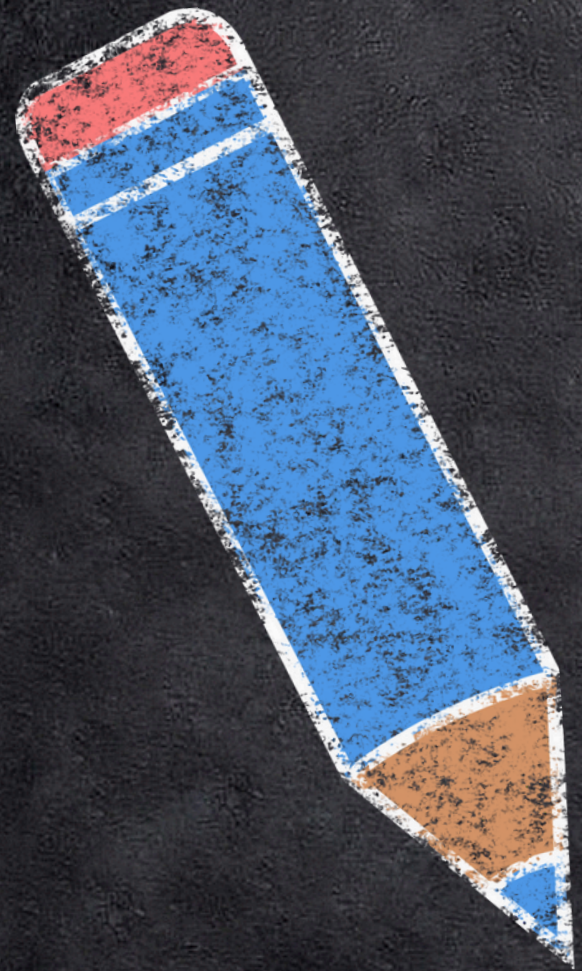


EARLY LEARNING PLAN



August 2025 Board Meeting

AshLee Nelson & Jamie Kent



2024-25 EARLY LEARNING PLAN

Early Mathematics Goal

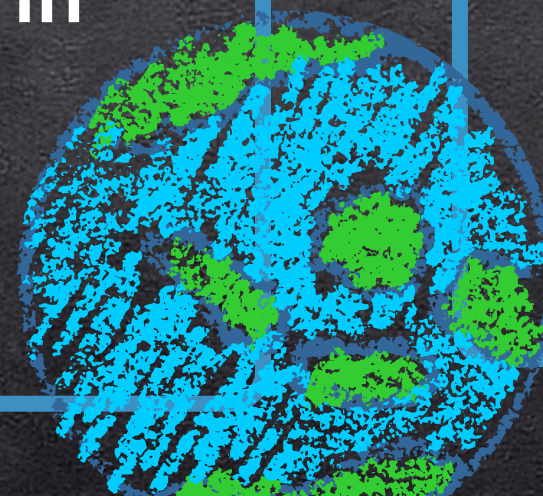
By May 30, 2025, Box Elder School District will increase the percentage of 1st grade students performing at or above benchmark on the Advanced Quantity Discrimination (AQD) measure by 10% from BOY to EOY by teaching strategies to improve fluency and focusing on number sense understanding to increase number identification fluency, resulting in improved AQD.

BOY Data

56%

EOY Data

66%



2024-25 EARLY LEARNING PLAN

Early Literacy Goal

By May 30, 2025, Box Elder School District will increase the percentage of 2nd grade students reading above benchmark in oral reading accuracy and fluency by 5% from BOY to EOY by increasing opportunities to read, exposing students to appropriate grade level text, and providing teachers with feedback on LETRS observations to increase the number of students reading at or above grade level.

BOY Data

34%

EOY Data

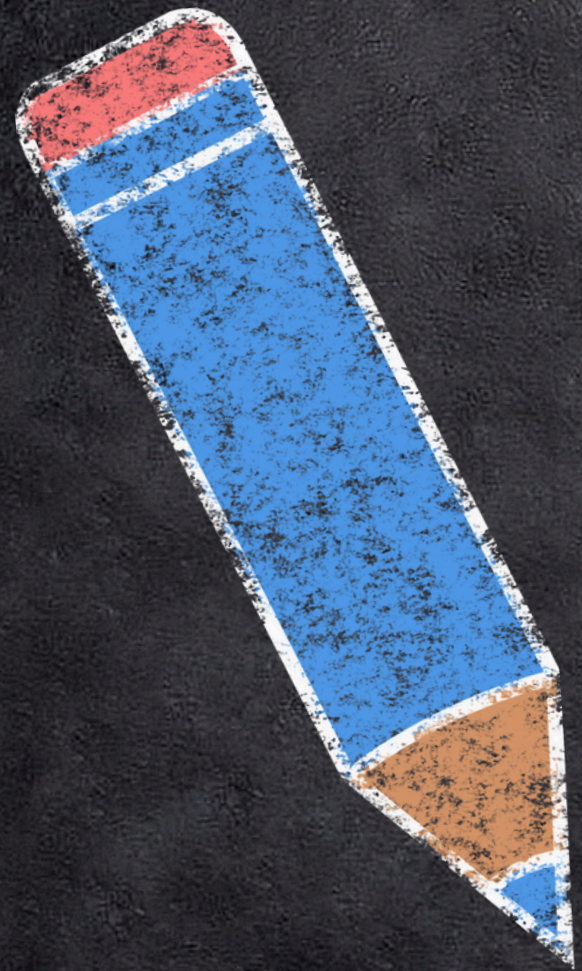
37%



Early Learning Plan Changes

2025-26

- 2 math goals instead of one math and one literacy goal
- Plan just needs to be presented to the board, not approved



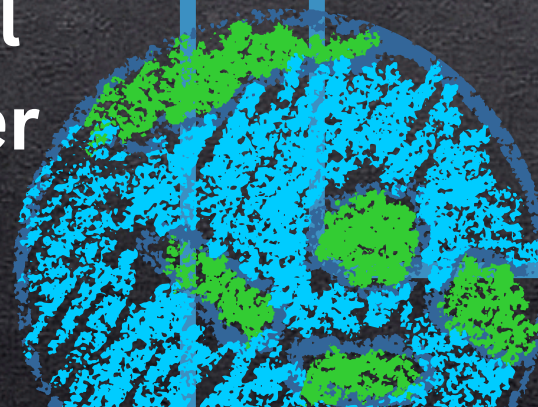


2025-26 GOALS

2025-26 EARLY LEARNING PLAN

Early Mathematics Goal

By May 28, 2026, Box Elder School District will increase the percentage of 1st grade students scoring at or above benchmark in computation by 25% from BOY to EOY by demonstrating an increased proficiency in subitizing skills, and applying multiple strategies for addition and subtraction that extend beyond rote memorization. Specifically, students will be able to accurately recognize and quickly identify small quantities (subitizing) and use visual and conceptual strategies, such as number bonds, counting on, and decomposing numbers, to solve addition problems.



24-25 Data

19% Increase

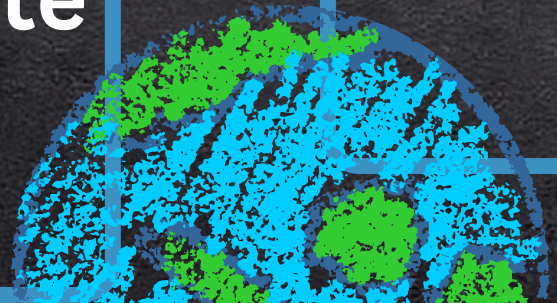

25-26 Data

2025-26 EARLY LEARNING PLAN



Early Mathematics Goal

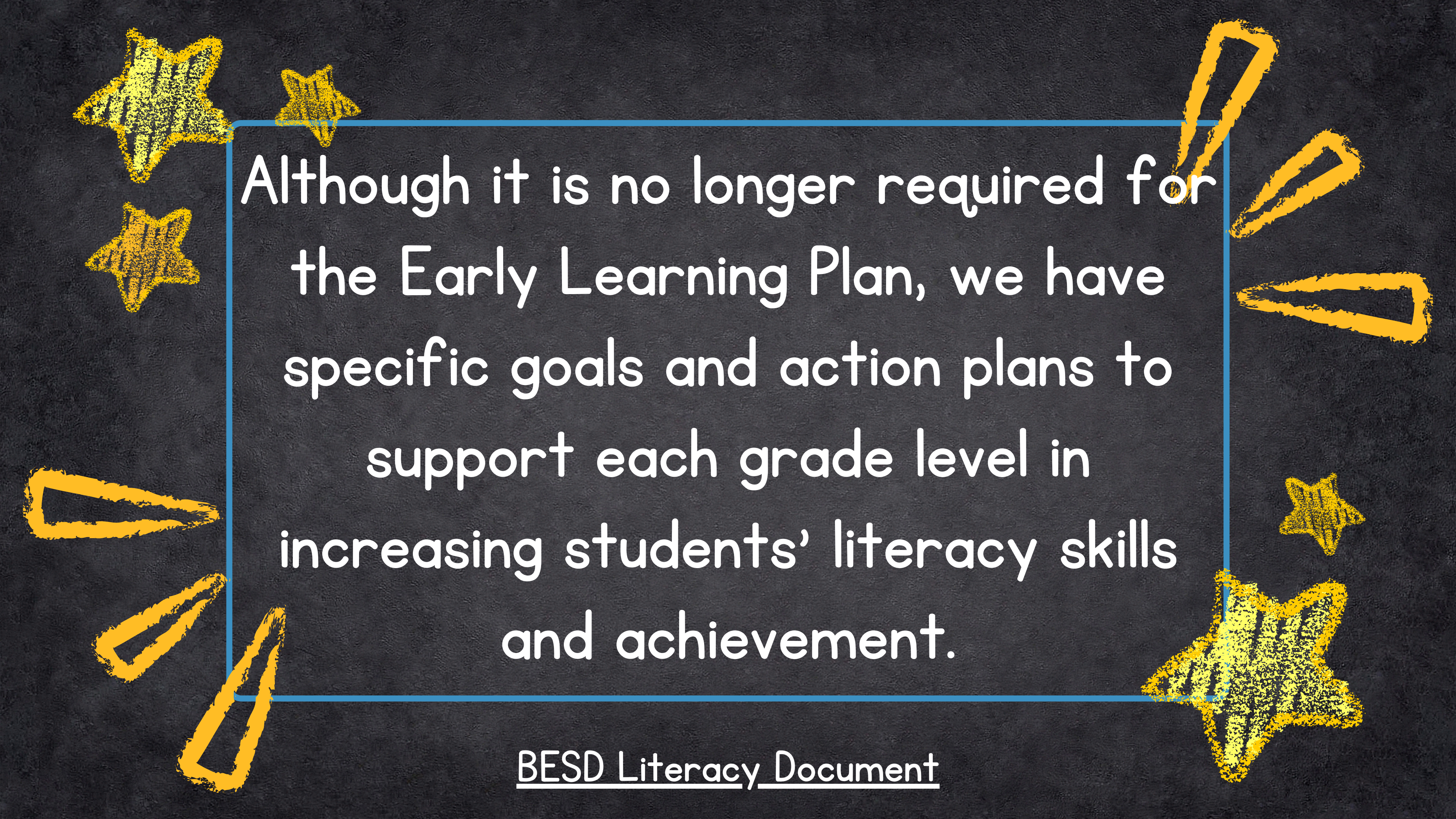
By May 28, 2026, Box Elder School District will increase the percentage of 3rd grade students scoring at or above benchmark in computation by 10% from BOY to EOY by demonstrating an increased proficiency in subitizing skills, and applying multiple strategies for addition, subtraction, multiplication, and division that extend beyond rote memorization.



24-25 Data

5% increase

25-26 Data

The background is a dark, textured surface. It is decorated with several yellow stars of varying sizes and orientations, some with a grainy, hand-drawn appearance. There are also several yellow paper clips scattered around the central text box. A thin blue rectangular border frames the main text area.

Although it is no longer required for
the Early Learning Plan, we have
specific goals and action plans to
support each grade level in
increasing students' literacy skills
and achievement.

BESD Literacy Document



THANK
YOU

