

Overview of the *A–F Accountability*

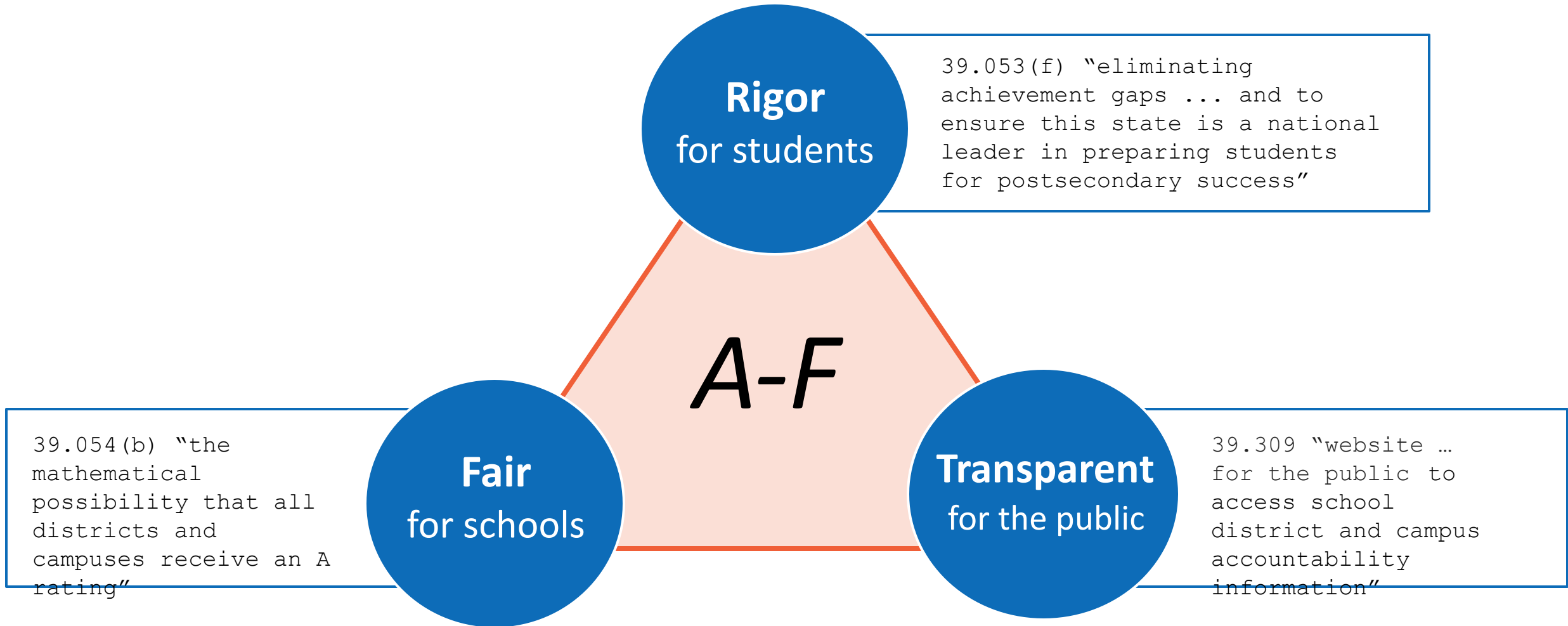
We believe that all students can learn and achieve at high levels.



39.053(f) ... In consultation with educators, parents, and business and industry representatives, as necessary, the commissioner shall establish and modify standards to **continuously improve student performance** to achieve the goals of **eliminating achievement gaps** based on race, ethnicity, and socioeconomic status and to ensure this state is a national leader in **preparing students for postsecondary success**.

Fostering a **culture that supports growth** and continuous improvement when this performance information is public is a difficult but **critical task for education leaders**.

Balancing multiple objectives



There are several key design commitments built into *A–F* to help ensure it works as an effective continuous improvement tool while accurately recognizing performance:

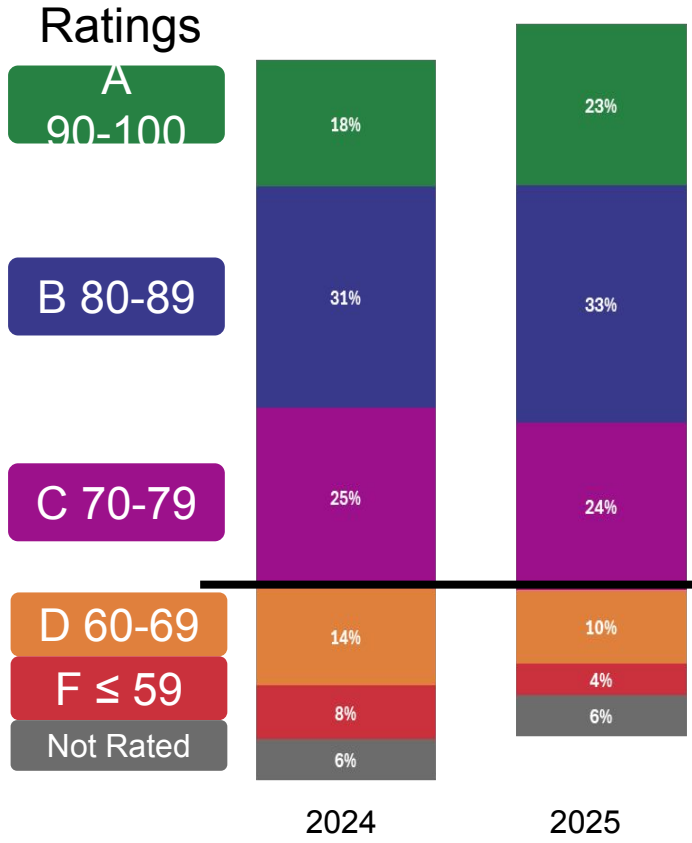
1. Ratings reflect better of achievement or progress
2. School performance is evaluated through multiple valid measures
3. Ratings are based on defined criteria, not a fixed distribution
 - “A” reflects performance consistent with reaching long term student goals
 - “C” reflects average performance for the baseline year
4. The system design remains static in most years

2025 A-F Ratings and District Results

Overall District Ratings Results: 2024 to 2025 Comparison



Across Texas Campuses: 2024 vs 2025 Ratings



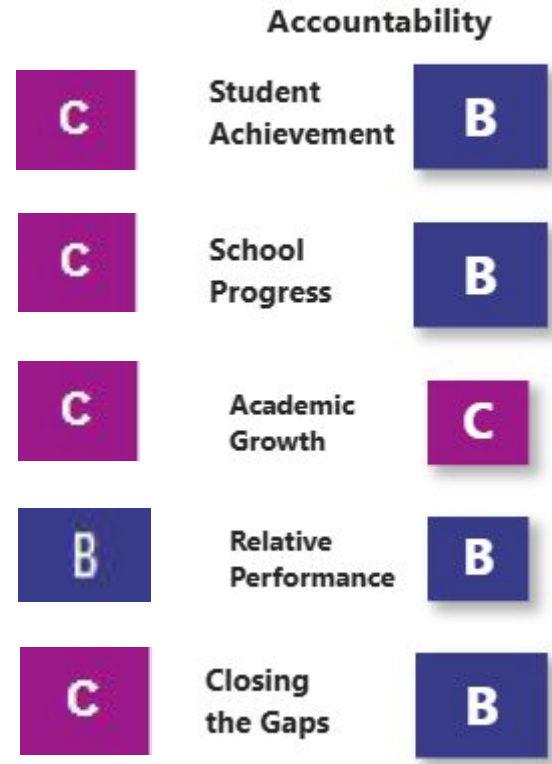
31% districts increased in ratings from the prior year.

Stayed the Same	Increased	Decreased
4855	2714	1290
55%	31%	15%

86% of districts stayed in the same score or improved from the prior year.

Our Campuses: 2024 to 2025 Ratings

BRACKETT ISD KINNEY COUNTY



Overall District Rating Results: 2019 to 2025

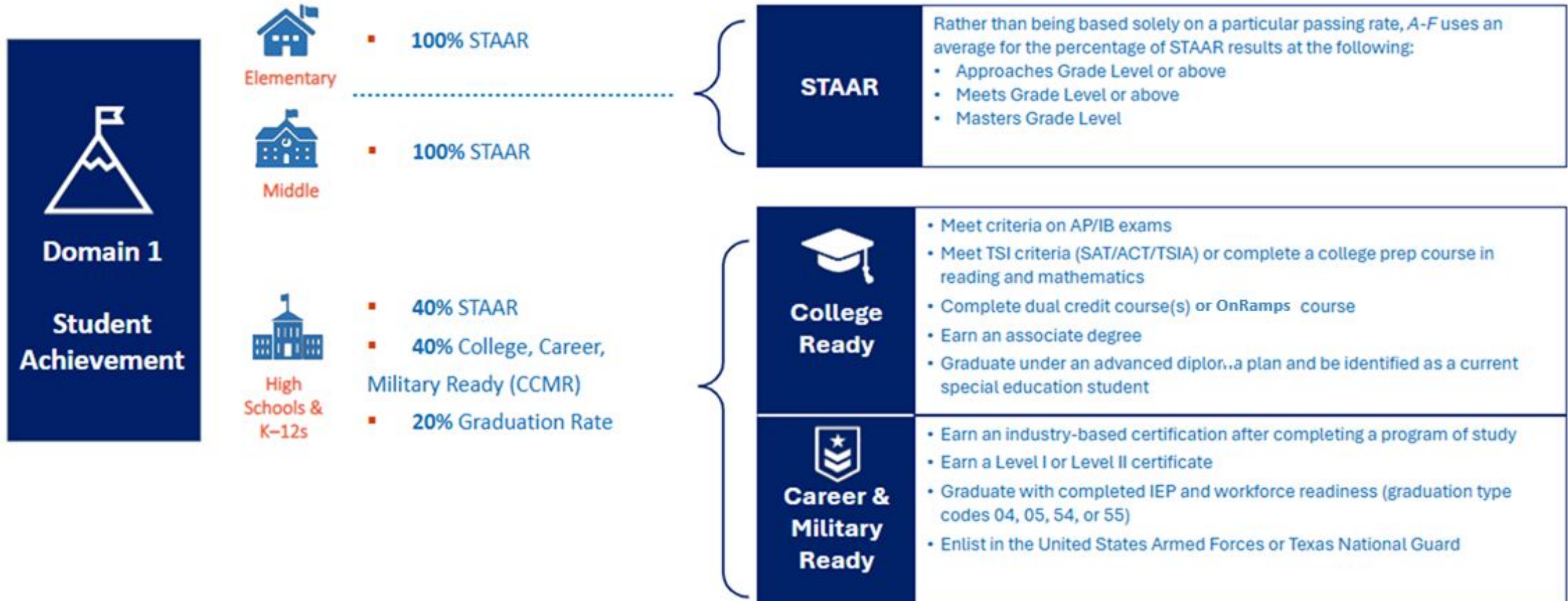


District Performance Over Time					
2019	2022	2022 "What If"	2023	2024	2025
90	89	80	79	79	81

Domain I: Student Achievement

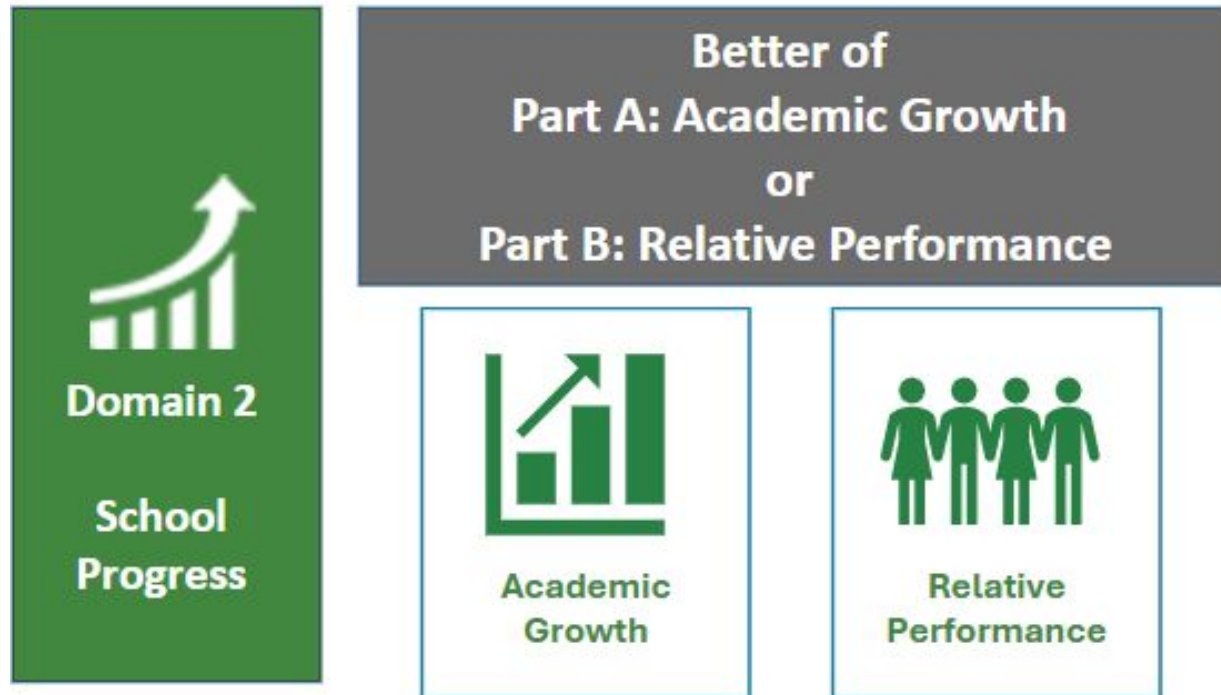
Domain 1: Student Achievement

Ratings in this domain are based on how many students are approaching, meeting, and mastering grade level on STAAR as well as how many students graduate and whether those graduates are ready for college, a career, or the military.



[Click here for examples for how student achievement is calculated](#)

Domain 2: School Progress Part A and B



The School Progress domain measures district and campus outcomes in two areas:

- The number of students that **grew at least one year academically** and number of students that were **accelerated** as measured by year-over-year STAAR results
- The achievement of students relative to campuses with **similar economically disadvantaged** percentages

Domain III – Closing the Gaps

Domain 3: Closing the Gaps

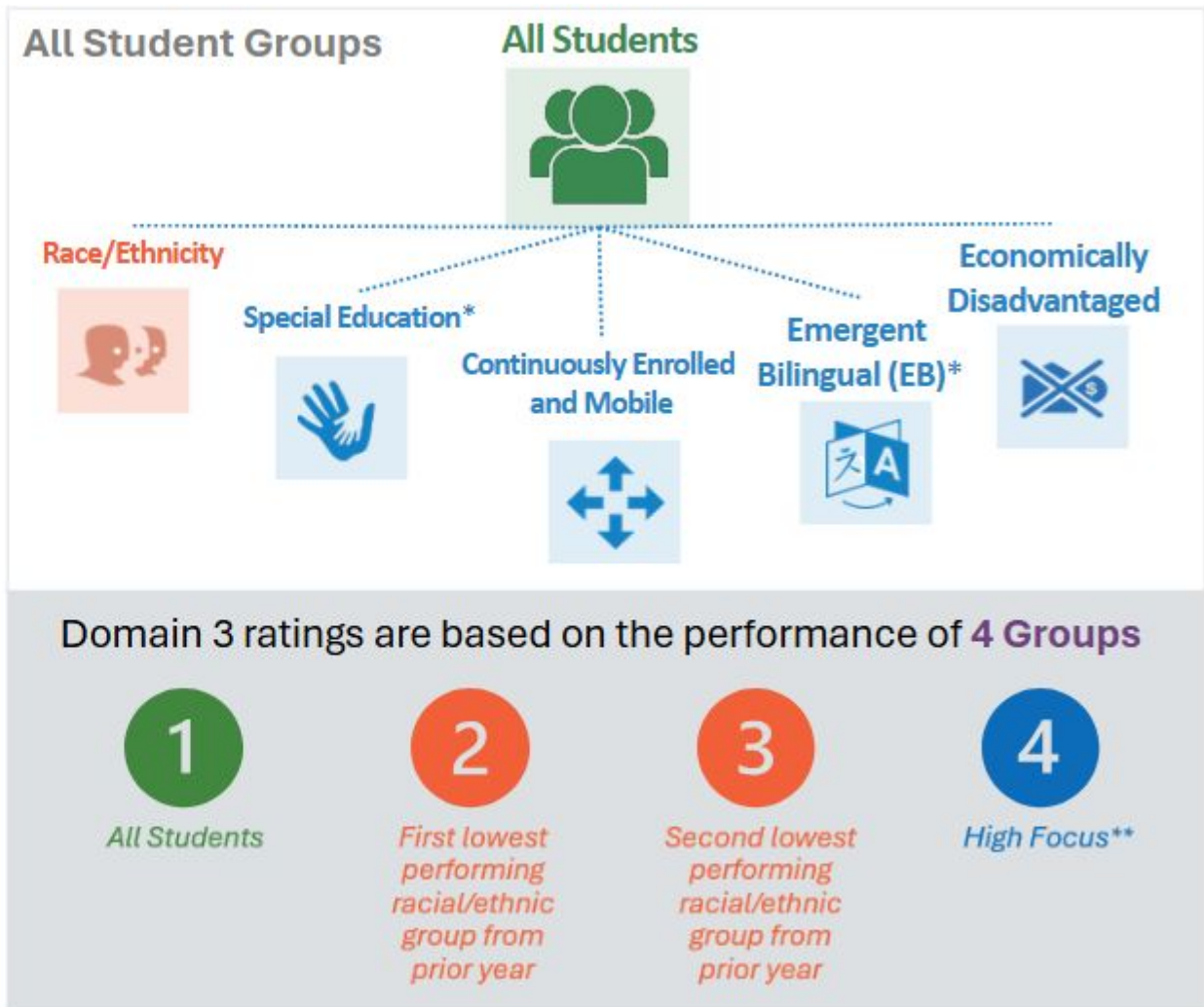


Domain 3

Closing the Gaps

- Domains 1 & 2 examine the performance of all students on average (for both achievement and progress).
- Domain 3 examines the performance of groups of students, to ensure gaps are closing (for both achievement and progress).

Domain 3 is used to comply to meet federal ESSA requirements



*Includes current and former/monitored SPED/EB

**High Focus is an unduplicated count of economically disadvantaged, EB, current special education, and/or highly mobile (homeless, migrant, or in foster care) students

33

[Click here for examples of how closing the gaps is calculated](#)

Local Comparisons and Context

DISTRICT PROFILE

School

District

2024-25 Comparison

Glossary of Terms

Reset Districts ↻

District #1 Dropdown

Search By: District Name, District # or County Name

B

Accountability

Student Achievement C

School Progress B

Academic Growth C

Relative Performance B

Closing the Gaps B

STAAR Performance Approaches

74% Meets

49% Masters

22%

Graduation Rate

86.6% 86.3% 86.4%

4-Year 5-Year 6-Year

District #2 Dropdown

Search By: District Name, District # or County Name

B

Accountability

Student Achievement C

School Progress B

Academic Growth C

Relative Performance B

Closing the Gaps B

STAAR Performance Approaches

72% Meets

46% Masters

19%

Graduation Rate

85.5% 85.2% 84.7%

4-Year 5-Year 6-Year

District #3 Dropdown

Search By: District Name, District # or County Name

C

Accountability

Student Achievement D

School Progress C

Academic Growth D

Relative Performance C

Closing the Gaps C

STAAR Performance Approaches

60% Meets

32% Masters

10%

Graduation Rate

87.3% 89.4% 89.8%

4-Year 5-Year 6-Year

Compare tool provides side by side comparison of school or district reports

District Comparison

District #1 Dropdown

Click on 'Reset Districts' to clear selection.

BRACKETT ISD \ KINNEY COUNTY \ 136901

B

Accountability

Student Achievement

B

School Progress

B

Academic Growth

C

Relative Performance

B

Closing the Gaps

B

STAAR Performance Approaches

77%

Meets

48%

Masters

15%

Graduation Rate



District #2 Dropdown

Search By: District Name, District # or County Name

SABINAL ISD \ UVALDE COUNTY \ 232902

D

Accountability

Student Achievement

C

School Progress

C

Academic Growth

F

Relative Performance

C

Closing the Gaps

F

STAAR Performance Approaches

68%

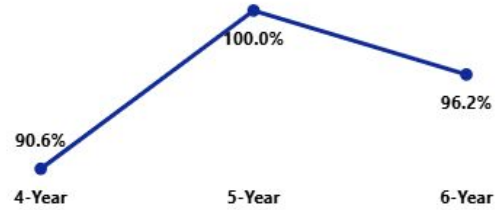
Meets

40%

Masters

12%

Graduation Rate



District #3 Dropdown

Search By: District Name, District # or County Name

ROCKSPRINGS ISD \ EDWARDS COUNTY \ 069901

C

Accountability

Student Achievement

C

School Progress

C

Academic Growth

C

Relative Performance

D

Closing the Gaps

C

STAAR Performance Approaches

70%

Meets

40%

Masters

12%

Graduation Rate



District Comparisons

District #1 Dropdown

Click on 'Reset Districts' to clear selection.

☐ BRACKETT ISD \ KINNEY COUNTY \ 136901

B

Accountability

Student Achievement

B

School Progress

B

Academic Growth

C

Relative Performance

B

Closing the Gaps

B

STAAR Performance Approaches

77%

Meets

48%

Masters

15%

Graduation Rate



District #2 Dropdown

Search By: District Name, District # or County Name

☐ LA PRYOR ISD \ ZAVALA COUNTY \ 254902

D

Accountability

Student Achievement

D

School Progress

D

Academic Growth

D

Relative Performance

D

Closing the Gaps

F

STAAR Performance Approaches

70%

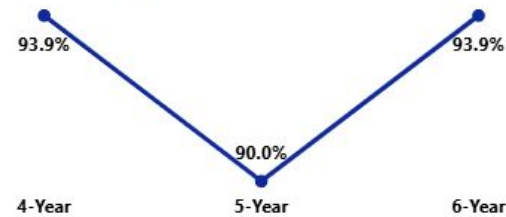
Meets

42%

Masters

11%

Graduation Rate



District #3 Dropdown

Search By: District Name, District # or County Name

☐ KNIPPA ISD \ UVALDE COUNTY \ 232901

B

Accountability

Student Achievement

B

School Progress

B

Academic Growth

C

Relative Performance

B

Closing the Gaps

A

STAAR Performance Approaches

92%

Meets

69%

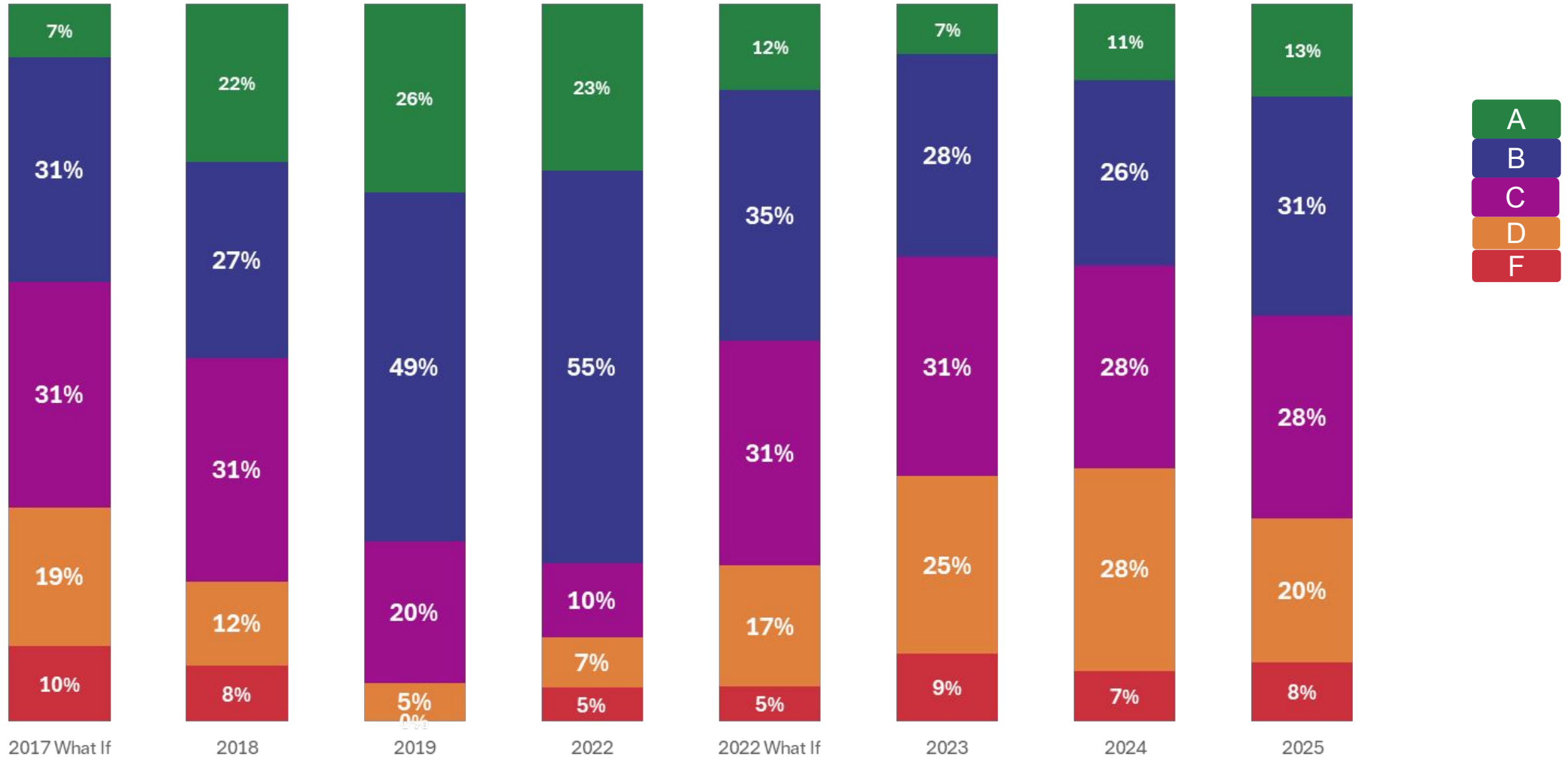
Masters

29%

Graduation Rate



Region 20: San Antonio



BRACKETT HS
District: **Brackett ISD** Grades Served: **Grade 9 - Grade 12**

Address:
201 N Ann St, Brackettville, TX 78832
Phone:
(830) 563-2480

PROFILE PERFORMANCE FINANCE

TOOLS AND REPORTS COMPARE REPORT CARDS

Overall Performance Details

Student Achievement

91 out of 100

Year	Score
2022-23	81
2023-24	77
2024-25	91

2022-23 2023-24 2024-25

Student Achievement measures whether students met expectations on the STAAR test. It also measures graduation rates and how prepared students are for success after high school.

School Progress

90 out of 100

Year	Score
2022-23	80
2023-24	86
2024-25	90

2022-23 2023-24 2024-25

School Progress shows how students perform over time and how the school's performance compares to other schools with similar economically disadvantaged student populations.

Closing the Gaps

92 out of 100

Year	Score
2022-23	74
2023-24	73
2024-25	92

2022-23 2023-24 2024-25

Closing the Gaps tells us how well a school is ensuring that all student groups are successful.

Distinction Designations

Academic Achievement in Reading/ Language Arts

Academic Achievement in Mathematics

Academic Achievement in Science

Academic Achievement in Social Studies

Top 25% : Comparative Academic Growth

Postsecondary Readiness

Top 25% : Comparative Closing the Gaps

BRACKETT JH

District: Brackett ISD Grades Served: Grade 6 - Grade 8

Attendance Rate



Reading

86%

JONES ELEM/INTERMEDIATE SCHOOL

District: Brackett ISD Grades Served: Prekindergarten - Grade 5

Reading



81%

JONES ELEM/INTERMEDIATE SCHOOL

District: **Brackett ISD** Grades Served: **Prekindergarten - Grade 5**

[PROFILE](#) [PERFORMANCE ▾](#) [FINANCE](#)

Academic Growth Details

Annual Growth Score



This score approximates the percentage of students that made at least one year of academic progress

Accelerated Learning Score



This score represents the percentage of students who were behind academically and made at least one year of academic progress

JONES ELEM/INTERMEDIATE SCHOOL

District: **Brackett ISD** Grades Served: **Prekindergarten - Grade 5**

Subject	This School
All Subjects	72%
Reading	81%
Math	70%
Science	53%

BRACKETT JH

District: **Brackett ISD** Grades Served: **Grade 6 - Grade 8**

Subject	This School
All Subjects	74%
Reading	86%
Math	69%
Science	79%
Social Studies	45%



Thank You