

The Enrollment Future of District 97

The critical question now becomes, what exactly will happen to enrollment in District 97 over the next ten years? Which grade levels will it impact most? Which schools will be most affected? My analysis of registered births data for the Oak Park, trends in kindergarten enrollments, housing turnover, and student migration/ transfer patterns lead me to forecast an approximately 200-student increase for District enrollment as a whole over the next eight years (after which it will stabilize) with almost all of the increase accounted for by four schools: Hatch, Lincoln, and Longfellow Elementary Schools and Brooks Middle School. Before presenting and elaborating upon these trends, let me describe the factors underlying the projections.

Table 37 provides information on births to residents of Oak Park from 1980 to 2014. In a general (but quite inexact) sense, kindergarten enrollment lags annual community births by approximately five years. Though some annual fluctuations exist, there has been an overall downward trend in registered births to residents of Oak Park since 2000. Yet, given the growing number of residents over age 65 in Oak Park (see Table 3), housing turnover from empty-nesters to younger families should keep total kindergarten enrollment near last year's number (620) with net student migration to District 97 on the positive side. Thus,

despite very limited new housing construction potential in the District, modest overall population growth should occur over the coming decades.

This prognostication is corroborated by population forecasts provided by the former Northeastern Illinois Planning Commission (now known as the Chicago Metropolitan Agency for Planning, or CMAP) for Oak Park. The latest CMAP forecasts presented in Table 38 indicate that between 2010 and 2040 Oak Park' population will grow by 4,997. The main factor depressing total District enrollment in the future then will be lower births to residents in recent years and main positive factor, turnover of "empty nest" households to those with children. Housing turnover in Oak Park appears to be picking up from the 2008–2012 recession with sales prices edging up as well. The median home sales price along with number of sales are presented in Figure 2.

Another factor potentially impacting enrollment is changing racial/ethnic compositions of the District's residents and those in particular attendance areas. Appendix B presents the annual racial/ethnic mix of total District 97 students and for the individual schools between 2000 and 2016.

In projecting enrollment for District 97, two sets of interrelated factors play central causal roles. The first is future fertility rates and resulting family sizes. Any changes in fertility rates during the next five years will not affect enrollment projections because children who will be reaching kindergarten during the next five years are already born. Fertility rate changes during the next

five years could affect elementary school enrollments, beginning with school year 2021–22. However, recent demographic surveys of middle-income young adults (including minorities) do not lead one to expect significant changes in their fertility rates during the next five years. For this reason, all projections will assume that fertility rates remain near existing levels through 2021.

The second, and most critical factor for future enrollment in the schools is net student in-migration resulting from new housing development in the District and turnover of existing housing units. With respect to future new housing construction, the Albion at Oak Park is the only development currently anticipated. This 265-unit luxury rental apartment complex is forecasted to yield a total of nine elementary and middle school age residents, likely beginning in 2019.

The bottom line is, though, that since District 97 is basically build-out, future new housing development will likely have quite small impacts. Future student migration patterns will vary substantially, however, predicated on the degree of housing turnover (including teardowns), driven by economic conditions and mortgage interest rates. For this reason three sets of enrollment projections will be provided for the District as a whole and for Brooks and Julian Middle Schools through 2026–27. Individual elementary schools will be projected through 2021–22. These projections will be presented in the form of separate series based on the following assumptions:

- Series A:* Enrollment projection assuming future fertility rates remain constant (through 2021) and that housing turnover and resulting in-migration of families with preschool age and school age children *are less than anticipated* through 2026-27;
- Series B:* Enrollment projection assuming future fertility rates remain constant (through 2021) and that housing turnover and resulting in-migration of families with preschool age and school age children *occur as anticipated* through 2026-27;
- Series C:* Enrollment projection assuming future fertility rates remain constant (through 2021) and that housing turnover and resulting in-migration of families with preschool age and school age children *are greater than anticipated* through 2026-27.

The basic methodology used to make the three series of enrollment projections is a modified cohort survival procedure. Average cohort progression factors were computed for each grade transition for the past four years based on each school's migration/transfer figures shown previously. These average progression factors were adjusted for outliers in any given year and then applied to compute baseline enrollment projections (via conventional cohort survival techniques) for the school and the District. The sizes of future entering kindergarten classes were estimated using trends in birth registration data and recent kindergarten enrollments, student migration patterns, and anticipated housing turnover during the coming decade.

The next step was to adjust projected enrollment each year in grades 1 through 8 for possible alterations in housing turnover. To obtain the Series B enrollment projections, it was assumed that future trends in housing turnover (including teardowns) would mirror the average of the last four years. Series A

projections were made using similar methods but with student in-migration (resulting from lesser housing turnover) deflated by approximately 15 percent. Series C assumes a 15 percent increase in the amount of future in-migration of families with preschool and school age children to housing units in the District.

In projecting entering sixth grade students, Hatch, Holmes, Lincoln, and Whittier were assumed to be Brooks Middle School feeders, while Beye, Irving, Longfellow, and Mann were assumed to feed Julian Middle School. The fifth grade to sixth grade progressions to the middle schools also consider transfers from private and parochial schools as well as student in-migration from out of the district.

Table 37

Births to Residents of Oak Park, Illinois: 1980 to 2014

Year	Births
1980	781
1981	816
1982	824
1983	821
1984	868
1985	822
1986	758
1987	798
1988	751
1989	731
1990	661
1991	720
1992	852
1993	828
1994	804
1995	793
1996	792
1997	787
1998	737
1999	735
2000	746
2001	748
2002	687
2003	722
2004	706
2005	677
2006	675
2007	664
2008	662
2009	655
2010	638
2011	617
2012	619
2013	602
2014	626

Source: Illinois Department of Public Health. Automated Vital Records System, 1980–2006.
Cook County Department of Public Health, 2007–2014.

Table 38

Population and Households Change in Oak Park, Illinois:
2010 to 2030 and 2010 to 2040

Subject	2010 ^a	2030 ^b	Change	% Change
Population	51,878	54,280	2,402	4.6%
Households	22,670	23,103	433	1.9%

Subject	2010 ^a	2040 ^c	Change	% Change
Population	51,878	56,875	4,997	9.6%
Households	22,670	24,949	2,279	10.1%

^a U.S. Bureau of the Census. Decennial Census of Population and Housing, 2010.

^b Northeastern Illinois Planning Commission. 2030 Forecasts of Population, Households and Employment by County and Municipality. September 27, 2006.

^c Chicago Metropolitan Agency for Planning 2040 Forecast of Population, Households and Employment. October 10, 2014.

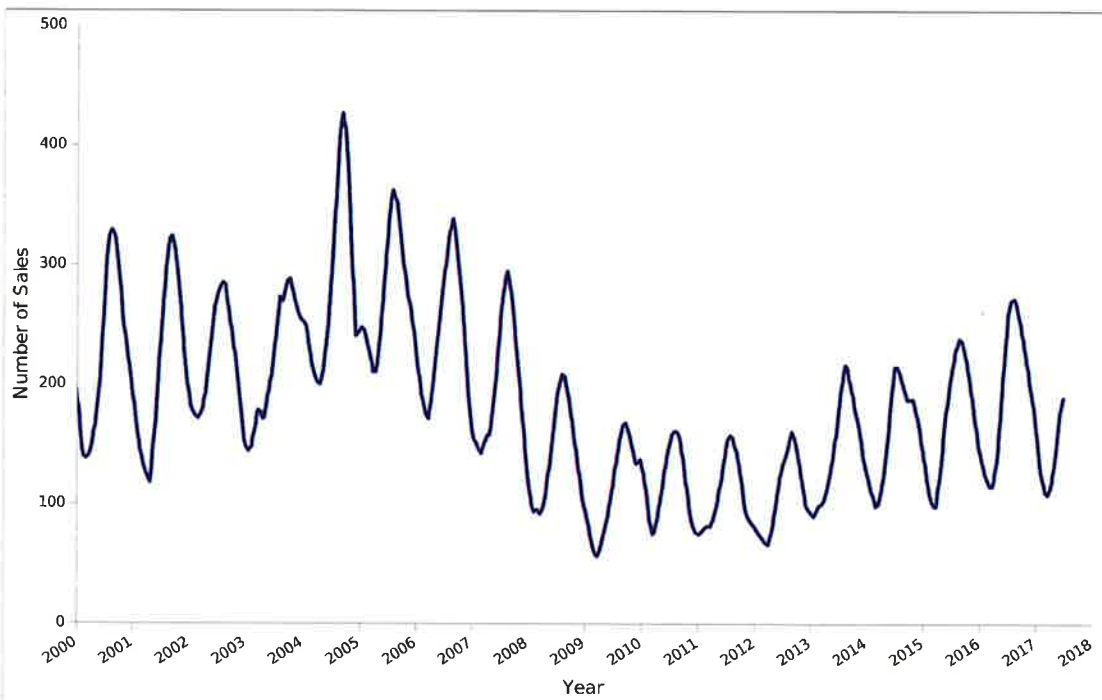
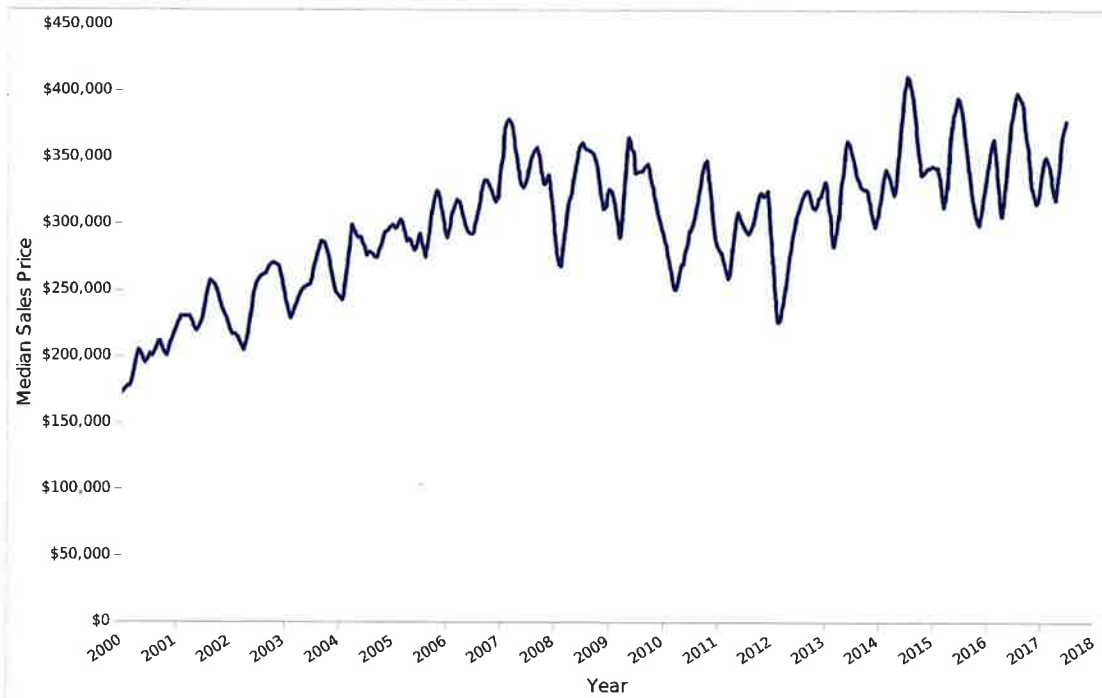


Figure 2. Median Home Sales Price and Number of Sales in Oak Park, Illinois.

Source: Adapted from Trulia.com.

Enrollment Projections

Tables 39 through 68 provide the grade by grade and year by year projections through school year 2021-22 for each of the eight elementary schools and through 2026-27 for the two middle schools under the Series A, Series B, and Series C assumptions. Because the precise annual projected number for every school by grade may be observed in their respective tables, I will comment only on projected total enrollment trends at each school, focusing on Series B, which I believe is the most likely.

If housing turnover and family in-migration occur as anticipated in each elementary school attendance area, the Series B projections show that Beye, Irving, Mann, and Whitter Elementary Schools will remain quite stable over the next five years. Hatch, Lincoln, and Longfellow Elementary Schools will increase modestly from last year's enrollments, while Holmes Elementary School will fluctuate at numbers slightly above last year's 549 count.

Under the most likely Series B assumptions, enrollment at Brooks Middle School will dip slightly in 2017-18 and 2018-19 from last year's 990 enrollment. It will then rise to 1,114 students in 2022-23 and fluctuate modestly below that number during the following four years.

Julian Middle School will remain fairly stable for the coming four years near last year's 1,004 students, then dip to 941 students in 2021-22. Its enrollment

will bounce back to 1,005 students in 2024–25 before slipping slightly to 989 students in 2026–27.

An important caveat should be noted regarding enrollment projections for the individual elementary schools. A number of District 97 elementary schools had highly fluctuating kindergarten enrollments during the past four years. This makes accurate estimates of their future kindergarten counts very difficult. I was, therefore, required to use professional judgment in making these estimates which included some smoothing of kindergarten enrollments in future years at these schools.

Another caveat refers to enrollment projections beyond school year 2021–22. At the middle school level, projections for the next five years can be made with more confidence than for the five years following 2021–22, since most students who will enter the middle schools through 2022–23 are already enrolled in the elementary feeder schools. Afterwards, we are projecting many students yet to even register in District 97 elementary schools. For the individual elementary schools, projections after 2021–22 are extremely risky since, in addition to their bouncing kindergarten enrollments in recent years, they would include students yet to be conceived. It is for this reason that I projected individual elementary schools only to 2021–22. Projections thereafter are provided, however, for the aggregate elementary school enrollment in District 97

to 2026–27, based on assumptions noted, since this is somewhat less risky than projecting individual elementary schools beyond 2021–22.

Tables 69, 70, and 71 present, respectively, the Series A, Series B, and Series C projections, by year and by grade, for the District as a whole through school year 2026–27. These aggregate projections were made based on district-wide data and analysis, independent of the individual school enrollment projections. You will see, though, that for Series B, the sum of the individual school projections comes quite close to the independently project District 97 Series B total amounts. Series A District totals will be higher than the sum of individual school Series A projections since it is unlikely that all schools will simultaneously follow the low Series. The converse holds for the District-wide Series C projections, which will be lower than the sum of the individual schools Series C projections.

Should housing turnover and student in-migration be less than anticipated (Series A), Table 69 reveals that total District enrollment will decline from 6,065 last year to 5,710 in 2026–27. While the Series A projections may be considered conservative by many, they should not be dismissed out of hand. If we slip back into a prolonged recession or if mortgage interest rates rise considerably, housing turnover will slow and enrollment declines could recommence.

Should housing turnover and resulting student in-migration occur as I anticipate, the Series B projections presented in Table 70 show that total District enrollment will rise to 6,269 students in 2026–27. Most of this growth will occur during the next seven years. To repeat, it is my professional judgment that Series B is the most likely set of projections for the District as well as for the individual schools.

If the future housing development, housing turnover, and student in-migration exceed current expectations, Series C projections presented in Table 71 show total District enrollment climbing to 6,873 in 2026–27. My judgment is that this upper limit enrollment parameter for District 97 is unlikely to be reached.

Concluding Remarks

As stated in my prior report, no demographer has a crystal ball. In this report, I have assembled the best information presently available and applied professional techniques and judgment to project enrollments for District 97 schools. Given fluctuating kindergarten enrollments in the District's individual elementary schools, these projections should be monitored and updated regularly (at least every three years) to ensure that policy decisions are based on the latest and most reliable figures. At this time, it is my hope that the projections and other demographic information contained in this report will be helpful to the District 97 Board of Education, administrators, teachers, and concerned citizens as plans are made for future space and staff needs in District 97 schools.

John D. Kasarda, Ph.D.
Chapel Hill, North Carolina
August 6, 2017

Table 39

Enrollment Projection Assuming Future Fertility Rates Remain Constant (through 2021)
and that Housing Turnover and Resulting In-Migration of Families with Preschool Age and School Age Children
Are Less than Anticipated through 2021–22

Beye Elementary School

<i>Series A Projection</i>						
Grade	2016–17	2017–18	2018–19	2019–20	2020–21	2021–22
K	51	54	59	51	54	55
1	64	50	53	58	50	53
2	57	63	49	52	57	49
3	52	56	62	48	51	56
4	72	51	55	61	47	50
5	60	70	49	53	59	45
K–5	356	344	327	323	318	308
PK	0	0	0	0	0	0
Sp. Ed.	16	14	13	13	13	13
Total	372	358	340	336	331	321

Table 40

Enrollment Projection Assuming Future Fertility Rates Remain Constant (through 2021)
and that Housing Turnover and Resulting In-Migration of Families with Preschool Age and School Age Children
Occur As Anticipated through 2021–22

Beye Elementary School

<i>Series B Projection</i>						
Grade	2016–17	2017–18	2018–19	2019–20	2020–21	2021–22
K	51	59	63	55	58	59
1	64	52	60	64	56	59
2	57	65	53	61	65	57
3	52	58	66	54	62	66
4	72	53	59	67	55	63
5	60	72	53	59	67	55
K–5	356	359	354	360	363	359
PK	0	0	0	0	0	0
Sp. Ed.	16	17	17	17	17	17
Total	372	376	371	377	380	376

Table 41

Enrollment Projection Assuming Future Fertility Rates Remain Constant (through 2021)
and that Housing Turnover and Resulting In-Migration of Families with Preschool Age and School Age Children
Are Greater than Anticipated through 2021–22

Beye Elementary School

<i>Series C Projection</i>						
Grade	2016–17	2017–18	2018–19	2019–20	2020–21	2021–22
K	51	64	66	59	62	64
1	64	54	67	69	62	65
2	57	67	57	70	72	65
3	52	60	70	60	73	75
4	72	55	63	73	63	76
5	60	74	57	65	75	65
K–5	356	374	380	396	407	410
PK	0	0	0	0	0	0
Sp. Ed.	16	20	21	21	22	22
Total	372	394	401	417	429	432

Table 42

Enrollment Projection Assuming Future Fertility Rates Remain Constant (through 2021)
and that Housing Turnover and Resulting In-Migration of Families with Preschool Age and School Age Children
Are Less than Anticipated through 2021–22

Hatch Elementary School

<i>Series A Projection</i>						
Grade	2016–17	2017–18	2018–19	2019–20	2020–21	2021–22
K	58	52	48	50	56	52
1	58	60	54	50	52	58
2	77	58	60	54	50	52
3	51	75	56	58	52	48
4	46	48	72	53	55	49
5	52	43	45	69	50	52
K–5	342	336	335	334	315	311
PK	0	0	0	0	0	0
Sp. Ed.	0	0	0	0	0	0
Total	342	336	335	334	315	311

Table 43

Enrollment Projection Assuming Future Fertility Rates Remain Constant (through 2021)
and that Housing Turnover and Resulting In-Migration of Families with Preschool Age and School Age Children
Occur As Anticipated through 2021–22

Hatch Elementary School

<i>Series B Projection</i>						
Grade	2016–17	2017–18	2018–19	2019–20	2020–21	2021–22
K	58	56	52	54	60	57
1	58	63	61	57	59	65
2	77	60	65	63	59	61
3	51	77	60	65	63	59
4	46	50	76	59	64	62
5	52	45	49	75	58	63
K–5	342	351	363	373	363	367
PK	0	0	0	0	0	0
Sp. Ed.	0	0	0	0	0	0
Total	342	351	363	373	363	367

Table 44

Enrollment Projection Assuming Future Fertility Rates Remain Constant (through 2021)
and that Housing Turnover and Resulting In-Migration of Families with Preschool Age and School Age Children
Are Greater than Anticipated through 2021–22

Hatch Elementary School

<i>Series C Projection</i>						
Grade	2016–17	2017–18	2018–19	2019–20	2020–21	2021–22
K	58	59	56	58	64	61
1	58	65	66	63	65	71
2	77	62	69	70	67	69
3	51	79	64	71	72	69
4	46	52	80	65	72	73
5	52	47	53	81	66	73
K–5	342	364	388	408	406	416
PK	0	0	0	0	0	0
Sp. Ed.	0	0	0	0	0	0
Total	342	364	388	408	406	416

Table 45

Enrollment Projection Assuming Future Fertility Rates Remain Constant (through 2021)
and that Housing Turnover and Resulting In-Migration of Families with Preschool Age and School Age Children
Are Less than Anticipated through 2021–22

Holmes Elementary School

<i>Series A Projection</i>						
Grade	2016–17	2017–18	2018–19	2019–20	2020–21	2021–22
K	85	80	82	84	83	85
1	107	88	83	85	87	86
2	101	103	84	79	81	83
3	88	101	103	84	79	81
4	84	83	96	98	79	74
5	80	86	85	98	100	81
K–5	545	541	533	528	509	490
PK	0	0	0	0	0	0
Sp. Ed.	4	2	2	2	2	2
Total	549	543	535	530	511	492

Table 46

Enrollment Projection Assuming Future Fertility Rates Remain Constant (through 2021)
and that Housing Turnover and Resulting In-Migration of Families with Preschool Age and School Age Children
Occur As Anticipated through 2021–22

Holmes Elementary School

<i>Series B Projection</i>						
Grade	2016–17	2017–18	2018–19	2019–20	2020–21	2021–22
K	85	85	87	89	88	90
1	107	91	91	93	95	94
2	101	106	90	90	92	94
3	88	103	108	92	92	94
4	84	85	100	105	89	89
5	80	88	89	104	109	93
K–5	545	558	565	573	565	554
PK	0	0	0	0	0	0
Sp. Ed.	4	5	5	5	5	4
Total	549	563	570	578	570	558

Table 47

Enrollment Projection Assuming Future Fertility Rates Remain Constant (through 2021)
and that Housing Turnover and Resulting In-Migration of Families with Preschool Age and School Age Children
Are Greater than Anticipated through 2021–22

Holmes Elementary School

<i>Series C Projection</i>						
Grade	2016–17	2017–18	2018–19	2019–20	2020–21	2021–22
K	85	88	91	93	92	94
1	107	93	96	99	101	100
2	101	108	94	97	100	102
3	88	105	112	98	101	104
4	84	88	105	112	98	101
5	80	90	94	111	118	104
K–5	545	572	592	610	610	605
PK	0	0	0	0	0	0
Sp. Ed.	4	8	8	9	9	8
Total	549	580	600	619	619	613

Table 48

Enrollment Projection Assuming Future Fertility Rates Remain Constant (through 2021)
and that Housing Turnover and Resulting In-Migration of Families with Preschool Age and School Age Children
Are Less than Anticipated through 2021–22

Irving Elementary School

<i>Series A Projection</i>						
Grade	2016–17	2017–18	2018–19	2019–20	2020–21	2021–22
K	76	69	70	65	66	67
1	74	78	71	72	67	68
2	68	74	78	71	72	67
3	68	67	73	77	70	71
4	95	63	62	68	72	65
5	82	93	61	60	66	70
K–5	463	444	415	413	413	408
PK	0	0	0	0	0	0
Sp. Ed.	23	19	18	18	18	18
Total	486	463	433	431	431	426

Table 49

Enrollment Projection Assuming Future Fertility Rates Remain Constant (through 2021)
and that Housing Turnover and Resulting In-Migration of Families with Preschool Age and School Age Children
Occur As Anticipated through 2021–22

Irving Elementary School

<i>Series B Projection</i>						
Grade	2016–17	2017–18	2018–19	2019–20	2020–21	2021–22
K	76	74	75	70	71	73
1	74	80	78	79	74	75
2	68	76	82	80	81	76
3	68	70	78	84	82	83
4	95	65	67	75	81	79
5	82	95	65	67	75	81
K–5	463	460	445	455	464	467
PK	0	0	0	0	0	0
Sp. Ed.	23	22	21	22	22	23
Total	486	482	466	477	486	490

Table 50

Enrollment Projection Assuming Future Fertility Rates Remain Constant (through 2021)
and that Housing Turnover and Resulting In-Migration of Families with Preschool Age and School Age Children
Are Greater than Anticipated through 2021–22

Irving Elementary School

<i>Series C Projection</i>						
Grade	2016–17	2017–18	2018–19	2019–20	2020–21	2021–22
K	76	78	79	75	76	78
1	74	82	84	85	81	82
2	68	78	86	88	89	85
3	68	72	82	90	92	93
4	95	67	71	81	89	91
5	82	97	69	73	83	91
K–5	463	474	471	492	510	520
PK	0	0	0	0	0	0
Sp. Ed.	23	25	25	26	27	28
Total	486	499	496	518	537	548

Table 51

Enrollment Projection Assuming Future Fertility Rates Remain Constant (through 2021)
and that Housing Turnover and Resulting In-Migration of Families with Preschool Age and School Age Children
Are Less than Anticipated through 2021–22

Lincoln Elementary School

<i>Series A Projection</i>						
Grade	2016–17	2017–18	2018–19	2019–20	2020–21	2021–22
K	118	100	101	102	98	102
1	110	127	109	110	111	107
2	105	103	120	102	103	104
3	110	102	100	117	99	100
4	106	109	101	99	116	98
5	106	104	107	99	97	114
K–5	655	645	638	629	624	625
PK	0	0	0	0	0	0
Sp. Ed.	16	13	13	13	13	13
Total	671	658	651	642	637	638

Table 52

Enrollment Projection Assuming Future Fertility Rates Remain Constant (through 2021)
and that Housing Turnover and Resulting In-Migration of Families with Preschool Age and School Age Children
Occur As Anticipated through 2021–22

Lincoln Elementary School

<i>Series B Projection</i>						
Grade	2016–17	2017–18	2018–19	2019–20	2020–21	2021–22
K	118	104	105	107	103	107
1	110	129	115	116	118	114
2	105	106	125	111	112	114
3	110	105	106	125	111	112
4	106	112	107	108	127	113
5	106	107	113	108	109	128
K–5	655	663	671	675	680	688
PK	0	0	0	0	0	0
Sp. Ed.	16	16	16	16	16	17
Total	671	679	687	691	696	705

Table 53

Enrollment Projection Assuming Future Fertility Rates Remain Constant (through 2021)
and that Housing Turnover and Resulting In-Migration of Families with Preschool Age and School Age Children
Are Greater than Anticipated through 2021–22

Lincoln Elementary School

<i>Series C Projection</i>						
Grade	2016–17	2017–18	2018–19	2019–20	2020–21	2021–22
K	118	109	110	112	109	112
1	110	131	122	123	125	122
2	105	108	129	120	121	123
3	110	107	110	131	122	123
4	106	114	111	114	135	126
5	106	109	117	114	117	138
K–5	655	678	699	714	729	744
PK	0	0	0	0	0	0
Sp. Ed.	16	19	20	20	20	21
Total	671	697	719	734	749	765

Table 54

Enrollment Projection Assuming Future Fertility Rates Remain Constant (through 2021)
and that Housing Turnover and Resulting In-Migration of Families with Preschool Age and School Age Children
Are Less than Anticipated through 2021–22

Longfellow Elementary School

<i>Series A Projection</i>						
Grade	2016–17	2017–18	2018–19	2019–20	2020–21	2021–22
K	97	93	87	91	88	89
1	99	103	99	93	97	94
2	91	97	101	97	91	95
3	108	89	95	99	95	89
4	98	108	89	95	99	95
5	106	95	105	86	92	96
K–5	599	585	576	561	562	558
PK	119	109	114	111	112	111
Sp. Ed.	19	16	16	15	15	15
Total	737	710	706	687	689	684

Table 55

Enrollment Projection Assuming Future Fertility Rates Remain Constant (through 2021)
and that Housing Turnover and Resulting In-Migration of Families with Preschool Age and School Age Children
Occur As Anticipated through 2021–22

Longfellow Elementary School

<i>Series B Projection</i>						
Grade	2016–17	2017–18	2018–19	2019–20	2020–21	2021–22
K	97	98	92	96	92	94
1	99	106	107	101	105	101
2	91	101	108	109	103	107
3	108	92	102	109	110	104
4	98	111	95	105	112	113
5	106	99	112	96	106	113
K–5	599	607	616	616	628	632
PK	119	114	119	114	117	116
Sp. Ed.	19	19	19	19	20	20
Total	737	740	754	749	765	768

Table 56

Enrollment Projection Assuming Future Fertility Rates Remain Constant (through 2021)
and that Housing Turnover and Resulting In-Migration of Families with Preschool Age and School Age Children
Are Greater than Anticipated through 2021–22

Longfellow Elementary School

<i>Series C Projection</i>						
Grade	2016–17	2017–18	2018–19	2019–20	2020–21	2021–22
K	97	102	96	100	96	98
1	99	108	113	107	111	107
2	91	104	113	118	112	116
3	108	95	108	117	122	116
4	98	113	100	113	122	127
5	106	102	117	104	117	126
K–5	599	624	647	659	680	690
PK	119	119	124	119	122	120
Sp. Ed.	19	24	25	25	26	27
Total	737	767	796	803	828	837

Table 57

Enrollment Projection Assuming Future Fertility Rates Remain Constant (through 2021)
and that Housing Turnover and Resulting In-Migration of Families with Preschool Age and School Age Children
Are Less than Anticipated through 2021–22

Mann Elementary School

<i>Series A Projection</i>						
Grade	2016–17	2017–18	2018–19	2019–20	2020–21	2021–22
K	77	70	71	73	68	69
1	74	78	71	72	74	69
2	73	70	74	67	68	70
3	83	70	67	71	64	65
4	77	80	67	64	68	61
5	73	74	77	64	61	65
K–5	457	442	427	411	403	399
PK	0	0	0	0	0	0
Sp. Ed.	0	0	0	0	0	0
Total	457	442	427	411	403	399

Table 58

Enrollment Projection Assuming Future Fertility Rates Remain Constant (through 2021)
and that Housing Turnover and Resulting In-Migration of Families with Preschool Age and School Age Children
Occur As Anticipated through 2021–22

Mann Elementary School

<i>Series B Projection</i>						
Grade	2016–17	2017–18	2018–19	2019–20	2020–21	2021–22
K	77	75	76	77	72	73
1	74	80	78	79	80	75
2	73	72	78	76	77	78
3	83	72	71	77	75	76
4	77	82	71	70	76	74
5	73	77	82	71	70	76
K–5	457	458	456	450	450	452
PK	0	0	0	0	0	0
Sp. Ed.	0	0	0	0	0	0
Total	457	458	456	450	450	452

Table 59

Enrollment Projection Assuming Future Fertility Rates Remain Constant (through 2021)
and that Housing Turnover and Resulting In-Migration of Families with Preschool Age and School Age Children
Are Greater than Anticipated through 2021–22

Mann Elementary School

<i>Series C Projection</i>						
Grade	2016–17	2017–18	2018–19	2019–20	2020–21	2021–22
K	77	79	80	83	76	78
1	74	83	85	86	89	82
2	73	75	84	86	87	90
3	83	75	77	86	88	89
4	77	85	77	79	88	90
5	73	79	87	79	81	90
K–5	457	476	490	499	509	519
PK	0	0	0	0	0	0
Sp. Ed.	0	0	0	0	0	0
Total	457	476	490	499	509	519

Table 60

Enrollment Projection Assuming Future Fertility Rates Remain Constant (through 2021)
and that Housing Turnover and Resulting In-Migration of Families with Preschool Age and School Age Children
Are Less than Anticipated through 2021–22

Whittier Elementary School

<i>Series A Projection</i>						
Grade	2016–17	2017–18	2018–19	2019–20	2020–21	2021–22
K	58	54	55	53	56	57
1	64	59	55	56	54	57
2	64	62	57	53	54	52
3	54	63	61	56	52	53
4	66	53	62	60	55	51
5	65	65	52	61	59	54
K–5	371	356	342	339	330	324
PK	58	47	46	48	49	49
Sp. Ed.	28	22	21	21	20	20
Total	457	425	409	408	399	393

Table 61

Enrollment Projection Assuming Future Fertility Rates Remain Constant (through 2021)
and that Housing Turnover and Resulting In-Migration of Families with Preschool Age and School Age Children
Occur As Anticipated through 2021–22

Whittier Elementary School

<i>Series B Projection</i>						
Grade	2016–17	2017–18	2018–19	2019–20	2020–21	2021–22
K	58	58	59	57	60	61
1	64	61	61	62	60	63
2	64	64	61	61	62	60
3	54	65	65	62	62	63
4	66	55	66	66	63	63
5	65	67	56	67	67	64
K–5	371	370	368	375	374	374
PK	58	55	53	56	57	57
Sp. Ed.	28	26	26	26	26	26
Total	457	451	447	457	457	457

Table 62

Enrollment Projection Assuming Future Fertility Rates Remain Constant (through 2021)
and that Housing Turnover and Resulting In-Migration of Families with Preschool Age and School Age Children
Are Greater than Anticipated through 2021–22

Whittier Elementary School

<i>Series C Projection</i>						
Grade	2016–17	2017–18	2018–19	2019–20	2020–21	2021–22
K	58	62	63	61	64	65
1	64	64	68	69	67	70
2	64	66	66	70	71	69
3	54	67	69	69	73	74
4	66	57	70	72	72	76
5	65	69	60	73	75	75
K–5	371	385	396	414	422	429
PK	58	60	58	61	62	61
Sp. Ed.	28	31	32	33	34	35
Total	457	476	486	508	518	525

Table 63

Enrollment Projection Assuming Future Fertility Rates Remain Constant (through 2021)
and that Housing Turnover and Resulting In-Migration of Families with Preschool Age and School Age Children
Are Less than Anticipated through 2026–27

Brooks Middle School

<i>Series A Projection</i>											
Grade	2016–17	2017–18	2018–19	2019–20	2020–21	2021–22	2022–23	2023–24	2024–25	2025–26	2026–27
6	295	298	293	284	322	301	296	263	263	266	270
7	327	298	301	296	287	325	304	299	266	266	269
8	330	327	298	301	296	287	325	304	299	266	266
6–8	952	923	892	881	905	913	925	866	828	798	805
Sp. Ed.	38	32	31	31	31	32	32	30	29	28	28
Total	990	955	923	912	936	945	957	896	857	826	833

Table 64

Enrollment Projection Assuming Future Fertility Rates Remain Constant (through 2021)
and that Housing Turnover and Resulting In-Migration of Families with Preschool Age and School Age Children
Occur As Anticipated through 2026–27

Brooks Middle School

<i>Series B Projection</i>											
Grade	2016–17	2017–18	2018–19	2019–20	2020–21	2021–22	2022–23	2023–24	2024–25	2025–26	2026–27
6	295	305	309	309	356	345	350	334	334	338	342
7	327	303	313	317	317	364	353	358	342	342	346
8	330	331	307	317	321	321	368	357	362	346	346
6–8	952	939	929	943	994	1,030	1,071	1,049	1,038	1,026	1,034
Sp. Ed.	38	38	38	38	40	42	43	42	42	41	42
Total	990	977	967	981	1,034	1,072	1,114	1,091	1,080	1,067	1,076

Table 65

Enrollment Projection Assuming Future Fertility Rates Remain Constant (through 2021)
and that Housing Turnover and Resulting In-Migration of Families with Preschool Age and School Age Children
Are Greater than Anticipated through 2026–27

Brooks Middle School

<i>Series C Projection</i>											
Grade	2016–17	2017–18	2018–19	2019–20	2020–21	2021–22	2022–23	2023–24	2024–25	2025–26	2026–27
6	295	317	329	338	393	390	404	403	405	409	414
7	327	308	330	342	351	406	403	417	416	418	422
8	330	335	316	338	350	359	414	411	425	424	426
6–8	952	960	975	1,018	1,094	1,155	1,221	1,231	1,246	1,251	1,262
Sp. Ed.	38	42	43	44	48	50	53	54	54	55	55
Total	990	1,002	1,018	1,062	1,142	1,205	1,274	1,285	1,300	1,306	1,317

Table 66

Enrollment Projection Assuming Future Fertility Rates Remain Constant (through 2021)
and that Housing Turnover and Resulting In-Migration of Families with Preschool Age and School Age Children
Are Less than Anticipated through 2026–27

Julian Middle School

<i>Series A Projection</i>											
Grade	2016–17	2017–18	2018–19	2019–20	2020–21	2021–22	2022–23	2023–24	2024–25	2025–26	2026–27
6	329	309	320	280	251	266	264	249	250	243	239
7	327	332	312	323	283	254	269	267	252	253	246
8	324	318	323	303	314	274	245	260	258	243	244
6–8	980	959	955	906	848	794	778	776	760	739	729
Sp. Ed.	24	18	18	17	16	15	15	14	14	14	14
Total	1,004	977	973	923	864	809	793	790	774	753	743

Table 67

Enrollment Projection Assuming Future Fertility Rates Remain Constant (through 2021)
and that Housing Turnover and Resulting In-Migration of Families with Preschool Age and School Age Children
Occur As Anticipated through 2026–27

Julian Middle School

<i>Series B Projection</i>											
Grade	2016–17	2017–18	2018–19	2019–20	2020–21	2021–22	2022–23	2023–24	2024–25	2025–26	2026–27
6	329	316	338	307	288	313	320	325	325	317	312
7	327	337	324	346	315	296	321	328	333	333	325
8	324	322	332	319	341	310	291	316	323	328	328
6–8	980	975	994	972	944	919	932	969	981	978	965
Sp. Ed.	24	24	24	24	23	22	23	24	24	24	24
Total	1,004	999	1,018	996	967	941	955	993	1,005	1,002	989

Table 68

Enrollment Projection Assuming Future Fertility Rates Remain Constant (through 2021)
and that Housing Turnover and Resulting In-Migration of Families with Preschool Age and School Age Children
Are Greater than Anticipated through 2026–27

Julian Middle School

<i>Series C Projection</i>											
Grade	2016–17	2017–18	2018–19	2019–20	2020–21	2021–22	2022–23	2023–24	2024–25	2025–26	2026–27
6	329	323	354	332	323	358	374	396	394	390	383
7	327	343	337	368	346	337	372	388	410	408	404
8	324	328	344	338	369	347	338	373	389	411	409
6–8	980	994	1,035	1,038	1,038	1,042	1,084	1,157	1,193	1,209	1,196
Sp. Ed.	24	30	31	31	31	31	32	35	36	36	36
Total	1,004	1,024	1,066	1,069	1,069	1,073	1,116	1,192	1,229	1,245	1,232

Table 69

Enrollment Projection Assuming Future Fertility Rates Remain Constant (through 2021)
and that Housing Turnover and Resulting In-Migration of Families with Preschool Age and School Age Children
Are Less than Anticipated through 2026–27

Oak Park Elementary School District 97

<i>Series A Projection</i>											
Grade	2016–17	2017–18	2018–19	2019–20	2020–21	2021–22	2022–23	2023–24	2024–25	2025–26	2026–27
K	620	585	588	578	583	590	576	581	589	579	581
1	650	653	618	621	611	616	623	609	614	622	612
2	636	645	648	613	616	606	611	618	604	609	617
3	614	633	642	645	610	613	603	608	615	601	606
4	644	611	630	639	642	607	610	600	605	612	598
5	624	645	612	631	640	643	608	611	601	606	613
6	624	607	628	595	614	623	626	591	594	584	589
7	654	630	613	634	601	620	629	632	597	600	590
8	654	647	623	606	627	594	613	622	625	590	593
K–5	3,788	3,772	3,738	3,727	3,702	3,675	3,631	3,627	3,628	3,629	3,627
6–8	1,932	1,884	1,864	1,835	1,842	1,837	1,868	1,845	1,816	1,774	1,772
K–8	5,720	5,656	5,602	5,562	5,544	5,512	5,499	5,472	5,444	5,403	5,399
PK	177	159	157	158	160	156	157	160	157	157	157
Sp. Ed.	168	161	159	158	158	157	157	156	155	154	154
Total	6,065	5,976	5,918	5,878	5,862	5,825	5,813	5,788	5,756	5,714	5,710

Table 70

Enrollment Projection Assuming Future Fertility Rates Remain Constant (through 2021)
and that Housing Turnover and Resulting In-Migration of Families with Preschool Age and School Age Children
Occur As Anticipated through 2026–27

Oak Park Elementary School District 97

<i>Series B Projection</i>											
Grade	2016–17	2017–18	2018–19	2019–20	2020–21	2021–22	2022–23	2023–24	2024–25	2025–26	2026–27
K	620	612	614	603	608	618	596	603	619	614	623
1	650	664	656	658	647	652	662	640	647	663	658
2	636	650	664	656	658	647	652	662	640	647	663
3	614	639	653	667	659	661	650	655	665	643	650
4	644	616	641	655	669	661	663	652	657	667	645
5	624	650	622	647	661	675	667	669	658	663	673
6	624	618	644	616	641	655	669	661	663	652	657
7	654	642	636	662	634	659	673	687	679	681	670
8	654	652	640	634	660	632	657	671	685	677	679
K–5	3,788	3,831	3,850	3,886	3,902	3,914	3,890	3,881	3,886	3,897	3,912
6–8	1,932	1,912	1,920	1,912	1,935	1,946	1,999	2,019	2,027	2,010	2,006
K–8	5,720	5,743	5,770	5,798	5,837	5,860	5,889	5,900	5,913	5,907	5,918
PK	177	175	171	173	176	170	171	176	175	177	176
Sp. Ed.	168	170	171	171	173	173	174	175	175	175	175
Total	6,065	6,088	6,112	6,142	6,186	6,203	6,234	6,251	6,263	6,259	6,269

Table 71

Enrollment Projection Assuming Future Fertility Rates Remain Constant (through 2021)
and that Housing Turnover and Resulting In-Migration of Families with Preschool Age and School Age Children
Are Greater than Anticipated through 2026–27

Oak Park Elementary School District 97

<i>Series C Projection</i>											
Grade	2016–17	2017–18	2018–19	2019–20	2020–21	2021–22	2022–23	2023–24	2024–25	2025–26	2026–27
K	620	636	641	631	637	648	632	640	657	653	662
1	650	676	692	697	687	693	704	688	696	713	709
2	636	655	681	697	702	692	698	709	693	701	718
3	614	644	663	689	705	710	700	706	717	701	709
4	644	621	651	670	696	712	717	707	713	724	708
5	624	655	632	662	681	707	723	728	718	724	735
6	624	629	660	637	667	686	712	728	733	723	729
7	654	651	656	687	664	694	713	739	755	760	750
8	654	658	655	660	691	668	698	717	743	759	764
K–5	3,788	3,887	3,960	4,046	4,108	4,162	4,174	4,178	4,194	4,216	4,241
6–8	1,932	1,938	1,971	1,984	2,022	2,048	2,123	2,184	2,231	2,242	2,243
K–8	5,720	5,825	5,931	6,030	6,130	6,210	6,297	6,362	6,425	6,458	6,484
PK	177	183	181	182	185	181	183	188	187	189	188
Sp. Ed.	168	180	183	186	189	192	195	197	199	200	201
Total	6,065	6,188	6,295	6,398	6,504	6,583	6,675	6,747	6,811	6,847	6,873

Appendix A

Enrollment Histories of District 97 Schools

Beye Elementary School

School Year	K	1	2	3	4	5	6	7	8	K-8	Sp Ed	PS & PKP	Total
1971-72	39	63	50	65	53	63	73	67	69	542	7		549
1972-73	35	43	69	52	77	59	70	74	69	548	8		556
1973-74	43	47	45	65	55	79	62	71	77	544	5		549
1974-75	39	48	50	42	68	51	81	65	66	510	5		515
1975-76	49	43	41	53	47	69	53	76	70	501	8		509
1976-77	36	59	89	68	73	71	94	—	—	490			490
1977-78	33	67	59	88	73	73	74	—	—	467			467
1978-79	49	69	61	63	87	69	74	—	—	472			472
1979-80	50	53	64	62	74	83	73	—	—	459			459
1980-81	54	50	45	65	59	77	75	—	—	425			425
1981-82	46	52	51	42	64	60	68	—	—	383			383
1982-83	49	59	44	48	46	63	57	—	—	366			366
1983-84	50	54	49	45	61	51	66	—	—	376	7		383
1984-85	50	48	53	47	41	60	53	—	—	352	6		358
1985-86	47	66	51	66	46	53	58	—	—	387	6		393
1986-87	50	53	66	52	67	51	52	—	—	391	10		401
1987-88	50	66	51	63	61	72	52	—	—	415	8		423
1988-89	58	67	68	55	63	61	74	—	—	446	4		450
1989-90	49	75	62	76	58	66	62	—	—	448	6		454
1990-91	57	63	78	55	74	56	67	—	—	450	4		454
1991-92	66	79	71	80	49	76	62	—	—	483	5		488
1992-93	78	75	76	65	79	53	68	—	—	494	8		502
1993-94	53	93	72	74	63	77	58	—	—	490	6		496
1994-95	59	67	94	74	83	63	74	—	—	514	9		523
1995-96	66	65	67	96	81	78	68	—	—	521	6		527
1996-97	59	79	72	70	97	85	73	—	—	535	5		540
1997-98	N/A	N/A	N/A	N/A	N/A	N/A	N/A	—	—	N/A	N/A	N/A	N/A
1998-99	N/A	N/A	N/A	N/A	N/A	N/A	N/A	—	—	N/A	N/A	N/A	N/A
1999-00	N/A	N/A	N/A	N/A	N/A	N/A	N/A	—	—	N/A	N/A	N/A	N/A
2000-01	N/A	N/A	N/A	N/A	N/A	N/A	N/A	—	—	N/A	N/A	N/A	N/A
2001-02	N/A	N/A	N/A	N/A	N/A	N/A	N/A	—	—	N/A	N/A	N/A	N/A
2002-03	53	61	52	73	59	61	—	—	—	359			359
2003-04	58	69	60	57	68	58	—	—	—	370			370
2004-05	51	60	71	62	64	75	—	—	—	383			383
2005-06	56	64	62	70	68	70	—	—	—	390			390
2006-07	62	61	68	61	68	70	—	—	—	390	16		406
2007-08	51	58	61	68	58	75	—	—	—	371	14		385
2008-09	64	62	60	63	69	62	—	—	—	380	18		398
2009-10	59	69	71	61	63	66	—	—	—	389	22		411
2010-11	72	68	68	67	66	64	—	—	—	405	30		435
2011-12	46	80	69	69	67	72	—	—	—	403	26		429
2012-13	70	59	80	73	68	71	—	—	—	421	19		440
2013-14	40	72	65	83	71	69	—	—	—	400	17		417
2014-15	64	42	68	60	84	65	—	—	—	383	16		399
2015-16	61	60	49	68	57	82	—	—	—	377	21		398
2016-17	51	64	57	52	72	60	—	—	—	356	16		372

Hatch Elementary School

School Year	K	1	2	3	4	5	6	7	8	K-8	Sp Ed	PS & PKP	Total
1971-72	45	52	58	55	50	65	52	64	60	501	13		514
1972-73	46	41	59	58	54	53	63	54	62	490			490
1973-74	38	45	41	59	64	55	54	67	58	481			481
1974-75	48	46	49	45	68	66	54	57	66	499			499
1975-76	48	50	46	56	47	70	68	59	54	498			498
1976-77	50	54	55	46	56	42	67	—	—	370	7		377
1977-78	36	55	59	56	50	57	44	—	—	357	10		367
1978-79	39	38	57	57	57	49	56	—	—	353	11		364
1979-80	31	44	38	52	57	51	45	—	—	318	15		333
1980-81	48	41	48	40	50	56	50	—	—	333	22		355
1981-82	42	53	46	46	42	52	59	—	—	340	23		363
1982-83	45	44	54	45	46	39	52	—	—	325	26		351
1983-84	51	54	45	51	39	42	37	—	—	319	16		335
1984-85	50	54	50	39	44	38	41	—	—	316	18		334
1985-86	58	52	60	48	44	50	43	—	—	355	14		369
1986-87	35	65	53	57	43	51	45	—	—	349	18		367
1987-88	50	55	58	52	56	48	50	—	—	369	14		383
1988-89	45	51	53	54	52	57	44	—	—	356	23		379
1989-90	39	56	54	52	54	50	54	—	—	359	23		382
1990-91	42	45	55	55	49	58	47	—	—	351	28		379
1991-92	41	48	48	57	58	57	61	—	—	370	22		392
1992-93	48	51	50	49	56	57	61	—	—	372	7		379
1993-94	46	49	45	51	44	61	52	—	—	348	9		357
1994-95	50	51	50	41	53	42	58	—	—	345	10		355
1995-96	38	51	54	44	42	53	43	—	—	325	13		338
1996-97	44	41	45	43	42	47	46	—	—	308	10		318
1997-98	N/A	N/A	N/A	N/A	N/A	N/A	N/A	N/A	N/A	N/A	N/A	N/A	N/A
1998-99	N/A	N/A	N/A	N/A	N/A	N/A	N/A	N/A	N/A	N/A	N/A	N/A	N/A
1999-00	N/A	N/A	N/A	N/A	N/A	N/A	N/A	N/A	N/A	N/A	N/A	N/A	N/A
2000-01	N/A	N/A	N/A	N/A	N/A	N/A	N/A	N/A	N/A	N/A	N/A	N/A	N/A
2001-02	N/A	N/A	N/A	N/A	N/A	N/A	N/A	N/A	N/A	N/A	N/A	N/A	N/A
2002-03	32	41	49	47	49	42	—	—	—	260			260
2003-04	36	33	41	47	40	52	—	—	—	249			249
2004-05	30	36	35	41	45	37	—	—	—	224			224
2005-06	35	40	39	37	33	46	—	—	—	230			230
2006-07	52	38	42	38	31	38	—	—	—	239			239
2007-08	49	54	42	44	38	29	—	—	—	256			256
2008-09	53	59	55	39	45	40	—	—	—	291			291
2009-10	58	56	55	61	42	43	—	—	—	315			315
2010-11	52	61	55	54	56	42	—	—	—	320			320
2011-12	56	49	62	51	51	54	—	—	—	323			323
2012-13	48	54	53	61	62	53	—	—	—	331			331
2013-14	45	47	54	51	63	63	—	—	—	323			323
2014-15	63	47	47	53	50	61	—	—	—	321			321
2015-16	54	75	50	47	51	48	—	—	—	325			325
2016-17	58	58	77	51	46	52	—	—	—	342			342

Holmes Elementary School

School Year	K	1	2	3	4	5	6	7	8	K-8	Sp Ed	PS & PKP	Total
1971-72	37	56	59	48	50	63	61	62	62	498	41		539
1972-73	40	43	51	60	49	53	64	60	60	480	34		514
1973-74	36	38	40	50	61	52	47	68	58	450	38		488
1974-75	47	42	38	36	42	52	51	55	62	425	31		456
1975-76	54	41	44	38	40	44	46	51	58	416	33		449
1976-77	46	79	68	75	60	59	84	—	—	471	26		497
1977-78	45	61	88	65	73	62	59	—	—	453	20		473
1978-79	51	56	69	82	69	75	67	—	—	469	24		493
1979-80	49	59	54	63	82	68	74	—	—	449	10		459
1980-81	40	53	60	55	58	78	73	—	—	417	24		441
1981-82	44	48	50	51	45	55	77	—	—	370	29		399
1982-83	38	50	42	58	61	53	42	—	—	344	34		378
1983-84	44	40	48	46	53	54	47	—	—	332	45		377
1984-85	50	57	38	49	41	53	54	—	—	342	40		382
1985-86	45	58	62	42	46	44	57	—	—	354	41		395
1986-87	49	60	56	60	47	44	44	—	—	360	35		395
1987-88	55	47	63	54	56	42	47	—	—	364	34		398
1988-89	42	67	48	56	58	59	51	—	—	381	28		409
1989-90	56	52	62	58	60	61	65	—	—	414	28		442
1990-91	61	68	61	62	66	63	63	—	—	444	30		474
1991-92	67	63	69	59	59	69	66	—	—	452	32		484
1992-93	61	77	66	71	61	72	70	—	—	478	13		491
1993-94	53	79	82	83	70	63	72	—	—	502	10		512
1994-95	76	69	75	86	84	74	65	—	—	529	11		540
1995-96	75	76	66	82	88	88	82	—	—	557	14		571
1996-97	61	85	77	70	76	88	75	—	—	532	21		553
1997-98	N/A	N/A	N/A	N/A	N/A	N/A	N/A	N/A	N/A	N/A	N/A	N/A	N/A
1998-99	N/A	N/A	N/A	N/A	N/A	N/A	N/A	N/A	N/A	N/A	N/A	N/A	N/A
1999-00	N/A	N/A	N/A	N/A	N/A	N/A	N/A	N/A	N/A	N/A	N/A	N/A	N/A
2000-01	N/A	N/A	N/A	N/A	N/A	N/A	N/A	N/A	N/A	N/A	N/A	N/A	N/A
2001-02	N/A	N/A	N/A	N/A	N/A	N/A	N/A	N/A	N/A	N/A	N/A	N/A	N/A
2002-03	54	65	69	64	67	73	—	—	—	392		17	409
2003-04	61	58	65	69	65	66	—	—	—	384		74	458
2004-05	57	70	61	62	70	69	—	—	—	389		12	401
2005-06	58	68	70	66	72	70	—	—	—	404	196		600
2006-07	55	77	65	66	72	68	—	—	—	403	33		436
2007-08	67	67	75	70	69	74	—	—	—	422	27		449
2008-09	63	69	67	79	71	70	—	—	—	419	32		451
2009-10	74	75	79	71	81	76	—	—	—	456	34		490
2010-11	60	80	75	84	67	81	—	—	—	447	26		473
2011-12	76	68	87	79	95	68	—	—	—	473	9	15	497
2012-13	86	85	73	81	83	90	—	—	—	498		31	529
2013-14	80	94	80	86	88	97	—	—	—	525	5	20	550
2014-15	85	80	90	76	83	95	—	—	—	509	7		516
2015-16	101	94	76	87	73	80	—	—	—	511	4		515
2016-17	85	107	101	88	84	80	—	—	—	545	4		549

Irving Elementary School

School Year	K	1	2	3	4	5	6	7	8	K-8	Sp Ed	PS & PKP	Total
1971-72	64	71	61	72	64	51	56	64	40	543			543
1972-73	67	60	67	63	71	74	60	58	62	582			582
1973-74	82	68	56	64	66	70	83	64	61	614			614
1974-75	71	79	73	63	67	62	73	81	55	624			624
1975-76	63	75	84	75	62	79	65	72	82	657			657
1976-77	78	74	83	87	79	71	78	—	—	550			550
1977-78	72	93	83	134	82	78	74	—	—	616			616
1978-79	54	75	89	73	71	76	79	—	—	517			517
1979-80	50	53	59	90	62	69	66	—	—	449	9		458
1980-81	33	55	45	61	85	62	74	—	—	415	8		423
1981-82	46	45	54	51	60	82	60	—	—	398	9		407
1982-83	45	61	37	54	50	61	62	—	—	370	10		380
1983-84	51	46	55	40	49	47	60	—	—	348	13		361
1984-85	51	53	50	53	39	44	53	—	—	343	15		358
1985-86	43	59	56	51	54	39	40	—	—	342	12		354
1986-87	36	55	53	54	48	58	39	—	—	343	12		355
1987-88	46	39	54	52	56	48	67	—	—	362	11		373
1988-89	43	61	47	59	58	68	52	—	—	388	10		398
1989-90	55	55	56	44	60	55	62	—	—	387	12		399
1990-91	55	58	55	60	38	62	51	—	—	379	24		403
1991-92	64	60	52	61	64	43	62	—	—	406	25		431
1992-93	58	74	59	56	55	65	43	—	—	410	20	29	459
1993-94	66	65	75	66	53	49	65	—	—	439	27	23	489
1994-95	66	63	58	75	64	57	54	—	—	437	18	32	487
1995-96	63	75	66	55	66	65	53	—	—	443	28	21	492
1996-97	58	65	80	71	53	68	64	—	—	459	35	18	512
1997-98	N/A	N/A	N/A	N/A	N/A	N/A	N/A	N/A	N/A	N/A	N/A	N/A	N/A
1998-99	N/A	N/A	N/A	N/A	N/A	N/A	N/A	N/A	N/A	N/A	N/A	N/A	N/A
1999-00	N/A	N/A	N/A	N/A	N/A	N/A	N/A	N/A	N/A	N/A	N/A	N/A	N/A
2000-01	N/A	N/A	N/A	N/A	N/A	N/A	N/A	N/A	N/A	N/A	N/A	N/A	N/A
2001-02	N/A	N/A	N/A	N/A	N/A	N/A	N/A	N/A	N/A	N/A	N/A	N/A	N/A
2002-03	51	58	56	67	63	64	—	—	—	359			359
2003-04	49	69	62	50	69	62	—	—	—	361			361
2004-05	51	60	67	61	51	66	—	—	—	356			356
2005-06	51	59	64	60	61	46	—	—	—	341			341
2006-07	59	62	55	55	51	58	—	—	—	340	21		361
2007-08	51	57	51	54	54	60	—	—	—	327	28		355
2008-09	56	68	68	59	59	55	—	—	—	365	22		387
2009-10	77	66	65	70	61	61	—	—	—	400	19		419
2010-11	80	79	67	63	68	63	—	—	—	420	23		443
2011-12	83	85	76	69	61	69	—	—	—	443	21		464
2012-13	90	79	93	76	72	66	—	—	—	476	22		498
2013-14	63	92	83	95	74	74	—	—	—	481	21		502
2014-15	64	68	96	88	91	79	—	—	—	486	22		508
2015-16	69	66	67	97	84	90	—	—	—	473	20		493
2016-17	76	74	68	68	95	82	—	—	—	463	23		486

Lincoln Elementary School

School Year	K	1	2	3	4	5	6	7	8	K-8	Sp Ed	PS & PKP	Total
1971-72	92	65	97	75	92	92	74	83	64	734			734
1972-73	85	85	69	97	92	91	83	71	79	752			752
1973-74	83	80	79	69	96	88	94	85	68	742			742
1974-75	76	69	68	76	61	85	85	87	83	690			690
1975-76	73	76	62	68	66	57	82	84	81	649			649
1976-77	94	110	107	92	98	103	109	—	—	713			713
1977-78	55	112	97	49	96	96	98	—	—	603			603
1978-79	71	73	109	99	95	95	89	—	—	631			631
1979-80	88	74	76	100	89	92	88	—	—	607	10		617
1980-81	88	90	61	75	98	83	88	—	—	583	13		596
1981-82	79	86	76	65	73	94	83	—	—	556	12		568
1982-83	61	84	89	80	69	77	103	—	—	563	11		574
1983-84	80	74	95	87	83	76	79	—	—	574	19		593
1984-85	85	92	75	94	88	77	72	—	—	583	16		599
1985-86	91	84	85	77	95	89	85	—	—	606	17		623
1986-87	90	95	92	89	80	93	95	—	—	634	15		649
1987-88	65	95	86	98	82	76	89	—	—	591	14		605
1988-89	95	80	102	92	101	82	82	—	—	634	16		650
1989-90	85	92	84	104	89	94	87	—	—	635	15		650
1990-91	92	92	86	90	99	98	93	—	—	650	15		665
1991-92	85	111	92	88	85	97	93	—	—	651	13		664
1992-93	72	95	111	89	91	86	91	—	—	635	17		652
1993-94	86	83	98	104	92	92	86	—	—	641	17		658
1994-95	85	92	82	104	113	90	87	—	—	653	14		667
1995-96	70	96	96	78	99	119	90	—	—	648	21		669
1996-97	61	89	101	96	84	97	107	—	—	635	21		656
1997-98	N/A	N/A	N/A	N/A	N/A	N/A	N/A	N/A	N/A	N/A	N/A	N/A	N/A
1998-99	N/A	N/A	N/A	N/A	N/A	N/A	N/A	N/A	N/A	N/A	N/A	N/A	N/A
1999-00	N/A	N/A	N/A	N/A	N/A	N/A	N/A	N/A	N/A	N/A	N/A	N/A	N/A
2000-01	N/A	N/A	N/A	N/A	N/A	N/A	N/A	N/A	N/A	N/A	N/A	N/A	N/A
2001-02	N/A	N/A	N/A	N/A	N/A	N/A	N/A	N/A	N/A	N/A	N/A	N/A	N/A
2002-03	72	91	89	85	97	95	—	—	—	529			529
2003-04	79	82	90	93	84	88	—	—	—	516			516
2004-05	85	99	84	97	100	91	—	—	—	556			556
2005-06	75	92	97	87	104	4	—	—	—	459			459
2006-07	68	81	74	64	69	72	—	—	—	428	27		455
2007-08	56	78	79	93	98	80	—	—	—	484	25		509
2008-09	84	68	78	86	92	98	—	—	—	506	22		528
2009-10	112	99	67	88	86	91	—	—	—	543	26		569
2010-11	99	118	100	69	86	87	—	—	—	559	25		584
2011-12	83	96	117	99	65	80	—	—	—	540	24		564
2012-13	102	96	96	114	100	69	—	—	—	577	25		602
2013-14	102	109	98	95	112	97	—	—	—	613	23		636
2014-15	104	113	110	97	97	115	—	—	—	636	16		652
2015-16	86	112	107	108	109	99	—	—	—	621	17		638
2016-17	118	110	105	110	106	106	—	—	—	655	16		671

Longfellow Elementary School

School Year	K	1	2	3	4	5	6	7	8	K-8	Sp Ed	PS & PKP	Total
1971-72	100	97	88	90	109	90	87	65	85	811			811
1972-73	84	94	103	83	94	103	94	94	66	815			815
1973-74	77	82	100	109	88	97	96	100	100	849			849
1974-75	86	76	88	97	106	89	96	106	102	846			846
1975-76	85	91	77	94	103	100	101	99	116	866			866
1976-77	85	115	132	102	110	119	125	—	—	788			788
1977-78	75	111	123	125	98	112	113	—	—	757			757
1978-79	75	95	113	109	119	90	100	—	—	701			701
1979-80	77	87	75	105	98	122	88	—	—	652	10		662
1980-81	78	82	85	81	99	107	124	—	—	656	14		670
1981-82	75	90	90	77	75	96	100	—	—	603	15		618
1982-83	91	98	88	97	63	79	95	—	—	611	13		624
1983-84	120	106	85	93	96	82	79	—	—	661	11		672
1984-85	64	118	99	84	84	87	81	—	—	617	11		628
1985-86	83	80	113	99	87	86	85	—	—	633	10		643
1986-87	71	99	78	114	98	87	95	—	—	642	10		652
1987-88	91	83	86	75	106	85	76	—	—	602	13		615
1988-89	64	93	89	94	84	115	91	—	—	630	11		641
1989-90	78	69	91	84	85	83	113	—	—	603	14		617
1990-91	88	86	66	91	76	87	83	—	—	577	12		589
1991-92	65	100	87	64	87	81	88	—	—	572	19		591
1992-93	74	80	91	97	70	84	89	—	—	585	19	51	655
1993-94	70	86	77	94	101	66	91	—	—	585	15	56	656
1994-95	87	87	89	78	89	96	73	—	—	599	17	45	661
1995-96	87	90	84	82	71	88	95	—	—	597	18	53	668
1996-97	70	95	84	81	88	74	93	—	—	585	17	60	662
1997-98	N/A	N/A	N/A	N/A	N/A	N/A	N/A	N/A	N/A	N/A	N/A	N/A	N/A
1998-99	N/A	N/A	N/A	N/A	N/A	N/A	N/A	N/A	N/A	N/A	N/A	N/A	N/A
1999-00	N/A	N/A	N/A	N/A	N/A	N/A	N/A	N/A	N/A	N/A	N/A	N/A	N/A
2000-01	N/A	N/A	N/A	N/A	N/A	N/A	N/A	N/A	N/A	N/A	N/A	N/A	N/A
2001-02	N/A	N/A	N/A	N/A	N/A	N/A	N/A	N/A	N/A	N/A	N/A	N/A	N/A
2002-03	59	77	85	74	60	85	—	—	—	440			440
2003-04	63	72	74	80	76	60	—	—	—	425			425
2004-05	68	69	72	75	77	81	—	—	—	442		79	521
2005-06	70	75	72	77	68	77	—	—	—	439		79	518
2006-07	68	81	74	64	69	72	—	—	—	428	23	79	530
2007-08	65	83	87	75	64	70	—	—	—	444	24	80	548
2008-09	87	75	87	84	77	66	—	—	—	476	20	105	601
2009-10	70	92	75	85	96	74	—	—	—	492	23	119	634
2010-11	88	74	90	70	82	100	—	—	—	504	17	120	641
2011-12	90	96	80	96	79	85	—	—	—	526	17	120	663
2012-13	84	94	91	77	105	76	—	—	—	527	22	117	666
2013-14	101	92	95	93	79	100	—	—	—	560	17	116	693
2014-15	76	111	96	99	94	88	—	—	—	564	22	118	704
2015-16	91	85	110	96	103	88	—	—	—	573	17	120	710
2016-17	97	99	91	108	98	106	—	—	—	599	19	119	737

Mann Elementary School

School Year	K	1	2	3	4	5	6	7	8	K-8	Sp Ed	PS & PKP	Total
1971-72	44	46	45	64	61	57	64	63	74	518			518
1972-73	35	46	51	53	69	67	58	67	62	508			508
1973-74	57	44	45	61	53	74	72	61	71	538			538
1974-75	41	66	52	51	61	61	76	75	59	542			542
1975-76	52	45	55	53	54	61	62	81	72	535			535
1976-77	65	75	70	71	70	63	63	—	—	477			477
1977-78	52	62	70	66	67	58	65	—	—	440			440
1978-79	61	52	64	70	56	65	56	—	—	424			424
1979-80	48	56	54	59	72	50	62	—	—	401			401
1980-81	52	45	57	47	56	75	49	—	—	381	2		383
1981-82	42	51	46	55	49	54	73	—	—	370	3		373
1982-83	50	42	53	50	64	49	62	—	—	370	9		379
1983-84	52	58	41	51	52	65	45	—	—	364	9		373
1984-85	43	52	48	52	54	51	62	—	—	362	8		370
1985-86	45	53	54	58	40	53	51	—	—	354	6		360
1986-87	60	48	55	55	59	41	51	—	—	369	6		375
1987-88	50	68	51	53	55	61	38	—	—	376	8		384
1988-89	65	57	67	55	53	57	57	—	—	411	7		418
1989-90	45	69	54	66	47	49	56	—	—	386	5		391
1990-91	59	46	65	58	65	46	51	—	—	390	14		404
1991-92	76	61	48	61	59	58	46	—	—	409	19		428
1992-93	67	73	64	43	56	58	56	—	—	417	10		427
1993-94	64	72	77	65	48	53	57	—	—	436	9		445
1994-95	72	67	73	76	62	49	55	—	—	454	9		463
1995-96	69	83	67	74	71	63	48	—	—	475	12		487
1996-97	77	71	82	65	75	73	66	—	—	509	10		519
1997-98	N/A	N/A	N/A	N/A	N/A	N/A	N/A	N/A	N/A	N/A	N/A	N/A	N/A
1998-99	N/A	N/A	N/A	N/A	N/A	N/A	N/A	N/A	N/A	N/A	N/A	N/A	N/A
1999-00	N/A	N/A	N/A	N/A	N/A	N/A	N/A	N/A	N/A	N/A	N/A	N/A	N/A
2000-01	N/A	N/A	N/A	N/A	N/A	N/A	N/A	N/A	N/A	N/A	N/A	N/A	N/A
2001-02	N/A	N/A	N/A	N/A	N/A	N/A	N/A	N/A	N/A	N/A	N/A	N/A	N/A
2002-03	63	79	69	63	85	61	—	—	—	420			420
2003-04	60	70	79	80	71	83	—	—	—	443			443
2004-05	76	69	73	77	77	67	—	—	—	439			439
2005-06	72	82	73	78	79	77	—	—	—	461			461
2006-07	70	75	79	73	69	77	—	—	—	443			443
2007-08	77	77	80	74	77	68	—	—	—	453			453
2008-09	86	89	82	82	71	72	—	—	—	482			482
2009-10	95	91	89	79	76	71	—	—	—	501			501
2010-11	87	99	87	88	81	70	—	—	—	512			512
2011-12	72	86	95	88	88	79	—	—	—	508			508
2012-13	69	74	85	95	89	92	—	—	—	504			504
2013-14	86	80	77	88	92	90	—	—	—	513			513
2014-15	68	86	72	73	80	92	—	—	—	471			471
2015-16	72	76	86	72	71	77	—	—	—	454			454
2016-17	77	74	73	83	77	73	—	—	—	457			457

Whittier Elementary School

School Year	K	1	2	3	4	5	6	7	8	K-8	Sp Ed	PS & PKP	Total
1971-72	66	64	61	56	56	66	64	58	66	557	30		587
1972-73	51	63	65	65	62	58	64	64	63	555	22		577
1973-74	57	53	65	62	74	63	61	67	65	567	28		595
1974-75	64	53	50	66	63	75	65	64	69	569	22		591
1975-76	52	64	59	52	65	71	81	71	62	577	21		598
1976-77	67	70	77	66	66	80	84	—	—	510	19		529
1977-78	52	74	70	77	63	62	77	—	—	475	23		498
1978-79	44	46	68	74	74	59	62	—	—	427	30		457
1979-80	53	50	44	68	75	77	56	—	—	423	12		435
1980-81	46	60	49	45	72	80	75	—	—	427	15		442
1981-82	51	38	61	51	44	75	77	—	—	397	30		427
1982-83	42	54	36	56	52	40	70	—	—	350	53		403
1983-84	47	59	50	38	57	55	43	—	—	349	38		387
1984-85	53	52	66	53	40	56	52	—	—	372	36		408
1985-86	53	67	51	65	44	47	54	—	—	381	42		423
1986-87	58	61	63	47	67	48	48	—	—	392	35		427
1987-88	48	59	49	54	37	60	46	—	—	353	37		390
1988-89	57	48	63	50	53	41	63	—	—	375	42		417
1989-90	55	55	46	69	52	54	39	—	—	370	40		410
1990-91	61	56	61	40	63	53	51	—	—	385	44		429
1991-92	81	52	56	60	41	67	51	—	—	408	50		458
1992-93	54	88	58	58	65	40	60	—	—	423	56	20	499
1993-94	60	63	85	52	56	64	40	—	—	420	48	27	495
1994-95	75	67	71	80	52	48	61	—	—	454	43	20	517
1995-96	48	82	74	65	82	43	47	—	—	441	49	25	515
1996-97	63	64	78	75	72	82	50	—	—	484	37		521
1997-98	N/A	N/A	N/A	N/A	N/A	N/A	N/A	N/A	N/A	N/A	N/A	N/A	N/A
1998-99	N/A	N/A	N/A	N/A	N/A	N/A	N/A	N/A	N/A	N/A	N/A	N/A	N/A
1999-00	N/A	N/A	N/A	N/A	N/A	N/A	N/A	N/A	N/A	N/A	N/A	N/A	N/A
2000-01	N/A	N/A	N/A	N/A	N/A	N/A	N/A	N/A	N/A	N/A	N/A	N/A	N/A
2001-02	N/A	N/A	N/A	N/A	N/A	N/A	N/A	N/A	N/A	N/A	N/A	N/A	N/A
2002-03	50	69	76	62	57	65	—	—	—	379		32	411
2003-04	55	63	64	72	66	57	—	—	—	377		43	420
2004-05	60	61	62	68	70	67	—	—	—	388		35	423
2005-06	72	68	55	56	71	68	—	—	—	390	37		427
2006-07	67	71	62	54	49	73	—	—	—	376	86		462
2007-08	59	69	68	52	48	47	—	—	—	343	77		420
2008-09	72	63	66	72	53	48	—	—	—	374	20		394
2009-10	65	68	56	69	67	49	—	—	—	374	62		436
2010-11	59	66	71	58	69	66	—	—	—	389	61		450
2011-12	61	59	63	61	54	68	—	—	—	366	29	31	426
2012-13	60	72	58	65	62	53	—	—	—	370	27	29	426
2013-14	47	62	66	56	58	66	—	—	—	355	31	28	414
2014-15	68	50	64	64	61	58	—	—	—	365	25	44	434
2015-16	57	68	52	67	66	64	—	—	—	374	25	53	452
2016-17	58	64	64	54	66	65	—	—	—	371	28	58	457

Brooks Middle School

School Year	K	1	2	3	4	5	6	7	8	K-8	Sp Ed	PS & PKP	Total
1971-72	69	78	81	100	83	80	73	74	88	726			726
1972-73	58	61	81	78	92	79	80	68	74	671	21		692
1973-74	75	64	61	76	82	96	78	82	71	685	3		688
1974-75	86	66	66	59	78	80	92	73	79	679	8		687
1975-76	74	82	76	58	54	83	81	86	83	677	7		684
1976-77	34	—	—	—	—	—	—	356	365	755	9		764
1977-78	32	—	—	—	—	—	—	323	340	695	15		710
1978-79	—	—	—	—	—	—	—	264	309	573	14	—	587
1979-80	—	—	—	—	—	—	—	273	261	534	14	—	548
1980-81	—	—	—	—	—	—	—	254	273	527	20	—	547
1981-82	—	—	—	—	—	—	—	275	255	530	23	—	553
1982-83	—	—	—	—	—	—	—	279	274	553	27	—	580
1983-84	—	—	—	—	—	—	—	270	279	549	26	—	575
1984-85	—	—	—	—	—	—	—	200	267	467	22	—	489
1985-86	—	—	—	—	—	—	—	218	212	430	17	—	447
1986-87	—	—	—	—	—	—	—	217	215	432	14	—	446
1987-88	—	—	—	—	—	—	—	227	200	427	17	—	444
1988-89	—	—	—	—	—	—	—	236	233	469	26	—	495
1989-90	—	—	—	—	—	—	—	264	223	487	22	—	509
1990-91	—	—	—	—	—	—	—	234	260	494	21	—	515
1991-92	—	—	—	—	—	—	—	255	223	478	28	—	506
1992-93	—	—	—	—	—	—	—	264	241	505	27	—	532
1993-94	—	—	—	—	—	—	—	258	243	501	27	—	528
1994-95	—	—	—	—	—	—	—	219	257	476	27	—	503
1995-96	—	—	—	—	—	—	—	269	227	496	31	—	527
1996-97	—	—	—	—	—	—	—	269	261	530	27	—	557
1997-98	N/A	N/A	N/A	N/A	N/A	N/A	N/A	N/A	N/A	N/A	N/A	N/A	N/A
1998-99	N/A	N/A	N/A	N/A	N/A	N/A	N/A	N/A	N/A	N/A	N/A	N/A	N/A
1999-00	N/A	N/A	N/A	N/A	N/A	N/A	N/A	N/A	N/A	N/A	N/A	N/A	N/A
2000-01	N/A	N/A	N/A	N/A	N/A	N/A	N/A	N/A	N/A	N/A	N/A	N/A	N/A
2001-02	N/A	N/A	N/A	N/A	N/A	N/A	N/A	N/A	N/A	N/A	N/A	N/A	N/A
2002-03	—	—	—	—	—	—	—	280	283	290	853		853
2003-04	—	—	—	—	—	—	—	289	286	279	854		854
2004-05	—	—	—	—	—	—	—	249	295	289	833		833
2005-06	—	—	—	—	—	—	—	241	250	291	782	—	782
2006-07	—	—	—	—	—	—	—	284	244	241	769	31	800
2007-08	—	—	—	—	—	—	—	273	276	241	790	31	821
2008-09	—	—	—	—	—	—	—	236	280	278	794	29	823
2009-10	—	—	—	—	—	—	—	260	246	285	791	33	824
2010-11	—	—	—	—	—	—	—	274	270	255	799	39	838
2011-12	—	—	—	—	—	—	—	282	276	275	833	42	875
2012-13	—	—	—	—	—	—	—	290	297	280	867	24	891
2013-14	—	—	—	—	—	—	—	227	306	301	834	15	849
2014-15	—	—	—	—	—	—	—	324	279	297	900	44	944
2015-16	—	—	—	—	—	—	—	319	324	281	924	38	962
2016-17	—	—	—	—	—	—	—	295	327	330	952	38	990

Julian Middle School

School Year	K	1	2	3	4	5	6	7	8	K-8	Sp Ed	PS & PKP	Total
1971-72	75	65	108	91	89	91	93	90	90	792			792
1972-73	76	71	76	100	86	105	94	103	79	790			790
1973-74	71	65	80	79	107	102	94	104	94	796			796
1974-75	86	80	70	79	84	102	105	87	91	784			784
1975-76	91	124	86	78	76	97	114	109	88	863			863
1976-77	47	—	—	—	—	—	—	391	395	833	10		843
1977-78	42	—	—	—	—	—	—	356	365	763	16		779
1978-79	—	—	—	—	—	—	—	324	342	666	15	—	681
1979-80	—	—	—	—	—	—	—	304	308	612	16	—	628
1980-81	—	—	—	—	—	—	—	290	303	593	25	—	618
1981-82	—	—	—	—	—	—	—	326	275	601	24	—	625
1982-83	—	—	—	—	—	—	—	326	331	657	28	—	685
1983-84	—	—	—	—	—	—	—	350	336	686	34	—	720
1984-85	—	—	—	—	—	—	—	250	336	586	35	—	621
1985-86	—	—	—	—	—	—	—	264	254	518	34	—	552
1986-87	—	—	—	—	—	—	—	272	269	541	39	—	580
1987-88	—	—	—	—	—	—	—	256	254	510	31	—	541
1988-89	—	—	—	—	—	—	—	251	271	522	19	—	541
1989-90	—	—	—	—	—	—	—	266	253	519	29	—	548
1990-91	—	—	—	—	—	—	—	310	263	573	39	—	612
1991-92	—	—	—	—	—	—	—	269	323	592	36	—	628
1992-93	—	—	—	—	—	—	—	275	276	551	43	—	594
1993-94	—	—	—	—	—	—	—	274	276	550	34	—	584
1994-95	—	—	—	—	—	—	—	276	275	551	28	—	579
1995-96	—	—	—	—	—	—	—	249	276	525	21	—	546
1996-97	—	—	—	—	—	—	—	261	236	497	24	—	521
1997-98	N/A	N/A	N/A	N/A	N/A	N/A	N/A	N/A	N/A	N/A	N/A	N/A	N/A
1998-99	N/A	N/A	N/A	N/A	N/A	N/A	N/A	N/A	N/A	N/A	N/A	N/A	N/A
1999-00	N/A	N/A	N/A	N/A	N/A	N/A	N/A	N/A	N/A	N/A	N/A	N/A	N/A
2000-01	N/A	N/A	N/A	N/A	N/A	N/A	N/A	N/A	N/A	N/A	N/A	N/A	N/A
2001-02	N/A	N/A	N/A	N/A	N/A	N/A	N/A	N/A	N/A	N/A	N/A	N/A	N/A
2002-03	—	—	—	—	—	—	283	289	309	881			881
2003-04	—	—	—	—	—	—	276	286	280	842			842
2004-05	—	—	—	—	—	—	270	279	281	830			830
2005-06	—	—	—	—	—	—	297	266	282	845		—	845
2006-07	—	—	—	—	—	—	260	265	253	778	44	—	822
2007-08	—	—	—	—	—	—	282	262	271	815	40	—	855
2008-09	—	—	—	—	—	—	281	293	263	837	41	—	878
2009-10	—	—	—	—	—	—	252	285	292	829	33	—	862
2010-11	—	—	—	—	—	—	282	243	293	818	40	—	858
2011-12	—	—	—	—	—	—	301	280	250	831	18	—	849
2012-13	—	—	—	—	—	—	303	309	289	901	33	—	934
2013-14	—	—	—	—	—	—	277	306	301	884	15	—	899
2014-15	—	—	—	—	—	—	331	305	301	937	29	—	966
2015-16	—	—	—	—	—	—	319	327	299	945	24	—	969
2016-17	—	—	—	—	—	—	329	327	324	980	24	—	1004

Appendix B

Racial/Ethnic Composition
of
District 97 Students

Beye Elementary School

Year	American Indian (%)	Asian (%)	Black (%)	Hispanic (%)	Pacific Islander (%)	White (%)	Two or More Races (%)
2016	0.0	3.1	22.7	12.3	0.0	49.3	12.6
2015	0.2	4.9	25.6	5.2	0.0	53.3	10.8
2014	0.0	5.3	26.3	4.1	0.2	53.7	10.5
2013	0.2	4.7	26.3	4.2	0.2	55.2	9.1
2012	0.2	4.7	25.2	4.2	0.0	55.6	10.0
2011	0.2	3.4	25.5	3.4	0.0	58.4	9.0
2010	0.0	3.9	26.5	2.9	—	56.9	9.8
2009	0.0	4.3	25.5	3.0	—	58.1	9.1
2008	0.0	4.9	26.1	2.1	—	58.4	8.5
2007	0.0	5.0	26.3	2.0	—	58.8	7.9
2006	0.0	3.1	30.5	1.8	—	58.2	6.4
2005	0.0	3.4	27.4	1.3	—	62.1	5.7
2004	0.0	1.9	28.9	2.2	—	67.0	—
2003	0.3	2.2	28.7	2.2	—	66.6	—
2002	0.0	2.0	29.7	8.5	—	59.8	—
2001	0.0	1.1	33.7	3.3	—	62.0	—
2000	0.0	1.3	35.4	2.7	—	60.6	—

Hatch Elementary School

Year	American Indian (%)	Asian (%)	Black (%)	Hispanic (%)	Pacific Islander (%)	White (%)	Two or More Races (%)
2016	0.0	4.0	23.0	9.1	0.0	51.1	12.8
2015	0.3	3.5	25.8	4.7	0.6	55.4	9.7
2014	0.3	3.1	31.1	3.1	0.6	52.4	9.5
2013	0.3	3.4	28.2	4.3	0.3	54.6	8.9
2012	0.3	3.2	22.5	3.5	0.3	60.2	9.9
2011	0.3	3.1	25.0	3.1	0.0	58.7	9.8
2010	0.3	2.5	26.4	2.5	—	57.2	11.0
2009	0.0	3.0	27.1	2.0	—	56.8	11.2
2008	0.0	3.1	29.0	1.9	—	53.3	12.7
2007	0.0	2.9	29.8	3.4	—	54.2	9.7
2006	0.4	3.0	34.3	3.5	—	49.6	9.1
2005	0.4	3.1	35.3	4.0	—	49.1	8.0
2004	0.0	3.6	44.6	2.8	—	49.0	—
2003	0.0	3.8	44.2	3.1	—	48.8	—
2002	0.4	2.5	43.1	8.5	—	45.6	—
2001	0.4	1.8	49.6	1.1	—	47.2	—
2000	0.4	0.8	48.8	0.4	—	49.6	—

Holmes Elementary School

Year	American Indian (%)	Asian (%)	Black (%)	Hispanic (%)	Pacific Islander (%)	White (%)	Two or More Races (%)
2016	0.2	7.4	19.4	12.7	0.0	47.4	12.9
2015	0.4	9.2	18.3	6.7	0.4	51.8	13.3
2014	0.5	8.4	21.9	6.6	0.4	49.8	12.5
2013	0.2	8.4	22.8	6.7	0.0	50.6	11.2
2012	0.0	9.7	25.3	5.3	0.0	49.2	10.5
2011	0.0	7.5	24.1	5.7	0.0	51.2	11.5
2010	0.0	6.9	23.6	3.9	—	52.5	13.3
2009	0.0	6.6	21.5	4.4	—	54.4	13.1
2008	0.0	6.8	22.2	4.8	—	56.5	9.8
2007	0.0	6.6	24.8	4.2	—	55.7	8.7
2006	0.0	6.7	25.0	5.2	—	54.5	8.6
2005	0.0	7.9	25.7	5.2	—	54.2	6.9
2004	0.0	7.9	24.7	5.7	—	61.8	—
2003	0.2	6.3	25.1	6.8	—	61.6	—
2002	0.0	8.5	22.8	10.4	—	58.4	—
2001	0.2	7.0	25.9	6.4	—	60.6	—
2000	0.0	4.8	28.4	5.6	—	61.1	—

Irving Elementary School

Year	American Indian (%)	Asian (%)	Black (%)	Hispanic (%)	Pacific Islander (%)	White (%)	Two or More Races (%)
2016	0.2	2.2	20.6	13.4	0.0	51.9	11.8
2015	0.4	2.7	23.0	9.1	0.2	51.6	13.0
2014	0.4	3.8	24.7	7.1	0.2	51.0	12.8
2013	0.2	4.1	28.0	7.3	0.0	48.8	11.6
2012	0.2	4.4	26.4	6.6	0.0	48.9	13.5
2011	0.2	4.5	29.0	7.5	0.0	45.6	13.1
2010	0.2	5.3	29.2	7.0	—	42.9	15.4
2009	0.0	5.2	32.0	6.3	—	41.5	15.0
2008	0.0	4.4	32.6	5.5	—	42.5	14.9
2007	0.0	2.3	35.9	4.0	—	43.2	14.7
2006	0.3	2.1	40.2	3.5	—	40.2	13.8
2005	0.3	2.0	43.3	4.2	—	37.4	12.9
2004	0.3	1.4	48.2	5.3	—	44.9	—
2003	0.3	1.9	47.4	4.5	—	46.0	—
2002	0.2	3.2	46.8	8.5	—	41.3	—
2001	0.2	4.4	49.4	4.2	—	41.8	—
2000	0.2	4.6	45.3	5.1	—	44.8	—

Lincoln Elementary School

Year	American Indian (%)	Asian (%)	Black (%)	Hispanic (%)	Pacific Islander (%)	White (%)	Two or More Races (%)
2016	0.0	5.0	13.7	14.7	0.0	58.0	8.5
2015	0.0	3.9	15.3	9.3	0.2	60.1	11.3
2014	0.3	4.8	14.3	9.4	0.3	59.2	11.8
2013	0.5	4.6	15.7	10.5	0.0	59.8	9.0
2012	0.5	6.9	15.3	7.9	0.0	59.5	10.0
2011	0.5	6.5	15.7	7.3	0.0	60.6	9.3
2010	0.2	6.7	17.2	5.7	—	60.0	10.1
2009	0.0	7.8	17.1	5.9	—	61.7	7.6
2008	0.0	6.2	18.6	4.2	—	63.6	7.4
2007	0.0	5.2	20.7	5.0	—	61.1	7.9
2006	0.0	5.2	21.6	5.2	—	59.2	8.8
2005	0.0	5.2	20.7	5.2	—	60.8	8.1
2004	0.0	5.2	24.6	5.4	—	64.7	—
2003	0.4	5.3	26.5	5.3	—	62.6	—
2002	0.0	5.7	23.6	10.7	—	60.0	—
2001	0.3	3.8	28.8	4.1	—	63.0	—
2000	0.3	2.8	28.7	4.3	—	63.9	—

Longfellow Elementary School

Year	American Indian (%)	Asian (%)	Black (%)	Hispanic (%)	Pacific Islander (%)	White (%)	Two or More Races (%)
2016	0.0	2.4	17.1	9.4	0.0	57.4	13.7
2015	0.0	3.8	20.8	5.1	0.1	57.9	12.3
2014	0.0	4.4	22.7	3.9	0.5	56.6	11.9
2013	0.0	4.3	21.7	5.5	0.3	56.4	11.8
2012	0.0	3.9	24.6	5.3	0.0	55.9	10.3
2011	0.0	3.7	29.1	5.3	0.0	52.2	9.8
2010	0.0	4.5	28.2	5.3	—	51.9	10.0
2009	0.0	5.0	29.3	3.8	—	52.3	9.6
2008	0.2	4.6	30.0	3.5	—	52.1	9.6
2007	0.0	3.4	33.5	4.3	—	49.9	8.9
2006	0.0	3.5	35.1	5.4	—	47.3	8.7
2005	0.0	3.8	35.7	6.7	—	46.3	7.5
2004	0.2	3.3	36.0	5.9	—	54.6	—
2003	0.5	3.2	38.9	4.5	—	53.0	—
2002	0.4	2.8	39.0	9.2	—	48.6	—
2001	0.4	2.9	43.5	3.6	—	49.7	—
2000	0.4	2.0	43.4	3.3	—	50.9	—

Mann Elementary School

Year	American Indian (%)	Asian (%)	Black (%)	Hispanic (%)	Pacific Islander (%)	White (%)	Two or More Races (%)
2016	0.0	4.5	7.1	6.7	0.2	68.5	12.9
2015	0.0	4.5	6.3	4.1	0.2	74.3	10.6
2014	0.0	4.0	6.9	4.0	0.2	73.4	11.5
2013	0.0	3.9	5.4	3.7	0.0	78.2	8.9
2012	0.0	3.2	8.3	2.8	0.0	78.4	7.3
2011	0.0	2.7	8.5	2.7	0.0	79.1	7.0
2010	0.0	2.2	9.1	2.6	—	78.7	7.4
2009	0.0	1.9	10.2	2.3	—	78.7	6.9
2008	0.0	1.1	11.0	2.0	—	79.7	6.2
2007	0.0	1.8	11.5	2.5	—	78.6	5.6
2006	0.0	2.8	11.9	2.2	—	78.5	4.6
2005	0.0	2.3	12.8	1.4	—	78.8	4.8
2004	0.0	2.7	14.9	2.5	—	79.9	—
2003	0.0	2.9	15.0	2.9	—	79.3	—
2002	0.0	3.7	11.2	5.9	—	79.3	—
2001	0.0	3.1	14.2	3.0	—	79.7	—
2000	0.2	2.5	16.2	2.9	—	78.3	—

Whittier Elementary School

Year	American Indian (%)	Asian (%)	Black (%)	Hispanic (%)	Pacific Islander (%)	White (%)	Two or More Races (%)
2016	0.0	3.7	19.9	12.3	0.0	52.1	12.0
2015	0.0	3.9	24.7	7.0	0.3	55.9	8.2
2014	0.0	2.8	23.1	5.1	0.3	57.4	11.4
2013	0.3	3.1	22.7	5.4	0.0	57.2	11.3
2012	0.3	2.6	21.0	4.7	0.0	61.1	10.4
2011	0.2	3.0	21.8	3.7	0.0	59.8	11.5
2010	0.2	3.7	24.8	2.6	—	57.1	11.5
2009	0.0	2.8	23.7	2.5	—	59.5	11.5
2008	0.0	2.7	24.8	2.9	—	59.8	9.9
2007	0.0	2.7	26.8	4.3	—	57.7	8.5
2006	0.0	4.0	25.8	3.5	—	58.1	8.7
2005	0.0	3.5	28.4	1.7	—	57.7	8.7
2004	0.0	3.3	31.9	1.9	—	62.9	—
2003	0.0	3.2	33.1	2.7	—	61.1	—
2002	1.0	2.2	32.9	8.5	—	55.4	—
2001	0.8	2.5	34.9	2.7	—	59.0	—
2000	0.6	2.3	36.2	2.5	—	58.4	—

Brooks Middle School

Year	American Indian (%)	Asian (%)	Black (%)	Hispanic (%)	Pacific Islander (%)	White (%)	Two or More Races (%)
2016	0.0	3.6	21.3	13.0	0.0	51.6	10.5
2015	0.2	4.6	26.5	5.1	0.0	52.0	11.5
2014	0.1	5.3	25.9	5.0	0.0	52.9	10.7
2013	0.0	5.2	26.7	4.9	0.0	53.5	9.7
2012	0.0	4.7	25.5	6.4	0.0	55.3	8.2
2011	0.2	4.5	27.8	5.1	0.0	54.2	8.2
2010	0.5	3.7	27.0	5.7	—	55.4	7.7
2009	0.0	4.1	31.8	3.6	—	53.0	7.5
2008	0.0	4.1	31.0	5.0	—	53.2	6.8
2007	0.0	4.2	34.9	4.0	—	50.4	6.5
2006	0.0	2.9	32.5	5.0	—	53.7	5.9
2005	0.1	4.0	33.9	4.9	—	51.7	5.4
2004	0.5	3.9	34.1	5.0	—	56.6	—
2003	0.4	4.5	31.2	4.3	—	59.7	—
2002	—	—	—	—	—	—	—
2001	—	—	—	—	—	—	—
2000	—	—	—	—	—	—	—

Julian Middle School

Year	American Indian (%)	Asian (%)	Black (%)	Hispanic (%)	Pacific Islander (%)	White (%)	Two or More Races (%)
2016	0.1	3.3	19.4	10.4	0.0	56.1	10.7
2015	0.0	3.2	24.2	5.6	0.1	56.7	10.1
2014	0.0	2.4	28.8	5.0	0.1	53.9	9.8
2013	0.0	2.3	31.3	4.7	0.1	52.2	9.4
2012	0.0	3.2	30.4	4.3	0.0	53.1	9.0
2011	0.0	3.1	28.4	3.6	0.0	56.6	8.4
2010	0.1	3.2	31.0	4.0	—	55.1	6.5
2009	0.2	3.1	32.0	3.5	—	55.0	6.2
2008	0.2	2.7	33.5	3.7	—	54.3	5.7
2007	0.4	2.5	31.7	3.5	—	56.7	5.2
2006	0.1	2.2	34.1	3.4	—	55.0	5.1
2005	0.2	1.7	33.9	3.1	—	56.0	5.1
2004	0.1	2.1	34.7	3.1	—	60.0	—
2003	0.1	2.5	33.6	3.4	—	60.4	—
2002	—	—	—	—	—	—	—
2001	—	—	—	—	—	—	—
2000	—	—	—	—	—	—	—

Oak Park Elementary School District 97

Year	American Indian (%)	Asian (%)	Black (%)	Hispanic (%)	Pacific Islander (%)	White (%)	Two or More Races (%)
2016	0.1	3.9	18.5	11.5	0.0	54.5	11.6
2015	0.1	4.4	21.3	6.2	0.2	56.7	11.2
2014	0.2	4.4	22.7	5.4	0.2	55.8	11.2
2013	0.1	4.4	23.4	5.7	0.1	56.3	10.1
2012	0.1	4.6	23.0	5.2	0.0	57.3	9.7
2011	0.2	4.2	23.9	4.8	0.0	—	9.5
2010	0.2	4.2	24.7	4.4	—	56.7	9.7
2009	0.0	4.3	25.8	3.8	—	56.9	9.2
2008	0.1	4.0	26.6	3.7	—	57.1	8.4
2007	0.1	3.7	28.2	3.8	—	56.5	7.8
2006	0.1	3.5	29.2	4.0	—	55.9	7.4
2005	0.1	3.6	29.8	3.9	—	55.6	6.9
2004	0.1	3.5	31.8	4.1	—	60.5	—
2003	0.2	3.6	31.7	4.0	—	60.4	—
2002	0.2	3.7	30.2	8.5	—	57.5	—
2001	0.2	3.1	34.4	3.8	—	58.4	—
2000	0.3	2.6	34.7	3.6	—	58.8	—

Source: Illinois Interactive Report Card.