

# Orbio os3 System OpX Overview

7.09.14



Tennant / Orbio / Aramark Confidential



# ORBIO OS3 OVERVIEW

## OSG Defined



- On-site generation of cleaning and disinfecting/sanitizing solutions
- Replaces many conventional packaged chemicals that require shipping, storage, dilution, training, packaging, waste and disposal.



## Fit with Blue Cleaning

- Sustainable solutions that provide optimal safety for employees and customers, while reducing the overall impact on the environment.



# ORBIO OS3 OVERVIEW

## Aramark Benefits



- Simplify and streamline cleaning systems and training



- Reduce cost to clean

## Client Benefits



- Cleaner facilities



- Reduced exposure of students and staff to concentrated, odor-causing chemicals



- Reduced environmental footprint



# TRAINING

## Aramark Chemicals Replaced

SaniMaster 4 (except BBP applications)  
Bowl Care Concentrate  
WallGlide Plus  
WallGlide Tile Cleaner  
All Purpose Cleaner 2  
Creamy Stainless Steel Polish  
FloorStar Light Duty Floor Cleaner 4

Fiber Fresh Light Extraction Cleaner  
Glassclene Pro  
Foam Control  
Stain Erase  
FiberFresh Ultra Pro  
Duoclene

## Best Practices – IMPORTANT!

- Cleaning Glass - Spray only a small amount of Orbio Multi Surface Cleaner on cloth to prevent streaking.
- Cleaning Stainless Steel – Remove all Stainless Steel Polish (and its oil) with conventional All Purpose Cleaner or Glass Cleaner before cleaning with Orbio Multi Surface Cleaner.



# TRAINING

## Orbio Solutions Application\*



Restrooms		
Fixtures	✓	✓
Mirrors and Glass	✓	
Floors		✓
Urinals and Toilets (To deodorize)		✓
Touchless Cleaning (Kaivac)**	Rinse ✓	Pre-spray ✓
Carpets	✓	
Hard Floors	✓	
Hard Surfaces	✓	

\*See Orbio Cleaning Guide for specific application information

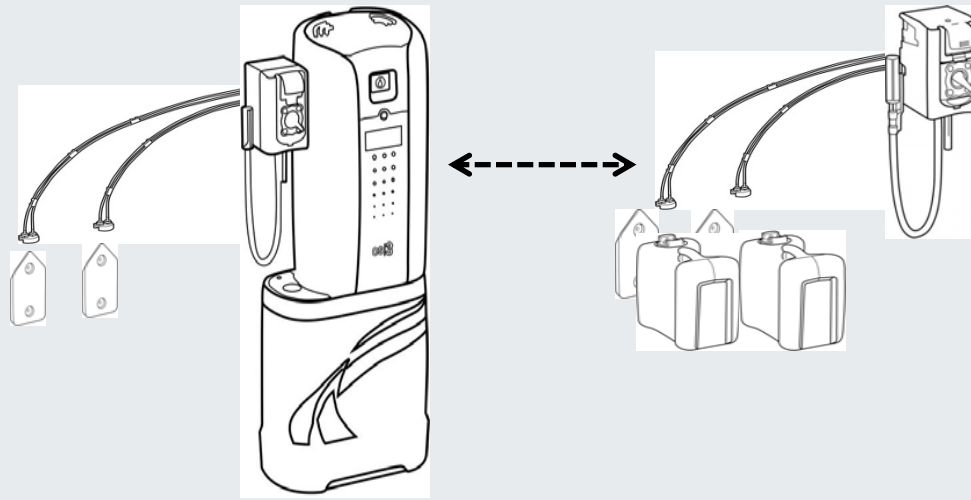
\*\*See Orbio Touchless Cleaning Guide for specific application information



## OS3 GENERATOR & SATELLITE SYSTEM CONFIG OVERVIEW



Config #1 – Generator Only  
Generator (AT20024)



Config #2 – Generator & (1) Satellite  
Generator (AT20024)  
+Dual Starter System (AT20027)

