

OKEMOS PUBLIC SCHOOLS

2022 Bond Program Update

December 11, 2023

TowerPinkster
Architecture · Engineering · Interiors

CHRISTMAN
BUILDING SINCE 1894

 **VERIDUS**
GROUP



Agenda

- Introductions
- BOE Roles and Responsibilities
- Current Project Updates
- Communication Plan
- Community Impact
- Next Steps





Veridus Group

- Allison Duncan - Project Executive

Tower Pinkster

- Ed Talaga - Senior Project Manager

The Christman Company

- Rob Crowe - Vice President
- Shane Lounsberry - Project Manager





BOARD OF EDUCATION

INFORMATIONAL UPDATES

- Bond Draw Schedule
- Design Milestone Updates
- Bid Results
- Construction Updates
- Communication Plans

BOARD ACTIONS

- District Guiding Principles
- 2022 Bond Program
- Permit & Inspection Services
- Bond Sales, 4 Series
- Approve Bids > \$29,000

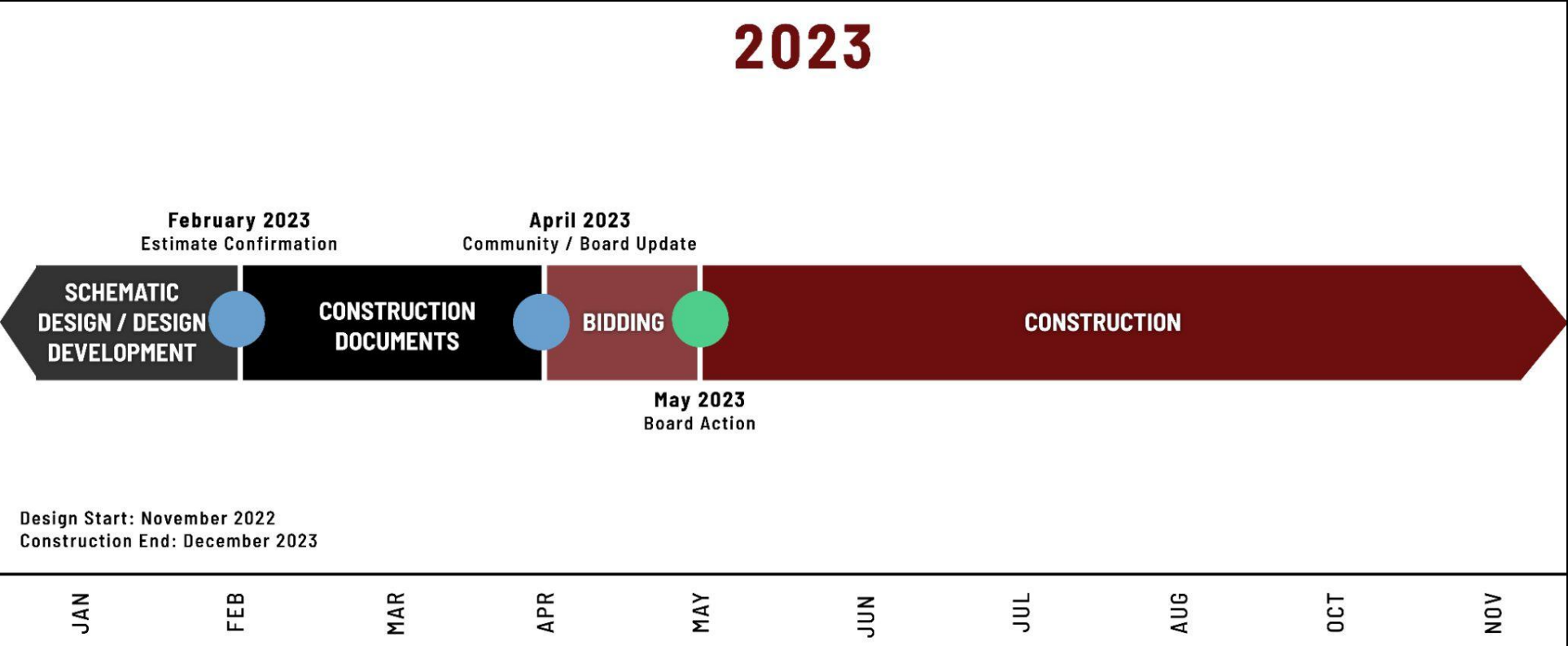


December - Board/Community Informational Update

- Construction - Bid Package 1 & 2
 - Central Montessori - Pressing Needs, Secure Vestibule/Main Office
 - Edgewood - Secure Vestibule/Main Office
 - Bennett Woods, Cornell - Secure Vestibule
 - High School Athletics – Soccer/Football complex site work
- Design Update - Bid Package 3
 - Bathroom Update
- Design Update - Bid Package 4
 - High School - Secure Vestibule/Main Office, Pool HVAC
 - Central Montessori - Utility Infrastructure Improvements
 - Hiawatha - Car Loop, Secure Vestibule, Playground
- Communication



Bid Package 1 & 2: Secure Vestibules, Pressing Needs, and High School Athletics Project Schedule





Central Montessori





CONSTRUCTION UPDATE

Edgewood





CONSTRUCTION UPDATE

Cornell





Bennett Woods





CONSTRUCTION UPDATE

High School Athletics Complex



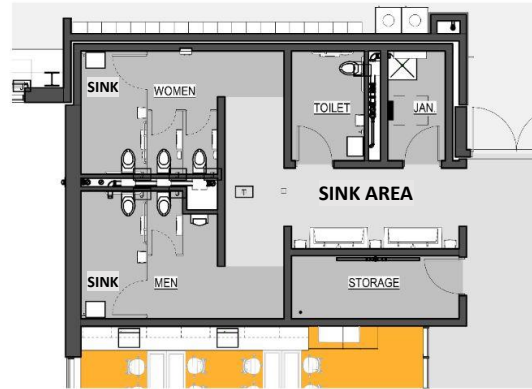


Current Phase: BP 1&2 Remaining Items

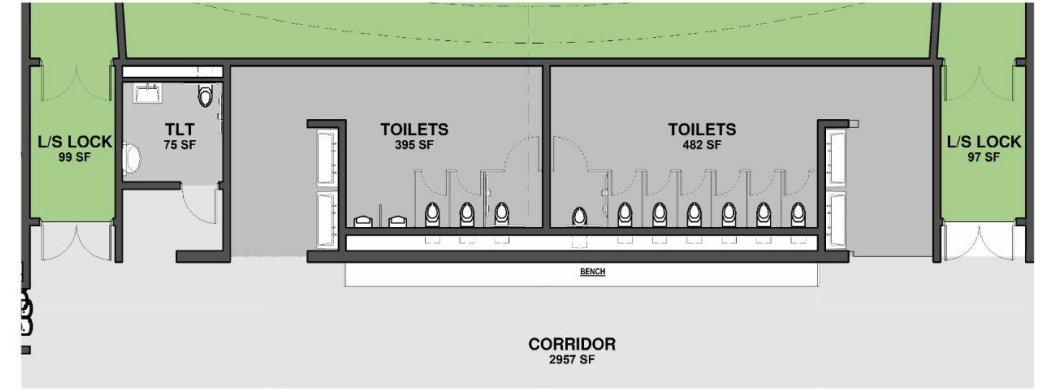
- Central Main Office and Secure Vestibule - 12/13/2023
 - Relocation over Winter Break
- Central Toilet Rooms - Completed
- Edgewood Main Office and Secure Vestibule - 12/13/2023
 - Relocation over Winter Break
- Cornell Secure Vestibule - Completed
- Bennett Woods Secure Vestibule - Completed
- High School Athletic Finishes - Completed



MIDDLE SCHOOL BATHROOM UPDATE



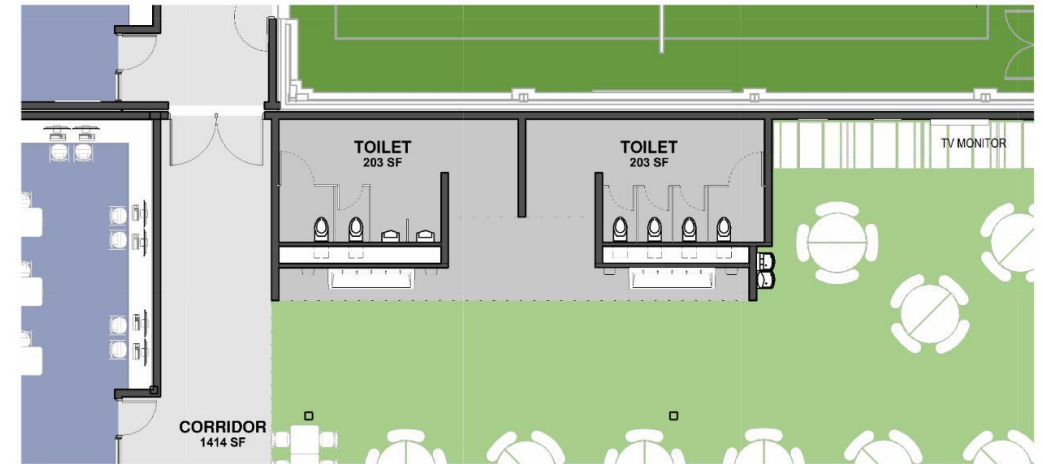
Classroom Wing Toilet Rooms



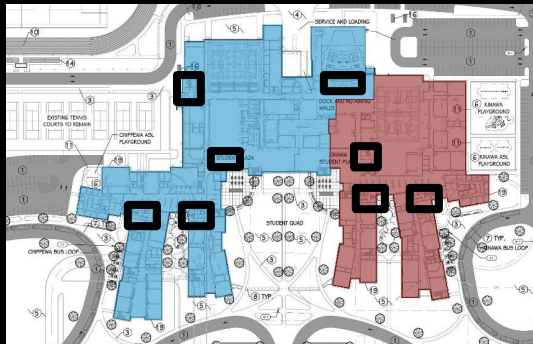
Auditorium Toilet Rooms



Gymnasium Toilet Rooms



Cafeteria Toilet Rooms





Bid Package 4 - Design Development Update

- Hiawatha
 - Bus Loop / Student Drop Off Improvements
 - Secure Vestibule, Playground
- High School
 - Secure Vestibule/Main Office, Pool HVAC
- Central Montessori
 - Utility Infrastructure Improvements



PLAN DEVELOPMENT & REVIEW

Design Team

- Tower Pinkster - Landscape Architect
- Hurley & Stewart - Civil/Transportation Engineer



Professional Engagement

- Diverse Staff Representation
 - District Leadership
 - Building Principal
 - Director of Health/Safety
 - Director of Transportation
- The Christman Company
- Ingham County Road Department





HIAWATHA SITE IMPROVEMENTS

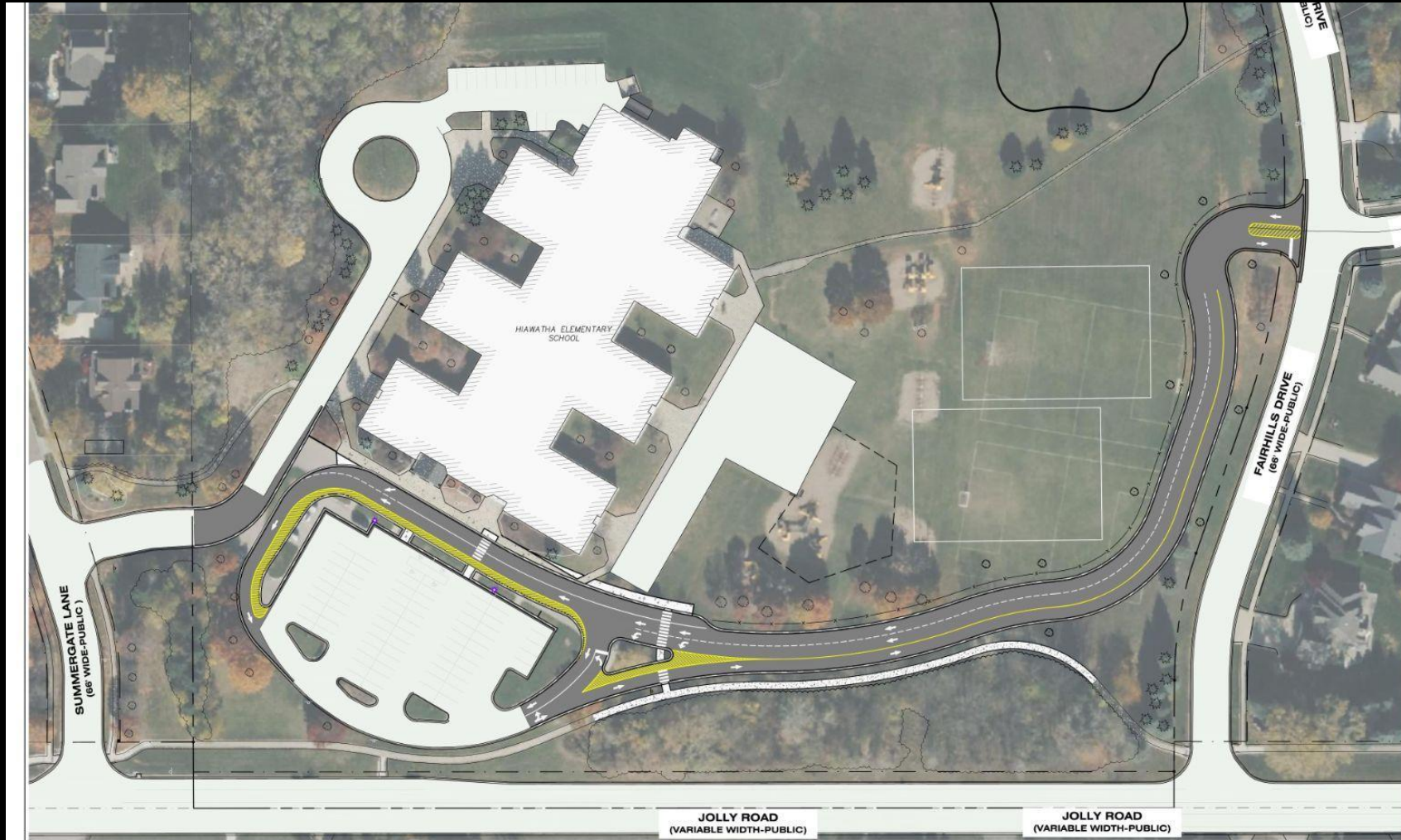
Existing Layout





HIAWATHA SITE IMPROVEMENTS

New Design Layout





HIAWATHA SITE IMPROVEMENTS





HIAWATHA SITE IMPROVEMENTS





HIAWATHA SITE IMPROVEMENTS





HIAWATHA SITE IMPROVEMENTS





HIAWATHA SITE IMPROVEMENTS





HIAWATHA SITE IMPROVEMENTS



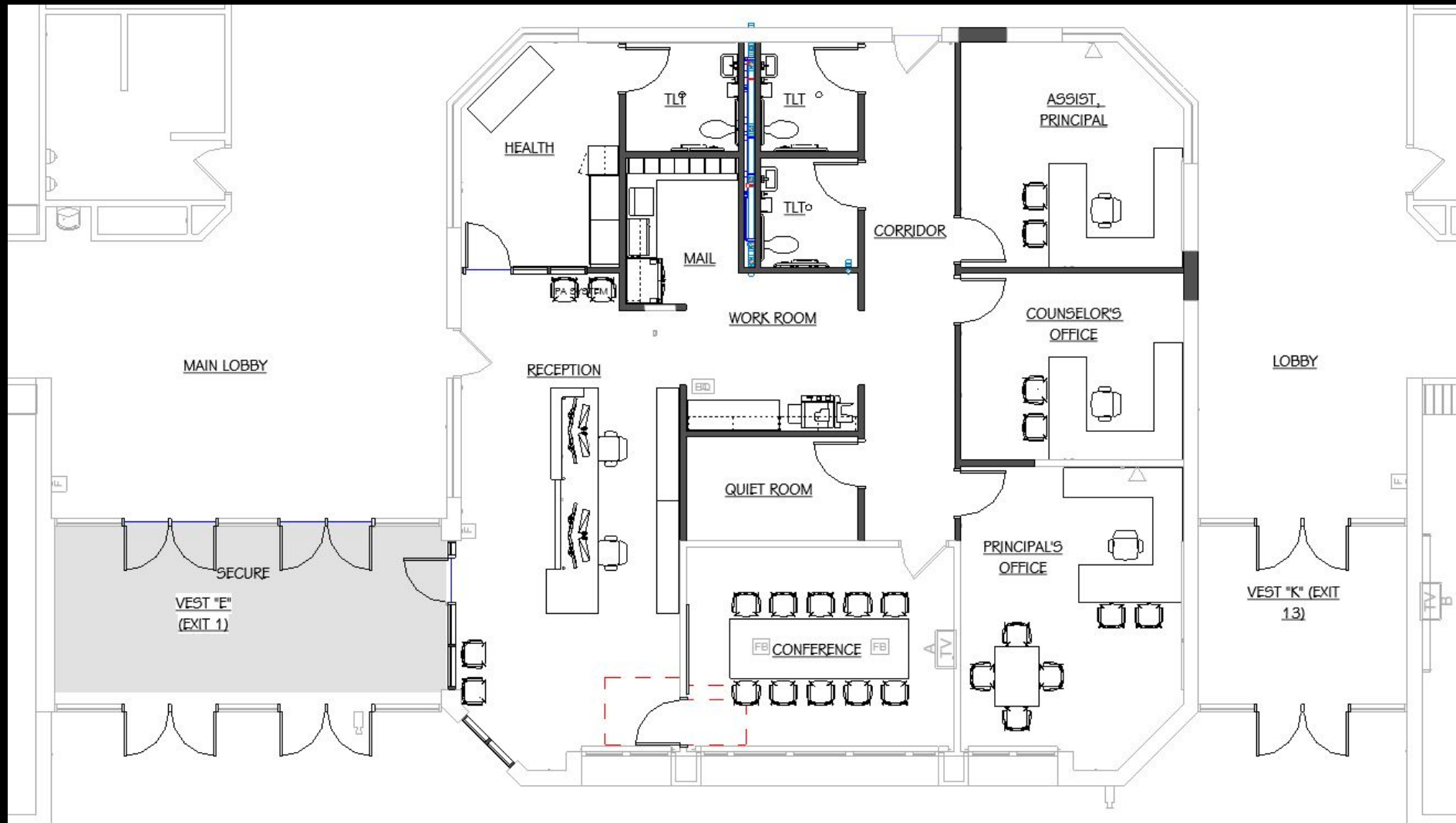


Increased Safety and Efficiency of Hiawatha Car / Bus Loop

- Separation of car line and bus loop
 - Dedicated entrance on opposite sides of campus
- Decrease congestion on site
 - Current - 30 cars
 - Improvements - 60 cars
- Reduce backup onto Jolly Road
 - Current - 20 cars
 - Improvements - 0 cars
- Two access points for emergency response
- Additional parking available during special school events



HIAWATHA OFFICE IMPROVEMENTS



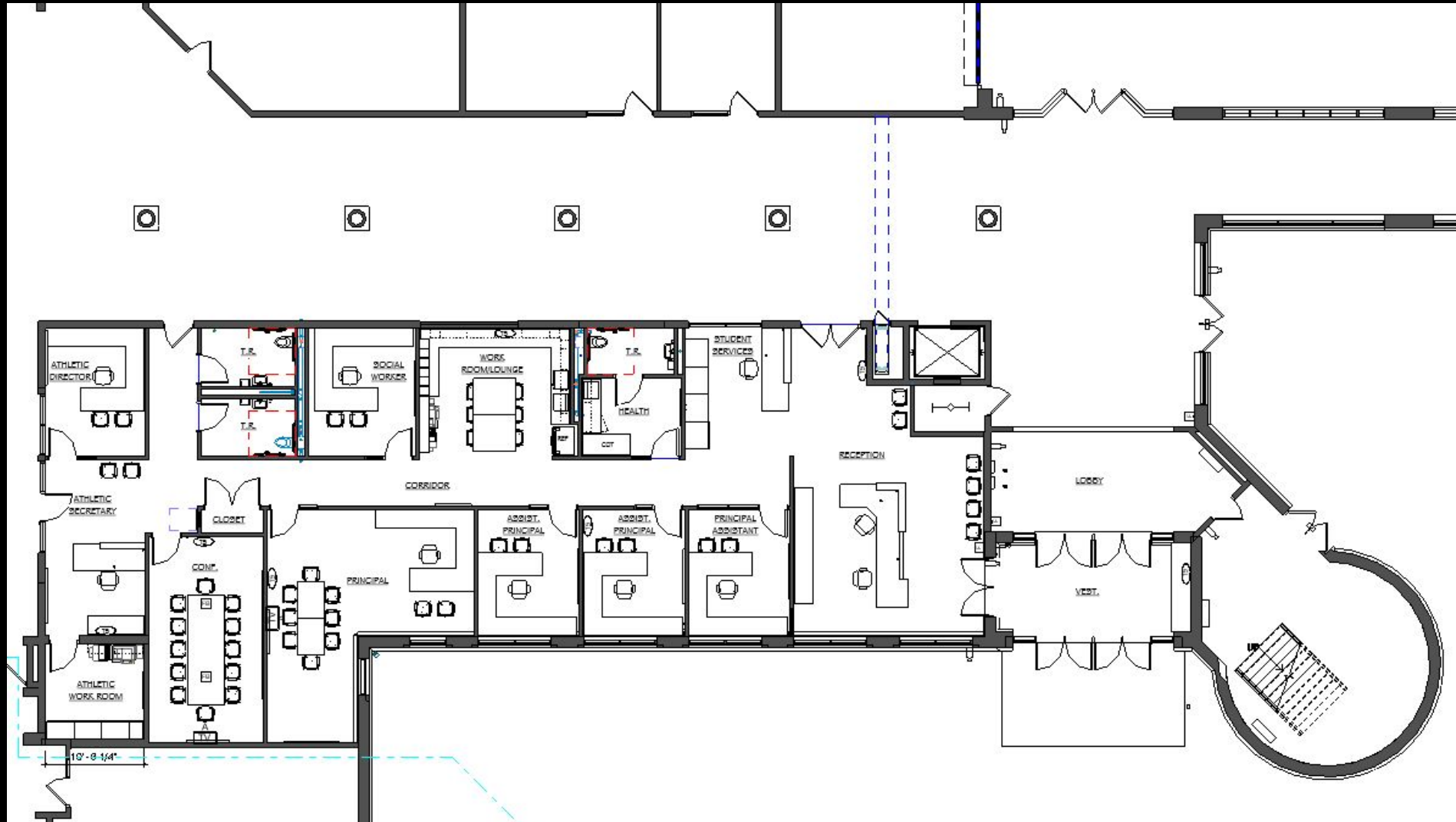


HIAWATHA OFFICE IMPROVEMENTS





HIGH SCHOOL OFFICE IMPROVEMENTS



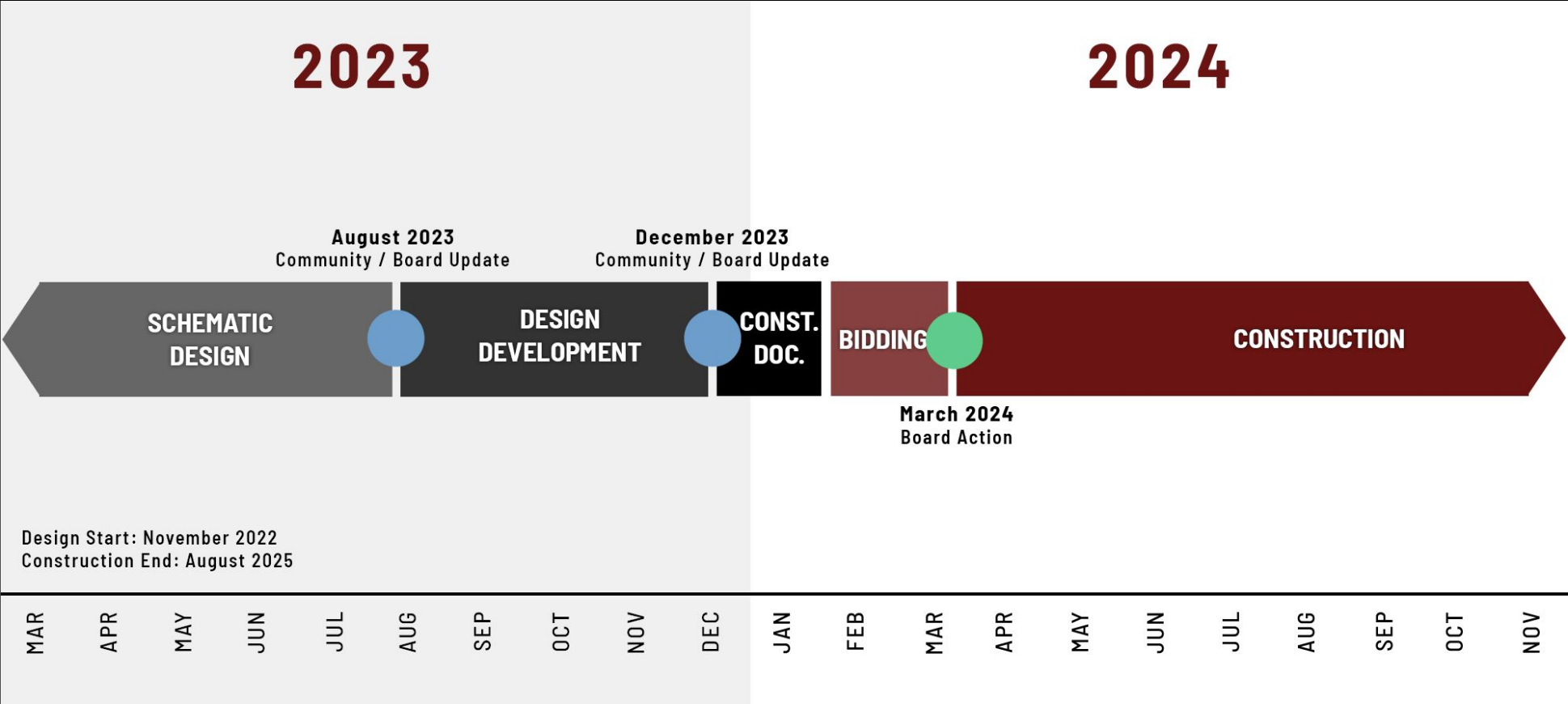


HIGH SCHOOL OFFICE IMPROVEMENTS





BP 4: Secure Vestibules & Pressing Needs





Professional Engagement - Project Design

- Community Input Sessions
- Diverse Staff Representation
- Weekly Meetings
- Focus Groups
 - Secure Vestibule
 - Food Service
 - Administration / Front Desk Standards
 - Building Design
 - Recreation/Athletic Fields
 - Chippewa/Kinawa Student Input



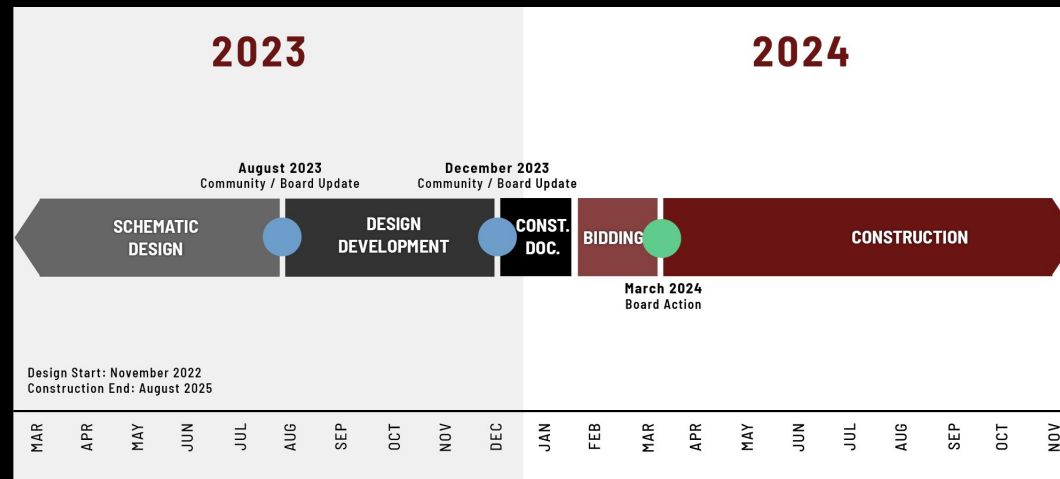
Design Principles: Critical Success Factors

- **Safety and Security** - provide a safe and secure environment for staff and students to feel warmed, welcomed and inspired
- **OPS = The Hub of the Community** - The district is the heart of the community serving after school activities for both school and community
- **Well Defined Entries** - Utilizing material, massing and transparency to clearly define student, guest and event entries
- **District Standards** - Consistency in building material, finishes and branding
- **Flexibility** - Planned for future growth
- **Sustainability and Green Space** - Emphasis on the natural environment, bringing the outside in
- **On Budget / Financially Responsible** - Ensure financial stability while being good stewards of taxpayer dollars



Next Updates

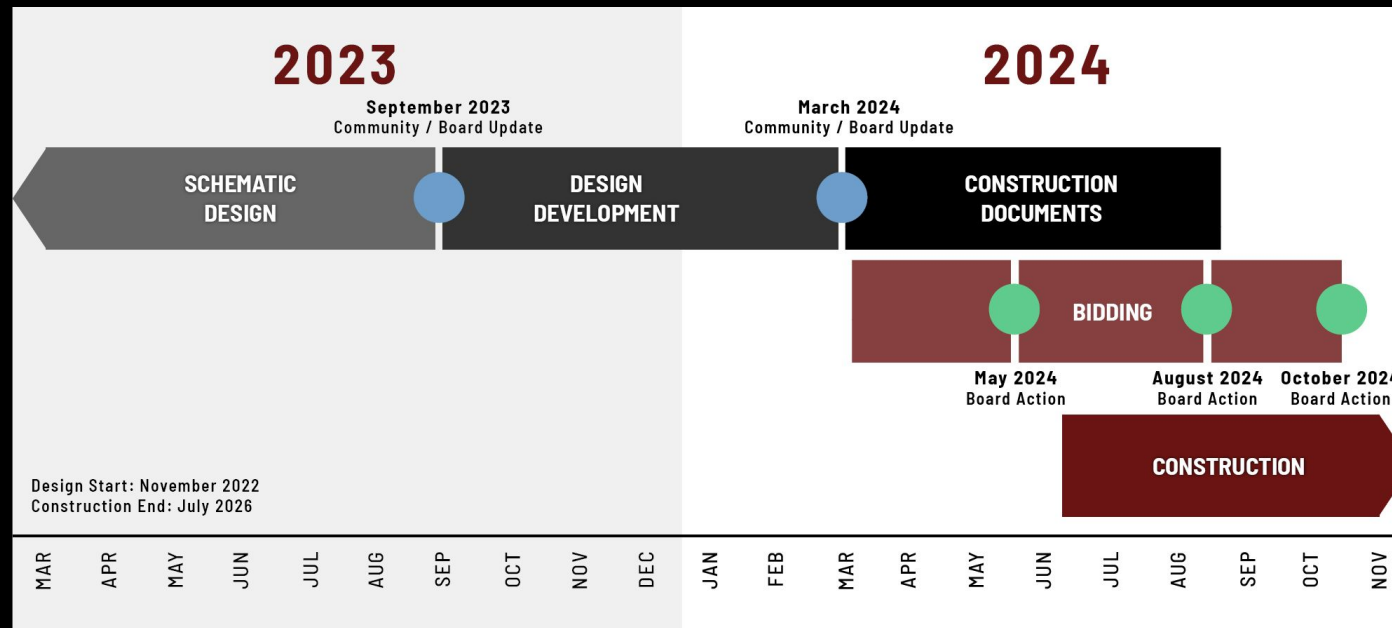
- March 2024
 - Bid Package 4 - Bid Results / Approval
 - High School - Secure Vestibule/Main Office, Pool HVAC
 - Central Montessori - Utility Infrastructure Improvements
 - Hiawatha - Car Loop, Secure Vestibule, Playground





Next Updates

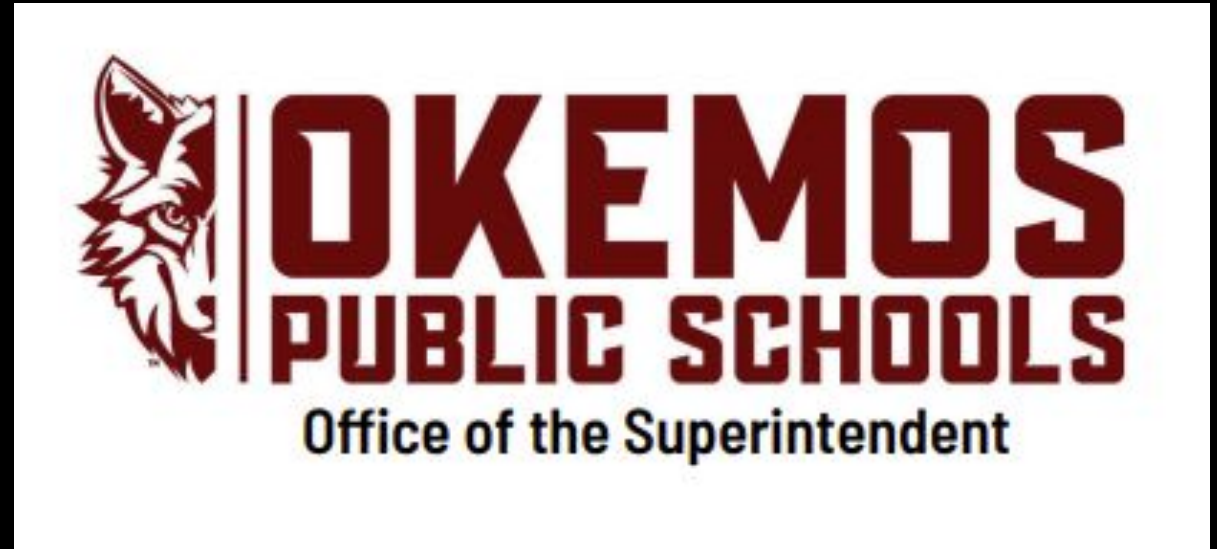
- March 2024
 - Bid Package 3 - Design Development
 - New Chippewa Middle School





Communication Plan

- Board of Education
- Community
 - Bond Website
 - Email Newsletters
 - Hiawatha School and Community Update
- OPS District Employees
 - Leadership Council
 - Staff



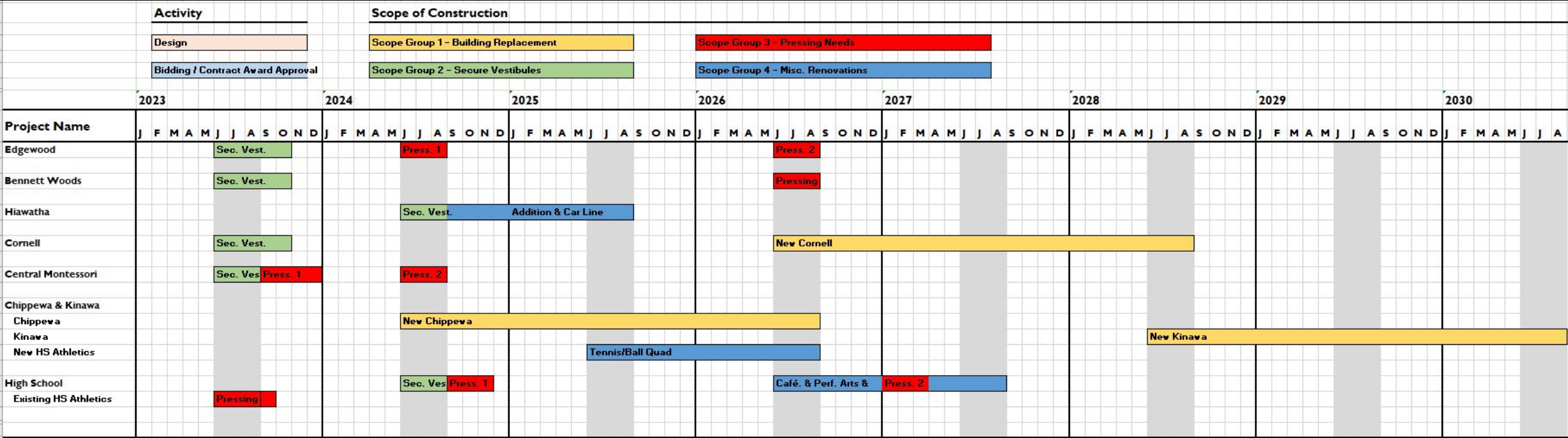


QUESTIONS

QUESTIONS



Bond Program Schedule Overview





Bond Program Schedule Overview

