

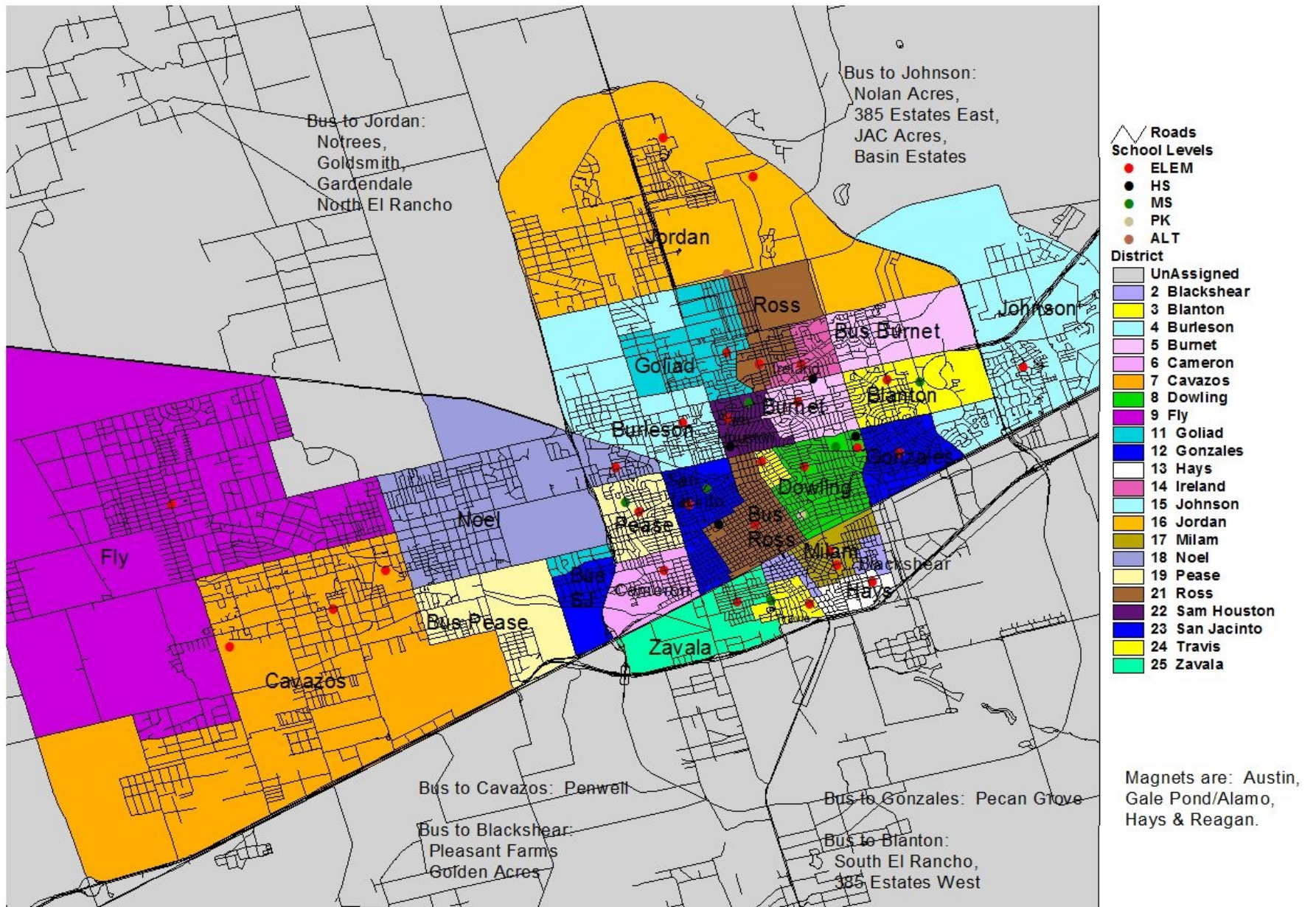
# ECISD

DRAFT ZONE PLAN OPTIONS/CONSIDERATIONS

October 13, 2014

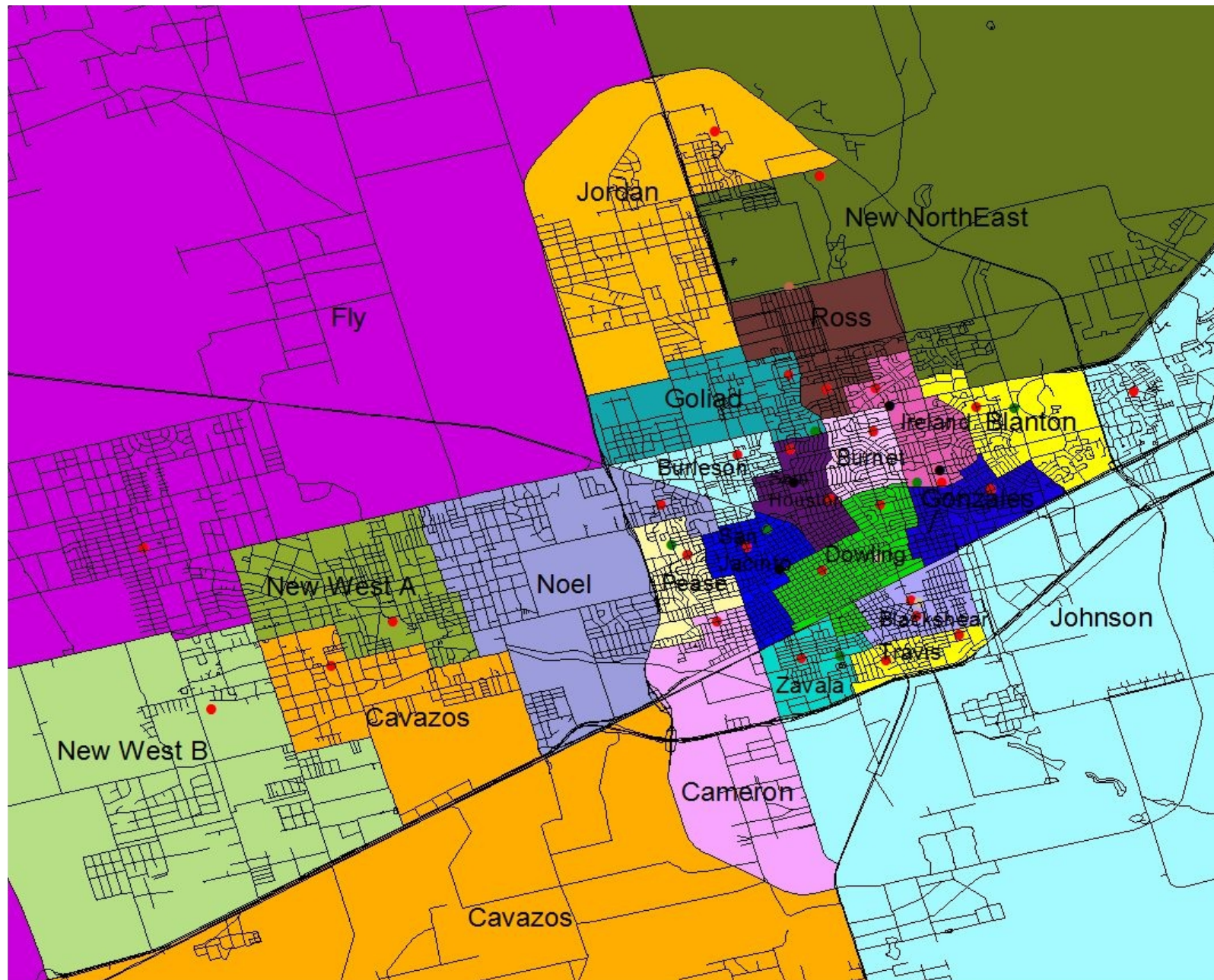
ECISD

Johnston & Associates



# Existing Elementary Boundaries

ECISD 2007-2008 Elementary  
Boundary Map.  
Johnston & Associates, July 25, 2014.



- ⚡ Roads
- School Levels
  - ELEM
  - HS
  - MS
  - PK
  - ALT
- District
  - 2 Blackshear
  - 3 Blanton
  - 4 Burleson
  - 5 Burnet
  - 6 Cameron
  - 7 Cavazos
  - 8 Dowling
  - 9 Fly
  - 11 Goliad
  - 12 Gonzales
  - 14 Ireland
  - 15 Johnson
  - 16 Jordan
  - 18 Noel
  - 19 Pease
  - 21 Ross
  - 22 Sam Houston
  - 23 San Jacinto
  - 24 Travis
  - 25 Zavala
  - 26 New West A
  - 27 New West B
  - 28 New NEast

Magnets are: Austin, Gale Pond/Alamo, Hays, Milam & Reagan.

# Draft Elementary Plan B1

**ELEMENTARY PLAN B1**

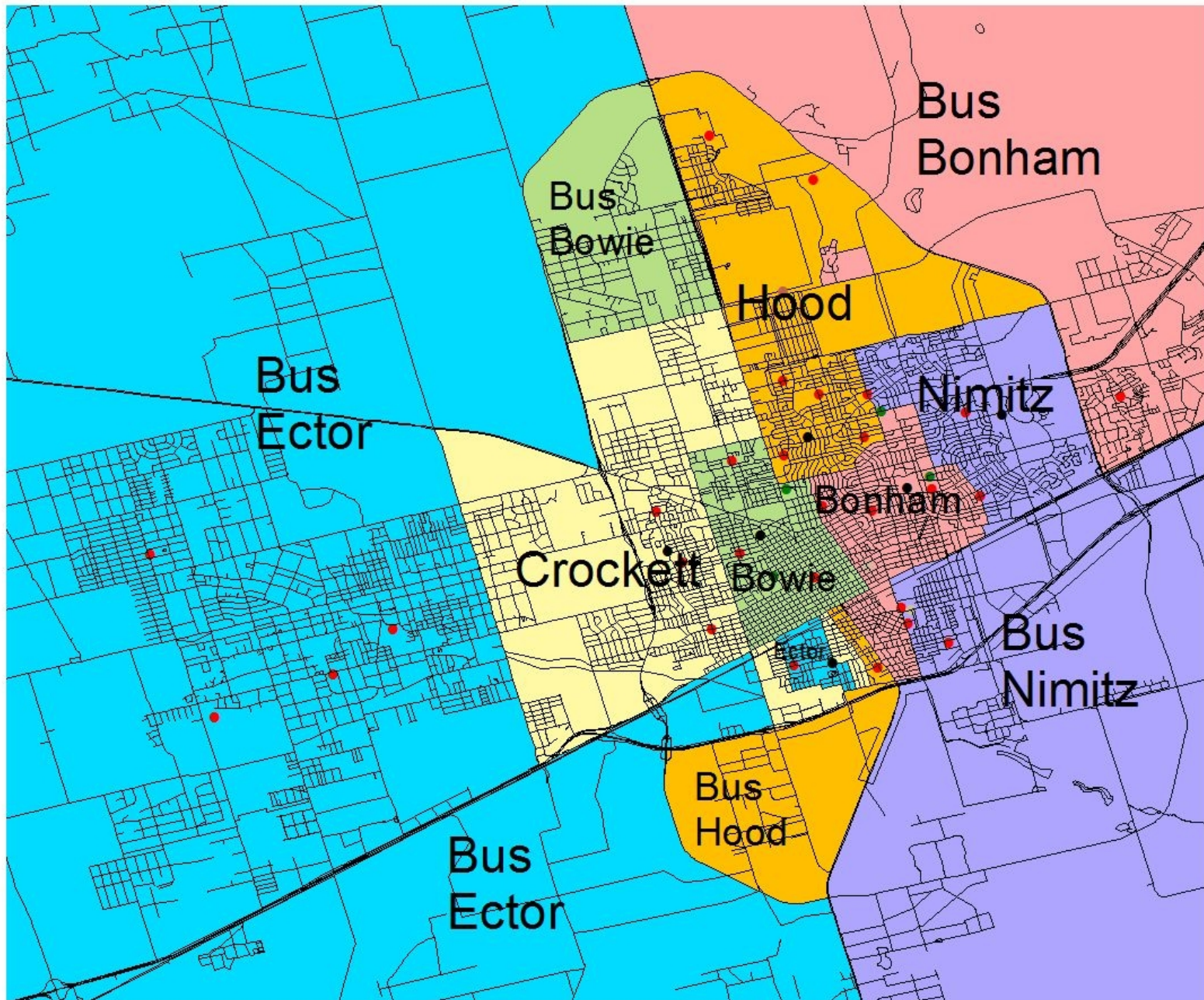
MAP CODE	SCHOOL/ CAMPUS	Total Classroom Seats Available	Neighborhd Seats Available	Magnet Seats Available	Campus Utilization Rate	Neighborhd Students by <i>Plan B1</i>	% Neighborhd Seats
1	AUSTIN	719	0	534	74%	0	N/A
2	BLACKSHEAR	825	479	221	85%	454	95%
3	BLANTON	608	458		75%	430	94%
4	BURLESON	664	510		77%	492	96%
5	BURNET	802	637		79%	611	96%
6	CAMERON	802	402	194	74%	399	99%
7	CAVAZOS	963	707		73%	693	98%
8	DOWLING	802	637		79%	612	96%
9	FLY	838	670		80%	667	100%
10	GALE P/ALAMO	572	0	462	81%	0	N/A
11	GOLIAD	664	510		77%	476	93%
12	GONZALES	615	465		76%	450	97%
13	HAYS	503	0	415	83%	0	N/A
14	IRELAND	664	510		77%	481	94%
15	JOHNSON	825	658		80%	618	94%
16	JORDAN	825	658		80%	610	93%
17	MILAM	687	0	599	87%	0	N/A
18	NOEL	756	594		79%	565	95%
19	PEASE	802	637		79%	608	95%
20	REAGAN	667	0	557	84%	0	N/A
21	ROSS	608	448		74%	432	96%
22	SAM HOUSTON	684	528		77%	507	96%
23	SAN JACINTO	710	552		78%	539	98%
24	TRAVIS	710	444	120	79%	420	95%
25	ZAVALA	825	565	110	82%	547	97%
26	NEW WEST A	750	630		84%	633	100%
27	NEW WEST B	750	630		84%	629	100%
28	NEW EAST	750	630		84%	572	91%
<b>TOTAL NEIGHBORHOOD SEATS CAPACITY</b>			<b>12511</b>			<b>12445</b>	<b>99%</b>


DIVERSITY FACTORS		FACTOR ONE								IN RANGE	Studnt (Incl) Magnet
Plan B1	Total Neigh Studnt	ECO DIS	EC %	LEP	LEP %	SPEC ED	SE %	GT	GT %		
Austin											0
Blackshear	454	419	81%	103	20%	34	7%	13	3%	2	518
Blanton	430	249	45%	64	12%	26	5%	66	12%	2	553
Burleson	492	408	68%	111	19%	36	6%	38	6%	4	597
Burnet	611	414	55%	65	9%	43	6%	54	7%	3	751
Cameron	399	358	79%	141	31%	37	8%	20	4%	0	455
Cavazos	693	531	67%	290	22%	32	4%	38	5%	2	795
Dowling	612	531	67%	176	22%	49	6%	41	5%	4	789
Fly	667	476	60%	245	31%	47	6%	63	8%	3	788
Alamo	0	0		0		0		0			0
Goliad	476	400	72%	55	10%	34	6%	33	6%	4	559
Gonzales	450	231	41%	56	10%	29	5%	37	7%	3	561
Hays	0	0		0		0		0			0
Ireland	481	197	32%	25	4%	48	8%	70	11%	0	611
Johnson	618	278	35%	119	15%	35	4%	89	11%	1	794
Jordan	610	268	39%	111	16%	40	6%	64	9%	3	696
Milam	0	0		0		0		0			0
Noel	565	390	61%	121	19%	45	7%	33	5%	4	644
Pease	608	454	61%	125	17%	40	5%	42	6%	4	743
Reagan	0	0		0		0		0			0
Ross	432	247	48%	30	6%	40	8%	35	7%	2	512
Sam Houston	507	452	68%	127	19%	46	7%	26	4%	3	665
San Jacinto	539	436	65%	109	16%	47	7%	54	8%	4	673
Travis	420	364	79%	109	24%	23	5%	26	6%	3	462
Zavala	547	453	77%	213	36%	35	6%	29	5%	3	585
New West A	633	448	61%	216	29%	47	6%	51	7%	4	737
New West B	629	454	64%	283	40%	33	5%	40	6%	3	711
New East	572	211	31%	53	9%	34	5%	65	9%	2	687
<b>AVERAGES</b>			62%		20%		6%		7%		
<b>DISTRICT TOTALS</b>	12445	8669	69.7%	2947	23.7%	880	7.1%	1027	8.3%		14886
<b>DIVERSITY INDICES</b>			<b>1</b>		<b>2</b>		<b>3</b>		<b>4</b>	<b>TLT</b>	
<b>Standard Deviation</b>		+/-	15.1%	+/-	10.04%	+/-	1.10%	+/-	2.41%		
<b>LOWER BOUNDS</b>			46%		10%		5%		5%		
<b>UPPER BOUNDS</b>			77%		30%		7%		10%		

DIVERSITY FACTORS		FACTOR TWO						IN RANGE	RANK	Studnt (Incl) Magnet	
Plan B1	Total Neigh Studnt	WHITE	WHITE %	HISP	HISP %	OTHER	OTHER %				
Austin	0	0		0		0					0
Blackshear	454	16	3%	406	78%	96	19%	1	3	518	
Blanton	430	179	32%	310	56%	64	12%	1	3	553	
Burleson	492	96	16%	467	78%	34	6%	3	7	597	
Burnet	611	176	23%	508	68%	67	9%	3	6	751	
Cameron	399	27	6%	410	90%	18	4%	1	1	455	
Cavazos	693	91	11%	698	88%	6	1%	2	4	795	
Dowling	612	85	11%	659	84%	45	6%	3	7	789	
Fly	667	149	19%	621	79%	18	2%	3	6	788	
Alamo	0	0		0		0				0	
Goliad	476	117	21%	400	72%	42	8%	3	7	559	
Gonzales	450	183	33%	320	57%	58	10%	2	5	561	
Hays	0	0		0		0				0	
Ireland	481	253	41%	313	51%	45	7%	1	1	611	
Johnson	618	247	31%	505	64%	42	5%	3	4	794	
Jordan	610	257	37%	413	59%	26	4%	1	4	696	
Milam	0	0		0		0				0	
Noel	565	144	22%	479	74%	21	3%	3	7	644	
Pease	608	73	10%	627	84%	43	6%	3	7	743	
Reagan	0	0		0		0				0	
Ross	432	206	40%	273	53%	33	6%	1	3	512	
Sam Houston	507	102	15%	518	78%	45	7%	3	6	665	
San Jacinto	539	89	13%	556	83%	28	4%	3	7	673	
Travis	420	12	3%	383	83%	67	15%	1	4	462	
Zavala	547	16	3%	540	92%	29	5%	1	4	585	
New West A	633	188	26%	540	73%	9	1%	2	6	737	
New West B	629	83	12%	620	87%	8	1%	2	5	711	
New Neast	572	290	42%	353	51%	44	6%	1	3	687	
<b>AVERAGES</b>			21%		76%		7%				
<b>DISTRICT TOTALS</b>	12445	3079	24.7%	10919	87.7%	888	7.1%		<b>4.8</b>	14886	
<b>DIVERSITY INDICES</b>			<b>1</b>		<b>2</b>		<b>3</b>	<b>TLT</b>	<b>TLT</b>		
<b>Standard Deviation</b>		+/-	12.6%	+/-	12.9%	+/-	4.2%				
<b>LOWER BOUNDS</b>			9%		64%		2%				
<b>UPPER BOUNDS</b>			34%		89%		11%				

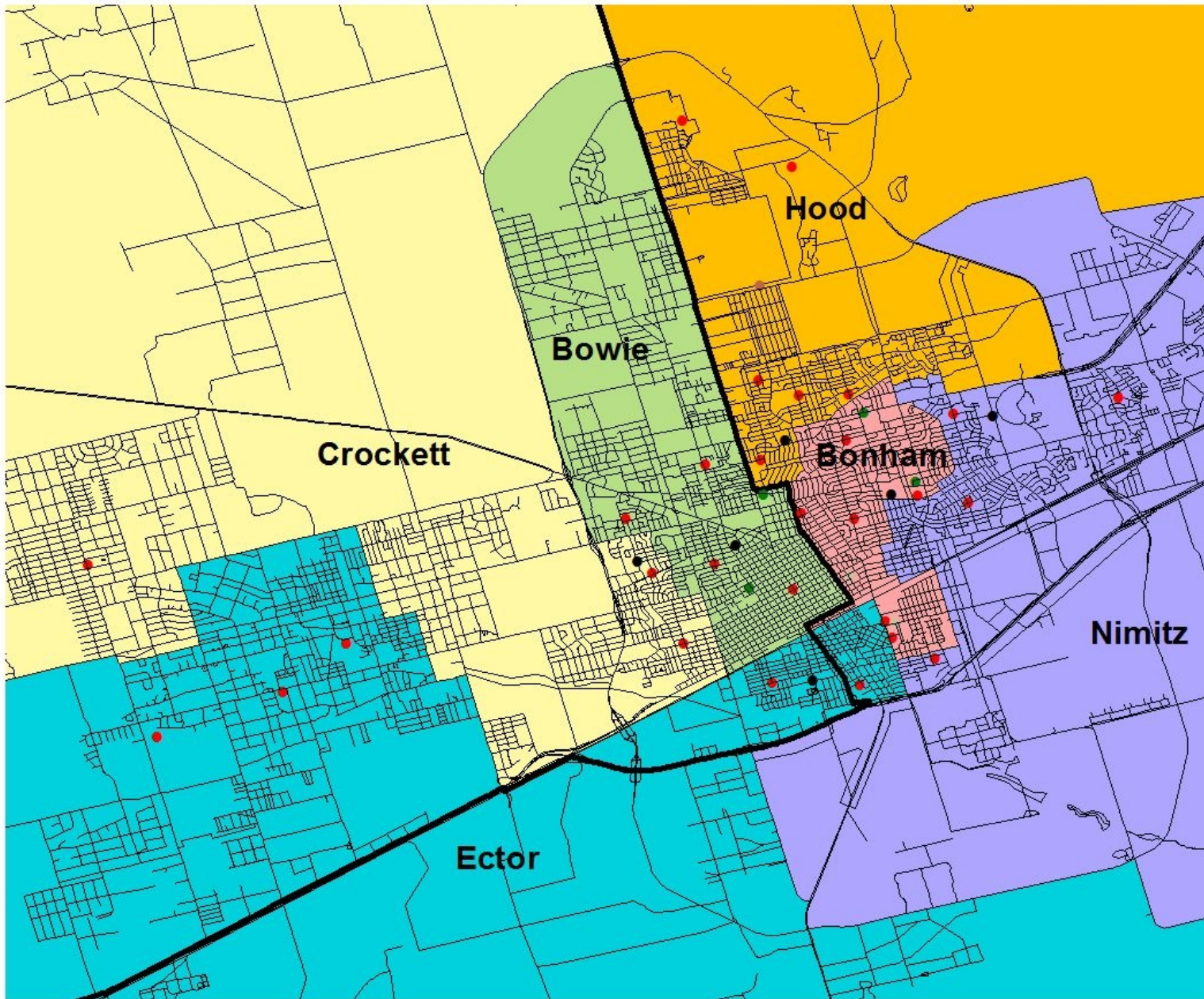
Total does include eligibility 0 students.

Numbers reflect campus of enrollment on October, 2013.



-  Roads
- All Schools**
- ELEM
- HS
- MS
- PK
- ALT
- District**
- 1 Bonham
- 2 Bowie
- 3 Crockett
- 4 Ector
- 5 Hood
- 6 Nimitz

# Existing Junior High Boundaries



- ⚡ Roads
- School Levels
  - ELEM
  - HS
  - MS
  - PK
  - ALT
- ▭ Current HS Bound
- District
  - UnAssigned
  - 1 Bonham
  - 2 Bowie
  - 3 Crockett
  - 4 Ector
  - 5 Hood
  - 6 Nimitz

ECISD  
 Johnston & Associates  
 9/17/2014

Draft Middle School Plan D1 w/ Existing HS Boundary

**MIDDLE SCHOOL PLAN D1**

MAP CODE	SCHOOL/ CAMPUS	Total Classroom Seats Available	Campus Utilization Rate	Campus Planning Capacity	Neighborhood Students by <i>MS Plan D1</i>	% Neighborhood Seats Planned
1	BONHAM	1128	88%	996	1012	102%
2	BOWIE	1444	88%	1275	1149	90%
3	CROCKETT	1260	88%	1113	1114	100%
4	ECTOR	1848	88%	1632	1656	101%
5	JBHOOD	1095	88%	967	980	101%
6	NIMITZ	1050	88%	927	953	103%
<b>TOTAL NEIGHBORHOOD SEATS CAPACITY</b>				<b>6910</b>	<b>6864</b>	<b>99%</b>

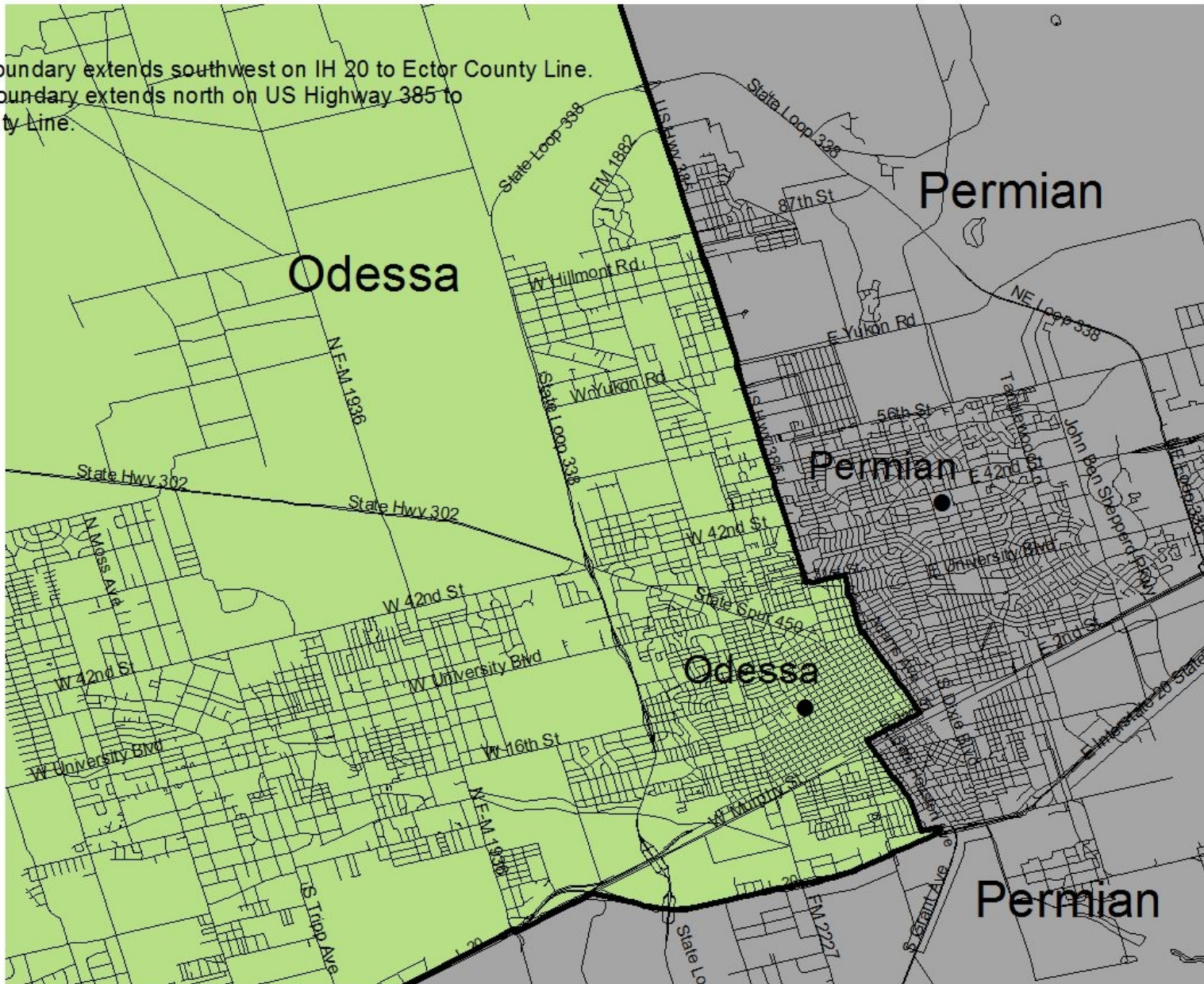
**Feeder Patterns**

<b>Bonham</b>		<b>Crockett</b>	<b>Hood</b>
	*Blackshear Part		*Cameron Part
	Burnet		*Downing Part
	*Dowling Part		Fly
	*Ireland Part		*Noel Part
	*Sam Houston Part		Pease
			Ross
			*Sam Houston Part
<b>Bowie</b>		<b>Ector</b>	<b>Nimitz</b>
	Burleson		*Blackshear Part
	*Dowling Part		*Cameron Part
	*Goliad Part		Cavazos
	*Jordan Part		*Dowling Part
	*Noel Part		*Downing Part
	*Sam Houston Part		*Johnson Part
	San Jacinto		*Travis Part
			West
			Zavala



<b>DIVERSITY FACTORS</b>		<b>FACTOR ONE</b>								<b>IN RANGE</b>
<b>MS Plan D1</b>	<b>TOTAL ENROLL</b>	<b>ECO DIS</b>	<b>EC %</b>	<b>LEP</b>	<b>LEP %</b>	<b>SPEC ED</b>	<b>SE %</b>	<b>GT</b>	<b>GT %</b>	
Bonham Jr. High	1012	528	52%	121	12%	75	7%	102	10%	4
Bowie Jr. High	1149	676	59%	205	18%	117	10%	87	8%	4
Crockett Jr. High	1114	654	59%	263	24%	124	11%	74	7%	3
Ector Jr. High	1656	1047	63%	479	29%	138	8%	101	6%	2
Hood Jr. High	980	373	38%	73	7%	72	7%	113	12%	2
Nimitz Jr. High	953	292	31%	54	6%	63	7%	137	14%	1
<b>Junior High Averages</b>			50%		16%		9%		9%	
<b>Totals</b>	<b>6864</b>	<b>3570</b>		<b>1195</b>		<b>589</b>		<b>614</b>		
<b>DIVERSITY INDICES</b>			<b>1</b>		<b>2</b>		<b>3</b>		<b>4</b>	<b>TLT</b>
<b>Standard Deviation</b>		<b>+/-</b>	<b>11.9%</b>	<b>+/-</b>	<b>8.4%</b>	<b>+/-</b>	<b>1.6%</b>	<b>+/-</b>	<b>2.9%</b>	
<b>LOWER BOUNDS</b>			<b>38%</b>		<b>7%</b>		<b>7%</b>		<b>6%</b>	
<b>UPPER BOUNDS</b>			<b>62%</b>		<b>24%</b>		<b>10%</b>		<b>12%</b>	
<b>DIVERSITY FACTORS</b>		<b>FACTOR TWO</b>						<b>IN RANGE</b>	<b>RANK</b>	
<b>MS Plan D1</b>	<b>TOTAL ENROLL</b>	<b>WHITE</b>	<b>WHITE %</b>	<b>HISP</b>	<b>HISP %</b>	<b>OTHER</b>	<b>OTHER %</b>			
Bonham Jr. High	1012	212	21%	694	69%	106	10%	3	7	
Bowie Jr. High	1149	202	18%	889	77%	58	5%	3	7	
Crockett Jr. High	1114	163	15%	918	82%	33	3%	3	6	
Ector Jr. High	1656	157	9%	1447	87%	52	3%	1	3	
Hood Jr. High	980	341	35%	553	56%	86	9%	2	4	
Nimitz Jr. High	953	357	37%	459	48%	137	14%	0	1	
<b>Junior High Averages</b>			22%		70%		7%			
<b>Totals</b>	<b>6864</b>	<b>1432</b>		<b>4960</b>		<b>472</b>			<b>4.667</b>	
<b>DIVERSITY INDICES</b>			<b>1</b>		<b>2</b>		<b>3</b>		<b>TLT</b>	
<b>Standard Deviation</b>		<b>+/-</b>	<b>10.3%</b>	<b>+/-</b>	<b>14.0%</b>	<b>+/-</b>	<b>4.2%</b>			
<b>LOWER BOUNDS</b>			<b>12%</b>		<b>56%</b>		<b>3%</b>			
<b>UPPER BOUNDS</b>			<b>33%</b>		<b>84%</b>		<b>12%</b>			
Total does include eligibility 0 students.										
Numbers reflect campus of enrollment on October, 2013. These numbers do not reflect the attendance zone of the student address.										

Western boundary extends southwest on IH 20 to Ector County Line.  
Northern boundary extends north on US Highway 385 to Ector County Line.



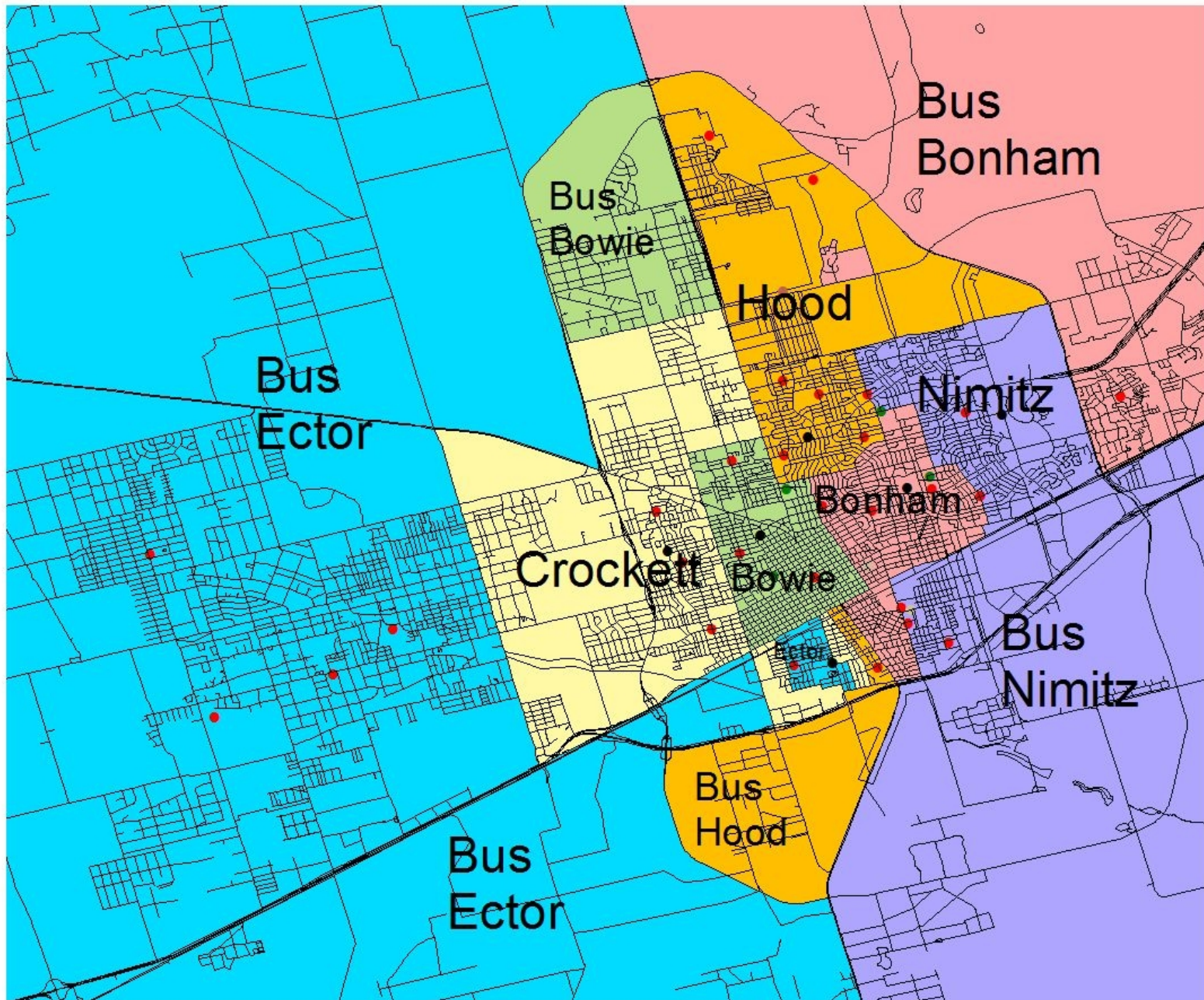
# Draft High School Plan D1 – Existing Zones Plan

						10/1/2014
<b>HIGH SCHOOL PLAN D1</b>						
MAP CODE	SCHOOL/ CAMPUS	Total Classroom Seats Available	Campus Utilization Rate	Campus Planning Capacity	Neighborhd Students by <i>HS Plan C1</i>	% Neighborhd Seats Planned
1	Odessa High	4078	90%	3680	3496	95%
2	Permian High	3770	90%	3401	3550	104%
<b>TOTAL NEIGHBORHOOD SEATS CAPACITY</b>				<b>7081</b>	<b>7046</b>	<b>100%</b>
<b>FEEDER PATTERNS</b>						
<b>Odessa High School</b>						
	Bowie					
	Crockett					
	Ector - Partial					
<b>Permian High School</b>						
	Bonham					
	Hood					
	Nimitz					
	Ector-Partial					

<b>DIVERSITY FACTORS</b>		<b>FACTOR ONE</b>								
<b>HS Plan D1</b>	<b>TOTAL ENROLL</b>	<b>ECO DIS</b>	<b>EC %</b>	<b>LEP</b>	<b>LEP %</b>	<b>SPEC ED</b>	<b>SE %</b>	<b>GT</b>	<b>GT %</b>	
Odessa High School	3496	1534	44%	409	12%	311	9%	225	6%	
Permian High School	3550	1041	29%	187	5%	288	8%	394	11%	
<b>Difference</b>			<b>14.6</b>		<b>6.4</b>		<b>0.8</b>		<b>4.7</b>	
<b>HS Averages</b>			<b>37%</b>		<b>8%</b>		<b>9%</b>		<b>9%</b>	
<b>Totals</b>	7046	2575		596		599		619		
<b>DIVERSITY INDICES</b>			<b>1</b>		<b>2</b>		<b>3</b>		<b>4</b>	
<b>DIVERSITY FACTORS</b>		<b>FACTOR TWO</b>								
<b>HS Plan D1</b>	<b>TOTAL ENROLL</b>	<b>WHITE</b>	<b>WHITE %</b>	<b>HISP</b>	<b>HISP %</b>	<b>OTHER</b>	<b>OTHER %</b>			
Odessa High School	3496	500	14%	2863	82%	133	4%			
Permian High School	3550	1147	32%	2036	57%	367	10%			
<b>Difference</b>			<b>18.0</b>		<b>24.5</b>		<b>6.5</b>			
<b>HS Averages</b>			<b>23%</b>		<b>70%</b>		<b>7%</b>			
<b>Totals</b>	7046	1647		4899		500				
<b>DIVERSITY INDICES</b>			<b>1</b>		<b>2</b>		<b>3</b>			
Total does not include Alt Center, Youth Center or Regional Day School for Deaf.										
Total does include eligibility 0 students.										
Numbers reflect campus of enrollment on October 2013.										

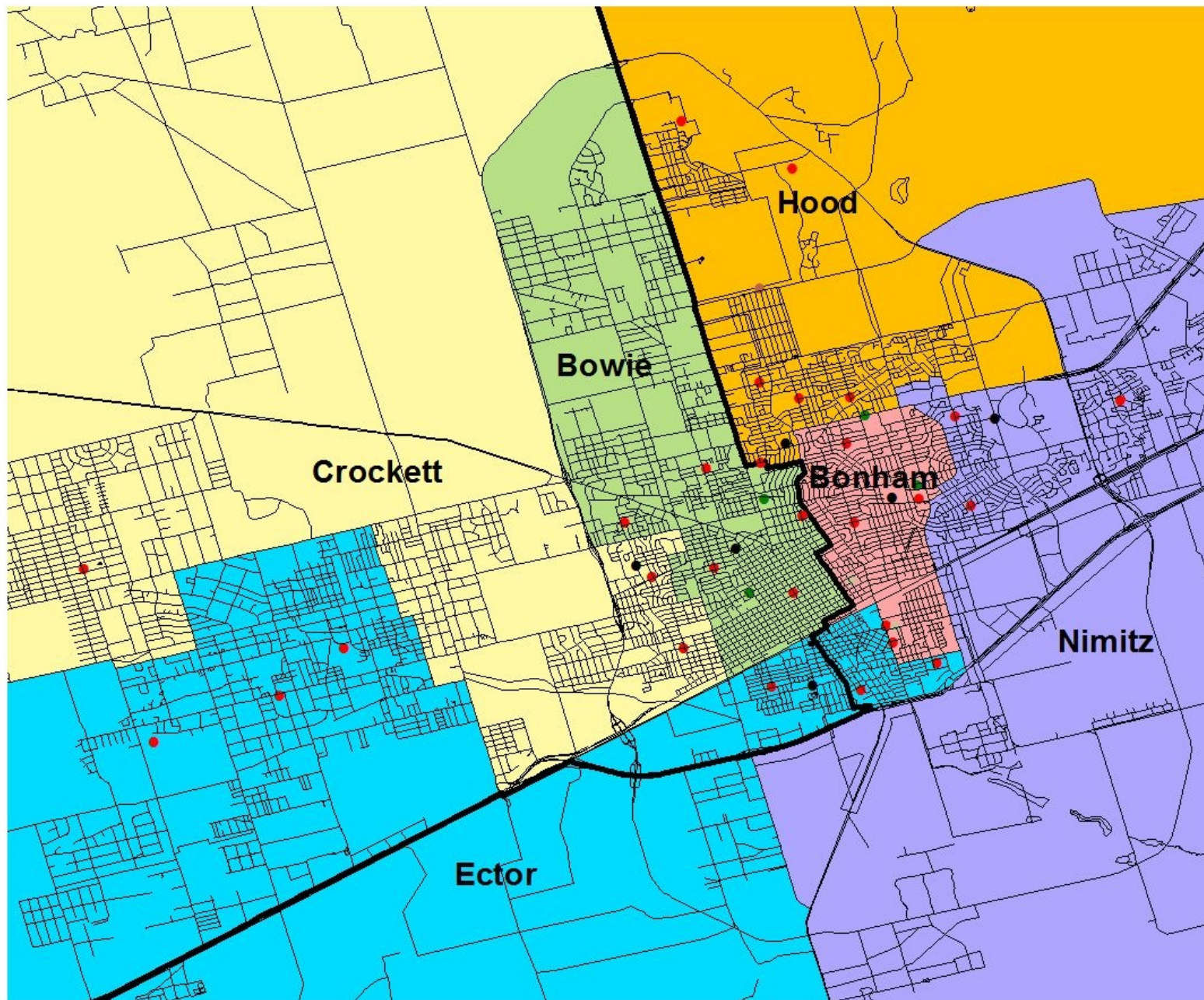


# Appendix A



- Roads
- All Schools**
- ELEM
- HS
- MS
- PK
- ALT
- District**
- 1 Bonham
- 2 Bowie
- 3 Crockett
- 4 Ector
- 5 Hood
- 6 Nimitz

# Existing Junior High Boundaries



- Roads
- School Levels**
- ELEM
- HS
- MS
- PK
- ALT
- HS Plan B1 Bound
- District**
- UnAssigned
- 1 Bonham
- 2 Bowie
- 3 Crockett
- 4 Ector
- 5 Hood
- 6 Nimitz

# Draft Middle School Plan C1 w/ HS Plan B1



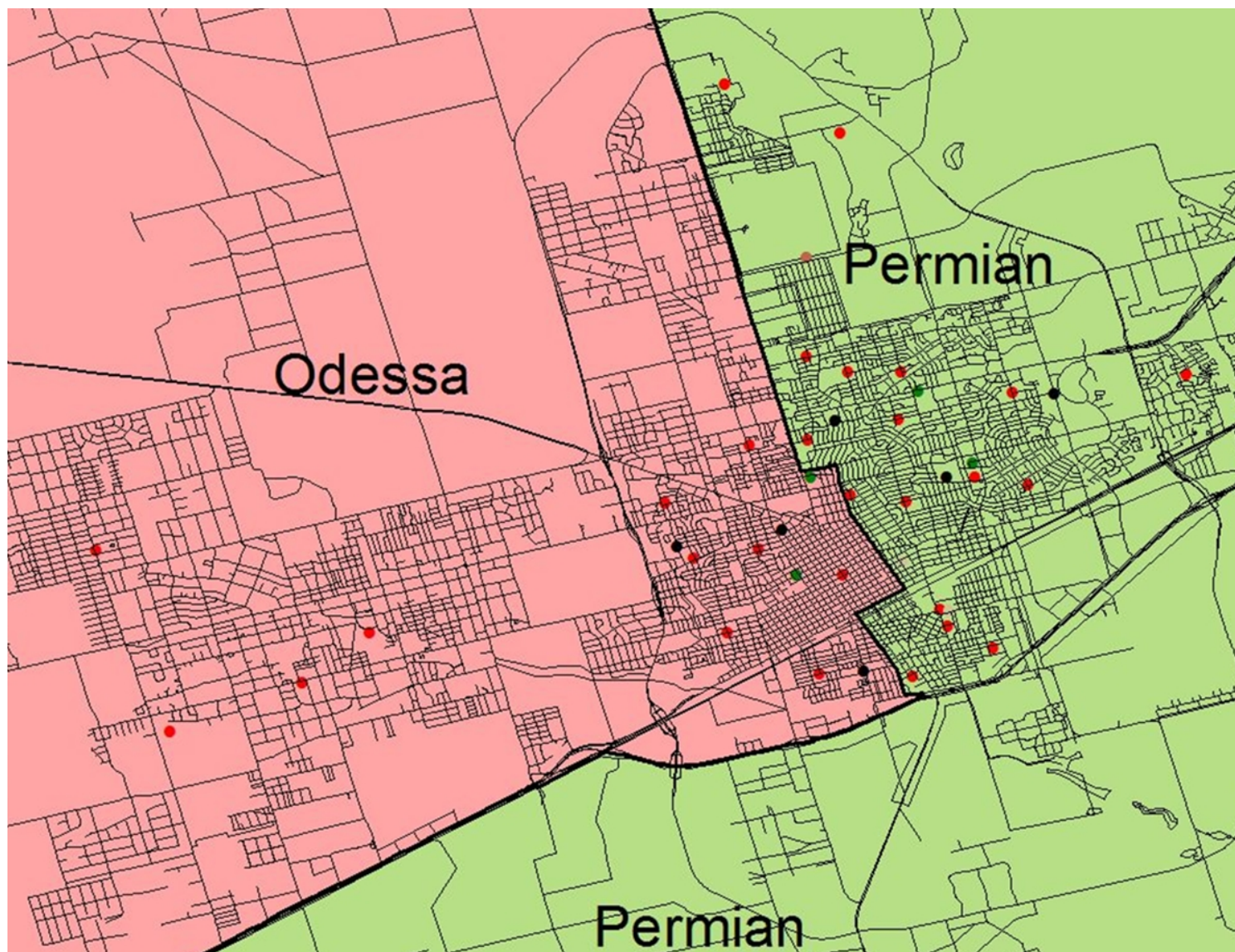
**MIDDLE SCHOOL PLAN C1**

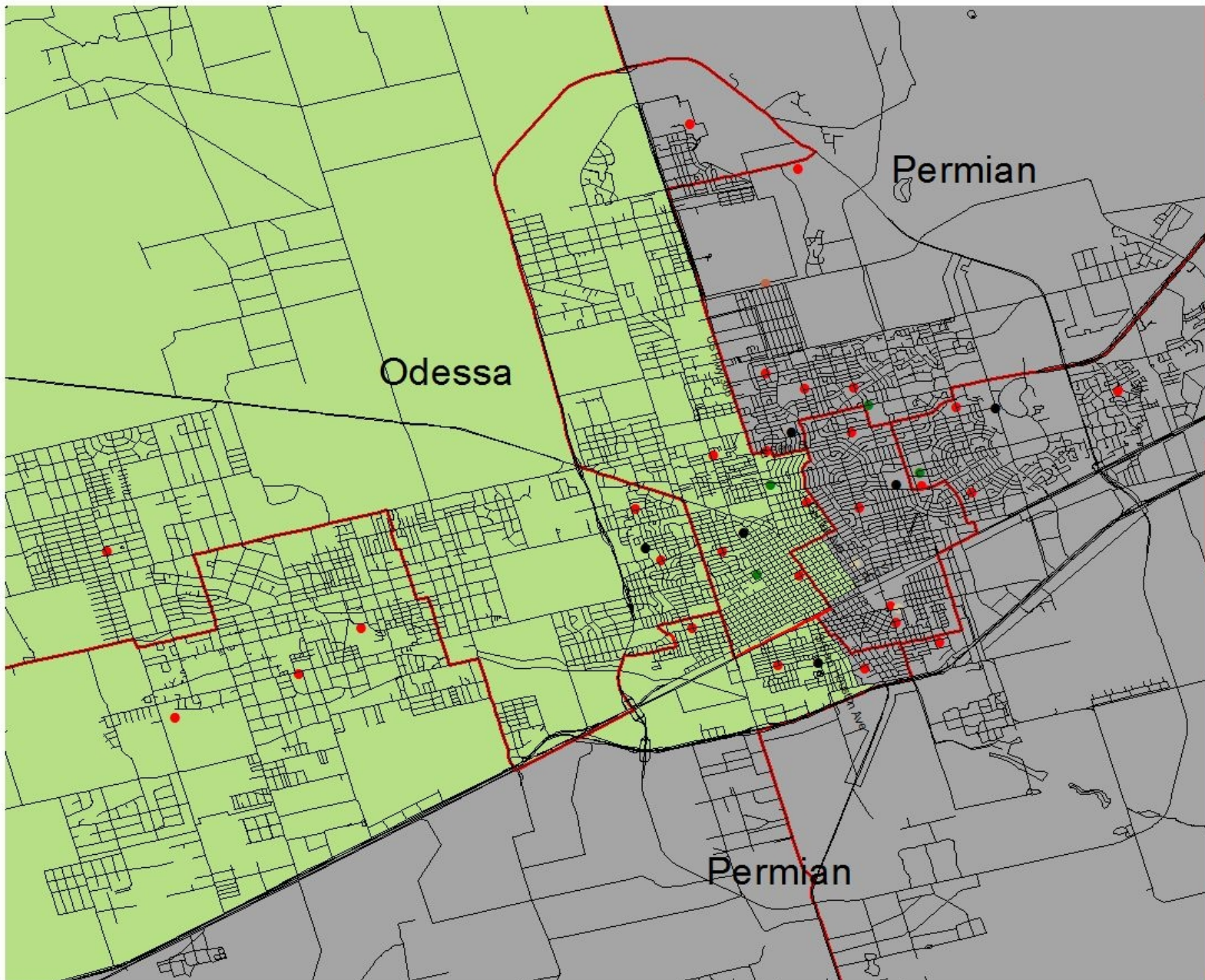
MAP CODE	SCHOOL/ CAMPUS	Total Classroom Seats Available	Campus Utilization Rate	Campus Planning Capacity	Neighborhd Students by <i>MS Plan C1</i>	% Neighborhd Seats Planned
1	BONHAM	1128	88%	996	1001	100%
2	BOWIE	1444	88%	1275	1254	98%
3	CROCKETT	1260	88%	1113	1102	99%
4	ECTOR	1848	88%	1632	1637	100%
5	JBHOOD	1095	88%	967	954	99%
6	NIMITZ	1050	88%	927	916	99%
<b>TOTAL NEIGHBORHOOD SEATS CAPACITY</b>				<b>6910</b>	<b>6864</b>	<b>99%</b>

**Feeder Patterns**

<b>Bonham</b>		<b>Crockett</b>	<b>Hood</b>		
	*Blackshear Part		*Cameron Part		*Buice Part
	Burnet		Fly		*Goliad Part
	*Dowling Part		*Noel Part		*Ireland Part
	*Gonzales Part		Pease		*Jordan Part
	*Ireland Part				Ross
	*Sam Houston Part				*Sam Houston Part
<b>Bowie</b>		<b>Ector</b>	<b>Nimitz</b>		
	Burleson		*Blackshear Part		Blanton
	*Dowling Part		*Cameron Part		*Buice Part
	*Goliad Part		Cavazos		*Gonzales Part
	*Jordan Part		*Dowling Part		Johnson
	*Noel Part		Downing		
	*Sam Houston Part		Travis		
	San Jacinto		West		
			Zavala		

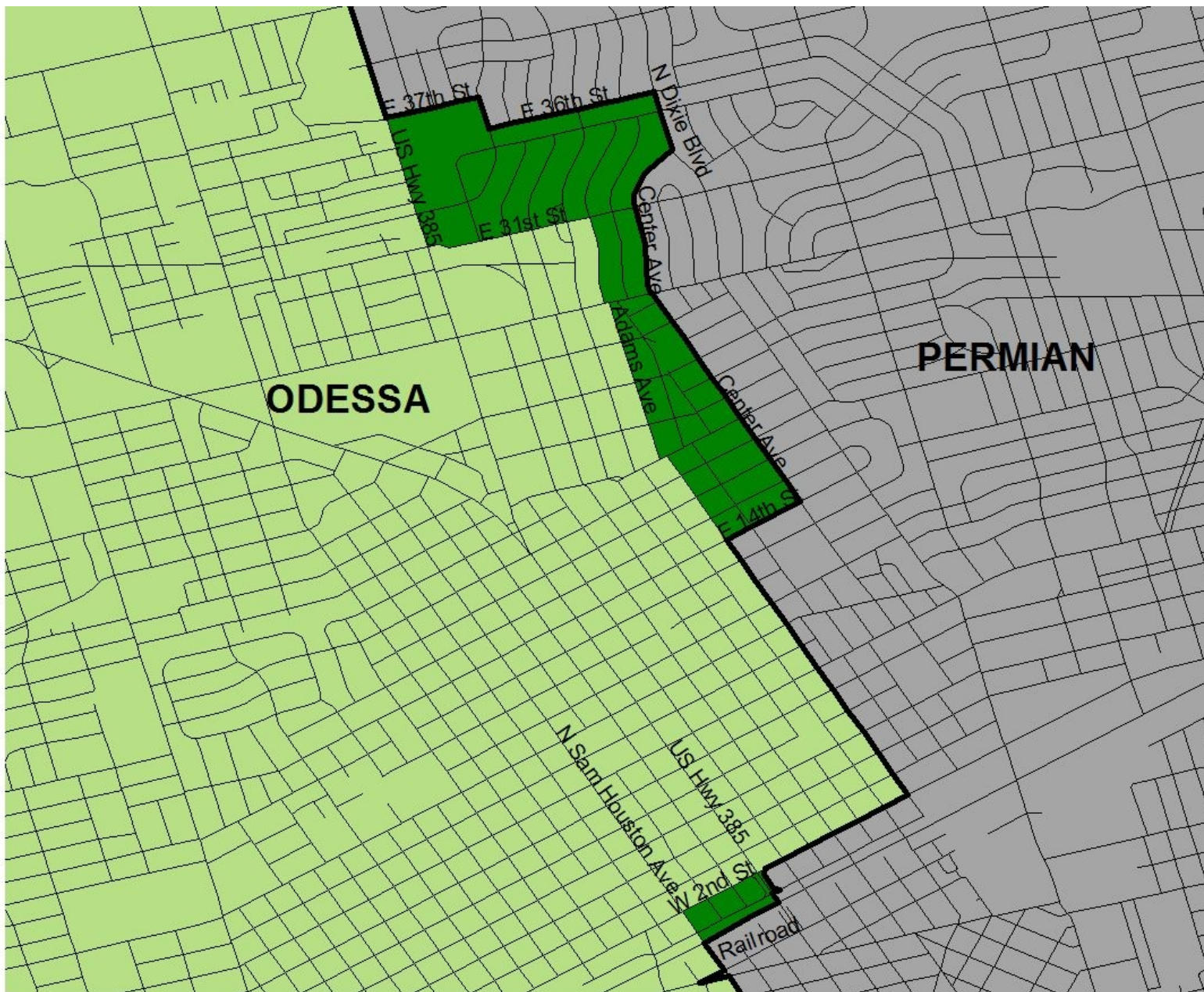
<b>DIVERSITY FACTORS</b>		<b>FACTOR ONE</b>								<b>IN RANGE</b>
<b>MS Plan C1</b>	<b>TOTAL ENROLL</b>	<b>ECO DIS</b>	<b>EC %</b>	<b>LEP</b>	<b>LEP %</b>	<b>SPEC ED</b>	<b>SE %</b>	<b>GT</b>	<b>GT %</b>	
Bonham Jr. High	1001	508	51%	118	12%	76	8%	105	10%	4
Bowie Jr. High	1254	750	60%	222	18%	129	10%	95	8%	4
Crockett Jr. High	1102	639	58%	258	23%	122	11%	72	7%	4
Ector Jr. High	1637	1054	64%	461	28%	140	9%	104	6%	1
Hood Jr. High	954	344	36%	66	7%	65	7%	111	12%	2
Nimitz Jr. High	916	275	30%	70	8%	57	6%	127	14%	1
<b>Junior High Averages</b>			<b>50%</b>		<b>16%</b>		<b>8%</b>		<b>9%</b>	
<b>Totals</b>	<b>6864</b>	<b>3570</b>		<b>1195</b>		<b>589</b>		<b>614</b>		
<b>DIVERSITY INDICES</b>			<b>1</b>		<b>2</b>		<b>3</b>		<b>4</b>	<b>TLT</b>
<b>Standard Deviation</b>		<b>+/-</b>	<b>12.7%</b>	<b>+/-</b>	<b>7.9%</b>	<b>+/-</b>	<b>1.8%</b>	<b>+/-</b>	<b>2.8%</b>	
<b>LOWER BOUNDS</b>			<b>37%</b>		<b>8%</b>		<b>7%</b>		<b>7%</b>	
<b>UPPER BOUNDS</b>			<b>62%</b>		<b>24%</b>		<b>10%</b>		<b>12%</b>	
<b>DIVERSITY FACTORS</b>		<b>FACTOR TWO</b>						<b>IN RANGE</b>	<b>RANK</b>	
<b>MS Plan C1</b>	<b>TOTAL ENROLL</b>	<b>WHITE</b>	<b>WHITE %</b>	<b>HISP</b>	<b>HISP %</b>	<b>OTHER</b>	<b>OTHER %</b>			
Bonham Jr. High	1001	228	23%	668	67%	105	10%	3	7	
Bowie Jr. High	1254	209	17%	982	78%	63	5%	3	7	
Crockett Jr. High	1102	163	15%	903	82%	36	3%	2	6	
Ector Jr. High	1637	155	9%	1402	86%	80	5%	1	2	
Hood Jr. High	954	343	36%	522	55%	89	9%	1	3	
Nimitz Jr. High	916	334	36%	483	53%	99	11%	0	1	
<b>Junior High Averages</b>			<b>23%</b>		<b>70%</b>		<b>7%</b>			
<b>Totals</b>	<b>6864</b>	<b>1432</b>		<b>4960</b>		<b>472</b>			<b>4.333</b>	
<b>DIVERSITY INDICES</b>			<b>1</b>		<b>2</b>		<b>3</b>		<b>TLT</b>	
<b>Standard Deviation</b>		<b>+/-</b>	<b>10.3%</b>	<b>+/-</b>	<b>12.9%</b>	<b>+/-</b>	<b>3.0%</b>			
<b>LOWER BOUNDS</b>			<b>12%</b>		<b>57%</b>		<b>4%</b>			
<b>UPPER BOUNDS</b>			<b>33%</b>		<b>83%</b>		<b>10%</b>			
Total does include eligibility 0 students.										
Numbers reflect campus of enrollment on October,2013. These numbers do not reflect the attendance zone of the student address.										





- Roads
- School Levels**
- ELEM
- HS
- MS
- PK
- ALT
- MS Plan A
- District**
- UnAssigned
- 1 Odessa
- 2 Permian

# Draft High School Plan B1



ECISD  
Johnston & Associates  
9/9/2014

Draft HS Plan B1: Areas Moved from Permian to Odessa

7/31/2014

**HIGH SCHOOL PLAN B1**

MAP CODE	SCHOOL/ CAMPUS	Total Classroom Seats Available	Campus Utilization Rate	Campus Planning Capacity	Neighborhood Students by <i>HS Plan B1</i>	% Neighborhood Seats Planned
1	Odessa High	4078	90%	3680	3618	98%
2	Permian High	3770	90%	3401	3428	101%
<b>TOTAL NEIGHBORHOOD SEATS CAPACITY</b>				<b>7081</b>	<b>7046</b>	<b>100%</b>

**FEEDER PATTERNS**

***Odessa High School***

Bonham - Partial

Bowie - Partial

Crockett

Ector - Partial

***Permian High School***

Bonham - Partial

Bowie - Partial

Ector - Partial

Hood

Nimitz

<b>DIVERSITY FACTORS</b>		<b>FACTOR ONE</b>								
<b>HS Plan B1</b>	<b>TOTAL ENROL</b>	<b>ECO DIS</b>	<b>EC %</b>	<b>LEP</b>	<b>LEP %</b>	<b>SPEC ED</b>	<b>SE %</b>	<b>GT</b>	<b>GT %</b>	
Odessa High School	3618	1597	44%	418	12%	324	9%	233	6%	
Permian High School	3428	978	29%	178	5%	275	8%	386	11%	
<b>Difference</b>			<b>15.6</b>		<b>6.4</b>		<b>0.9</b>		<b>4.8</b>	
<b>HS Averages</b>			<b>36%</b>		<b>8%</b>		<b>8%</b>		<b>9%</b>	
<b>Totals</b>	7046	2575		596		599		619		
<b>DIVERSITY INDICES</b>			<b>1</b>		<b>2</b>		<b>3</b>		<b>4</b>	
<b>DIVERSITY FACTORS</b>		<b>FACTOR TWO</b>								
<b>HS Plan B1</b>	<b>TOTAL ENROL</b>	<b>WHITE</b>	<b>WHITE %</b>	<b>HISP</b>	<b>HISP %</b>	<b>OTHER</b>	<b>OTHER %</b>			
Odessa High School	3618	510	14%	2963	82%	145	4%			
Permian High School	3428	1137	33%	1936	56%	355	10%			
<b>Difference</b>			<b>19.1</b>		<b>25.4</b>		<b>6.3</b>			
<b>HS Averages</b>			<b>24%</b>		<b>69%</b>		<b>7%</b>			
<b>Totals</b>	7046	1647		4899		500				
<b>DIVERSITY INDICES</b>			<b>1</b>		<b>2</b>		<b>3</b>			
Total does not include Alt Center, Youth Center or Regional Day School for Deaf.										
Total does include eligibility 0 students.										
Numbers reflect campus of enrollment on October 2013.										