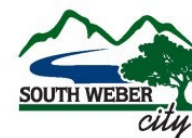
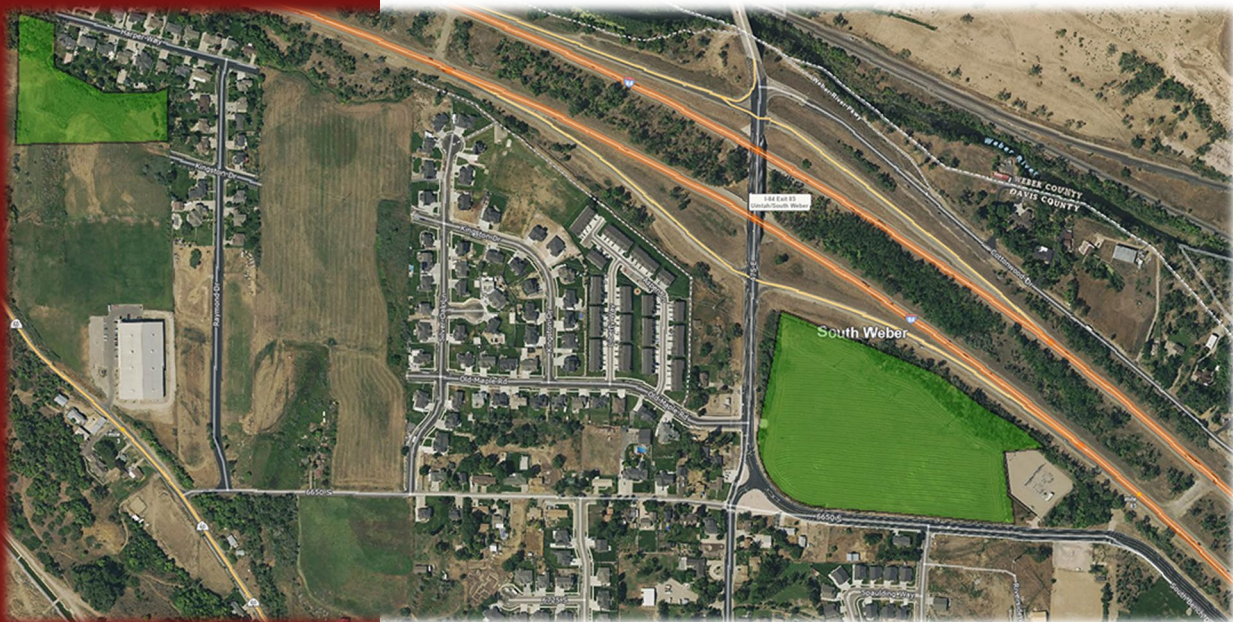


# Old Fort Community Reinvestment Area

DRAFT Project Area Budget



August 2024



ZIONS PUBLIC FINANCE, INC.

## Table of Contents

---

Background and Overview.....	2
1(a). The Base Taxable Value [17C-5-303(1)(a)].....	2
1(b). Projected Amount of Tax Increment to be Generated Within the Project Area [17C-5-303(1)(b)] .....	2
1(c). Project Area Funds Collection Period [17C-5-303(1)(c)].....	3
1(d). Projected Amount of Tax Increment to be Paid to Other Taxing Entities [17C-5-303(1)(d)] .....	3
1(e). If the Area From Which Tax Increment is Collected is Less Than the Entire Project Area [17C-5-303(1)(e)] .....	3
1(f). The Percentage of Tax Increment the Agency is Authorized to Receive [17C-5-303(1)(f)] .....	3
1(g). The Maximum Cumulative Dollar Amount of Tax Increment the Agency is Authorized to Receive from the Project Area [17C-5-303(1)(g)] .....	4
2. If the Agency Receives Sales and Use Tax Revenue [17C-5-303(2)(a) and (b)].....	4
3. Amount of Project Area Funds the Agency Will Use to Implement the Project Area [17C-5-303(3)] .....	4
4. The Agency’s Combined Incremental Value [17C-5-303(4)] .....	4
5. The Amount of Project Area Funds That Will Be Used to Cover the Cost of Administering the Project Area [17C-5-303(5)].....	5
6. For Property That the Agency Owns and Expects to Sell, the Expected Total Cost of the Property to the Agency and the Expected Sale Price [17C-5-303(6)].....	5
Appendix A: Multi-Year Budget .....	6

## Background and Overview

The following narrative has been prepared in accordance with Utah Code §17C-5-303 for an Agency that receives tax increment.

This Budget is prepared in good faith as a current reasonable estimate of the economic impact of projected development and redevelopment within the Project Area. Fundamental economic and other circumstances may influence the actual impact. With these assumptions, the information contained within this Budget represents the reasonable expectations of the Agency. The Agency makes no guarantee that the projections contained in this Budget of the Project Area Plan for the Project Area accurately reflect the future development and/or redevelopment within the Project Area. Further, the Agency specifically reserves all powers granted to it under the Act, now and as may be amended; this Budget shall not be interpreted to limit or restrict the powers of the Agency as granted by the Act. The actual amount of tax increment received by the Agency will be determined solely by interlocal agreement(s) between the Agency and the various taxing entities; this Budget does not control the flow of tax increment money, nor does it entitle the Agency to receive money from tax increment or any other source.

### 1(a). The Base Taxable Value [17C-5-303(1)(a)]

The base taxable value is the year 2023 value of \$1,677,304.

### 1(b). Projected Amount of Tax Increment to be Generated Within the Project Area [17C-5-303(1)(b)]

The projected amount of tax increment to be generated within the Project Area over 10 years is over \$950,000.

TABLE 1: INCREMENTAL PROPERTY TAX REVENUES FOR 10 YEARS

Taxing Entity	2023 Tax Rates	Total	NPV*
Davis County	0.001152	\$98,173	\$75,844
Multicounty Assessing & Collecting Levy	0.000015	\$1,278	\$988
County Assessing & Collecting Levy	0.000131	\$11,164	\$8,625
Davis County School District	0.006228	\$530,750	\$410,029
South Weber City	0.001330	\$226,685	\$175,125
Weber Basin Water Conservancy District	0.000200	\$17,044	\$13,167
Davis County Mosquito Abatement District	0.000098	\$8,352	\$6,452
Central Weber Sewer Improvement District	0.000523	\$44,570	\$34,432
County Library	0.000234	\$19,941	\$15,406
<b>Total</b>	<b>0.009911</b>	<b>\$957,957</b>	<b>\$740,067</b>

\*NPV = net present value discounted at 5 percent.

**1(c). Project Area Funds Collection Period [17C-5-303(1)(c)]**

The anticipated collection period is 10 years.

**1(d). Projected Amount of Tax Increment to be Paid to Other Taxing Entities [17C-5-303(1)(d)]**

The Agency is requesting 100 percent of the incremental tax revenue from South Weber City, and 50 percent of the incremental tax revenue from the remaining entities. Therefore, there is a projected amount of incremental tax revenue to be paid to the taxing entities over 10 years. The taxing entities will continue to receive the full amount of property tax revenues generated by the current base taxable value.

**TABLE 2: INCREMENTAL PROPERTY TAX REVENUES PAID TO TAXING ENTITIES FOR 10 YEARS**

<b>Taxing Entity</b>	<b>2023 Tax Rates</b>	<b>Total</b>	<b>NPV*</b>
Davis County	0.001152	\$98,173	\$75,844
Multicounty Assessing & Collecting Levy	0.000015	\$1,278	\$988
County Assessing & Collecting Levy	0.000131	\$11,164	\$8,625
Davis County School District	0.006228	\$530,750	\$410,029
South Weber City	0.001330	\$0	\$0
Weber Basin Water Conservancy District	0.000200	\$17,044	\$13,167
Davis County Mosquito Abatement District	0.000098	\$8,352	\$6,452
Central Weber Sewer Improvement District	0.000523	\$44,570	\$34,432
County Library	0.000234	\$19,941	\$15,406
<b>Total</b>	<b>0.009911</b>	<b>\$731,272</b>	<b>\$564,942</b>

\*NPV = net present value discounted at 5 percent.

**1(e). If the Area From Which Tax Increment is Collected is Less Than the Entire Project Area [17C-5-303(1)(e)]**

Not applicable.

**1(f). The Percentage of Tax Increment the Agency is Authorized to Receive [17C-5-303(1)(f)]**

The percentage of tax increment that the Agency is authorized to receive will be established by the interlocal agreements between the Agency and the various taxing entities. The Agency anticipates requesting 100 percent participation from South Weber City and 50 percent participation from the remaining taxing entities for a period of up to 10 years.

### 1(g). The Maximum Cumulative Dollar Amount of Tax Increment the Agency is Authorized to Receive from the Project Area [17C-5-303(1)(g)]

The maximum amount of tax increment the Agency is authorized to receive will be dictated by the interlocal agreements between the Agency and the various taxing entities. The Agency anticipates requesting a maximum amount of approximately \$957,957. The Agency intends to place limits on the total tax increment that flows to the agency within the interlocal agreements with individual taxing entities. Those limits are listed in the following table.

TABLE 3: CAP ON TAX INCREMENT TO AGENCY

Taxing Entity	Total Tax Increment Allowable
Davis County	\$98,173
Multicounty Assessing & Collecting Levy	\$1,278
County Assessing & Collecting Levy	\$11,164
Davis County School District	\$530,750
South Weber City	\$226,685
Weber Basin Water Conservancy District	\$17,044
Davis County Mosquito Abatement District	\$8,352
Central Weber Sewer Improvement District	\$44,570
County Library	\$19,941
<b>Total</b>	<b>\$957,957</b>

### 2. If the Agency Receives Sales and Use Tax Revenue [17C-5-303(2)(a) and (b)]

Not applicable.

### 3. Amount of Project Area Funds the Agency Will Use to Implement the Project Area [17C-5-303(3)]

The Agency estimates that its funds will be used as follows but reserves the right to maintain flexibility with the funds and not to adhere strictly to the items listed below. All Agency funds will be used for infrastructure, administrative or economic development purposes within the Project Area. Administrative funds have been calculated based on 2 percent of Agency tax increment receipts annually. In addition, ten percent of Agency receipts, in years where total increment exceeds \$100,000, have been set aside for housing projects. Housing funds do not need to be spent within the Project Area. The remaining funds are allocated primarily for possible improvements as follows:

- Roadway and utility infrastructure
- Incentives for business location or relocation

### 4. The Agency’s Combined Incremental Value [17C-5-303(4)]

The total incremental value of the Agency is currently \$0.

## **5. The Amount of Project Area Funds That Will Be Used to Cover the Cost of Administering the Project Area [17C-5-303(5)]**

---

The Agency is requesting that 2.5 percent of revenues received be set aside for administrative purposes. The projected total amount of administrative costs over the 10-year timeframe is \$23,949. In addition, Davis County is requesting to receive back 2.5 percent of their contributed revenues for their administrative costs. This will include incremental revenue from Davis County and the Davis County Library. The projected total amount of these administrative costs over the 10-year timeframe is \$2,655.

## **6. For Property That the Agency Owns and Expects to Sell, the Expected Total Cost of the Property to the Agency and the Expected Sale Price [17C-5-303(6)]**

---

The Agency does not currently own any property in the project area.

DRAFT

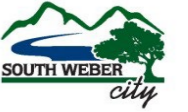


## Appendix A: Multi-Year Budget

---

DRAFT

**South Weber Community Development and Renewal Agency**  
**Old Fort Community Reinvestment Area**  
**Projected Multi-Year Budget**



<b>Valuation Analysis &amp; Base Year Tax Revenue</b>												
RDA Fiscal Year	Project Years	10	1	2	3	4	5	6	7	8	9	10
Tax Increment Year			2025	2026	2027	2028	2029	2030	2031	2032	2033	2034
			2024	2025	2026	2027	2028	2029	2030	2031	2032	2033
Total Base Year Value			\$1,677,304	\$1,677,304	\$1,677,304	\$1,677,304	\$1,677,304	\$1,677,304	\$1,677,304	\$1,677,304	\$1,677,304	\$1,677,304
Total Assessed Value			\$18,890,405	\$18,812,823	\$18,740,470	\$18,700,455	\$18,682,259	\$18,677,304	\$18,677,304	\$18,677,304	\$18,677,304	\$18,677,304
<b>Total Incremental Value</b>			<b>\$17,213,101</b>	<b>\$17,135,519</b>	<b>\$17,063,166</b>	<b>\$17,023,151</b>	<b>\$17,004,955</b>	<b>\$17,000,000</b>	<b>\$17,000,000</b>	<b>\$17,000,000</b>	<b>\$17,000,000</b>	<b>\$17,000,000</b>

<b>Base Year Tax Revenues to Taxing Entities</b>												
	2023 Tax Rate	Total	NPV									
Davis County	0.001152	\$19,323	\$14,920	\$1,932	\$1,932	\$1,932	\$1,932	\$1,932	\$1,932	\$1,932	\$1,932	\$1,932
Multicounty Assessing & Collecting Levy	0.000015	\$252	\$194	\$25	\$25	\$25	\$25	\$25	\$25	\$25	\$25	\$25
County Assessing & Collecting Levy	0.000131	\$2,197	\$1,697	\$220	\$220	\$220	\$220	\$220	\$220	\$220	\$220	\$220
Davis County School District	0.006228	\$104,462	\$80,663	\$10,446	\$10,446	\$10,446	\$10,446	\$10,446	\$10,446	\$10,446	\$10,446	\$10,446
South Weber City	0.001330	\$22,308	\$17,226	\$2,231	\$2,231	\$2,231	\$2,231	\$2,231	\$2,231	\$2,231	\$2,231	\$2,231
Weber Basin Water Conservancy District	0.000200	\$3,355	\$2,590	\$335	\$335	\$335	\$335	\$335	\$335	\$335	\$335	\$335
Davis County Mosquito Abatement District	0.000098	\$1,644	\$1,269	\$164	\$164	\$164	\$164	\$164	\$164	\$164	\$164	\$164
Central Weber Sewer Improvement District	0.000523	\$8,772	\$6,774	\$877	\$877	\$877	\$877	\$877	\$877	\$877	\$877	\$877
County Library	0.000234	\$3,925	\$3,031	\$392	\$392	\$392	\$392	\$392	\$392	\$392	\$392	\$392
<b>Total</b>	<b>0.009911</b>	<b>\$166,238</b>	<b>\$128,364</b>	<b>\$16,624</b>	<b>\$16,624</b>	<b>\$16,624</b>	<b>\$16,624</b>	<b>\$16,624</b>	<b>\$16,624</b>	<b>\$16,624</b>	<b>\$16,624</b>	<b>\$16,624</b>

<b>Participation Rates</b>												
Davis County	50%	50%	50%	50%	50%	50%	50%	50%	50%	50%	50%	50%
Multicounty Assessing & Collecting Levy	50%	50%	50%	50%	50%	50%	50%	50%	50%	50%	50%	50%
County Assessing & Collecting Levy	50%	50%	50%	50%	50%	50%	50%	50%	50%	50%	50%	50%
Davis County School District	50%	50%	50%	50%	50%	50%	50%	50%	50%	50%	50%	50%
South Weber City	100%	100%	100%	100%	100%	100%	100%	100%	100%	100%	100%	100%
Weber Basin Water Conservancy District	50%	50%	50%	50%	50%	50%	50%	50%	50%	50%	50%	50%
Davis County Mosquito Abatement District	50%	50%	50%	50%	50%	50%	50%	50%	50%	50%	50%	50%
Central Weber Sewer Improvement District	50%	50%	50%	50%	50%	50%	50%	50%	50%	50%	50%	50%
County Library	50%	50%	50%	50%	50%	50%	50%	50%	50%	50%	50%	50%

<b>Tax Increment Calculations</b>													
RDA Fiscal Year				2025	2026	2027	2028	2029	2030	2031	2032	2033	2034
Tax Increment Year				2024	2025	2026	2027	2028	2029	2030	2031	2032	2033
Total Incremental Revenues	2023 Tax Rate	Total	NPV										
Davis County	0.001152	\$196,347	\$151,687	\$19,829	\$19,740	\$19,657	\$19,611	\$19,590	\$19,584	\$19,584	\$19,584	\$19,584	\$19,584
Multicounty Assessing & Collecting Levy	0.000015	\$2,557	\$1,975	\$258	\$257	\$256	\$255	\$255	\$255	\$255	\$255	\$255	\$255
County Assessing & Collecting Levy	0.000131	\$22,328	\$17,249	\$2,255	\$2,245	\$2,235	\$2,230	\$2,228	\$2,227	\$2,227	\$2,227	\$2,227	\$2,227
Davis County School District	0.006228	\$1,061,500	\$820,059	\$107,203	\$106,720	\$106,269	\$106,020	\$105,907	\$105,876	\$105,876	\$105,876	\$105,876	\$105,876
South Weber City	0.001330	\$226,685	\$175,125	\$22,893	\$22,790	\$22,694	\$22,641	\$22,617	\$22,610	\$22,610	\$22,610	\$22,610	\$22,610
Weber Basin Water Conservancy District	0.000200	\$34,088	\$26,335	\$3,443	\$3,427	\$3,413	\$3,405	\$3,401	\$3,400	\$3,400	\$3,400	\$3,400	\$3,400
Davis County Mosquito Abatement District	0.000098	\$16,703	\$12,904	\$1,687	\$1,679	\$1,672	\$1,668	\$1,666	\$1,666	\$1,666	\$1,666	\$1,666	\$1,666
Central Weber Sewer Improvement District	0.000523	\$89,140	\$68,865	\$9,002	\$8,962	\$8,924	\$8,903	\$8,894	\$8,891	\$8,891	\$8,891	\$8,891	\$8,891
County Library	0.000234	\$39,883	\$30,811	\$4,028	\$4,010	\$3,993	\$3,983	\$3,979	\$3,978	\$3,978	\$3,978	\$3,978	\$3,978
<b>Total</b>	<b>0.009911</b>	<b>\$1,689,230</b>	<b>\$1,305,010</b>	<b>\$170,599</b>	<b>\$169,830</b>	<b>\$169,113</b>	<b>\$168,716</b>	<b>\$168,536</b>	<b>\$168,487</b>	<b>\$168,487</b>	<b>\$168,487</b>	<b>\$168,487</b>	<b>\$168,487</b>



**Tax Increment Calculations**

RDA Fiscal Year				2025	2026	2027	2028	2029	2030	2031	2032	2033	2034
Tax Increment Year				2024	2025	2026	2027	2028	2029	2030	2031	2032	2033
Incremental Tax Revenues to Taxing Entities	2023 Tax Rate	Total	NPV										
Davis County	0.001152	\$98,173	\$75,844	\$9,915	\$9,870	\$9,828	\$9,805	\$9,795	\$9,792	\$9,792	\$9,792	\$9,792	\$9,792
Multicounty Assessing & Collecting Levy	0.000015	\$1,278	\$988	\$129	\$129	\$128	\$128	\$128	\$128	\$128	\$128	\$128	\$128
County Assessing & Collecting Levy	0.000131	\$11,164	\$8,625	\$1,127	\$1,122	\$1,118	\$1,115	\$1,114	\$1,114	\$1,114	\$1,114	\$1,114	\$1,114
Davis County School District	0.006228	\$530,750	\$410,029	\$53,602	\$53,360	\$53,135	\$53,010	\$52,953	\$52,938	\$52,938	\$52,938	\$52,938	\$52,938
South Weber City	0.001330	\$0	\$0	\$0	\$0	\$0	\$0	\$0	\$0	\$0	\$0	\$0	\$0
Weber Basin Water Conservancy District	0.000200	\$17,044	\$13,167	\$1,721	\$1,714	\$1,706	\$1,702	\$1,700	\$1,700	\$1,700	\$1,700	\$1,700	\$1,700
Davis County Mosquito Abatement District	0.000098	\$8,352	\$6,452	\$843	\$840	\$836	\$834	\$833	\$833	\$833	\$833	\$833	\$833
Central Weber Sewer Improvement District	0.000523	\$44,570	\$34,432	\$4,501	\$4,481	\$4,462	\$4,452	\$4,447	\$4,446	\$4,446	\$4,446	\$4,446	\$4,446
County Library	0.000234	\$19,941	\$15,406	\$2,014	\$2,005	\$1,996	\$1,992	\$1,990	\$1,989	\$1,989	\$1,989	\$1,989	\$1,989
<b>Total</b>	<b>0.009911</b>	<b>\$731,272</b>	<b>\$564,942</b>	<b>\$73,853</b>	<b>\$73,520</b>	<b>\$73,210</b>	<b>\$73,038</b>	<b>\$72,960</b>	<b>\$72,939</b>	<b>\$72,939</b>	<b>\$72,939</b>	<b>\$72,939</b>	<b>\$72,939</b>
Incremental Tax Revenues to Agency	2023 Tax Rate	Total	NPV										
Davis County	0.001152	\$98,173	\$75,844	\$9,915	\$9,870	\$9,828	\$9,805	\$9,795	\$9,792	\$9,792	\$9,792	\$9,792	\$9,792
Multicounty Assessing & Collecting Levy	0.000015	\$1,278	\$988	\$129	\$129	\$128	\$128	\$128	\$128	\$128	\$128	\$128	\$128
County Assessing & Collecting Levy	0.000131	\$11,164	\$8,625	\$1,127	\$1,122	\$1,118	\$1,115	\$1,114	\$1,114	\$1,114	\$1,114	\$1,114	\$1,114
Davis County School District	0.006228	\$530,750	\$410,029	\$53,602	\$53,360	\$53,135	\$53,010	\$52,953	\$52,938	\$52,938	\$52,938	\$52,938	\$52,938
South Weber City	0.001330	\$226,685	\$175,125	\$22,893	\$22,790	\$22,694	\$22,641	\$22,617	\$22,610	\$22,610	\$22,610	\$22,610	\$22,610
Weber Basin Water Conservancy District	0.000200	\$17,044	\$13,167	\$1,721	\$1,714	\$1,706	\$1,702	\$1,700	\$1,700	\$1,700	\$1,700	\$1,700	\$1,700
Davis County Mosquito Abatement District	0.000098	\$8,352	\$6,452	\$843	\$840	\$836	\$834	\$833	\$833	\$833	\$833	\$833	\$833
Central Weber Sewer Improvement District	0.000523	\$44,570	\$34,432	\$4,501	\$4,481	\$4,462	\$4,452	\$4,447	\$4,446	\$4,446	\$4,446	\$4,446	\$4,446
County Library	0.000234	\$19,941	\$15,406	\$2,014	\$2,005	\$1,996	\$1,992	\$1,990	\$1,989	\$1,989	\$1,989	\$1,989	\$1,989
<b>Total</b>	<b>0.009911</b>	<b>\$957,957</b>	<b>\$740,067</b>	<b>\$96,746</b>	<b>\$96,310</b>	<b>\$95,904</b>	<b>\$95,679</b>	<b>\$95,576</b>	<b>\$95,549</b>	<b>\$95,549</b>	<b>\$95,549</b>	<b>\$95,549</b>	<b>\$95,549</b>

<b>Agency Budget</b>												
<b>RDA Fiscal Year</b>			<b>2025</b>	<b>2026</b>	<b>2027</b>	<b>2028</b>	<b>2029</b>	<b>2030</b>	<b>2031</b>	<b>2032</b>	<b>2033</b>	<b>2034</b>
<b>Tax Increment Year</b>			<b>2024</b>	<b>2025</b>	<b>2026</b>	<b>2027</b>	<b>2028</b>	<b>2029</b>	<b>2030</b>	<b>2031</b>	<b>2032</b>	<b>2033</b>
<b>Revenues</b>												
<b>Incremental Tax Revenues to Agency</b>												
	<b>Total</b>	<b>NPV</b>										
Davis County	\$98,173	\$75,844	\$9,915	\$9,870	\$9,828	\$9,805	\$9,795	\$9,792	\$9,792	\$9,792	\$9,792	\$9,792
Multicounty Assessing & Collecting Levy	\$1,278	\$988	\$129	\$129	\$128	\$128	\$128	\$128	\$128	\$128	\$128	\$128
County Assessing & Collecting Levy	\$11,164	\$8,625	\$1,127	\$1,122	\$1,118	\$1,115	\$1,114	\$1,114	\$1,114	\$1,114	\$1,114	\$1,114
Davis County School District	\$530,750	\$410,029	\$53,602	\$53,360	\$53,135	\$53,010	\$52,953	\$52,938	\$52,938	\$52,938	\$52,938	\$52,938
South Weber City	\$226,685	\$175,125	\$22,893	\$22,790	\$22,694	\$22,641	\$22,617	\$22,610	\$22,610	\$22,610	\$22,610	\$22,610
Weber Basin Water Conservancy District	\$17,044	\$13,167	\$1,721	\$1,714	\$1,706	\$1,702	\$1,700	\$1,700	\$1,700	\$1,700	\$1,700	\$1,700
Davis County Mosquito Abatement District	\$8,352	\$6,452	\$843	\$840	\$836	\$834	\$833	\$833	\$833	\$833	\$833	\$833
Central Weber Sewer Improvement District	\$44,570	\$34,432	\$4,501	\$4,481	\$4,462	\$4,452	\$4,447	\$4,446	\$4,446	\$4,446	\$4,446	\$4,446
County Library	\$19,941	\$15,406	\$2,014	\$2,005	\$1,996	\$1,992	\$1,990	\$1,989	\$1,989	\$1,989	\$1,989	\$1,989
<b>Total</b>	<b>\$957,957</b>	<b>\$740,067</b>	<b>\$96,746</b>	<b>\$96,310</b>	<b>\$95,904</b>	<b>\$95,679</b>	<b>\$95,576</b>	<b>\$95,549</b>	<b>\$95,549</b>	<b>\$95,549</b>	<b>\$95,549</b>	<b>\$95,549</b>
<b>Expenditures</b>												
	<b>Total</b>	<b>NPV</b>										
<i>Redevelopment Agency Administrative Percent</i>			2.5%	2.5%	2.5%	2.5%	2.5%	2.5%	2.5%	2.5%	2.5%	2.5%
Administrative Costs	(\$23,949)	(\$18,502)	(\$2,419)	(\$2,408)	(\$2,398)	(\$2,392)	(\$2,389)	(\$2,389)	(\$2,389)	(\$2,389)	(\$2,389)	(\$2,389)
<i>Davis County Administrative Percent (Library &amp; County)</i>			2.5%	2.5%	2.5%	2.5%	2.5%	2.5%	2.5%	2.5%	2.5%	2.5%
Administrative Costs	(\$2,655)	(\$2,281)	(\$298)	(\$297)	(\$296)	(\$295)	(\$295)	(\$295)	(\$295)	(\$295)	(\$295)	(\$295)
<i>Housing Percent</i>			10.0%	10.0%	10.0%	10.0%	10.0%	10.0%	10.0%	10.0%	10.0%	10.0%
Housing Costs	\$0	\$0	\$0	\$0	\$0	\$0	\$0	\$0	\$0	\$0	\$0	\$0
<b>Remaining Increment for Project Area Development</b>	<b>\$931,056</b>	<b>\$719,284</b>	<b>\$94,029</b>	<b>\$93,606</b>	<b>\$93,210</b>	<b>\$92,992</b>	<b>\$92,892</b>	<b>\$92,865</b>	<b>\$92,865</b>	<b>\$92,865</b>	<b>\$92,865</b>	<b>\$92,865</b>

<b>Cap on Tax Increment to Agency</b>	
Davis County	\$98,173
Multicounty Assessing & Collecting Levy	\$1,278
County Assessing & Collecting Levy	\$11,164
Davis County School District	\$530,750
South Weber City	\$226,685
Weber Basin Water Conservancy District	\$17,044
Davis County Mosquito Abatement District	\$8,352
Central Weber Sewer Improvement District	\$44,570
County Library	\$19,941
<b>Total</b>	<b>\$957,957</b>