

$$F = G \frac{m_1 m_2}{d^2}$$

$$i\hbar \frac{\partial}{\partial t} \psi = \hat{H} \psi$$

$$\phi(x) = \frac{1}{\sqrt{2\pi\sigma}} e^{-\frac{(x-\mu)^2}{2\sigma^2}}$$

$$E = mc^2$$

$$dS \geq 0$$

$$\frac{df}{dt} = \lim_{h \rightarrow 0} \frac{f(t+h) - f(t)}{h}$$

Student Information System (SIS) Modernization

Recommendation for the Next SIS

SIS Review



Process Timeline



Impetus for Change



Recommendation



Anticipated Benefits

Review Team Members

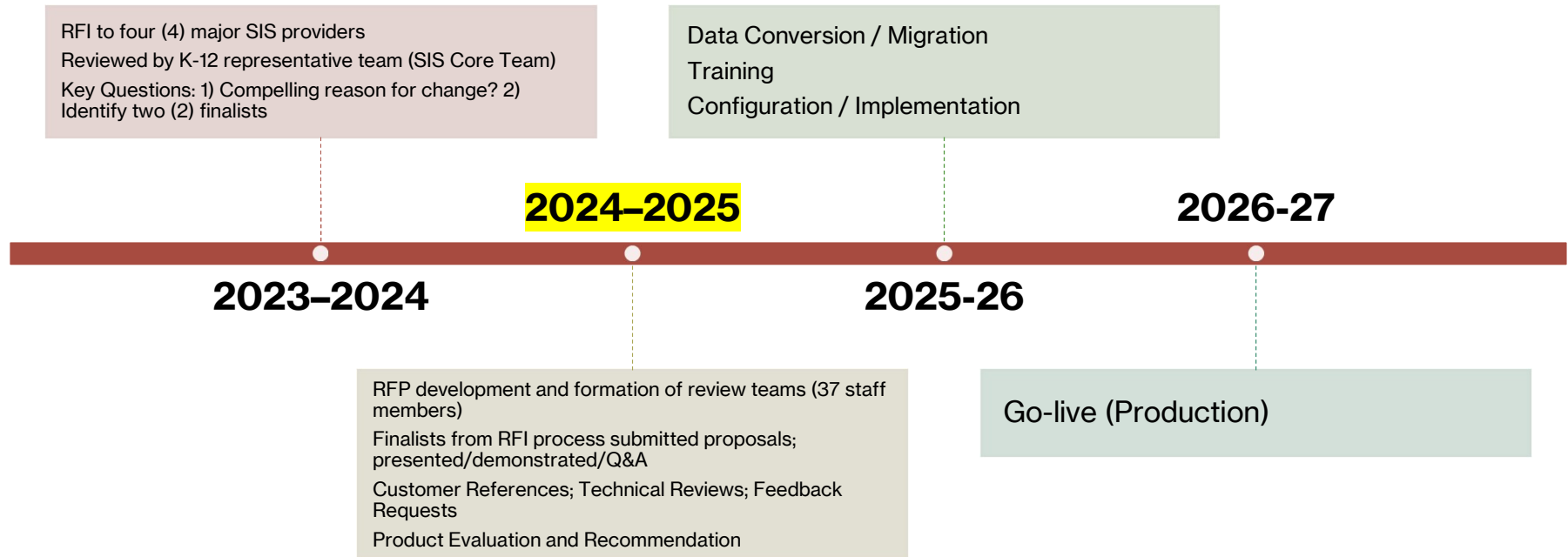
SIS Core Team

- Anne Scalia, George Petmezas, Mike Wilkes, Cathy McKee, Kathy Shabowski, Tim Wyller, Terry Bleau, Nancy Hamilton, Doug Drexler, Jean Alicz, Deb Hanson, Aaron Rosengarn, Candan Spellman

Functional Review Team Members

- Corinne Backman, Andy Rhea, Melissa Groot, Julie Eiss, Elodie Colin, Nicolette Pollack, Joe Neukirch, Olivia Bennett, Erin Connolly, Lisa Gratz, Laura Essex, Linda Odom, Lucas Rojas, Mark Pool, Zach Evans, Laurie Perry, Jay Fontanetta, Kim Lee, Matt Gain, Diana Neukirch, Liz Cannon, Rich Martin, Jennifer Main, Sandy Riley

Timeline



Impetus for Change?

Current SIS Product Growth +
Life

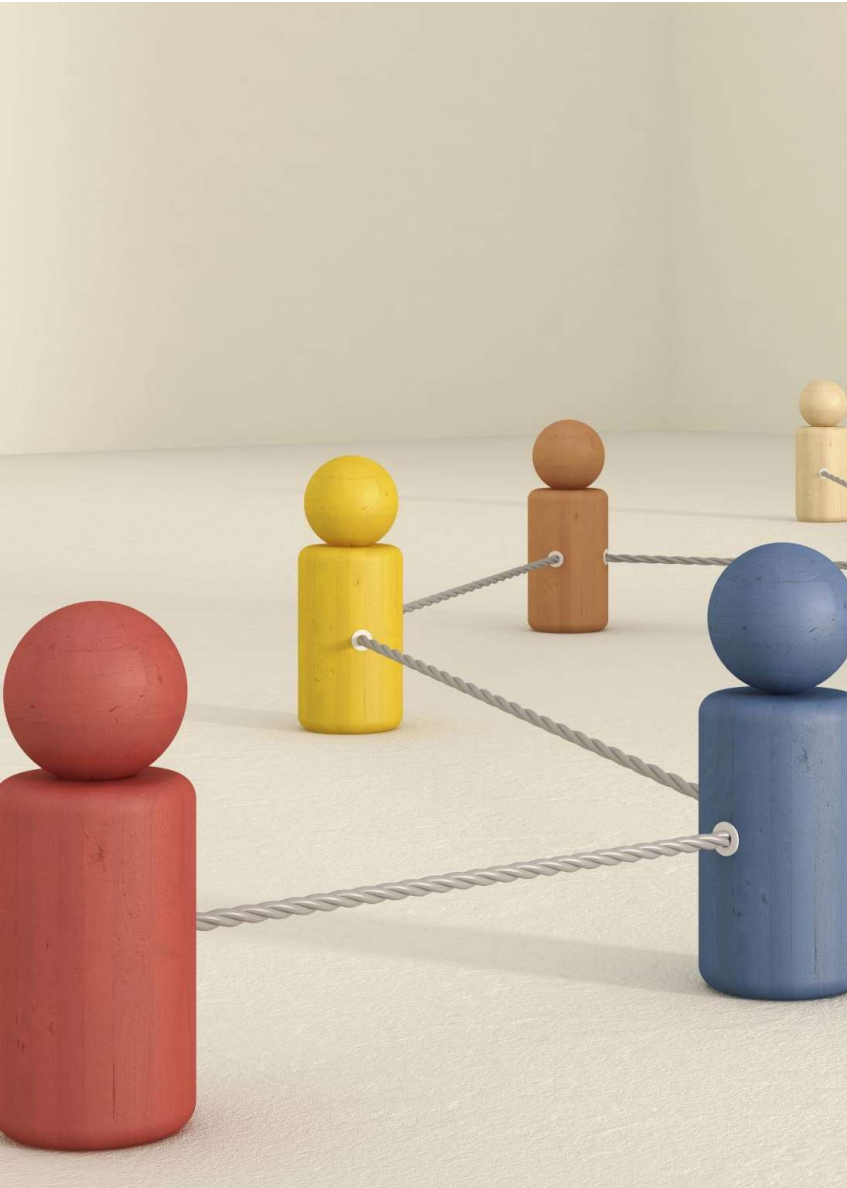
Today's Challenges

Potential of Modern Solutions

IL Customer Base Declines

Challenges reported by team members...

- E-School has had limited updates and has not stayed current with opportunities for utilization of mobile technologies.
- Parent/Student portal provides a less than desired user experience related to viewing information and supporting communication.
- Limited health tracking and management features.
- The district's needs have outpaced the development of the system.



Areas of Greatest Need

- A solution which will...
 - Allow for growth
 - Facilitate enhanced communication with stakeholders
 - Support insights through reporting
 - Provide greater support for historical information
 - Create opportunities for efficiencies

Recommendation

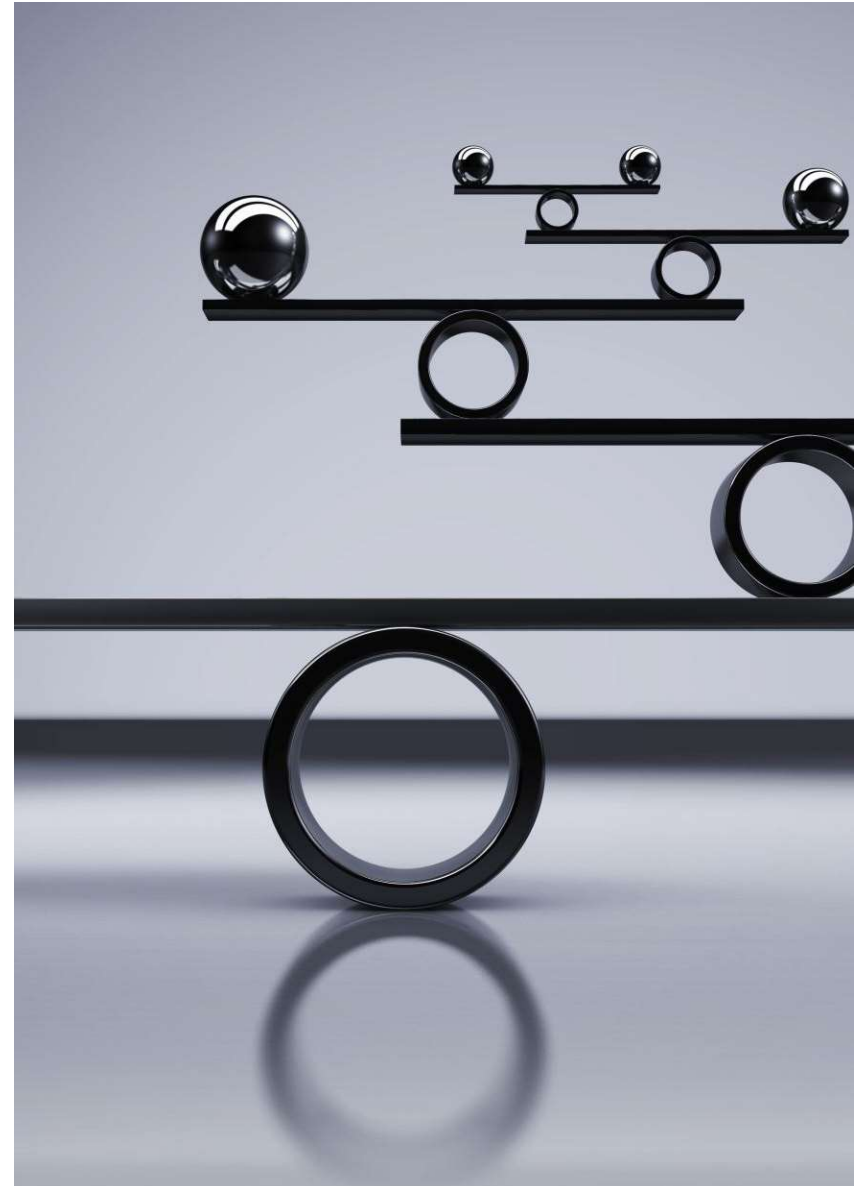
Product Evaluation Summary

- Highest Weighted Criteria: 66.7% (won or tied)
- Functional Items: 72% (won)
- Recommended by Team: 71% recommended

Notable Functional Area Wins:

- Scheduling/Courses, Grade Reporting, Teacher and Family Functions

Recommended Solution: Synergy (from Edupoint)



Synergy SIS – Estimated Costs – 5 Years

- **Year 1 (Onboarding/Implementation Year):** **\$92,185**
 - Onboarding + Migration Costs (non-recurring): \$78,000
 - Est. Billable Expenses for Implementation: \$14,180

- **Years 2 – 5**
 - Software License / Support / Infrastructure: **\$447,640**
 - Software License / Support (Annual): \$56,210
 - Infrastructure (Dedicated) (Annual): \$55,700

- **Total Solution Cost (5 Years):** **\$539,825**

- Approx. Current Solution Cost (5 Yrs): \$315,000*

* Infrastructure costs for the current SIS are not included (capital expense)



Anticipated Benefits of Synergy

- Modern user experience
- Modern capabilities & opportunity for growth
- Customization & adaptability
- Opportunities for efficiency

What team members are saying...

- “Synergy has the potential to become our "one stop shop" for everything we do in a day.”
- “I love the potential opportunity to have students scan into offices with an ID allowing attendance to be more efficient.”
- “For the Counseling & Advising Office I love that it shows on the counselor dashboard what students were seen that day...allowing more seamless technology integration to assist our difficult jobs.”
- “Synergy has the ability for us to customize [the product] for the nurses to use.”

What's Next?

- Questions / Clarification?
- April 14th Meeting – Recommendation to Purchase

