



Rock Ridge Public Schools:



Building 1404



Building 1404 Special Education
Design Development Estimate

14 MAY 2025



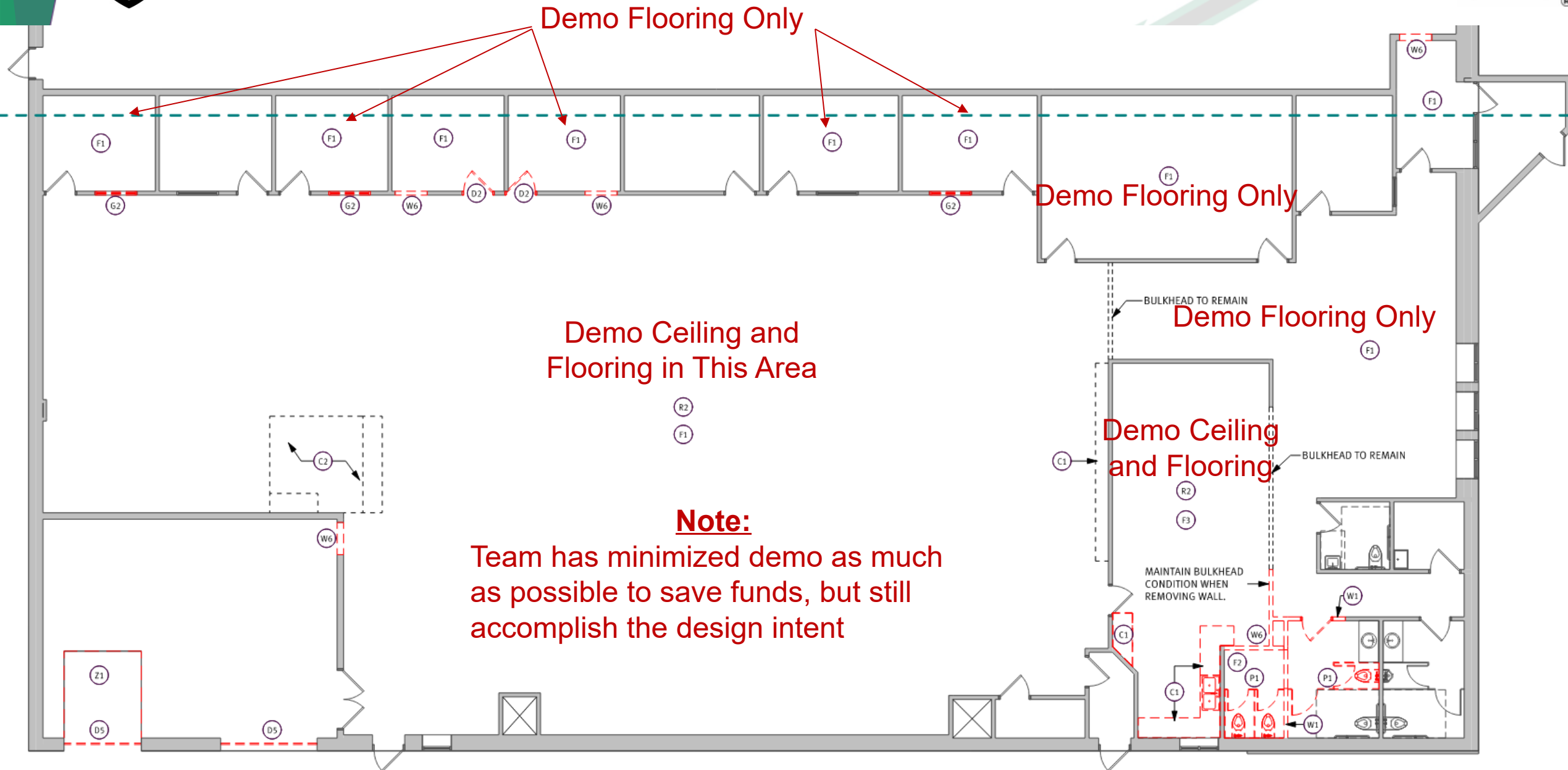
AGENDA



1. **Building 1404 Special Education Remodel**
 - A. Design Update
 - B. DD Estimate Summary
 - C. SD vs DD Estimate Comparison
 - D. Milestone Schedule
 - E. Board Approval to Move into Construction Documents

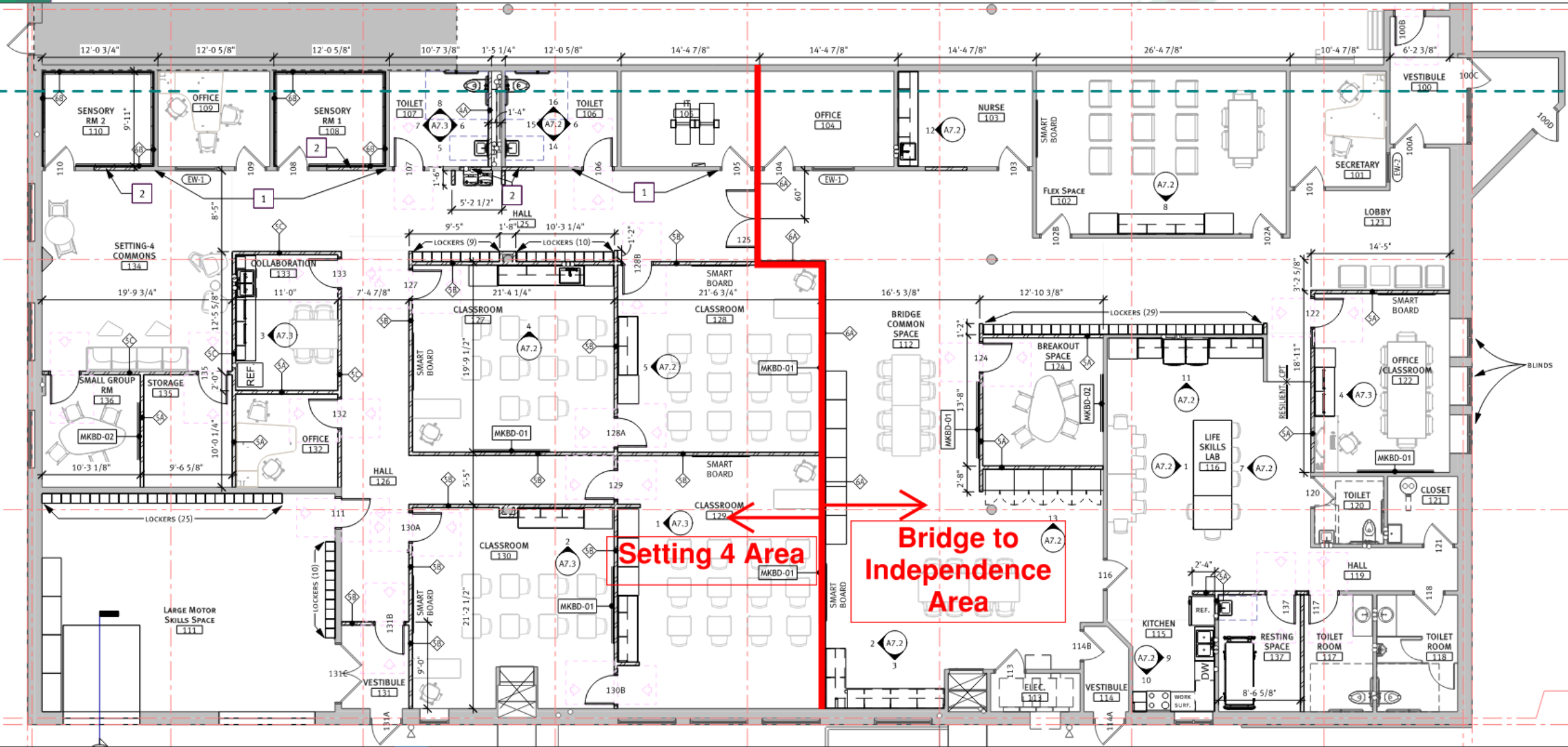


Demo Plan





Floor Plan



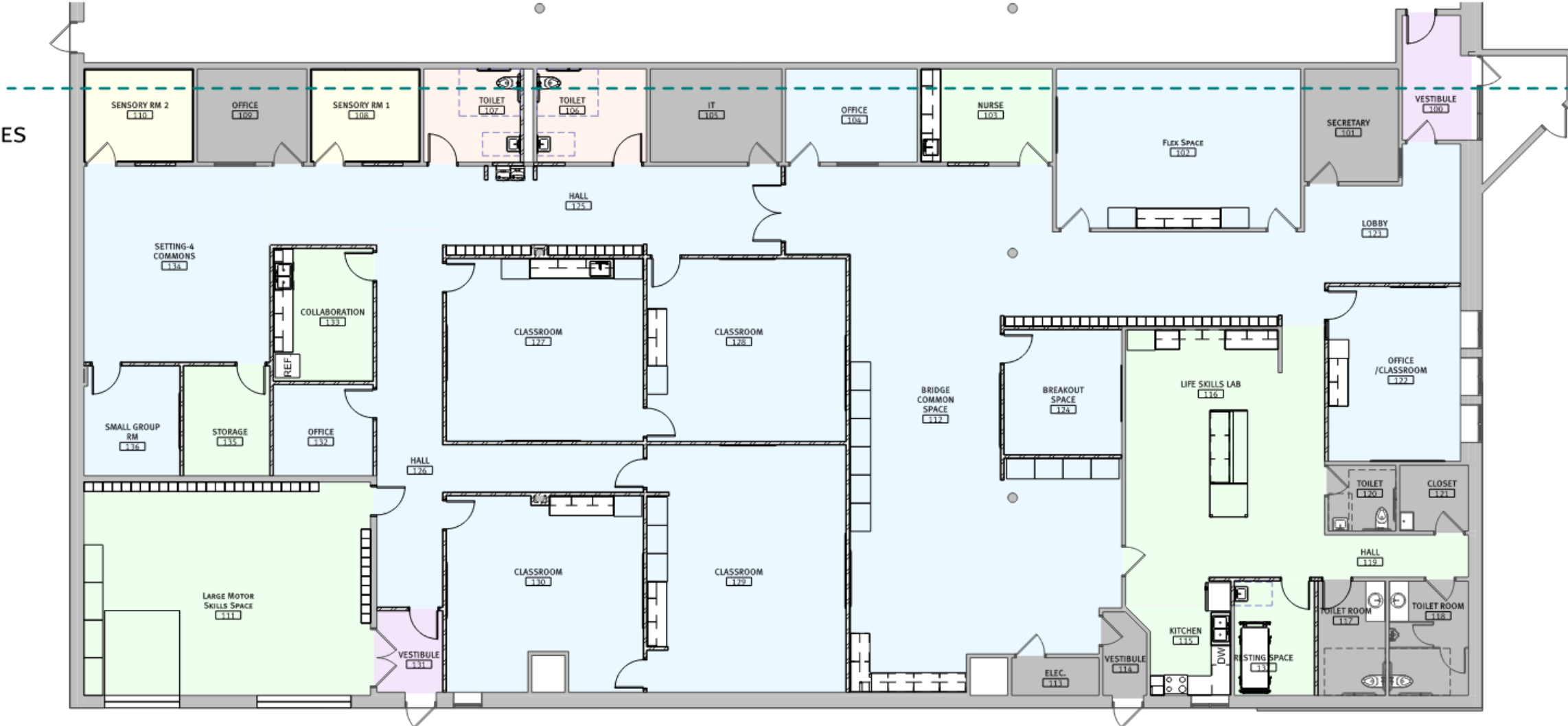


Finishes Plan



FLOOR FINISHES

- CPT-01
- CPT-02
- CPT-03
- CT-01
- EXIST
- RF-01



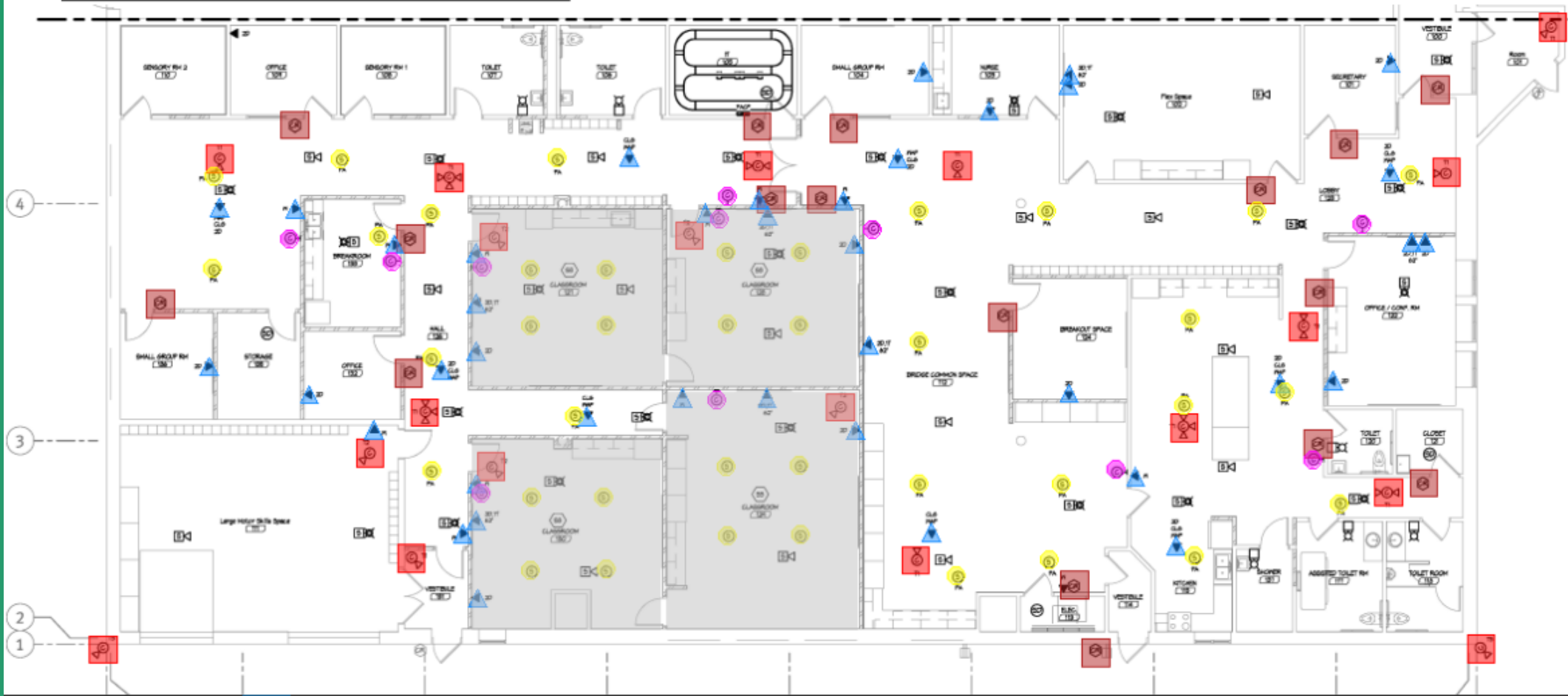


Additional DIV 27/DIV 28 Low Voltage Scope
General Adjustments from S.D. --> D.D.

**KEY**

- 78 - DIV 28 - Cameras - 22 EA
- 147 - DIV 28 - Access Control - 17 EA
- 148 - DIV 27 - Tech Port - 40 EA
- 149 - DIV 27 - Speakers - 39 EA
- 150 - DIV 27 - Clocks - 11 EA

Low Voltage Plan





1404 Design Development Estimate:

\$2,329,839 Total Hard Costs (Actual Construction)

\$ 493,161 Total Soft Costs (Owner/Administrative Associated Costs)

\$2,823,000 Total DD Estimate Cost

\$250,000 **Add Alternate #1: Upgrade/Replace 2 AHU's**

\$ 45,000 **Add Alternate #2: Provide Assistive Listening in (4EA) Classrooms**

Notes:

1. Alternates listed above are NOT included in the current estimate
2. Building purchase and preconstruction Fees accounted for previously and are not included in the Total Soft Costs above
3. Soft Costs: Design, Testing, Commissioning, & Technology (no FFE costs included)



1404 SD vs. DD Estimate Comparison:

\$2,563,300 Total SD Estimate Cost

\$2,823,000 Total DD Estimate Cost

\$ 259,700 Increase from SD to DD

Major Contributing Factors:

1. Low Voltage Details Now Defined
 - a. Security Cameras
 - b. Access Control (Door hardware)
 - c. Data Ports
 - d. Speakers
 - e. Clocks
2. Misc. “fine tuning” of details for a more accurate estimate



Building #1404 - SPED Milestone Schedule:

14 JUL 2025	DD Estimate Present to School Board
29 AUG 2025	CD Drawings Complete
08 - 26 SEP 2025	Bidding (FY '25/'26 01 JUL 2025)
13 OCT 2025	Board Approval of Bids
27 OCT 2025	Construction Start
06 MAR 2026	Construction Complete (FY '25/'26 30 JUN 2026)

(~ 4 Month Construction Duration)

Notes:

1.) District Fiscal Year (FY) 2025/2026: 01 JUL 2025 – 30 JUN 2026



Conclusion & Discussion



Questions?

Board Approval?

***REQUESTING VOTE TO APPROVE MOVING FORWARD
INTO THE CONSTRUCTION DOCUMENT (CD) PHASE FOR
THE SPED PROJECT ONLY***



THANK YOU!

#FIERCELY
UNITED



#ROCKRIDGE
RISING

GO WOLVERINES!