

Supt. Guggisberg podium notes...

7/28/2020

Governor Walz to announce BACK-TO-SCHOOL plans for schools in MN on July 30

What this Ad Hoc Committee meeting is about..

Meeting(s) will give an opportunity to learn more about the details of a safe return to school for students and staff and a chance to ask questions and provide input / ideas.

This is a collaborative effort. Listening, understanding, accepting is important. *Tongue-in-check* say... re-opening school this fall is going to be an impossible task because it will not make everyone happy everyday all the time... again, it will be an impossible task but it's going to be an impossibility shared by everyone across the state.

You are asked to participate within the framework of a safe return to school for students and staff.

You are asked to share your observations [facts] with others in the community... there are no secrets here, we are trying to be transparent and we want our students, staff, parents and community having a clue right out of the gate what is in store for our school in 2020-2021.

But no matter how much feedback is collected or how many plans are made, everything could change in a day. Creating consistency and pivoting quickly will be essential. We have to be nimble.

Larry's podium notes...

What is meeting is NOT about –

This is not a podium for your political point of view..... *Comments within framework of a safe return to school for students and staff.*

What I don't want to see is 3 or 4 of you strong-willed Type AA people to dominate the conversation. 😊

Previous slide → “Listening, understanding, accepting is important”... that does not mean if the school doesn't do what you say or want “*we are not listening.*”

W
E
L
C
O
M
E

GREENBUSH – MIDDLE RIVER

INDEPENDENT SCHOOL DISTRICT 2683
www.middleriver.k12.mn.us



Office

401 Park Avenue West
PO Box 70
Greenbush, MN 56726

Phone: 218-782-2232

Fax: 218-782-3141

ADMINISTRATION

Larry Guggisberg, Ed. D.
Superintendent

Sharon Schultz
Principal / Athletic Director

BOARD OF EDUCATION

Shane Kileo,
Chair

Brandon Kuznia,
Vice-Chair

Carrie Jo Howard
Clerk

Joseph Melby,
Treasurer

Laurie Stromsodt,
Director

Allison Harder
Director

Kurt Stenberg
Director

July 21, 2020

A Message and Invitation from the Greenbush Middle River Superintendent of Schools

Please consider being a part of a representative group of Parents, Teachers, Students and School Staff to participate in an *Ad Hoc* "BACK TO SCHOOL COMMITTEE." The purpose of the committee is to provide information & input to school administration of "what school should look like" for the safe return for students and & staff this fall.

Meeting #1 (of likely 3) on Tuesday, July 28, 2020 @ 7:00 pm in the GMR School Cafeteria (to allow for social distancing). Please enter the building thru the parking lot (gym entrance).

Invited to participate on the Ad Hoc Committee are:

Lisa Bergsnev	Kara Heggedal
Kim Brichachek	Allison Harder
Madeline Waage	Meghan Kvien
Matt Williamson	Brad Dahl
Lyndsey Dvergsten	Todd Bergeron
Kelsey Grinsteiner	Tina Taus
Jess Foss	Lynn Balstad
Kara Nelson	Mariah Christian
Mark Glad	Lauren Stenberg
Kelly Christianson	

I recognize it is difficult to have a number of busy people in the same place at the same time. If you can attend the meeting(s), great! For planning purposes please e-mail me your enthusiasm or regret to attend. <lguggisberg@greenbush.k12.mn>



What Is Coronavirus?

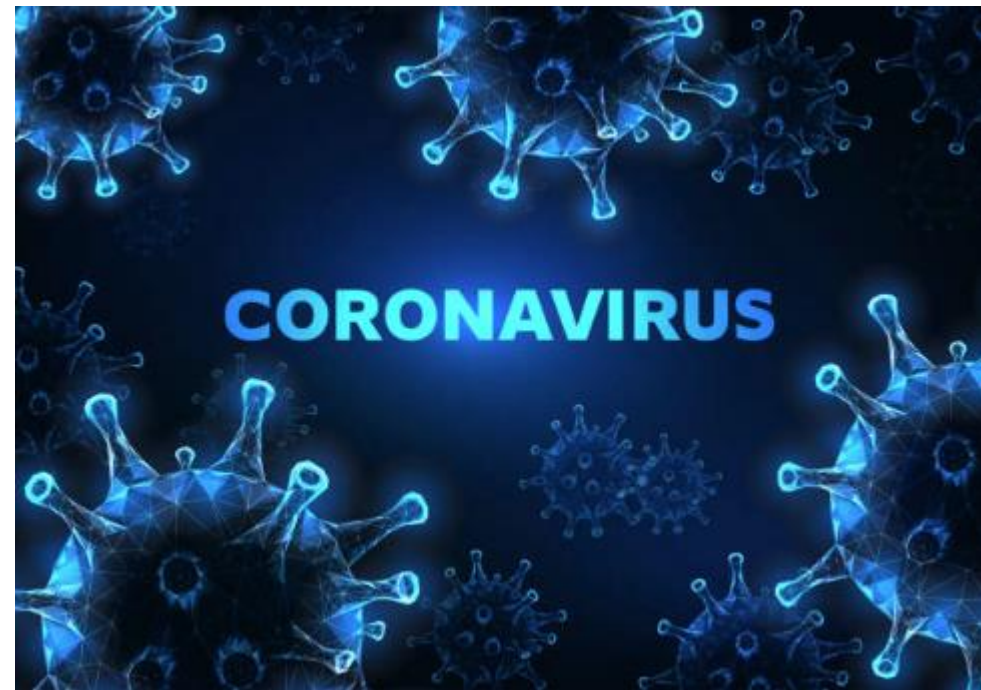
! WHAT YOU NEED TO KNOW

COVID-19

- COVID-19 is the disease caused by the new coronavirus that emerged in China in December 2019.
- COVID-19 symptoms include cough, fever or chills, shortness of breath or difficulty breathing, muscle or body aches, sore throat, new loss of taste or smell, diarrhea, headache, fatigue, nausea or vomiting and congestion or runny nose. COVID-19 can be severe, and some cases have caused death.
- The new coronavirus can be spread from person to person. It is diagnosed with a laboratory test.
- There is no coronavirus vaccine yet. Prevention involves frequent hand-washing, coughing into the bend of your elbow, staying home when you are sick and wearing a cloth face covering if you can't practice physical distancing.

How does the new coronavirus spread?

As of now, researchers know that the new coronavirus is spread through droplets released into the air when an infected person coughs or sneezes. The droplets generally do not travel more than a few feet, and they fall to the ground (or onto surfaces) in a few seconds — this is why physical distancing is effective in preventing the spread.





COVID-19 Dashboard by the Center for Systems Science and Engineering (CSSE) at Johns Hopkins University (JHU)



Total Confirmed

16,534,345

Confirmed Cases by
Country/Region/Sovereignty

4,307,542	US
2,442,375	Brazil
1,480,073	India
822,060	Russia
452,529	South Africa
395,489	Mexico
389,717	Peru
347,923	Chile
301,709	United Kingdom
296,273	Iran
278,782	Spain
275,225	Pakistan
270,831	Saudi Arabia
257,101	Colombia
246,286	Italy

Admin0 Admin1 Admin2

Last Updated at (M/D/YYYY)

7/28/2020, 9:35:19 AM

188

countries/regions

Lancet Inf Dis Article: [Here](#). Mobile Version: [Here](#).

Lead by JHU CSSE. Technical Support: [Esri Living Atlas team](#) and [JHU APL](#). Financial Support: JHU, NSF, Bloomberg Philanthropies and Stavros Niarchos Foundation. Resource support: [Slack](#), [Github](#) and [AWS](#). Click [here](#) to donate to the CSSE dashboard team, and other JHU COVID-19 Research Efforts. [FAQ](#). Read more in



Esri, FAO, NOAA

Cumulative Confirmed Cases

Active Cases

Incidence Rate

Case-Fatality Ratio

Testing Rate

Hospitalization Rate

Global Deaths

655,084

148,295 deaths
US87,618 deaths
Brazil45,844 deaths
United Kingdom44,022 deaths
Mexico35,112 deaths
Italy33,408 deaths
India30,212 deaths
France

◀ Global Deaths ▶

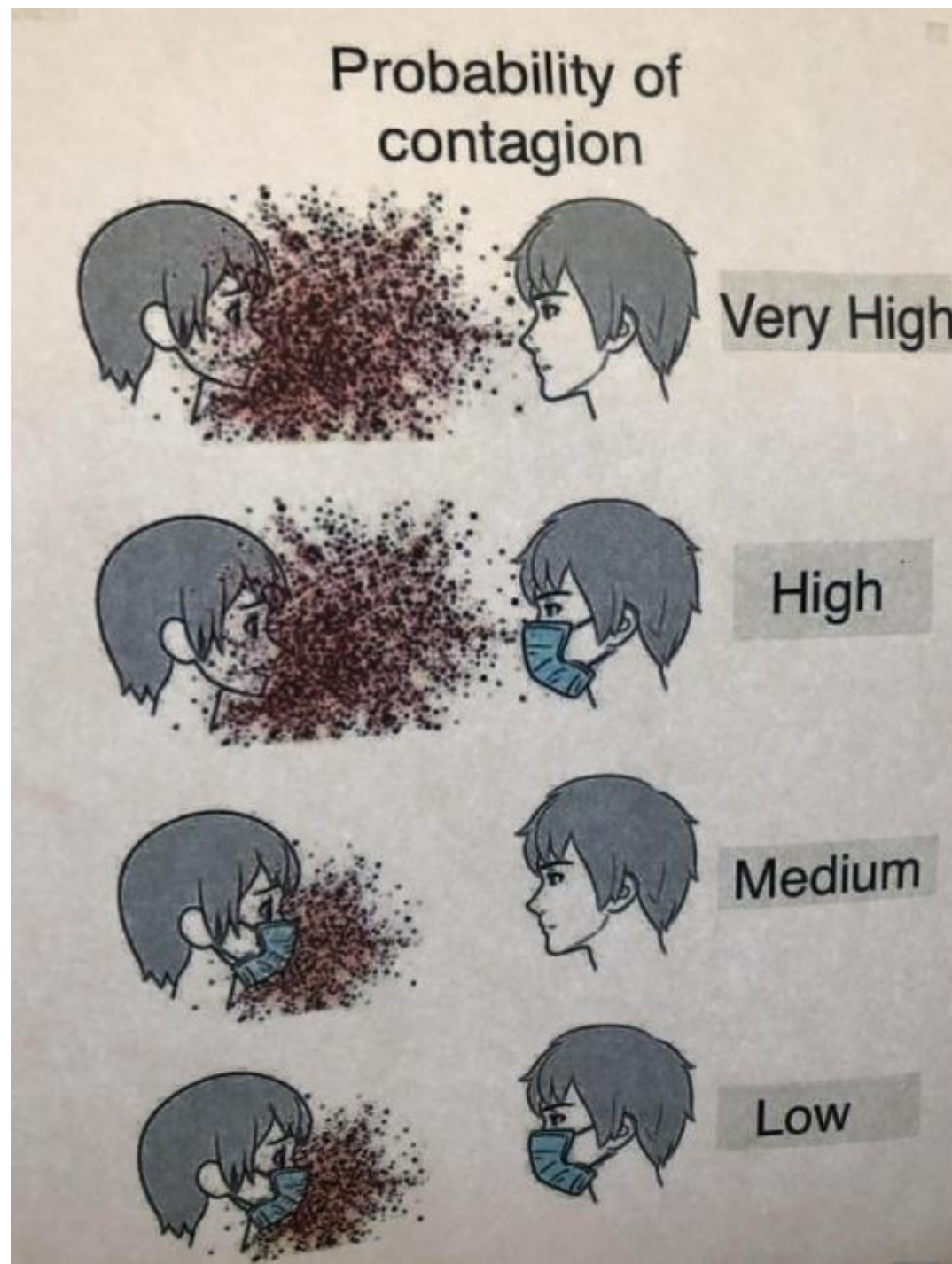
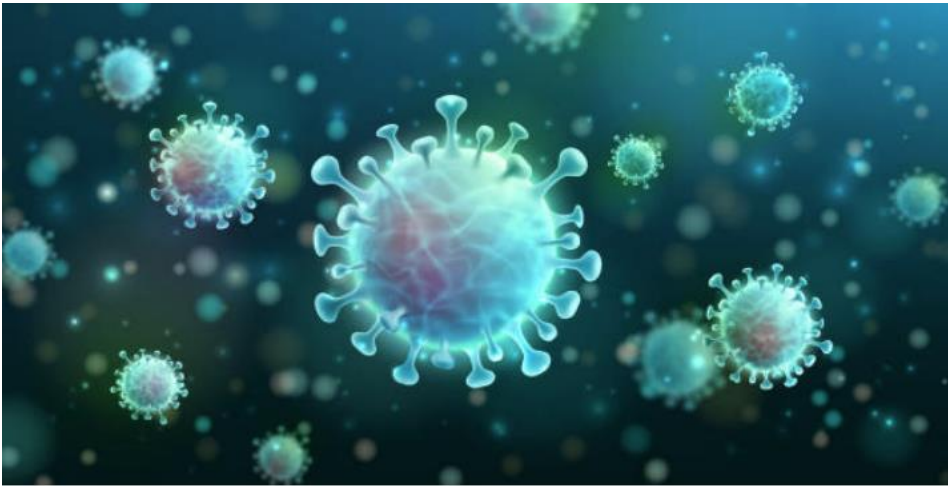
US State Level
Deaths, Recovered32,645 deaths, 72,766
recovered
New York US15,804 deaths, 32,275
recovered
New Jersey US8,547 deaths, recovered
California US8,536 deaths, 96,452
recovered
Massachusetts US7,608 deaths, recovered
Illinois US7,131 deaths, 81,198
recovered

◀ US Deaths, Recovered ▶

Confirmed

Logarithmic

Daily Cases



Gov. Tim Walz orders masks be worn in indoor public spaces across Minnesota



Minnesota is now joining more than two dozen states where the use of face coverings in public spaces is mandatory to curb the spread of COVID-19.

Gov. Tim Walz on Wednesday [\[July 22\]](#) signed an executive order that requires all people to wear face masks or face coverings in indoor places of public accommodation and for workers in outdoor spaces where social distancing may be difficult. The mandate is set to go into effect Saturday. [\[July 25\]](#)

People with a medical condition, mental health condition or disability that makes it difficult for a person to wear a mask or face covering is exempt from the order. Children under 5 years old are also exempt, however if they are between the ages of 2 and 5 they are encouraged to wear masks if able.

Face coverings may be removed when eating or drinking and when taking part in indoor physical exercise such as in a gym where the level of exertion makes wearing a mask difficult among other cases.

The governor's office said while the hope of the executive order is voluntary compliance, a person who violates the mandate could face a petty misdemeanor and face a fine of up to \$100. Businesses that are violating the mandate can be punished by a fine of up to \$1,000.

Add to school supply list

Washable / reusable
face mask and / or gaiter



School Supply Lists

2019-2020

All Students:

-All students K-12 are required to have headphones or earbuds for technology activities.
-For open gym, recess in the gym, phy-ed and sports practice, ALL k-12 students are required to wear tennis shoes that are to be used exclusively indoors to protect the gym floor surface.

Grades K-6:

-PLEASE MARK ALL SUPPLIES WITH STUDENTS NAME!
-Elementary students should not bring "trapper keepers" or similar items because there isn't enough room in the classroom desks.
-Music: have instrument ready to play the first day of school

Kindergarten

- Backpack
- Fiskar Scissors (no point)
- Earbuds
- 4 large glue sticks
- 10 pencils
- Rest Mat
- 1 pkg pencil top erasers
- Plastic pencil box
- 1 wide ruled notebook
- 1 box washable markers
- 1 bottle of glue
- 1 box Ziploc bags (quart. gallon or 2-gallon)

1st Grade

- 3 Box of 8 #2 pencils (NO MECHANICAL PENCILS)
- 2 boxes of crayons
- 2 large erasers
- 16 glue sticks
- Fiskars scissors
- Folders
- Backpack
- small pencil top erasers
- small pencil box
- ear buds
- 4 wide ruled notebooks
- 1 plastic folder w/ pockets
- *Teacher will store supplies but please mark them with name

2nd Grade

- 2in hard cover binder
- 1 small bottle of glue
- Headphones (not earbuds)
- 4 Glue sticks
- 1 box 24 count crayons
- Backpack
- 1 pkg #2 pencils
- 1 large eraser
- Color pencils
- 1 dry erase marker
- 1 Plastic pencil box
- 2 pocket folders
- 2 Wide-ruled notebooks

3rd Grade

- Box of 24 Crayons
- Markers
- 3 boxes of pencils
- 3 Pens
- 1-70pg Wide-ruled notebook
- Glue
- Scissors
- Small Pencil Box
- 1 Washable large glue stick
- 2 pocket folders
- 2 Large erasers

4th Grade

- Pencil Box
- Pencils (replace as needed)
- Small pencil sharpener
- 1 Highlighter
- 4 to 5 Glue sticks
- Glue Bottle
- 1 BIG Scissor
- Box of 24 Crayons
- 1 pad of Post It notes
- Notebooks (replace as needed)
- 2 Colored pens
- Folder

5th Grade

- 3 Composition notebook (not wire bound)
- Earbuds
- 4 sturdy folders (w/ fasteners)
- 2 highlighters (blue & yellow)
- 3 large glue sticks
- 1 black sharpie
- 2-3 black or blue pens
- 1 Adult scissors
- 1 box colored pencils
- 3 2x2" Post Its
- Pencils
- 2 Expo Markers (fine point)
- Pencil Box
- Small pencil sharpener
- Calculator: TEXAS INSTRUMENT TI-30XS
- Roll of masking tape (art class)

6th Grade

- 2-3 Notebooks
- 1-2 Highlighters
- 3-4 Glue Sticks
- 1 adult scissors
- 12 pencils
- Earbuds
- Pencil box
- 2-3 Fine point expo markers
- 2-3 Pens
- 2-3 Folders
- Calculator (for home): Texas Instrument TI-30XS
- Optional: colored pencils, 2x2" Post It notes, Elmers liquid glue, 1 roll masking tape (Art Class)

School Supply Lists

Grades 7-12:

BACKPACKS WILL NOT BE ALLOWED IN CLASSROOMS. PLEASE PLAN ACCORDINGLY

Supplies REQUIRED for all high school students: -Folders -Pens -Memory Stick (flash drive) -Notebooks -Pencils -Headphones/earbuds

Instrumental Music

Have instruments in working order and ready to play the first day of school
-Box of reeds
-Oils
-Cleaning supplies

English

ENGLISH 7-9TH GRADE: 1 pkg 3x5 notecards, highlighters, JUMBO book covers, colored pencils, Headphones/earbuds, and plenty of pencils/pens.
ENGLISH 10/LIT 10: Composition notebook (bound notebook), highlighters.
ENGLISH 11-12TH GRADE: 1 pkg 3x5 notecards, highlighters, 3-subject notebook, colored pencils, headphones/earbuds, and plenty of pencils/pens. SENIORS only: 2 plastic report covers.
AMERICAN LIT: 1 pkg 3x5 notecards, highlighters, composition notebook (bound notebook)
COLLEGE IN THE HIGH SCHOOL ENGLISH: Composition notebook (bound notebook), highlighters, 100 3x5 notecards and note card holder (ex: recipe box), memory stick, laptop or other device to use in class.

Math

MATH 7-9TH GRADE: JUMBO book cover, notebook paper, folder, plenty of pencils, EXTRA CREDIT: for giving me 10 extra: low odor dry erase marks OR red pens OR pencils for students to use. MUST HAVE CALCULATOR: Texas Instrument TI-30XS
ALGEBRA 2, GEOMETRY, STATISTICS, STEM & COLLEGE LEVEL CLASSES: Graphing calculator TI-84 Plus recommended, pencils, erasers, folder/binder, notebook (1 per math class), JUMBO book cover per math class. OPTIONAL: Highlighters, sticky notes.

Art

CRAFTS CLASS: 1 roll of masking tape, one "upcycled" spice can or equivalent, bucket and lid for painting
PAINTING CLASS: Bucket and lid

Science

GENERAL CHEMISTRY: Tablet/notebook, one 1 1/2-2" binder, calculator required.
POST SECONDARY CHEMISTRY: Composition notebook, folder, calculator required.
STEAM 11 & STEAM 12: Composition notebook, folder, calculator required.

Digital Literacy

-Headphones and flash drive are required

FACS

7-9th Grade
Folder, pens/pencils, colored pencils, highlighter, book cover, calculator (not on a phone), notebook.

Elective FACS Classes

-Pens/Pencils, Highlighters, Colored Pencils, Calculator (not on phone), ruler and notebook.



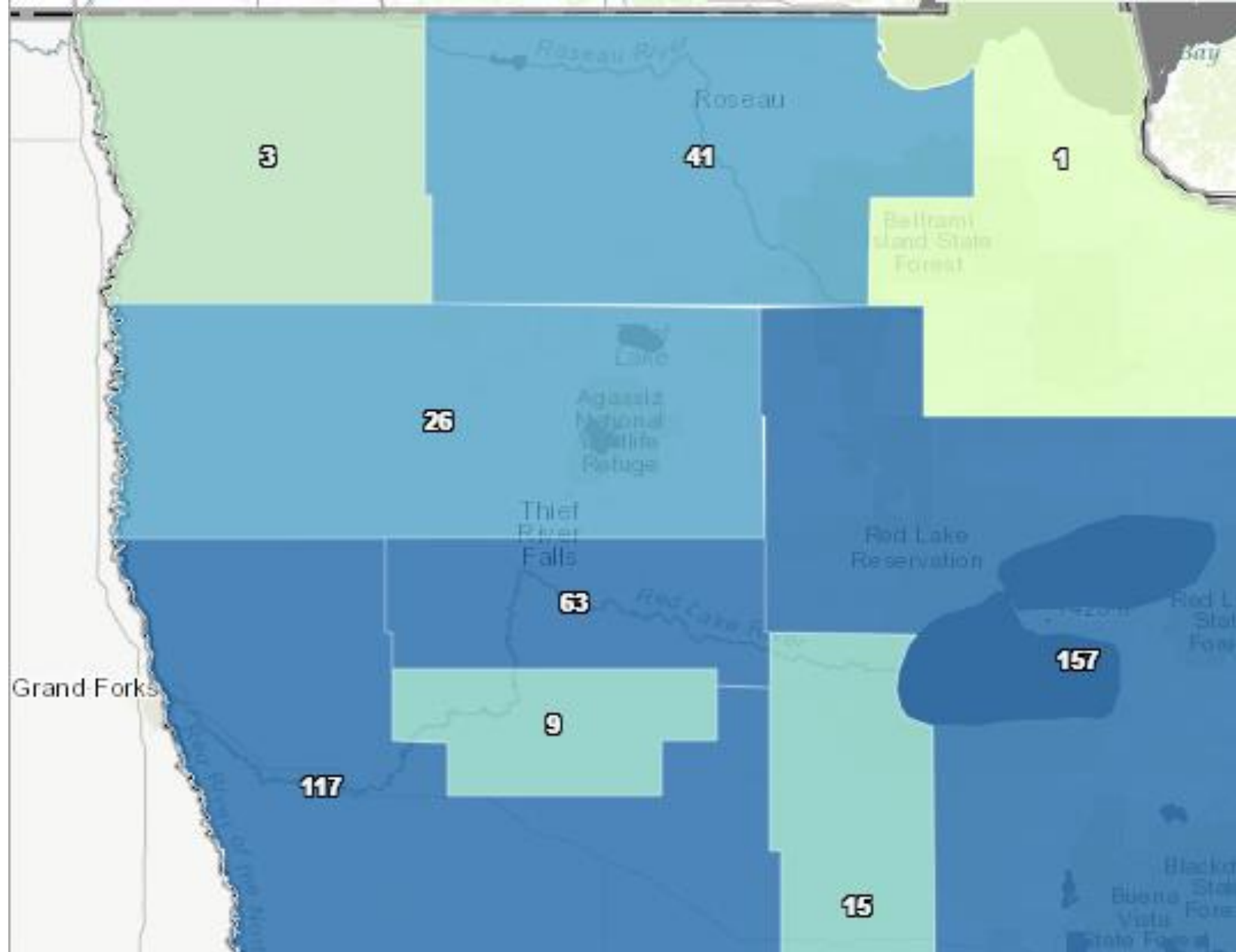
Daily Update:

Because all data is preliminary, the change in number of cumulative positive cases and deaths from one day to the next may not equal the newly reported cases or deaths.

52,281	
Total positive cases (cumulative)	
480	4
Newly reported cases	Newly reported deaths

[Source: MN Department of Health \(as of July 28, 2020 @ 1:15 pm\)](#)

<https://www.health.state.mn.us/diseases/coronavirus/situation.html#case2>



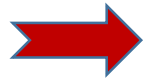
[Source: MN Department of Health \(as of July 28, 2020 @ 1:15 pm\)](#)

<https://www.health.state.mn.us/diseases/coronavirus/situation.html#case2>

Planning for the 2020-21 School Year

As we plan for the 2020-21 school year, we are working with MDH to monitor the COVID-19 pandemic and determine how to keep our students, their families and our staff healthy. While it is too soon to determine how students will return to school this fall, MDE and MDH have developed guidance around three scenarios to help them plan for the 2020-21 school year:

- Scenario 1: In-person learning for all students
- Scenario 2: Hybrid learning with strict social distancing and capacity limits
- Scenario 3: Distance learning only



On July 30, we will join Governor Walz and MDH to share Minnesota's strategy to educate students and keep our school communities safe and healthy during the 2020-21 school year.



[Source: https://education.mn.gov/MDE/dse/health/covid19/](https://education.mn.gov/MDE/dse/health/covid19/)

This school year is going to look and feel different no matter what model we start the year with. We are committed to partnering with our families to make sure everyone has the tools to be safe and successful. No matter how we return, we will continue to grow stronger together this year in the GMR School District.



In-Person Learning

In-Person Learning:

Students return to school buildings five days per week with enhanced health, cleaning, and distancing protocols.



Hybrid Learning

Hybrid Learning:

Students return to school buildings two days per week with enhanced health, cleaning, and distancing protocols at 50% capacity. Students will learn remotely on the other three days.



Distance Learning 2.0

Distance Learning:

Students learn remotely five days per week using district provided technology devices and other age appropriate learning resources.

2020-2021 is just not going to be school as usual. Our students will be coming back differently, with some challenges, some feelings, some experiences. We are going to have to be thoughtful in what we're doing to prepare and support teachers and students.

Governor, Department of Health, Department of Education need to understand managing health risks and making smart, informed choices about when classroom instruction is safe and who would best benefit from it. To succeed, this strategy will take flexibility, adjusted expectations and acknowledgment that reopening is not easy or risk-free. How and when to reopen safely is a dauntingly complex decision.



To-date, schools response to COVID-19 hasn't been easy and will continue as such...progress will be incremental. It will take time to develop habits around new protocols.

2020-2021 Planning Guide for Schools

HEALTH CONSIDERATIONS FOR NAVIGATING COVID-19

Reopening of school is critical during the COVID-19 pandemic, when many children and families are experiencing additional economic hardships, social isolation, and other stressors. Schools are a critical component of communities and have tremendous impact on the health, well-being, growth, and development of students and families. Education is a fundamental determinant of health because it cultivates life skills, knowledge and reasoning, social-emotional awareness and control, and community engagement, which serve people over the course of a lifetime. Schools themselves also function as tools and resources for public health intervention by addressing core needs such as nutrition, access to health and social support services, and engagement and support of families and the community as a whole.

The spring of 2020 brought about unprecedented changes to our society and our education system. As we look forward to the 2020-21 school year in our pre-kindergarten (pre-K) through grade 12 schools, we anticipate that SARS-CoV-2 – the virus that causes COVID-19 – will continue to circulate. Students, teachers, and other school staff will be at risk for transmitting and acquiring infection. It is important that everyone in the school community take steps to reduce transmission, particularly to those at high risk, while balancing the need to maintain a strong education system that effectively supports staff, students, and communities.

We developed this document to provide pre-K through grade 12 (K-12) school leaders guidance around policies, practices, and strategies that districts and schools must implement and recommendations they should consider to optimize education and promote health and safety, while mitigating risk throughout the school year. Use this guidance document in combination with the additional guidance provided by the Minnesota Department of Education, which includes both strategies for implementation of health guidance in schools, as well as other non-health related considerations for the 2020-21 school year. Additional guidance will be published as the COVID-19 response evolves throughout the summer and into the fall.

GUIDANCE FOR MINNESOTA PUBLIC SCHOOLS: 2020-21 SCHOOL YEAR PLANNING

STAY SAFE MN



2020-21 Planning Guidance for Minnesota Public Schools

July 23, 2020



Fall 2020 School Reopening Guidance



Coronavirus Disease 2019 (COVID-19)

Your Health ▾

Community, Work & School ▾

Healthcare Workers & Labs ▾

Health Depts ▾

Cases & Data ▾

More ▾

🏠 Community, Work & School

Health Equity



Community Mitigation
Framework

Cleaning & Disinfecting



Businesses & Workplaces



Worker Safety & Support



Schools & Child Care



Guidance for Schools & Child Care

Supplemental Guidance for Child
Care

COMMUNITY, WORK & SCHOOL

Preparing K-12 School Administrators for a Safe Return to School in Fall 2020

Updated July 23, 2020

Languages ▾

Print



Schools are an important part of the infrastructure of communities and play a critical role in supporting the whole child, not just their academic achievement.

This guidance is intended to aid school administrators as they consider how to protect the health, safety, and wellbeing of students, teachers, other school staff, their families, and communities and prepare for educating students this fall.

This guidance is for K-12 school administrators who are preparing for students, teachers, and staff to return to school in fall 2020. School administrators are individuals who oversee the daily operations of K-12 schools, and may include school district superintendents, school principals, and assistant principals.

On This Page

Critical Role of Schools

What is known about the signs and symptoms, burden, and transmission of SARS-CoV-2 among children?

What is known about how schools have reopened and the impact on SARS-CoV-2 transmission?

BACK-TO-SCHOOL... Greenbush Middle River studying re-opening plan with creation of Ad Hoc Committee

Committee consists of parents, administrators, teachers, a para professional representative, pre-school high school and students.

Its goal is to find solutions to keep students and staff safe, given the coronavirus pandemic.

The district hopes that by mid-August there will be a plan in place, depending on decisions by the governor, and requirements from the state departments of education and health.

School districts are currently working under the guidance that three plans are possible: (1) in-person learning, (2) distance learning; or (3) a hybrid of both.

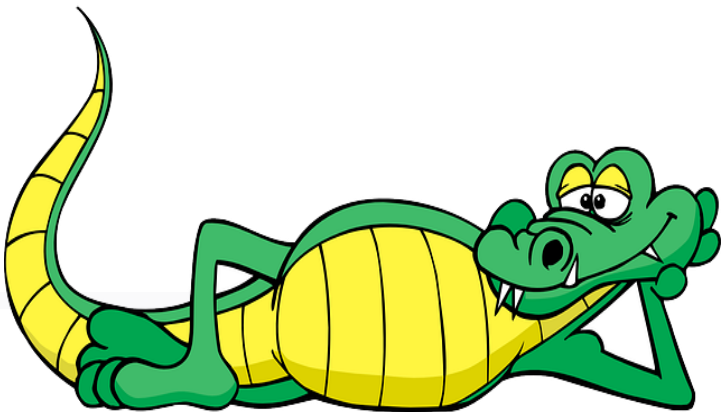
July 28... Meeting #1... Basic Introduction and “what has the GMR School done so far?” GMR Parent Survey [July 13-28, 2020] results.

Week of Aug. 3... Meeting #2 ... (post Governor Walz back-to-school announcement) convey information & seek input towards solutions to keep students and staff safe, given the coronavirus pandemic.

Invited presenters [topic] at Meeting #2: Josh Kern – [sanitation & cleaning], Jeremy Sovde – [transportation], Brittany Burkel – [COVID-19 health awareness items].

Week of Aug. 10... Meeting #3 (post Governor Walz back-to-school announcement) convey information & seek input towards solutions to keep students and staff safe, given the coronavirus pandemic.

Recognizing that in-person learning would mean offering a dual delivery model. MDE has specifically stated that even if schools do reopen to in-person learning this fall, families will be able to opt out of that model in favor of distance-only education. Teachers to figure out how are we going to teach kids that are in front of us and kids that are distanced at the same time.



GMR TEACHERS

• Anderson, Mary

• Aune, Deb

B

• Bergeron, Todd

• Blazek, David

• Burkel, Brittany

C

• Christian, Kent

D

• Dahl, Brad

• Dahl, Laura

• Dahl, Stacy

• Dvergsten, Karen

• Gust, Mara

H

• Hasson, JoLeah

• Howell, Kristi

K

• Kern,Tara

• Koebernick, Debra

L

• Lee, John

• Lieberg, Susan

R

• Rhen, Carol

• Schenkey, Pam

• Stanelle, David

• Stanelle, Deb

• Strand, Laura

T

• Taus,Tina

W

• Waage, Robin

• Waage,Trish

• Wilson, Kaitlynn

... find solutions to keep students and staff safe, given the coronavirus pandemic.

National teacher union supports strikes over reopening plans



One of the nation's largest teachers unions is authorizing its members to strike if their schools plan to reopen without proper safety measures in the middle of the global pandemic.

The American Federation of Teachers, which represents 1.7 million school employees, issued a resolution on Tuesday saying it will support any local chapter that decides to strike over reopening plans.

Source: Associated Press by: Collin Binkley
July 28, 2020

Twin Cities teachers unions demand schools stay closed this fall



The St. Paul and Minneapolis teachers unions on Friday, July 24, 2020, organized a march from J.J. Hill Montessori Magnet School to the governor's residence in support of a return to distance learning this autumn.

By [EMMA HARVILLE](#) | eharville@pioneerpress.com | Pioneer Press

PUBLISHED: July 24, 2020 at 6:42 p.m. | UPDATED: July 24, 2020 at 10:21 p.m.

Minnesota teachers give nod to distance learning, survey shows

A full return has the backing of just one in five educators, according to Education Minnesota, the state's teachers union.

By Anthony Lonetree Star Tribune | JULY 23, 2020 — 11:13PM

A statewide survey of more than 20,000 Minnesota educators found nearly half preferring to stay with distance learning this fall, but almost the same number backing a physical return with appropriate safety measures.

Still, support for a full five-day-a-week reopening proved a tough sell for respondents, according to Education Minnesota, the state's teachers union, which released the survey results Thursday.

The release came a week before Gov. Tim Walz is expected to weigh in with state guidance Thursday on schooling in the fall. Signs point to flexibility being offered to local districts. "[Learning] won't look the same everywhere," Walz said.

Districts had been directed by the state to prepare for three scenarios — distance learning, in-person instruction and a hybrid model — as the pandemic that upended school routines this spring persists.

Most teachers prefer distance learning

The majority of teachers who responded to a survey gauging their preferences on how best to return to schooling this fall favored distance learning.

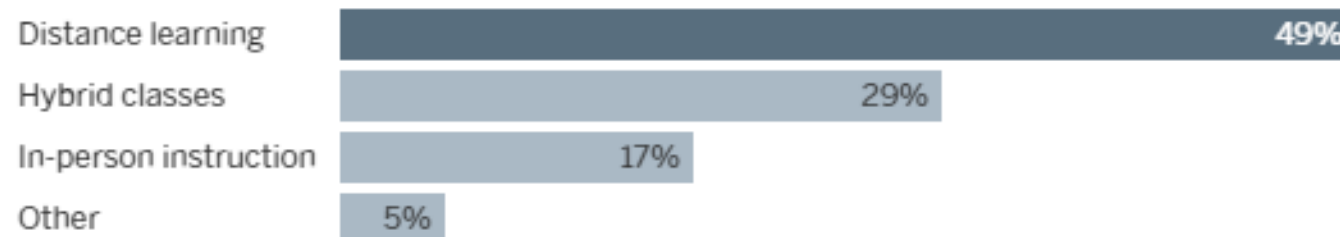


Chart: Jim Foster, Star Tribune • Source: Education Minnesota

...“I think it means we should continue with distance learning because there are so many unknowns,” she said. Forty-six percent of survey respondents supported a physical return to classrooms, but less than 1 in 5 said it should be full time.

That puts educators somewhat at odds with parents who responded to an informal online survey conducted from June 15-July 6 by the Minnesota Department of Education (MDE). *[and by GMR School July 13-18]*

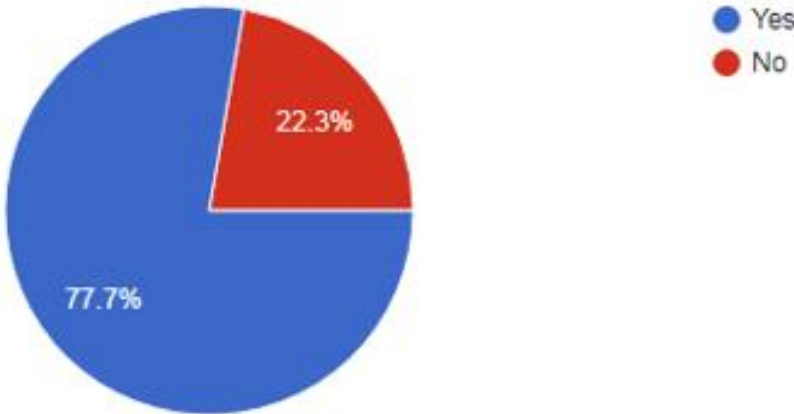
The MDE survey reported that 64% of parents were comfortable with sending their children back to school this fall — and that more than 94% said the return should be full time.

The Education Minnesota survey was open from July 16-20 and drew responses from about one-quarter *[~20,000]* of union members. *By Anthony Lonetree Star Tribune | JULY 23, 2020 — 11:13PM*

Would you be comfortable physically sending your children to school at GMR in a traditional school setting?
175 responses

Greenbush Middle River School District
survey: July 13 – July 18, 2020

175 responses out of 322 = 54% response rate



Grade Level of Students	Greenbush Middle River Elementary School
K	
1	21
2	18
3	14
4	13
5	17
6	20
	Greenbush Middle River High School
7	16
8	21
9	11
10	22
11	21
12	30

ESTIMATED K-12 enrollment
in GMR School District



How can we communicate with parents what we are doing as a reaction to Governor's directives?

Eg: Masking

Eg: Coming to school *feeling well?* ...

Temperature checks prior to being on bus

Temperature checks in specific doors

Eg: Guidance from MDH on how to handle confirmed or suspected cases of COVID-19, with information from MDH currently limited to asking that districts appoint a contact person for reporting, impose a daily regimen of pre-screening for symptoms and designate sick rooms for students and staff who show any signs of illness during the school day.

Eg: Transportation – half capacity

- seating arrangement distancing

Eg: Sanitation & cleaning

- everyone will be cleaning

Eg: Food Service – school meals

Eg: No visitors

Eg: We need Substitutes (teachers & paras)

Eg: Recognizing that in-person learning would mean offering a dual delivery model. MDE has specifically stated that even if schools do reopen to in-person learning this fall, families will be able to opt out of that model in favor of distance-only education. Teachers to figure out how are we going to teach kids that are in front of us and kids that are distanced at the same time

Eg: May be a priority for more classroom days to those students who might benefit more from in-person instruction, including those in special education, which follows a recommendation by the Minnesota Department of Education (MDE).

Guidance around getting tested in the event a teacher or student displays symptoms, or in the timeline for return to school after being symptomatic, is also anticipated July 30. Test results are generally not available for two to seven days; current recommendation from MDH is to quarantine for 10 days from onset of symptoms. School officials are as yet undecided on whether entire classrooms would be asked to remain at home if a student or teacher in that class does test positive for COVID-19.

Additional costs associated with re-opening within COVID-19 pandemic

- Personal Protective Equipment (PPE) [demo & First]
 - Cleaning and sanitation supplies
 - Technology Access
 - Over-time eg: Paras
- [limited] Funding Source: FEDERAL CARES ACT funding

🔗 [GOP Stimulus Package: Schools Will Have To Reopen To Receive \\$45 Billion In Aid July 28, Forbes](#)
About \$45 billion—over half the amount allocated for elementary and secondary schools—would hinge open those institutions being able to reopen their doors for in-person instruction. [Read AASA's analysis on the HEALS Act here. forbes.com](#)

Ad Hoc Committee Meeting #2 the week of August 3 → post Governor Walz announcement

Health Screening Questions

If a player answers Yes to any of the screening questions or has a measured temperature above 100.4 F, she should be advised to go home, stay away from others, and contact her health care provider.

Have you had any of the following symptoms since the last time you were here that you cannot attribute to another health condition?

Do you have a fever (100.4 F or higher) or feel feverish?

Yes No

Do you have the chills?

Yes No

Do you have a new cough or new sore throat?

Yes No

Do you have shortness of breath or difficulty breathing?

Yes No

Do you have new muscle aches? Fatigue?

Yes No

Do you have a new headache?

Yes No

Do you have a new loss of smell or taste?

Yes No

Have you been around someone recently diagnosed with

Yes No

Covid-19?



Low Risk

Medium Risk

High Risk

Potential Coronavirus Vaccines Enter Final Phase Of Testing

By Bill Galluccio
July 28, 2020



104



Scientists have moved one step closer to developing an effective coronavirus vaccine. Moderna and Pfizer both announced their potential vaccines have entered the final phase of testing.

Moderna, which partnered with the National Institute of Allergy and Infectious Diseases and the National Institute of Health, is **recruiting 30,000 people in the United States for their trial**. Half of the volunteers will receive the vaccine, while the other half will be given a placebo. They hope to have preliminary results by late fall or early winter.

Ad Hoc Committee Meeting #2 @ 7:00 pm in the school cafeteria (for social distancing) the week of August 3 → post Governor Walz announcement

August 2020

Sunday	Monday	Tuesday	Wednesday	Thursday	Friday	Saturday
						1
2	3	4	5 	6	7	8
9	10	11	12	13	14	15
16	17	18	19	20	21	22
23	24	25	26	27	28	29
30	31					