



MS #7

Denton Independent School District

Previous Action

- **Tuesday, August 23, 2011 Meeting**
2Q11 Growth Report & Denton ISD Growth Profile
10 year forecast for secondary campuses
- **Tuesday, September 13, 2011 Meeting**
Review of Existing Debt Portfolio and Bond Capacity – 2007 Bond
Scenario #1: Bond Sale – I&S Tax Rate maintains at 49.0 Cents

2007 Bond Authorization

Series 2008	\$165,255,000
Remaining Projects	\$108,893,918
2004 Contingency Funding	\$ 6,793,552
2007 Interest Earnings	\$ 400,517
2007 Contingency	<u>\$ 657,013</u>
Total	\$282,000,000

2007 Remaining Projects

Middle School #7		\$ 41,890,364
Ginnings Elementary	\$ 3,262,000	
Houston Elementary	\$ 3,236,000	
Evers Elementary	<u>\$ 1,785,983</u>	
		\$ 8,283,983
Land – (Currently Available - \$5,761,746)		\$ 21,864,513
Elementary #22		\$ 21,494,798
High School		\$ 1,400,000
Support Services Bldg		<u>\$ 13,960,260</u>
Total		\$108,893,918

Proposed Projects

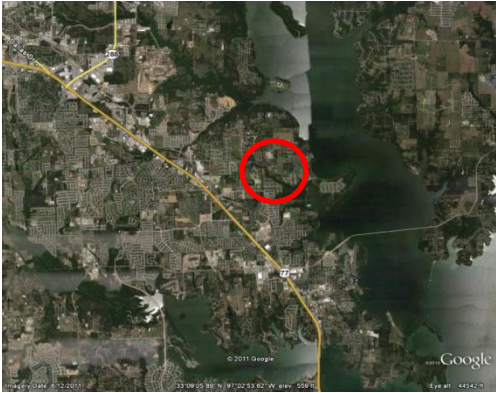
Middle School #7		\$ 41,890,364
Ginnings Elementary	\$ 3,262,000	
Houston Elementary	\$ 3,236,000	
Evers Elementary	<u>\$ 1,785,983</u>	
		\$ 8,283,983
Technology:		
TxDot – 2181	\$ 250,000	
TxDot – 2499	\$ 250,000	
City of Denton – Mayhill	\$ 195,000	
New Project – Lake Lewisville	<u>\$ 325,000</u>	
		<u>\$ 1,020,000</u>
Total		\$51,194,347

Available Funds

	1999	2002	2004	2007	Total
Interest	11,493	263,612	2,428,304	2,641,222	5,344,631
Contingency :					
Closed Projects	112,058		982,441	7,491,715	8,586,214
Technology		549,139	696,125		1,245,264
Total	123,551	812,751	4,106,870	10,132,937	15,176,109

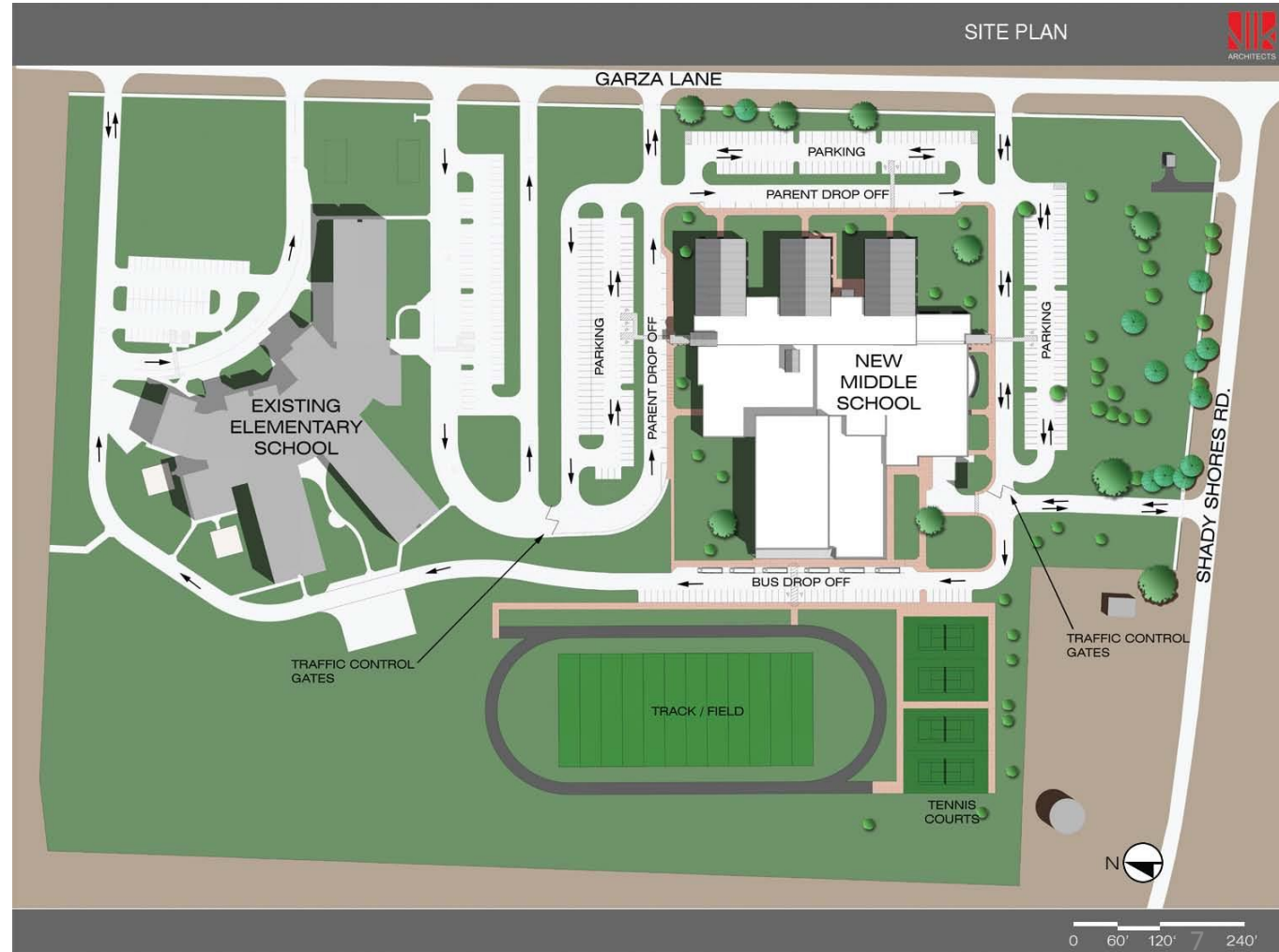
Proposed Projects	\$ 51,194,347
Less Available Funds	<u>(\$ 15,176,109)</u>
 Additional Funds Needed	 \$ 36,018,238

Site



OVERVIEW

- Part of the 2007 Bond Referendum
- Board has indicated the location at the Shady Shores site
- Opening Date is dictated by enrollment and District Bonding Capacities



1st Floor

OVERVIEW

- Planning is currently on hold – Design Development
- Clinic Revisions
- Relocation of Art Rooms
- Special Education Addition
- Bringing science lab/ classrooms up to new TEA standards
- Explore upgrading storefront & glazing and daylight controls in the classrooms
- Modification to counselor offices
- Improvements to CTE Areas
- Explore integration of technology upgrades



2nd Floor

OVERVIEW

- Limited Changes to the 2nd Level Plan
- Geo-Thermal HVAC system
- East-West Orientation
- Native landscaping



10 Yr. Forecast

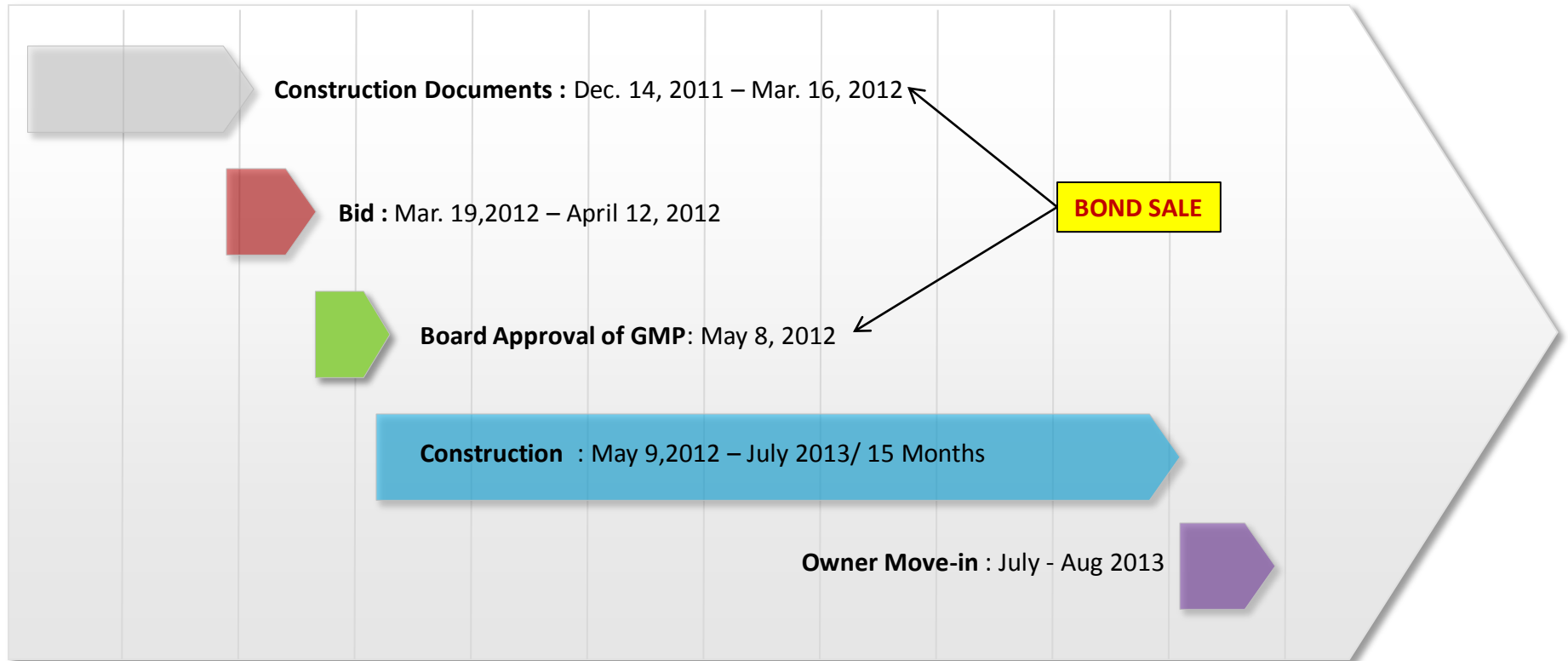
MIDDLE SCHOOL CAMPUS ENROLLMENT PROJECTIONS											
DENTON ISD	Current	Projections									
Campus Name	2011/12	2012/13	2013/14	2014/15	2015/16	2016/17	2017/18	2018/19	2019/20	2020/21	2021/22
Calhoun Middle School	851	868	860	881	913	962	1,010	1,089	1,128	1,156	1,181
McMath Middle School	823	841	878	913	934	959	993	1,061	1,128	1,188	1,211
Navo Middle School	829	896	978	1,021	1,174	1,254	1,368	1,417	1,534	1,639	1,773
Crownover Middle School	978	1,090	1,179	1,230	1,214	1,185	1,211	1,229	1,286	1,289	1,297
Strickland Middle School	885	905	974	1,023	988	1,027	1,038	1,119	1,118	1,139	1,154
Harpool Middle School	956	1,008	1,096	1,172	1,277	1,301	1,296	1,300	1,360	1,432	1,507

- Option #1 : Construction of MS #7

- a) 2013/14 Opening
- b) 2014/15 Opening

- Option #2 : Portables

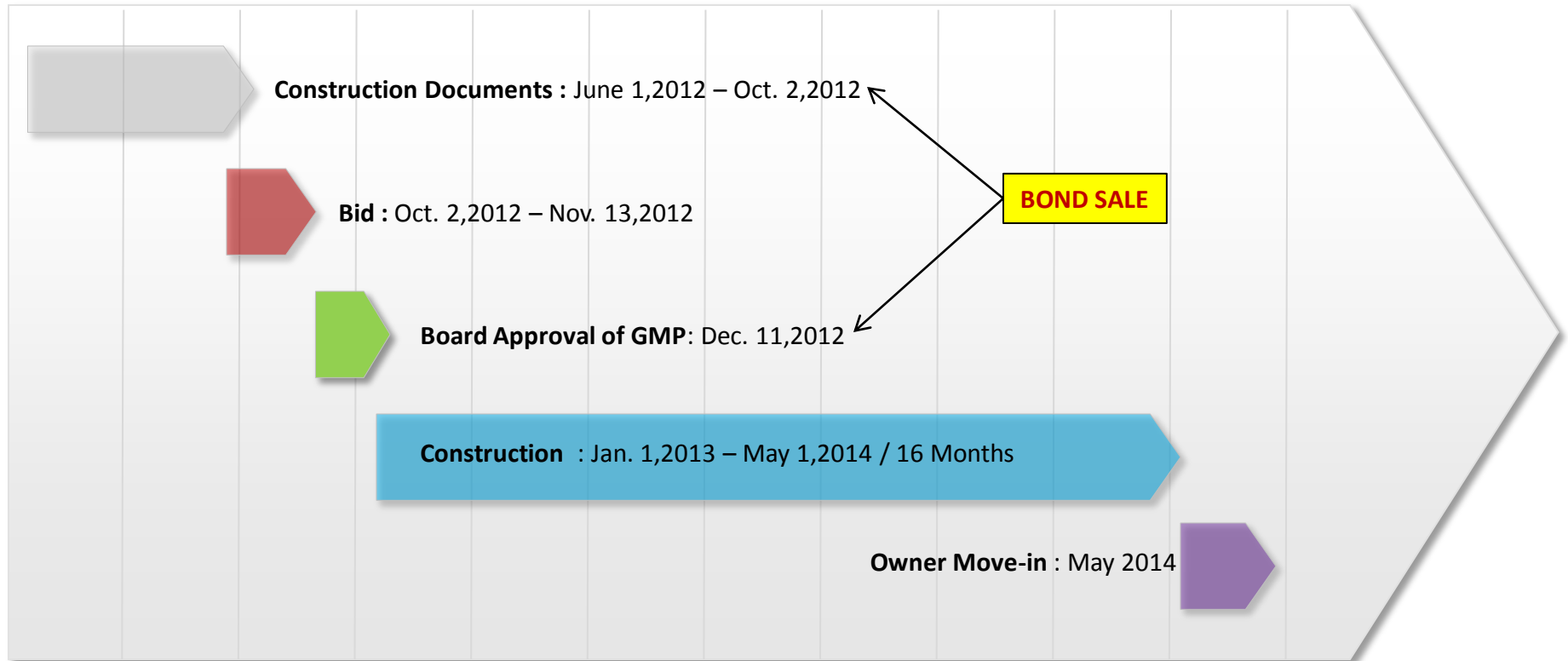
Option #1a – 2013/14 Opening



NOTES:

- Fast track schedule for design completion and construction
- Could gain time if GMP / Bidding could be expedited or call a special Board meeting
- Take advantage of current construction market

Option #1b – 2014/15 Opening



NOTES:

- Standard schedule for design completion & construction

Option #2 – Portables

Name of School	# of Students over Capacity 2012/13 School Year – Total # of Portables Needed	# of Students over Capacity 2013/14 School Year - Total # of Portables Needed	# of Students over Capacity 2014/15 School Year - Total # of Portables Needed
Calhoun Middle School	0 0	0 0	0 0
McMath Middle School	0 0	0 0	0 0
Navo Middle School	0 0	0 0	21 1 / \$18,000.00
Crownover Middle School	90 4 / \$72,000.00	+89 (179) +4 / \$72,000.00 more	+51 (230) +2 / \$36,000.00 more
Strickland Middle School	0 0	0 0	23 1 / \$18,000.00
Harpool Middle School	8 0	+88 (96) +4 / \$72,000.00 more	+76 (172) +3 / \$54,000.00 more
Total Cost	\$72,000.00 2012/13	\$144,000.00 more 2013/14	\$126,000.00 more 2014/15

- **Cost to Relocate an Existing Portable w/ addition of power, data & ADA ramps:**
 \$8,000 for single - \$10,000 for double
Excludes cost to repair any structural or cosmetic issues
- **Cost to Furnish a Portable: Computers, Projector & Screen, Student & Teacher Desks, etc.:**
 \$10,000 for single - \$20,000 for double

Next Steps?

- ❑ Move forward on construction of Middle School #7 or Portables

If Construction what opening date? 2013/14 or 2014/15

- ❑ Use of Reserve Funds & Contingency monies for the completion of the remaining science lab & classroom additions. (Evers, Ginnings, & Sam Houston Elementary)

- ❑ Consideration of Reimbursable Agreement with our architectural consultants to complete construction documents and delay the sell of bonds for construction until a more opportune time.

- ❑ Consider approval of funds for fiber remediation projects.

(TxDOT – 2181, 2499, Hwy380 / City of Denton – Mayhill Road / New Service Project: ILA w/ Denton County & UTRWD – Across Lake Lewisville from Stephens ES to Cross Oaks ES)

- ❑ Remaining Projects in the 2007 Bond Referendum to Consider:

Elementary #22

Support Services Building

Land Acquisition

Planning & Design for Comprehensive High School #4

