

# From the principal's desk



September 13, 2022 The month "When Leaves turn Color" iitōwāpiipittsskō

## Dates to Remember!

Sept. 7-8: Aimsweb testing  
Sept. 20: BES picture day  
Sept. 23: Native American Heritage Day  
Sept. 28: Mary Buck at BES  
Sept. 30: Cultural day

## 2022-23 School Focus

We look forward to the new school as we all return back to another school year.. This summer the SLT and SBE members have worked hard to plan out the school year. The team members planned out professional development, curriculum maps and identified professional development for the school focuses. These 4 focus areas at BES continue to be:

1. Science of Reading
2. Science of Writing/Handwriting
3. Math plan following Mary Buck's guidance
4. Social Emotional Learning with Conscious Discipline & DESSA

## Attendance - August:

2nd grade: 148 students,  
66.46%

3rd grade: 145 students,  
69.80%

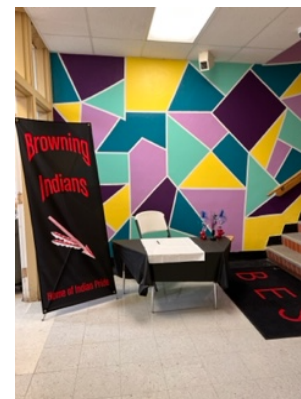
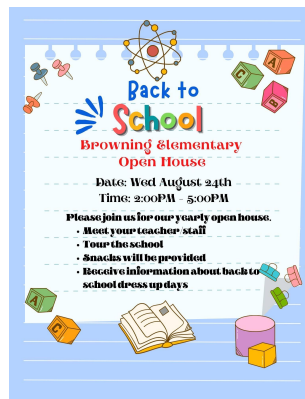
Schoolwide: 293 students,  
68.11%

## Back to school open house

On August 24th, we had our open house where families got to meet their child's teacher, visit the school, and participate in signing day. Each child at BES was given a backpack with school supplies and a water bottle. We started the year off with spirit days where students dressed up according to the theme for that day.

## Beginning of the year:

For the first couple of weeks of school, the staff have been focused on building relationships with students and families. In addition, teaching routines and procedures for classroom expectations,



hallway expectations,  
playground expectations,  
lunchroom expectations,  
and dismissal.

### Welcome back BES staff

BES staff is excited for the 2022-23 school year. The team engaged in team building activities during PIR days.

