

Raider

Academy

for

Intervention

Support

and

Education



“Every Student Matters”

Why?

We can do better – with graduating classes hovering around one hundred students, each student not graduating represents a significant percentage.

- 2010 Four Year Graduation Rate – 73.4%
 - 2010 Non Special Education – 72.1%
- 2011 Four Year Graduation Rate – 71.2%
 - 2011 Non Special Education- 71.6%
- 2012 Four Year Graduation Rate – 75.5%
 - 2012 Non Special Education – 78.9%
- 2013 Four Year Graduation Rate – 64.8%
 - 2013 Non Special Education- 70.0%
- 2014 Four Year Graduation Rate – 81.4%
 - 2014 Non Special Education – 85.1%

Information from CT State Department of Education

<http://www.sde.ct.gov/sde/cwp/view.asp?a=2758&q=334898>

“Every Student Matters”

Why?

We are paying tuition rates for students that we are capable of accommodating by designing the program built with supports and interventions.

- 2015-2016 Estimated expenditure for students age 12 through 21 in outplacements, just tuition and transportation

\$925,279.00

- 2014-2015 Estimated expenditure for students age 12 through 21 in outplacements, just tuition and transportation

\$858,222.00

Some placements would not be able to come back based upon requirements and suitability of the program available

“Every Student Matters”

What Can We Do?

We can deliver support services to some of our students who are currently being placed out of district because of a lack of appropriate learning setting

We can provide a small learning environment, centered around mastery based learning

Students would have a separate school housed within Derby High School, staffed by teachers dedicated to the program

We can engage students in learning and credit recovery that is suited to their individual learning style and pace

“Every Student Matters”

What Can We Do?

The Derby Public Schools Present

Raider Academy for Intervention Support and Education

R.A.I.S.E.

A campus designed tier three intervention to educate, support and transition our students with Derby values and expectations

“Every Student Matters”

What Can We Do?

We would establish an academy within Derby high school, utilizing current space, complete with its own separate entrance



“Every Student Matters”

What Can We Do?

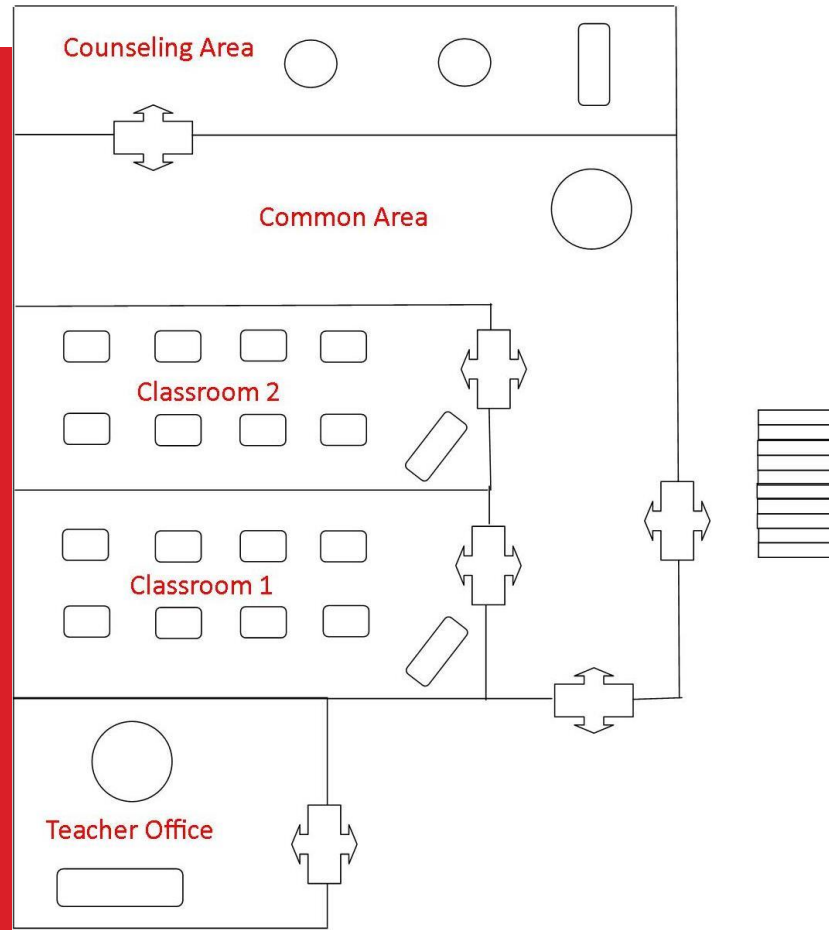
We would redesign current space G02, G02A and a Storage room



“Every Student Matters”

What Can We Do?

What it will look like



“Every Student Matters”

What Can We Do?

The program will be designed to support up to fifteen high school students and five middle school students grades seven and eight.

The library will still educate our students expelled from campus activities.

The program would be staffed by two full-time certified teachers, one special education and one regular education.

They would be supported by two paraprofessionals.

“Every Student Matters”

What Can We Do?

The program would begin after the high school day begins and end before the high school day ends, 8:00 am to 1:30 pm.

Separate transportation for students in the program.

There would be four academic blocks.

There would be opportunities for an elective block as well as a credit recovery block for students who need it.

Breakfast and lunch would be provided.

“Every Student Matters”

What Can We Do?

School Day

Begin	End	Activity	
8:00	8:30	Morning Group	Breakfast with social worker, guidance, school psychologist
8:30	9:10	Block 1	Academic
9:15	9:55	Block 2	Academic
10:00	10:40	Block 3	Academic
10:45	11:25	Block 4	Academic
11:25	11:55	Lunch Group	Lunch along with group or individual counseling
11:55	12:35	Block 5	Elective offering
12:40	1:30	Block 6	Credit Recovery
Allow five minutes between blocks for chaperoned bathroom/break			

“Every Student Matters”

What Can We Do?

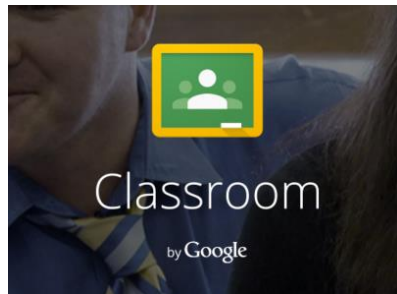
School Day

Students will take English, history, mathematics and science.

Courses are mastery based, and are graded Pass/Fail

Curriculum will be delivered in two groups grades 7/8/9 and grades 10/11/12

Classes will be teacher driven, supported with technology such as



“Every Student Matters”

By keeping some of our students in Derby rather than outplacing them will save money

Estimated average cost per placement ages 12 and up:

2015-2016 = \$66,091.35

2014-2015 = \$71,518.50

Cost shift – reduce a .5 FTE special education and re-distribute students, effectively reducing learning center services

Potentially offering services to neighboring districts, tuition at PACE in Ansonia is upwards of \$25,000

Utilizing existing services for support, school social worker, guidance staff, school psychologist, unified arts teachers

How can we afford this?

How can we not?

Raider

Academy

for

Intervention

Support

and

Education

A campus model to support our students with academic, social and emotional interventions providing them an opportunity to become valued and productive members of the Derby community.

“Every Student Matters”