



ALEDO ISD BOARD MEETING TEMPLATE

MEETING DATE: July 22, 2013

AGENDA ITEM: Consider Approval of Final Design for the Construction Projects for TLC and AHS Vestibule

PRESENTER: Earl Husfeld

ALIGNS TO BOARD GOAL(S): Financial/Facilities – The District shall exhibit excellence in financial and facility planning, management, and stewardship.

BACKGROUND INFORMATION:

- At the May 20th board meeting, the Board of Trustees approved proceeding with the proposed addition/renovation of the Aledo Learning Center and the redesign of the Aledo High School vestibule along with Construction Manager At-Risk (CMAR) as the procurement method to be used for these construction projects.
- At the June 17th board meeting, the Board of Trustees approved Buford-Thompson Company as the top ranked proposer to the District's CMAR request for proposal and authorized district staff to enter negotiations with Buford-Thompson Company to finalize a contract.

ADMINISTRATIVE CONSIDERATIONS:

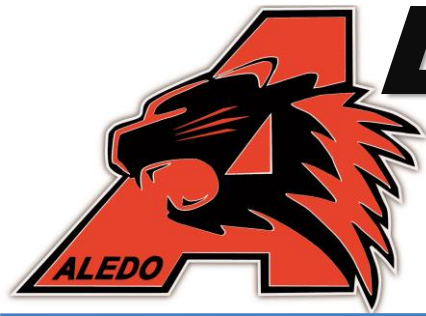
- Since the June 17th board meeting, district staff have met with VLK Architects (VLK) and Buford-Thompson Company (BTC) staff to develop final design options and conceptual cost estimates for these projects.
- The following pages contain the presentation we are discussing in detail this evening. Representatives of VLK and BTC are available to answer questions.
- After the final design options are selected this evening, the planned next steps are as follows:
 - VLK, BTC, and district staff will finalize design and construction documents during August and September.
 - During September and October, BTC will finalize bids/proposals and submit a guaranteed maximum price.
 - At the October 21st board meeting, the Board of Trustees will be asked to consider approval of BTC's guaranteed maximum price for the projects.

FISCAL NOTE:

The costs associated with these construction projects will be paid from remaining 2008 bond funds.

ADMINISTRATIVE RECOMMENDATION:

The Administration recommends the Board of Trustees approve the final design for the Aledo Learning Center addition/renovation and the Aledo High School entry vestibule.



ALEDO I.S.D.

Proposed Expansion to

The Learning Center

Working Session



VLK | ARCHITECTS

July 17, 2013





Proposed Expansion to The Learning Center

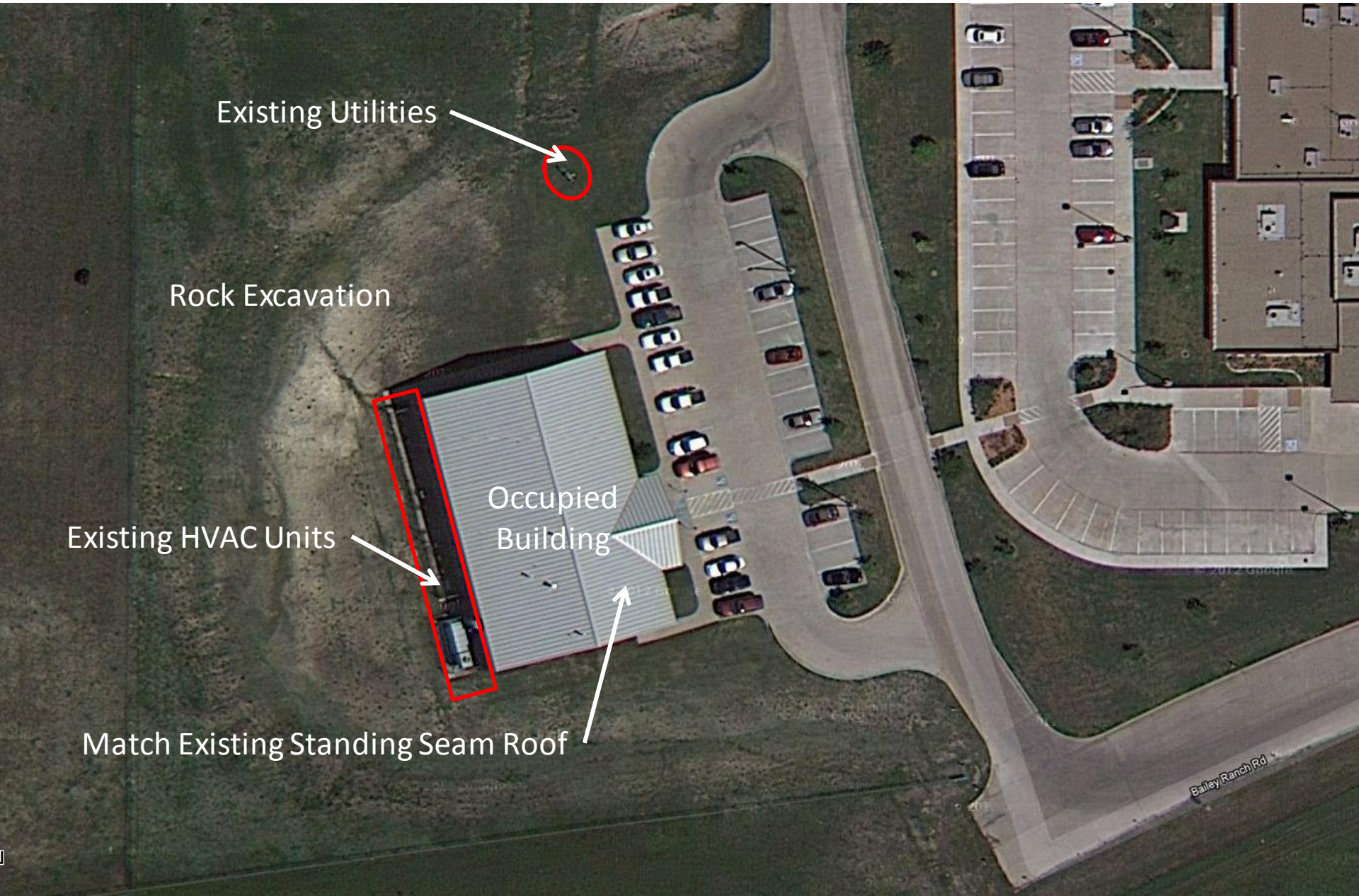
Existing



VLK | ARCHITECTS



Considerations



Existing Utilities

Rock Excavation

Existing HVAC Units

Occupied Building

Match Existing Standing Seam Roof

Bailey Ranch Rd



Proposed Expansion to The Learning Center Considerations



VLK | ARCHITECTS

How will the building:

- Aesthetically integrate into the overall campus?
- Best support learning and opportunities for students?
- Support anticipated growth of the district?
- Support the flexible needs of the District?
- Accommodate changes in student testing?



Proposed Expansion to The Learning Center

Proposed Options



VLK | ARCHITECTS

Option 1:

- 10,073 SF
- Conventional steel-frame construction

Option 2:

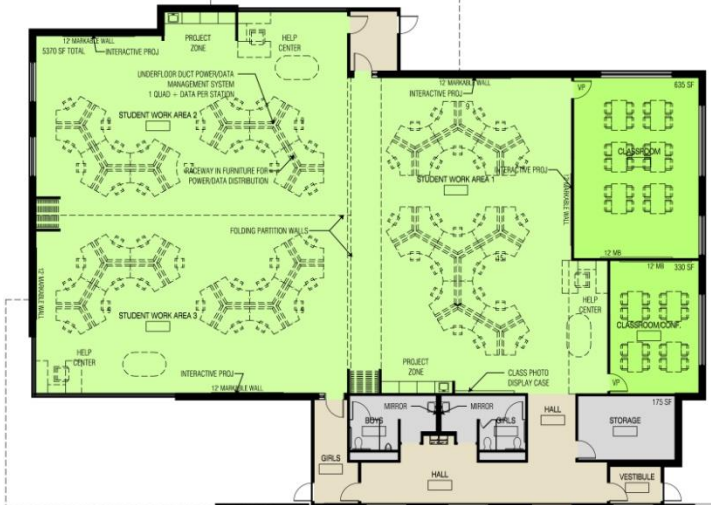
- 9,263 SF
- Pre-engineered steel structure

Option 3:

- 9,294 SF
- Modified version of Option 1 to reduce square footage
 - Reductions in restrooms, storage and project areas

Option 1 Plan

- Each student to have a workstation
- Provides classroom space
- Divisible into three smaller spaces
- Highly flexible for multiple uses



Alternative Education additions: 7,862 SF
60 Students

Site improvements



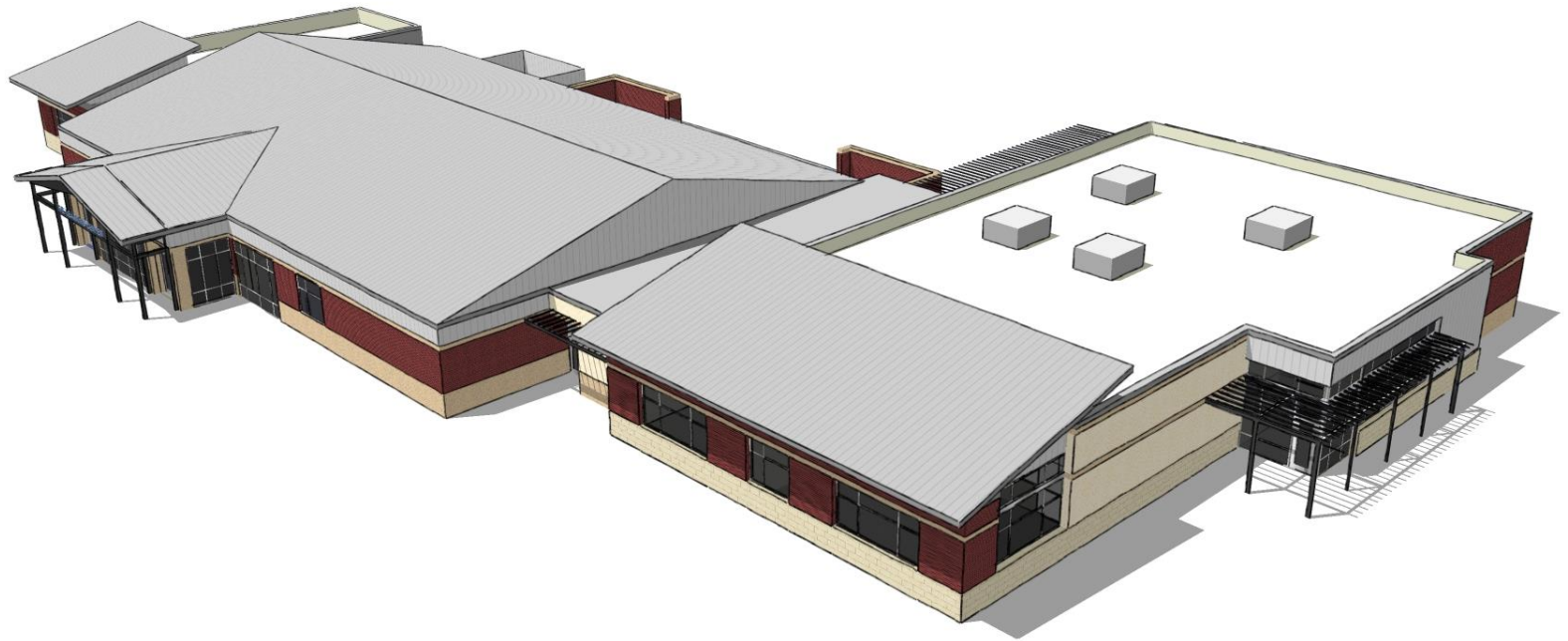
New entrance and administration renovations: 157 SF

DAEP additions and renovations: 2,054 SF

Total: 10,073 SF

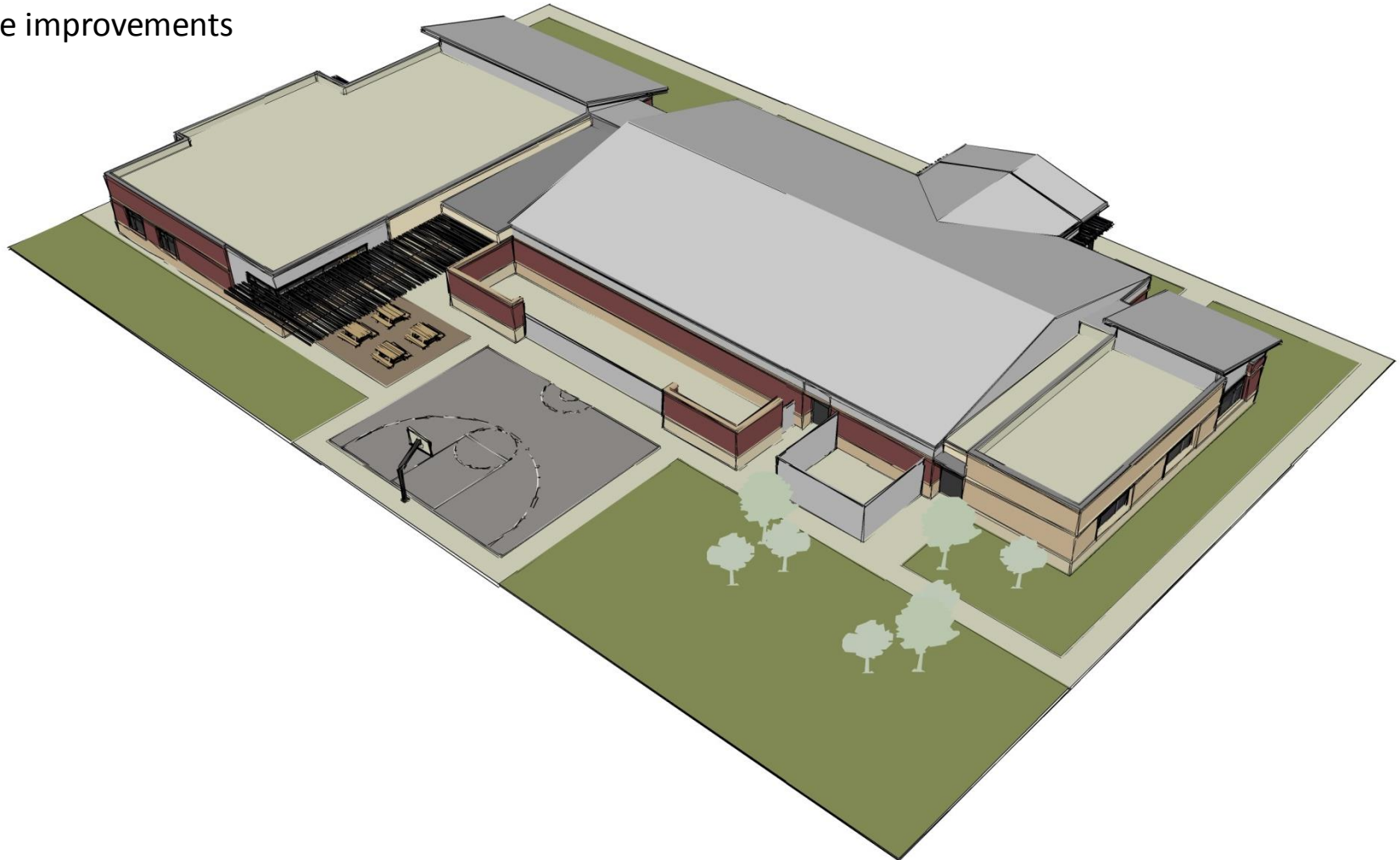
Option 1 Concept

- Addition to be complimentary both to existing building and to other buildings on the campus
- Simple structural frame & low-slope roof
- New HVAC units to be discretely located on roof
- Upgrade entrance



Option 1 Concept

- Addition to be complimentary both to existing building and to other buildings on the campus
- Designed with low-slope roof allows new HVAC units to be discretely located on the roof
- Upgrade entrance
- Site improvements



Option 1 Concept



Option 1 Concept



Option 2 Plan



Alternative Education
additions: 7,280 SF
60 Students

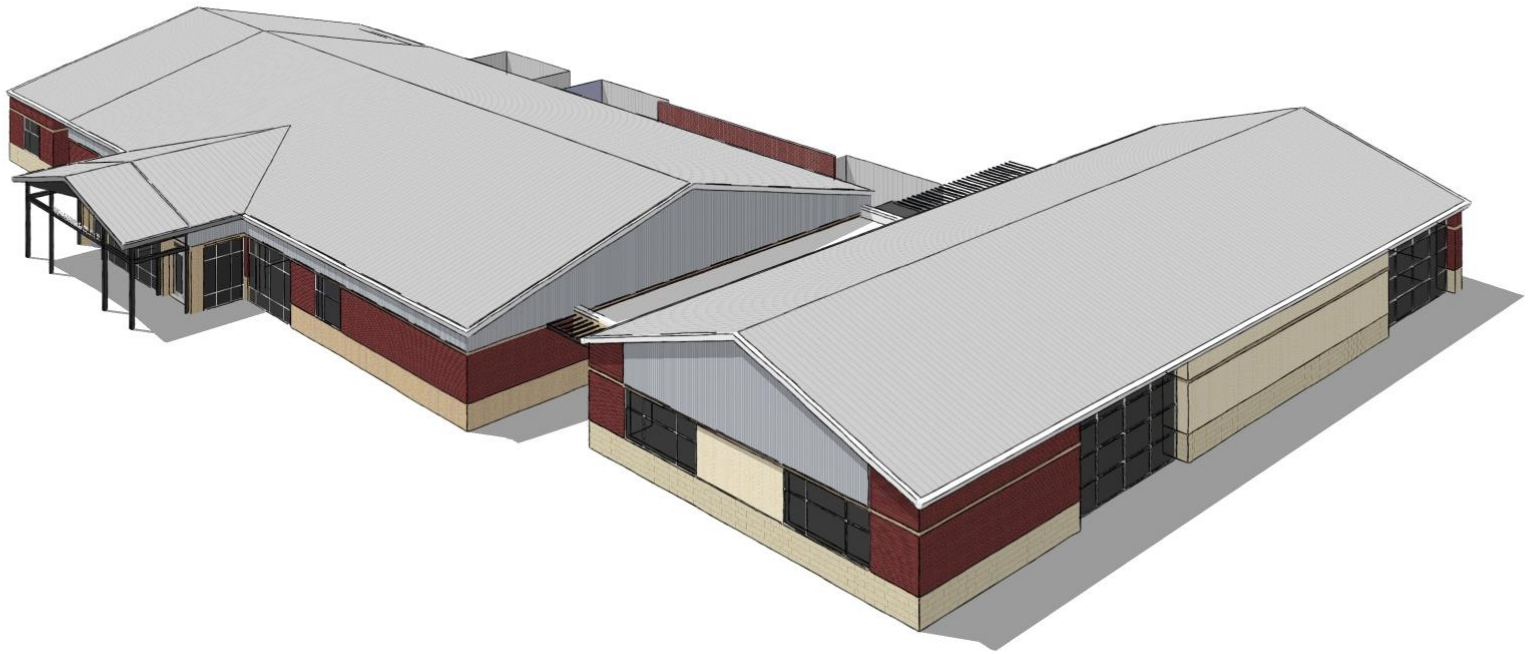
Site improvements

New entrance and
administration
renovations: 157 SF

DAEP additions and renovations:
1,826 SF

Total: 9,263 SF

Option 2 Concept



Option 2 Concept



Option 2 Concept



Option 3 Plan

- Each student to have a workstation
- Provides classroom space
- Divisible into three smaller spaces
- Highly flexible for multiple uses



Alternative Education additions: 7,083 SF
60 Students

Site improvements



New entrance and administration renovations: 157 SF

DAEP additions and renovations: 2,054 SF

Total: 9,294 SF



Proposed Expansion to The Learning Center Conceptual Estimates



VLK | ARCHITECTS

Option 1:

- \$2,301,482

Option 2:

- \$2,007,571

Option 3:

- \$2,194,127



LED0 I.S.D.

Proposed Controlled Entry Vestibule

Aledo High School

Working Session

July 17, 2013



VLK | ARCHITECTS

Existing Plan



Option 1 Plan



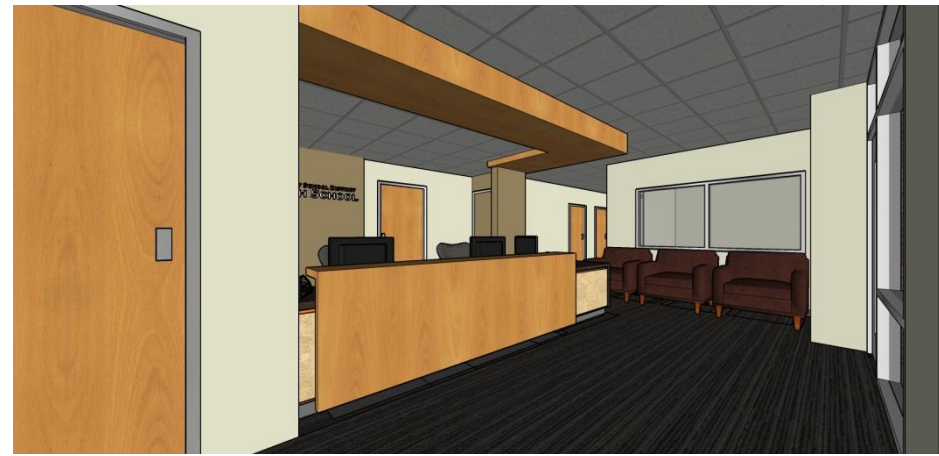
Option 1 Interior Views



Option 2 Plan



Option 2 Interior Views





Proposed Controlled Entry Vestibule Conceptual Estimates



Option 1:

- \$138,483*

Option 2:

- \$119,375*

*Note: General Conditions included in Learning Center project



LEDO I.S.D.

Proposed Controlled Entry Vestibule

Aledo High School

Working Session

July 17, 2013



VLK | ARCHITECTS