

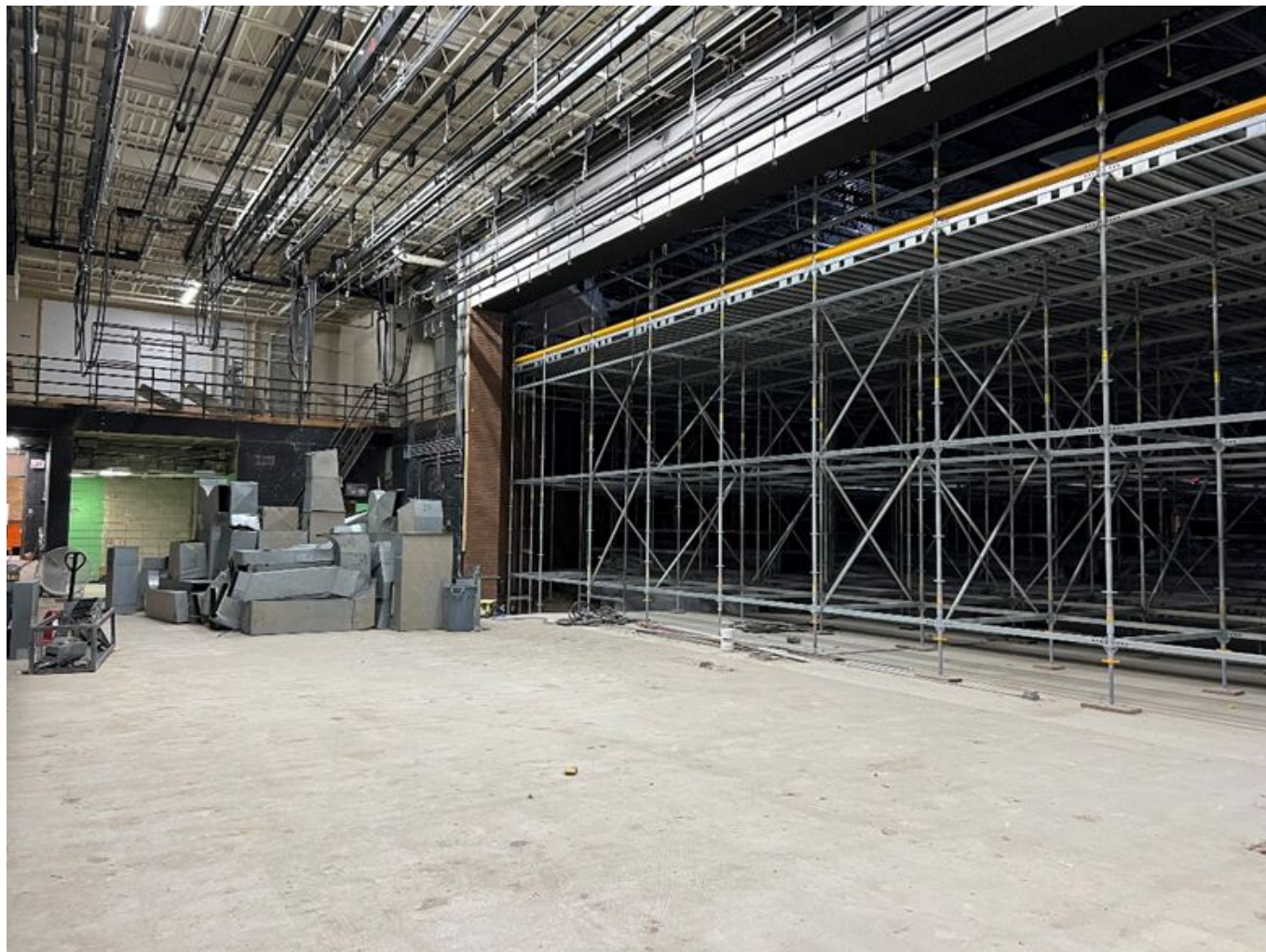


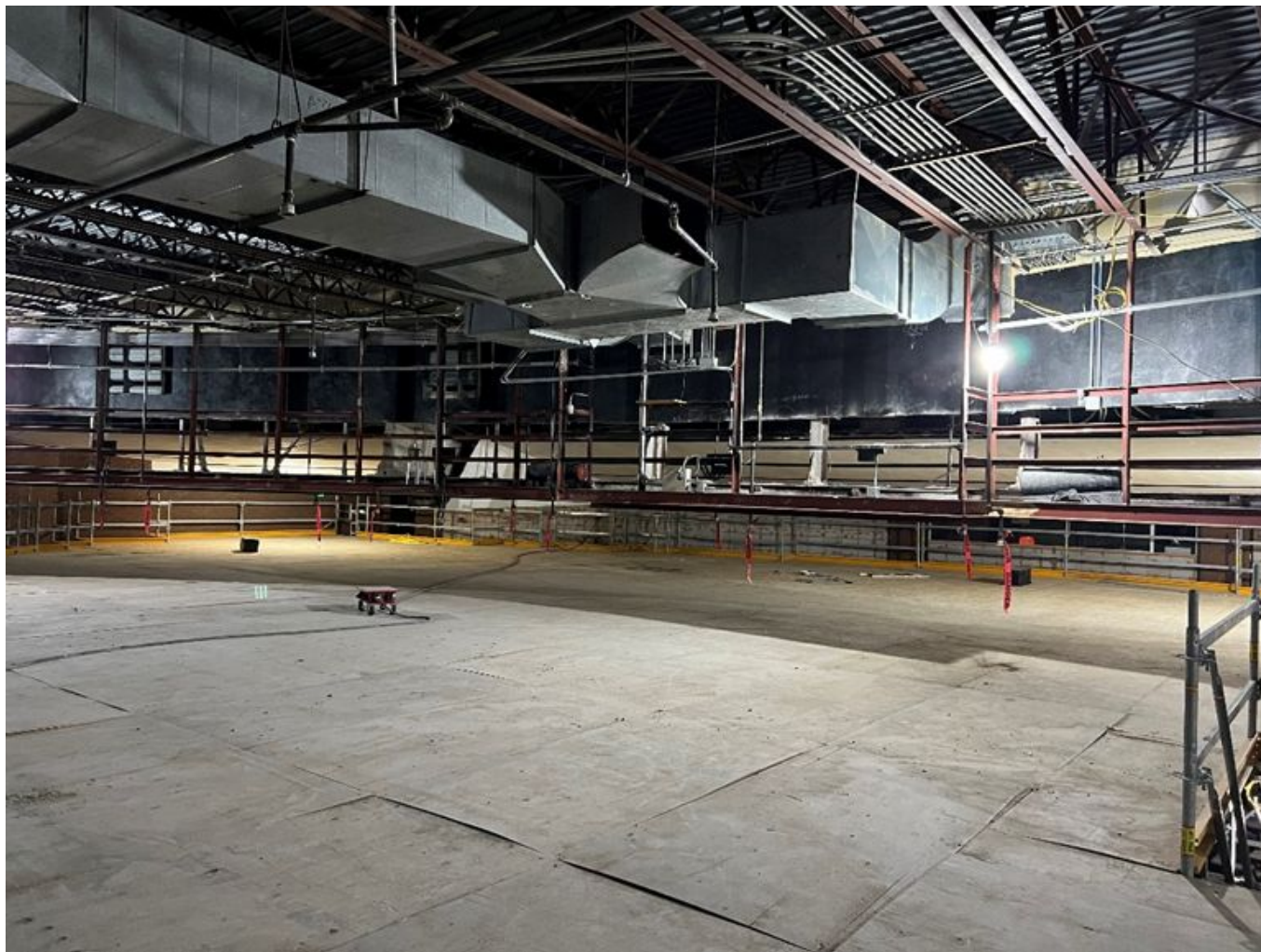
2025 **Summer Construction**



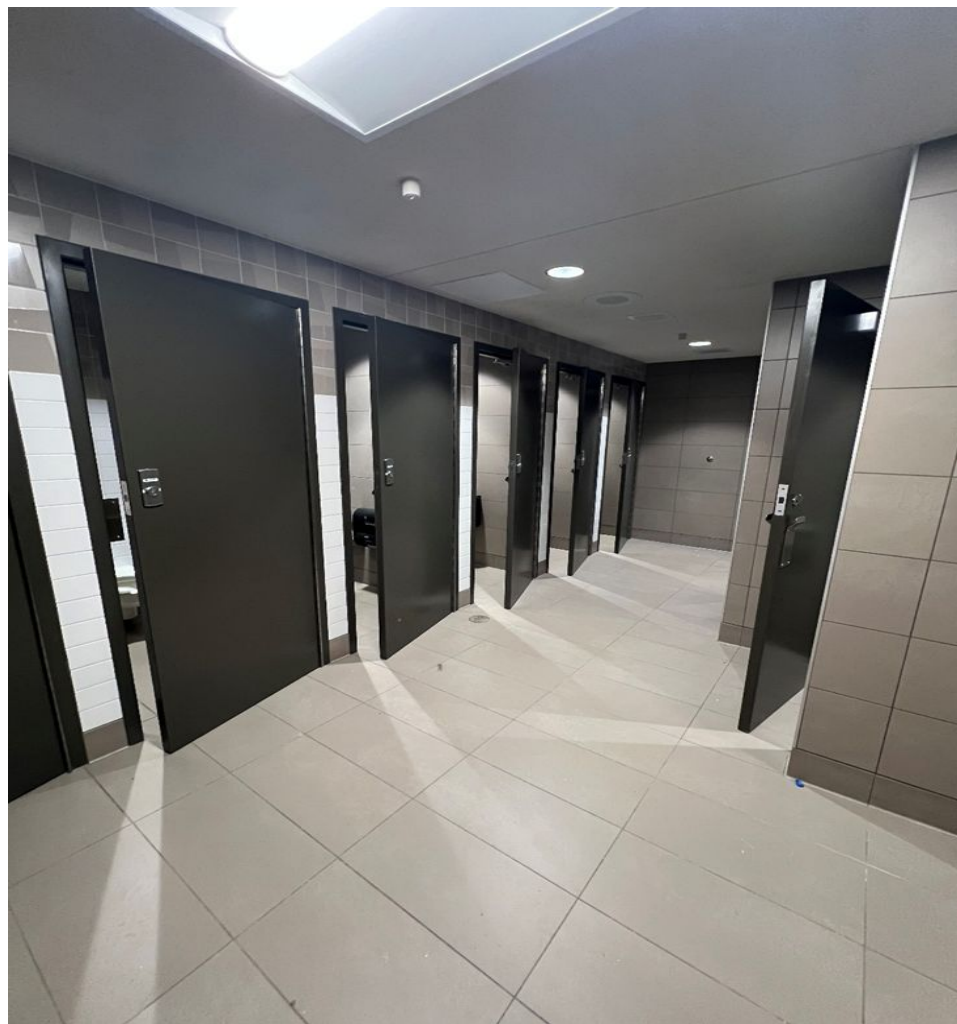
EDINA HIGH SCHOOL

- Continuation of mechanical upgrades project
 - Boiler system, air handling units, etc.
- Renovation of areas affected by mechanical work
- Fick Auditorium deferred maintenance - lighting, flooring, sound panels/clouds, etc.
- Gym floor repair















EDINA COMMUNITY CENTER

- Complete rehabilitation of existing Tennis Courts
 - Earthwork, framing and paving, surfacing, etc.
- Relocation of lower courts next to upper courts





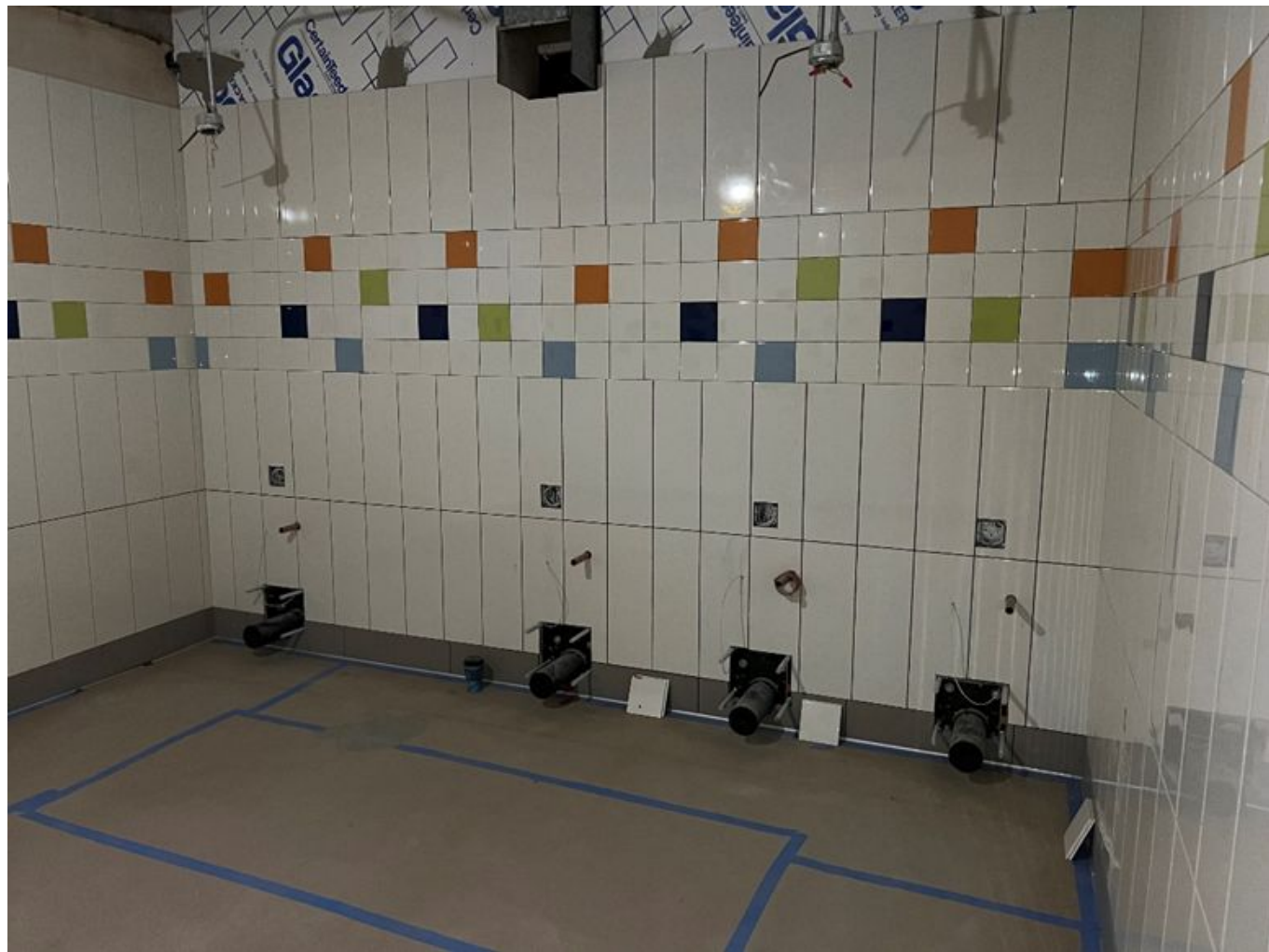
NORMANDALE ELEMENTARY

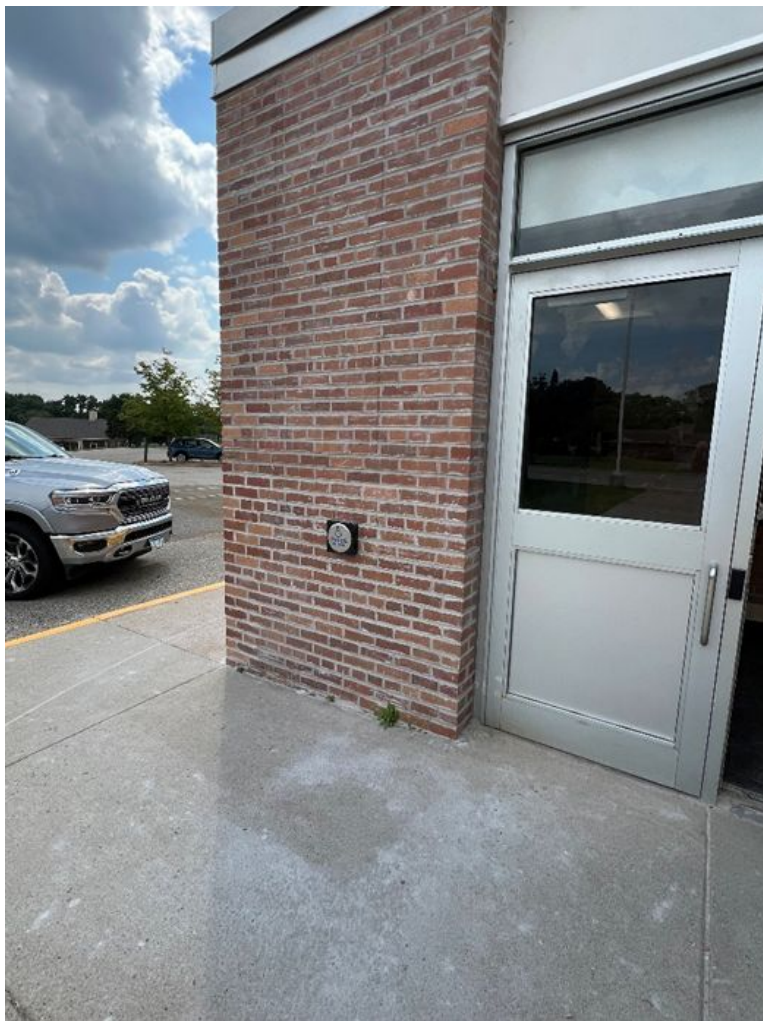
- Repair and maintenance of failing portions of turf surface
- Full replacement of the turf is part of the current long-term facilities maintenance 10-year plan



CORNELIA ELEMENTARY

- Repair and maintenance of exterior brick walls (tuckpointing)
- Deferred maintenance of restrooms
 - 4 gang restrooms, 3 staff restrooms, ADA





CREEK VALLEY ELEMENTARY

- Repair and reconfiguration of loading dock that had been damaged by vehicles
 - Elimination of cantilevered dock





TRANSPORTATION CENTER

- Installation of electrical panels and conduit to allow for eventual installation of charging stations for electric buses.
- Non-LTFM project - funds on hand from 2021B voter-approved bond.



OTHER SITES

- South View - parking lot resurfacing
- Valley View - restroom repairs; lighting replacement
- Concord - outdoor learning space in courtyard;
re-keying of doors (security)
- Countryside - No major construction
- Highlands - No major construction



QUESTIONS?

Edina Public Schools

