

Oak Park District 97

Capacity Study Follow up

STR

ENHANCING NOW ENVISIONING FUTURES

Celebrating 45 Years of Service to Illinois Public Schools

Capacity Study Results

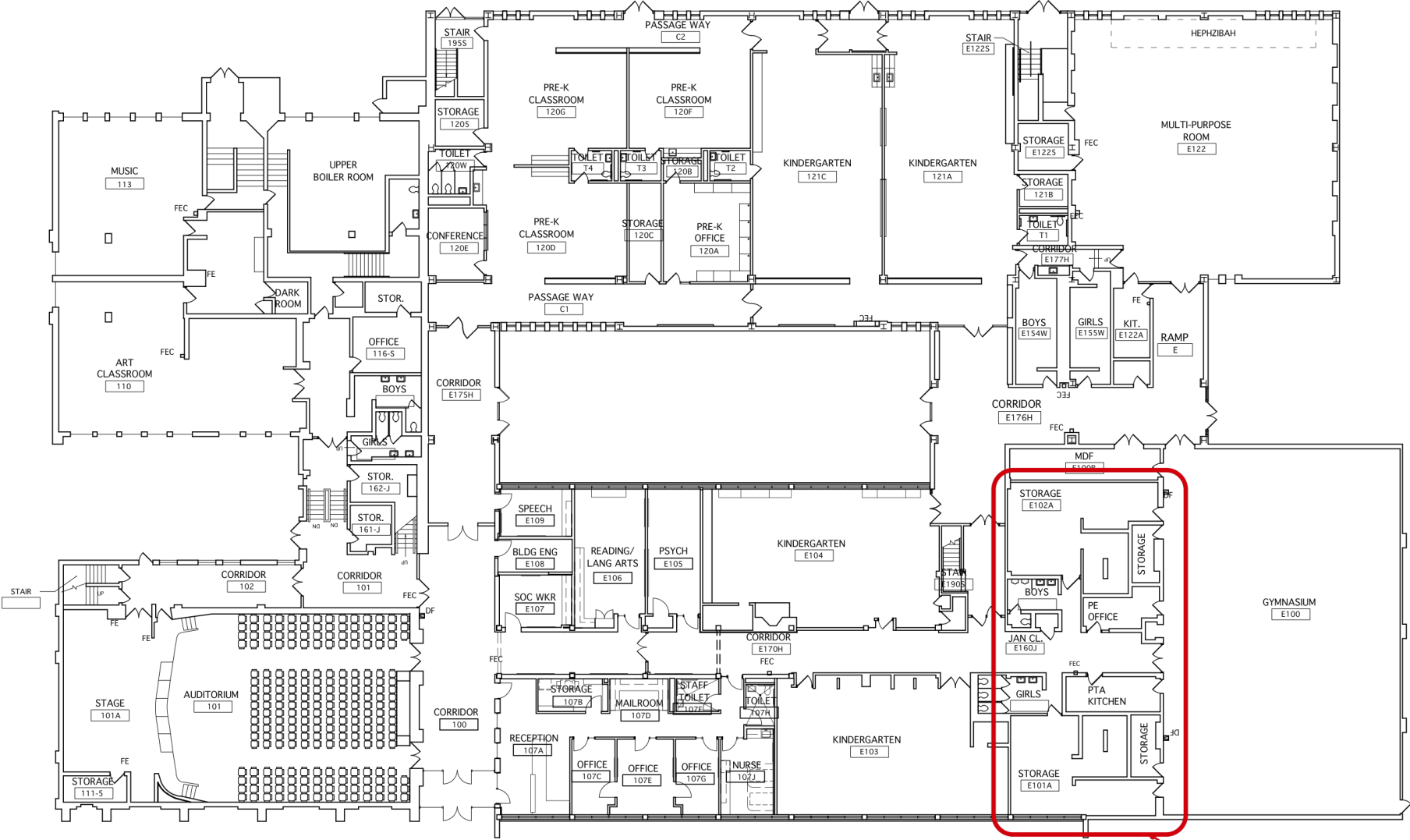
STR

School Facility Name	Building Capacity Range			Ehler's Projected Enrollment 2017/2018
	Low	High	w/ Aide	
Beye Elementary	360	442	506	449
Hatch Elementary	345	417	477	314
Holmes Elementary	475	586	666	550
Irving Elementary	475	586	666	550
Lincoln Elementary	575	701	797	603
Longfellow Elementary	560	689	773	709
Mann Elementary	460	556	636	464
Whittier Elementary	365	457	517	382
Brooks Middle School	988	1160	--	1000
Julian Middle School	988	1160	--	1047

**As a result of the Capacity Study above,
D97 requested STR recommend options for Review
to gain classroom space at Longfellow and Beye Schools**

Longfellow: OPTION 1

STR



EXISTING LOCKER AND SHOWER SPACES USED AS STORAGE

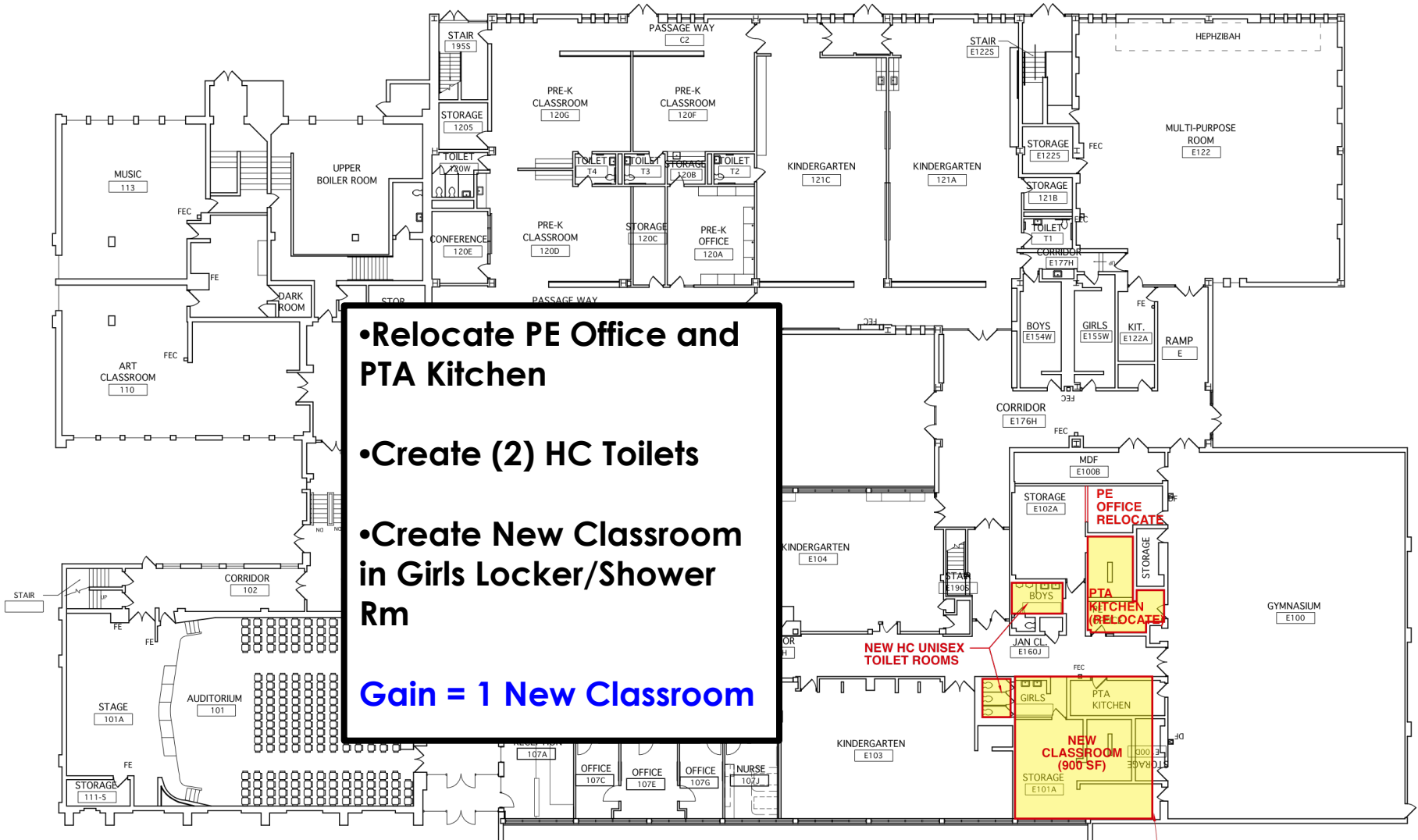
FIRST FLOOR PLAN

NOT TO SCALE



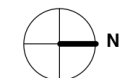
Longfellow: OPTION 1

STR



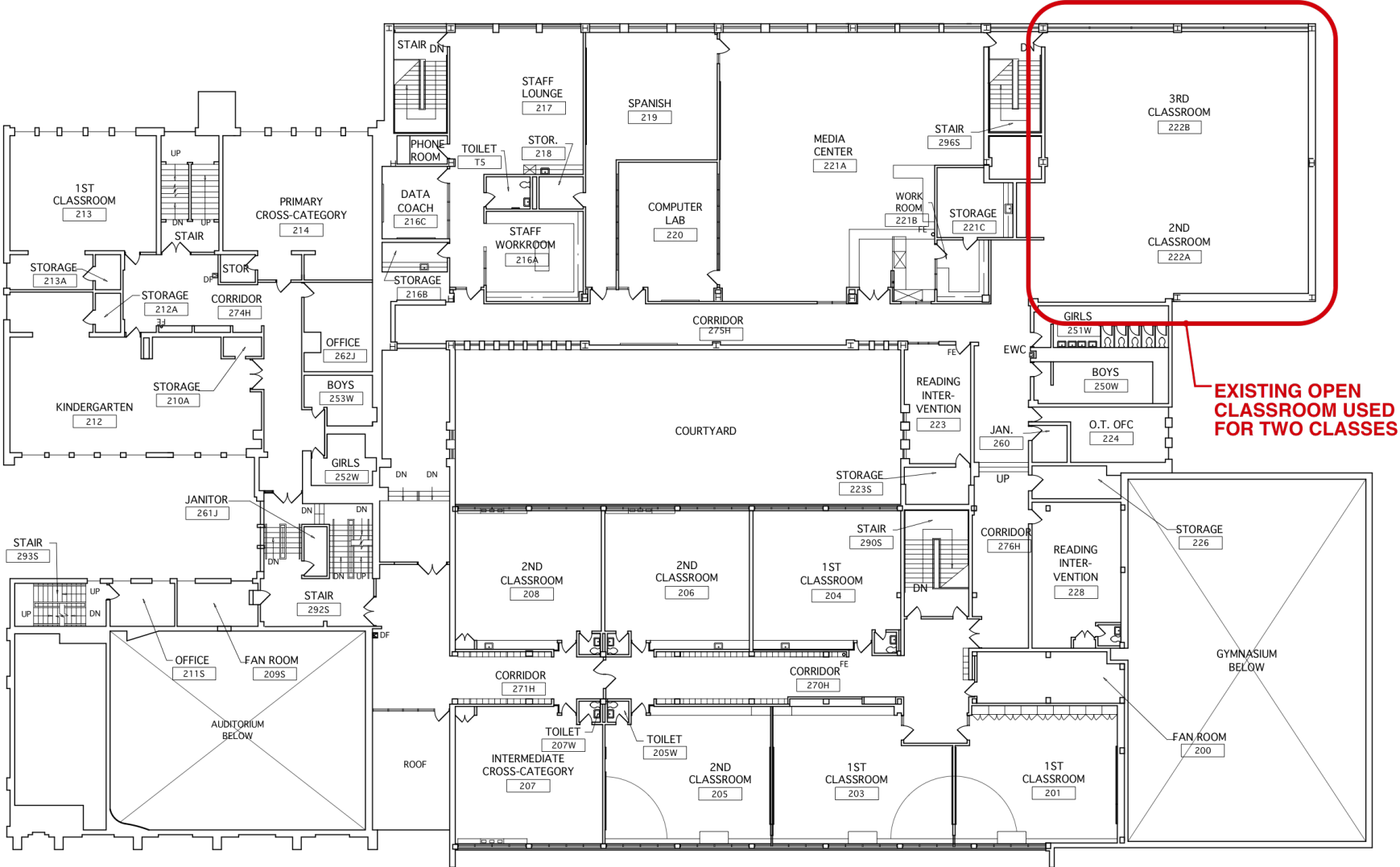
FIRST FLOOR PLAN

NOT TO SCALE



Longfellow: OPTION 2

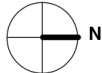
STR



EXISTING OPEN CLASSROOM USED FOR TWO CLASSES

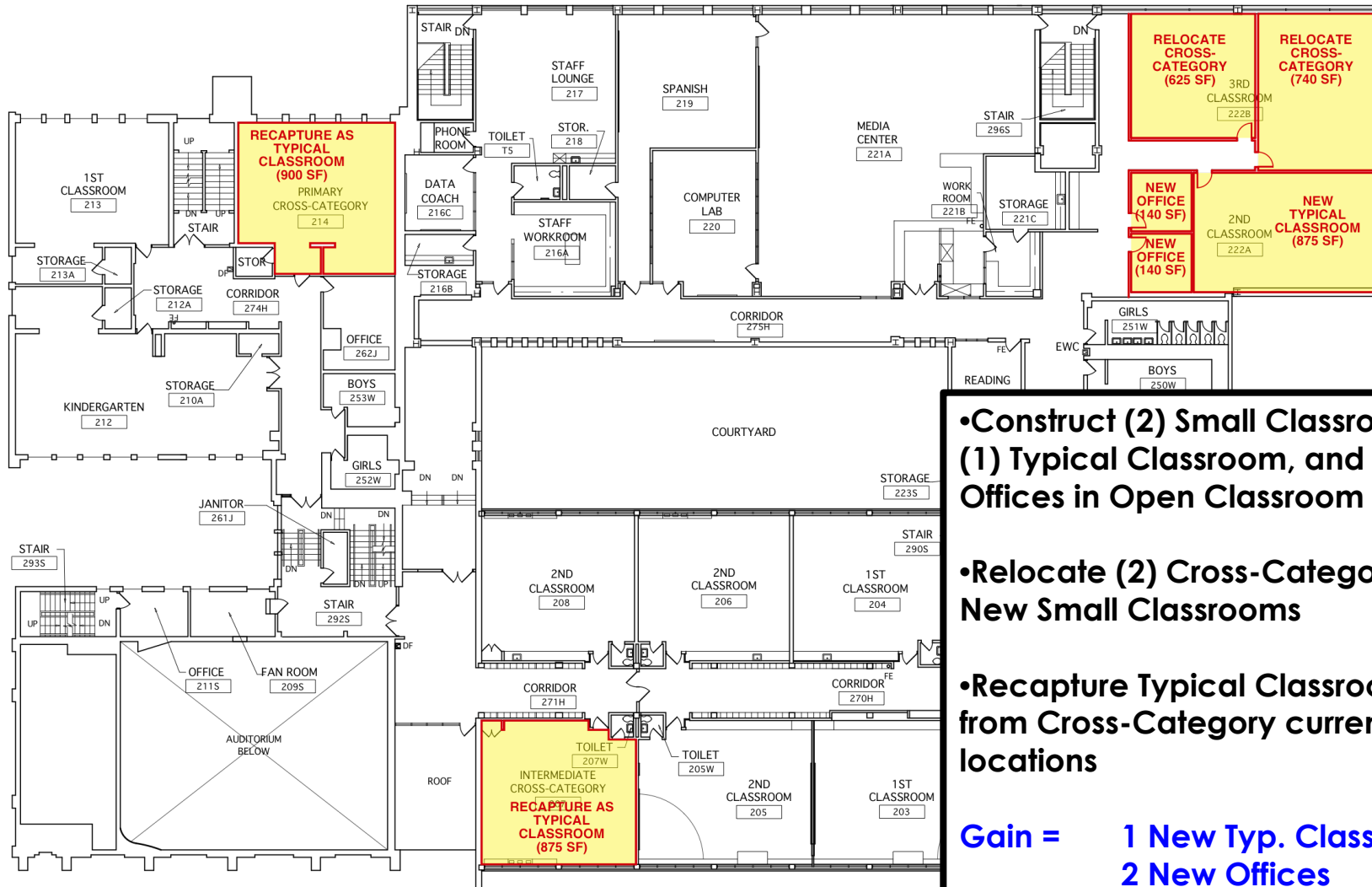
SECOND FLOOR PLAN

NOT TO SCALE



Longfellow: OPTION 2

STR



- Construct (2) Small Classrooms, (1) Typical Classroom, and (2) Offices in Open Classroom Space
 - Relocate (2) Cross-Category to New Small Classrooms
 - Recapture Typical Classrooms from Cross-Category current locations
- Gain = 1 New Typ. Classroom
2 New Offices**

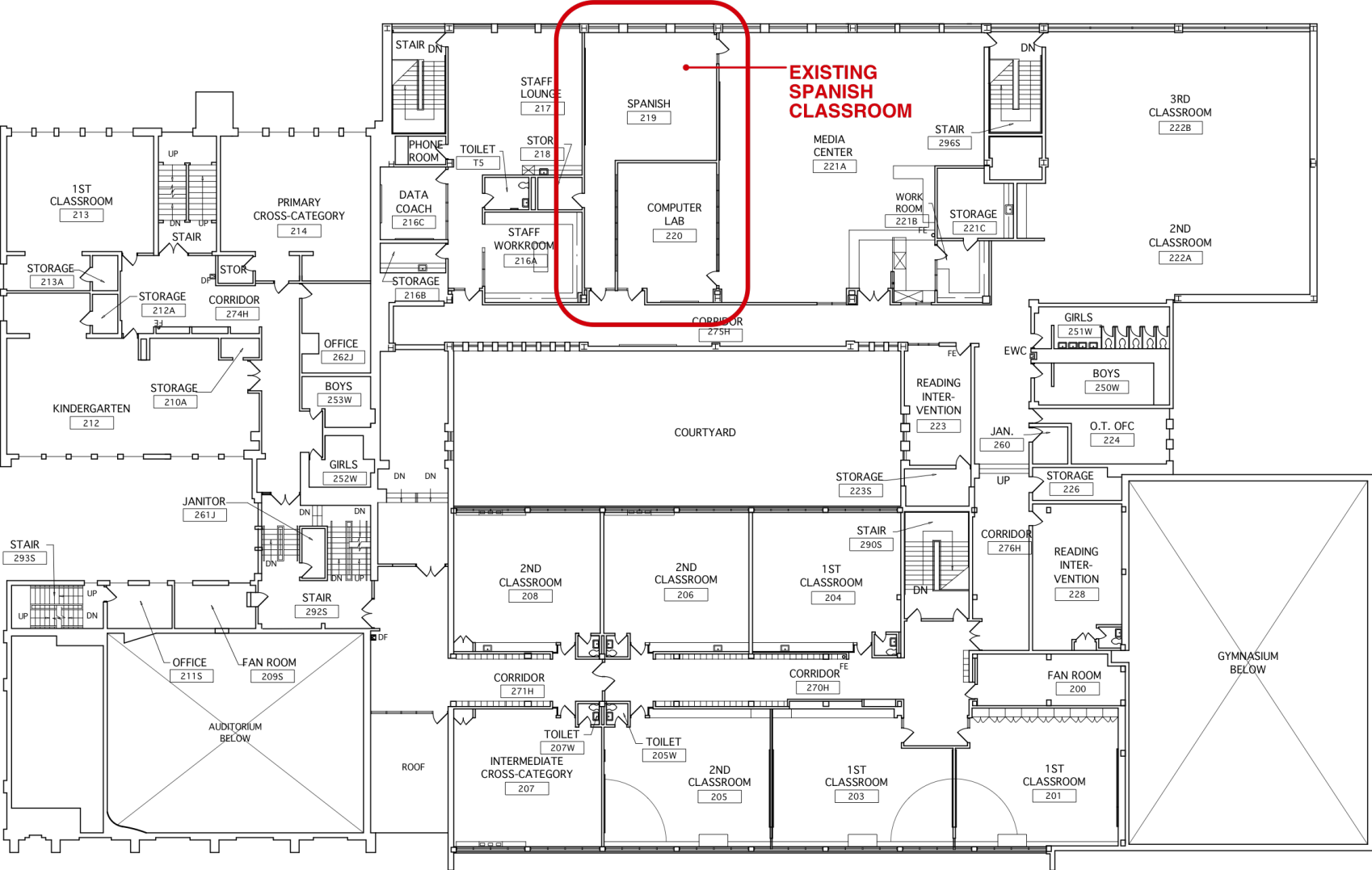
SECOND FLOOR PLAN

NOT TO SCALE



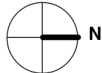
Longfellow: OPTION 3

STR



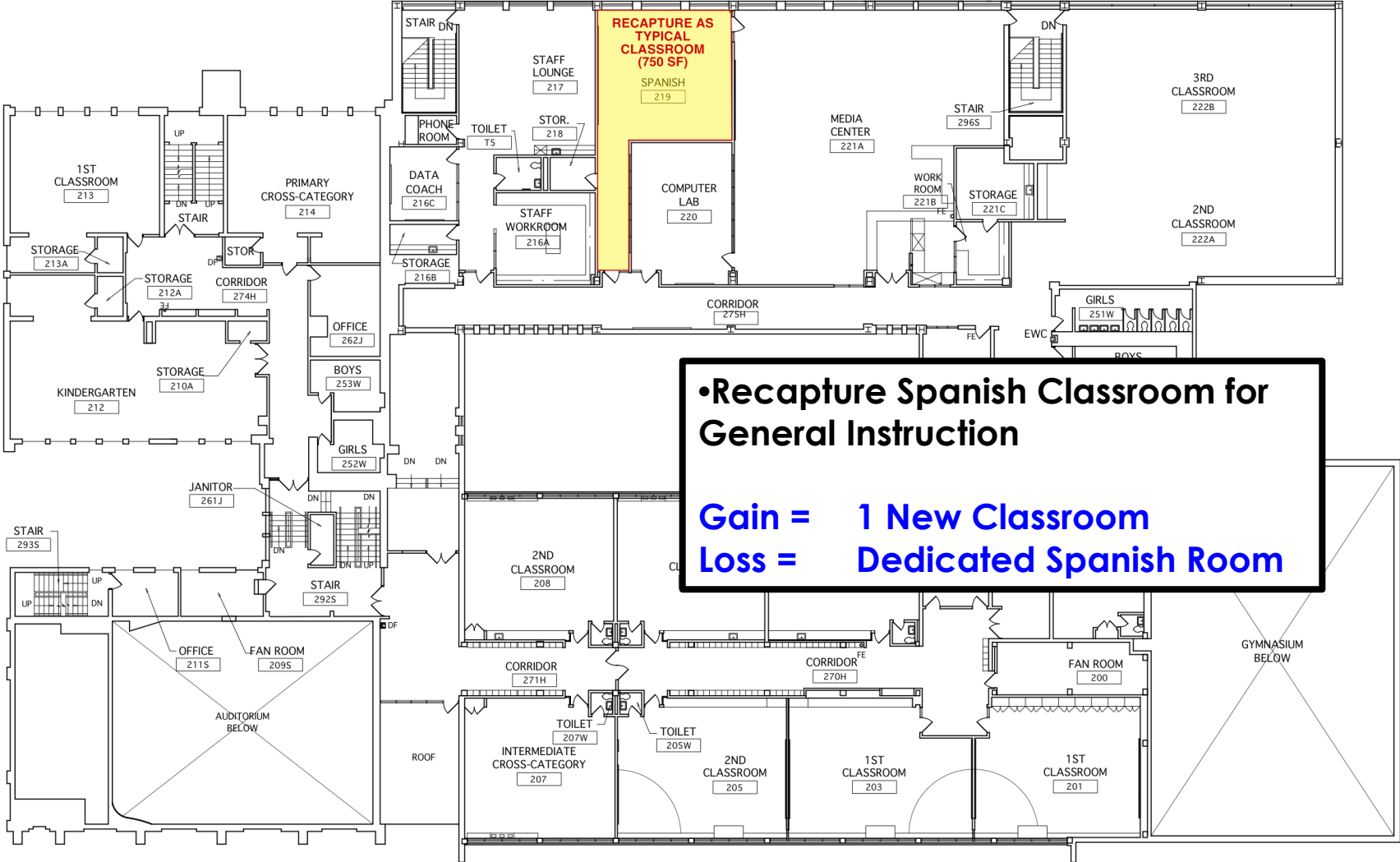
SECOND FLOOR PLAN

NOT TO SCALE



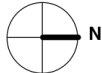
Longfellow: OPTION 3

STR



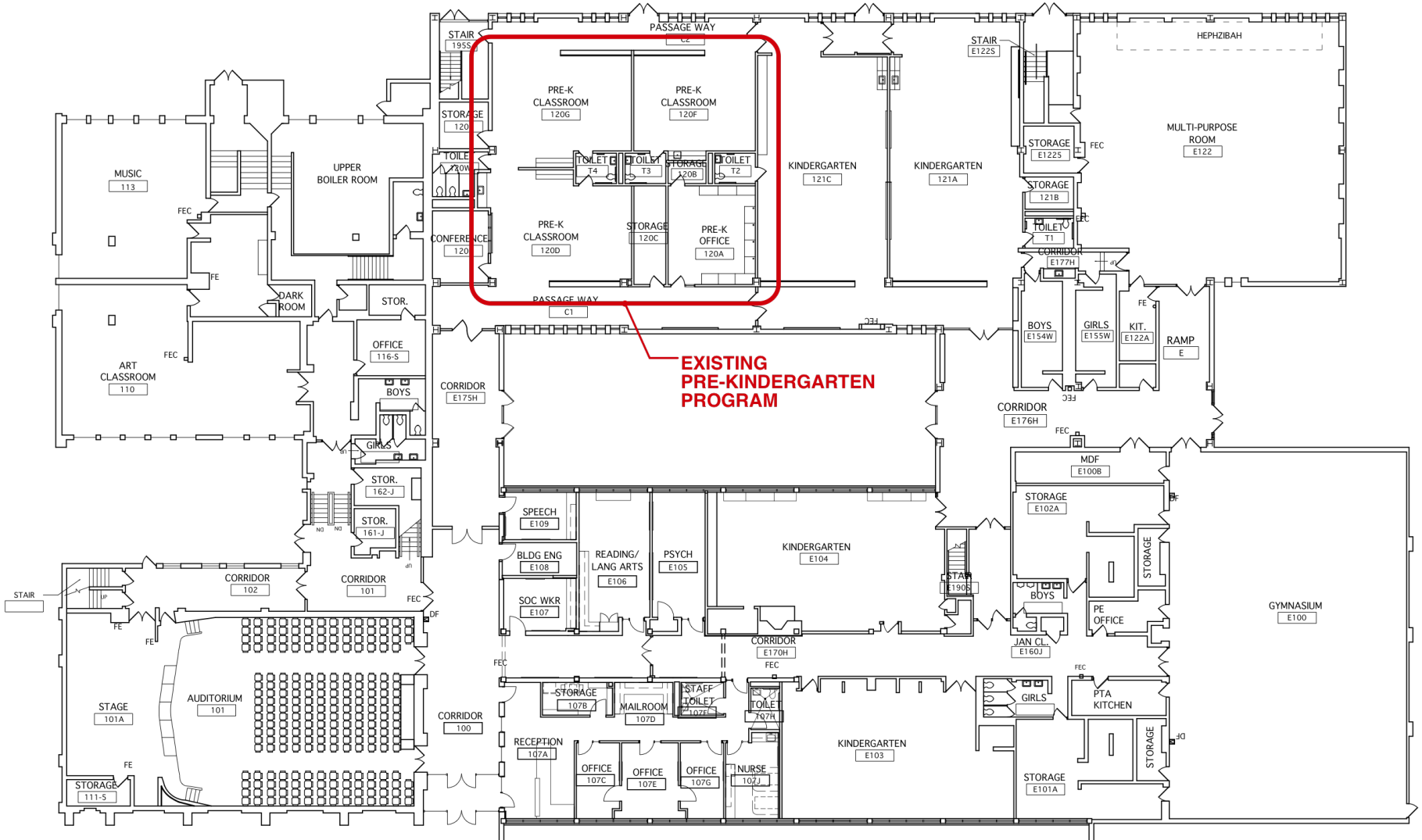
SECOND FLOOR PLAN

NOT TO SCALE



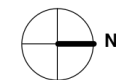
Longfellow: OPTION 4

STR



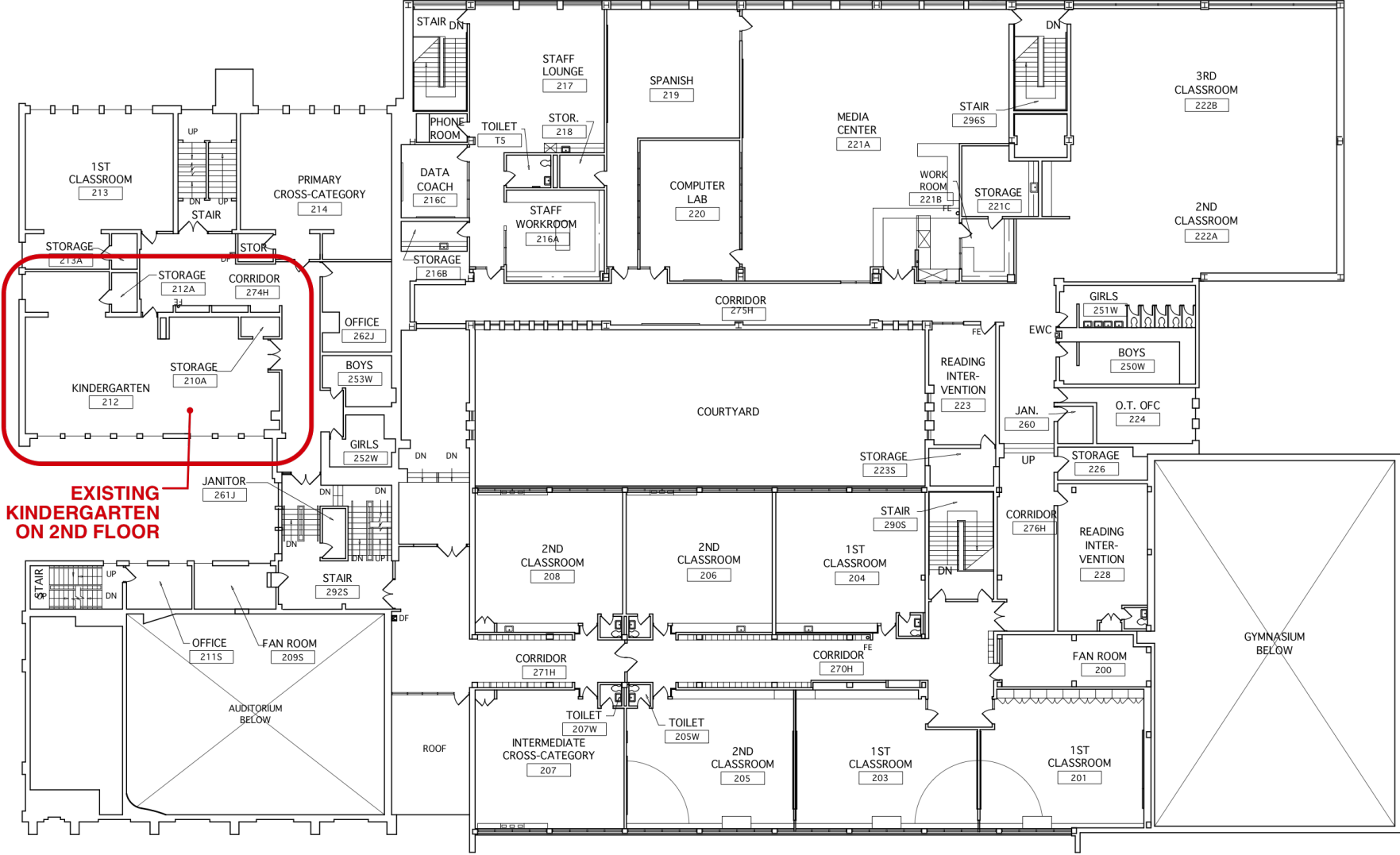
FIRST FLOOR PLAN

NOT TO SCALE



Longfellow: OPTION 4

STR



**EXISTING
KINDERGARTEN
ON 2ND FLOOR**

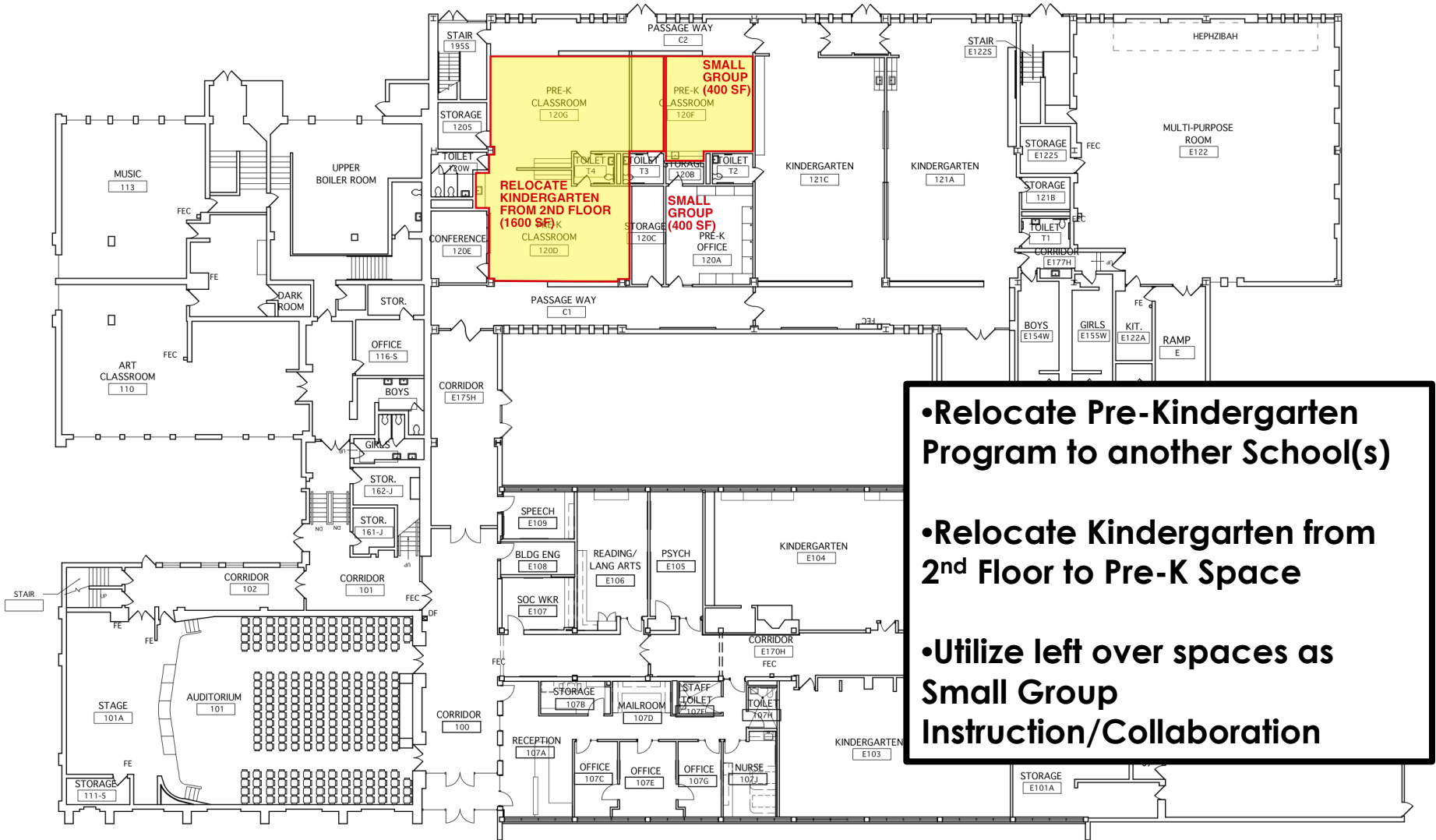
SECOND FLOOR PLAN

NOT TO SCALE



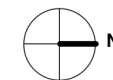
Longfellow: OPTION 4

STR



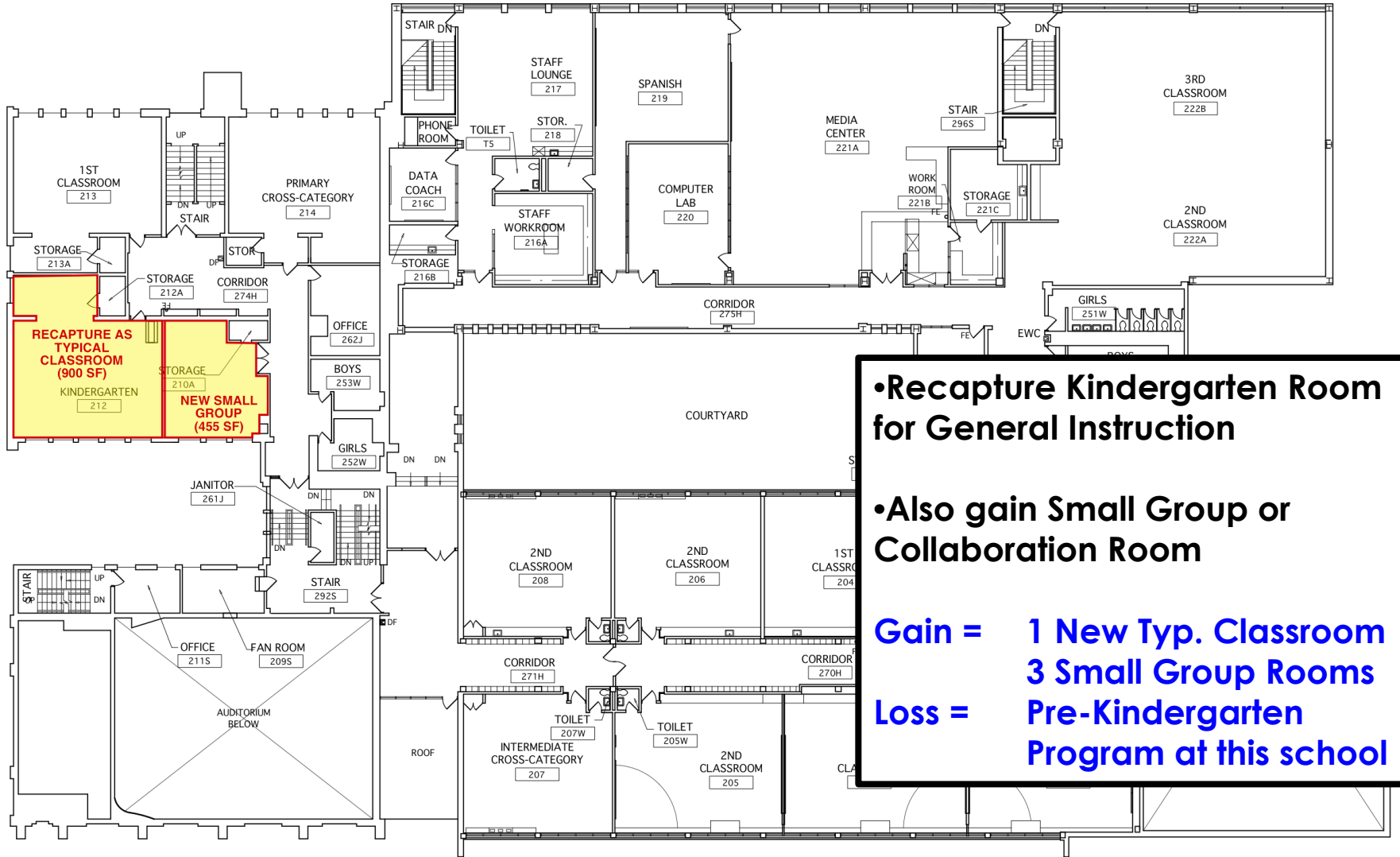
FIRST FLOOR PLAN

NOT TO SCALE



Longfellow: OPTION 4

STR



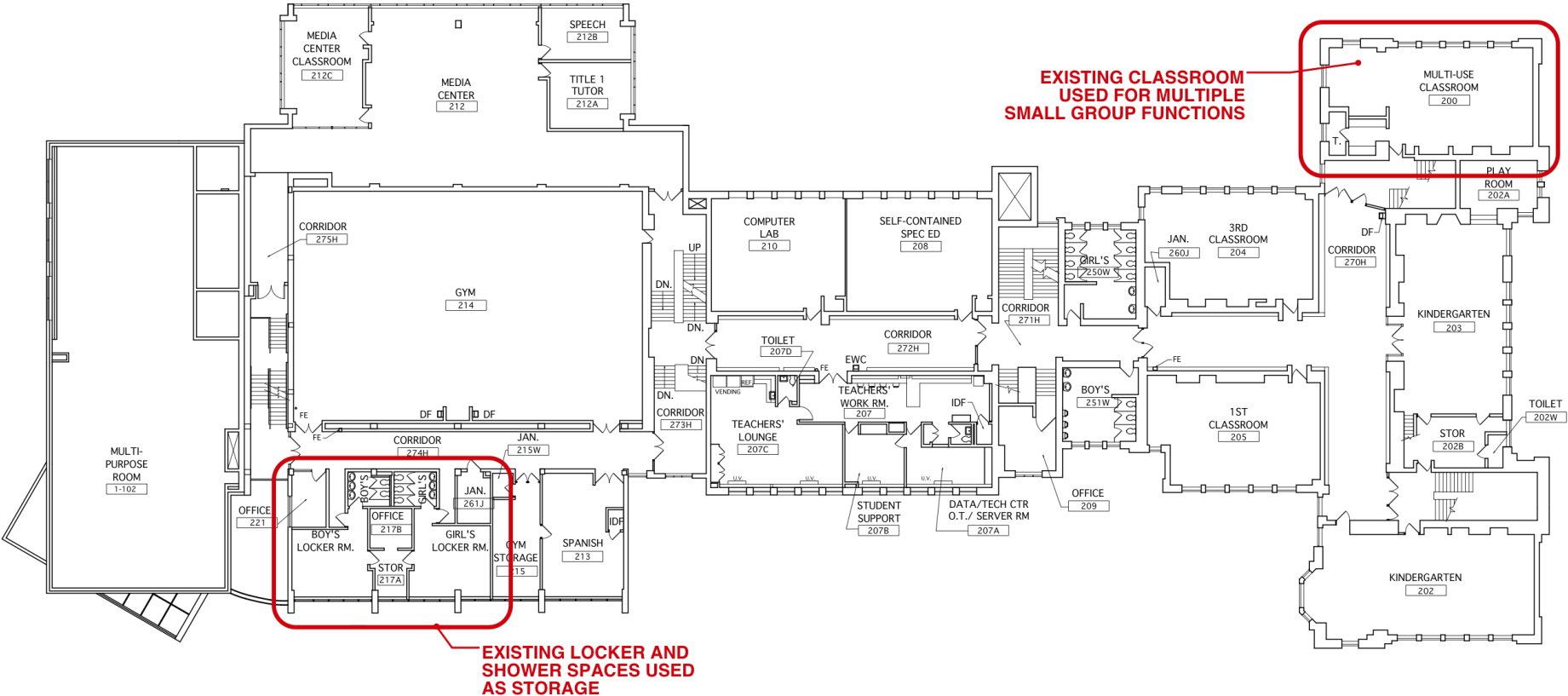
SECOND FLOOR PLAN

NOT TO SCALE



Beye: OPTION 1

STR



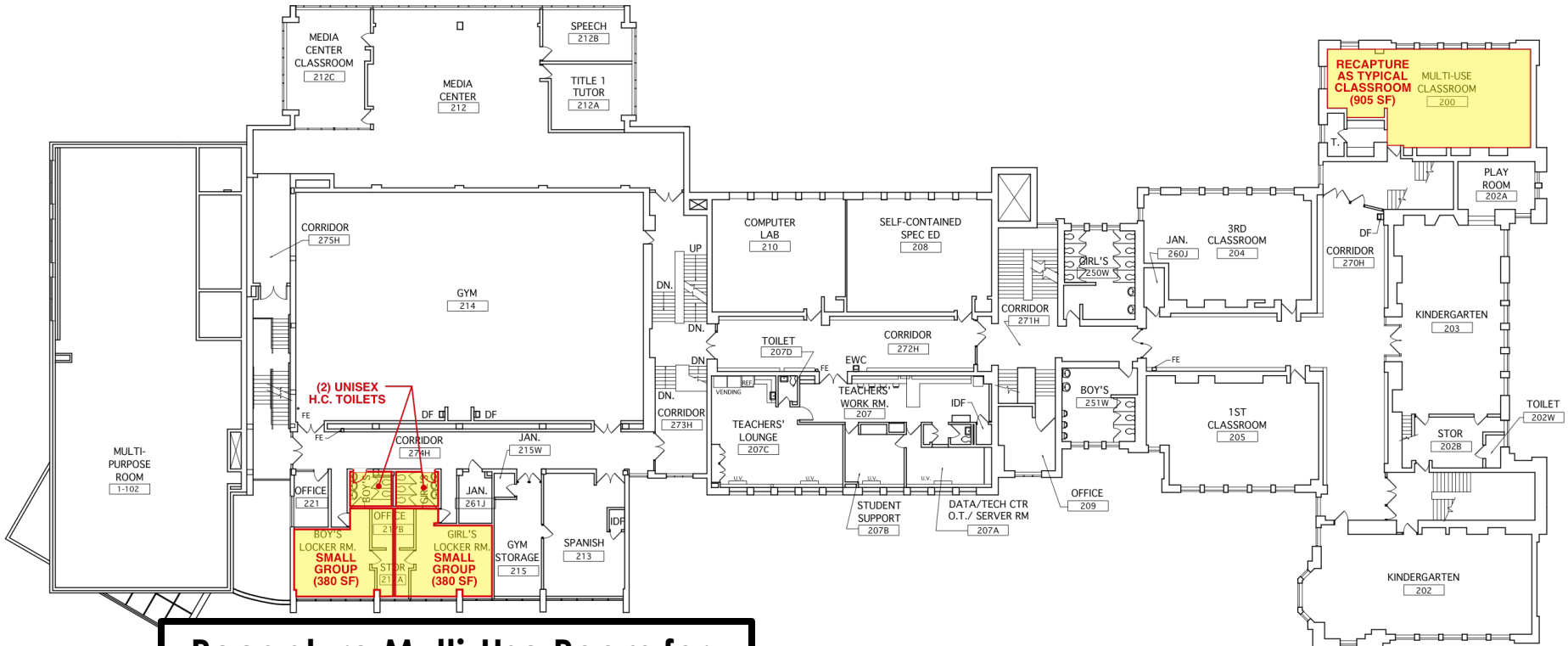
SECOND FLOOR PLAN

NOT TO SCALE



Beye: OPTION 1

STR



- Recapture Multi-Use Room for General Instruction
 - Renovate Locker Rooms into Small Group Rooms
 - Create (2) HC Toilet Rooms
- Gain = 1 New Typ. Classroom**

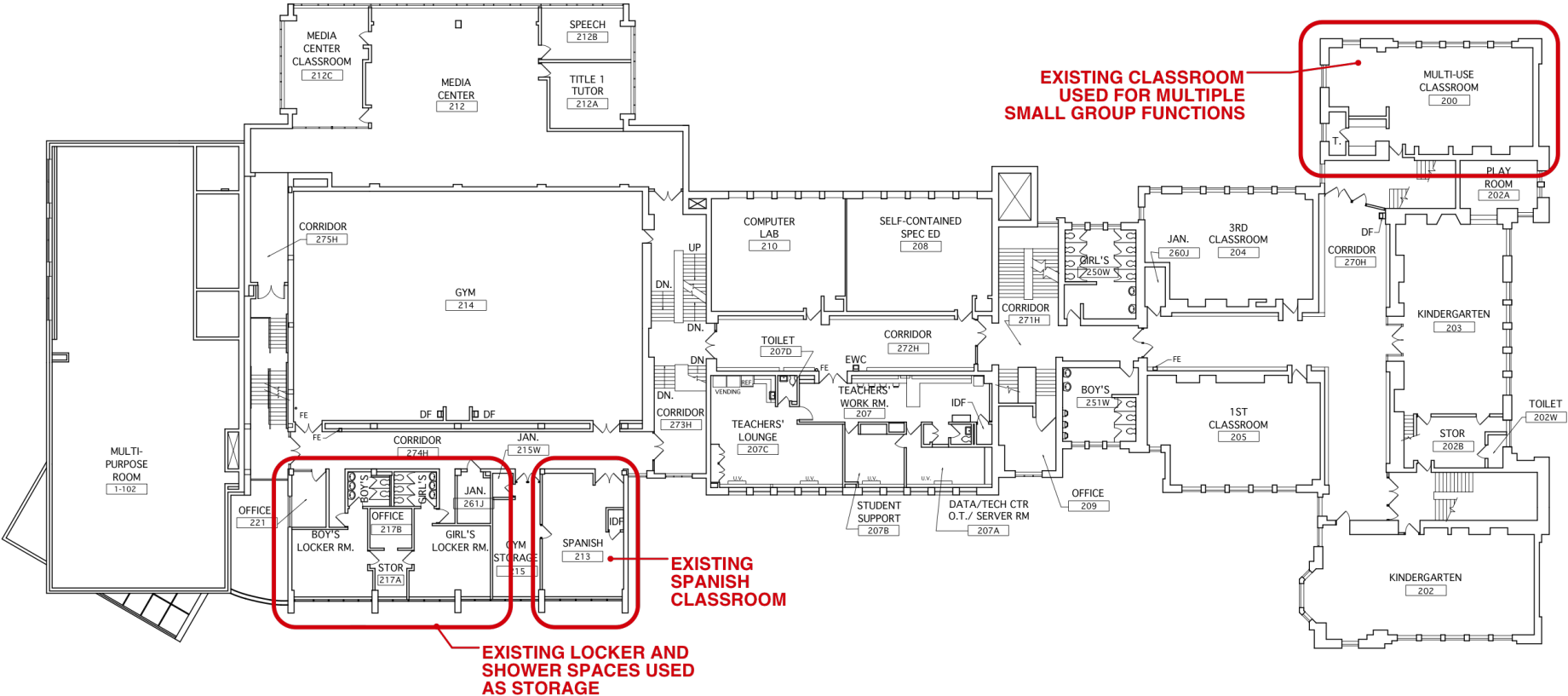
SECOND FLOOR PLAN

NOT TO SCALE



Beye: OPTION 2

STR



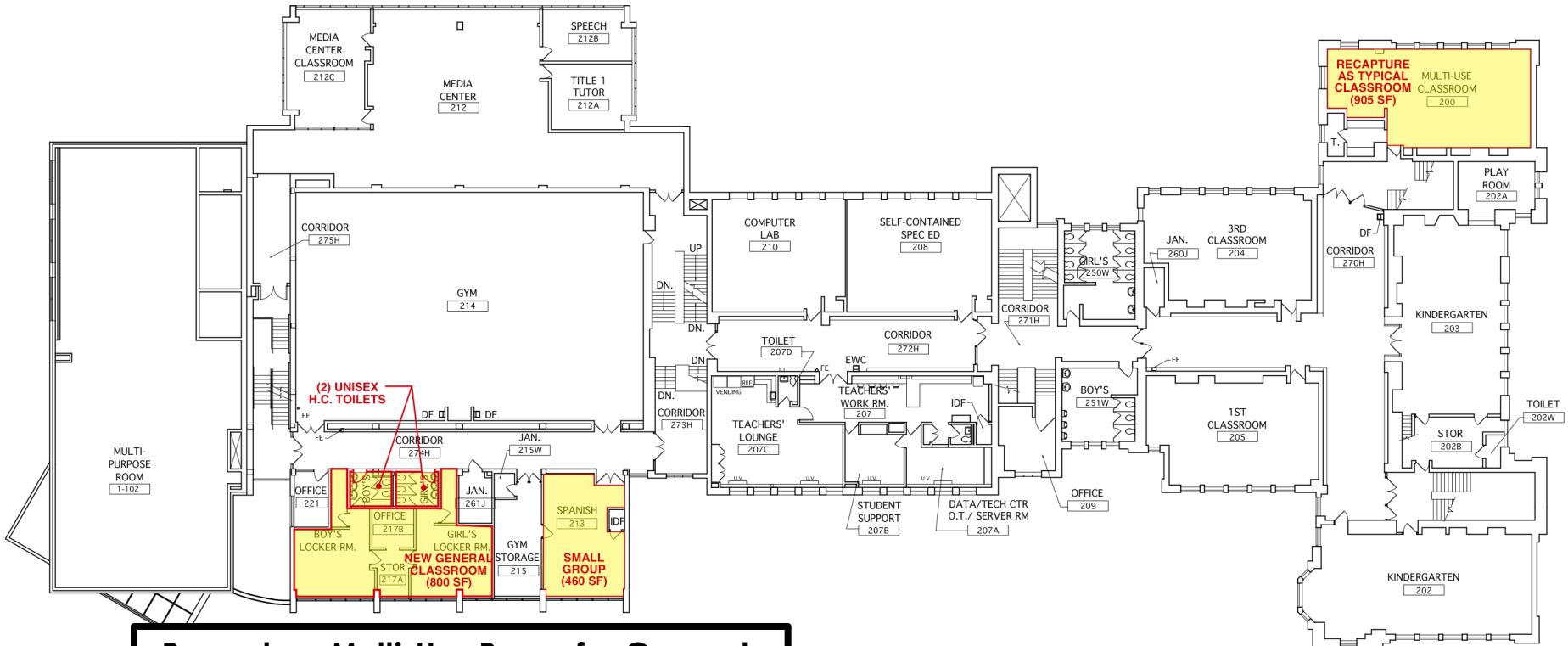
SECOND FLOOR PLAN

NOT TO SCALE



Beye: OPTION 2

STR



•Recapture Multi-Use Room for General Instruction

•Renovate Locker Rooms into Typical Classroom

•Recapture Spanish Room for Small Group Room

•Create (2) HC Toilet Rooms

SECOND FLOOR PLAN

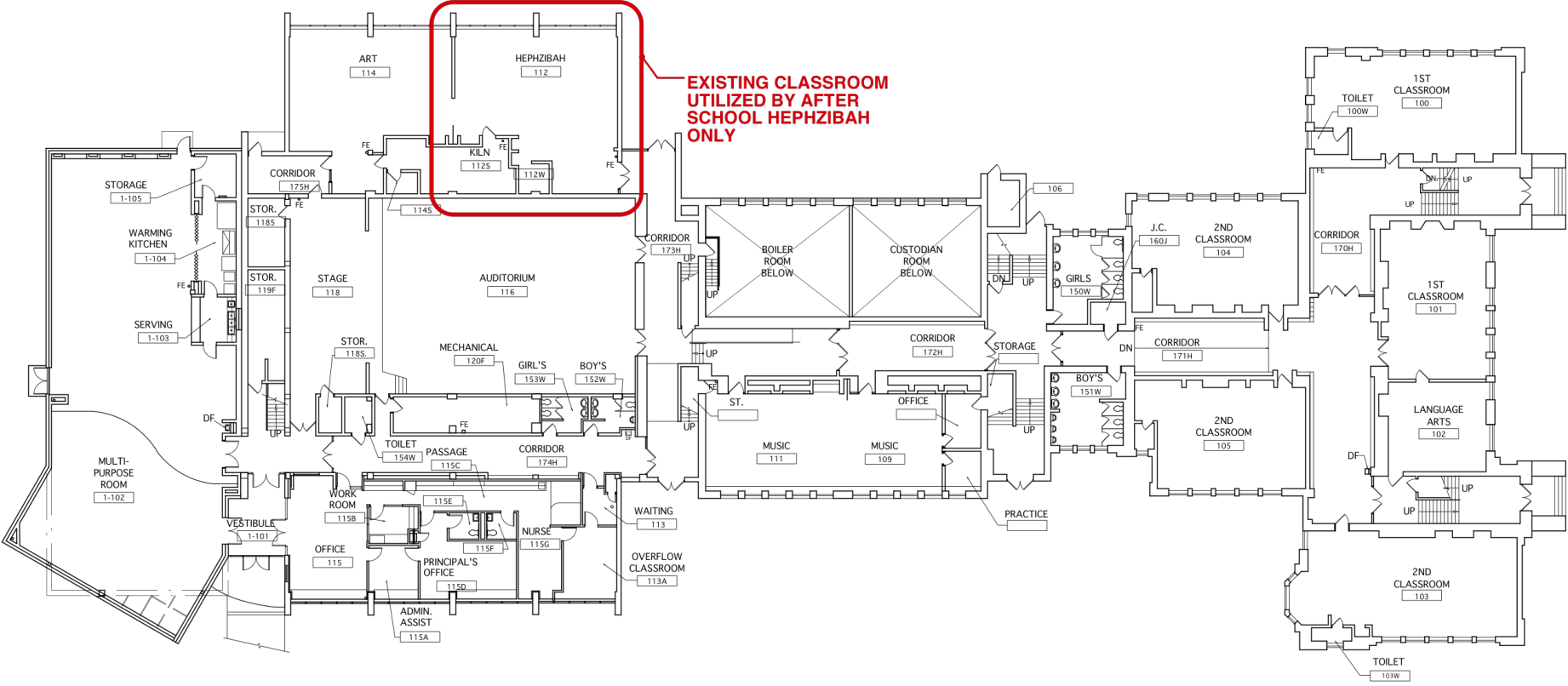
NOT TO SCALE



Gain = 2 New Typ. Classrooms
Loss = Dedicated Spanish Room
1 Small Group location

Beye: OPTION 3

STR



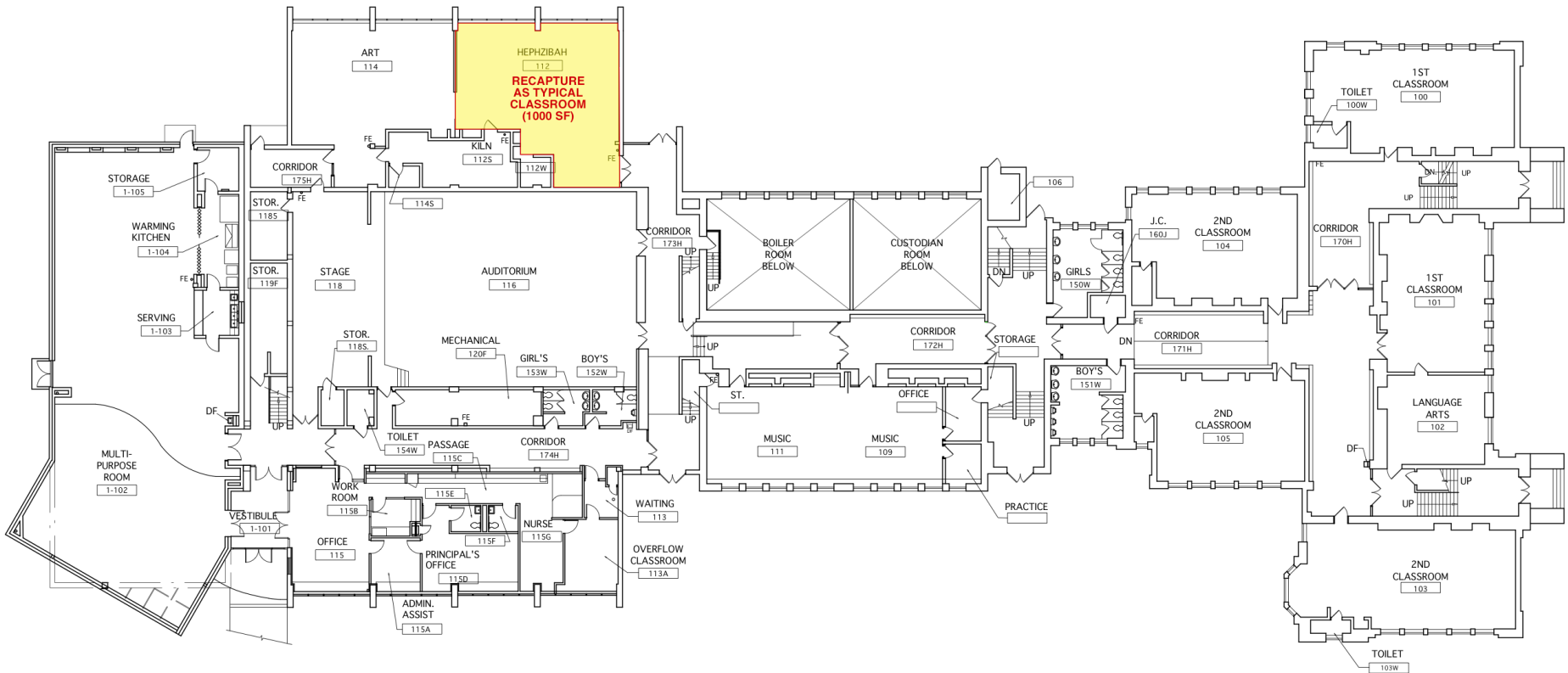
FIRST FLOOR PLAN

NOT TO SCALE



Beye: OPTION 3

STR



**•Recapture Classroom
Dedicated to Hephzibah for
General Instruction**

Gain = 1 New Typ. Classroom

FIRST FLOOR PLAN

NOT TO SCALE



District-led/ Non-Renovation Options

1. Restructure Boundaries
2. Create Grade Level Centers