

Welcome To Our Exemplary Jungle

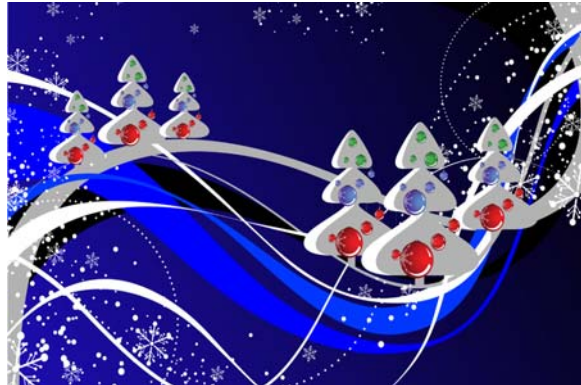
Board Report

Jones Elementary/Intermediate

Date: December 6, 2010

Enrollment:

EE	3
PK	21 + 2
K grade	54 + 2
1st grade	39 + 1
2nd grade	50
3rd grade	40 + 2
4th grade	38 + 1
5 th grade	45 + 2
6 th grade	49
Total	339 + 10



Discipline Report: November

Total number of discipline referrals	14
General misbehavior (talking, swearing, tardy etc.)	11
Skipping	
Fighting	
Possession of tobacco	
Public display of affection	
Off campus violation	
Transportation violation	
Possession of alcohol/drugs (look-a-like)/weapon/ammunition	
Bullying/intimidation	3
Other (cheating)	
Other (stealing)	
Other -	

Schedule of major upcoming events for: December

(parent night, extra-curricular schedules, school programs etc.)

EVENT	DATE
Get Fit Club Meetings	Dec. 7 th and 14 th
Elem./JH UIL Meet	Dec. 11 th
9 Weeks Assessments	Week of Dec. 13 th
Get Fit 5K Run	Dec. 18 th

Christmas Parties	Dec. 21 st
Early Out	Dec. 22 nd
Christmas Holidays	Dec. 23 rd thru Jan. 7 th

Staff development for the month of: November

TEACHER(S)	Training/event attended	CIP	Date
Kimberly Ilse	Bullying Workshop	Safe School	November 2, 2010
Reading Teachers	District Reading Meeting	Reading/Writing	November 4, 2010
Social Studies Teachers	District Social Studies Meeting	Social Studies	November 8, 2010
Science Teachers	District Science Meeting	Science	November 9, 2010
Dept. Heads, TAKS Coord., Adm.	TEPSA STAAR Conference	All Subjects	November 10-12, 2010
Math Teachers	Math District Meeting	Math	November 15, 2010
Christy Price	504 Conference	All Subjects, Special Programs	November 16, 2010

Notable Highlights:

- Veterans Day Program
- Thanksgiving Dinner

Principal's General Narrative:

Results from our first academic benchmarks clearly indicate that our students are progressing satisfactorily and that our faculty and programs are being effective. Benchmarks help guide our instruction as our teachers analyze data and align the curriculum to maximize instruction.

Attendance is closely monitored as it is essential our students are in class to receive instruction. I commend our faculty and staff for stressing the importance of school attendance among our community.

Respectfully,

Alma Gutierrez