

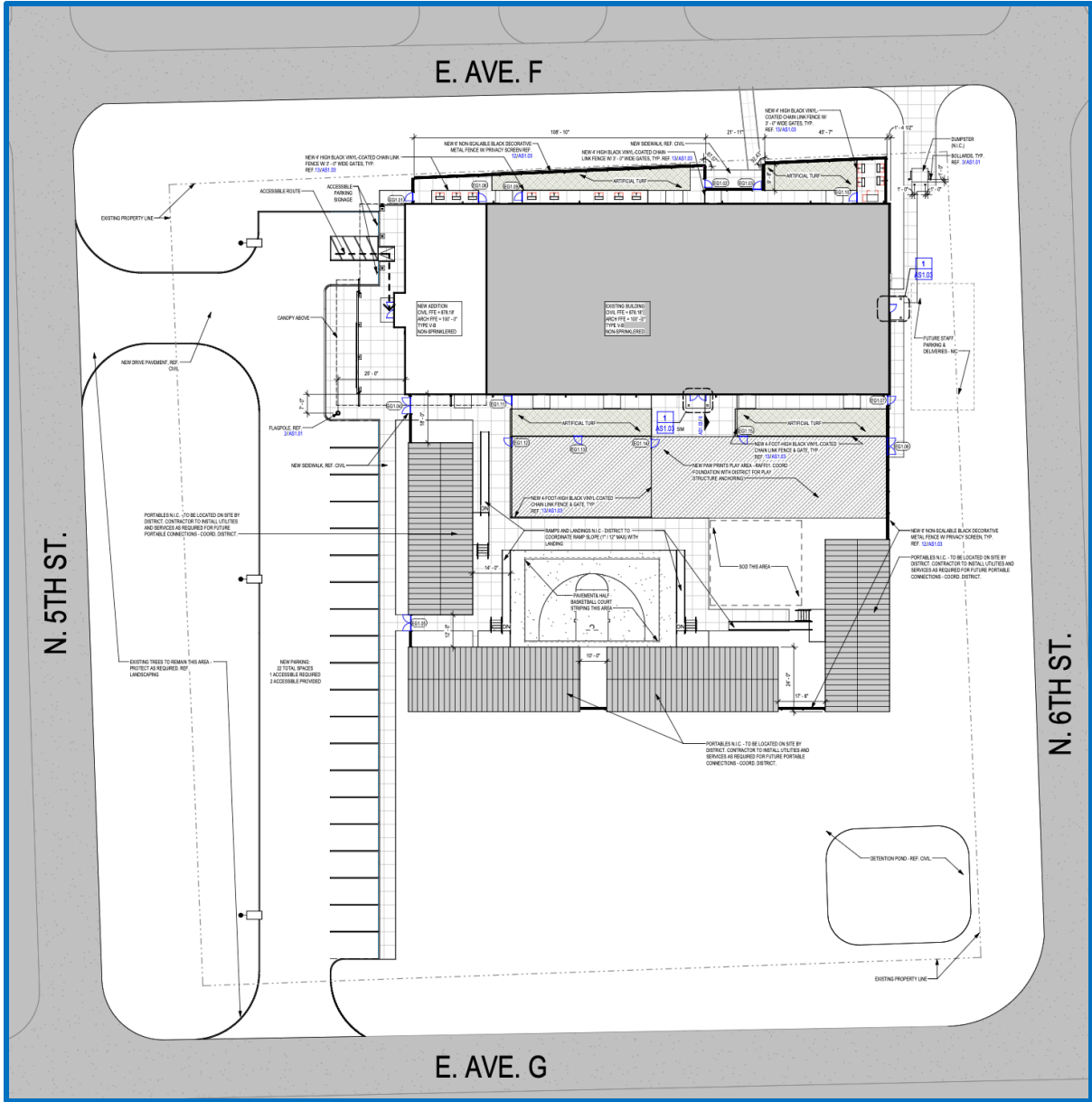
# **Paw Prints, Administration Annex, and Parking Lot Guaranteed Maximum Price**



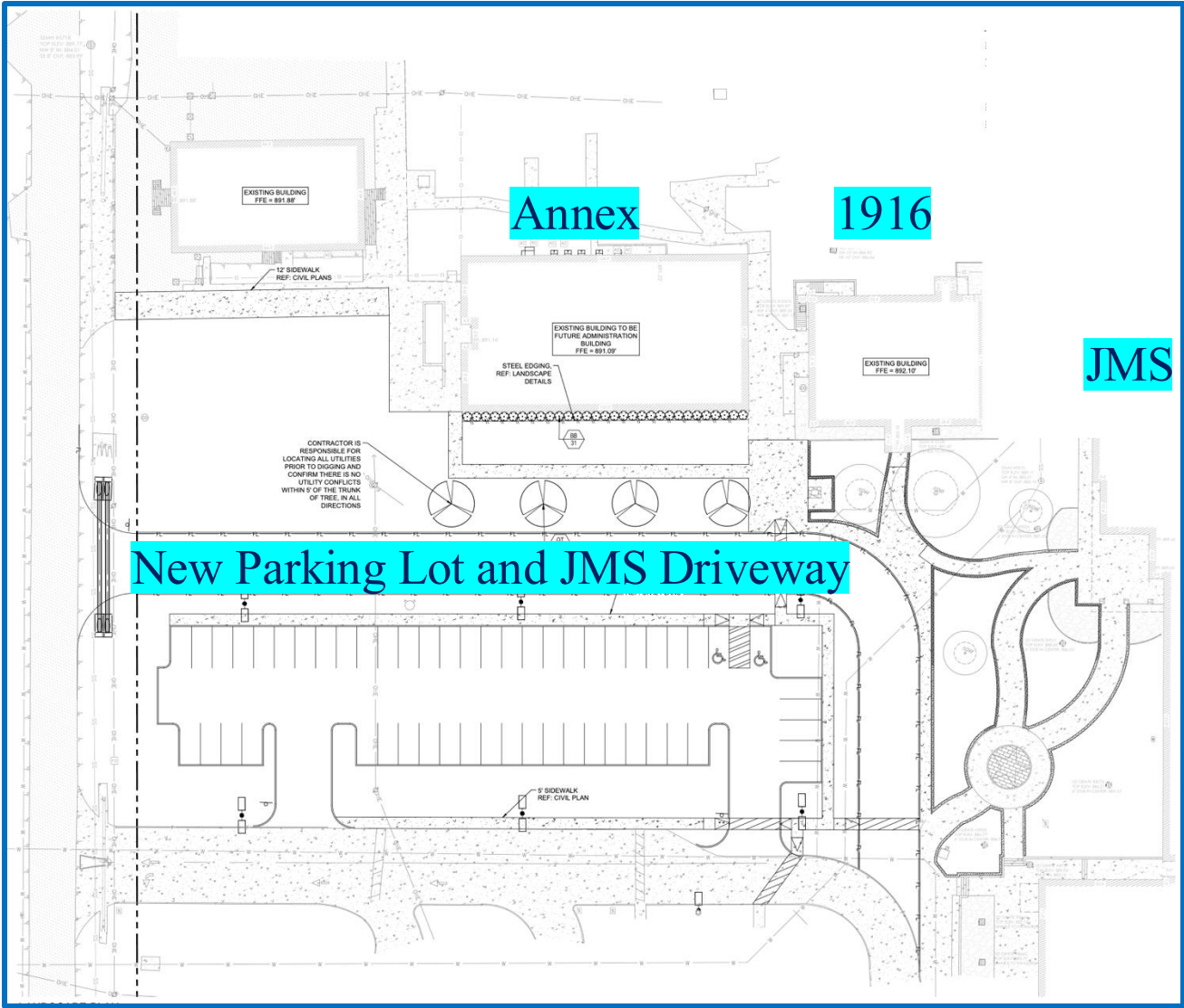
**Stephen Dorman, P.E.**  
**Vice-President, Sledge Engineering**  
Regular Board Meeting  
April 16, 2025

# Site Plans for Paw Prints, Annex, and Parking

## Paw Prints



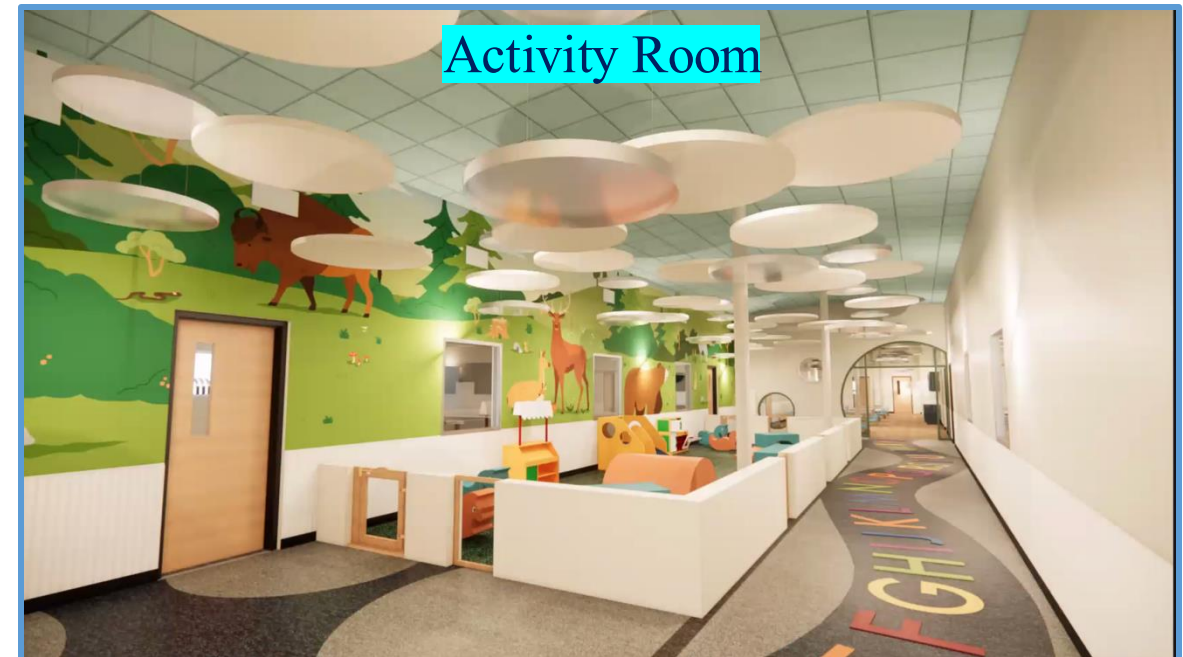
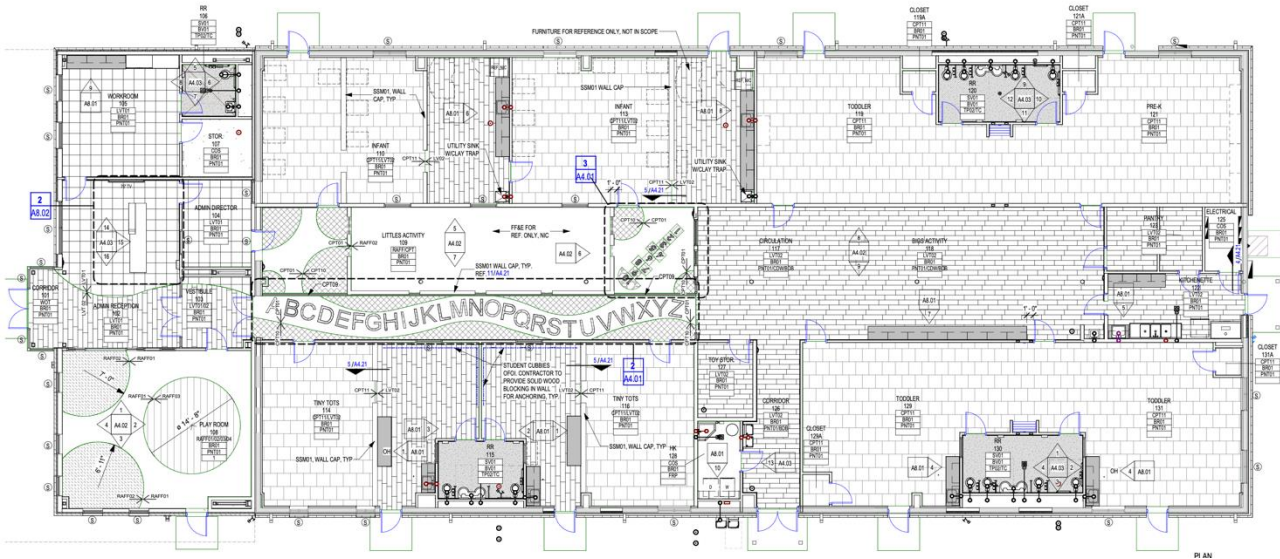
## Admin Annex & Parking Lot Addition





# Renderings and Floorplans – Paw Prints

## Paw Prints – Floorplan - 12,860 SF (Square Feet)

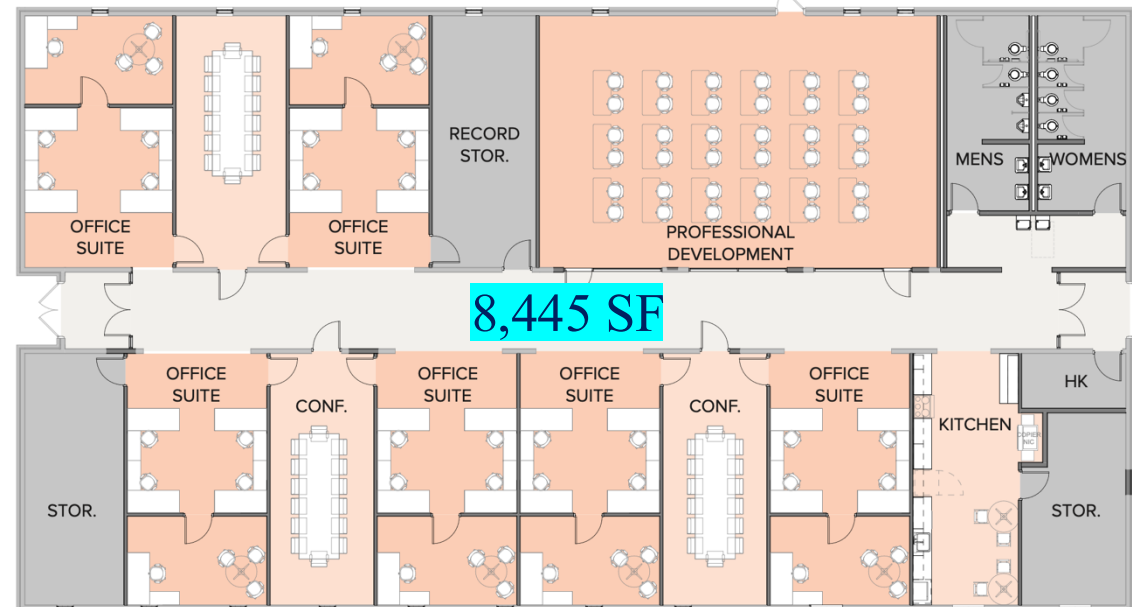


# Renderings and Floorplans - Annex

Admin Annex & Parking Lot – Rendering



Admin Annex & Parking Lot – Floorplan





# Summary of Bid via GMP

*GMP = Guaranteed Maximum Price*

Scope	Bid Price / GMP
Paw Prints	\$5,411,042
Administration Annex	\$1,737,503
Parking Lot & Driveway for 1916 Building, Annex, & JMS	\$1,140,984
<b>Total</b>	<b>\$8,289,529</b>

**Recommend Approval**

**”Not to Exceed” = \$8,400,000**



**Jarrell**  
Independent School District