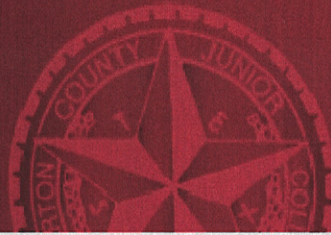




*Wharton County
Junior College*



Monthly Financial Reports

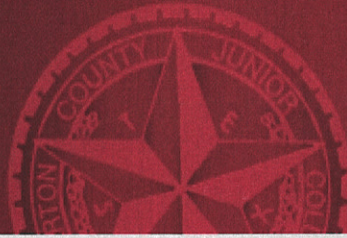
February 2023



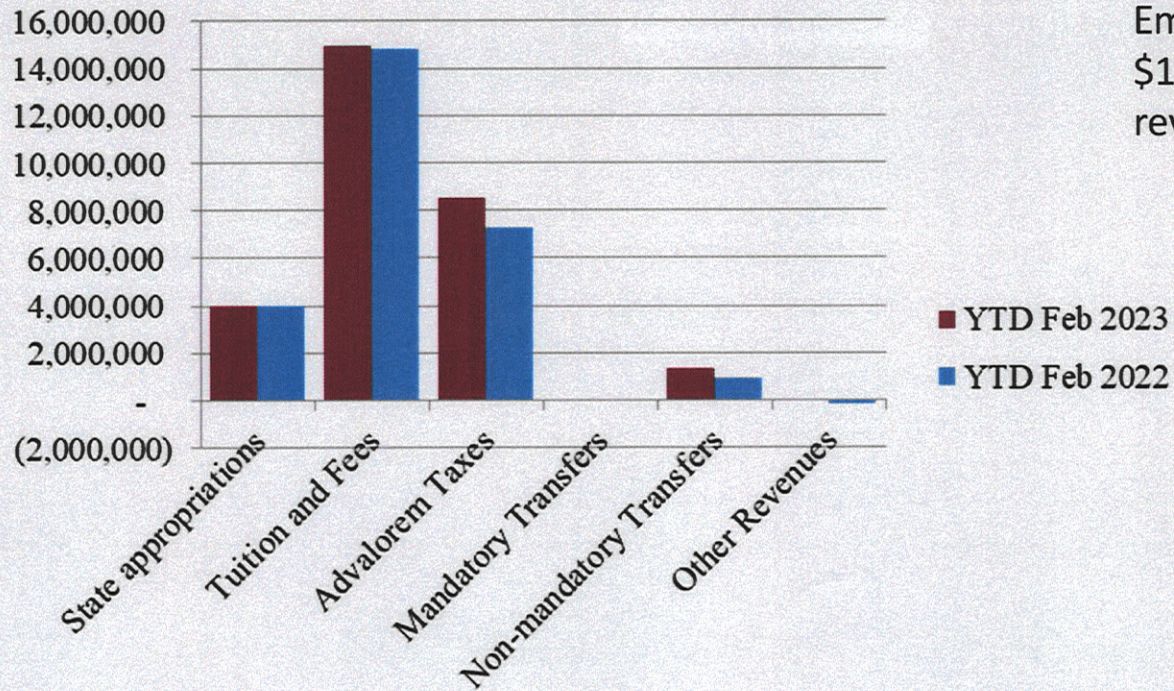
Revenue & Expenditure Summary

	FISCAL 2023				FISCAL 2022			% OF PRIOR YR ACTUAL
	Current Month	Y-T-D ACTUAL	Budget	% of Budget	Y-T-D ACTUAL	Budget	% of Budget	
Fund 1000								
Revenues:								
State appropriations	\$ -	\$ 4,001,261	\$ 9,305,255	43.00%	\$ 4,001,261	\$ 9,305,255	43.00%	100%
Tuition and Fees	45,307	14,988,523	19,071,607	78.59%	14,804,776	19,874,485	74.49%	101%
Advalorem Taxes	904,210	8,503,835	8,756,525	97.11%	7,304,093	7,675,517	95.16%	116%
Mandatory Transfers	-	-	1,350,273	0.00%	-	327,215	0.00%	0%
Non-mandatory Transfers	1,369,620	1,369,620	2,185,483	62.67%	899,769	2,725,596	33.01%	152%
Other Revenues	38,063	73,208	684,968	10.69%	(188,307)	442,053	-42.60%	39%
Total Revenues	2,357,200	28,936,447	41,354,111	69.97%	26,821,591	40,350,121	66.47%	108%
Expenditures:								
Salaries	1,697,038	10,102,315	22,934,708	44.05%	10,539,673	23,212,016	45.41%	96%
Employee Benefits	401,950	2,248,895	6,045,646	37.20%	2,330,676	5,974,322	39.01%	96%
Capital Expenditures	39,422	157,285	903,540	-	19,586	138,016	14.19%	803%
Mandatory Transfers	-	184,509	367,800	50.17%	183,344	367,800	49.85%	101%
Non-mandatory Transfers	-	-	-	-	-	-	-	0%
Other Expenditures	831,457	5,137,208	11,102,417	46.27%	4,826,676	10,657,967	45.29%	106%
Total expenditures	2,969,867	17,830,212	41,354,111	43.12%	17,899,955	40,350,121	44.36%	100%
Net increase/ (decrease) in net assets	\$ (612,667)	\$ 11,106,235			\$ 8,921,636			
Less Outstanding encumbrances		(1,796,235)			(1,502,135)			
Net increase less encumbrances		\$ 9,310,000			\$ 7,419,501			

* Note: Net student receivables in the amount of \$ 1,078,419.26 , are currently outstanding. Tuition and fees are subject to collection in future periods.



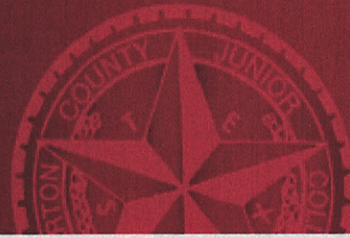
Year to Date Revenues



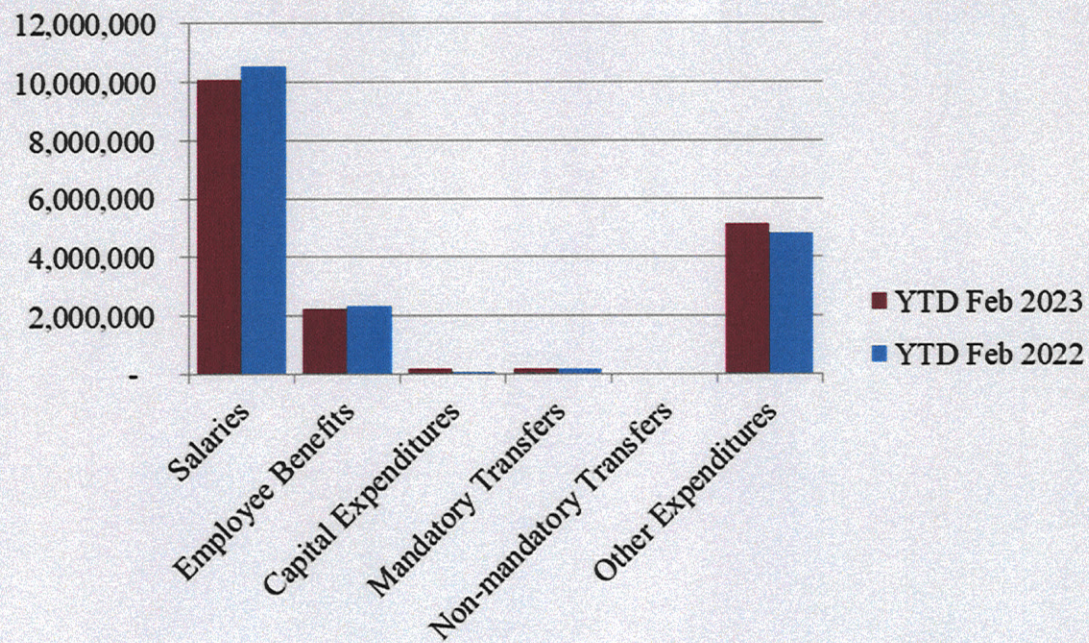
- Non-mandatory transfers: Higher Education Emergency Relief Fund of \$1.370 mm for Fall 22 lost revenue

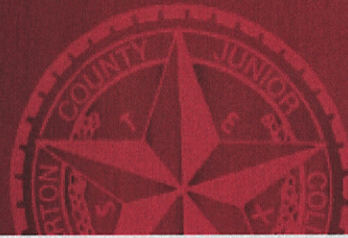


Wharton County
Junior College

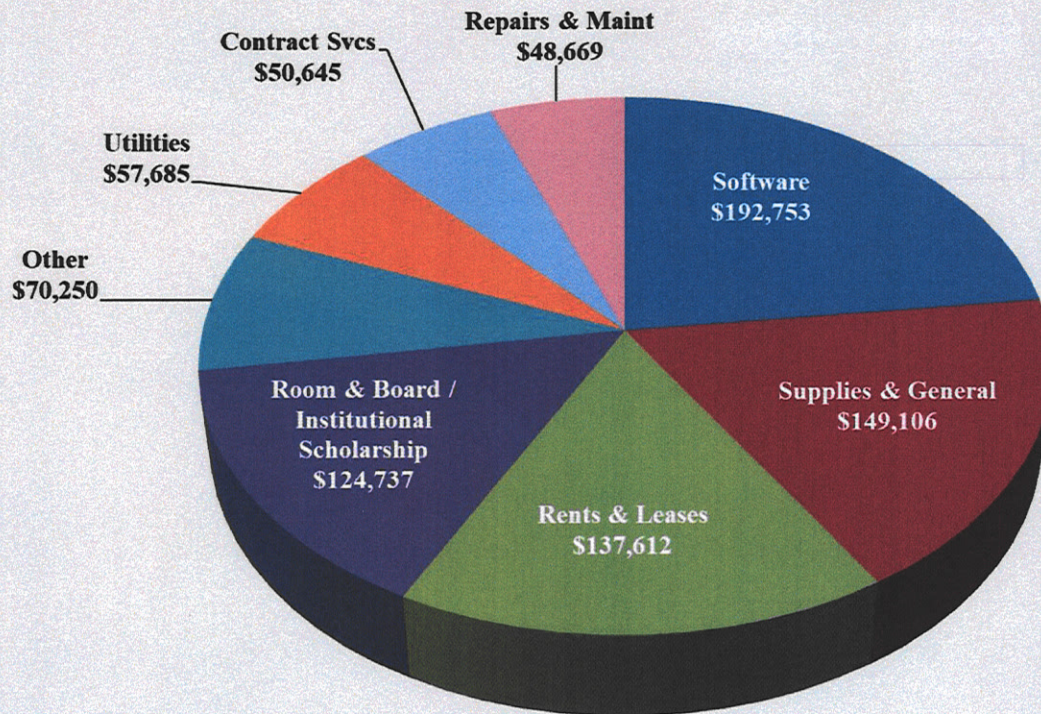


Year to Date Expenses





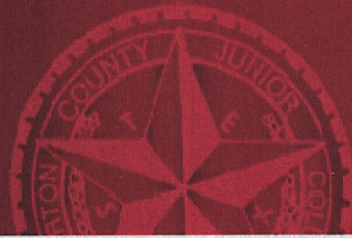
Other Expenses for February



- Software expenditures include \$179k for Banner annual maintenance contract



*Wharton County
Junior College*

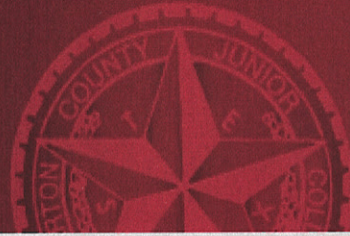


Analysis of Student Receivable Outstanding As of February 28, 2023

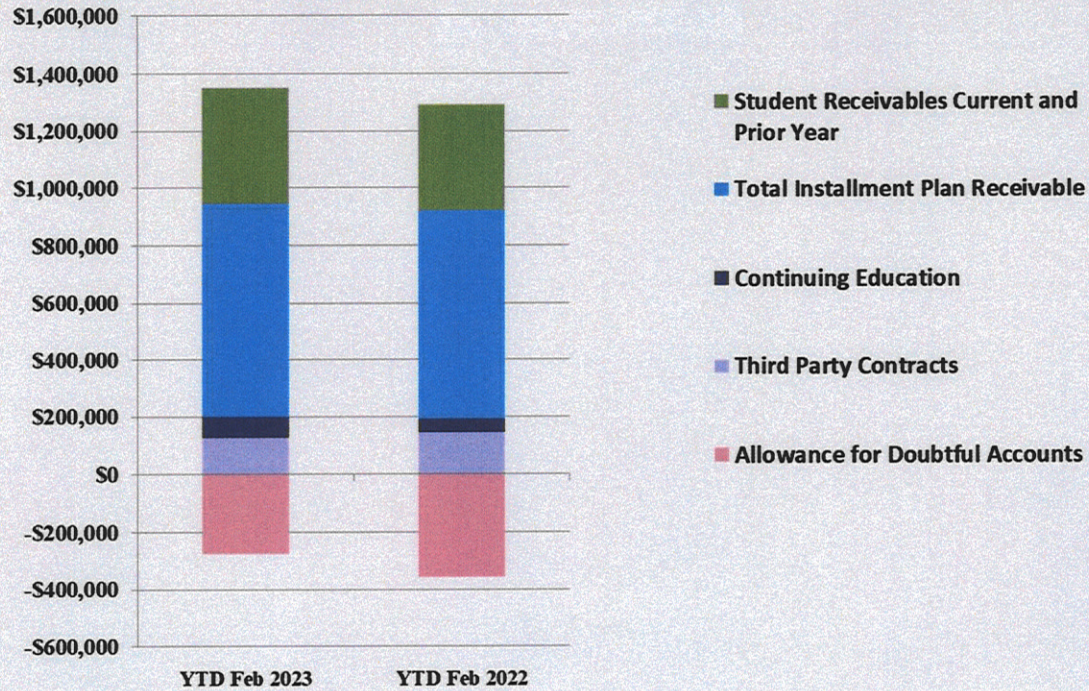
	2023	2022
Student Receivables Current and Prior Yr.	\$ 407,521.14	\$ 371,023.59
Installment Plan Receivable Due Fall Semester	\$ 101,374.54	\$ 45,788.71
Installment Plan Receivable Due Spring Semester	565,226.30	511,524.44
Installment Plan Receivable Summer I & II	0.00	0.00
Installment Plan Receivable Prior Years	76,929.23	171,869.88
Total Installment Plan Receivable	\$ 743,530.07	\$ 729,183.03
Third Party Contracts Receivable	\$ 127,616.67	\$ 144,943.01
Continuing Education Receivable	75,261.00	47,498.00
Allowance for Doubtful Accounts	(275,509.62)	(356,936.51)
Net Accounts Receivable	\$ 1,078,419.26	\$ 935,711.12



Wharton County
Junior College



AR by Category



COMBINED BALANCE SHEET

(Funds included: GOVERNMENTAL FUND TYPES)

Governmental Fund Types

	Auxiliary Enterprise	Current Unrestricted	Restricted Funds	Current Year 2023	Prior Year 2022
ASSETS and OTHER DEBITS:					
ASSETS:					
Cash	92,470	2,170,580	149,432	2,412,482	3,720,734
Cash Investments	874,491	24,561,291	1,113,810	26,549,592	23,187,617
Accounts Receivable	57,902	1,118,533	5,681	1,182,115	1,009,705
Taxes Receivable		501,583	--	501,583	602,841
Local, St & Fed Agency Receivable		--	421,946	421,946	1,395,910
Deposits		--	--	--	4,892
Due From Other Funds		300,000	62,920	362,920	634,776
Prepaid Expense		--	--	--	39,679
Property, Plant & Equipment		--	--	--	--
Deferred Outflows		9,340,694	--	9,340,694	10,285,070
TOTAL ASSETS AND OTHER DEBITS:	1,024,863	37,992,681	1,753,789	40,771,333	40,881,222
Liabilities, equity and other credits					
LIABILITIES:					
Accounts Payable	4,500	99,308	27,259	131,068	210,113
Employee Benefits Payable	615	198,359	--	198,974	229,399
Payroll Taxes Payable		194	--	194	-1,678
Accrued Liabilities		--	--	--	--
Deferred Revenue	1,000	--	502,385	503,385	728,708
Long Term Debt		--	--	--	--
Net Pension Liability		4,103,835	--	4,103,835	9,228,835
Net OPEB Liability		32,567,646	--	32,567,646	32,567,646
Lease Liab - Long Term		--	--	--	--
Deposits Payable	66,352	11,878	--	78,230	74,063
Due To Other Funds		62,920	300,000	362,920	634,776
Scholarships-Designated Donations		--	2,349	2,349	44,062
Scholarships-Non-designated		--	598,866	598,866	392,420
Donatio		--	--	--	--
Deferred Inflows		9,710,668	--	9,710,668	6,185,814
TOTAL LIABILITIES:	72,467	46,754,809	1,430,859	48,258,135	50,294,158
EQUITY AND OTHER CREDITS:					
Control Accounts		--	--	--	--
Fund Balances		--	--	--	--
Prior Year Fund Balance		-19,313,888	--	-19,313,888	-19,412,977
Endowment Fund-Original		--	--	--	--
Endowment Fund-Income		--	--	--	--

Governmental Fund Types

	Auxiliary Enterprise	Current Unrestricted	Restricted Funds	Current Year 2023	Prior Year 2022
EQUITY AND OTHER CREDITS:					
FB Professional Development		--	--		
FB Salary Equity		--	--		
FB Capital Equipment		--	--		
FB Investment Gain And Loss		--	--		
Fund Balance Receivables		-	--	-	-
Reserved-Undesignated		--	--		
FBTC Operating Fund Balance		--	--		
Plant Fund Balance		--	--		
Bond Fund Balance		--	--		
Scholarship		--	--		
Fund Balance-Rounding Diff		--	-	-	-
Fund Balances:					
Reserve for Encumbrance	27,041	1,796,235	541,678	2,364,954	3,138,043
Fund Balance	925,355	8,755,525	-218,748	9,462,132	6,861,999
Reserve For Operations		--	--		
TOTAL EQUITY AND OTHER CREDITS:	952,396	-8,762,129	322,930	-7,486,803	-9,412,936
TOTAL LIABILITIES, EQUITY AND OTHER CREDITS:	1,024,863	37,992,681	1,753,789	40,771,333	40,881,222

Wharton County Junior College
 Combined Balance Sheet--All Fund Types and Account Groups
 28-FEB-2023
 (With comparative totals for 28-FEB-2022)
 (amounts expressed in dollars)

Proprietary Fund Types

	Agency Funds	Current Year 2023	Prior Year 2022
ASSETS and OTHER DEBITS:			
ASSETS:			
Cash	81,550	81,550	191,756
Cash Investments	162,700	162,700	59,126
Accounts Receivable	-	-	-
Taxes Receivable			
Local, St & Fed Agency Receivable			
Deposits			
Due From Other Funds			
Prepaid Expense			
Property, Plant & Equipment			
Deferred Outflows			
TOTAL ASSETS AND OTHER DEBITS:	244,250	244,250	250,882
Liabilities, equity and other credits			
LIABILITIES:			
Accounts Payable			
Employee Benefits Payable	-	-	-
Payroll Taxes Payable			
Accrued Liabilities			
Deferred Revenue			
Long Term Debt			
Net Pension Liability			
Net OPEB Liability			
Lease Liab - Long Term			
Deposits Payable	241,230	241,230	250,671
Due To Other Funds			
Scholarships-Designated Donations			
Scholarships-Non-designated			
Donatio			
Deferred Inflows			
TOTAL LIABILITIES:	241,230	241,230	250,671
EQUITY AND OTHER CREDITS:			
Control Accounts	3,021	3,021	211
Fund Balances			
Prior Year Fund Balance			
Endowment Fund-Original			
Endowment Fund-Income			

Proprietary Fund Types

Agency Funds	Current Year 2023	Prior Year 2022
<hr/>		
EQUITY AND OTHER CREDITS:		
FB Professional Development		
FB Salary Equity		
FB Capital Equipment		
FB Investment Gain And Loss		
Fund Balance Receivables		
Reserved-Undesignated		
FBTC Operating Fund Balance		
Plant Fund Balance		
Bond Fund Balance		
Scholarship		
Fund Balance-Rounding Diff		
Fund Balances:		
Reserve for Encumbrance		
Fund Balance		
Reserve For Operations		
TOTAL EQUITY AND OTHER CREDITS:	3,021	211
<hr/>		
TOTAL LIABILITIES,	244,250	250,882
EQUITY AND OTHER CREDITS:	244,250	250,882
<hr/>		
=====		

Fiduciary Fund Types

	Endowment Funds	Quasi Endowment Fund	Current Year 2023	Prior Year 2022
ASSETS and OTHER DEBITS:				
ASSETS:				
Cash	240,818	--	240,818	822,466
Cash Investments	12,205,430	--	12,205,430	12,568,034
Accounts Receivable	12,510	--	12,510	24,881
Taxes Receivable	--	--	--	--
Local, St & Fed Agency Receivable	--	--	--	--
Deposits	--	--	--	--
Due From Other Funds	--	--	--	--
Prepaid Expense	--	--	--	--
Property, Plant & Equipment	--	--	--	--
Deferred Outflows	--	--	--	--
TOTAL ASSETS AND OTHER DEBITS:	12,458,758		12,458,758	13,415,382
Liabilities, equity and other credits				
LIABILITIES:				
Accounts Payable	--	--	--	--
Employee Benefits Payable	--	--	--	--
Payroll Taxes Payable	--	--	--	--
Accrued Liabilities	--	--	--	--
Deferred Revenue	--	--	--	--
Long Term Debt	--	--	--	--
Net Pension Liability	--	--	--	--
Net OPEB Liability	--	--	--	--
Lease Liab - Long Term	--	--	--	--
Deposits Payable	--	--	--	--
Due To Other Funds	--	--	--	--
Scholarships-Designated Donations	--	--	--	--
Scholarships-Non-designated	--	--	--	--
Donatio	--	--	--	--
Deferred Inflows	--	--	--	--
TOTAL LIABILITIES:				
EQUITY AND OTHER CREDITS:				
Control Accounts	--	--	--	--
Fund Balances	--	--	--	--
Prior Year Fund Balance	--	--	--	--
Endowment Fund-Original	--	--	--	--
Endowment Fund-Income	--	--	--	--

Wharton County Junior College
 Combined Balance Sheet--All Fund Types and Account Groups
 28-FEB-2023
 (With comparative totals for 28-FEB-2022)
 (amounts expressed in dollars)

Fiduciary Fund Types

	Endowment Funds	Quasi Endowment Fund	Current Year 2023	Prior Year 2022
EQUITY AND OTHER CREDITS:				
FB Professional Development		--		
FB Salary Equity		--		
FB Capital Equipment		--		
FB Investment Gain And Loss		--		
Fund Balance Receivables		--		
Reserved-Undesignated		--		
FBTC Operating Fund Balance		--		
Plant Fund Balance		--		
Bond Fund Balance		--		
Scholarship		--		
Fund Balance-Rounding Diff		--		
Fund Balances:				
Reserve for Encumbrance		--		
Fund Balance	12,458,758	--	12,458,758	13,415,382
Reserve For Operations		--		
TOTAL EQUITY AND OTHER CREDITS:	12,458,758		12,458,758	13,415,382
TOTAL LIABILITIES,	12,458,758		12,458,758	13,415,382
EQUITY AND OTHER CREDITS:				

Account Groups						
	Debt Retirement Bond Fund	Investment in Plant Fund	Unexpended Plant Fund	Repair and Replacement	Current Year 2023	Prior Year 2022
ASSETS and OTHER DEBITS:						
ASSETS:						
Cash	177,784	--	-7,413,564	7,467,274	231,494	480,101
Cash Investments	393,647	--	9,033,652	--	9,427,300	9,624,286
Accounts Receivable	--	--	23,529	--	23,529	12,738
Taxes Receivable	--	--	--	--	--	--
Local, St & Fed Agency Receivable	--	--	--	--	--	--
Deposits	--	--	--	--	--	--
Due From Other Funds	--	--	--	--	--	--
Prepaid Expense	--	--	--	--	--	--
Property, Plant & Equipment	--	46,515,765	--	--	46,515,765	46,614,441
Deferred Outflows	--	--	--	--	--	--
TOTAL ASSETS AND OTHER DEBITS:	571,432	46,515,765	1,643,617	7,467,274	56,198,088	56,731,566
Liabilities, equity and other credits						
LIABILITIES:						
Accounts Payable	--	--	--	--	--	--
Employee Benefits Payable	--	--	--	--	--	--
Payroll Taxes Payable	--	--	--	--	--	--
Accrued Liabilities	--	1,339,512	--	--	1,339,512	1,351,645
Deferred Revenue	--	--	--	--	--	--
Long Term Debt	--	365,584	--	--	365,584	716,168
Net Pension Liability	--	--	--	--	--	--
Net OPEB Liability	--	--	--	--	--	--
Lease Liab - Long Term	--	8,988,334	--	--	8,988,334	8,988,334
Deposits Payable	--	--	--	--	--	--
Due To Other Funds	--	--	--	--	--	--
Scholarships-Designated Donations	--	--	--	--	--	--
Scholarships-Non-designated	--	--	--	--	--	--
Donatio	--	--	--	--	--	--
Deferred Inflows	--	--	--	--	--	--
TOTAL LIABILITIES:		10,693,430			10,693,430	11,056,147
EQUITY AND OTHER CREDITS:						
Control Accounts	--	--	--	--	--	--
Fund Balances	--	--	--	--	--	--
Prior Year Fund Balance	--	--	--	--	--	--
Endowment Fund-Original	--	--	--	--	--	--
Endowment Fund-Income	--	--	--	--	--	--

Account Groups

	Debt Retirement Bond Fund	Investment in Plant Fund	Unexpended Plant Fund	Repair and Replacement	Current Year 2023	Prior Year 2022
EQUITY AND OTHER CREDITS:						
FB Professional Development		--	--	--		
FB Salary Equity		--	--	--		
FB Capital Equipment		37,451,486	--	--	37,451,486	35,947,754
FB Investment Gain And Loss		--	--	--		
Fund Balance Receivables		--	--	--		
Reserved-Undesignated		--	--	--		
FBTC Operating Fund Balance		--	--	--		
Plant Fund Balance		--	--	--		
Bond Fund Balance		--	--	--		
Scholarship		--	--	--		
Fund Balance-Rounding Diff		--	--	--		
Fund Balances:						
Reserve for Encumbrance		--	19,574	--	19,574	
Fund Balance	571,432	118,320	560,790	6,783,057	8,033,598	9,727,665
Reserve For Operations		--	--	--		
TOTAL EQUITY AND OTHER CREDITS:	571,432	37,569,805	580,364	6,783,057	45,504,658	45,675,419
TOTAL LIABILITIES,	571,432	48,263,235	580,364	6,783,057	56,198,088	56,731,566
EQUITY AND OTHER CREDITS:						

Memorandum Only

	Current Year 2023	Prior Year 2022
ASSETS and OTHER DEBITS:		
ASSETS:		
Cash	2,966,344	5,215,057
Cash Investments	48,345,023	45,439,064
Accounts Receivable	1,218,154	1,047,324
Taxes Receivable	501,583	602,841
Local, St & Fed Agency Receivable	421,946	1,395,910
Deposits		4,892
Due From Other Funds	362,920	634,776
Prepaid Expense		39,679
Property, Plant & Equipment	46,515,765	46,614,441
Deferred Outflows	9,340,694	10,285,070
TOTAL ASSETS AND OTHER DEBITS:	109,672,429	111,279,052
Liabilities, equity and other credits		
LIABILITIES:		
Accounts Payable	131,068	210,113
Employee Benefits Payable	198,974	229,399
Payroll Taxes Payable	194	-1,678
Accrued Liabilities	1,339,512	1,351,645
Deferred Revenue	503,385	728,708
Long Term Debt	365,584	716,168
Net Pension Liability	4,103,835	9,228,835
Net OPEB Liability	32,567,646	32,567,646
Lease Liab - Long Term	8,988,334	8,988,334
Deposits Payable	319,460	324,734
Due To Other Funds	362,920	634,776
Scholarships-Designated Donations	2,349	44,062
Scholarships-Non-designated	598,866	392,420
Donatio		
Deferred Inflows	9,710,668	6,185,814
TOTAL LIABILITIES:	59,192,795	61,600,976
EQUITY AND OTHER CREDITS:		
Control Accounts	3,021	211
Fund Balances		
Prior Year Fund Balance	-19,313,888	-19,412,977
Endowment Fund-Original		
Endowment Fund-Income		
FB Professional Development		
FB Salary Equity		
FB Capital Equipment	37,451,486	35,947,754
FB Investment Gain And Loss		

Memorandum Only

	Current Year 2023	Prior Year 2022
Fund Balance Receivables	-	-
Reserved-Undesignated		
FBTC Operating Fund Balance		
Plant Fund Balance		
Bond Fund Balance		
Scholarship		
Fund Balance-Rounding Diff	-	-
Fund Balances:		
Reserve for Encumbrance	2,384,528	3,138,043
Fund Balance	29,954,488	30,005,046
Reserve For Operations		
TOTAL EQUITY AND OTHER CREDITS:	50,479,634	49,678,076
TOTAL LIABILITIES, EQUITY AND OTHER CREDITS:	109,672,429	111,279,052