

CHANGE ORDER NO. 14

PROJECT:	<u>Horizon City Municipal Facilities Phase I</u>	DATE OF ISSUANCE:	January 27, 2026
OWNER:	TOWN OF HORIZON CITY 14999 Darrington Rd. Horizon City, Texas 79928	EFFECTIVE DATE:	January 27, 2026
CONTRACTOR:	<u>Dantex General Contractors</u> <u>4727 Osborne</u> El Paso, TX 79922	ARCHITECT:	Eugenio Mesta, AIA Exigo Architects 211 N. Florence Ste. A El Paso, Tx 79912
CONTRACT FOR:	<i>New Municipal Facilities for the City of Horizon</i>	OWNER'S BID NO.	CSP 23-038 Project No. 2.513D
		ARCHITECT'S PROJECT NO:	20201600

YOU ARE DIRECTED TO MAKE THE FOLLOWING CHANGE TO THE CONTRACT DOCUMENTS:Item No. 1: **Additional Power and Data Drops** - (\$18,260.90; 30 days impact to contract time)**PURPOSE OF CHANGE ORDER:**

Item No. 1. The Contractor has proposed additional cost associated with the installation of additional power and data drops as per ASI #07. The new power and data drops will be recessed in CMU as recommended by the Architect at 3 locations, and in metal stud walls using flex conduit and cut in boxes. Proposal includes all materials, labor and equipment to saw cut existing walls as applicable, demo patch and re-paint. See attached.

CHANGE ORDER NO. <u>14</u>	
PROJECT: <i>Horizon City Municipal Facilities Phase I</i>	
<p style="text-align: center;">CHANGE IN CONTRACT PRICE:</p> <p>ORIGINAL PRICE:</p> <p style="text-align: right;">\$ 9,070,442.00</p>	<p style="text-align: center;">CHANGE IN CONTRACT TIME</p> <p>ORIGINAL CONTRACT TIME</p> <p>MILESTONES: CONTRACT TIME: <i>Substantial Completion: 455 Days Due Date: November 9, 2025</i> <i>Final Completion: 485 Days Due Date: December 9, 2025</i></p>
<p>CONTRACT PRICE PRIOR TO THIS CHANGE ORDER</p> <p style="text-align: right;">\$ 9,280,238.14</p>	<p>CONTRACT TIME PRIOR TO THIS CHANGE ORDER</p> <p>MILESTONES: CONTRACT TIME: <i>Substantial Completion: 490 Days Due Date: December 14, 2025</i> <i>Final Completion: 520 Days Due Date: January 13, 2026</i></p>
<p>NET INCREASE/DECREASE OF THIS CHANGE ORDER</p> <p style="text-align: right;">\$ 18,260.90</p>	<p>NET INCREASE/DECREASE OF THIS CHANGE ORDER</p> <p>MILESTONES: CONTRACT TIME: <i>Substantial Completion: 30 Days</i> <i>Final Completion: 30 Days</i></p>
<p>CONTRACT PRICE WITH ALL APPROVED CHANGE ORDERS</p> <p style="text-align: right;">\$ 9,298,499.04</p>	<p>CONTRACT TIME WITH ALL APPROVED CHANGE ORDERS</p> <p>MILESTONES: CONTRACT TIME: <i>Substantial Completion: 520 Days Due Date: January 13, 2026</i> <i>Final Completion: 550 Days Due Date: February 12, 2026</i></p>

This amount indicated above shall be considered full and equitable adjustment for any claims, past and future, for the work described and shall include all costs, direct and indirect, including extended overhead.

ACCEPTED:

By *Hector Olave* **Hector Olave, PM**
Contractor: Dantex General Contractors

Date 1/27/2026

RECOMMENDED:

By *Jesus Ortega*
Exigo: Jesus Ortega PM

Date 1/29/26

REVIEWED:

By _____
Eduardo Garcia, - Interim Director of Planning

Date _____

APPROVED:

By _____
Andres Renteria, Mayor

Date _____

ARCHITECT’S COST SUMMARY AND CLASSIFICATION OF SOURCE OF CHANGE

Design Architect : Eugenio Mesta, AIA, Exigo Architects
 Change Order #: 14
 Project: Horizon City Municipal Facilities – Phase I
 Contractor: Dantex General Contractors
 Owner Bid No.: CSP 23-038 Project No. 22.513D
 Total Impact to Cost: \$ 18,260.90
 Total Impact to Time: 30 Days
 Date: 1/27/2026

Item No. 1	Antenna Relocation Foundation
<i>Classification</i>	New power and data drops
<i>Impact to Cost</i>	\$ 18,260.90
<i>Impact to Time</i>	30 Days
<i>Justification</i>	See Change Order Narrative for Item No. 1
<i>Cost Summary</i>	New Additional Power and Data Drops

Item No. 2	
<i>Classification</i>	
<i>Impact to Cost</i>	
<i>Impact to Time</i>	
<i>Justification</i>	
<i>Cost Summary</i>	

Item No. 3	
<i>Classification</i>	
<i>Impact to Cost</i>	
<i>Impact to Time</i>	
<i>Justification</i>	
<i>Cost Summary</i>	

Item No. 4	
<i>Classification</i>	
<i>Impact to Cost</i>	
<i>Impact to Time</i>	
<i>Justification</i>	
<i>Cost Summary</i>	

Item No. 5	
<i>Classification</i>	
<i>Impact to Cost</i>	
<i>Impact to Time</i>	
<i>Justification</i>	
<i>Cost Summary</i>	

Item No. 6	
<i>Classification</i>	
<i>Impact to Cost</i>	
<i>Impact to Time</i>	
<i>Justification</i>	
<i>Cost Summary</i>	

Item	Description	Unit Measure	Unit Cost	Quantity	Material	Labor	Net Amount
001	Additional power and data outlets as requested in ASI#007 Installation in Intox Room #41 to be surface Mounted, flex conduit and cut-in boxes in wall	lot	1		\$ -	\$ -	\$12,343.71
002	If conduit required to be recessed in Intox Room #41, need to Add saw cut, demo, patch and re-paint	1	\$1,100.00	3			\$3,300.00
					subtotal		\$15,643.71
004	General Liability	LS	0.2800%	1			\$43.80
005	Builders Risk	LS	0.4500%	1			\$70.40
006	P & P Bond	LS	1.0000%	1			\$156.44
					Subtotal		\$270.64
	Description				Percent		Amount
	Overhead & Profit				15%		\$2,346.56
	Sales Tax				N/A		
					Total Cost		\$18,260.90

Project
Horizon City Municipi...

Item	Description	Qty	Rate	Amount	MARKUP	Total
	ASI 007 New Power & Data request					
Electrical	20A Duplex Receptacles w/Cover	7	22.00	154.00		154.00
Electrical	4square Box	15	6.00	90.00		90.00
Electrical	Erico 512 T-Bar Bx Hgr	4	18.95	75.80		75.80
Electrical	20A, 1P C.B.	1	28.00	28.00		28.00
Electrical	60A, 1P C.B.	2	35.00	70.00		70.00
Electrical	1/2" conduit w/term	150	1.80	270.00		270.00
Electrical	1" emt conduit w/term	225	2.75	618.75		618.75
Electrical	#6	600	1.25	750.00		750.00
Electrical	#12 wire	450	0.90	405.00		405.00
Electrical	Journeyman Electrician	100	45.00	4,500.00	20.00%	5,400.00
Electrical	Helper Labor	100	28.00	2,800.00	20.00%	3,360.00
Electrical	OH & Profit @ 10%	1	1,122.16	1,122.16		1,122.16
				Total		\$12,343.71

The Contract is changed as follows:

Provide additional services, supply and install as needed
 Saw cut concrete openings in ceramic tile to allow for new electrical cut in box (by others)
 Includes lay out and clean up

Saw cut CMU fill wall as indicated by Dantex to allow for recessed conduit for new electrical and data drops		
Cut in CMU, patch and paint Up to 8' of cut, 2 sides, chisel cut up to 4" in depth or rebar is found patch after conduit bis in place and paint to match 3 locations, \$1000.00 each		\$ 3,000.00
10% OH & P		\$ 300.00
TOTAL:.....		\$ 3,300.00

Dantex General Contractors

CHANGE ORDER REQUEST
DRAFT NO. 18

4727 Osborne
El Paso, Texas 79922

Phone: (915) 584-9300
Fax: (915) 833-0253

TITLE: Additional Power and Data Drops per ASI #07

DATE: 1/09/26

PROJECT: Horizon Municipal Facilities Phase 1, PO #008625

DX JOB: 1322

TO: EXIGO
211 N. Florance, Suite 204
El Paso, Texas 79901
Phone: (915) 533-0323

DESCRIPTION OF PROPOSAL:

Provide additional power and data drops as per request in ASI #07

New power and data drop to be: recessed into CMU wall at 3 locations, at metal stud walls, flex conduit and cut in boxes will be used.

We are requesting additional 30 days to be added to the contract time to allow work and installation of the requested work included in ASI 007.

Item	Description	Unit Measure	Unit Cost	Quantity	Material	Labor	Net Amount
001	Additional power and data outlets as requested in ASI#007 Installation in Intox Room #41 to be surface Mounted, flex conduit and cut-in boxes in wall	lot	1		\$ -	\$ -	\$12,343.71
002	If conduit required to be recessed in Intox Room #41, need to Add saw cut, demo, patch and re-paint	1	\$1,100.00	3			\$3,300.00
					subtotal		\$15,643.71
004	General Liability	LS	0.2800%	1			\$43.80
005	Builders Risk	LS	0.4500%	1			\$70.40
006	P & P Bond	LS	1.0000%	1			\$156.44
					Subtotal		\$270.64
	Description				Percent		Amount
	Overhead & Profit				15%		\$2,346.56
	Sales Tax				N/A		
					Total Cost		\$18,260.90

By: Hector Olave
Hector Olave / Dantex General Contractors

By: _____

Date: 1/09/26

Date: _____

Millennium Contracting Services, Inc.

Estimate

3669 Mark Jason Drive
El Paso TX 79938

Date	Estimate #
12/2/2025	2025-145

Name / Address
DantexConstruction Company 4727 Osborne EL Paso, Texas 79922 e6

Project
Horizon City Munici...

Item	Description	Qty	Rate	Amount	MARKUP	Total
	ASI 007 New Power & Data request					
Electrical`	20A Duplex Receptacles w/Cover	7	22.00	154.00		154.00
Electrical`	4square Box	15	6.00	90.00		90.00
Electrical`	Erico 512 T-Bar Bx Hgr	4	18.95	75.80		75.80
Electrical`	20A, 1P C.B.	1	28.00	28.00		28.00
Electrical`	60A, 1P C.B.	2	35.00	70.00		70.00
Electrical`	1/2" conduit w/term	150	1.80	270.00		270.00
Electrical`	1" emt conduit w/term	225	2.75	618.75		618.75
Electrical`	#6	600	1.25	750.00		750.00
Electrical`	#12 wire	450	0.90	405.00		405.00
Electrical`	Journeyman Electrician	100	45.00	4,500.00	20.00%	5,400.00
Electrical`	Helper Labor	100	28.00	2,800.00	20.00%	3,360.00
Electrical`	OH & Profit @ 10%	1	1,122.16	1,122.16		1,122.16
				Total		\$12,343.71

ARCHITECTURAL SUPPLEMENTAL INFORMATION

ASI 007

To: DANTEX Construction
From: Jesus Ortega, EXIGO Architects
Project: HCMF
Date: November 13, 2025
Re: **ASI 007 – New Power and Data request**

The following are supplemental instructions to the Contract Documents. Prior to proceeding with the work, please indicate your acceptance that work will be performed without change to the Contract Sum and/or Contract Tim.

Architectural Supplemental Information:

The Town of Horizon is requesting additional power and data drops at different locations.

List of Drawings / Changes.

1. Electrical.

- a) ASI 007 – E3.0R2 – Delta#4: Power Plan “A”_
- b) ASI 007 – E4.0R3 – Delta#4: Special Systems “A”
- c) ASI 007 – E4.1R1 – Delta#4: Special Systems Plan “B”
- d) ASI 007 – E6.0R2 – Delta#4: Panel Schedules
- e) ASI 007 – E6.1R1 – Delta#4: Panel Schedules

Yours Truly,



Jesus Ortega

architecture . interiors
planning . project management

211 N. Florence Suite 204
El Paso, Texas 79901
www.exigoarch.com
phone 915.533.0323
fax 915.533.0332



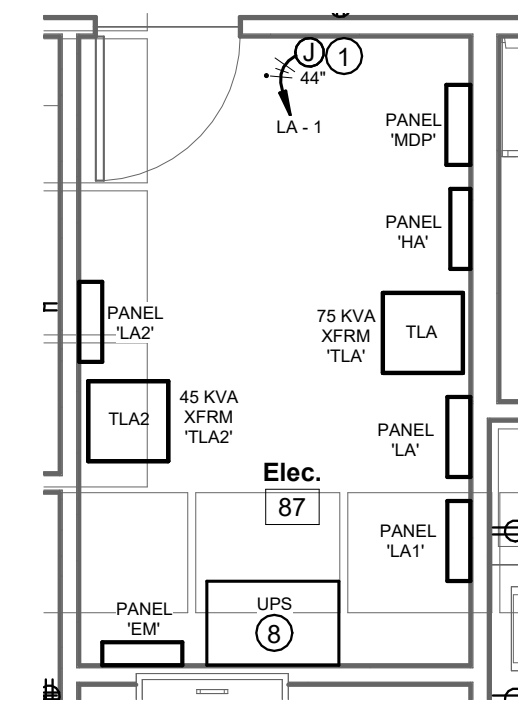
No.	Description	Date
REVISION 1		04/23/21
ASI #007		11/12/25

DRAWING COORDINATION

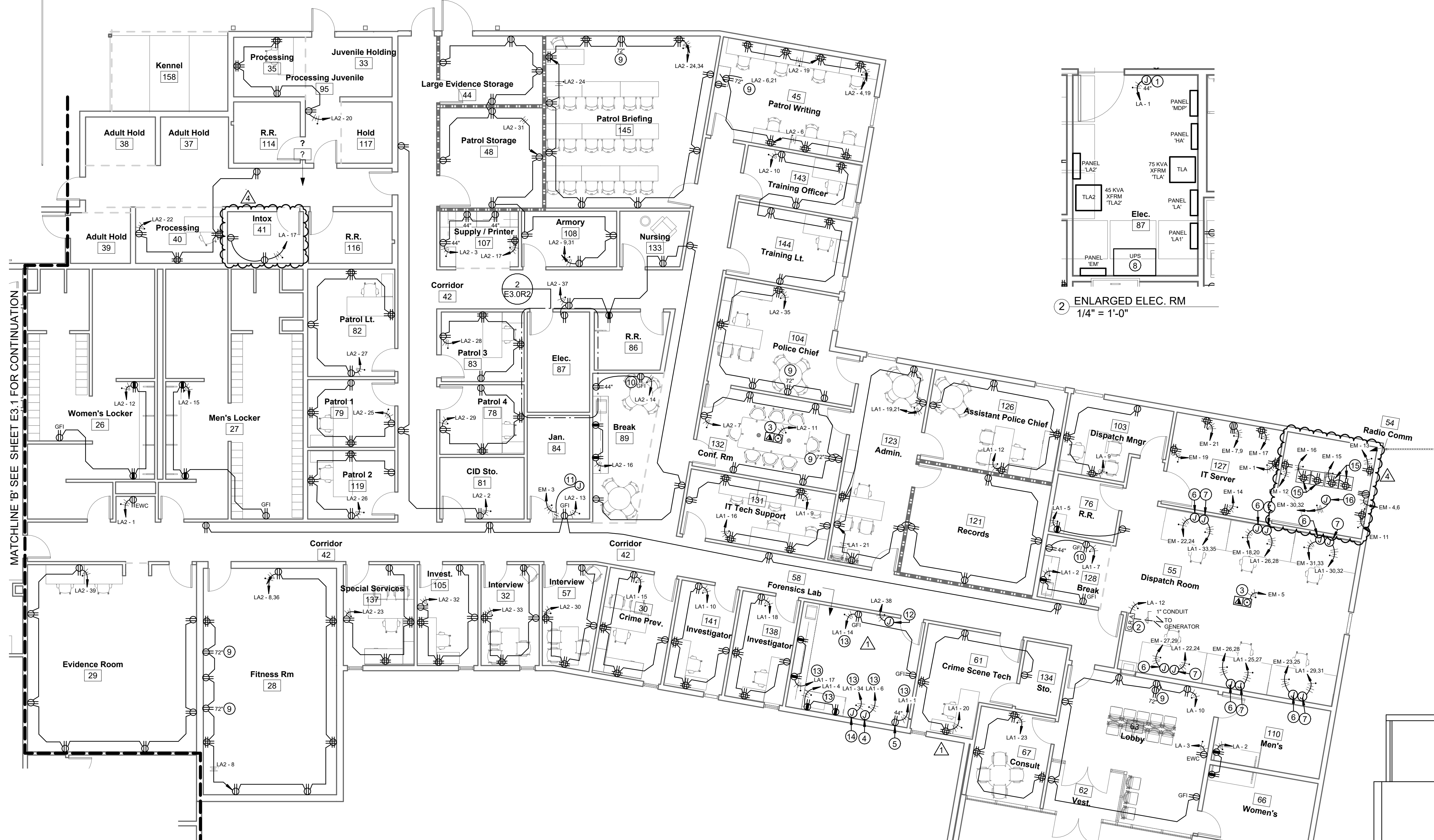
ARCHITECTURAL, CIVIL, MECHANICAL, STRUCTURAL, ELECTRICAL, AND LANDSCAPING DRAWINGS ARE INTERRELATED. GENERAL CONTRACTOR AND ALL SUBCONTRACTORS SHALL REVIEW AND COORDINATE THE ENTIRE SET OF DRAWINGS AND PROJECT MANUAL.

POWER PLAN A KEYED NOTES

- PROVIDE AND INSTALL J-BOX WITH CIRCUIT AS SHOWN AT 44" A.F.F. FOR POWER TO FIRE ALARM CONTROL PANEL.
- PROPOSED LOCATION OF NEW EMERGENCY GENERATOR REMOTE ANNUNCIATOR. PROVIDE AND INSTALL 1" CONDUIT WITH CONTROL WIRING TO EMERGENCY GENERATOR. COORDINATE WITH GENERATOR MANUFACTURER FOR EXACT WIRING SIZE AND INTERCONNECTION REQUIREMENTS.
- PROVIDE AND INSTALL A FLOORBOX WITH (2) DUPLEX RECEPTACLES AND SEPARATE SIDE FOR COMMUNICATIONS FSR MODEL FL-400-BSQ-C OR EQUAL. FLOOR BOX TO BE FLUSHED TO FINISH FLOOR. COORDINATE WITH ARCHITECT/OWNER FOR EXACT LOCATION BEFORE ROUGH-IN.
- CONTRACTOR TO MAKE CONNECTIONS TO FUME HOOD, LIGHTS, SWITCH, AND OUTLETS. COORDINATE WITH FUME HOOD MANUFACTURER FOR EXACT REQUIREMENTS.
- PROVIDE RECEPTACLE WITH CIRCUIT AS SHOWN FOR POWER TO EVIDENCE DRYING CABINET. COORDINATE EXACT LOCATION AND HEIGHT WITH OWNER.
- PROVIDE AND INSTALL A 4" SQ. DEEP J-BOX BEHIND DISPATCH STATION ACCESS PANEL TO PROVIDE POWER TO THE TWO (2) EMERGENCY QUAD OUTLETS INSTALLED WITHIN STATION FURNITURE. SEE DETAIL 1/E3.0 ON THIS SHEET.
- PROVIDE AND INSTALL A 4" SQ. DEEP J-BOX BEHIND DISPATCH STATION ACCESS PANEL TO PROVIDE POWER TO THE NON EMERGENCY QUAD RECEPTACLE. SEE DETAIL 1/E3.0 ON THIS SHEET.
- PROVIDE AND INSTALL A 30KVA, 120/208V, 3PH, UPS SCHNEIDER ELECTRIC GALAXY GVSUPS30K085FS OR EQUAL UPS SYSTEM TO BE PROVIDED WITH AN INTEGRAL 80A, CIRCUIT BREAKER FOR POWER TO THE EMERGENCY PANELBOARD 'EM'. UPS MUST HAVE A MIN. OF 1HR OF BATTERY BACKUP.
- PROVIDE AND INSTALL RECEPTACLE AT 72" A.F.F. FOR TV MONITOR. COORDINATE EXACT LOCATION AND HEIGHT WITH ARCHITECTURAL PLANS BEFORE INSTALLATION.
- PROVIDE AND INSTALL A GFI RECEPTACLE IN AN ACCESSIBLE LOCATION TO PROTECT REFRIGERATOR RECEPTACLE.
- PROVIDE AND INSTALL J-BOX WITH CIRCUIT AS SHOWN FOR POWER TO WATER HEATER RECIRCULATING PUMP. INSTALL J-BOX ADJACENT TO PUMP AND MAKE CONNECTIONS WITH FLEXIBLE WATER TIGHT CONDUIT. RECIRCULATING PUMP TO BE CONTROLLED BY A SWITCH INSTALLED ON WALL AT 44" A.F.F. AS SHOWN. PROVIDE A PERMANENT LABEL ON SWITCH INDICATING 'RECIRCULATING PUMP'.
- PROVIDE AND INSTALL A J-BOX WITH A 15A, 120V, CIRCUIT FOR EMERGENCY PUSH-BUTTON. EMERGENCY PUSH BUTTON TO SHUT-OFF ALL ELECTRICAL POWER IN THIS ROOM. SEE DETAIL 2/E3.0 ON THIS SHEET. EM PUSH BUTTON TO BE 15 AMP, 120V, MUSHROOM TYPE RED COLOR MOUNTED AT 48" A.F.F. ENGRAVE BUTTON INDICATING "EMERGENCY POWER SHUT-OFF"
- THIS CIRCUIT TO BE WIRED THRU CONTACTOR C1 FOR EMERGENCY SHUT-OFF. SEE DETAIL 2/E3.0 ON THIS SHEET.
- PROVIDE AND INSTALL J-BOX WITH CIRCUIT AS SHOWN FOR POWER TO HOT WATER, COLD WATER, AND GAS LINE 120V ELECTRIC VALVES. MAKE CONNECTIONS TO VALVES AS REQUIRED. COORDINATE WITH PLUMBING PLANS FOR EXACT LOCATION AND REQUIREMENTS.
- PROVIDE AND INSTALL QUADRUPEX RECEPTACLES FLUSH TO CEILING FOR POWER TO DATA RACK EQUIPMENT. COORDINATE WITH DATA RACK INSTALLER FOR EXACT LOCATION BEFORE DOING ANY WORK. SEE CEILING MOUNTED QUADRUPEX RECEPTACLE MOUNTING DETAIL 3/E4.0 ON SHEET E4.0 FOR REQUIREMENTS.
- PROVIDE AND INSTALL J-BOX WITH (2) 120V CIRCUITS FOR POWER TO PDU EQUIPMENT RACK #2. MAKE HARD WIRE CONNECTIONS TO PDU WITH FLEXIBLE CONDUIT PROPERLY RAN AND SUPPORTED THROUGH EQUIPMENT RACK WITH 1" CONDUIT WITH 4-#6 THWN, CU, CONDRS. AND 1-#10 CU. GND. COORDINATE WITH EQUIPMENT INSTALLER FOR EXACT LOCATION BEFORE DOING ANY WORK. SEE CEILING MOUNTED BOX DETAIL 4/E4.0 ON SHEET E4.0 FOR REQUIREMENTS.



2 ENLARGED ELEC. RM
1/4" = 1'-0"



1 POWER PLAN SECTION A
1/8" = 1'-0"

CIRCUIT NUMBER	CIRCUIT BREAKER	LOAD
HA-32	20/1	FORENSICS LAB LIGHTS
LA1-1	20/1	EVIDENCE DRYING CABINET
LA1-3	20/1	FUME HOOD EXHAUST FAN
LA1-6	20/1	FUME HOOD LIGHTS AND RECEPTACLES
LA1-4	20/1	FORENSICS LAB RECEPTACLES
LA1-17	20/1	FORENSICS LAB RECEPTACLES
LA1-14	20/1	FORENSICS LAB RECEPTACLES
LA1-34	20/1	GAS, HW, CW LINE VALVES
MDP-20,22,24		ACU-9
SPARE		SPACE
SPARE		SPACE
SPARE		SPACE

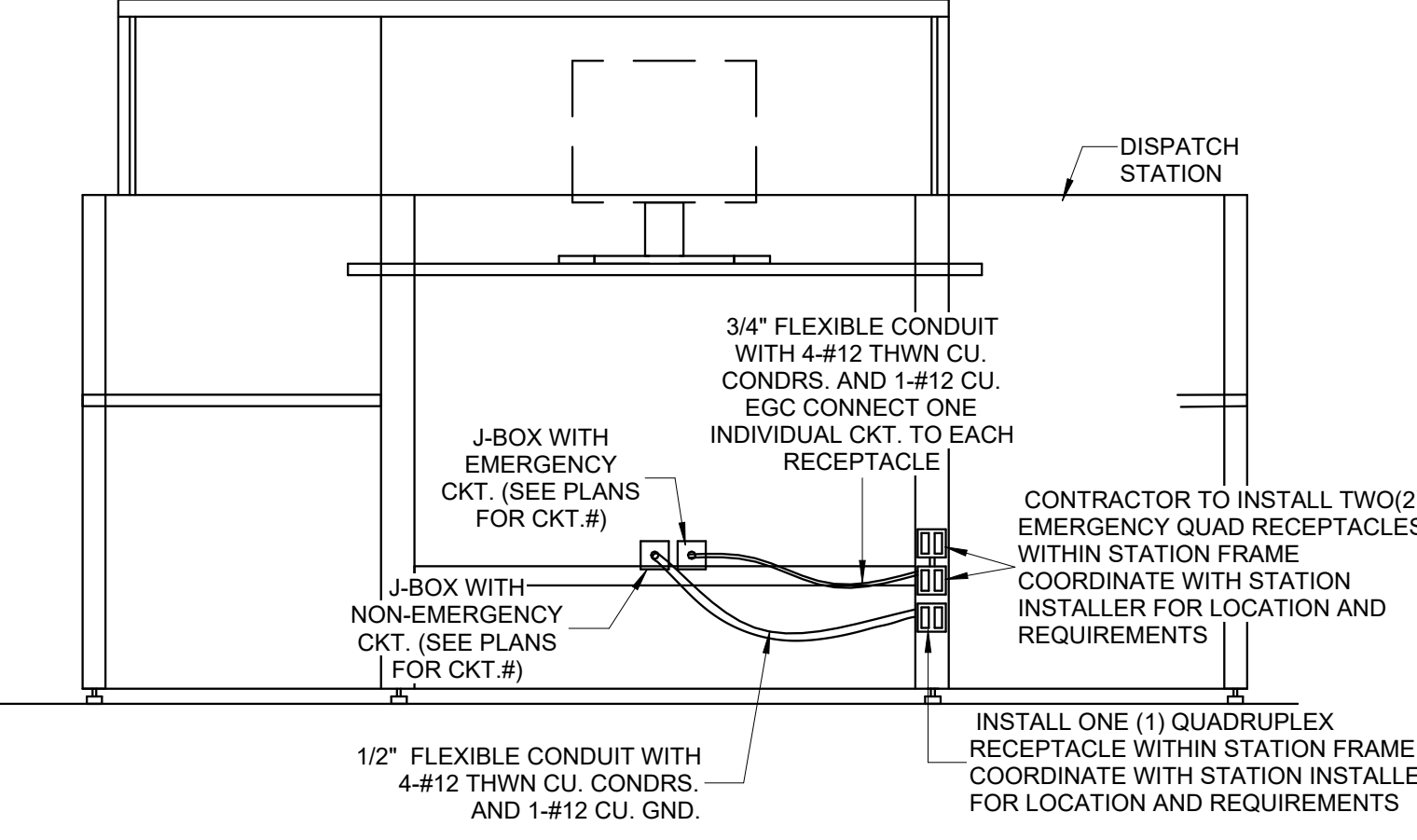
EMERGENCY SHUT-OFF CONTACTOR DETAIL KEYNOTES:

- CONTACTOR 'C1', ELECTRICALLY HELD, 14 POLE, 20A, POLE RATING MIN. 600 VOLT RATING, NEMA 1 ENCLOSURE. LABEL 'FORENSICS LAB EMERGENCY POWER SHUTDOWN' WITH ENGRAVED NAMEPLATE ATTACHED WITH SCREWS. CONTRACTOR TO MOUNT CONTACTOR IN A NEMA ENCLOSURE ABOVE IN CEILING SPACE. 120V COIL CONTROLLED BY EMERGENCY SHUT-OFF BUTTON.

2 EMERGENCY SHUT-OFF CONTACTOR DETAIL - FORENSICS LAB 58
E3.0 NTS

1 DISPATCH STATION POWER CONNECTIONS DETAIL
E3.0 NTS

NOTE: CONTRACTOR MUST COORDINATE WITH DISPATCH STATION INSTALLER FOR EXACT LOCATION OF BOXES AND RECEPTACLES. BOXES INSTALLED IN WALLS MUST BE INSTALLED BEHIND DISPATCH STATION ACCESS PANEL.





No.	Description	Date
1	ASI #1	04/15/25
2	ASI #002	5/15/25
3	ASI #007	11/12/25

DRAWING COORDINATION
ARCHITECTURAL, CIVIL, MECHANICAL,
STRUCTURAL, ELECTRICAL, AND
LANDSCAPING DRAWINGS ARE
INTERRELATED. GENERAL CONTRACTOR
AND ALL SUBCONTRACTORS SHALL REVIEW
AND COORDINATE THE ENTIRE SET OF
DRAWINGS AND PROJECT MANUAL.

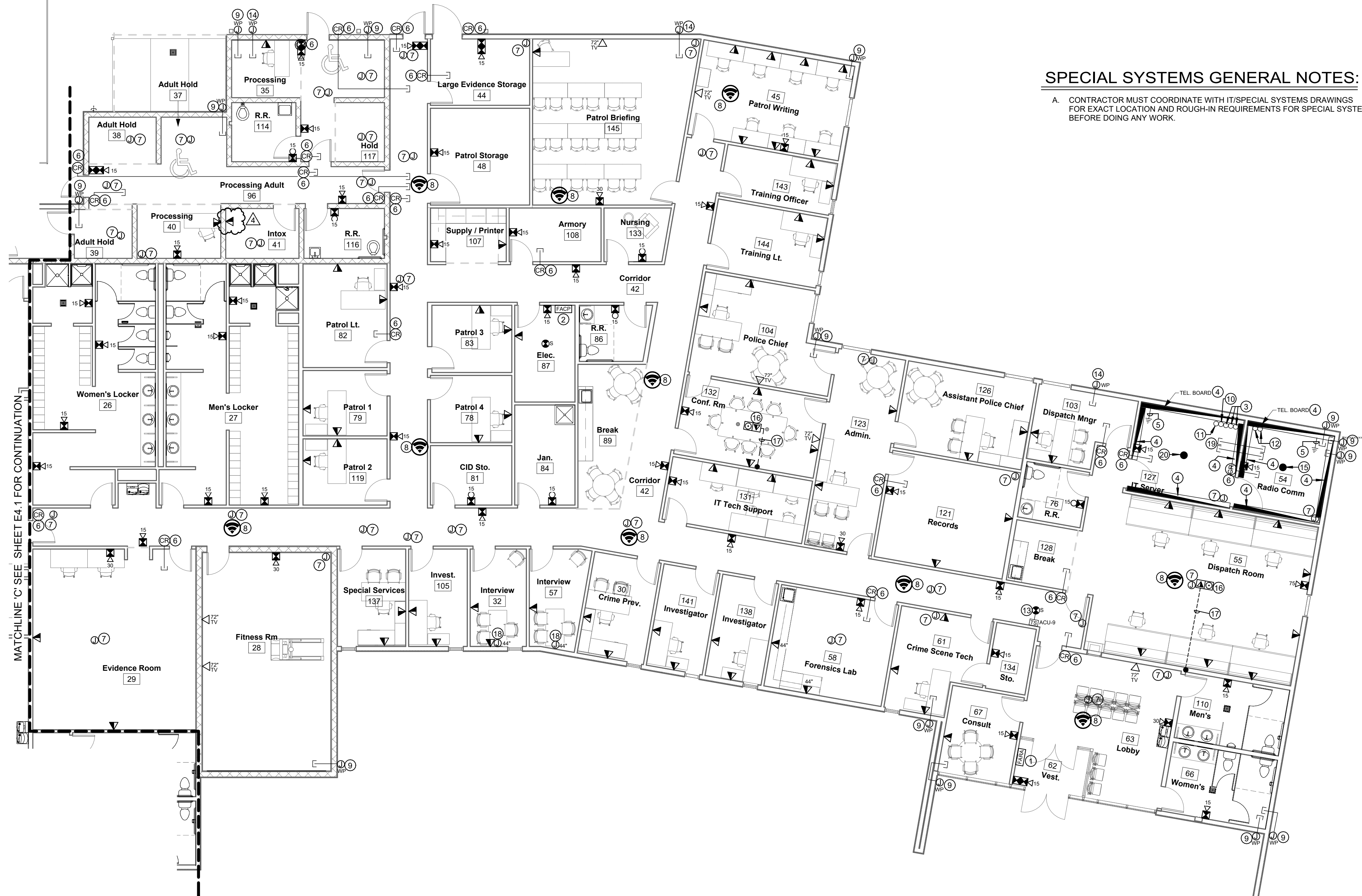
**SPECIAL
SYSTEMS PLAN
'A'
E4.0R3**

SPECIAL SYSTEMS GENERAL NOTES:

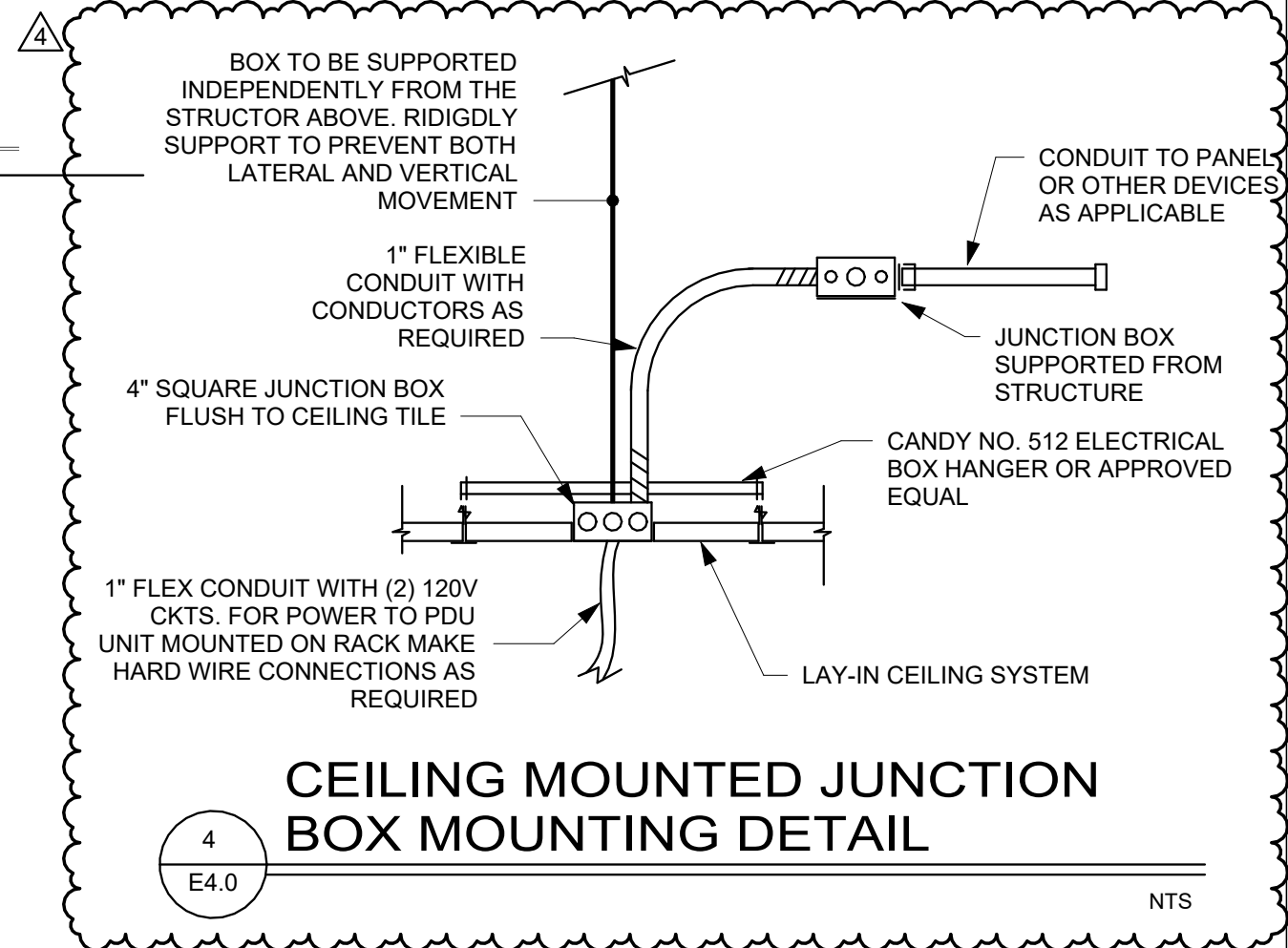
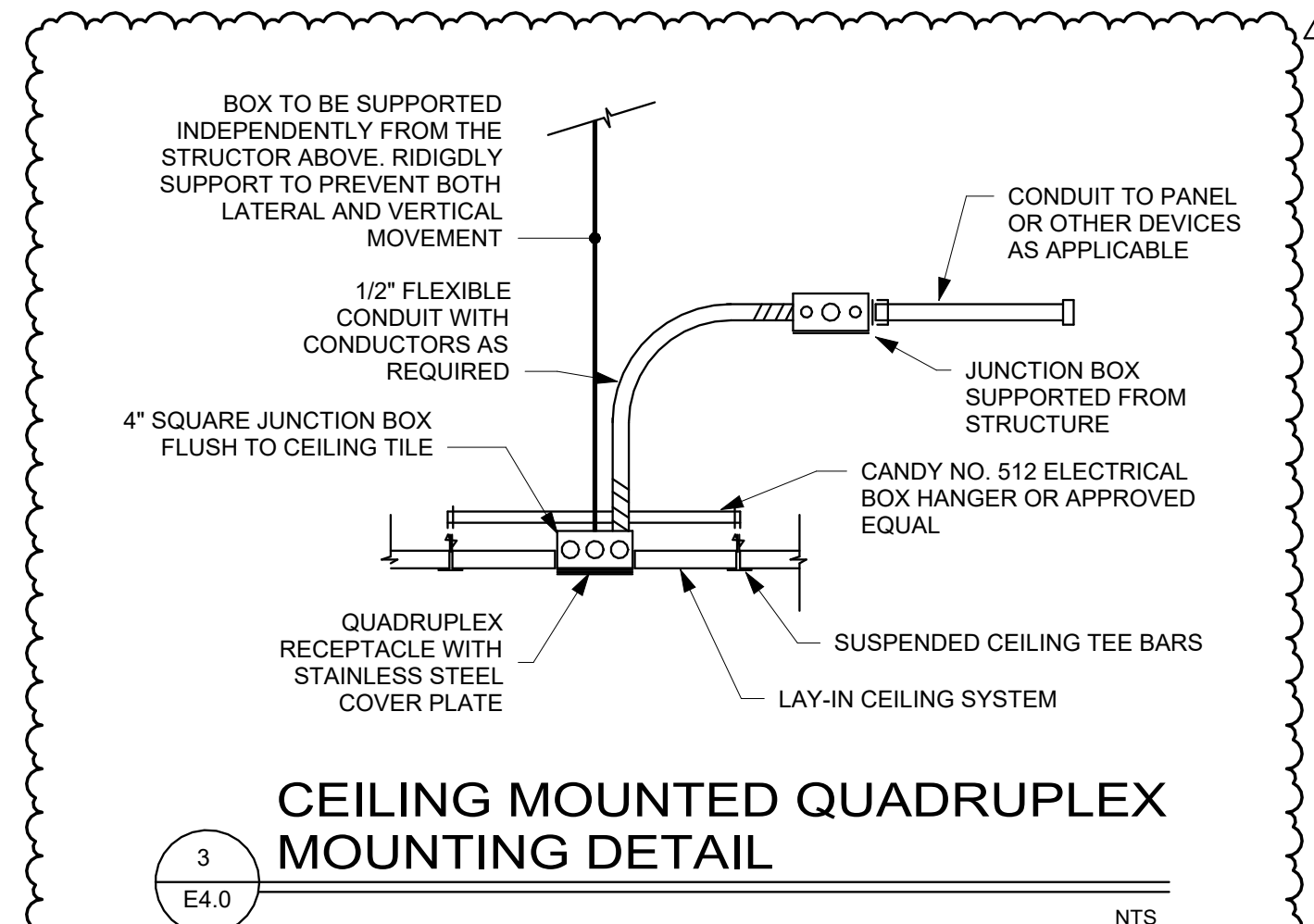
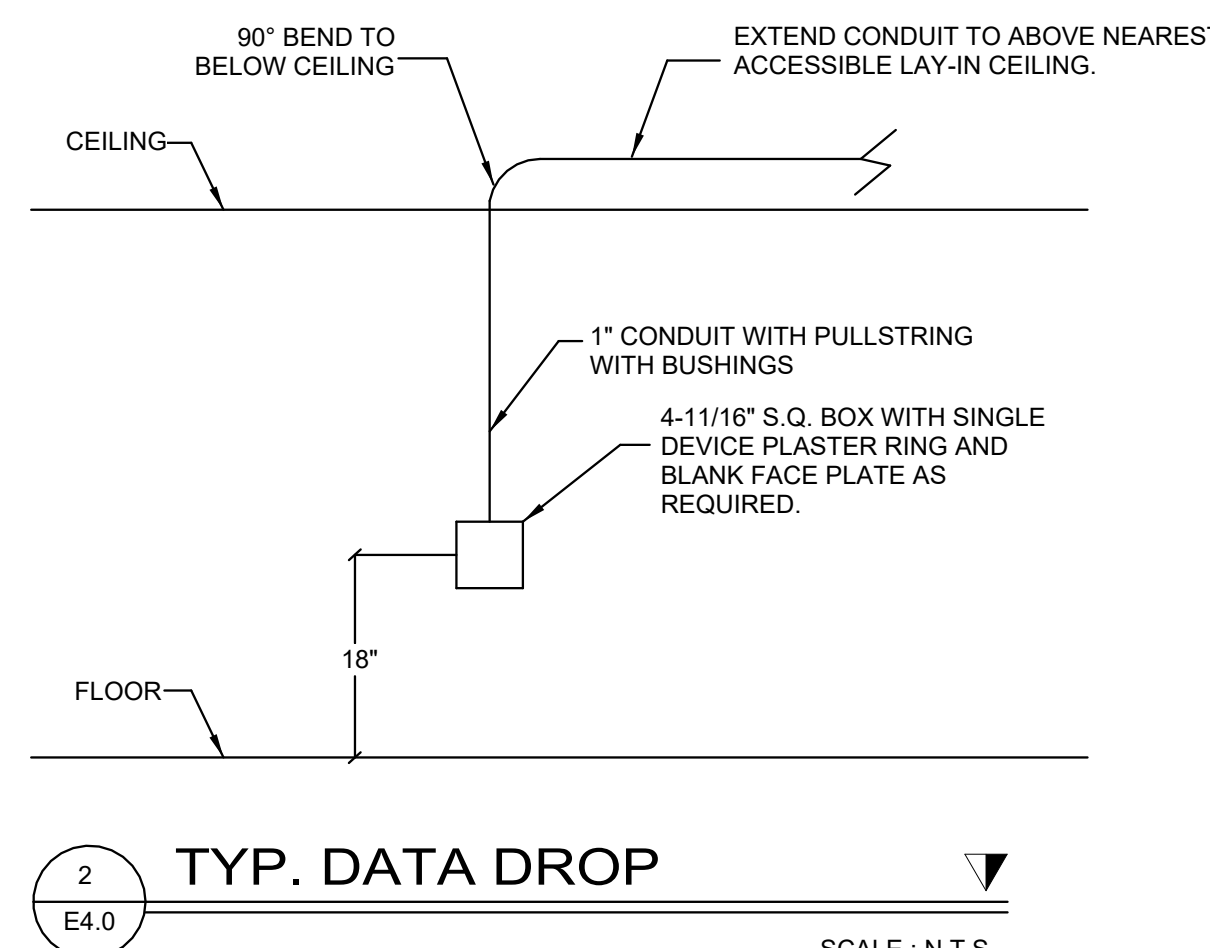
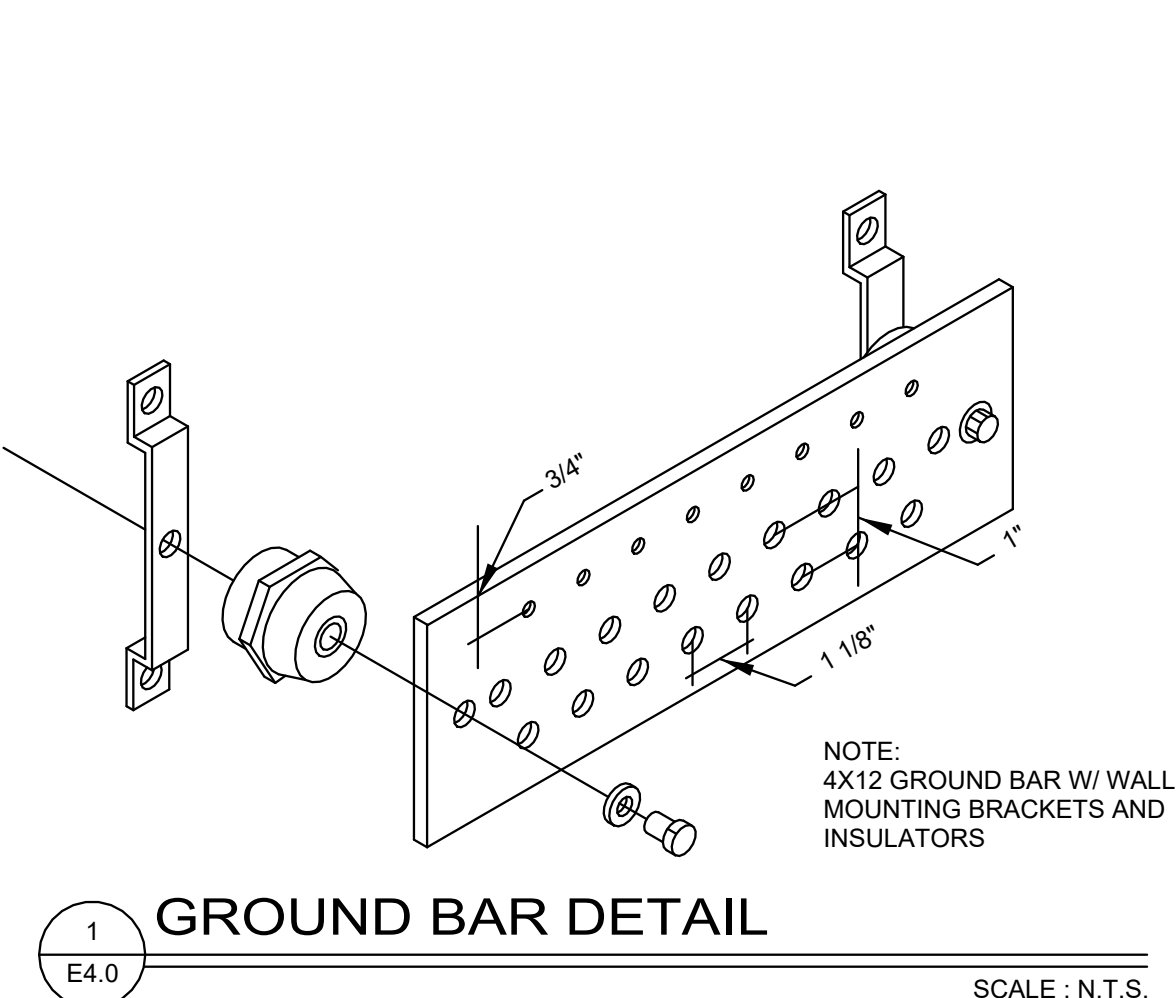
A. CONTRACTOR MUST COORDINATE WITH IT/SPECIAL SYSTEMS DRAWINGS FOR EXACT LOCATION AND ROUGH-IN REQUIREMENTS FOR SPECIAL SYSTEMS BEFORE DOING ANY WORK.

SPECIAL SYSTEMS PLAN A KEYED NOTES

- PROPOSED LOCATION OF NEW FIRE ALARM REMOTE ANNUNCIATOR. ELECTRICAL CONTRACTOR MUST COORDINATE WITH FIRE ALARM INSTALLER FOR EXACT LOCATION BEFORE ROUGH IN.
- PROPOSED LOCATION OF NEW FIRE ALARM CONTROL PANEL IN ELECTRICAL ROOM. ELECTRICAL CONTRACTOR MUST COORDINATE WITH FIRE ALARM INSTALLER FOR EXACT LOCATION BEFORE ROUGH-IN.
- STUB-UP LOCATION OF THE THREE (3) 3" CONDUITS FOR TELEPHONE/DATA. STUB-UP CONDUITS 24" A.F.F. PROVIDE CONDUITS WITH PULLSTRING AND END BUSHINGS. COORDINATE WITH NOTE #4 ON SITEPLAN SHEET E1.0.
- PROVIDE AND INSTALL 3/4" SHEETS OF A-C GRADE, FIRE RETARDANT TREATED PLYWOOD ON THE ENTIRE WALL. THE PLYWOOD SHALL REACH FROM CORNER TO CORNER. INSTALL PLYWOOD VERTICALLY AT 12" A.F.F. PAINT PLYWOOD WITH TWO (2) COATS OF FIRE RETARDANT LOW GLOSS, WHITE PAINT.
- PROVIDE AND INSTALL GROUNDING BAR AT 30" A.F.F. INSTALL 1/2" CONDUIT WITH 1-#6 CU. GND. CABLE FROM GROUNDING BAR TO THE MAIN PANEL "MDP" GROUNDING BAR. SEE DETAIL 1/E4.0 ON THIS SHEET.
- PROVIDE AND INSTALL A 4"x4"x2 1/2" BOX WITH SINGLE DEVICE PLASTER RING AT 48" A.F.F. FOR CARD READER, CARD READER AND ASSOCIATED WIRING PROVIDED BY OTHERS. INSTALL 1" CONDUIT WITH PULLSTRING AND END BUSHINGS FROM BOX TO ABOVE NEAREST ACCESSIBLE LAY-IN CEILING. STUB-OUT CONDUIT ABOVE ACCESSIBLE CEILING OF THE SECURED SIDE. SEE DETAIL 1/E4.1 ON SHEET E4.1.
- PROVIDE AND INSTALL A 4" SQ. J-BOX FLUSH TO CEILING FOR FUTURE CAMERA INSTALLED BY OTHERS. INSTALL A 1" CONDUIT WITH PULLSTRING AND END BUSHINGS FROM BOX TO ABOVE NEAREST ACCESSIBLE LAY-IN CEILING. COORDINATE EXACT LOCATION WITH IT/SECURITY CONTRACTOR. SEE DETAIL 2/E4.1 ON SHEET E4.1.
- PROVIDE AND INSTALL 4" SQ. J-BOX WITH SINGLE DEVICE PLASTER RING AND 1" CONDUIT TO ABOVE NEAREST ACCESSIBLE LAY-IN CEILING FOR WIRELESS ACCESS POINT. COORDINATE WITH IT/SECURITY CONTRACTOR FOR EXACT LOCATION AND REQUIREMENTS. REFER TO DETAIL 4/E4.1 ON SHEET E4.1.
- PROVIDE AND INSTALL A WP 4" SQ. J-BOX ON EXTERIOR WALL AT 10'-0" A.F.F. FOR CAMERA. FROM BOX INSTALL A 1" CONDUIT WITH PULLSTRING TO ABOVE NEAREST ACCESSIBLE LAY-IN CEILING INSIDE BUILDING. COORDINATE WITH IT/SECURITY CONTRACTOR FOR EXACT LOCATION AND HEIGHT BEFORE ROUGH-IN. REFER TO DETAIL 5/E4.1 ON SHEET E4.1.
- STUB-UP LOCATION OF 3" UG CONDUIT FOR FUTURE BUILDING COMMUNICATIONS CABLE. COORDINATE WITH NOTE #7 ON SHEET E1.0.
- STUB-UP LOCATION OF 3" UG CONDUIT FROM IDF ROOM 136 ON SECTION 'B'. COORDINATE WITH NOTE #8 ON SHEET E1.0.
- STUB-UP LOCATION OF THE TWO (2) 3" CONDUITS TO THE ANTENNA. COORDINATE WITH NOTE #11 ON SHEET E1.0.
- PROVIDE AND INSTALL A DUCT SMOKE DETECTOR WITH A REMOTE TEST SWITCH LOCATED ON WALL AT 44" A.F.F. CONNECT SMOKE DETECTOR TO FIRE ALARM SYSTEM. PROVIDE A LAMMOTTE PLAQUE ON TEST SWITCH INDICATING ASSOCIATED UNIT.
- PROVIDE AND INSTALL A WP 4" SQ. J-BOX WITH SINGLE DEVICE PLASTER RING ON EXTERIOR WALL AT 10'-0" A.F.F. FOR WIRELESS ACCESS POINT. COORDINATE WITH IT/SECURITY CONTRACTOR FOR EXACT LOCATION AND HEIGHT BEFORE ROUGH-IN. REFER TO DETAIL 5/E4.1.
- PROVIDE AND INSTALL A 4" CONDUIT FROM RADIO COMM. ROOM TO ROOF. STUB-UP CONDUIT AT 2FT. AFTER FINISH ROOF. PROVIDE AND INSTALL A WEATHER HEAD FOR A TOTAL OF SIX (6) COAXIAL CABLES. WEATHER HEAD TO BE KILLARK-HUBBELL #5TF- OR EQUAL. COORDINATE WITH IT/SECURITY CONTRACTOR FOR EXACT LOCATION AND REQUIREMENTS.
- PROVIDE AND INSTALL A FLOORBOX WITH (2) DUPLEX RECEPTACLES AND SEPARATE SIDE FOR COMMUNICATIONS FSR MODEL FL-400-BSQ-C. FLOOR BOX TO BE FLUSHED TO FINISH FLOOR. COORDINATE WITH ARCHITECT/TOWNER FOR EXACT LOCATION BEFORE ROUGH-IN.
- PROVIDE AND INSTALL A 2" UG CONDUIT FROM FLOORBOX (COMMUNICATIONS SIDE) TO WALL. RUN CONDUIT RECESSED IN WALL TO ABOVE NEAREST ACCESSIBLE LAY-IN CEILING SPACE. PROVIDE CONDUIT WITH PULLSTRING AND END BUSHINGS.
- PROVIDE AND INSTALL A 4" DEEP SQ. BOX AT 44" A.F.F. FOR FUTURE INTERIOR CAMERA. RUN A 1" CONDUIT FROM BOX TO ABOVE ACCESSIBLE CEILING IN ROOM 105. PROVIDE CONDUIT WITH PULLSTRING AND END BUSHINGS. COORDINATE WITH IT/SECURITY CONTRACTOR FOR EXACT LOCATION AND REQUIREMENTS BEFORE ROUGH-IN.
- PROVIDE AND INSTALL TWO (2) 3" CONDUIT SLEEVES BETWEEN IT SERVER ROOM AND RADIO ROOM. INSTALL CONDUITS ABOVE ACCESSIBLE CEILING.
- PROVIDE AND INSTALL A 4" CONDUIT FROM I.T ROOM TO ROOF. STUB-UP CONDUIT AT 2FT. AFTER FINISH ROOF. PROVIDE AND INSTALL A WEATHER HEAD FOR A TOTAL OF SIX (6) COAXIAL CABLES. WEATHER HEAD TO BE KILLARK-HUBBELL #5TF- OR EQUAL. COORDINATE WITH IT/SECURITY CONTRACTOR FOR EXACT LOCATION AND REQUIREMENTS.



1 SPECIAL SYSTEMS SECTION 'A'
1/8" = 1'-0"



C:\Users\alpha1\Documents\11.12.25 ASB R007 RVT 2d_fpadilla@alpha-engr.com
SHEET: 24"x36" 11/13/2025 12:18:24 PM



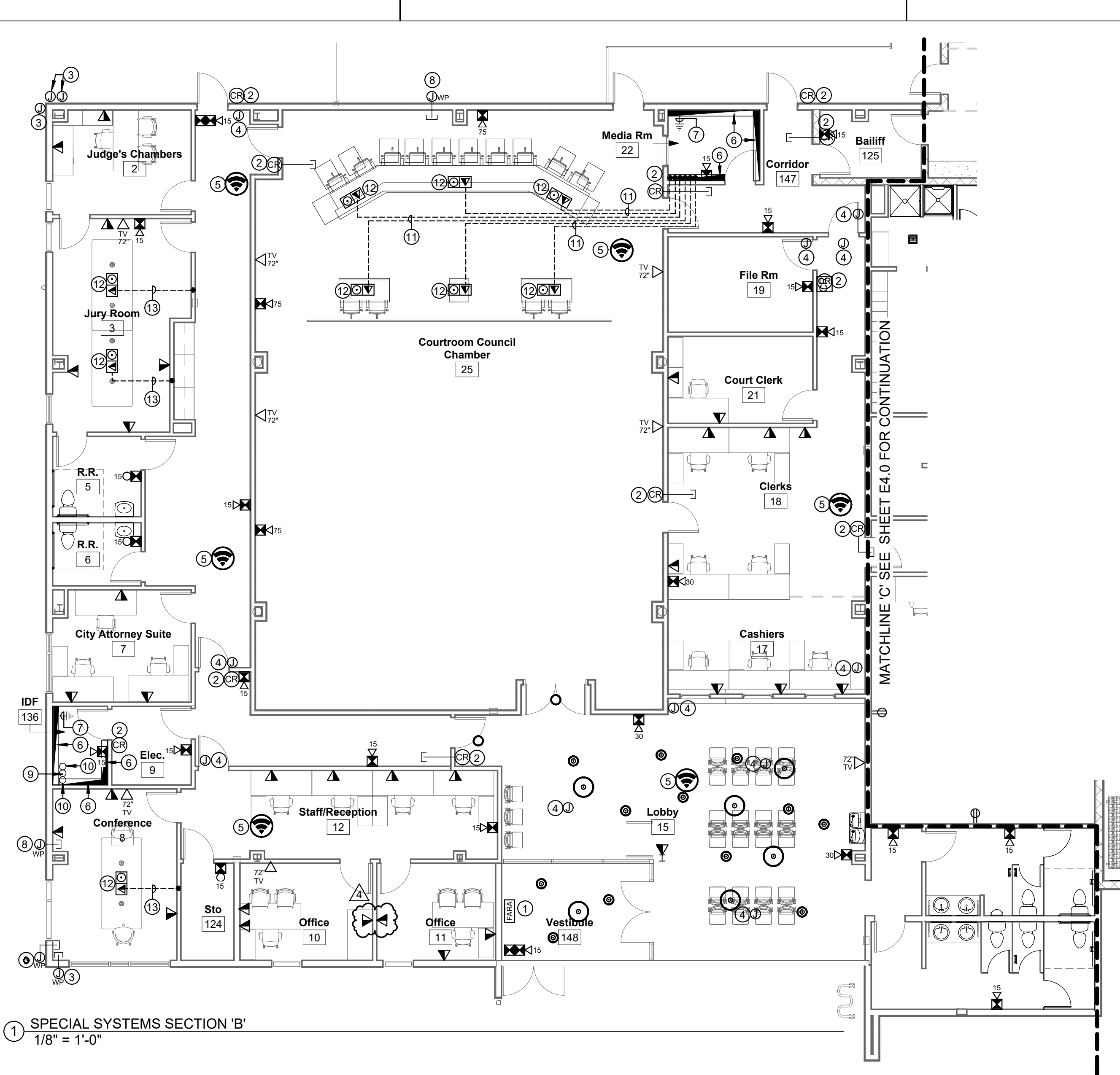
No.	Description	Date
▲	ASI #007	11/12/25

DRAWING COORDINATION

ARCHITECTURAL, CIVIL, MECHANICAL, STRUCTURAL, ELECTRICAL, AND LANDSCAPING DRAWINGS ARE INTERRELATED. GENERAL CONTRACTOR AND ALL SUBCONTRACTORS SHALL REVIEW AND COORDINATE THE ENTIRE SET OF DRAWINGS AND PROJECT MANUAL.

SPECIAL SYSTEMS PLAN 'B'

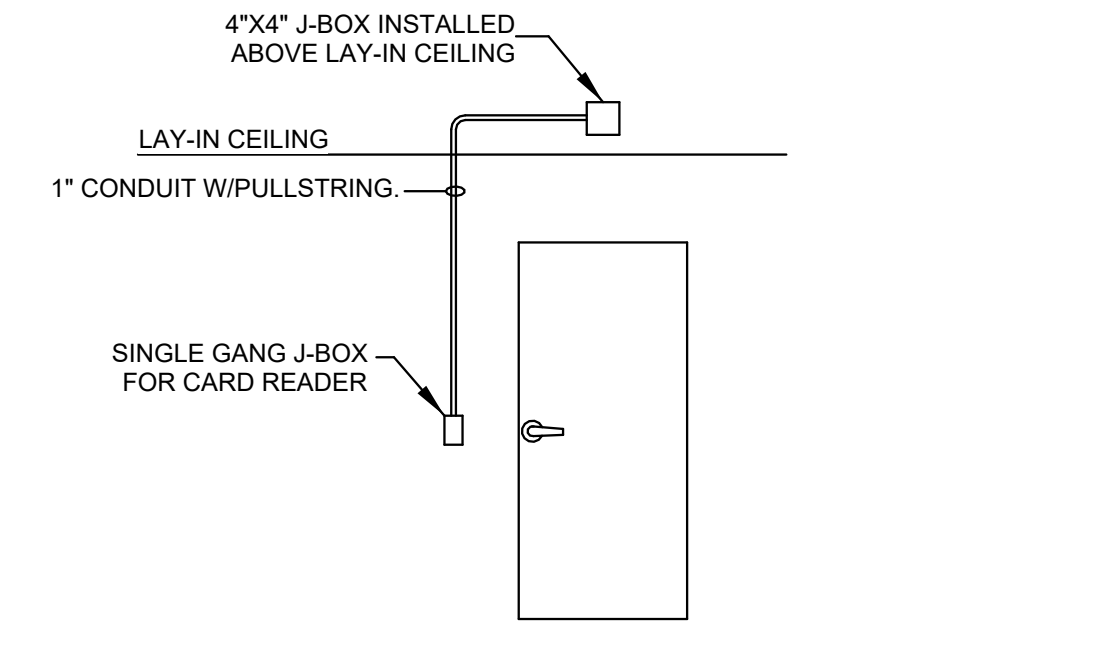
E4.1R1



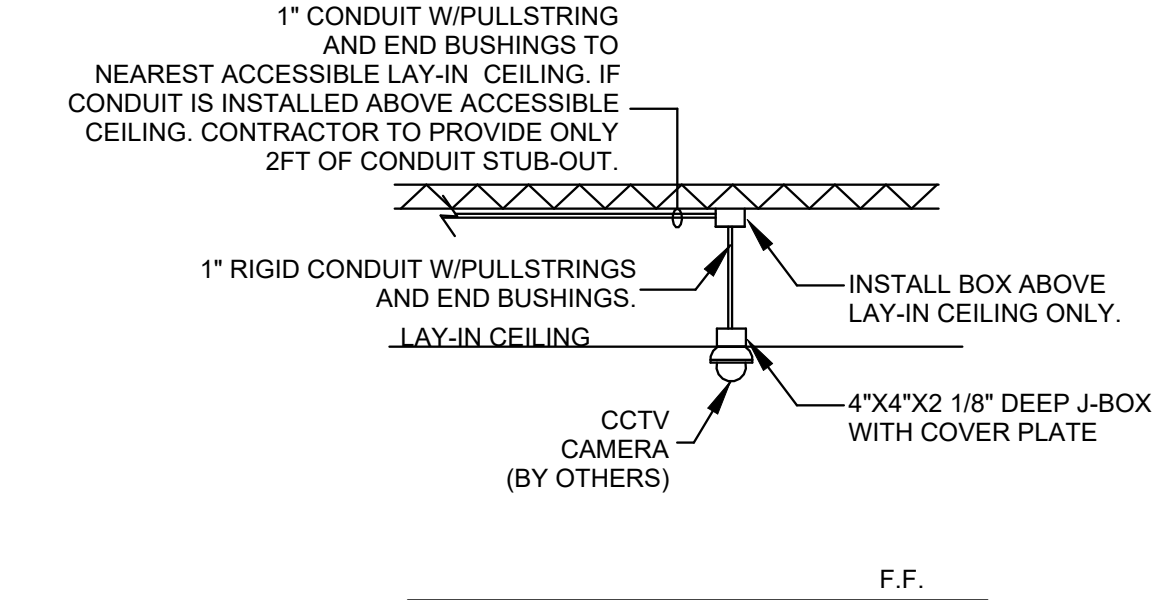
1 SPECIAL SYSTEMS SECTION 'B'
1/8" = 1'-0"

SPECIAL SYSTEMS PLAN B KEYED NOTES

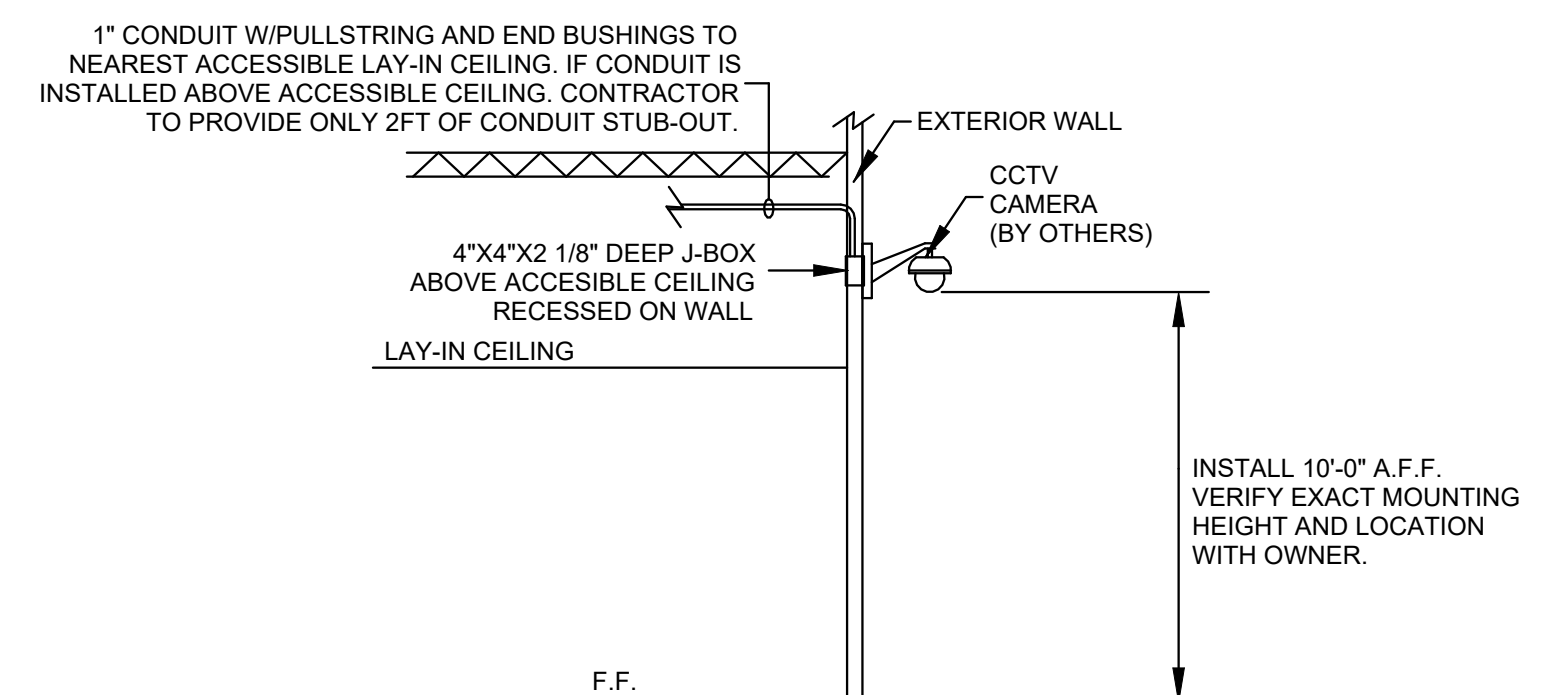
- PROPOSED LOCATION OF SECOND NEW FIRE ALARM REMOTE ANNUNCIATOR. ELECTRICAL CONTRACTOR MUST COORDINATE WITH FIRE ALARM INSTALLER FOR EXACT LOCATION BEFORE ROUGH-IN.
- PROVIDE AND INSTALL A 4"x4"x2 1/2" BOX WITH SINGLE DEVICE PLASTER RING AT 48" A.F.F. FOR CARD READER. CARD READER AND ASSOCIATED WIRING PROVIDED BY OTHERS. INSTALL 1" CONDUIT WITH PULLSTRING AND END BUSHINGS FROM BOX TO ABOVE NEAREST ACCESSIBLE LAY-IN CEILING. STUB-OUT CONDUIT ABOVE ACCESSIBLE CEILING OF THE SECURED SIDE. SEE DETAIL 1/E4.1 ON THIS SHEET.
- PROVIDE AND INSTALL A WP 4" SQ. J-BOX ON EXTERIOR WALL AT 10'-0" A.F.F. FOR CAMERA. FROM BOX INSTALL A 1" CONDUIT WITH PULLSTRING TO ABOVE NEAREST ACCESSIBLE LAY-IN CEILING INSIDE BUILDING. COORDINATE WITH IT/SECURITY CONTRACTOR FOR EXACT LOCATION AND HEIGHT BEFORE ROUGH-IN. REFER TO DETAIL 3/E4.1 ON THIS SHEET.
- PROVIDE AND INSTALL A 4" SQ. J-BOX FLUSH TO CEILING FOR FUTURE CAMERA INSTALLED BY OTHERS. INSTALL 1" CONDUIT WITH PULLSTRING AND END BUSHINGS FROM BOX TO ABOVE NEAREST ACCESSIBLE LAY-IN CEILING. COORDINATE EXACT LOCATION WITH IT/SECURITY CONTRACTOR. SEE DETAIL 2/E4.1 ON THIS SHEET.
- PROVIDE AND INSTALL 4" SQ. J-BOX WITH SINGLE DEVICE PLASTER RING AND 1" CONDUIT TO ABOVE NEAREST ACCESSIBLE LAY-IN CEILING FOR WIRELESS ACCESS POINT. COORDINATE WITH IT/SECURITY CONTRACTOR FOR EXACT LOCATION AND REQUIREMENTS. REFER TO DETAIL 4/E4.1 ON THIS SHEET.
- PROVIDE AND INSTALL 3/4" SHEETS OF A-C GRADE, FIRE RETARDANT TREATED PLYWOOD ON THE ENTIRE WALL. THE PLYWOOD SHALL REACH FROM CORNER TO CORNER. INSTALL PLYWOOD VERTICALLY AT 12" A.F.F. PAINT PLYWOOD WITH TWO (2) COATS OF FIRE RETARDANT LOW GLOSS, WHITE PAINT.
- PROVIDE AND INSTALL GROUNDING BAR AT 30" A.F.F. INSTALL 1/2" CONDUIT WITH #6 CU. GND. CABLE FROM GROUNDING BAR TO PANEL 'HA' GROUNDING BAR. SEE DETAIL 1/E4.0 ON SHEET E4.0.
- PROVIDE AND INSTALL A WP 4" SQ. J-BOX WITH SINGLE DEVICE PLASTER RING ON EXTERIOR WALL AT 10'-0" A.F.F. FOR WIRELESS ACCESS POINT. COORDINATE WITH I.T. CONTRACTOR FOR EXACT LOCATION AND HEIGHT BEFORE ROUGH-IN. REFER TO DETAIL 5/E4.1 ON THIS SHEET.
- PROPOSED STUB-UP LOCATION OF THE 3" UG CONDUIT FROM MAIN I.T. ROOM TO THIS APPROXIMATE LOCATION. COORDINATE WITH NOTE #6 ON SITE PLAN SHEET E1.0.
- PROPOSED STUB-UP LOCATION OF THE 3" UG CONDUIT FOR FUTURE BUILDING. COORDINATE WITH NOTE #7 ON SITE PLAN SHEET E1.0.
- PROVIDE AND INSTALL A 2" UG CONDUIT FROM FLOORBOX TO MEDIA ROOM AS SHOWN COORDINATE EXACT STUB-UP LOCATION WITH IT/SECURITY PLANS BEFORE ROUGH-IN. PROVIDE CONDUIT WITH PULLSTRING AND END BUSHINGS.
- PROVIDE AND INSTALL A FLOORBOX WITH (2) DUPLEX RECEPTACLES AND SEPARATE SIDE FOR COMMUNICATIONS FSR MODEL FL-400-BSQ-C. FLOOR BOX TO BE FLUSH TO FINISH FLOOR. COORDINATE WITH ARCHITECT/OWNER FOR EXACT LOCATION BEFORE ROUGH-IN.
- PROVIDE AND INSTALL A 2" UG CONDUIT FROM FLOORBOX (COMMUNICATIONS SIDE) TO WALL. RUN CONDUIT RECESSED IN WALL TO ABOVE ACCESSIBLE CEILING SPACE. PROVIDE CONDUIT WITH PULLSTRING AND END BUSHINGS.



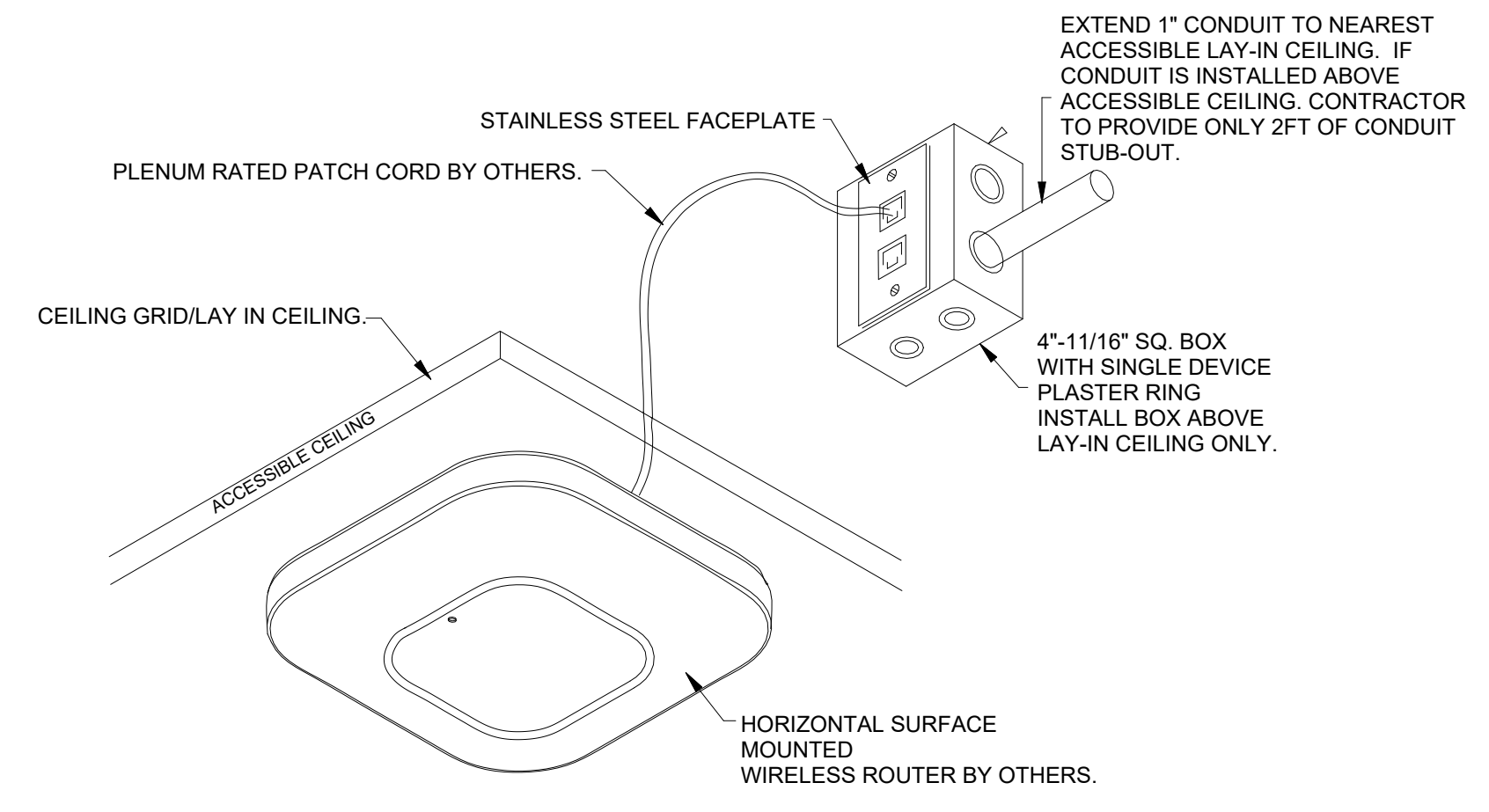
1
E4.1
VERIFY EXACT ROUGH-IN REQUIREMENTS WITH IT/SECURITY CONTRACTOR BEFORE DOING ANY WORK. N.T.S.



2
E4.1
VERIFY EXACT ROUGH-IN REQUIREMENTS WITH IT/SECURITY CONTRACTOR BEFORE DOING ANY WORK. N.T.S.



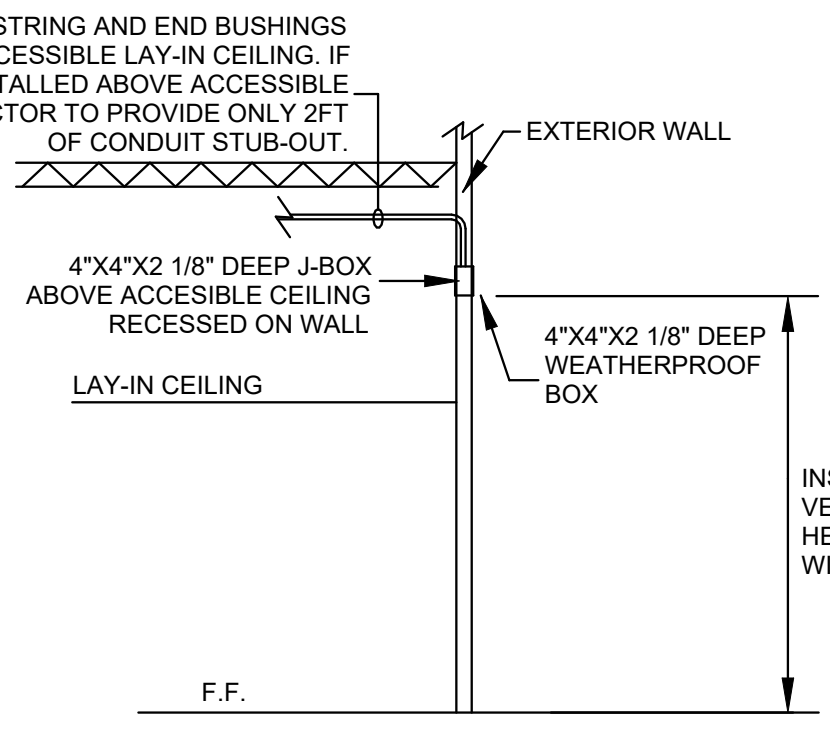
3
E4.1
VERIFY EXACT ROUGH-IN REQUIREMENTS WITH IT/SECURITY CONTRACTOR BEFORE DOING ANY WORK. N.T.S.



4
E4.1
VERIFY EXACT ROUGH-IN REQUIREMENTS WITH IT/SECURITY CONTRACTOR BEFORE DOING ANY WORK. N.T.S.

SPECIAL SYSTEMS GENERAL NOTES:

- A. CONTRACTOR MUST COORDINATE WITH IT/SPECIAL SYSTEMS DRAWINGS FOR EXACT LOCATION AND ROUGH-IN REQUIREMENTS FOR SPECIAL SYSTEMS BEFORE DOING ANY WORK.



5
E4.1
VERIFY EXACT ROUGH-IN REQUIREMENTS WITH IT/SECURITY CONTRACTOR BEFORE DOING ANY WORK. N.T.S.

F.A. LEGEND

- ☐ 15 STROBE, NUMBER DENOTES 'cd' RATING
- ☐ 15 HORN/STROBE, NUMBER DENOTES 'cd' RATING
- ☐ PULL STATION WITH STOPPER
- ☐ SMOKE DETECTOR
- ☐ HEAT DETECTOR
- ☐ DUCT/SMOKE DETECTOR WITH REMOTE INDICATOR
- ☐ FARA FIRE ALARM REMOTE ANNUNCIATOR
- ☐ FACP FIRE ALARM CONTROL PANEL WITH DIGITAL NOTIFIER

F.A. NOTES

- FIRE ALARM INSTALLER TO INSTALL SYSTEM TO MEET ALL NATIONAL AND LOCAL FIRE CODES. INSTALLER TO SUBMIT TO ARCHITECT "AS BUILT"
- FIRE ALARM INSTALLER TO COORDINATE AND CONNECT SMOKE DETECTION SYSTEM TO A/C DUCT SYSTEM.
- FIRE ALARM INSTALLER CAN SUBSTITUTE FIRE ALARM FIXTURES FOR OTHERS OF EQUAL PERFORMANCE.
- F.A. INSTALLER MUST BE CERTIFIED BY THE STATE AND SUBMIT ALL REQUIRED PLANS AND DRAWINGS, F.A. SYSTEM CALCULATIONS AND ALL APPLICABLE SUBMITTALS TO THE GOVERNING AUTHORITIES TO OBTAIN A PERMIT.
- THE F.A. INSTALLER MUST BID ON A COMPLETE F.A. SYSTEM THAT COMFORMS TO ALL APPLICABLE CODES.
- FIRE ALARM PANEL MUST HAVE PHONE DIALER AND BE CONNECTED TO PHONE SYSTEM.

Branch Panel: MDP

Location: ELEC. 87
Supply From: Main Disconnect
Mounting: Surface
Enclosure: Type 1

Volts: 480/277 Wye
Phases: 3
Wires: 4

A.I.C. Rating: 14 KAIC
Mains Type: MCB
Mains Rating: 400 A
MCB Rating: 400 A

Notes:

Table with columns: CKT, Circuit Description, Trip, Poles, A, B, C, Poles, Trip, Circuit Description, CKT. Includes items like 45KVA TRANSFORMER 'TLA2', 480-120/208V, 3PH 4W.

Legend:

Load Classification table with columns: Connected Load, Demand Factor, Estimated Demand, Panel Totals. Includes HVAC, Receptacle, Lighting, Power.

Notes:

Branch Panel: HA

Location: ELEC. 87
Supply From: Panel 'MDP'
Mounting: Surface
Enclosure: Type 1

Volts: 480/277 Wye
Phases: 3
Wires: 4

A.I.C. Rating: 14 KAIC
Mains Type: MLO
Mains Rating: 225 A
MCB Rating: MLO

Notes:

Table with columns: CKT, Circuit Description, Trip, Poles, A, B, C, Poles, Trip, Circuit Description, CKT. Includes items like BUILDING SIGN (CANOPY), EXTERIOR LIGHTING, PARKING LIGHTING.

Legend:

Load Classification table with columns: Connected Load, Demand Factor, Estimated Demand, Panel Totals. Includes HVAC, Lighting.

Notes:

Branch Panel: HB

Location: ELEC. 9
Supply From: Panel 'MDP'
Mounting: Surface
Enclosure: Type 1

Volts: 480/277 Wye
Phases: 3
Wires: 4

A.I.C. Rating: 14 KAIC
Mains Type: MLO
Mains Rating: 225 A
MCB Rating: MLO

Notes:

Table with columns: CKT, Circuit Description, Trip, Poles, A, B, C, Poles, Trip, Circuit Description, CKT. Includes items like PARKING LIGHTING, EXTERIOR LIGHTING, LIGHTING SECTION 'A'.

Legend:

Load Classification table with columns: Connected Load, Demand Factor, Estimated Demand, Panel Totals. Includes HVAC, Receptacle, Lighting, Power.

Notes:

Branch Panel: LA

Location: ELEC. 87
Supply From: Transformer 'TLA'
Mounting: Surface
Enclosure: Type 1

Volts: 120/208 Wye
Phases: 3
Wires: 4

A.I.C. Rating: 10 KAIC
Mains Type: MCB
Mains Rating: 225 A
MCB Rating: 200 A

Notes:

Table with columns: CKT, Circuit Description, Trip, Poles, A, B, C, Poles, Trip, Circuit Description, CKT. Includes items like FIRE ALARM CONNECTIONS, LOBBY 63 EWC, CU-1 DISCONNECT.

Legend:

Load Classification table with columns: Connected Load, Demand Factor, Estimated Demand, Panel Totals. Includes HVAC, Receptacle, Power.

Notes:

Branch Panel: LA1

Location: ELEC. 87
Supply From: Panel 'LA'
Mounting: Surface
Enclosure: Type 1

Volts: 120/208 Wye
Phases: 3
Wires: 4

A.I.C. Rating: 10 KAIC
Mains Type: MLO
Mains Rating: 125 A
MCB Rating: MLO

Notes:

Table with columns: CKT, Circuit Description, Trip, Poles, A, B, C, Poles, Trip, Circuit Description, CKT. Includes items like EVIDENCE CABINET CONNECTIONS, FUME HOOD CONNECTIONS, R.R. 76 OUTLET.

Legend:

Load Classification table with columns: Connected Load, Demand Factor, Estimated Demand, Panel Totals. Includes Receptacle, Power.

Notes:

Branch Panel: LA2

Location: ELEC. 87
Supply From: Transformer 'TLA2'
Mounting: Surface
Enclosure: Type 1

Volts: 120/208 Wye
Phases: 3
Wires: 4

A.I.C. Rating: 10 KAIC
Mains Type: MCB
Mains Rating: 125 A
MCB Rating: 125 A MCB

Notes:

Table with columns: CKT, Circuit Description, Trip, Poles, A, B, C, Poles, Trip, Circuit Description, CKT. Includes items like CORRIDOR 42 EWC, SUPPLY/PRINTER OUTLETS, PATROL WRITING 45 OUTLETS.

Legend:

Load Classification table with columns: Connected Load, Demand Factor, Estimated Demand, Panel Totals. Includes Receptacle, Power.

Notes:



211 N. Florence, Ste. 204
El Paso, TX 79901
Tel. (915) 533-0323
Fax. (915) 533-0332

www.exigoarch.com

HORIZON CITY MUNICIPAL FACILITIES PHASE 1 ISSUED FOR PERMIT AND BIDDING

Project Number

Consultants:



12/03/2020

Drawing Date: 12/03/2020
Drawn: E.H.
Checked: F.P./F.O
Scale: AS SHOWN

Revisions:

Table with columns: No., Description, Date. Includes REVISION 1 04/23/21, ASI #007 11/12/25.

DRAWING COORDINATION

ARCHITECTURAL, CIVIL, MECHANICAL, STRUCTURAL, ELECTRICAL, AND LANDSCAPING DRAWINGS ARE INTERRELATED. GENERAL CONTRACTOR AND ALL SUBCONTRACTORS SHALL REVIEW AND COORDINATE THE ENTIRE SET OF DRAWINGS AND PROJECT MANUAL.

PANEL SCHEDULES

E6.0R2



C:\Users\alpha1\Documents\11.12.25.ASI #007 RVT_XL_fradilla@alpha-engr.com.txt SHEET: 24X36 11/13/2025 12:18:31 PM

C:\Users\alpha1\Documents\11.12.25 ASI #007 RVT 24_Tpadilla@alpha-engr.com.ct
SHEET: 24X36 11/13/2025 12:18:37 PM

Branch Panel: LB

Location: ELEC. 9
Supply From: Transforme' TLB'
Mounting: Surface
Enclosure: Type 1

Volts: 120/208 Wye
Phases: 3
Wires: 4

A.I.C. Rating: 10 KAIC
Mains Type: MCB
Mains Rating: 125 A
MCB Rating: 125 A MCB

Notes:

CKT	Circuit Description	Trip	Poles	A	B	C	Poles	Trip	Circuit Description	CKT
1	LOBBY 15 EWC	20 A	1	180 VA	1260 VA			20 A	JURY RM 3 OUTLETS	2
3	CLERKS 18 OUTLETS	20 A	1		360 VA	720 VA		20 A	BACK FLOW PREVENTOR	4
5	METAL DETECTOR CONNECTIONS	20 A	1			500 VA	720 VA	20 A	COURTROOM FLOORBOXES	6
7	RECEPTION 12 OUTLETS	20 A	1	1260 VA	2400 VA			20 A	CONFERENCE 8 FLOORBOX	8
9	COURTROOM FLOORBOXES	20 A	1		720 VA	1778 VA		25 A	CU-1 DISCONNECT	10
11	R.R. 5 & 6 OUTLETS	20 A	1			360 VA	1778 VA	20 A	CORRIDOR 91 OUTLETS	12
13	JURY RM 3 FLOORBOXES	20 A	1	4800 VA	360 VA			20 A	POWER TO GATE OPERATOR	14
15	IDF 136 OUTLETS	20 A	1		360 VA	500 VA		20 A	POWER TO GATE OPERATOR	16
17	POWER TO GATE OPERATOR	20 A	1			500 VA	720 VA	20 A	LOBBY 15 OUTLETS	18
19	POWER TO GATE OPERATOR	20 A	1	500 VA	540 VA			20 A	RECEPTION 12 OUTLETS	20
21	R.R. 13 & 14 OUTLETS	20 A	1		540 VA	720 VA		20 A	LOBBY 15 OUTLETS	22
23	RECEPTION 12 OUTLETS	20 A	1			720 VA	720 VA	20 A	CLERKS 18 OUTLETS	24
25	ROOF OUTLETS	20 A	1	540 VA	720 VA			20 A	CASHIERS 17 OUTLETS	26
27	IDF 136 OUTLETS	20 A	1		720 VA	720 VA		20 A	MEDIA RM 22 OUTLETS	28
29	CLERKS 18 OUTLETS	20 A	1			720 VA	900 VA	20 A	COURTROOM OUTLETS	30
31	CASHIERS 17 OUTLETS	20 A	1	720 VA	900 VA			20 A	OFFICE 10 OUTLETS	32
33	FILE RM 19 OUTLETS	20 A	1		900 VA	1080 VA		20 A	COURTROOM OUTLETS	34
35	OFFICE 11 OUTLETS	20 A	1			1080 VA	1080 VA	20 A	COURTROOM OUTLETS	36
37	JUDGES CHAMBER 2 OUTLETS	20 A	1	1080 VA	1080 VA			20 A	COURTROOM OUTLETS	38
39	COURTROOM OUTLETS	20 A	1		1080 VA	1080 VA		20 A	CONFERENCE 8 OUTLETS	40
41	COURT CLERK 21 OUTLETS	20 A	1	1080 VA				1	Space	42
43	ATTORNEY SUITE 7 OUTLETS	20 A	1	1080 VA				1	Space	44
45	Space	--	1	--	--	--	--	1	Space	46
47	Space	--	1	--	--	--	--	1	Space	48
49	Space	--	1	--	--	--	--	1	Space	50
51	Space	--	1	--	--	--	--	1	Space	52
53	Space	--	1	--	--	--	--	1	Space	54

Legend:

Load Classification	Connected Load	Demand Factor	Estimated Demand	Panel Totals
HVAC	3556 VA	100.00%	3556 VA	
Receptacle	45540 VA	45.37%	20662 VA	Total Conn. Load: 52536 VA
Power	3440 VA	30.00%	1032 VA	Total Est. Demand: 25250 VA
				Total Conn.: 146 A
				Total Est. Demand: 70 A

Notes:

Branch Panel: EM

Location: ELEC. 87
Supply From: UPS
Mounting: Surface
Enclosure: Type 1

Volts: 120/208 Wye
Phases: 3
Wires: 4

A.I.C. Rating: 10 KAIC
Mains Type: MCB
Mains Rating: 125 A
MCB Rating: MLO

Notes:

CKT	Circuit Description	Trip	Poles	A	B	C	Poles	Trip	Circuit Description	CKT
1	IT SERVER 127 OUTLET	20 A	1	360 VA	500 VA			20 A	110V ANTENNA RECEPTACLE	2
3	WATER HEATER POWER	20 A	1		750 VA	250 VA		2	30 A RADIO COMM 54 2 POLE OUTLET	4
5	DISPATCH FLOORBOX	20 A	1			2400 VA	250 VA	20 A	RADIO COMM 54 OUTLET	6
7	IT SERVER 127 OUTLET	20 A	2	250 VA	1650 VA			2	40 A 220V ANTENNA RECEPTACLE	8
9	IT SERVER 127 OUTLET	20 A	2		250 VA	1650 VA		2	20 A RADIO COMM 54 OUTLET	10
11	RADIO COMM 54 OUTLET	20 A	1			360 VA	360 VA	1	IT SERVER 127 OUTLET	12
13	RADIO COMM 54 OUTLET	20 A	1	360 VA	360 VA			1	RADIO COMM 54 OUTLET	14
15	RADIO COMM 54 OUTLET	20 A	1		720 VA	720 VA		1	RADIO COMM 54 OUTLET	16
17	IT SERVER 127 OUTLET	20 A	1			360 VA	800 VA	2	DISPATCH CONNECTIONS	18
19	IT SERVER 127 OUTLET	20 A	1	360 VA	800 VA			2	20 A DISPATCH CONNECTIONS	20
21	IT SERVER 127 OUTLET	20 A	1		360 VA	800 VA		2	20 A DISPATCH CONNECTIONS	22
23	DISPATCH CONNECTIONS	20 A	2			800 VA	800 VA	2	20 A DISPATCH CONNECTIONS	24
25	DISPATCH CONNECTIONS	20 A	2	800 VA	800 VA			2	60 A RADIO RM CKT 1	26
27	DISPATCH CONNECTIONS	20 A	2			800 VA	4800 VA	1	60 A RADIO RM CKT 2	28
29	DISPATCH CONNECTIONS	20 A	2	800 VA	4800 VA			1	Space	30
31	DISPATCH CONNECTIONS	20 A	2	800 VA	4800 VA			1	Space	32
33	DISPATCH CONNECTIONS	20 A	2	800 VA	4800 VA			1	Space	34
35	Space	--	1	--	--	--	--	1	Space	36
37	Space	--	1	--	--	--	--	1	Space	38
39	Space	--	1	--	--	--	--	1	Space	40
41	Space	--	1	--	--	--	--	1	Space	42

Legend:

Load Classification	Connected Load	Demand Factor	Estimated Demand	Panel Totals
Receptacle	7220 VA	100.00%	7220 VA	
Power	24250 VA	30.00%	7275 VA	Total Conn. Load: 31470 VA
				Total Est. Demand: 14495 VA
				Total Conn.: 87 A
				Total Est. Demand: 40 A

Notes:

COMcheck Software Version 4.0.2.0 Interior Lighting Compliance Certificate

Project Information
Energy Code: 2015 IECC
Project Title: New Construction
Project Type:

Construction Site: Owner/Agent Designer/Contractor:

Additional Efficiency Package
Unspecified

Allowed Interior Lighting Power

Area Category	B Floor Area (ft ²)	C Allowed Watts / ft ²	D Allowed Watts (B X C)
1-HORIZON FACILITIES (Police)	20248	0.87	17616
Total Allowed Watts =			17616

Proposed Interior Lighting Power

Fixture ID : Description / Lamp / Wattage Per Lamp / Ballast	A Lamps/ Fixture	B # of Fixtures	C Fixture Watt.	D E (C X D)
1-HORIZON FACILITIES (Police)				
FIXT. TYPE A: Other	1	126	37	4662
FIXT. TYPE B: Other	1	76	32	2432
FIXT. TYPE C: Other	1	40	21	840
FIXT. TYPE D: Other	1	4	27	108
FIXT. TYPE D1: Other	1	2	81	162
FIXT. TYPE D2: Other	1	3	96	288
FIXT. TYPE F: Other	1	24	40	960
FIXT. TYPE H: Other	1	20	67	1340
FIXT. TYPE L: Other	1	25	33	825
FIXT. TYPE Q: Other	1	22	11	242
FIXT. TYPE Q1: Other	1	9	35	315
Total Proposed Watts =			12178	

Interior Lighting PASSES: Design 31% better than code

Interior Lighting Compliance Statement

Compliance Statement: The proposed interior lighting design represented in this document is consistent with the building plans, specifications, and other calculations submitted with this permit application. The proposed interior lighting systems have been designed to meet the 2015 IECC requirements in COMcheck Version 4.0.2.0 and to comply with the mandatory requirements listed in the Inspection Checklist.

Name - Title Signature Date

Project Title: N:\2020-DWG\2034_Horizon City Facilities\COMCHECK\COMCHECK.cck Report date: 12/03/20
Data filename: N:\2020-DWG\2034_Horizon City Facilities\COMCHECK\COMCHECK.cck Page: 1 of 8

COMcheck Software Version 4.0.2.0 Exterior Lighting Compliance Certificate

Project Information
Energy Code: 2015 IECC
Project Title:
Project Type: New Construction
Exterior Lighting Zone: 4 (High activity metropolitan commercial district)

Construction Site: Owner/Agent Designer/Contractor:

Allowed Exterior Lighting Power

Area/Surface Category	B Quantity	C Allowed Watts / Unit	D Tradeable Wattage	E Allowed Watts (B X C)
CANOPY (Entry canopy)	1375 ft ²	0.4	Yes	550
EXTERIOR WALL (Illuminated area of facade wall or surface)	1615 ft ²	0.2	No	323
EXTERIOR WALL (Illuminated area of facade wall or surface)	1672 ft ²	0.2	No	334
REAR CANOPY (Driveway)	995 ft ²	0.13	Yes	129
EXTERIOR WALL (Illuminated area of facade wall or surface)	950 ft ²	0.2	No	190
EXTERIOR WALL (Illuminated area of facade wall or surface)	722 ft ²	0.2	No	144
EXTERIOR WALL (Illuminated area of facade wall or surface)	1368 ft ²	0.2	No	274
EXTERIOR WALL (Illuminated area of facade wall or surface)	1368 ft ²	0.2	No	274
CANOPY (Entry canopy)	648 ft ²	0.4	Yes	259
EXTERIOR WALL (Illuminated area of facade wall or surface)	1026 ft ²	0.2	No	205
EXTERIOR WALL (Illuminated area of facade wall or surface)	513 ft ²	0.2	No	103
EXTERIOR WALL (Illuminated area of facade wall or surface)	342 ft ²	0.2	No	68
EXTERIOR WALL (Illuminated area of facade wall or surface)	350 ft ²	0.2	No	70
Total Tradeable Watts (a) =			1019	
Total Allowed Watts =			3004	
Total Allowed Supplemental Watts (b) =			1300	

(a) Wattage tradeoffs are only allowed between tradeable areas/surfaces.
(b) A supplemental allowance equal to 1300 watts may be applied toward compliance of both non-tradeable and tradeable areas/surfaces.

Proposed Exterior Lighting Power

Fixture ID : Description / Lamp / Wattage Per Lamp / Ballast	A Lamps/ Fixture	B # of Fixtures	C Fixture Watt.	D E (C X D)
CANOPY (Entry canopy 1375 ft ²): Tradeable Wattage				
FIXT. TYPE M1: Other	1	5	50	250
FIXT. TYPE M2: Other	1	5	80	400
EXTERIOR WALL (Illuminated area of facade wall or surface 1615 ft ²): Non-tradeable Wattage				
FIXT. TYPE K: Other	1	3	80	240
EXTERIOR WALL (Illuminated area of facade wall or surface 1672 ft ²): Non-tradeable Wattage				
FIXT. TYPE K: Other	1	3	80	240
REAR CANOPY (Driveway 995 ft ²): Tradeable Wattage				
FIXT. TYPE M: Other	1	8	80	640
EXTERIOR WALL (Illuminated area of facade wall or surface 950 ft ²): Non-tradeable Wattage				

Project Title: N:\2020-DWG\2034_Horizon City Facilities\COMCHECK\COMCHECK.cck Report date: 12/03/20
Data filename: N:\2020-DWG\2034_Horizon City Facilities\COMCHECK\COMCHECK.cck Page: 2 of 8

Fixture ID : Description / Lamp / Wattage Per Lamp / Ballast	B Lamps/ Fixture	C # of Fixtures	D Fixture Watt.	E (C X D)
FIXT. TYPE K: Other	1	2	80	160
EXTERIOR WALL (Illuminated area of facade wall or surface 722 ft ²): Non-tradeable Wattage				
FIXT. TYPE K: Other	1	1	80	80
EXTERIOR WALL (Illuminated area of facade wall or surface 1368 ft ²): Non-tradeable Wattage				
FIXT. TYPE K: Other	1	2	80	160
FIXT. TYPE K: Other	1	3	80	240
CANOPY (Entry canopy 648 ft ²): Tradeable Wattage				
FIXT. TYPE M1: Other	1	6	50	300
EXTERIOR WALL (Illuminated area of facade wall or surface 1026 ft ²): Non-tradeable Wattage				
FIXT. TYPE K: Other	1	2	80	160
EXTERIOR WALL (Illuminated area of facade wall or surface 513 ft ²): Non-tradeable Wattage				
FIXT. TYPE K: Other	1	1	80	80
EXTERIOR WALL (Illuminated area of facade wall or surface 342 ft ²): Non-tradeable Wattage				
FIXT. TYPE K: Other	1	1	80	80
EXTERIOR WALL (Illuminated area of facade wall or surface 350 ft ²): Non-tradeable Wattage				
FIXT. TYPE K: Other	1	1	80	80
Total Tradeable Proposed Watts =				1590

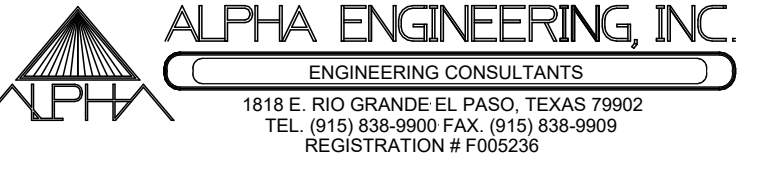
Exterior Lighting PASSES: Design 31% better than code

Exterior Lighting Compliance Statement

Compliance Statement: The proposed exterior lighting design represented in this document is consistent with the building plans, specifications, and other calculations submitted with this permit application. The proposed exterior lighting systems have been designed to meet the 2015 IECC requirements in COMcheck Version 4.0.2.0 and to comply with the mandatory requirements listed in the Inspection Checklist.

Name - Title Signature Date

Project Title: N:\2020-DWG\2034_Horizon City Facilities\COMCHECK\COMCHECK.cck Report date: 12/03/20
Data filename: N:\2020-DWG\2034_Horizon City Facilities\COMCHECK\COMCHECK.cck Page: 3 of 8



exigo ARCHITECTURE INSPIRED BY PURPOSE

211 N. Florence, Ste. 204
El Paso, TX 79901

Tel. (915) 533-0323
Fax. (915) 533-0332

www.exigoarch.com

HORIZON CITY
MUNICIPAL FACILITIES
PHASE 1 ISSUED FOR
PERMIT AND BIDDING

Project Number

Consultants:

12/03/2020

Drawing Date: 12/03/2020
Drawn: E.H.
Checked: F.P./F.O
Scale: AS SHOWN

Revisions:

No.	Description	Date
4	ASI #007	11/12/25

DRAWING COORDINATION

ARCHITECTURAL, CIVIL, MECHANICAL,
STRUCTURAL, ELECTRICAL, AND
LANDSCAPING DRAWINGS ARE
INTERRELATED. GENERAL CONTRACTOR
AND ALL SUBCONTRACTORS SHALL REVIEW
AND COORDINATE THE ENTIRE SET OF
DRAWINGS AND PROJECT MANUAL.

PANEL
SCHEDULES

E6.1R1