

Route Changes 2025 Fall

Stall 1: Mink Creek route remains the same, going from the bottom of Hwy 36 to mile post 13, This Route also has a town stop at the fairgrounds in Preston.

Stall 2: This Route includes Treasureton Rd. and a portion of Hwy 34 with a few stops on 800 E , east on 100 S. and Oneida in Preston.

Stall 3: Riverdale route will begin at the end of East Riverdale Road turning around at the intersection of East Riverdale Rd and Station Cr Rd. The route will then proceed down Riverdale Road to include all the students on the west side of the highway near the resort. The route will then go up behind Glendale reservoir near the landfill to pick up those students. After which it will proceed to the schools for drop off.

Stall 4: This route will turn around on Glendale Rd near Worm Cr Rd. It will then proceed down and across Whitney and loop around 2600 E and 1800 E also picking students up on 1600 E then to the highway at Whitney. Picking up students on 1200 E. He will then drop at the high school then back to the walkway

Stall 5: This route will remain unchanged with turnaround spots in Banida at Reyes Dairy, 6998 N 1200 W, and on Hot Springs Rd. It will then be delivered to the high school. He will end at the walkway

Stall 6: This route will continue as last year with one turn around at the end of 1400 W, it will also have a town stop at 244 W 1st N. We will continue to monitor the townhouse situation as needed.

Stall 7: Picks up South State and makes a loop around 5600 South to 4800 South and then to a town stop located on 100 S 175 W then to the schools.

Stall 8: This route starts at 3200 S then proceeds to 3600 S then to 4000 S looping around on 1600 W back to 3200 S. to 800 W to 2000 S. then 600 W. to 800 S. turning at 200 W to 200 S. and then to the schools.

Stall 9: This route starts at 3200 S proceeds to 800 W to 4800 S then to 1400 W to 4000 S around the loop on 1600 W. back up 3200 S to 800 W. then north towards 2000 S then north on 600 W towards Preston and then to the schools.

Stall 10: This route starts at Parkinson Road to Franklin then to HWY 91 turning back west on 4800 S to 800 E then south to the border turning around and then back north on 800 E to Preston.

Stall 11: This route will pick up as last year with the addition of students in Franklin living on 1st South and 2nd South. She will turn at 2nd East and drive to 2nd South and then loop around and pick up kids all the way to First East. She has one turn around on Cove Rd at the border. She will pick up the remainder of the kids in Franklin on 3rd East going North out of town. She will go up 2400 East and down 1600 South to pick up two additional stops.

Stall 12: Maple Creek route will pick up students all the way up Maple Creek Road. After going around the egg farm, it will pick up students on 2800 E before proceeding to town. He will drop off at high school and unload at walkway

Stall 13: Cub River route will turn around at Deer Cliff then pick up all students on Cub River Road towards town. We cannot get the residence to quit parking in the turnaround.

Stall 14: picking up the golf course and the north side of Preston on 800 N and to the trailer park on Sunrise and Sunset then back to State Street for one stop at 600 N state. This route has two town stops on 100 N near the hospital.

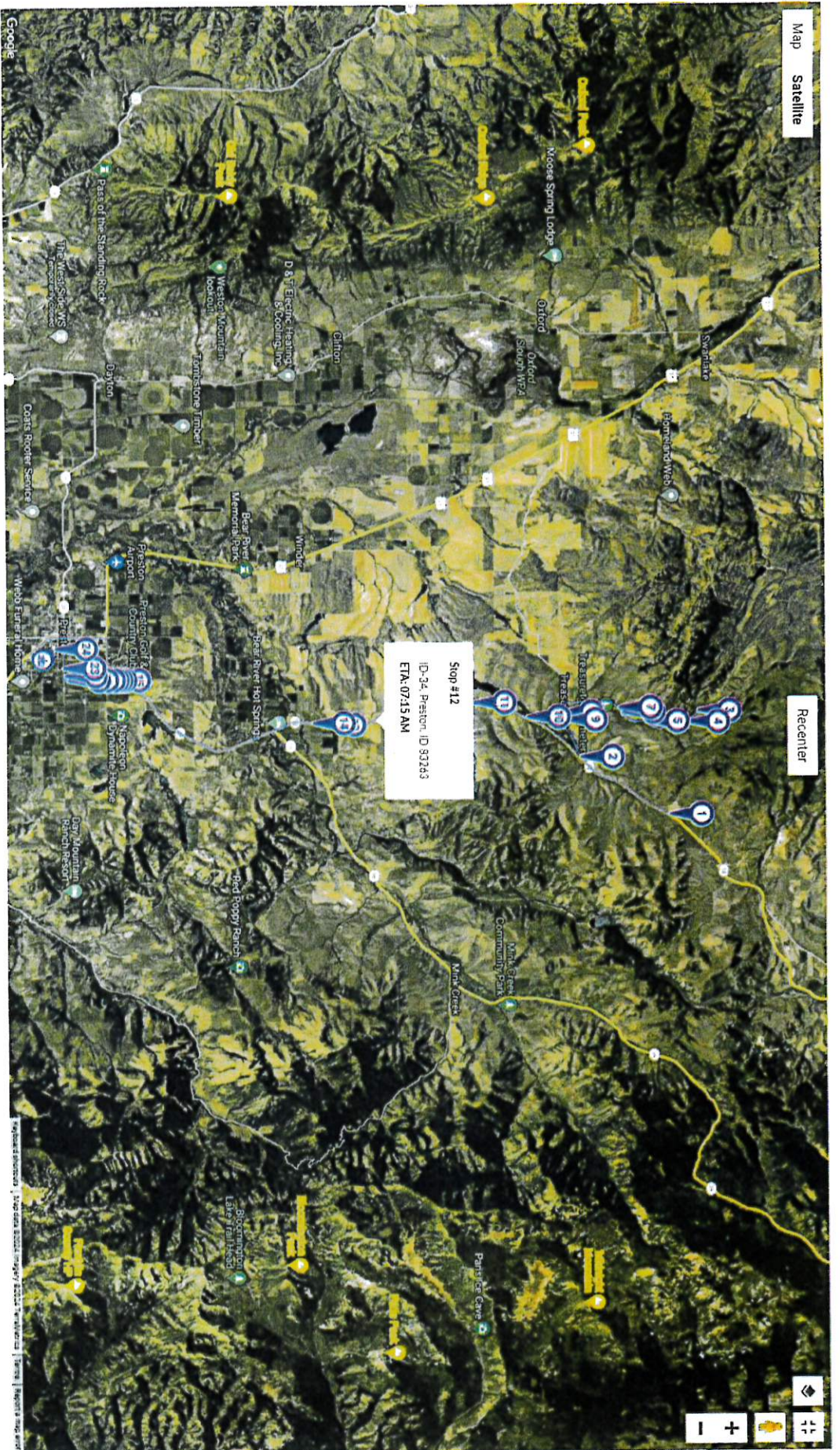
Stall 15: This route starts at 2400 East continues to Fords Bend then down 2200 E to Oneida to 800 E Continuing north to 400 N to 200 East then to the high school. Finishing at the walkway.

Stall 16: This bus picks up the Legacy students in Franklin. Then to 1200 E above the sewer plant, then to the high school drops off high school students then picks up a town stop at the library. Then to elementary schools.

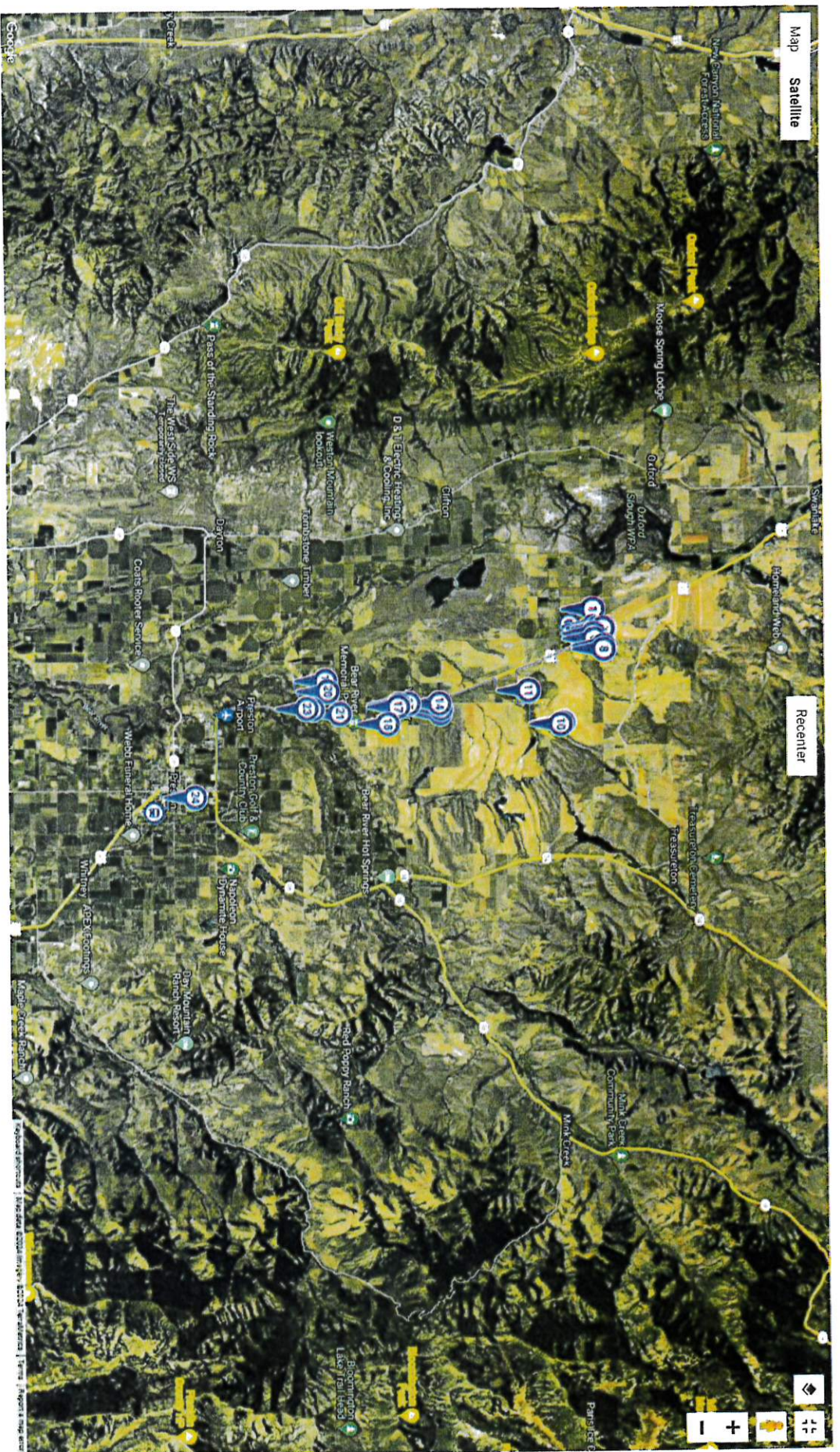
Stall 17: Starts at 3rd East and 2nd North then stops at 1st East and 2nd North then loops around to the Cedarwood apartments at 270 North and 2nd East and drops off a special needs student at the high school. Will then proceed to the walkway.

Stall 18: Starts at Valley View Drive and then to 1st East. Heading West on 5th South and then to South State Street. Going to 800 South and then over to 400 West. Heading north on 4th West up to 400 South. After picking up students at two stops on 400 South. Going to the walkway for drop off.

Stall 19: I would like to implement this route this year but have been short on drivers. If I'm able to implement it, it would just be current stops just relieving congestion on other buses.



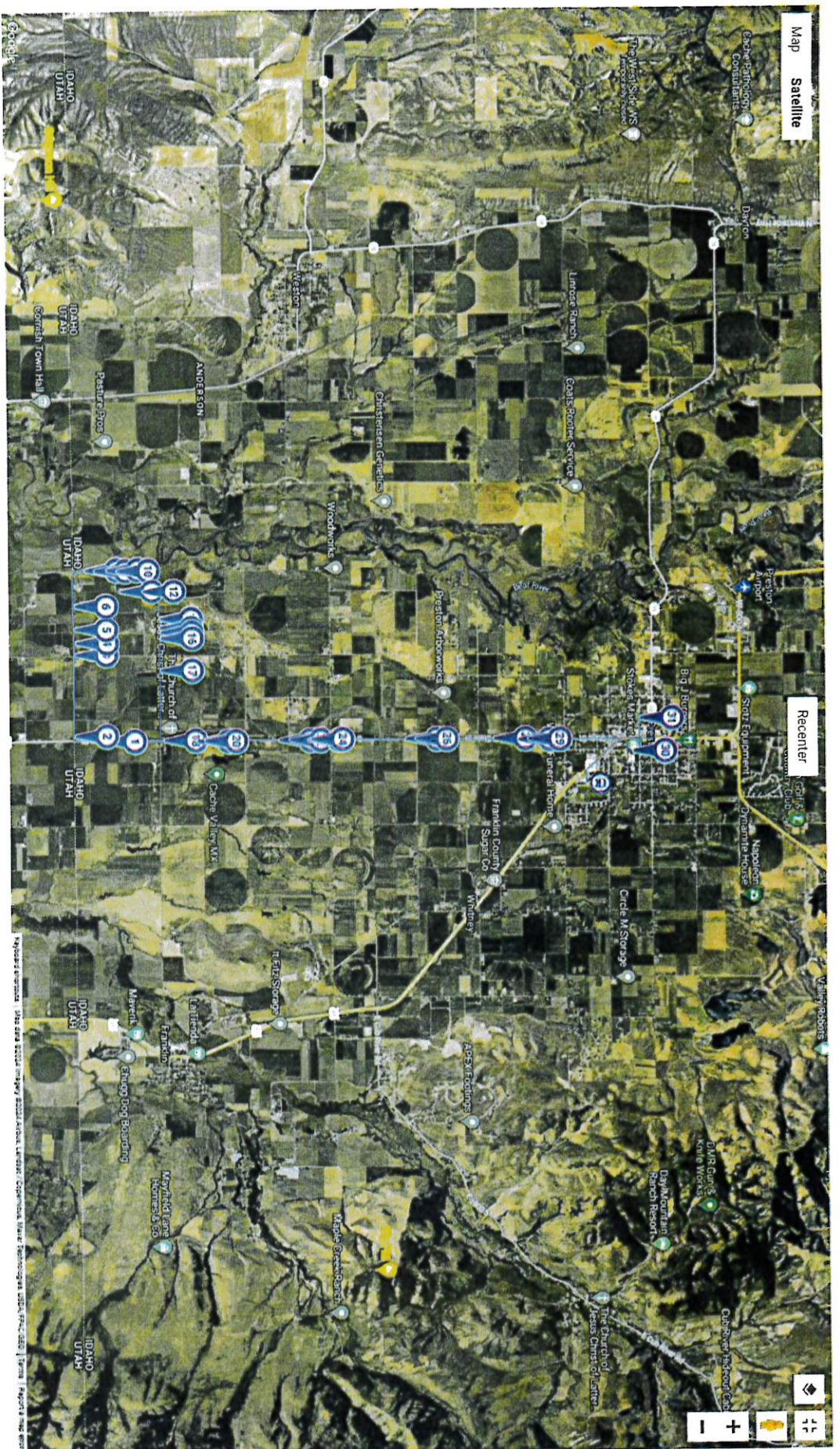
Route 2



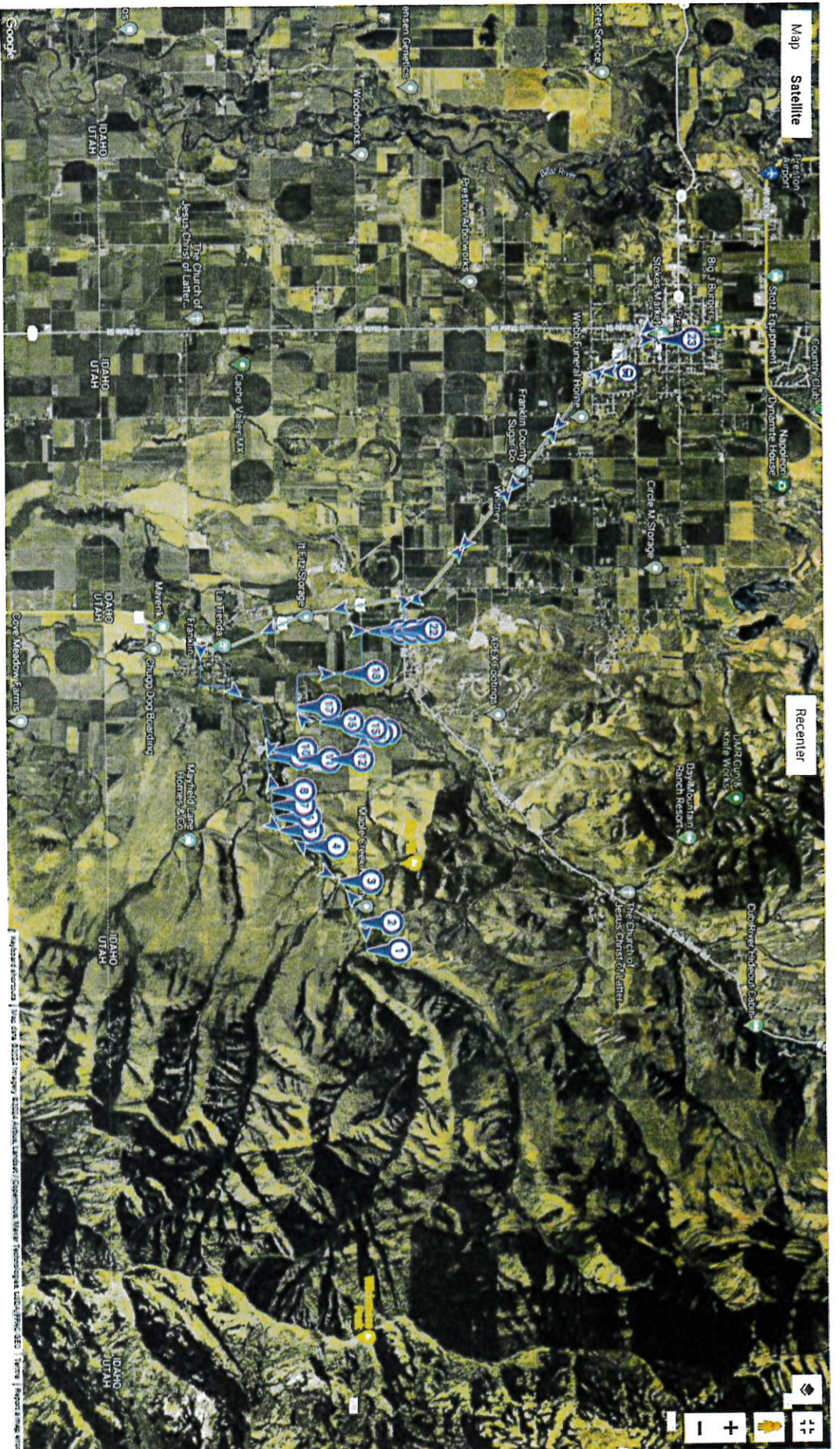
Route 5



Route 6



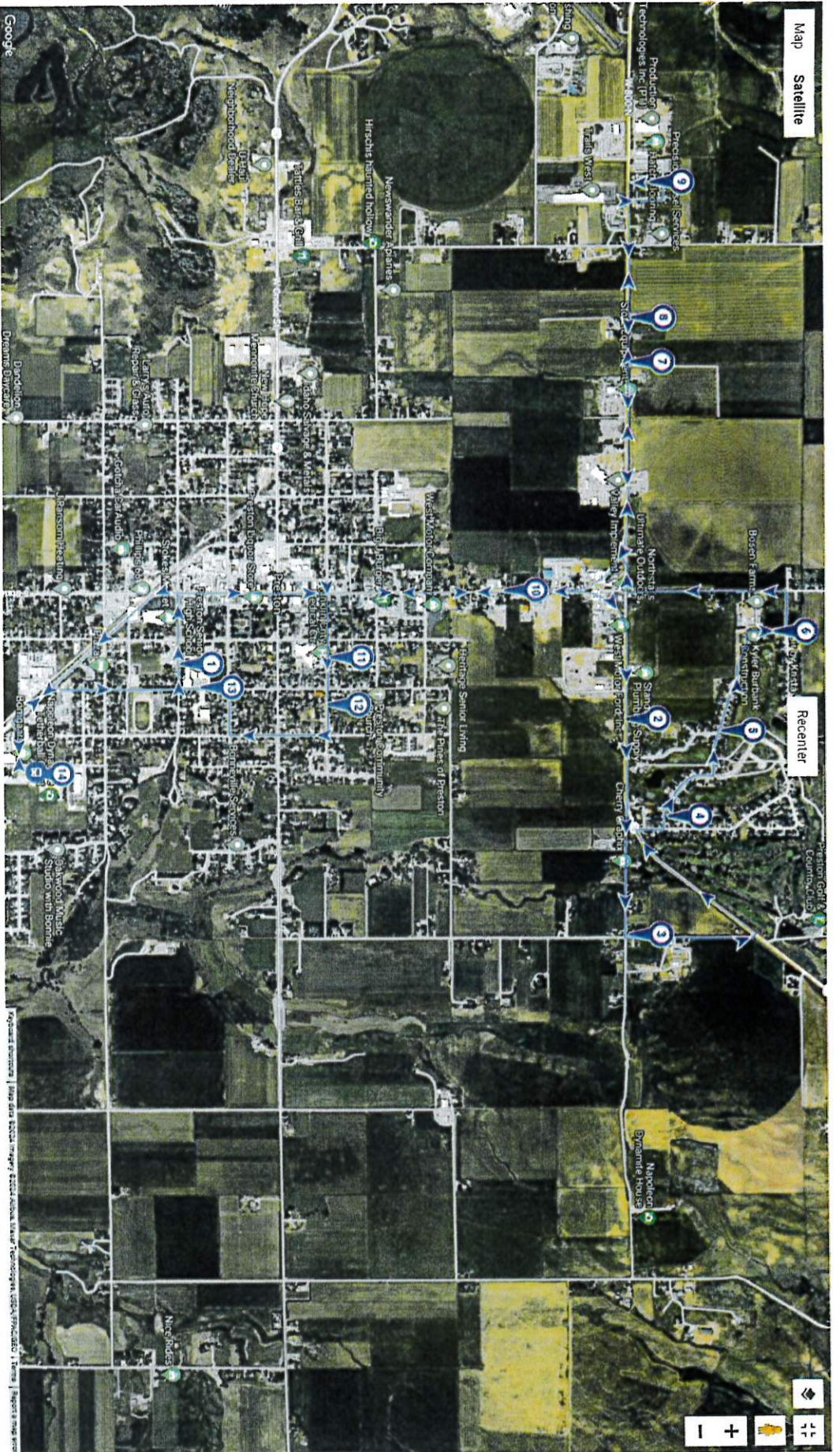
Route 7



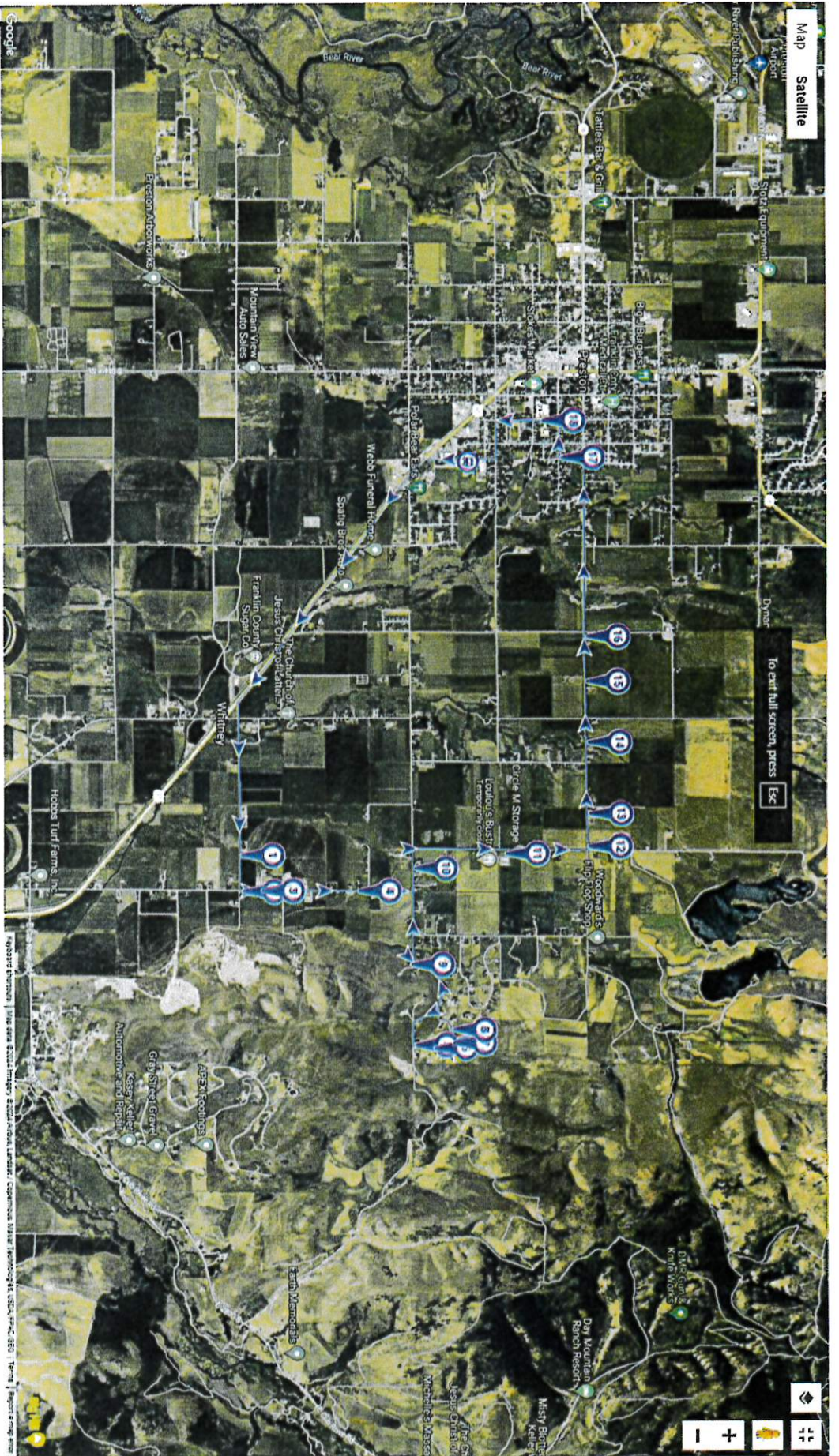
Route 12



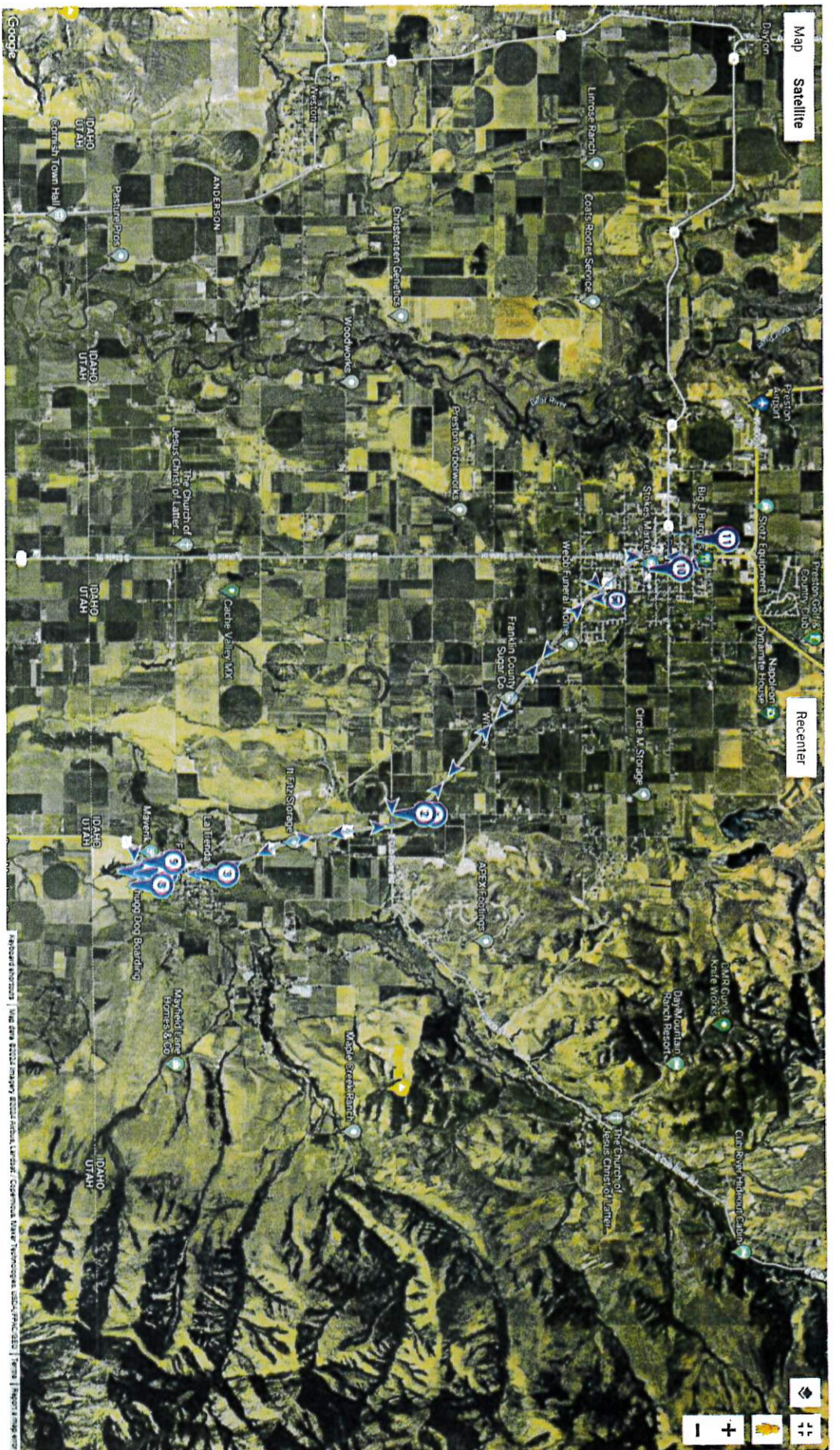
Route 13



Route 14



Route 15



Route 16



Route 18