



UNITED INDEPENDENT SCHOOL DISTRICT AGENDA ACTION ITEM

TOPIC: APPROVAL OF PROPOSED BOUNDARY CHANGES FOR SCHOOL YEAR 2011-2012 AND IMPLEMENTATION OF OPTION 1 OR OPTION 2

SUBMITTED BY: MIKE GARZA **OF:** EXECUTIVE DIRECTOR OF SUPPORT SERVICES

APPROVED FOR TRANSMITTAL TO SCHOOL BOARD: _____

DATE ASSIGNED FOR BOARD CONSIDERATION: March 28, 2011

RECOMMENDATION: Administration is recommending that the Board approve the boundary changes for the school year 2011-2012 as presented for Col. Santos Elem., Clark Elem., Nye Elem., Newman Elem., Fasken Elem., Kazen Elem., Finley Elem., Perez Elem., Prada Elem., Clark Middle and United Middle Schools.

Staff is also requesting approval for one of the following implementation options:

Option I: ALL STUDENTS AFFECTED BY THE BOUNDARY CHANGE RECOMMENDATION WILL BE TO MOVE TO THE NEW CAMPUS.

OPTION II: CURRENT THIRD AND FOURTH GRADE STUDENTS AFFECTED BY THE BOUNDARY CHANGES WOULD BE ALLOWED TO REMAIN AT THEIR CURRENT CAMPUS AS TRANSFER STUDENTS (NO TRANSPORTATION). ANY NEW STUDENTS IN THE AFFECTED ATTENDANCE BOUNDARY WOULD ATTEND THE NEW CAMPUS.

RATIONALE: To inform the board on potential boundary changes. The boundary changes are being proposed to provide efficient use of the district facilities.

BUDGETARY INFORMATION

N/A

BOARD POLICY REFERENCE AND COMPLIANCE

N/A



PROPOSED BOUNDARIES

PROPOSED BOUNDARY CHANGES BREAKDOWN ALL GRADES

OPTION 1

	Projected Enrollment 2011-2012	Student Adjustment	Adjusted Enrollment 2011-2012
CSBE	932	-48	884
Newman	563	48	611
	1495	0	1495
Fasken	1061	-121	940
Kazen	518	121	639
	1579	0	1579
Kazen	639	-13	626
Finley	551	13	564
	1190	0	1190
Nye	884	-18	866
Clark	548	18	566
	1432	0	1432
Perez	1031	-51	980
Prada	778	51	829
	1809	0	1809
United Middle	1059	-12	1047
Clark Middle	833	12	845
	1892	0	1892

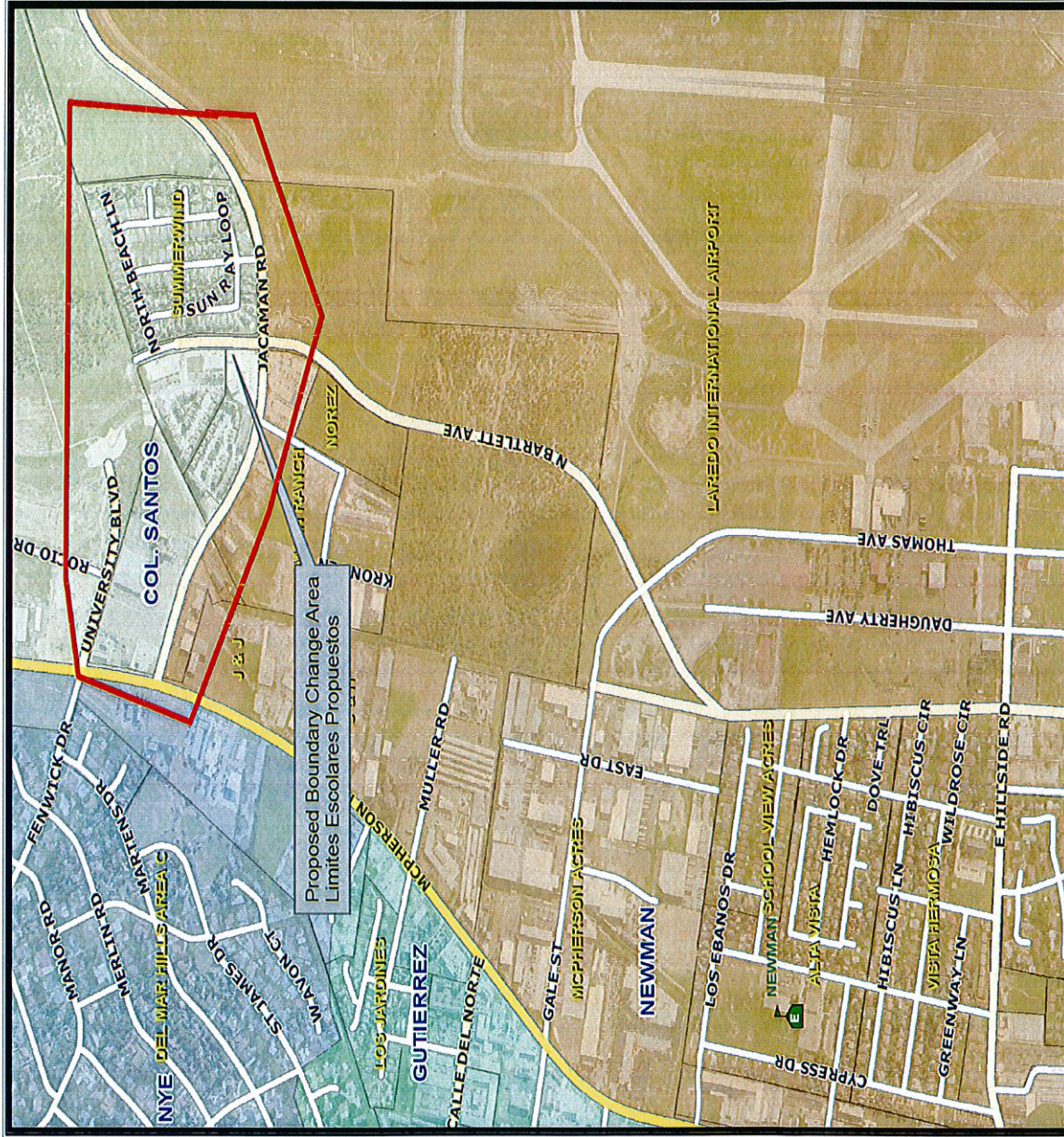
* 6th & 7th graders will not be affected

PROPOSED BOUNDARY CHANGES FOR CURRENT PRE-K THROUGH 2RD GRADE BREAKDOWN
OPTION 2

	Projected Enrollment 2011-2012	Student Adjustment	Adjusted Enrollment 2011-2012
CSBE	932	-34	898
Newman	563	34	597
	1495	0	1495
Fasken	1061	-71	990
Kazen	518	71	589
	1579	0	1579
Kazen	589	-13	576
Finley	551	13	564
	1140	0	1140
Nye	884	-8	876
Clark	548	8	556
	1432	0	1132
Perez	1031	-32	999
Prada	778	32	810
	1809	0	1809
United Middle	1059	-12	1047
Clark Middle	833	12	845
	1892	0	1892

* 6th & 7th graders will not be affected

2011-2012 Boundary Change for Col. Santos to Newman



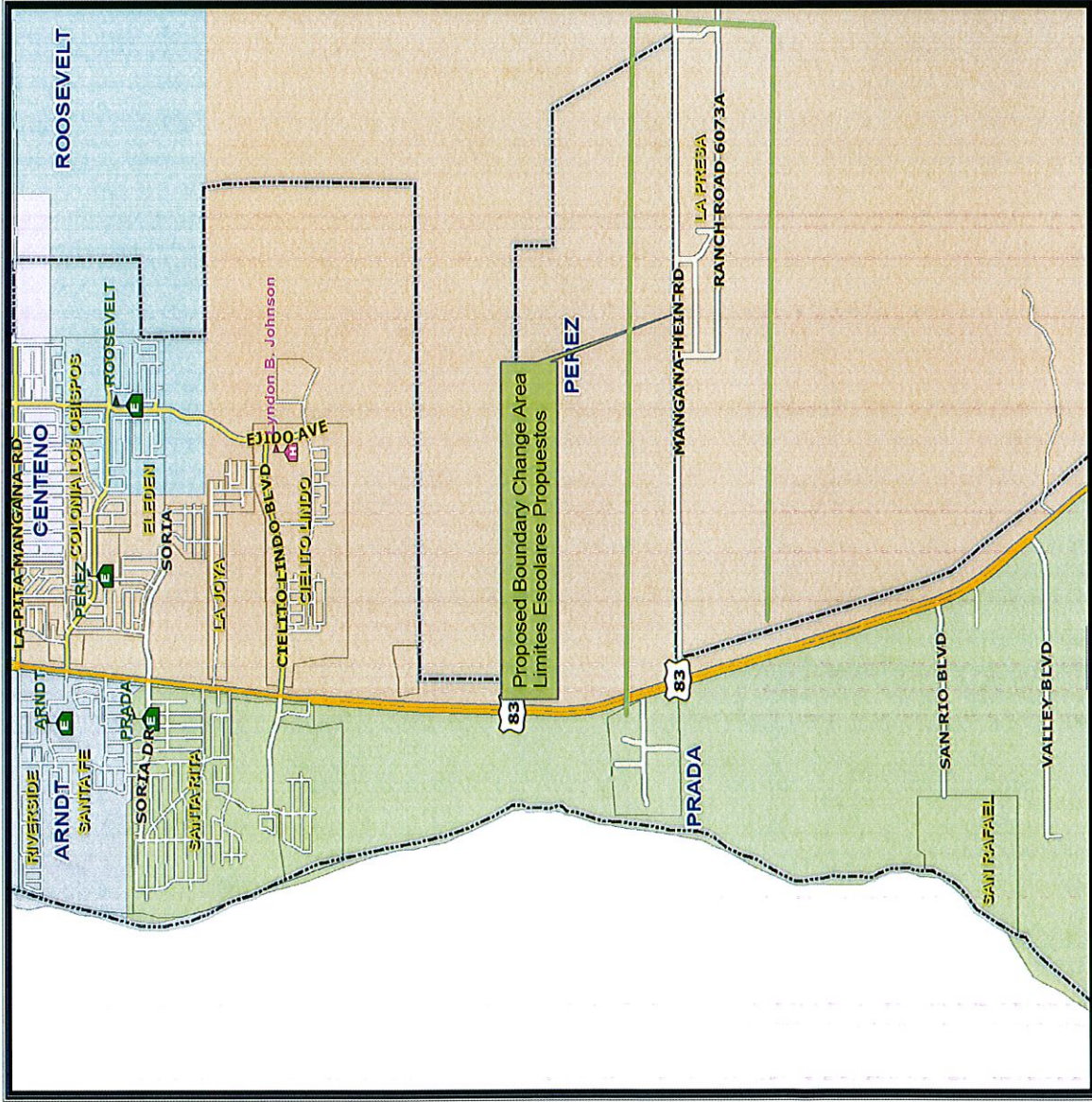
UNITED INDEPENDENT SCHOOL DISTRICT



This agency is not responsible for the misinterpretation of this map. This map does not meet national map accuracy standards and should not be used for engineering purposes.



2011-2012 Boundary Change for Perez to Prada Elementary



UNITED INDEPENDENT SCHOOL DISTRICT



This agency is not responsible for the misinterpretation of this map. This map does not meet national map accuracy standards and should not be used for engineering purposes.



2011-2012 Boundary Change for Kazen to Finley Elementary



Proposed Boundary Change Area
Limites Escolares Propuestos



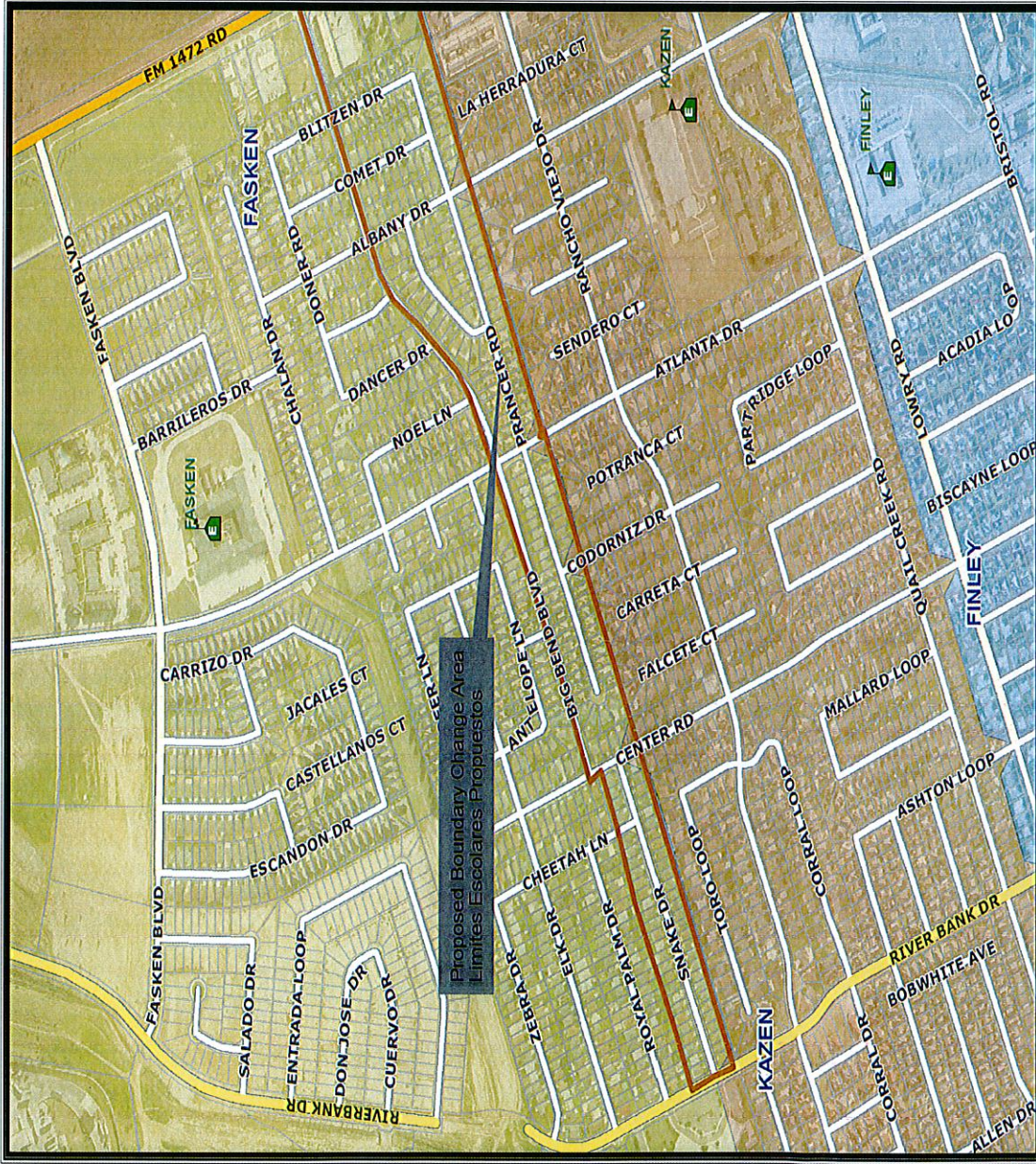
UNITED INDEPENDENT SCHOOL DISTRICT



This agency is not responsible for the misinterpretation of this map.
This map does not meet national map accuracy standards and
should not be used for engineering purposes.



2011-2012 Boundary Change for Fasken to Kazen Elementary

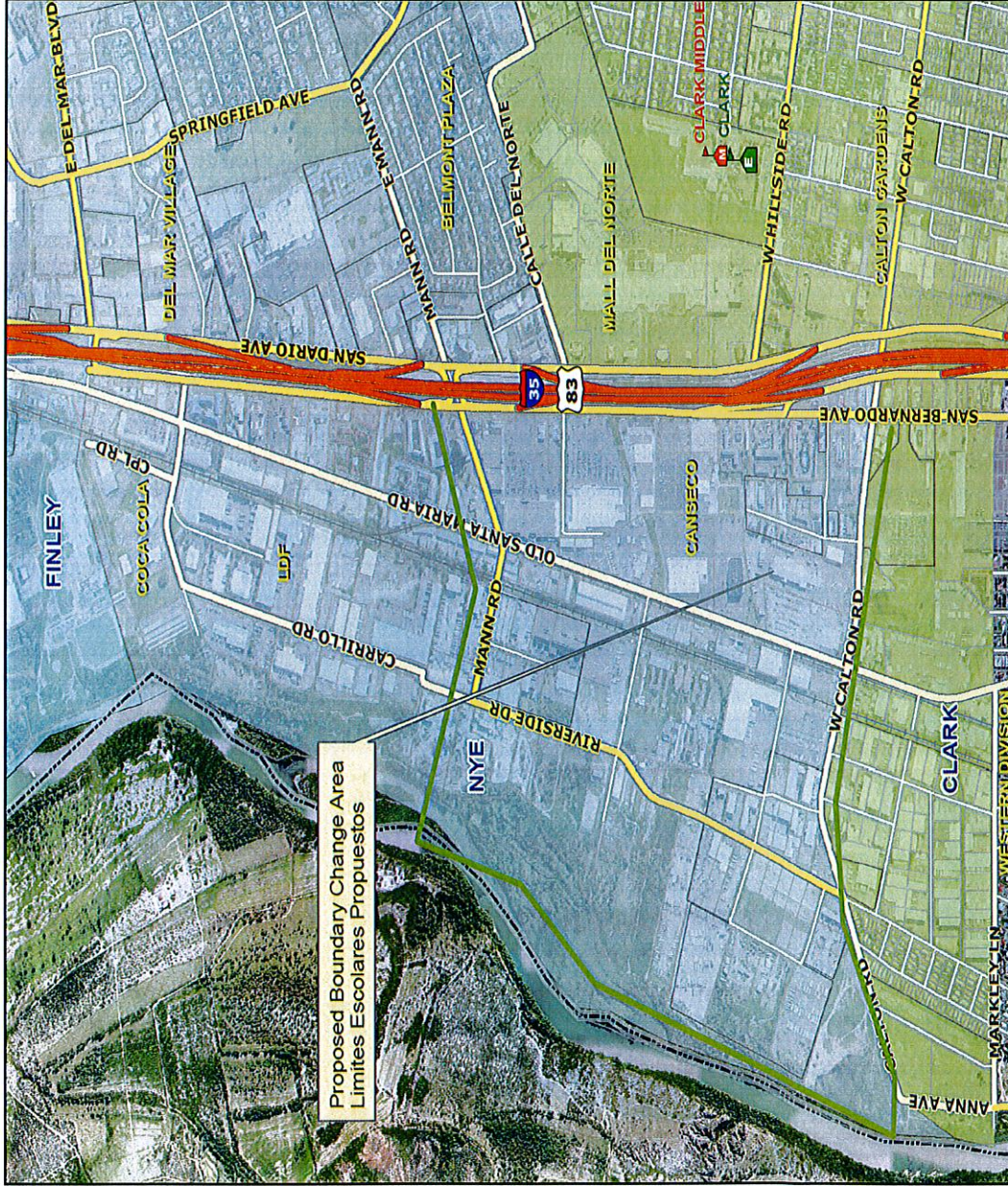


UNITED INDEPENDENT SCHOOL DISTRICT

This agency is not responsible for the misinterpretation of this map. This map does not meet national map accuracy standards and should not be used for engineering purposes.



Boundary Change from Nye to Clark Elementary



Proposed Boundary Change Area
 Límites Escolares Propuestos

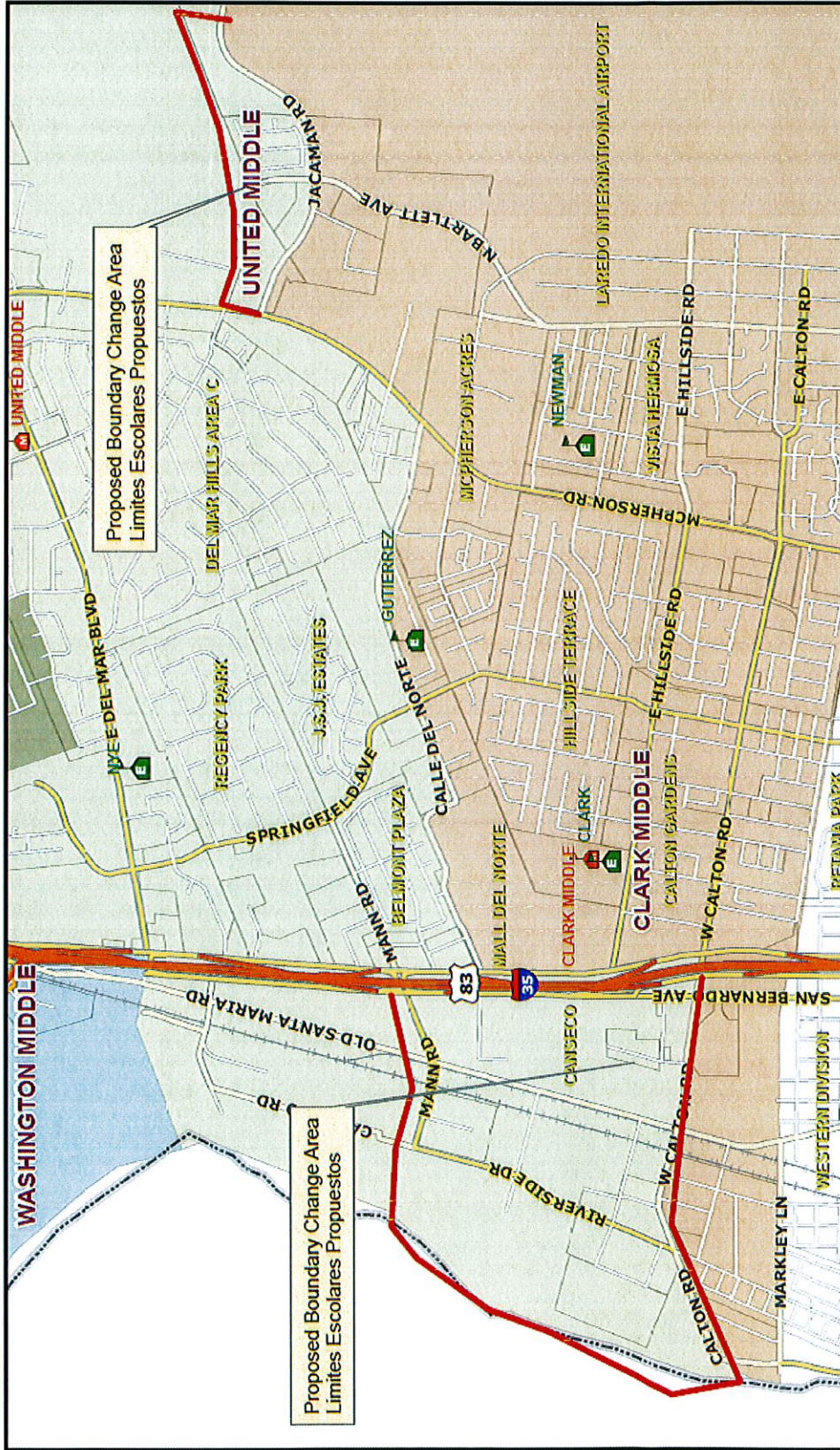


UNITED INDEPENDENT SCHOOL DISTRICT



This agency is not responsible for the misinterpretation of this map.
 This map does not meet national map accuracy standards and
 should not be used for engineering purposes.

Boundary Change for United Middle to Clark Middle



UNITED ISD



This agency is not responsible for the information on this map. The map does not set national race, accuracy standards, and should not be used for engineering purposes.