

**ROBSTOWN INDEPENDENT SCHOOL DISTRICT  
AGENDA ACTION SHEET**

Date: July 15, 2024

Subject: Discuss and Consider Approval of 24-25 ESC 2, ESC 10, and ESC 12 Contract for Programs and Services Contract

Administrator Responsible: Diana L. Silvas

Position: Deputy Superintendent

A. Purpose of Agenda Item:

Information Only

Action Needed

B. Authority for this Action:

Local Policy \_\_\_\_\_

Law or Rule \_\_\_\_\_

C. Strategic Objective, Goal, or Need Addressed:

Approve the recommended ESC 2 & ESC 12 Contract for Programs and Services for 2024-2025

D. Summary:

Please see the attached summary of the programs and services received from ESC 2, ESC 10, and ESC 12.

E. Alternatives Considered:

F. Comments Received:

G. Administrative Recommendation: That the Board approve the 2023-2024 ESC 2 & ESC 12 Contract as presented.

H. Fiscal Impact and Cost: ESC 2 - \$57,492.83  
ESC 10 - \$ 1,400.00  
ESC 12- \$ 6,900.00  
Total \$ 65,792.83

I. Monitoring and Reporting Time Line:

Clear Form



For use in calculations below.  
(Final invoice based on ADA from TEA's 2024 fall release)

Robstown ISD

District Name:

89.1

ADA for 2024-2025

07/15/2024

Date:

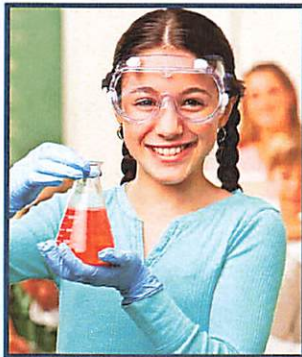
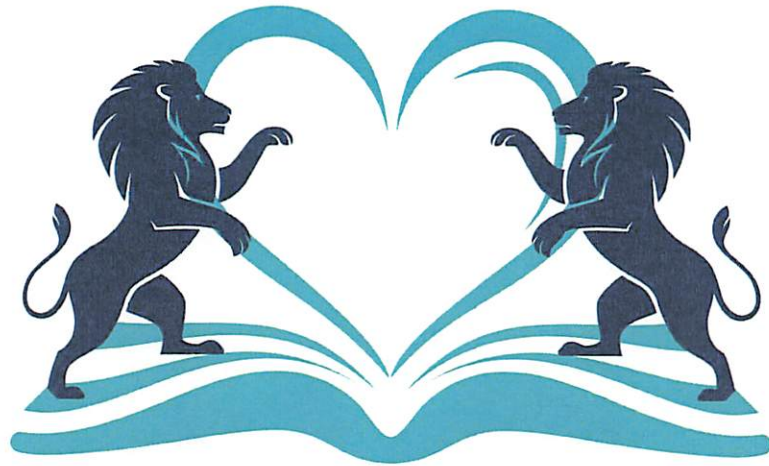
2,350

Enrollment for 2024-2025

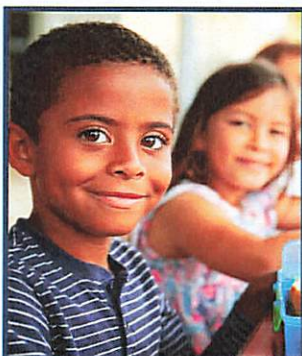


# PROGRAMS & SERVICES

2024-2025 CONTRACT



*Courage & Compassion  
for Educational Success*



**Education Service Center, Region 2**

209 North Water Street, Corpus Christi, Texas, 78401

[www.esc2.net](http://www.esc2.net)

# Center for Leadership Development

## Assistant Principal Academy

Please fill in total assistant principals.

\$ 0.00

Fees: Total # of Assistant Principals \_\_\_\_\_ X \$500 =

The Assistant Principal Academy (APA) provides leadership and networking opportunities for assistant principals with less than three years' experience. The APA will provide assistant principals 6 monthly meetings throughout the school year focused on developing leadership skills to become a successful school administrator.

### Additional Days

[Click Here for Additional Days](#)

Additional On-Site support or training days (maximum of 40 participants)

Additional days

0

x \$795 per day/consultant (Full Day - 6 Hours)

0

x \$450 per day/consultant (Half Day - 3 Hours)

\*Additional \$20 per participant 41 - 60.

For more information on cooperative services please contact [cld@esc2.net](mailto:cld@esc2.net).

---

## Leadership Mentoring for Principals

\$ 0.00

Cost: \$4,000 per participant 0

(\$3,500 per campus leader for PILC COOP or Assistant Principal Academy members) 0

ESC 2 leadership coaches will work with campus leaders individually to develop an action plan for professional and organizational growth aligned to the ESF and T-PESS framework. Coaches will provide multifaceted support by collaboratively identifying key action steps and skills to support leadership development. Leaders will also participate in a professional learning community to share ideas, challenges, and solutions.

### Includes:

- Four Campus Visits (2 fall/2 spring) up to 3 hours each visit by Mentor Coach.
- Virtual Meetings (4 total): An introductory meeting followed by 3 virtual meetings.
- Technical Assistance and/or support offered throughout the year via a phone conference or email.

For more information on cooperative services please contact [cld@esc2.net](mailto:cld@esc2.net).

## Alternative Teacher Certification Program (ATCP)

\$ 0.00



The ATCP program prepares individuals interested in becoming a certified Texas educator. The program consists of self paced online coursework modules. The certification being sought will determine the length of the online course work (16-31 weeks). Phase 1 consists of completion of the preservice content modules and passing the state certification content exam. Phase 2 consists of a paid internship for the duration of one academic school year; additionally, the intern will be the teacher of record, receiving all the benefits of a certified teacher. An on-site mentor teacher and field supervisor will be provided to help the intern through the first year of teaching. Upon successful completion of the year-long internship, the candidate will be eligible to apply for standard certification.

\$5700 per candidate      0

\$1000 down payment

Sixteen monthly payments of \$293.75

**Principal Instructional Leadership Cooperative (PILC)**

\$ 0.00

The Principal Instructional Leadership Cooperative (PILC) provides opportunities for instructional leaders to gain or expand skills to be effective on their campus. The PILC offers monthly meetings (six per year) to share in-depth and timely information for critical issues, training, and networking opportunities for attendees.

Total # of Principals X \$ 500      0

**Additional Days**

[Click Here for Additional Days](#)

Additional On-Site support or training days (maximum of 40 participants)

Additional days

0      x \$795 per day/consultant (Full Day - 6 Hours)

0      x \$450 per day/consultant (Half Day - 3 Hours)

\*Additional \$20 per participant 41 - 60

For more information on cooperative services please contact [cld@esc2.us](mailto:cld@esc2.us).

**Superintendent/School Board Leadership Services Cooperative**

\$ 0.00

- Phone/remote assistance
- Board Trainings
- Up to two on-site days. Each additional on-site day is at a discounted rate of \$795.
- Member fees based on UIL Classification

District Size	Price
<input checked="" type="radio"/> None	
<input type="radio"/> 6A, 5A	\$7,000
<input type="radio"/> 4A	\$6,500
<input type="radio"/> 3A	\$5,500
<input type="radio"/> 2A	\$4,000
<input type="radio"/> 1A	\$2,500
<input type="radio"/> Charter Schools	\$2,500

For more information on cooperative services please contact [fieldservice@esc2.net](mailto:fieldservice@esc2.net).

## Texas Instructional Leadership

\$ 0.00
---------

The Texas Instructional Leadership (TIL) provides face to face professional development, implementation and one on one coaching support to campuses and district leaders on their ability to build the capacity of educators that they manage.

TIL trainings are aligned with many of the best practices described in the Effective Schools Framework and The Education Service Center, Region 2 is a TEA approved provider of TIL Learning Cycles for schools seeking a capacity builder to support the execution of improvement planning.

Provided at \$10,000 per campus.

### Schoolwide Culture Routines

Schoolwide Culture Routines trains leaders to develop their cultural vision and the systems and routines to bring that vision to reality, monitor it throughout the year, and how to intervene when necessary to ensure it stays strong.

Number of Campuses: 0

### Observation and Feedback

Observation and Feedback provides a framework for developing teachers on a clear and research-based progression of action steps that are backed by research to dramatically impact student learning and achievement. In addition, we discuss how to identify the highest leverage action steps for teachers, how to give effective feedback, and how to lead effective coaching conversations.

Number of Campuses: 0

### Data Driven Instruction

Data-Driven Instruction is a highly effective, research-based training that guides teachers and administrators to spend less time teaching their students what they already know and more time on what their students need. It also answers the questions, "How do I know if my students are learning? And if they aren't, what do I do?"

Number of Campuses: 0

### Lesson Alignment and Formative Assessment

Lesson Alignment trains leaders to guide their teachers in ensuring effective daily lesson alignment to standards and to assessments in ways that will drive student learning. Leaders are trained on how to coach teachers to master the skills they need to make their planning consistently effective. Formative Assessment trains leaders to guide their teachers in crafting rigorous and aligned daily and weekly assessments that will support analysis of student mastery and gaps. It also trains leaders to coach their teachers to master the skills of assessment writing and analysis to ensure their continuous improvement in designing formative assessments.

Number of Campuses: 0

For more information on cooperative services please contact [clid@esc2.net](mailto:clid@esc2.net).

## Curriculum, Instruction, and Accountability

### Achievement Acceleration Academy

\$ 0.00

- \$3000 per district Cost
- Classroom Strategies that Work
- Data and Progress Monitoring
- Data Enriched Classrooms
- Enhancing Learning using Differentiation and Engagement Strategies
- Fostering Growth Through Teacher Reflection
- Fundamental Five Training
- Top Strategies to Improve Classroom Management
- Verbalize to Internalize: Increasing Accountable Student Talk Time
- Enhancing Learning using Differentiation and Engagement Strategies
- ESSA- Equity Plan Training

Number of Districts 0 X \$3000 Per District

For more information on cooperative services contact Mandy Delgado at [cia@esc2.net](mailto:cia@esc2.net).

### Additional Days

Click Below for Additional Days

Additional On-Site support or training days (maximum of 40 participants)

Additional days

0 x \$795 per day/consultant (Full Day - 6 Hours)

0 x \$450 per day/consultant (Half Day - 3 Hours)

\*Additional \$20 per participant 41 - 60

For more information on cooperative services please contact [sped@esc2.net](mailto:sped@esc2.net).

# Curriculum, Instruction, and Accountability

## Assessment & Accountability Cooperative

\$ 3,000.00

(Note: To enable, please fill out the Estimated ADA at the top.)

Number of Districts 1 X \$3000 Per District

For more information on cooperative services contact Mandy Delgado at [cia@esc2.net](mailto:cia@esc2.net).

---

## Assessment & Accountability Cooperative - New DTC Academy

\$ 0.00

(Note: To enable, please fill out the Estimated ADA at the top.)

Number of Districts 0 X \$500 Per District

For more information on cooperative services contact Mandy Delgado at [cia@esc2.net](mailto:cia@esc2.net).

---

## Advanced Academic/GT Services Cooperative

\$ 0.00

(Note: To enable, please fill out the Estimated ADA at the top.)

\$700 + \$1.50 per ADA, \$13,000 max.

For more information on cooperative services contact Mandy Delgado at [cia@esc2.net](mailto:cia@esc2.net).

---

## Early Childhood Cooperative

\$ 6,000.00

Early Childhood Only: \$2,000 per campus. 3 Campuses

For more information on cooperative services contact [cia@esc2.net](mailto:cia@esc2.net).

---



# Eduphoria

\$ 0.00

Eduphoria synthesizes the essentials of education: instructing, learning, and assessing.

Aware Premium

Data analysis in a dynamic reporting engine, with options to save as static reports unique to your district

- District, campus, teacher, and team tests
- Immediate access to data with customizable views
- Plain paper and online test administration
- District and campus-created student forms for monitoring
- Online assessment platform, Interactive Items, Student Supports, LockDown browser

Strive

Facilitate the transformation of disconnected evaluation procedures into a comprehensive, growth-focused program.

- Evaluation process and professional growth framework
- Custom or state-specific support
- Observations, evaluations, and data analysis
- Teacher portfolio and PD tracking
- Facilitate communication between educators and coaches
- Conference builder and course management for professional learning

(Renewal Only) - Suite

(Renewal Only) - Aware Maintenance

(Renewal Only) - Aware Test Builder

(Renewal Only) - Convert to Premium

(Renewal Only) - Convert to Premium + Strive

For more information on cooperative services contact [cia@esc2.net](mailto:cia@esc2.net).

## Bilingual and ESL Program Services

The Bilingual and ESL Program Services assists LEAs with the development and implementation of the language program and ensures that English learners, including immigrant children and youth, attain English proficiency and develop high levels of academic achievement in English. In order to meet this goal we offer instructional and technical assistance to ensure English Learners (EL)/Emergent Bilingual (EB) students in our schools are afforded every opportunity to reach English language proficiency.

\$ 0.00

### Included Services

- Quarterly Bilingual /ESL Directors' Meetings
- Technical assistance on the following:
- Program Implementation resources
- Content-based Language Instruction (CBLI) and the web-based guidebook
- ESSA Consolidated Federal Grant Application
- ESSA Consolidated Compliance Reports
- Supporting English Learners in Texas (TXEL.org) Website
- Annual Title III, Part A Validation Process
- Allowable use of Title III, Part A Funds
- Examples of supplemental activities
- Parent, family, and community engagement
- Immigrant children and youth
- Early Childhood Literacy
- Private Non-Profit (PNP)
- Progress monitoring of emergent bilingual and/ or immigrant children

\$1295 on-site, full day (6 hours) for up to 40 participants\*

\$795 on-site, half-day (3 hours) for up to 40 participants\*

### For Title III, EL SSA Members

0 x \$795 on-site full day (6 Hours) for up to 40 participants\*

0 x \$450 on-site half day (3 Hours) for up to 40 participants\*

\*Additional \$20 per participant 41 - 60

For more information on cooperative services please contact [sped@esc2.net](mailto:sped@esc2.net).

## Career and Technical Education Carl Perkins V Shared Services Arrangement

The CTE Carl Perkins SSA provides services to schools who are required, due to allotment amount (less than \$15,000), or choose for programmatic or fiscal reasons, to select Education Service Center, Region 2, as their fiscal agent.

As the fiscal agent, the ESC- 2 CTE Program, in coordination with the SSA members, will determine mutually beneficial uses for the Carl Perkins allotment.

---

### Career and Technical Education Services

- |   |  |
|---|--|
| <ul style="list-style-type: none"> <li>• CTE Advisory Council requirements</li> <li>• Career Interest survey Implementation for students</li> <li>• Quarterly CTE Directors Meetings at Region 2</li> <li>• TEA CTE Administration Training</li> <li>• TEA CTE Counselor Training</li> <li>• Comprehensive Local Needs Assessment Training</li> </ul> | <ul style="list-style-type: none"> <li>• Technical assistance in planning, developing, and evaluating rigorous relevant career and technical education (CTE) programs that meet the needs of all students and the requirements of the Carl D. Perkins Grant</li> <li>• Career and Technical Education (CTE) Partnership Development</li> <li>• Technical assistance in developing partnerships with business and industry and community organizations</li> </ul> |
|---|--|

\$ 650.00

CTE Evaluation Profit Loss Calculator: Contact ESC-2 specialist for pricing

\$ 0

Comprehensive CTE Program Evaluations

(one to three days)

Non-Co-op: \$1295 - \$3885

SSA Co-op: \$795 - \$3496

Please enter price into field

\$ 0

CTE PEIMS (Public Education Information Management System) Data review  
2 Day Pricing

Non-Co-op: \$3485

SSA Co-op: \$3096

Customized Program of Study Framework:  
The pricing is determined by the number of programs of study offered by each Local Education Agency (LEA).

Please enter price into field

\$ 0

Industry to the Classroom: CTE Teacher Training Services:

Non- Co-op \$650

SSA Co-op: \$400

CTE on Demand/Services: Contact ESC 2 specialist for pricing

Please enter price into field

\$ 0

Customized services as needed by LEA:  
Contact ESC 2 specialist for pricing

Please enter price into field

\$ 0

For more information on cooperative services contact [statefed@esc2.net](mailto:statefed@esc2.net).

## ELAR/SS Cooperative

\$ 1,575.00

Note: Please ensure ADA number has been filled out on the first page of this contract.



Basic Member Access to reduced rates for workshops held at ESC-2 and on-site sessions

Add On Days:



\$795 per day for up to 20 days

0 Enter Requested Days (1 - 20)

For more information on cooperative services contact [cia@esc2.net](mailto:cia@esc2.net).

---

## Math/Science Cooperative

\$ 1,575.00

Note: Please ensure ADA number has been filled out on the first page of this contract.



Basic Member Access to reduced rates for workshops held at ESC-2 and on-site sessions

Add On Days:



\$795 per day for up to 20 days

0 Enter Requested Days (1 - 20)

For more information on cooperative services contact [cia@esc2.net](mailto:cia@esc2.net).

---



\$ 4,231.14

## TCMPC TEKS Resource System

(Note: To enable, please fill out the Estimated ADA at the top.)



One-time fee for new users...\$1500

TCMPC Curriculum Documents (4 core content areas K-12)



- TCMPC Curriculum Documents \$5.40 x ADA
- TCMPC Online System (REQUIRED)

Number of Campuses 5 \$750 per campus, \$1500 minimum.

For more information on cooperative services contact [cia@esc2.net](mailto:cia@esc2.net).

## TEKS Resource System Onsite Workshops

\$ 0.00
---------

\$795 per onsite session, up to 40 participants. Please select from the following the sessions your LEA would like to purchase at the reduced rate.

- TRS Overview Training for New Users (\$795)
- TRS Overview Refresher Training (\$795)
- TEKS 101 and TRS RLA Overview (\$795)
- TEKS 101 and TRS Mathematics Overview (\$795)
- TEKS 101 and TRS Science Overview (\$795)
- TEKS 101 and TRS Social Studies Overview (\$795)
- TRS Assessment Center Training (\$795)
- TRS Implementation Training for Administrators (\$795)
- Planning from the Instructional Focus Document and Facilitated Planning (\$795)

For more information on cooperative services contact [cia@esc2.net](mailto:cia@esc2.net).

## TCMPC TEKS Resource System Cooperative (TExGUIDE)

TExGUIDE Quote

\$5,000 Cost for ADA <= 1666 or \$3.00 per ADA >= 1667

For more information on cooperative services contact [cia@esc2.net](mailto:cia@esc2.net).

\$ 0.00

## TEKS Implementation Guide

(Note: To enable, please fill out the Estimated ADA at the top.)

\$ 0.00

ADA	Fee
0-499	\$500
500-999	\$750
1000-1999	\$1,000
2000-2999	\$1,250
3000+	\$1,500

For more information on cooperative services contact [cia@esc2.net](mailto:cia@esc2.net).



\$ 12,602.50

## DMAC Solutions

For more information on cooperative services contact [dmac@esc2.net](mailto:dmac@esc2.net).

### DMAC Application Purchased by District:

State Assessment (\$1,500)

TEKScore (\$1,500)

TPRI (\$500)

Tejas Lee (\$500)

CIA Alignment (Curriculum, Instruction, Assessment) (\$500)

**DMAC Application Purchased by Campus:**

TAG (\$500) 5 Campuses

Appraisals (PDAS and T-TESS) (\$250) 5 Campuses

FormWorks (\$100) 0 Campuses

PGP (HS) & PGP Intervention (MS/HS) Personal Graduation Plans (\$400) 0 Campuses

PlanWorks (\$500) 0 Campuses

Learning Plans (\$500) 0 Campuses

Lead4Ward (\$395) 5 Campuses

LPAC (\$500) 0 Campuses

**Class Roster Fees: Based on Student Enrollment Value Box on the 1st Page Entered. (Required)**

Daily Updates (\$1.65 per student) On site support/training days included.

Please email [dmac@esc2.net](mailto:dmac@esc2.net) for assistance.

\*DMAC is required to use data from the Texas Public School Directory from 2 years prior.

\*Estimate of your total cost for services; final balance due will be reflected on the official DMAC Service Agreement.

## TEKS Banks

Please check box & type quote into pricing box on the right

TEKSbank requires a district wide commitment. Individual campuses may not subscribe. For pricing information contact [accountability@esc2.net](mailto:accountability@esc2.net).

---



# EDUHERO

EduHero

I would like a quote for EduHero...email: [cia@esc2.net](mailto:cia@esc2.net).

For more information on cooperative services contact [cia@esc2.net](mailto:cia@esc2.net).



# Special Programs

## Special Education Programs Support Cooperative

(Note: To enable, please fill out the Estimated ADA at the top.)

\$ 3,822.28

**Tier 1**  The Special Education Programs Support Cooperative provides guidance and support to Special Education programs personnel to ensure schools operate in accordance with State and Federal guidelines. In addition to providing grant funded technical assistance to our districts, we also provide a wide range of programs and services that support implementation, mentoring, and professional development. Membership in the Special Education Programs Support Cooperative delivers these value-added services at the Tier-Based costs below.  
**Note:** All required TEA training will continue to be provided at no cost to districts.  
**\$3,800 Base Cost + \$.25 per ADA**  
Customized professional development \$795 on-site, full day (6 hours) for up to 40 participants\*, \$450 on-site half-day (3 hours) for up to 40 participants\*, Unlimited half-price Special Education Workshops at ESC2 (full-day or half-day sessions)\*\*

**Tier 2**  **\$5,850 Base Cost + \$.50 per ADA**  
All of Tier 1 services plus: Program review of LEA's special education referral process, special education and IEP development process, IEP implementation, data collection methods/progress monitoring, transition services, or special education inclusion practices. One full day on-site workshop tailored to your LEA (up to 40 people)

**Tier 3**  **\$10,100 Base Cost + \$1.00 per ADA**  
All Tier 1 & 2 services, plus an additional 2 full days in-district to provide programs support. Comprehensive Needs Assessment (CNA) deep dive in-district. CNA derived and prescriptive training and mentoring.

\*\*Excluding Reading by Design, CPI, and TOPS

**Additional Days**

Click Below for Additional Days

Additional On-Site support or training days (maximum of 40 participants)

Additional days

0 x \$795 per day/consultant (Full Day - 6 Hours)

0 x \$450 per day/consultant (Half Day - 3 Hours)

\*Additional \$20 per participant 41 - 60

For more information on cooperative services please contact [sped@esc2.net](mailto:sped@esc2.net).

## State & Federal Programs Partnership

### Collaborative Partners

\$ 3,822.28



(Note: To enable, please fill out the Estimated ADA at the top.)

\$3,800 Base Cost + \$.25 per ADA

Collaborative Partners will receive guidance and support to ensure program compliance.:

- One seat for the Federal Programs Directors Meetings (7 half-days)
- One seat for the Federal Programs Academy for New Administrators
- On-site professional development (one full day)

### Premier Partners



(Note: To enable, please fill out the Estimated ADA at the top.)

\$5,850 Base Cost + \$.50 per ADA

Premier Partners will receive guidance and support to ensure program compliance.

- Two seats for the Federal Programs Directors Meetings (7 half-days)
- Two seats for the Federal Programs Academy for New Administrators
- On-site professional development (two full days)

---

## State and Federal Programs Elite Solutions

\$ 0.00



\$10,500 base cost + \$1.00 per ADA

ESSA Consolidated Federal Grant managing agent for:

- Applicant Designation and Certification Form
- Grant Application
- Amendment and Negotiation
- Compliance
- Random Validation

The ESC-2 agent and the LEA point of contact will meet for 10 half-days to negotiate grant information.

On-site collaboration to:

- Conduct a comprehensive needs assessment
- Develop the LEA Plan
- Develop the District Improvement Plan
- Develop the Campus Improvement Plan

## Counselor Connect Cooperative



ESC2 Counselor Connect is an innovative cooperative designed to support and empower counselors in both elementary and secondary schools. This collaborative platform brings together specialists with extensive experience in mental health, academia, College Career Military Readiness (CCMR), the Texas Model for Comprehensive School Counseling Program, and legislative updates. By fostering connections and providing targeted expertise, Counselor Connect aims to enhance the capabilities of Region 2 counselors in serving the diverse needs of students. With Counselor Connect Coop, counselors can tap into a network of expertise, exchange ideas, and enhance their skills to better serve students. This cooperative model offers a unique and impactful approach to counselor development, enabling them to make a significant difference in the lives of the students they support.

\$ 1,300.00
-------------

### Included Services

- Six full day trainings
- Professional School Counseling Summit
- National School Counseling Week Luncheon

2 X \$650 per counselor

For more information on cooperative services please contact [stateded@esc2.net](mailto:stateded@esc2.net).

## New Counselor Institute (NCI)

ESC Region 2's New Counselor Institute (NCI) is a place where participants can seek guidance while collaborating and networking with other new counselors in the region. Through this empowering leadership and learning opportunity, counselors will not only leave with a multitude of tools to build a successful comprehensive school counseling program, but they will also leave feeling supported and inspired.

\$ 0.00

### Included Services

- Evidence-based professional development designed to meet the needs of new counselors
- College and Career Military Readiness overview
- School counseling resources

X \$400 per counselor non Counselor Co-op

X \$200 per counselor Counselor Co-op Members

Choose 1 Choice from above

For more information on cooperative services please contact [statefed@esc2.net](mailto:statefed@esc2.net).

## Counseling On Demand

Provides customized professional development opportunities for counselors and mental health professionals. Our team of specialists can deliver training directly to your district or develop specialized training at our Educational Service Center upon request. The opportunities cover a range of categories, including Texas Model for a Comprehensive School Counseling Model, mental health and wellness, college and career readiness, social-emotional learning, guidance and counseling techniques, special populations, and data-driven counseling.

\$ 0.00

We tailor the training to meet the unique needs of your campus or district.

### Cost Cooperative LEA's

0 x \$795 per day (Full Day - 4 - 6 Hours)

0 x \$450 per day (Half Day - 3 Hours)

### Cost Non - Cooperative LEA's

0 x \$1295 per day (Full Day - 4 - 6 Hours)

0 x \$795 per day (Half Day - 3 Hours)

\*Additional \$20 per participant 41 - 60

\*See administrator for pricing for groups larger than 60

For more information on cooperative services please contact [statefed@esc2.net](mailto:statefed@esc2.net).

## Parent and Family Engagement Services

Parent and family engagement (PFE) is a critical requirement of the Title I, Part A program. LEAs fulfill the PFE requirement by conducting outreach to all parents and family members and by implementing programs, activities, and procedures for the meaningful involvement of parents and family members in Title I, Part A programs. Parents of participating children should play an important role in the planning of such programs, activities and procedures and the LEA should engage parents in meaningful consultation to ensure optimal involvement..



\$ 795.00

### Module 1-The Content & Cycle of the School-Parent Compact:

LEA's will learn about the document designed to outline the shared responsibilities and commitments between schools and parents to enhance student learning and achievement.

### Module 2-The Content & Cycle of the PFE Policies (LEA & School):

By establishing comprehensive PFE policies and following a systematic cycle of development, implementation, and evaluation, LEAs and schools can create a supportive environment that actively involves parents and families in the education of their children, ultimately leading to improved student success and well-being.

- 0      X \$450 for half day (3 hours or less)
  - 1      X \$795 for full day (4 to 6 hours)
-



\$ 0.00

## ASCENDER

*Elevating Technology Solutions*

TxEIS//ASCENDER commitment forms are mailed to LEAs in the spring. For a copy of your commitment forms or to submit your signed commitment, Please email: [dp@esc2.net](mailto:dp@esc2.net)

I have a commitment quote (*Insert Amount Here*) \$ 0

*Or*

I would like a quote for...(See Below)

Student Information System

Business ERP Applications

---

## Coastal Bend Application Tracking System

\$ 3,000.00

		Price per unit	Quantity
<input checked="" type="checkbox"/>	Campus	\$600	5
<input type="checkbox"/>	On-site training 1st time subscribers	\$450	

Administrative Fee 10%

**Digital Media and Library Resource Services**

\$ 174.64

(Note: To enable, please fill out the Estimated ADA at the top.)

**Library Services \$ 2.50 per ADA**

**None**

**Discovery Education \$1.96 per ADA**

**Discovery Ed Science Supplemental \$1,800 per campus 0**

**Discovery Ed Mystery Science Contact dltech@esc2.net \$ 0.00**

**Living Science Materials/Van Mail \$5.00 per ADA (min. \$1000)**

**Distance Learning - Virtual Student Events - \$1500 per district 0**

**Zoom Licenses**  **Enter Number of Licenses Desired \$ 50 Cost Per License**



For more information on cooperative services please contact dltech@esc2.net.





## CyberSecurity Services

\$ 0.00

For more information, please email: [helpdesk@esc2.net](mailto:helpdesk@esc2.net)

I have a commitment quote (*Insert Amount Here*) \$ 0.00

*Or*

I would like a quote for CyberSecurity Services

---

## Managed IT Services

\$ 0.00

Call MIS for quote. (361) 561-8449  
(See Commitment Worksheet for more details)

I have a quote (insert amount here) \$ 0

---

## Management Information Systems

\$ 0.00

### Internet Access

Coastal Bend Network (CoBeNet)

Contact ERate through your Technical Director / Coordinator

Email: ESC 2 MIS helpdesk@esc2.net or call 361-561-8449 for questions & assistance.

---

## MIS On-site Technical Support

\$ 0.00

CoBeNet member

non-CoBeNet member

## Bus Driver Certification Services

\$ 0.00
---------

The Education Service Center, Region 2, provides school bus driver training in order for LEAs to meet state requirements for certification. Individuals seeking School Bus Driver Certification are required to attend a 20-hour certification course covering content prescribed by the Texas Department of Public Safety and pass the state exam. All certified school bus drivers are required to attend an eight hour refresher course every three years and pass the state exam. The training schedule is available on the ESC-2 website at [www.transportation.esc2.net](http://www.transportation.esc2.net).



ELDT Theory \$500

**OnDataSuite**

(Note: To enable, please fill out the Estimated ADA at the top.) Pricing per district wide ADA only.

	ADA	Cost
	1-500	\$2,995
<input checked="" type="checkbox"/>	501-1,000	\$4,750
	1,001-10,000	\$6,250
	10,000 +	\$0.65/student

**Personnel Services Advisory Cooperative**

Please note there will be a \$125 fee assessed for non-cooperative member attendees that are not covered by the annual membership.

\$800 per LEA for 2 attendees.

Additional participants    0

## School Business Advisory Cooperative

\$ 0.00

### Basic Co-Op Membership \$2,000

The School Business Advisory Cooperative is designed to provide information, support, training, and networking opportunities for LEA Financial leaders and selected key business office personnel. Membership allows two employees to attend meetings.

Additional Employees can register to attend: 0

SBA Half Day meetings for \$150 per person/per meeting

SBA Full Day meetings for \$250 per person/per meeting

### Mentoring

Co-Op Member \$2,500

Non Co-Op Member \$3,500

Additional days can be added for \$1,000 per day 0 Days

## Business Consulting Services

\$ 0.00

These services are customized to your district. Available services include assistance with business office processes and procedures including annual audits, monthly accounting, payroll and reporting, fiscal year end, and financial reviews.

Please contact Lucio Mendoza, CFO for a quote (361) 561-8411 lucio.mendoza@esc2.us.

Consulting services provided at \$1,000 per day. 0 Days

For more information on cooperative services please contact Lucio Mendoza lucio.mendoza@esc2.us.

## School Health/Nurse Cooperative

\$ 2,000.00

The School Health Cooperative provides ongoing professional development and technical assistance for school health professionals (RN, LVN, MA, EMT) and School Health Advisory Councils (SHACs).

- Provide ongoing technical support to all aspects of schools and districts, especially school nurses/school health professionals and School Health Advisory Councils (SHACs) at a free or discounted rate.
- Maintain a networking system among ESC-2 districts for information dissemination and program support.
- Direct consultation with LEAs on all medical or nursing topics that affect daily school operations.



Fee \$2000 per year

For more information on cooperative services please contact Patrick McBride at [patrick.mcbride@esc2.us](mailto:patrick.mcbride@esc2.us).

## School Safety Cooperative

\$ 400.00

(Note: To enable, please fill out the Estimated ADA at the top.)

For more information on cooperative services please contact [safety@esc2.us](mailto:safety@esc2.us).

	ADA	Fee
	1-499	\$400
	500-999	\$550
<input checked="" type="checkbox"/>	1,000-1,499	\$750
	1,500-2,999	\$1,050
	3,000-5,999	\$1,250
	6,000 +	\$3,750

**\*\* Note: All Options below will only activate when the check box on the left side of chart is checked.**

Safety Walk Thru 0 x \$795 per day

Onsite Training/Technical Assistance 0 x \$795 per day

Mini Conference 0 x \$100 per day

Safety Audits                      Onsite (Ask for Quote)                      25% Discount for Coop Members

Playground Inspections                      Onsite (Ask for Quote)                      25% Discount for Coop Members

Emergency Preparation Guide 0 x \$795 per day

Wellness Plan 0 x \$795 per day



\$ 8,750.00

## Texas Student Data System (TSDS)

(Note: To enable, please fill out the Estimated ADA at the top.)

### Annual Fee For LEA: Student Count Step-Based

· **Unlimited** technical support/assistance for TEAL, ECOS, TRex, UID, PEIMS, & TSDS Core Collections:

- ECDS
- Class Roster
- RF Tracker
- SPPI-14

- Professional Development offered on each component throughout the year
- Coop daily rate for on-site training/support
- Coop rate for additional Professional Development seats beyond those included

None

### All Inclusive Table

TSDS Member Enrollment	Price	Included per TSDS session
Less than 1,250	\$8,750	• Includes 1 Free Seat for all TSDS Coop workshops
1,251 - 2,500	\$11,000	• Includes 2 Free Seats for all TSDS Coop workshops
2,501 - 4,000	\$13,250	• Includes 3 Free Seats for all TSDS Coop workshops
More than 4001	\$14,250	• Includes 3 Free Seats for all TSDS Coop workshops

### A La Carte Table

TSDS Member Enrollment	Price	Included per TSDS session
Less than 1,250	\$5,250	• Includes 1 Free Seat for all TSDS Coop workshops
1,251 - 2,500	\$6,600	• Includes 2 Free Seats for all TSDS Coop workshops
2,501 - 4,000	\$7,950	• Includes 3 Free Seats for all TSDS Coop workshops
More than 4001	\$8,550	• Includes 3 Free Seats for all TSDS Coop workshops

ECDS

\$2,000

SPPI-14

\$1,000

RF Tracker

\$750

Class Roster

\$2,000

Charter School  
Wait List

\$750

SELA

\$1,000

Child Find  
SPPI-11 & 12

\$1,000

**Please Provide Your ISD Contact Info:**

Name:

Diana L.Silvas

Title:

Deputy Superintendent

Email:

diana.silvas@robstownisd.net

Phone:

361-767-6600

Refresh / Recalculate   
Grand Total

**Estimated 2023-2024 Totals:**

**\$ 57,492.83**

**Certify and type your name and title below to indicate your acceptance of this contract**

I certify that I am authorized to submit this request on behalf of the entity listed on this contract, that I have examined this contract, and that all of the Information provided is true and correct to the best of my knowledge.

Name:

Title:

**Submit**

**Print**

Please use the submit button above.  
If you experience issues submitting the contract,  
please do the following:

1. complete contract
2. save contract
3. attach contract to an email message
4. send to: ed@esc2.net;ar@esc2.net



POWERED BY REGION 10 ESC

Region 10 ESC - Compliance Training Bundle Quote\*  
July 1, 2024 – June 30, 2025

District/Charter: Robstown ISD  
Region: 2  
Requestor: Maricela Medina  
Email: maricela.medina@robstownisd.net  
Total Staff Members: 440

# of FTE	Cost per District
101 – 500	\$1,400

- Anaphylaxis and Auto-Injectors
- Bloodborne Pathogens
- Bullying Prevention for Administrators, Teachers, and Staff
- Child Abuse, Sexual Abuse, and Other Maltreatment of Children
- Concussions for Coaches and Nurses
- Conflict Resolution
- Cyber Security – approved by DIR
- FERPA (Student Records)
- Human Trafficking of School-Aged Children
- Individuals with Disabilities Act (IDEA) \*New
- Laws Governing the Rights of Students with Disabilities (IDEA/ADA/504 Overview)
- Section 504 of the Rehabilitation Act
- Sexual Harassment
- Substance Abuse

- Suicide Prevention
- Title IX Sexual Harassment Training for Coordinators, Investigators, or Decision Makers
- Teen Dating Violence Prevention
- Texas Educators' Code of Ethics
- Understanding Copyright Law
- Spanish – Bloodborne Pathogens
- Spanish – Bullying Prevention
- Spanish – Child Abuse, Sexual Abuse...
- Spanish – FERPA
- Spanish – Human Trafficking
- Spanish – Section 504 of the Rehabilitation Act
- Spanish – Sexual Harassment
- Spanish – Suicide Prevention
- Understanding Copyright Law
- ❖ Courses may be added or removed per TEA/Legislature guidance.
- ❖ Regular completion reports included.

**Purchase Orders may be sent to:**

By mail:	By email:
<b>Region 10 Education Service Center</b> <b>Attn: Lori Aden</b> <b>400 E Spring Valley Rd.</b> <b>Richardson, TX 75081</b>	<b>Lori.Aden@region10.org</b>



**Contact Information:**

<b>Program Coordinator:</b>	<b>Program Technical Liaison</b>
Dr. Lori Aden 972.348.1510 Lori.Aden@region10.org	Julianna Perkins 972.348.1744 Julianna.Perkins@region10.org

*\*Quotes for districts in Regions 1, 7, and 20 must go through their ESC.*



**EDUCATION SERVICE CENTER REGION 12  
Memorandum of Agreement  
with Robstown ISD  
September 01, 2024 through August 31, 2025**

This Memorandum of Agreement ("Agreement") is entered into by and between the **Education Service Center Region 12** ("ESC Region 12") and **Robstown ISD**. The purpose of this Agreement is to authorize ESC Region 12 to provide Support and/or training services to the staff of **Robstown ISD** for the LEA's Skyward Student Information System (SIS) software.

**WITNESSETH**

WHEREAS, the Participating LEA is authorized by the Texas Education Code and the Texas Interlocal Cooperation Act (Chapter 791, Title 7, Government Code), to enter into agreements with Education Service Centers (ESC's); and,

WHEREAS, the Participating LEA desires to purchase certain Support Services; and,

WHEREAS, Texas Education Code 8.002 permits Regional Education Service Centers, at the discretion of the Commissioner of Education, to provide services to assist school districts in increasing efficiency and effectiveness of school operations (TEC 8.002). Authority for such services is granted under Texas Government Code §791.001 *et seq.*, as amended.

THEREFORE, now be it agreed that the undersigned Participating LEA, in return for payment of the consideration stated below, and subject to all terms of this Agreement, does hereby agree to the following terms, conditions, and general provisions.

**TERMS AND CONDITIONS**

1. **Term of the Agreement**  
The term of this Agreement shall be from **September 01, 2024** through **August 31, 2025**.
2. **Education Service Center Region 12 Responsibilities**
  - ESC Region 12 will provide Skyward Student Information System software training and support, which includes providing training workshops, refresher trainings, etc. either onsite at the ESC Region 12 primary location in Waco, TX, remote (i.e., Zoom, WebEx, etc) means, or Onsite at **Robstown ISD**.
  - ESC Region 12 will provide **Robstown ISD** the phone numbers and email addresses of ESC Region 12's support personnel for the purpose of direct support.

### 3. Limitations to this Memorandum of Agreement

- This Agreement stands alone, and is not intended to change, alter, or replace any existing or future contracts or agreements
- Support shall be limited to the availability of the ESC Region 12's Skyward Student Software Support staff during normal working hours and calendar of ESC Region 12
- ESC Region 12 may rotate or substitute support staff as needed
- ESC Region 12 shall not be held responsible for the outcome or negative consequences of PEIMS, TSDS, or Federal Office of Civil Rights reporting, or any other issues related to, or including, desk-top audits, PBMAS Monitoring, Accountability Ratings, repayments, missed deadlines, issues with special programs/populations, or reduction in funding due to data and/or reporting issues
- *This Agreement is made only between ESC Region 12 and Robstown ISD, and is not part of any other contractual agreement involving Robstown ISD's primary (home), Education Service Center or Skyward, Inc.*

### 4. Education Service Center Region 12's Skyward Support Package establishes a relationship with Robstown ISD, and includes membership in ESC Region 12's Skyward Student Cooperative (Co-op). This Co-op provides:

- a) Direct phone and email support, where designated District staff may call or email ESC Region 12's support staff for questions regarding the LEA's Skyward Student Information software;
- b) Application-specific, follow-up webinars designed to provide more in-depth knowledge to the TSDS/PEIMS trainings as applicable to the Skyward Student Information System;
- c) As an added value, TSDS/PEIMS Support and Training from ESC Region 12's PEIMS Support Staff, in which participants from Robstown ISD will be entitled to attend, at no additional cost, any TSDS/PEIMS Training sessions and Workshops held at ESC Region 12's primary location in Waco, Texas, or to join remotely when such workshops are offered through Zoom, WebEx, or other online sources. [Note: Pre-registration for all TSDS/PEIMS workshops and training sessions will be required in ESC Region 12's ESC Works]; and,

**5. Fees for ESC Region 12 Skyward Student Supplemental Support**

Option	Description	Cost
Skyward Student Supplemental Support	(Please complete section 8, below, with names and contact information for designated district contacts)	<b>\$6,900.00</b>
*Training/Consulting Days/Hours for Skyward Software	Number of Pre-purchased Skyward Training/Consulting Days Requested:  0.00 day(s) x \$950.00 =	<b>\$0.00</b>
Additional Cost:		
	<b>TOTAL CONTRACT COST</b>	<b>\$6,900.00</b>

*\* Note: All services must be used, or scheduled for use, prior to the expiration date of this Agreement. All unused time shall be lost, as there is not carry-over to the following year.*

**Robstown ISD's P.O. Number:**

(Note: Purchase order shall be invoiced and payable within 60 days after initiation of this agreement)

**6. IMMUNITIES**

Nothing herein shall be construed as limiting the powers or immunities otherwise held by either party, and this Agreement shall not be construed to create any employer-employee relationship between **Robstown ISD** and ESC Region 12, or any agreement whereby either party will have any obligation to indemnify the other. Each party agrees to hold the other, its governing board, officers, agents, servants and employees, harmless of and from all claims, demands, liability, loss, cost and expenses (including attorney's fees and costs of litigation) in any manner arising out of or resulting from any claim, demand, liability, loss, cost or expense caused in whole or in part by its own negligence or the negligence of its agents, servants or employees.

7. AUTHORIZATION

Robstown ISD

Education Service Center Region 12

Marc Puig  
Marc Puig (Jul 8, 2024 19:35 CDT)

David McKamie  
David McKamie (Jul 10, 2024 20:05 CDT)

Superintendent

Director

Jul 8, 2024

Jul 10, 2024

Date

Date

Dr. Marc Puig

David McKamie

Printed Name

Printed Name

M. Puig  
Marc Puig (Jul 10, 2024 13:05 CDT)

Terry Marak  
Terry Marak (Jul 10, 2024 20:07 CDT)

PEIMS Coordinator

Chief Financial Officer

Jul 10, 2024

Jul 10, 2024

Date

Date

Sherry Rubio

Terry Marak

Printed Name

Printed Name

