



Denton Independent School District

Gonzalez School for Young Children

Pre-School Task Force Update

November 10, 2009

Prepared for

Denton I.S.D. Board of Trustees

Today's Vision

Tomorrow's Reality.....

Planning for Our Future Growth.....

In Pursuit of Excellence.....





Gonzalez School for Young Children Pre-School Task Force Update

- 1. Overview**
- 2. Early Childhood Education Student Profile**
- 3. Gonzalez Student Programming Options**
- 4. Marketing Strategies**
- 5. Preliminary Recommendations**





Gonzalez School for Young Children Pre-School Task Force Overview

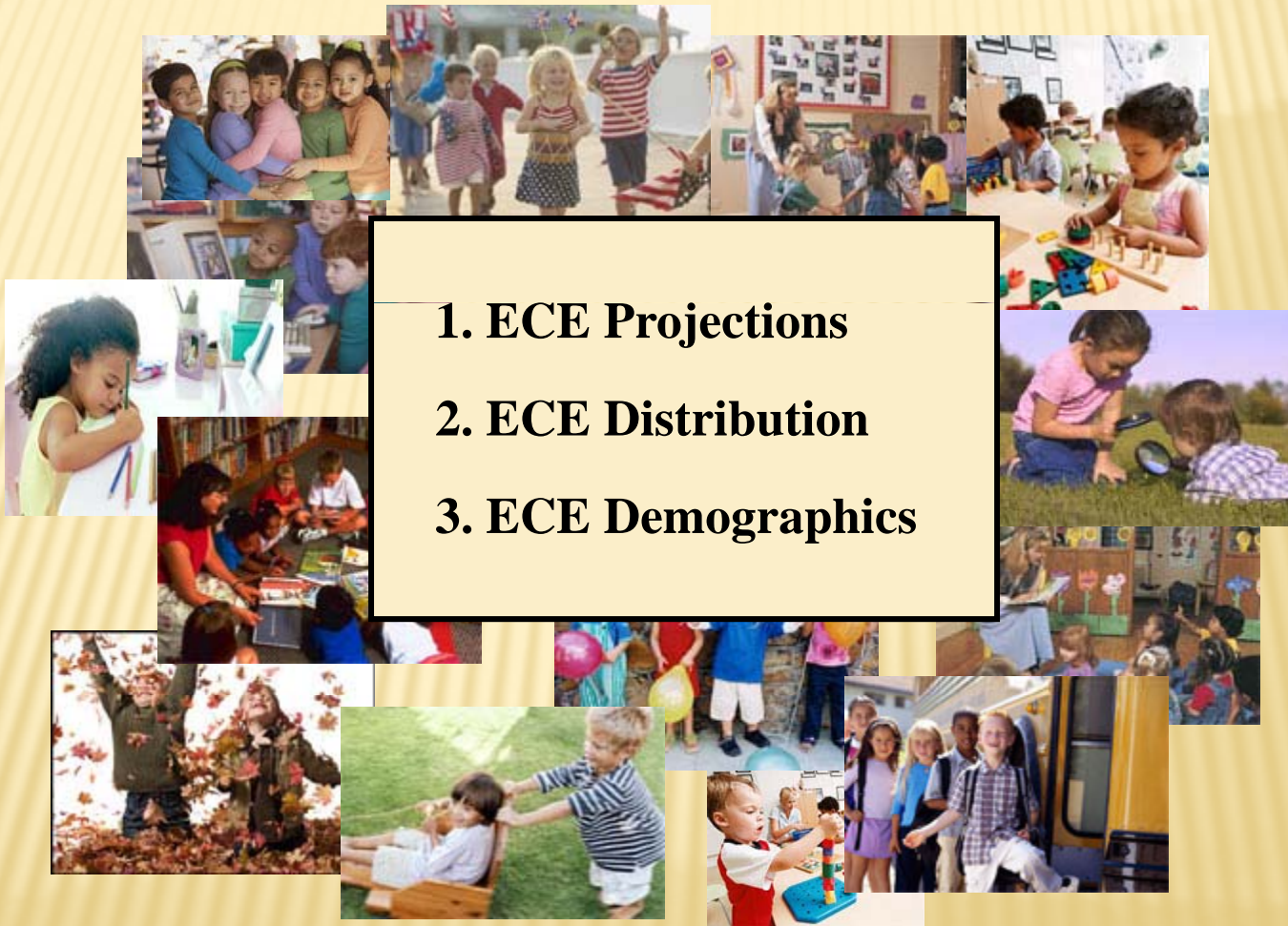
- 1. Task Force Members (Attachment #1)**
- 2. Task Force Charge**
- 3. Task Force Activities**
 - **Review of Demographics**
 - **Review of District Programs (Attachment #2)**
 - **Ann Windle School for Young Children Programming**
 - **District-wide Early Childhood Programming**
 - **Texas Education Code, Section 29.153 - Free Pre-Kindergarten**
 - **Gonzalez Student Program Options**
 - **Preschool Applications by Texas Districts (Attachment #3)**
 - **Marketing Strategies** (Attachment #4)
 - **Preliminary Recommendations**





Gonzalez School for Young Children

ECE Student Profile





Gonzalez School for Young Children

ECE Student Projections

(4 - Year Olds)



Year	Est. ECE Pop.	Est. Growth	Est. % Growth	Est. ECD Pop.
2004-05	1463			
2005-06	1603	140	9.60%	609
2006-07	1782	179	11.20%	677
2007-08	1940	158	8.90%	737
2008-09	2043	103	5.30%	776
2009-10	2071	28	1.40%	808



Average % Growth (5 years)

7.30%

Early Childhood Ed. Growth @ 5%		
Year	Est. Pop.	Est. ECD Students
2010-11	2175	848
2011-12	2283	890
2012-13	2397	935
2013-14	2517	982
2014-15	2643	1031

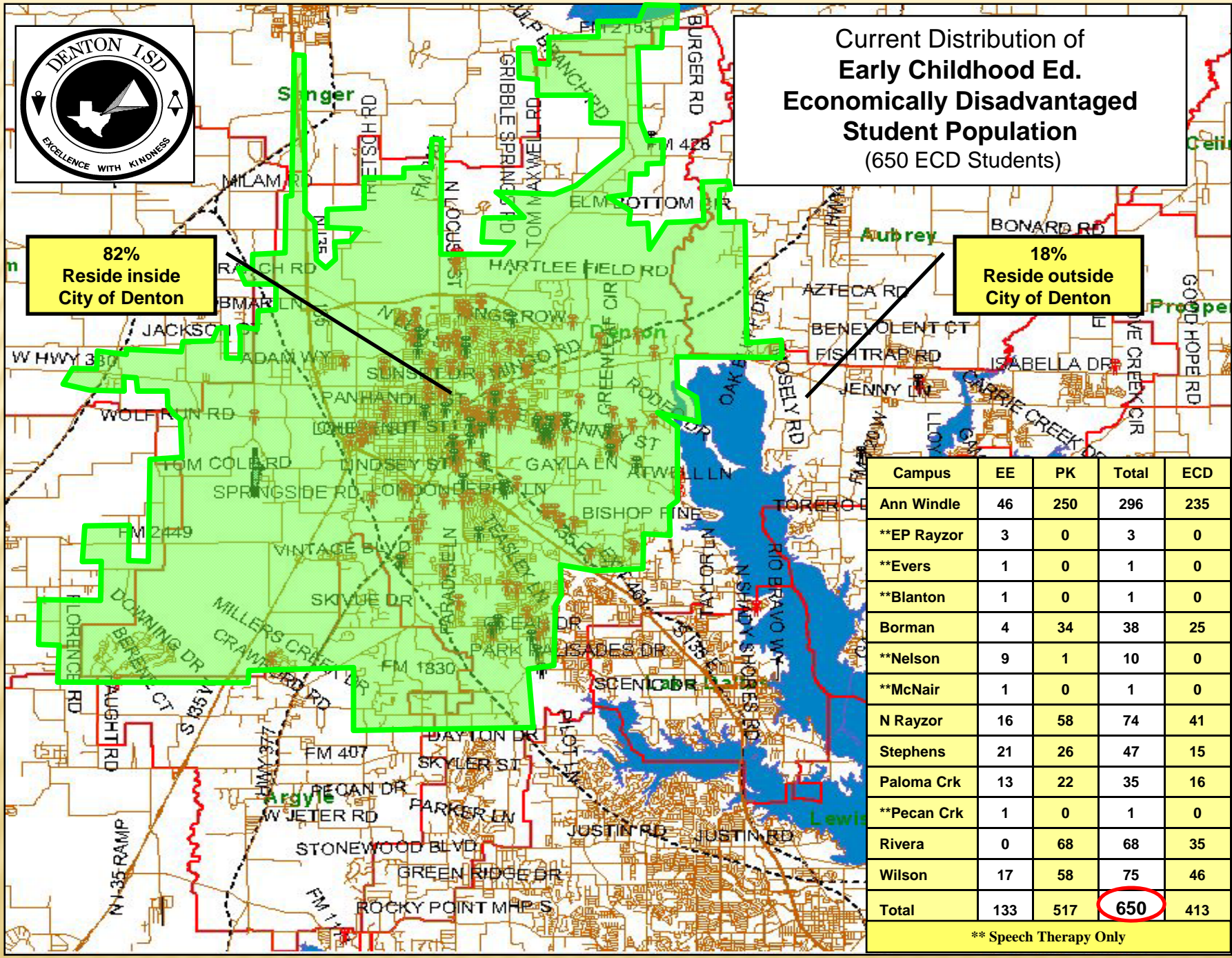
Early Childhood Ed. Growth @ 4%		
Year	Est. Pop.	Est. ECD Students
2010-11	2154	840
2011-12	2240	874
2012-13	2330	909
2013-14	2423	945
2014-15	2520	983



**Current Distribution of
Early Childhood Ed.
Economically Disadvantaged
Student Population
(650 ECD Students)**

**82%
Reside inside
City of Denton**

**18%
Reside outside
City of Denton**

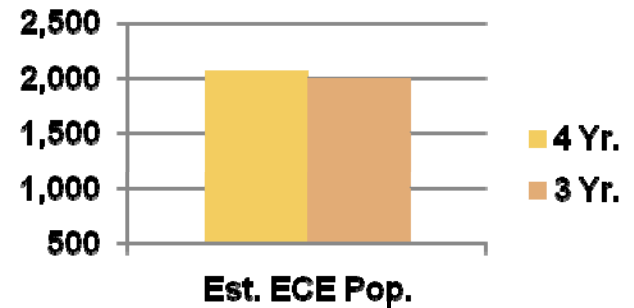
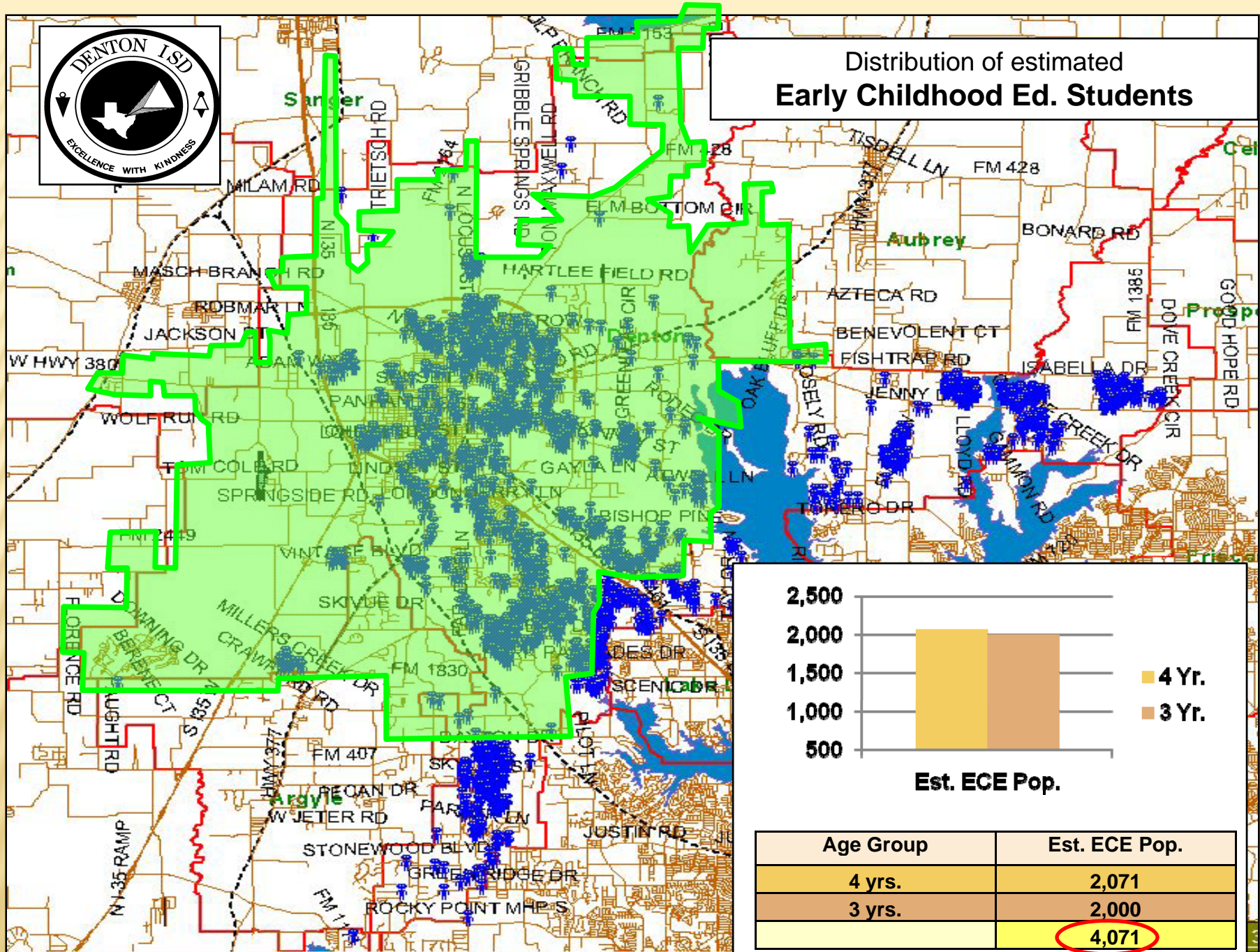


Campus	EE	PK	Total	ECD
Ann Windle	46	250	296	235
**EP Rayzor	3	0	3	0
**Evers	1	0	1	0
**Blanton	1	0	1	0
Borman	4	34	38	25
**Nelson	9	1	10	0
**McNair	1	0	1	0
N Rayzor	16	58	74	41
Stephens	21	26	47	15
Paloma Crk	13	22	35	16
**Pecan Crk	1	0	1	0
Rivera	0	68	68	35
Wilson	17	58	75	46
Total	133	517	650	413

** Speech Therapy Only



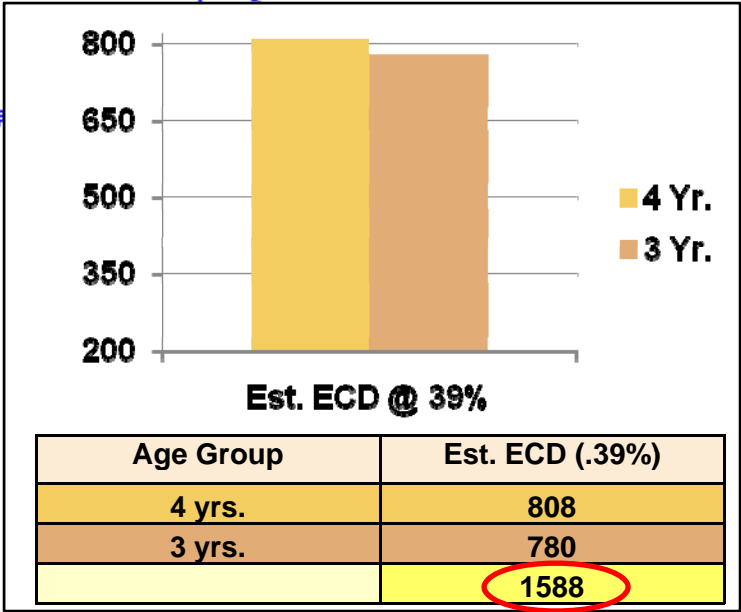
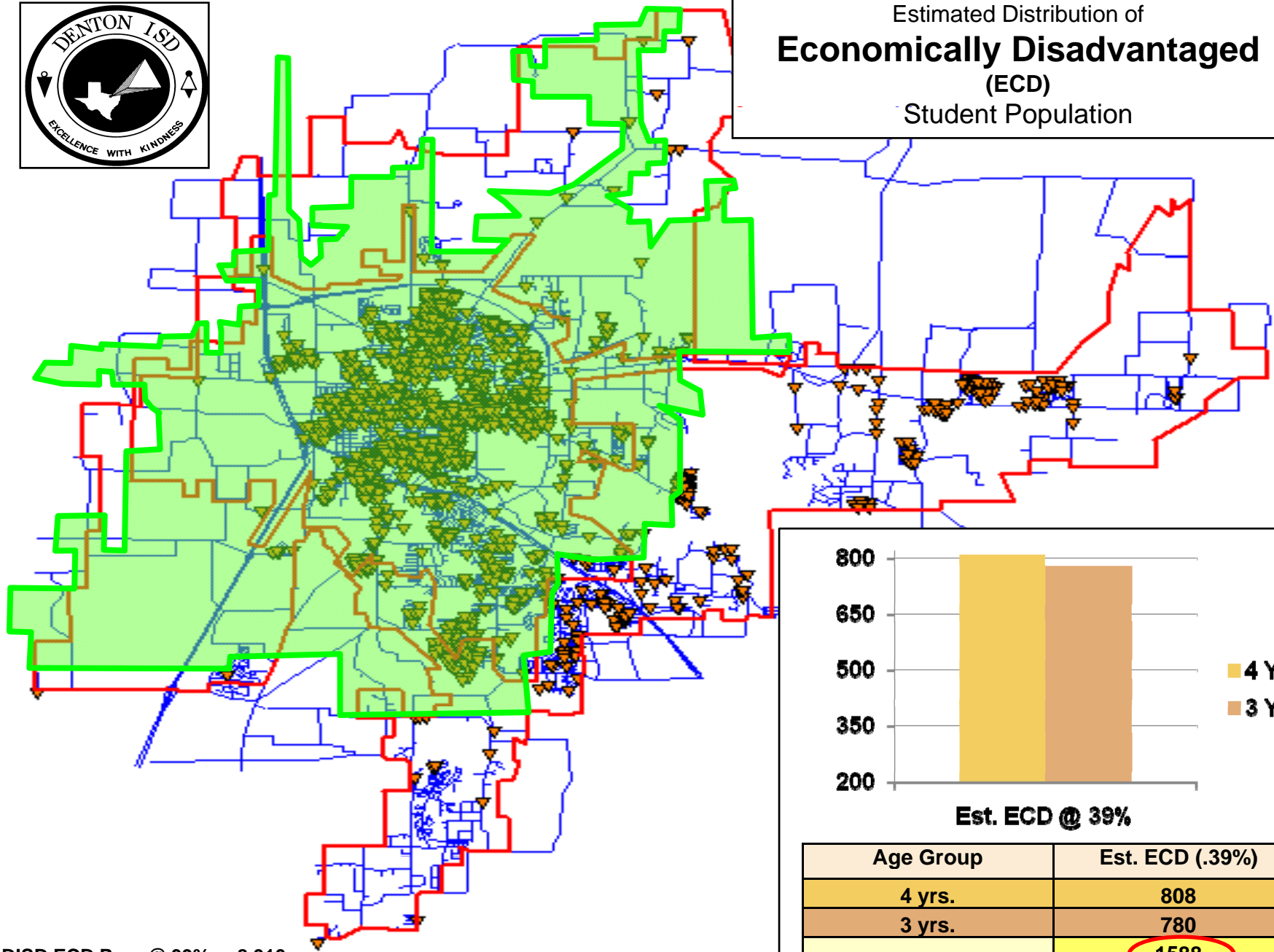
Distribution of estimated Early Childhood Ed. Students



Age Group	Est. ECE Pop.
4 yrs.	2,071
3 yrs.	2,000
	4,071



Estimated Distribution of
**Economically Disadvantaged
 (ECD)**
 Student Population

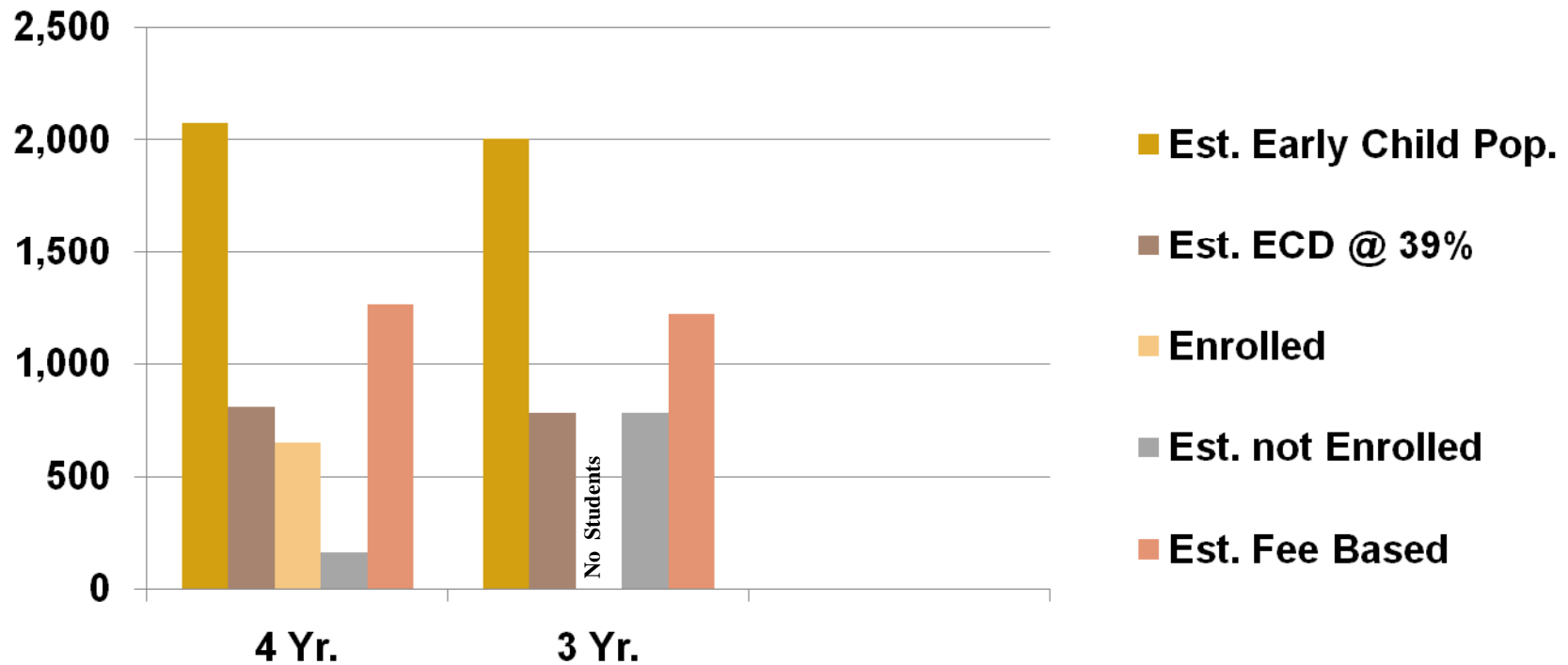


DISD ECD Pop. @ 39% = 8,910



Gonzalez School for Young Children

DISD Early Childhood Student Profile



Age Group	Est. ECE Pop.	Est. ECD (.39%)	* ECD Enrolled	Est. ECD Not Enrolled	Est. Fee Based Pop.
4 yrs.	2,071	808	650	158	1263
3 yrs.	2,000	780	0	780	1220
	4,071	1588	650	938	2483



Gonzalez School for Young Children

Student Programming Options

Pre-K Academy 3s & 4s (Tuition)

Full Day
•Classrooms – 5
•(1 session)

Staffing
•1 Teacher
•1 Aide

Qualifications
*Tuition

Services
•Extended School Day?

Transportation
•?

Pre-K Academy 3s & 4s (Tuition)

1/2 Day
•Classrooms – 7
•(2 sessions)

Staffing
•1 Teacher
•1 Aide

Qualifications
*Tuition

Services
•Extended School Day?

Transportation
•?

Pre-K 3s & 4s (Regular & ESL) (State Funded)

1/2 Day
•Classrooms – 5
•(2 sessions)

Staffing
•1 Teacher
•1 Aide

Qualifications
•Low Income
•Limited Eng Proficiency

Services
•Extended School Day?

Transportation
•?

Pre-K 3s & 4s (Bilingual) (State Funded)

1/2 Day
•Classrooms – 2
•(2 sessions)

Staffing
•1 Teacher
•1 Aide

Qualifications
•LEP

Services
•Extended School Day?

Transportation
•?

PPCD 3s & 4s (State Funded)

1/2 Day
•Classrooms – 5
•(2 sessions)

Staffing
•1 Teacher
•1 Aide

Qualifications
•ARD Referral

Services
•Extended School Day?

Transportation
•Yes, with ARD Referral



Gonzalez School for Young Children

Marketing Strategies

Attachment #4

1. Purpose:

To recruit pre-school students and their families to the Gonzalez School for Young Children.

2. Promotional Challenge:

Since the young children who will be attending the Pre-School programs, for only one year in most cases, the promotional & marketing programs must be ongoing from year to year.

3. Promotional Programs

- On-line communications
- Publicity via News Media
- Marketing to Parents
- Preschool Roundups
- Meetings/Open Houses/Tours
- Internal Communications
- Presentations to Civic & Community Groups



[Return](#)



Gonzalez School for Young Children

Preliminary Recommendations

1. Student Programming

- Pre-kindergarten Academy – 3 yr. & 4 yr – Full Day (Tuition)
- Pre-kindergarten Academy – 3 yr. & 4 yr. – Half Day (Tuition)
- Pre-kindergarten 3 yr. & 4 yr. – Regular & ESL - Half Day
- Pre-kindergarten 3 yr. & 4 yr. – Bilingual - Half Day
- PPCD 3 yr. & 4 yr. - Half Day

2. Marketing

- Implement Marketing Plans

3. Future Discussion Items:

- **Student Bus Transportation**
 - * Student Eligibility
 - * Scope of Services
 - * Asset & Equipment Requirements
 - * Funding Options
- **Student Tuition Fees**
- **Student Services**
 - * Extended School Day



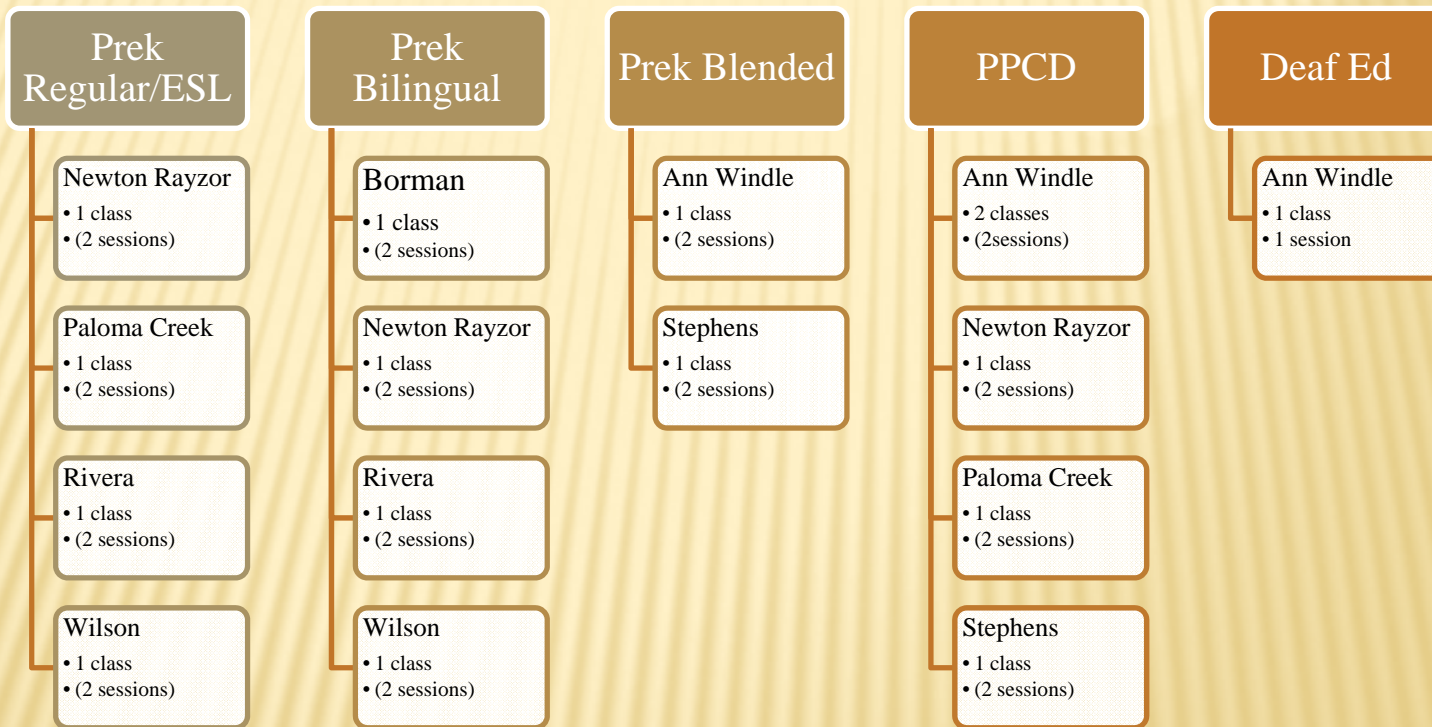


Ann Windle School for Young Children Programming 2009-10





District-wide Early Childhood Programming 2009-10





Gonzalez School for Young Children

Texas Education Code - Section 29.153

Free Pre-Kindergarten for Certain Children

- (a) A district may offer pre-kindergarten classes if the district identifies 15 or more children who are eligible under Subsection (b) and are at least four years of age. A district shall offer pre-kindergarten classes if the district identifies 15 or more eligible children who are at least three years of age. A district may not charge tuition for a kindergarten class offered under this section.
- (b) A child is eligible for enrollment in a pre-kindergarten class under this section if the child is at least three years of age and:
- (1) is unable to speak and comprehend the English language;
 - (2) is educationally disadvantaged;
 - (3) is a homeless child, as defined by U.S.C. Section 11434a, regardless of the residence of the child, of either parent of the child, or of the child's guardian or other person having lawful control of the child;
 - (4) the child of an active duty member of the armed forces of the United States, including the state military forces or a reserve component of the armed forces, who is ordered to active duty by proper authority;
 - (5) is the child of an active duty member of the armed forces of the United States, including the state military forces or a reserve component of the armed forces, who was injured or killed while serving on active duty; or
 - (6) is or ever has been in the conservator-ship of the department of Family and Protective Services following an adversary hearing held as provided by Section 262.201, Family Code