



Lead

learners • empathetic • accountable • dedicated

2025-2026 School Year

Aledo ISD Problem of Practice



After an analysis of district data, students are not consistently demonstrating essential academic and social behaviors and there is not consistent implementation of an engaging learner environment that is aligned to learner needs.

Aledo ISD Behavior Standards

Districtwide PreK-12
Approach



Bearcat Statement

Aledo Bearcats
Are...

- Learners
- Empathetic
- Accountable
- Dedicated



Aledo Behavior Standards

Core Components:

- Campus Behavior Guiding Coalition
- Behavior Matrix
- Behavior Flowchart
- Positive Recognition System

Campus-specific tailoring within the district framework.



Behavior Matrix

Expectations across key areas:

- Classrooms
- Hallways
- Restrooms
- Buses
- Etc.

Language tailored to student understanding

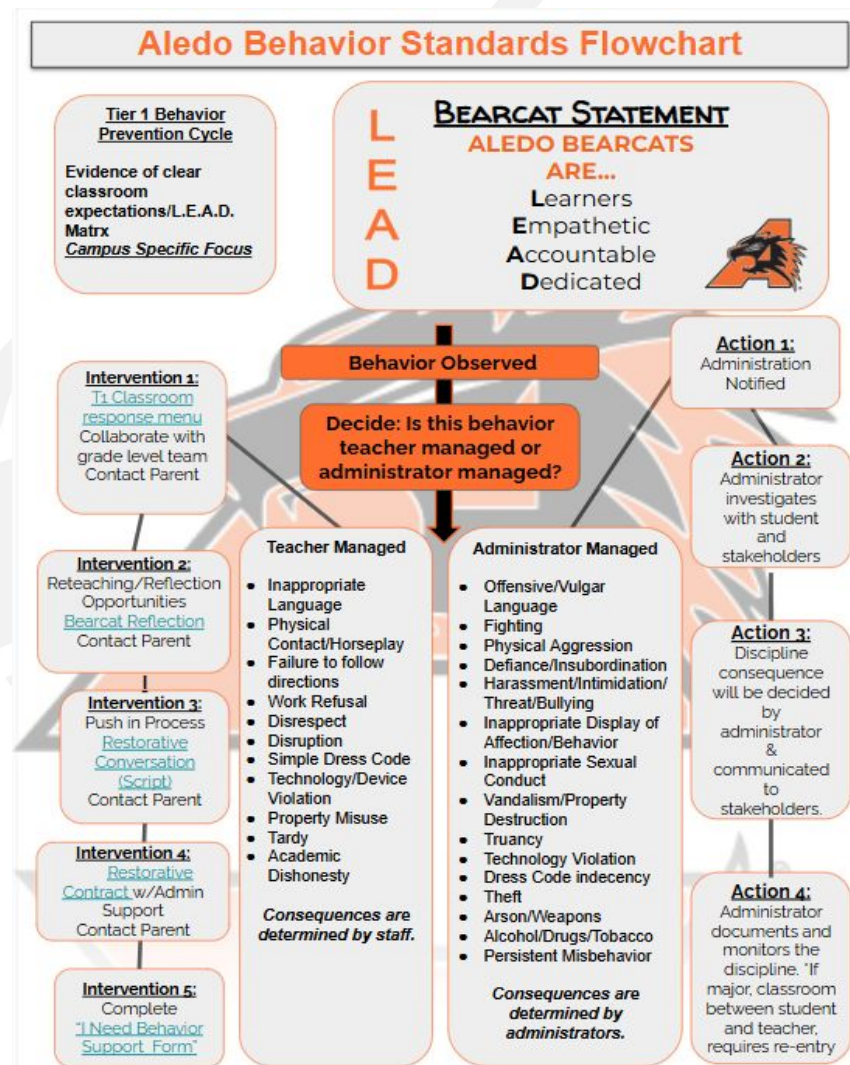
Clear alignment to L.E.A.D. values

Aledo ISD Matrix

Learners							
Empathetic							
Accountable							
Dedicated							

The Behavior Flowchart

- Step-by-step guide for behavior response.
- Differentiates teacher managed vs. administrator-managed behaviors.
- Built-interventions (re-teaching, restorative conversations).
- Clear process for requesting support when needed.



Positive Recognition System

- Reinforces positive behavior aligned to L.E.A.D. values
- Campus flexibility on recognition tools
 - Teacher
 - Grade level
 - School
- Tied to P2
- Promotes a positive culture





Lead

learners • empathetic • accountable • dedicated

