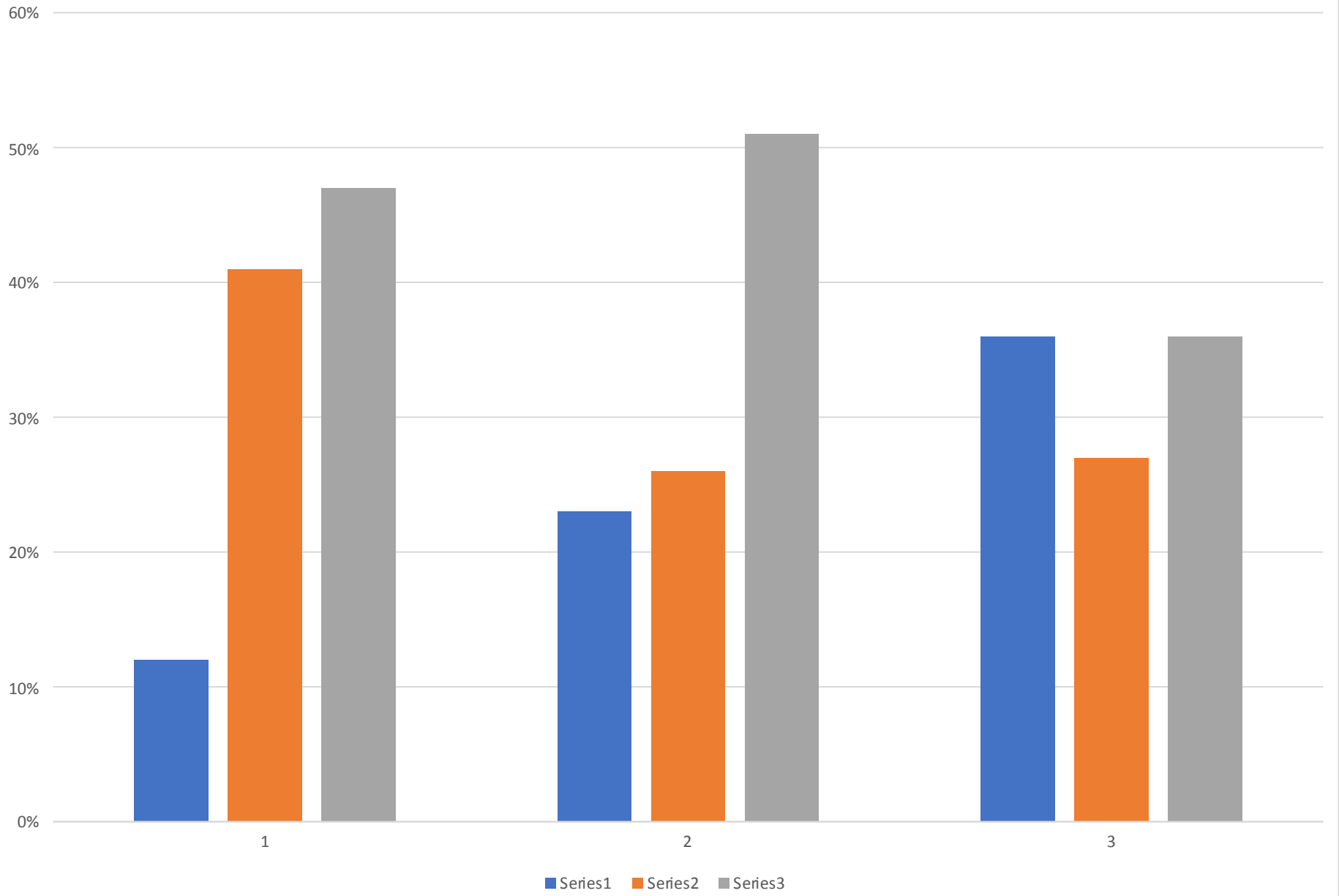


Chart Title



Elementary 2019-2020 ISIP Data K-6

Month:	Sept. ELA	Oct. ELA	Nov. ELA	Jan. ELA	Feb. ELA	Mar.	April
Kindergarten							
Tier 1	22%	31%	24%	35%	25%	44%	
Tier 2	39%	35%	46%	40%	39%	31%	
Tier 3	39%	34%	30%	25%	36%	25%	
Grade 1							
Tier 1	37%	41%	48%	53%	51%	57%	
Tier 2	26%	31%	37%	33%	40%	28%	
Tier 3	37%	28%	15%	14%	9%	15%	
Grade 2							
Tier 1	57%	64%	58%	60%	60%	61%	
Tier 2	27%	14%	14%	23%	17%	22%	
Tier 3	16%	22%	28%	17%	23%	16%	
Grade 3							
Tier 1	55%	65%	71%	72%	71%	77%	
Tier 2	31%	27%	21%	22%	20%	15%	
Tier 3	14%	8%	8%	7%	10%	9%	
Grade 4							
Tier 1	58%	48%	50%	64%	48%	27%	
Tier 2	22%	24%	21%	8%	19%	47%	
Tier 3	19%	28%	29%	28%	33%	27%	
Grade 5							
Tier 1	57%	46%	58%	62%	61%	59%	
Tier 2	18%	29%	21%	23%	20%	28%	
Tier 3	24%	24%	21%	15%	18%	13%	
Grade 6							
Tier 1	38%	35%	49%	50%	33%	41%	
Tier 2	33%	35%	33%	29%	48%	41%	
Tier 3	30%	30%	18%	21%	19%	17%	

Elementary Math ISIP Data

Sept. Math	Oct. Math	Nov. Math	Jan. Math	Feb. Math
43%	48%	44%	54%	56%
23%	20%	25%	24%	29%
34%	32%	31%	22%	15%
51%	65%	56%	61%	58%
30%	20%	27%	25%	28%
19%	15%	16%	14%	14%
66%	69%	77%	70%	69%
26%	18%	17%	26%	25%
8%	12%	6%	4%	6%
55%	71%	71%	72%	74%
37%	16%	17%	9%	19%
8%	13%	13%	20%	7%
28%	40%	59%	36%	35%
53%	36%	17%	32%	32%
19%	24%	24%	32%	32%
12%	23%	36%	47%	62%
41%	26%	27%	19%	19%
47%	51%	36%	34%	19%
54%	57%	69%	70%	61%
18%	19%	15%	17%	13%
28%	24%	15%	13%	26%

ta

Mar. April

48%
34%
18%

58%
30%
11%

63%
25%
13%

53%
26%
21%

31%
31%
38%

47%
33%
20%

42%
37%
21%

High School 2019-2020 Star Data

High School Math

Month:	Sept.	Oct.	Nov.	Jan.	Feb.	Mar.	Apr.	May	Sept.	Oct.	Nov.	Jan.	Feb.
Grade 7							6						
Tier 1	16%	14%	17%	18%	16%	12%	16%	0%	24%	39%	24%	56%	39%
Tier 2	35%	28%	29%	27%	19%	24%	0%	38%	33%	28%	33%	19%	31%
Tier 3	49%	58%	54%	55%	66%	64%	84%	63%	42%	33%	42%	26%	30%
Grade 8							6						
Tier 1	15%	7%	16%	9%	10%	13%	16%	25%	29%	30%	29%	30%	43%
Tier 2	24%	41%	27%	33%	28%	46%	84%	30%	32%	42%	32%	51%	30%
Tier 3	61%	52%	58%	58%	62%	41%	0%	45%	39%	28%	39%	19%	27%
Grade 9							7%						
Tier 1	17%	17%	18%	16%	15%	20%	43%	29%	25%	19%	27%	40%	26%
Tier 2	23%	17%	28%	34%	32%	31%	14%	25%	36%	28%	37%	36%	43%
Tier 3	57%	66%	54%	50%	56%	51%	43%	46%	39%	53%	36%	23%	31%
Grade 10							7%						
Tier 1	5%	5%	5%	11%	16%	15%	71%	38%	40%	32%	40%	48%	27%
Tier 2	23%	24%	23%	23%	20%	31%	29%	50%	30%	27%	30%	29%	52%
Tier 3	72%	70%	72%	66%	64%	54%	0%	13%	30%	41%	30%	22%	21%
Grade 11							9%						
Tier 1	13%	8%	14%	21%	18%	13%	22%	14%	38%	44%	45%	33%	55%
Tier 2	25%	38%	21%	28%	36%	25%	0%	43%	8%	22%	10%	42%	27%
Tier 3	63%	54%	64%	51%	45%	62%	78%	57%	54%	33%	45%	25%	18%
Grade 12							5%						
Tier 1	14%	18%	14%	15%	14%	21%	20%	33%	33%	67%	33%	0%	14%
Tier 2	29%	41%	29%	30%	36%	36%	80%	22%	50%	33%	50%	50%	29%
Tier 3	57%	41%	57%	60%	50%	43%	0%	44%	17%	0%	17%	50%	57%

Star Data

Mar.	Apr.	May
	6	
35%	16%	50%
38%	0%	17%
26%	84%	33%
	6	
47%	16%	32%
39%	84%	36%
13%	0%	32%
	7	
33%	43%	53%
27%	29%	18%
45%	29%	29%
	7	
43%	29%	31%
29%	29%	44%
28%	43%	25%
	4	
64%	25%	100%
18%	50%	0%
18%	25%	0%
	2	
50%	0%	34%
50%	100%	33%
0%	0%	33%

Star & ISIP Reading Data 2018-19/2019-20

	Fall 2018	Fall 2019	Wint2019	Wint2020	Spring 19	Spring 20
Tier 1	Kinder	Grade 1	Kinder	Grade 1	Kinder	Grade 1
	16%	37%	37%	53%	57%	
Tier 2	36%	26%	32%	33%	20%	
Tier 3	47%	37%	31%	14%	23%	
	Grade 1	Grade 2	Grade 1	Grade 2	Grade 1	Grade 2
Tier 1	28%	57%	53%	60%	74%	
Tier 2	31%	27%	28%	23%	17%	
Tier 3	41%	16%	19%	17%	9%	
	Grade 2	Grade 3	Grade 2	Grade 3	Grade 2	Grade 3
Tier 1	45%	55%	61%	72%	81%	
Tier 2	26%	31%	13%	22%	11%	
Tier 3	30%	14%	26%	7%	9%	
	Grade 3	Grade 4	Grade 3	Grade 4	Grade 3	Grade 4
Tier 1	45%	58%	66%	64%	68%	
Tier 2	37%	22%	21%	8%	20%	
Tier 3	18%	19%	13%	28%	12%	
	Grade 4	Grade 5	Grade 4	Grade 5	Grade 4	Grade 5
Tier 1	55%	57%	59%	62%	51%	
Tier 2	30%	18%	23%	23%	23%	
Tier 3	16%	24%	18%	15%	26%	
	Grade 5	Grade 6	Grade 5	Grade 6	Grade 5	Grade 6
Tier 1	35%	38%	35%	50%	41%	
Tier 2	26%	33%	35%	29%	31%	
Tier 3	38%	30%	29%	21%	28%	
	Grade 6	Grade 7	Grade 6	Grade 7	Grade 6	Grade 7
Tier 1	32%	16%	65%	18%	73%	
Tier 2	48%	35%	23%	27%	15%	
Tier 3	20%	49%	13%	55%	12%	
	Grade 7	Grade 8	Grade 7	Grade 8	Grade 7	Grade 8
Tier 1	17%	15%	13%	9%		
Tier 2	35%	24%	29%	33%		
Tier 3	48%	61%	58%	58%		
	Grade 8	Grade 9	Grade 8	Grade 9	Grade 8	Grade 9
Tier 1	15%	17%	13%	16%		
Tier 2	21%	23%	33%	34%		

Tier 3

64% 57%

54% 50%

Grade 9	Grade 10
5%	5%

Grade 9	Grade 10
0%	11%

Grade 9	Grade 10

Tier 1

5% 5%

0% 11%

Tier 2

23% 22%

8% 23%

Tier 3

71% 73%

92% 66%

Grade 10	Grade 11
11%	13%

Grade 10	Grade 11
18%	21%

Grade 10	Grade 11

Tier 1

11% 13%

18% 21%

Tier 2

18% 25%

23% 28%

Tier 3

71% 63%

59% 51%

Grade 11	Grade 12
14%	14%

Grade 11	Grade 12
21%	15%

Grade 11	Grade 12

Tier 1

14% 14%

21% 15%

Tier 2

18% 29%

26% 30%

Tier 3

68% 57%

53% 60%