




*Proposed  
Elementary 22  
Rezoning Plan*

# Denton ISD Staff

- 0 Robert Bostic, Assistant Superintendent
- 0 Vicki Sargent, Executive Director of Elementary Schools
- 0 Paul Andress, Executive Director of Operations
- 0 Sharon Cox, Director of Communications
- 0 Aaron Robins, Director of Transportation
- 0 Mario Zavala, Coordinator of Communications
- 0 Campus Administrators and Staff



As the meeting goes on tonight please write down your questions on the sheets of paper that you picked up as you entered the meeting. We will collect these at the end of the meeting and try to address every question.

# Agenda

- 0 The purpose of tonight's meeting
- 0 Two scheduled meetings for getting feedback
  - 0 December 3<sup>rd</sup> Crownover Middle, 1901 Creekside in Corinth at 7:00 p.m.
  - 0 December 5<sup>th</sup> Harpool Middle School, 9601 Stacey Lane in Lantana at 7:00 p.m.
- 0 The process of getting feedback
  - 0 Part 1 – New School Rezoning for Elementary School #22 (EP Rayzor, Blanton & McNair)
  - 0 Part 2- Realigning boundaries (Hawk & Pecan Creek)
- 0 Answering questions
- 0 The next scheduled board meeting
  - 0 Central Service Board Room, 1307 N. Locust, Denton, TX 76201
  - 0 ***January 21, 2014 at 6:00 p.m.***



# Current Elementary DISD Boundaries

Hawk

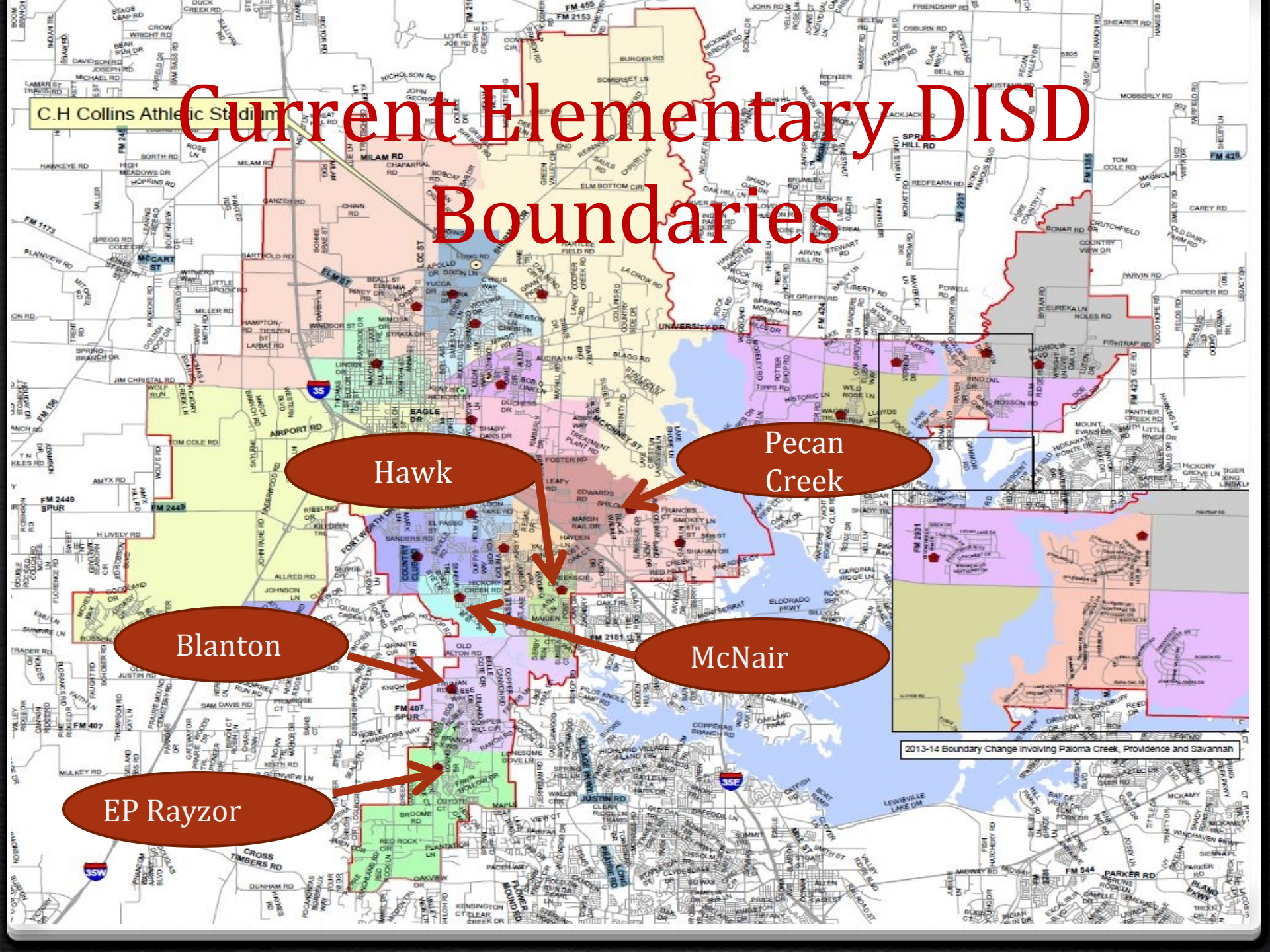
Pecan Creek

Blanton

McNair

EP Rayzor

2013-14 Boundary Change involving Paloma Creek, Providence and Savannah



# Current Enrollment on Each Campus

Student Overview Data as of 11/15/2013

<b>Enrollment Count</b>	01	02	03	04	05	EE	KG	PK	<b>Total</b>
Annie Webb-Blanton Elementary	124	118	128	129	140	3	131		<b>773</b>
EP Rayzor Elementary	110	119	100	141	128	2	81		<b>681</b>
McNair Elementary	75	87	86	102	84	1	73		<b>508</b>
Mildred Hawk Elementary	105	110	107	125	133	2	91		<b>673</b>
Pecan Creek Elementary	140	139	120	118	114	4	123		<b>758</b>

# Proposed Phase 1 Rezoning

- 0 Proposed Phase 1 rezoning includes impact to the following campuses' current student enrollment at:
- 0 EP Rayzor – 681 Current Enrollment
- 0 Blanton – 773 Current Enrollment
- 0 McNair-508 Current Enrollment
- 0 Elementary #22- 0 Current Enrollment



# Initial Community Support

- 0 Important to DISD and the community of Lantana to keep all Lantana residents in Lantana schools
- 0 The Lantana Education Foundation presented the DISD Board of Trustees with a check for one million dollars to help make a school site in Lantana a reality without a financial burden to DISD taxpayers



# Elementary #22

- 0 Was approved by DISD voters in the 2007 Bond
- 0 Will address the exponential growth rate in the southern section of the district.
- 0 The purpose is to:
  - 0 Relieve potential overcrowding and plan for new growth based on the developer and district's growth projections.
  - 0 Balance the number of students between the existing schools that surround the Lantana development and Elementary School #22.
  - 0 Allow space for children qualifying for special programs to be served in schools closer to their residence.
- 0 Potential rezoning took place in collaboration with:
  - 0 Campus Principals at EP Rayzor, Blanton and McNair for Elementary School #22.
  - 0 Hawk and Pecan Creek Principals on realigning Pecan Creek's boundaries.
  - 0 Central office personnel
  - 0 District demographers

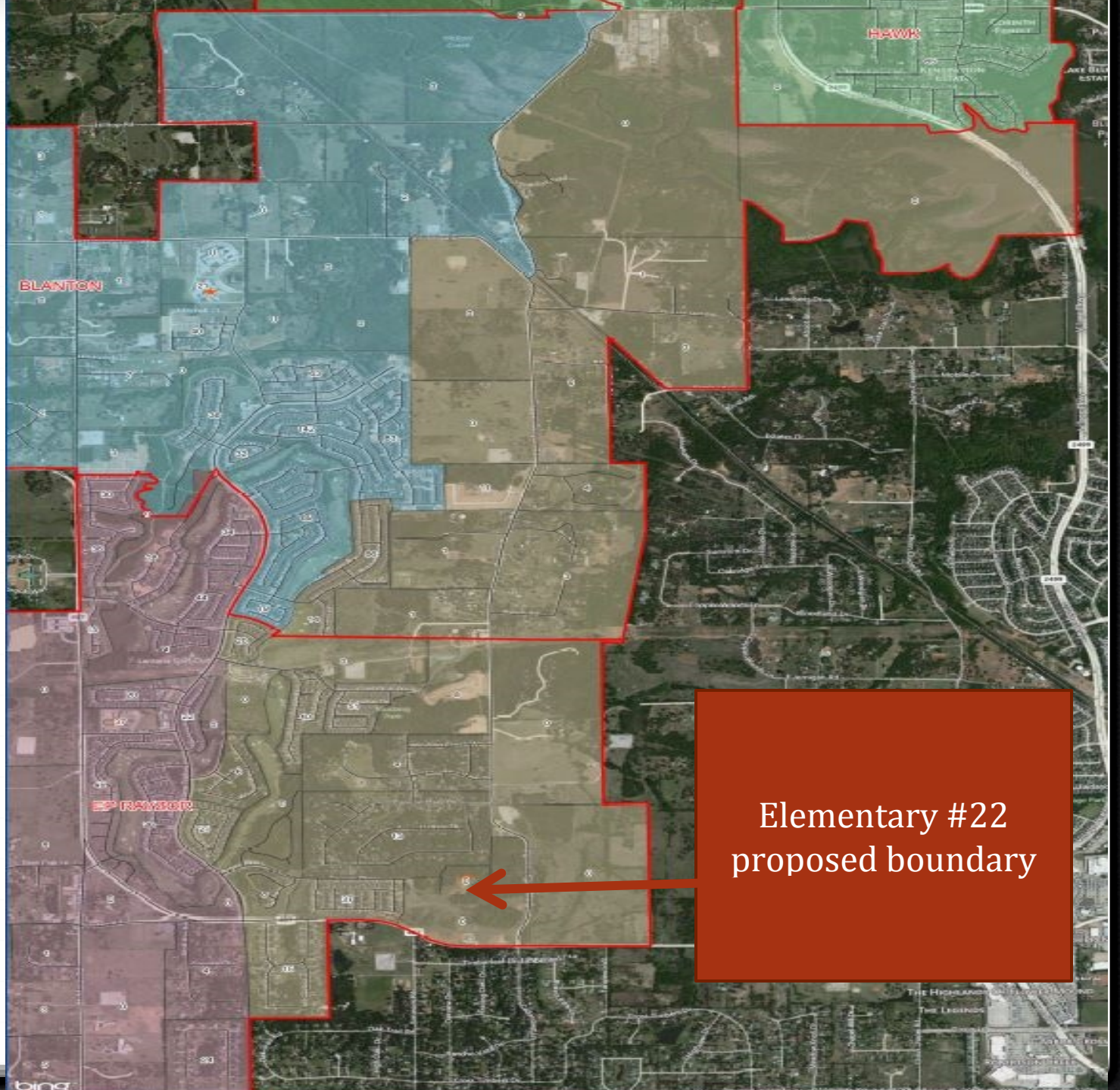
# Elementary #22

Located on the South  
West corner of Copper  
Canyon Rd and FM 407

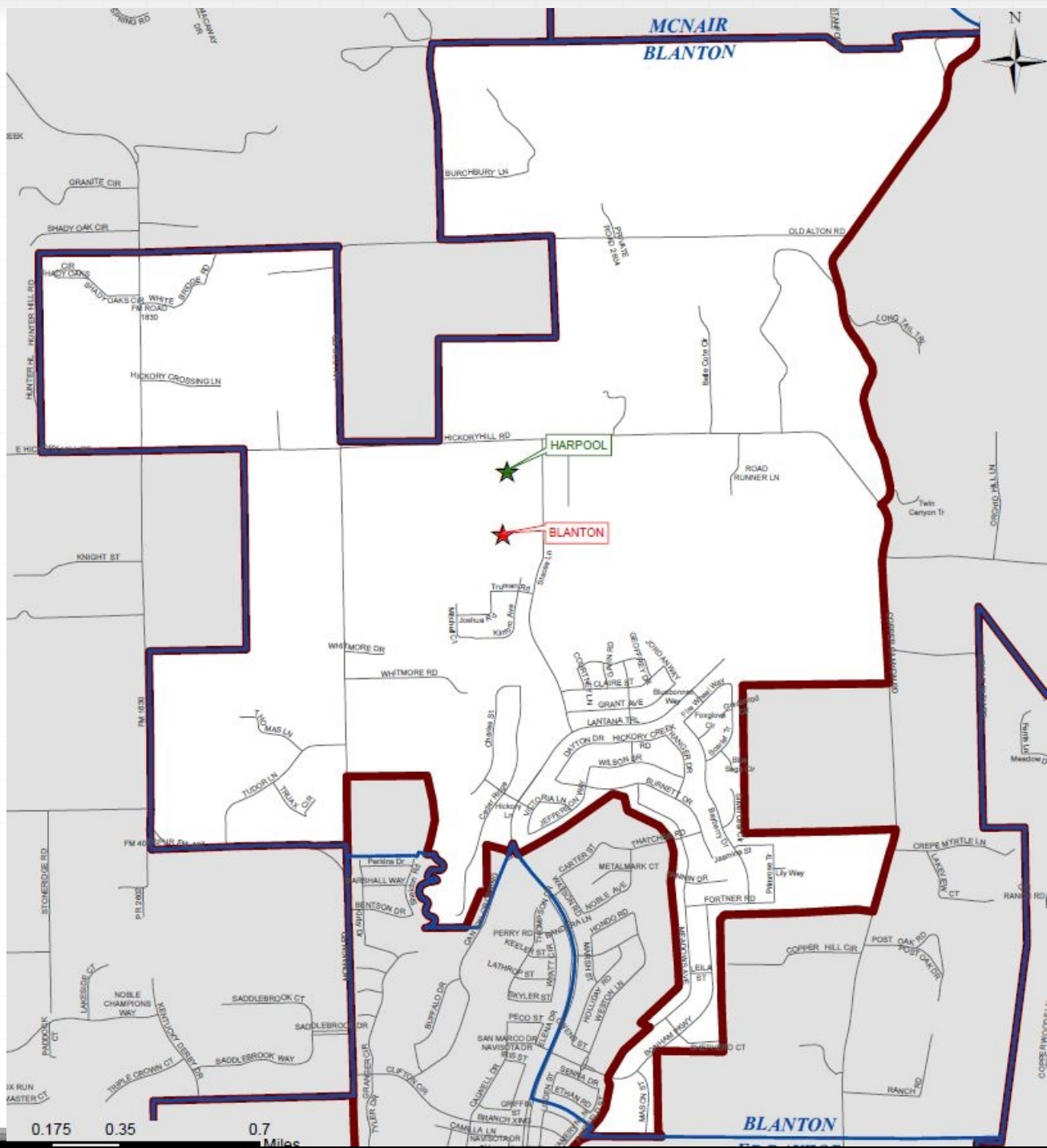




# Elementary #22 Attendance Zone



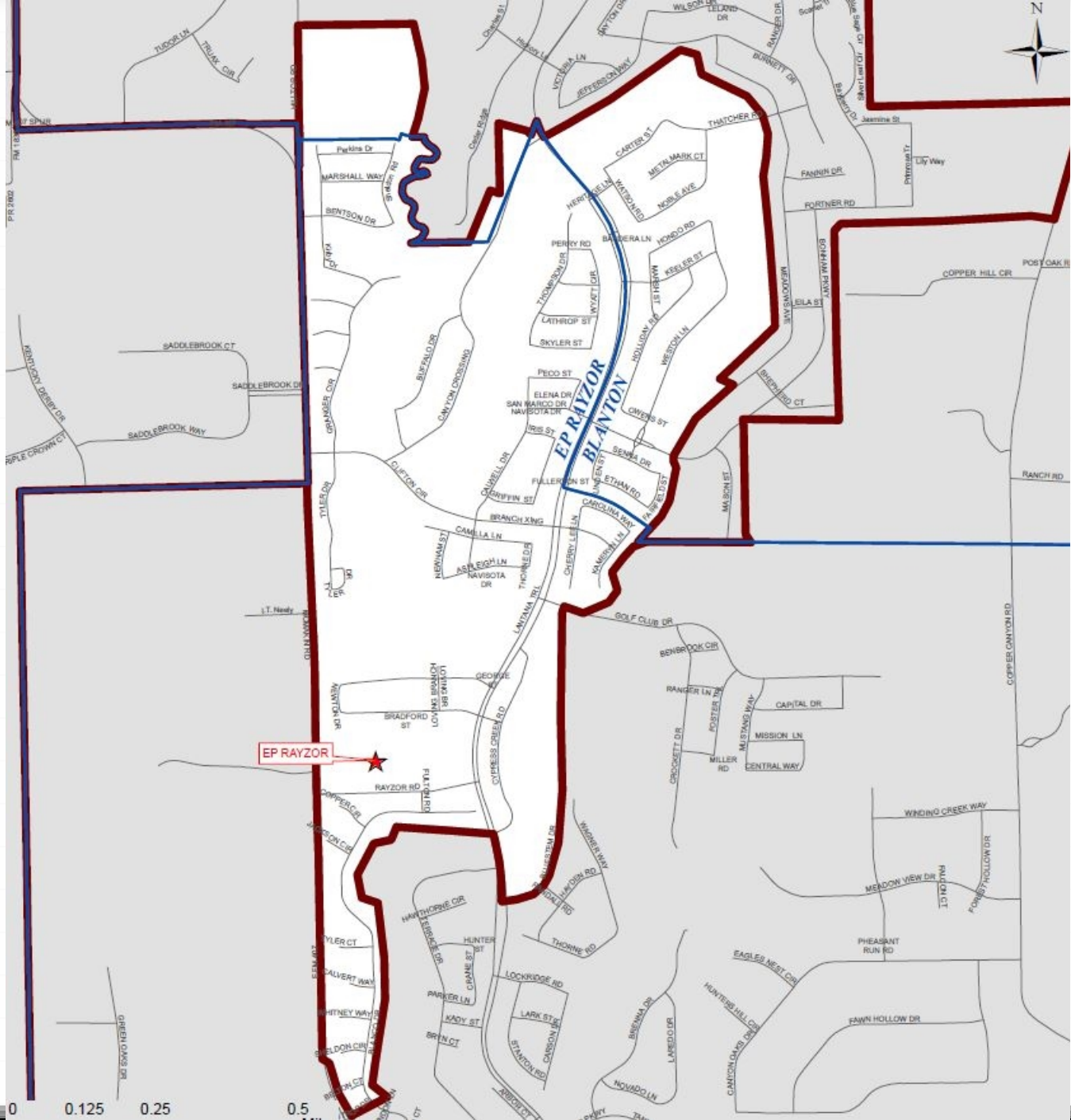
Elementary #22  
proposed boundary



0.175 0.35 0.7 Miles

© 2008 AerialView.com

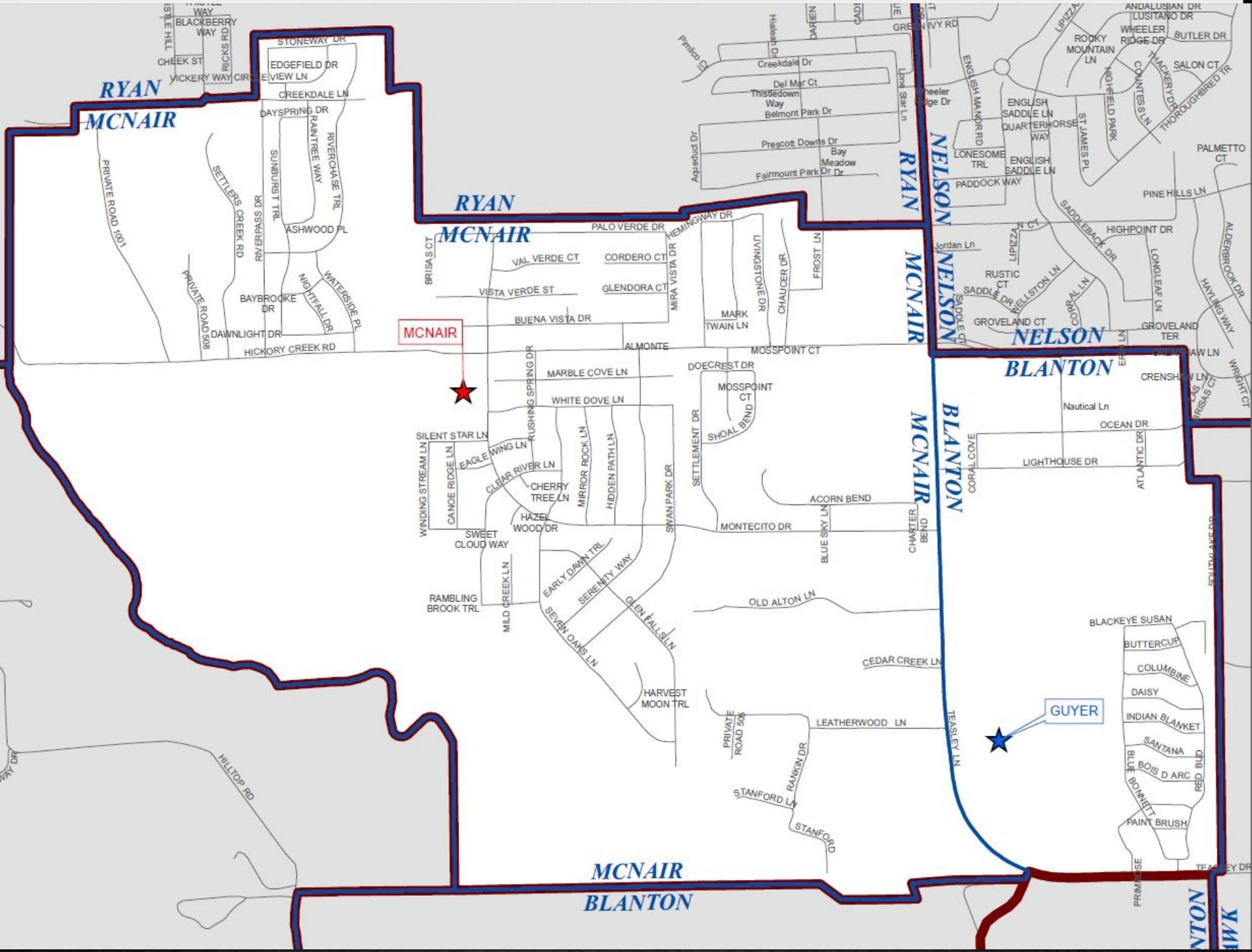




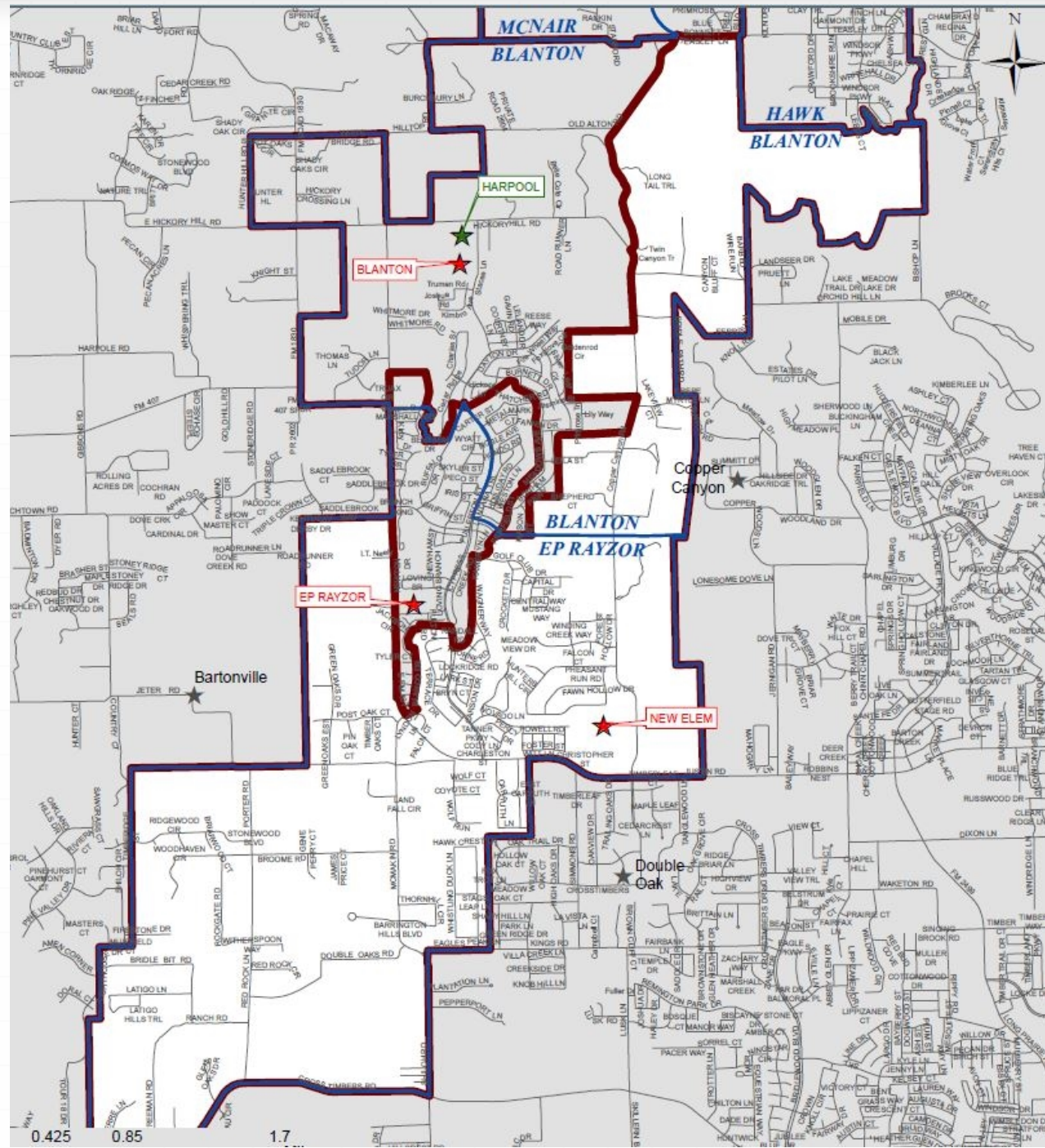
EPRAYZOR



0 0.125 0.25 0.5







0.425

0.85

1.7

# New Proposed Enrollment Totals

0 BLANTON 529

0 EP RAYZOR 464

0 MCNAIR 629

0 ES #22 344

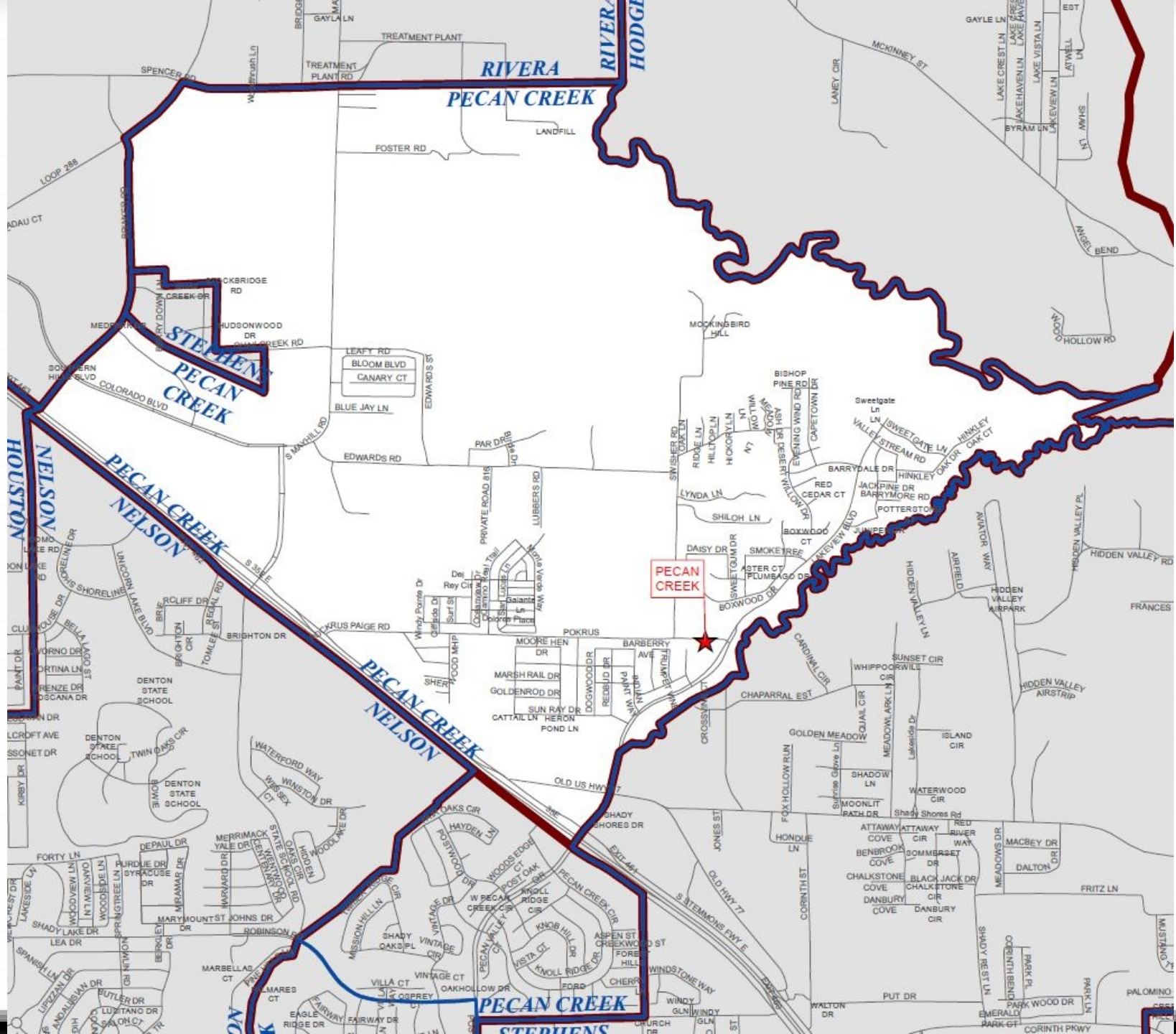


# Proposed Phase 2 Rezoning

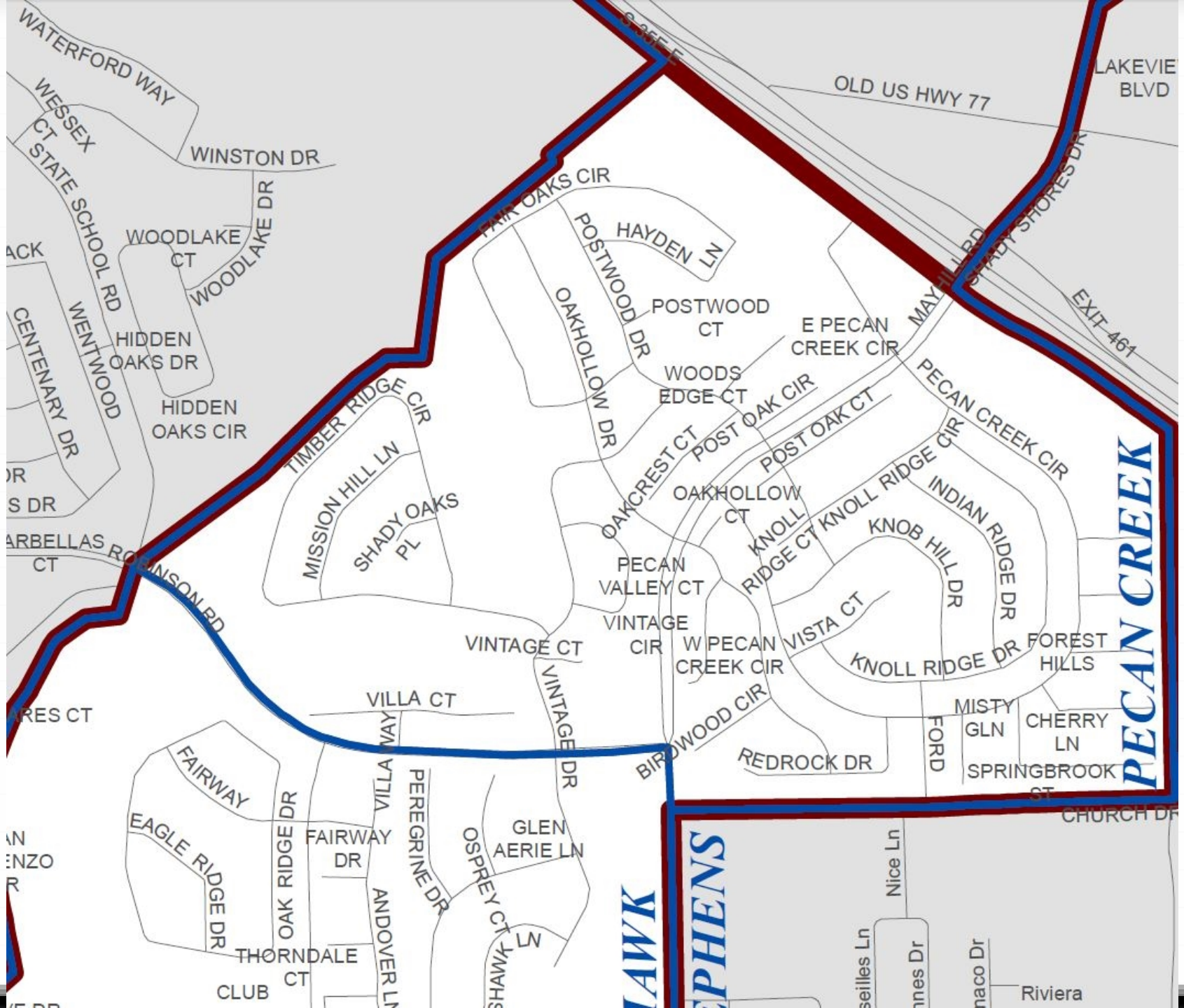
- 0 Proposed Phase 2 rezoning includes impact to the following campuses current student enrollment at:
- 0 Hawk Elementary- 673 Current Enrollment
- 0 Pecan Creek Elementary- 758 Current Enrollment

# Future Growth in Pecan Creek

- 0 When Pecan Creek was opened the attendance boundaries were adjusted to equalize the numbers of students that would attend Pecan Creek and Hawk.
- 0 Since Pecan Creek was opened the growth in the Preserves of Pecan Creek has grown and will have a steady growth trend in the years to come.
- 0 Hawk has a student population that has started to decline in recent years.
- 0 Students that attend Pecan Creek on the west side of I-35 must travel across Post Oak Road each day to attend school.
- 0 The newly proposed boundaries for Hawk and Pecan Creek have students on the west side of I-35/Post Oak Rd attend Hawk Elementary and students on the east side of I-35 and Lakeview Blvd. attend Pecan Creek.







LAKEVIE BLVD

OLD US HWY 77

EXIT-461

**PECAN CREEK**

**LAWK**

**EPHENS**

Riviera



# New Proposed Enrollment Totals

0 HAWK 793

0 PECAN CREEK 563

	Current Enrollment	2014-15	2015-16	2016-17	2017-18	2018-19
Blanton	769	529				
EP	682	464				
McNair	510	629				
ES 22	0	344				
Hawk	674	793				
Pecan Creek	760	563				
Total	3395	3322	0	0	0	0

# Frequently Asked Questions

- 0 My child is receiving special education services. Do I have to move my child?
- 0 My child is in 4<sup>th</sup> grade this year and will be a 5<sup>th</sup> grader next year. Does he or she have to move campuses?
- 0 Will there be transportation to the new school?
- 0 My child is in the dual language program at his current campus. Will he still have to move campuses?
- ✓ Special Education students are looked at on a case-by-case basis.
- ✓ 4<sup>th</sup> graders who will be 5<sup>th</sup> grade students in the fall may continue to attend their last school as long as the parent is willing to transport the student. Siblings of the 5<sup>th</sup> grader may request a transfer for one year only.
- ✓ Transportation will only be provided if your student lives outside of the two-mile radius.
- ✓ Dual language is only offered at a select number of campuses. Students will be considered on a case-by-case basis.

# Questions